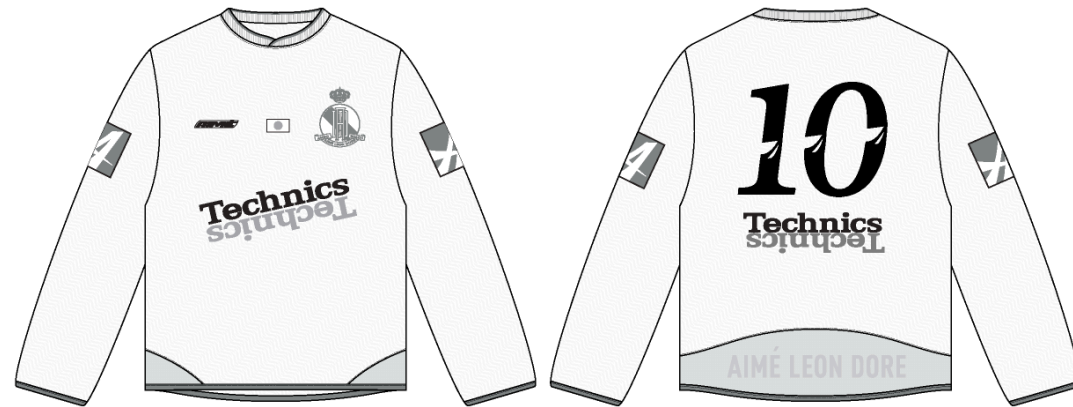


LS Technics Soccer Jersey

Name	LS Technics Soccer Jersey
Style No.	FW25CT018
Division	Mens
Category	Jerseys
Season	Fall/Winter
Year	2025
Size Scale	<div>M</div> -Sample size <div><div>XS</div><div>S</div><div>M</div><div>L</div><div>XL</div><div>XXL</div></div>
Style Status	Development
Factory	UN-AVAILABLE
Designer Name	Lonz
TD Name	Anastasiya
Created by/Author	11/15/2024 Jeni Fitzgerald jeni.fitzgerald@aimeleondore.com



1\_B&W-1

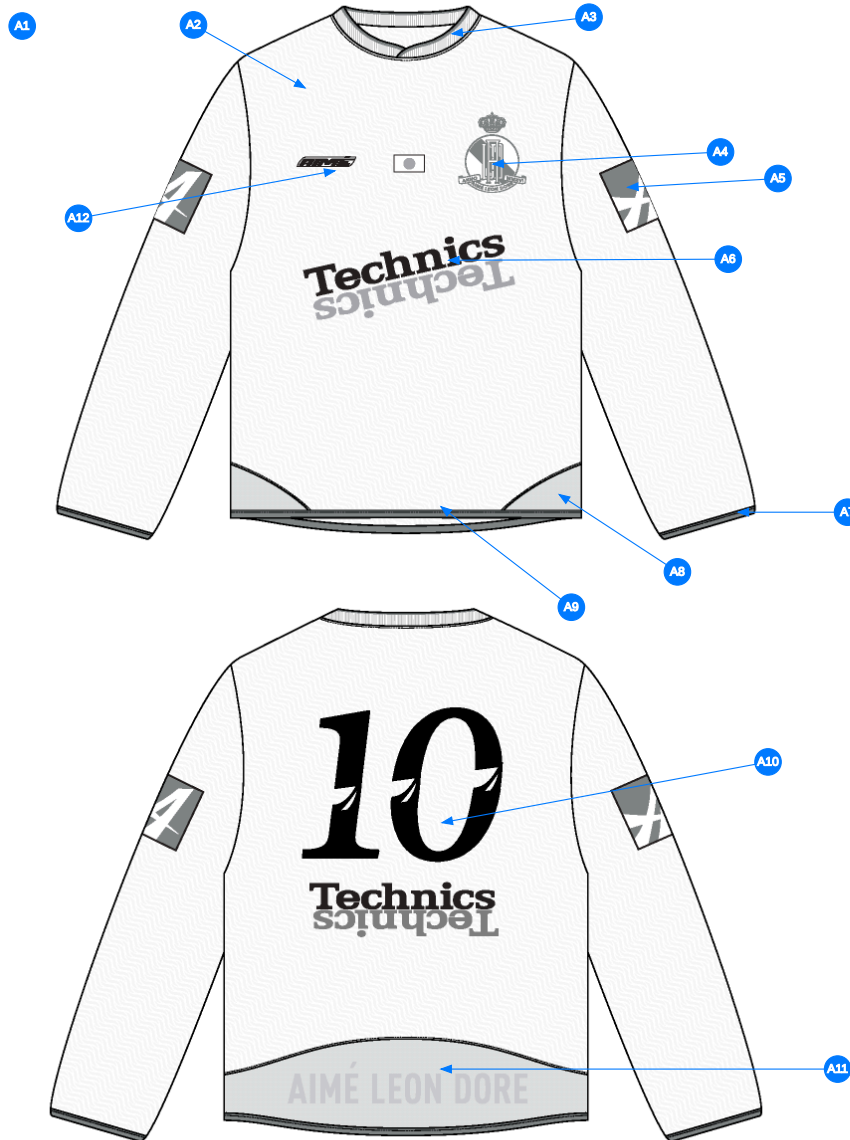


VIOLET INDIGO



BRIGHT WHITE

2\_CLR-1

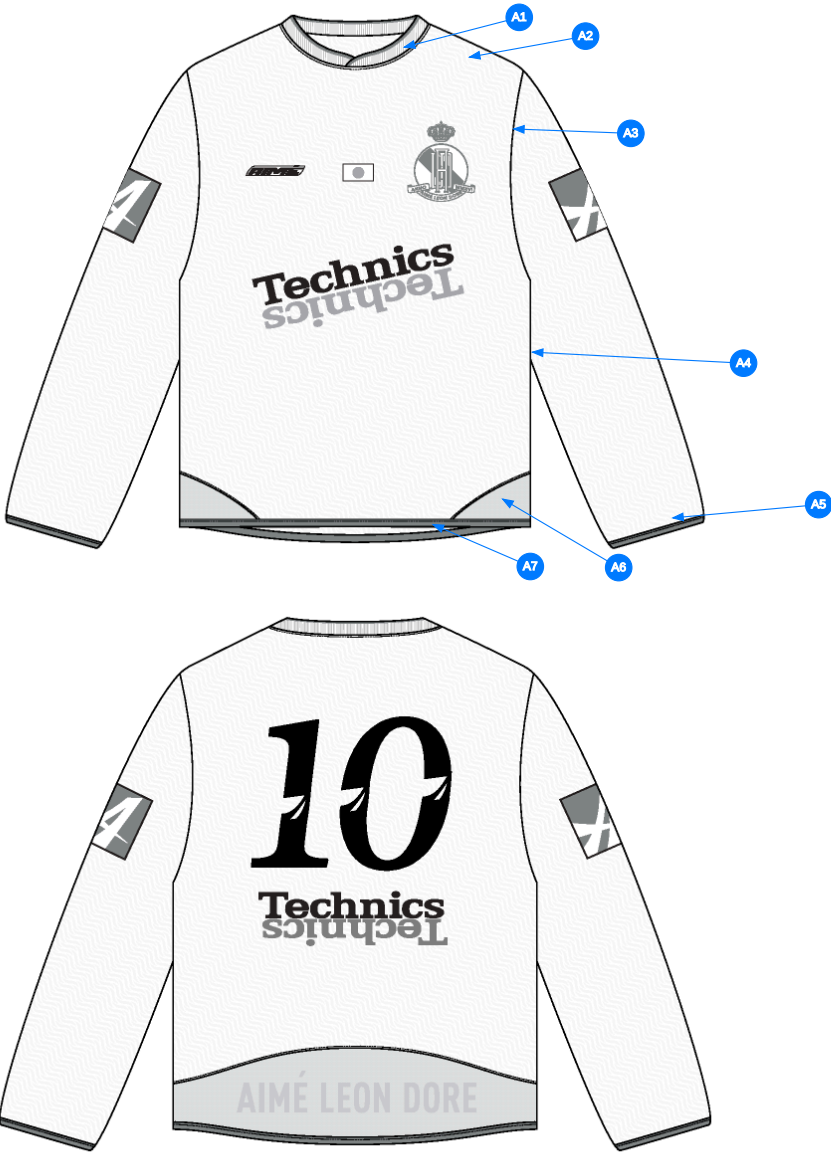


3\_Construction Details-1

Comments (12)

- A1** FIT: NB RC56 SOCCER JERSEY (NB25CT003)
- A2** JACQUARD ARTWORK @ BODY & SLEEVES - SEE SEPARATE FILE FOR DETAILS
- A3** 1X1 RIB DOUBLED W/ TIPPING @ NECK - SEE SEPARATE FILE FOR ARTWORK DETAILS - OVERLAP @ CF
- A4** ARTWORK @ WL CHEST
- A5** ARTWORK @ SLEEVES - SEE SEPARATE FILE FOR ARTWORK DETAILS
- A6** ARTWORK @ CF
- A7** ELASTIC BINDING @ SLEEVE OPENING
- A8** SET IN PANEL @ BOTTOM HEM - ONE PANEL MESH @ SIDE SEAM
- A9** POLY BINDING @ BOTTOM HEM
- A10** ARTWORK @ CB
- A11** SET IN PANEL @ BOTTOM HEM - SEE SEPARATE FILE FOR DETAILS
- A12** ARTWORK @ WR CHEST

1. fit: tham khảo NB25CT003
2. artwork tại thân và tay
3. rib 1x1 rib sọc tại cổ chồm tại giữa trước
4. artwork tại ngực trái
5. artwork tại tay
6. artwork tại giữa trước
7. thun viền tại lai tay
8. phối vải mesh tại đường may sườn
9. viền poly tại lai áo
10. artwork tại giữa thân sau
11. phối tại thân sau
12. artwork tại ngực phải



Comments (7)

- A1** 1/8" SN TS @ NECK
- A2** CLEAN SEAM @ SHOULDER SEAM
- A3** CLEAN SEAM FINISH @ ARMHOLE
- A4** CLEAN SEAM FINISH @ SIDE SEAM
- A5** EDGE STITCH @ BINDING
- A6** 1/8" SN TS @ SET IN PANELS
- A7** EDGE STITCH @ BINDING

- 1. điều 1 kim 1/8" tại cổ
- 2. may sạch tại đường may vai
- 3. may sạch tại nách
- 4. may sạch tại đường may sườn
- 5. mí điều tại viền tay
- 6. điều 1 kim 1/8" tại phối sườn
- 7. mí điều tại viền lai áo

4\_Stitching Details-1

RIB ARTWORK  
- ARTWORK IS NOT SHOWN TO SCALE BELOW



BRIGHT WHITE C/W



VIOLET INDIGO C/W



	PANTONE 19-3750 TCX Violet Indigo		PANTONE Bright White White		PANTONE BLACK C BLACK		PANTONE Bright White White
---	---	---	----------------------------------	---	-----------------------------	---	----------------------------------

EXECUTION REFERENCE



Rib Artwork (NECK)-1

cấu trúc tham khảo cổ

NECK CONSTRUCTION REFERENCE



Neck Construction Reference-1



Sample Size: M

POINT OF MEASURE	CODE	HOW TO MEASURE	CRITICAL	TYPE	TOLERANCE	M
Front Body Length	S&K001	HPS to bottom edge	true	Full	1/2 in	27 3/4 in
Back Body Length	S&K002	CB neck seam to bottom edge	true	Full	1/2 in	27 in
Shoulder Seam Forward	S&K007	HPS to seam	false	Full	1/8 in	1/2 in
Shoulder Slope	S&K008	Shoulder point perpendicular to HPS	false	Full	1/4 in	2 in
Front Neck Drop	S&K004	HPS to neck seam	false	Full	1/8 in	4 1/4 in
Back Neck Drop	WV005	FROM HPS LEVEL STRAIGHT DOWN TO CB NECK SEAM	true	Full	1/8 in	3/4 in
Back Neck Width	S&K006	Seam to seam at back neck, at HPS point	false	Full	1/4 in	7 1/2 in
Neck Trim Height	S&K254	Neck Seam to trim edge (before folded)	false	Full	1/8 in	7/8 in
Across Shoulder Width- Seam to seam	S&K259	Seam to Seam	false	Full	1/4 in	18 1/2 in
Across Front	S&K010	7" dwn from HPS, Seam to seam	false	Half	3/8 in	16 in
Across Back	S&K011	7" dwn from HPS, Seam to Seam	false	Half	3/8 in	16 1/2 in
Chest Width	S&K012	1" Below armhole- edge to edge	true	Half	1/2 in	22 1/4 in
Bottom Opening Width- At Edge	S&K013	At bottom edge	true	Half	1/2 in	22 1/4 in
Bottom Binding height	S&K014		false	Full	1/8 in	1/2 in
Sleeve Length from CB Neck	S&K032	3-point measure from CB Neck to shoulder point to sleeve edge	true	Full	1/2 in	34 1/4 in
Armhole Drop	S&K016	Below HPS - measure perpendicular	false	Full	1/4 in	11 1/2 in
Bicep Width	S&K017	1" below armhole- edge to edge	false	Half	1/4 in	8 3/4 in
Forearm Width	S&K345	9" up from sleeve cuff edge	false	Half	1/4 in	6 3/4 in
Sleeve Opening Width 1" Above Cuff Seam	S&K		true	Half	1/4 in	5 1/4 in
Sleeve Opening Width- At Edge	S&K073	At edge	false	Half	1/4 in	4 1/4 in
Sleeve Binding Height	S&K036		false	Full	1/8 in	1/2 in
WL Artwork Placement from HPS to Top Edge	S&K103		true	Full	1/8 in	7 1/4 in
WL Artwork Placement Out from Edge of Laser Artwork	S&K252		false	Full	1/8 in	2 1/4 in
WR Chest Artwork Centered on WL Artwork	ofDSVx		true	Full	1/8 in	0 in
WR Chest Artwork Placement Out from CF Line	S&K252		false	Full	1/8 in	2 1/4 in
WL Sleeve Artwork Placement from Shoulder Seam	Zm7wU2		true	Full	1/8 in	4 1/4 in
WR Sleeve Artwork Placement from Shoulder Seam	mig0Rb		true	Full	1/8 in	4 1/4 in
WL/WR Sleeve Artwork Centered on Sleeve Fold	kwwcMv		true	Full	1/8 in	0 in
CB Artwork Placement Below CB Neck Seam	S&K109		false	Full	1/8 in	4 1/2 in
Back Artwork Centered on Bottom Back Panel	SfSXbi		true	Full	1/8 in	0 in
Back Panel Height	YPHk0O		true	Full	1/8 in	5 in
Front Panel Height At Side Seam	dDNSBS		true	Full	1/8 in	3 in









Development Notes - Anastasiya Zolotova

CREATED ON NOV 14, 2024 5:07 PM

FW25CT018 LS Technics Soccer Jersey  
Date: 11/14/24  
Status: Requesting 1s Proto  
TD: Anastasiya

Fit: Follow measurement page, construction page, and design sketch to make 1st proto.

fit: tham khảo trang thông số, trang cấu trúc và sketch để làm mẫu proto

COMPONENT		QTY	1.  PROTO
FABRIC			
1	<b>UA Jacquard Satin</b> CODE: Y1026 Placement: BODY, SLEEVES Notes: FOLLOW ARTWORK FILE FOR JACQUARD PATTERN Supplier: UNAVAILABLE Country of Origin: VIETNAM		-  Bright White Custom Code: 11-0601 TCX Price: 0.00
2	<b>FLRIB-0001</b> CODE: FLRIB-0001 Placement: NECK TRIM Notes: FOLLOW ARTWORK FILE FOR TIPPING Supplier: UNAVAILABLE Country of Origin: VIETNAM		-  Bright White/Violet Indigo Price: 0.00
3	<b>UA SY23227 Mesh</b> CODE: SY23227 Placement: BOTTOM HEM PANEL Notes: FOLLOW ARTWORK FILE FOR JACQUARD PATTERN Supplier: UNAVAILABLE Weight: 140 gsm Country of Origin: VIETNAM		-  Bright White Custom Code: 11-0601 TCX Price: 0.00
4	<b>UA ELASTIC</b> CODE: S24-ELASTIC Placement: SLEEVE OPENING Notes: ELASTIC BINDING Supplier: UNAVAILABLE		-  Violet Indigo Custom Code: 19-3750 TCX Price: 0.00
5	<b>IN DEV</b> CODE: TBD Placement: BOTTOM HEM Notes: POLY BINDING; COLOR = VIOLET INDIGO		- IN DEV Price: 0.00
6	<b>ARTWORK</b> CODE: AS CORRESPONDING FILE Placement: WL CHEST Notes: FOLLOW ARTWORK AND POM Supplier: Factory Sourced		- ARTWORK Price: 0.00
7	<b>ARTWORK</b> CODE: AS CORRESPONDING FILE Placement: SLEEVES Notes: FOLLOW ARTWORK FILE AND POM Supplier: Factory Sourced		- ARTWORK Price: 0.00
8	<b>ARTWORK</b> CODE: AS CORRESPONDING FILE Placement: CF Notes: FOLLOW ARTWORK AND POM Supplier: Factory Sourced		- ARTWORK Price: 0.00
9	<b>ARTWORK</b> CODE: AS CORRESPONDING FILE Placement: CB Notes: FOLLOW ARTWORK AND POM Supplier: Factory Sourced		- ARTWORK Price: 0.00
10	<b>ARTWORK</b> CODE: AS CORRESPONDING FILE Placement: WR CHEST Notes: FOLLOW ARTWORK AND POM Supplier: Factory Sourced		- ARTWORK Price: 0.00
LABEL AND TRIM PACKAGE			
11	<b>IN DEV</b> CODE: TBD Placement: INTERIOR Notes: UNION LABEL, ART. # TBD		- IN DEV Price: 0.00
12	<b>ALD Woven Loop Label</b> CODE: ALD-ML02 Placement: WL SIDE SEAM Notes: FOLLOW POM Supplier: Colonial	1	-  Parmesan Base / Gold Text Price: 0.00

COMPONENT		QTY	1.  PROTO
13	<b>ALD Woven Main Label W/ Size</b> CODE: ALD-ML03 Placement: CB NECK INTERIOR Notes: FOLLOW POM Supplier: Colonial Country of Origin: CHINA	1 Piece	- ALD Woven Main Label W/ Size  Price: 0.079
Components 13			Total 0.079

<b>Measured Size: M FW25CT018</b>								
POINT OF MEASURE		CODE	HOW TO MEASURE		CRITICAL	TYPE	TOLERANCE	EXPECTED
Front Body Length	DÀI ÁO THÂN TRƯỚC	S&K001	HPS to bottom edge	DÀI ÁO THÂN TRƯỚC TỪ ĐỈNH VAI ĐẾN MÉP LAI	true	Full	1/2 in	27 3/4 in
Back Body Length	DÀI ÁO THÂN SAU	S&K002	CB neck seam to bottom edge	DÀI ÁO THÂN SAU GIỮA CỔ SAU ĐẾN MÉP LAI	true	Full	1/2 in	27 in
Shoulder Seam Forward	CHỖM VAI	S&K007	HPS to seam	CHỖM VAI ĐỈNH VAI ĐẾN ĐƯỜNG MAY	false	Full	1/8 in	1/2 in
Shoulder Slope	XUÔI VAI	S&K008	Shoulder point perpendicular to HPS	XUÔI VAI ĐO TỪ NGANG VAI ĐẾN ĐIỂM NGANG ĐỈNH VAI	false	Full	1/4 in	2 in
Front Neck Drop	HẠ CỔ TRƯỚC	S&K004	HPS to neck seam	HẠ CỔ TRƯỚC TỪ ĐỈNH VAI ĐẾN ĐƯỜNG MAY CỔ	false	Full	1/8 in	4 1/4 in
Back Neck Drop	HẠ CỔ SAU	WV005	FROM HPS LEVEL STRAIGHT DOWN TO CB NECK SEAM	HẠ CỔ SAU TỪ ĐỈNH VAI ĐẾN ĐƯỜNG MAY CỔ	true	Full	1/8 in	3/4 in
Back Neck Width	NGANG CỔ SAU	S&K006	Seam to seam at back neck, at HPS point	TỪ ĐƯỜNG MAY TỚI ĐƯỜNG MAY, ĐO TẠI ĐỈNH VAI.	false	Full	1/4 in	7 1/2 in
Neck Trim Height	TO BÀN BO CỔ	S&K254	Neck Seam to trim edge (before folded)	TO BÀN CỔ TỪ ĐƯỜNG TRÁI CỔ ĐẾN MÉP BỎ (TRƯỚC GẤP)	false	Full	1/8 in	7/8 in
Across Shoulder Width- Seam to seam	NGANG VAI - ĐƯỜNG MAY ĐẾN ĐƯỜNG MAY	S&K259	Seam to Seam	NGANG VAI TỪ ĐƯỜNG MAY ĐẾN ĐƯỜNG MAY	false	Full	1/4 in	18 1/2 in
Across Front	NGANG NGỰC	S&K010	7" dwn from HPS, Seam to seam	NGANG TRƯỚC : ĐO TỪ HẠ 7" TỪ CAO VAI, ĐO TỪ ĐƯỜNG MAY ĐẾN ĐƯỜNG MAY	false	Half	3/8 in	16 in
Across Back	NGANG LƯNG	S&K011	7" dwn from HPS, Seam to Seam	NGANG SAU ĐO TỪ HẠ 7" TỪ CAO VAI, ĐO TỪ ĐƯỜNG MAY ĐẾN ĐƯỜNG MAY	false	Half	3/8 in	16 1/2 in
Chest Width	RỘNG NGỰC	S&K012	1" Below armhole- edge to edge	RỘNG NGỰC ĐO TỪ: HẠ 1" DƯỚI NGẪ TỰ NÁCH, ĐO TỪ MÉP ĐẾN MÉP	true	Half	1/2 in	22 1/4 in
Bottom Opening Width- At Edge	NGANG LAI ÁO - TẠI MÉP	S&K013	At bottom edge	NGANG LAI TẠI MÉP LAI	true	Half	1/2 in	22 1/4 in
Bottom Binding height	TO BÀN LAI ÁO	S&K014		TO BÀN LAI TỪ MÉP ĐẾN ĐƯỜNG ĐIỀU	false	Full	1/8 in	1/2 in
Sleeve Length from CB Neck	DÀI TAY TỪ GIỮA CỔ SAU	S&K032	3-point measure from CB Neck to shoulder point to sleeve edge	3 ĐIỂM: TỪ GIỮA CỔ SAU ĐẾN VAI VÀ MÉP TAY	true	Full	1/2 in	34 1/4 in
Armhole Drop	HẠ NÁCH	S&K016	Below HPS - measure perpendicular	HẠ NÁCH: HẠ TỪ ĐỈNH VAI ĐẾN ĐIỂM NGANG NGẪ TỰ NÁCH	false	Full	1/4 in	11 1/2 in
Bicep Width	NGANG BẮP TAY	S&K017	1" below armhole- edge to edge	BẮP TAY :HẠ 1" DƯỚI NGẪ TỰ NÁCH, ĐO TỪ MÉP ĐẾN MÉP	false	Half	1/4 in	8 3/4 in
Forearm Width	RỘNG CẰNG TAY	S&K345	9" up from sleeve cuff edge	NGANG TAY ĐO 9" TỪ LAI TAY	false	Half	1/4 in	6 3/4 in

Sleeve Opening Width 1" Above Cuff Seam	RỘNG CỬA TAY TRÊN ĐƯỜNG MAY 1"	S&K			true	Half	1/4 in	5 1/4 in
Sleeve Opening Width- At Edge	RỘNG CỬA TAY TẠI MÉP	S&K073	At edge	TẠI MÉP	false	Half	1/4 in	4 1/4 in
Sleeve Binding Height	CAO VIỀN LAI TAY	S&K036			false	Full	1/8 in	1/2 in
WL Artwork Placement from HPS to Top Edge	VỊ TRÍ ARTWORK NGỰC TRÁI TỪ ĐỈNH VAI ĐẾN MÉP	S&K103			true	Full	1/8 in	7 1/4 in
WL Artwork Placement Out from Edge of Laser Artwork	VỊ TRÍ ARTWORK NGỰC TRÁI TỪ GIỮA TRƯỚC	S&K252			false	Full	1/8 in	2 1/4 in
WR Chest Artwork Centered on WL Artwork	VỊ TRÍ ARTWORK NGỰC PHẢI TRÊN GIỮA ARTWORK NGỰC TRÁI	ofDSVx			true	Full	1/8 in	0 in
WR Chest Artwork Placement Out from CF Line	VỊ TRÍ ARTWORK NGỰC PHẢI TỪ GIỮA TRƯỚC	S&K252			false	Full	1/8 in	2 1/4 in
WL Sleeve Artwork Placement from Shoulder Seam	VỊ TRÍ ARTWORK TAY TRÁI TỪ VAI	Zm7wU2			true	Full	1/8 in	4 1/4 in
WR Sleeve Artwork Placement from Shoulder Seam	VỊ TRÍ ARTWORK TAY PHẢI TỪ VAI	mig0Rb			true	Full	1/8 in	4 1/4 in
WL/WR Sleeve Artwork Centered on Sleeve Fold	VỊ TRÍ ARTWORK TAY TRÁI/TAY PHẢI TRÊN GIỮA	kwwcMv			true	Full	1/8 in	0 in
CB Artwork Placement Below CB Neck Seam	VỊ TRÍ ARTWORK THÂN SAU DƯỚI ĐƯỜNG MAY CỔ SAU	S&K109			false	Full	1/8 in	4 1/2 in
Back Artwork Centered on Bottom Back Panel	VỊ TRÍ ARTWORK THÂN SAU TRÊN GIỮA PHỐI THÂN SAU	SfSXbi			true	Full	1/8 in	0 in
Back Panel Height	CAO PHỐI SAU	YPHk0O			true	Full	1/8 in	5 in
Front Panel Height At Side Seam	CAO PHỐI TRƯỚC TẠI ĐƯỜNG MAY SƯỜN	dDNSBS			true	Full	1/8 in	3 in