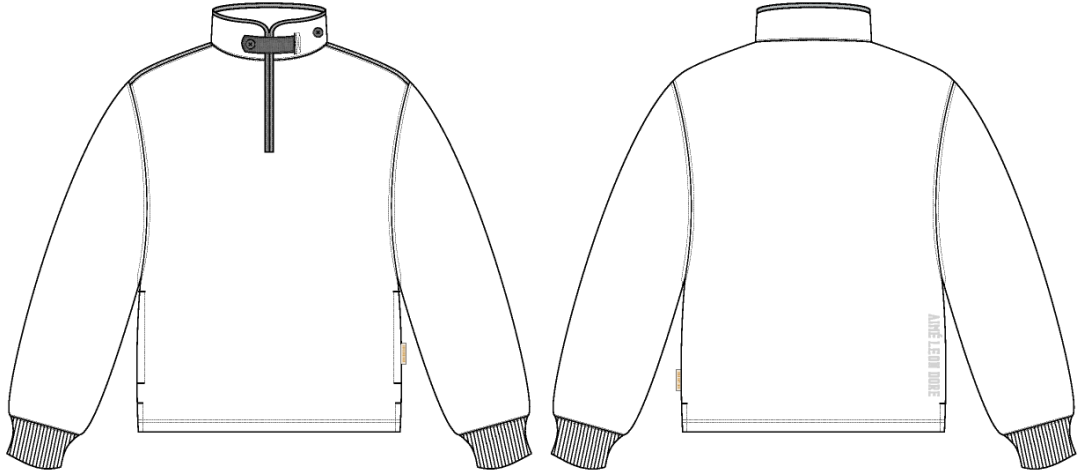


Collegiate Quarter Zip

Name	Collegiate Quarter Zip
Style No.	FW25CS004
Division	Mens
Category	Sweatshirts
Season	Fall/Winter
Year	2025
Size Scale	<div>M</div> -Sample size <div><div>XS</div><div>S</div><div>M</div><div>L</div><div>XL</div><div>XXL</div></div>
Style Status	Adopted
Factory	UN-AVAILABLE
Designer Name	Wes
TD Name	Anastasiya
Created by/Author	6/26/2025 Anastasiya Zolotova anastasiya.zolotova@aimeleondore.com



1_B&W-1



NAVAL ACADEMY

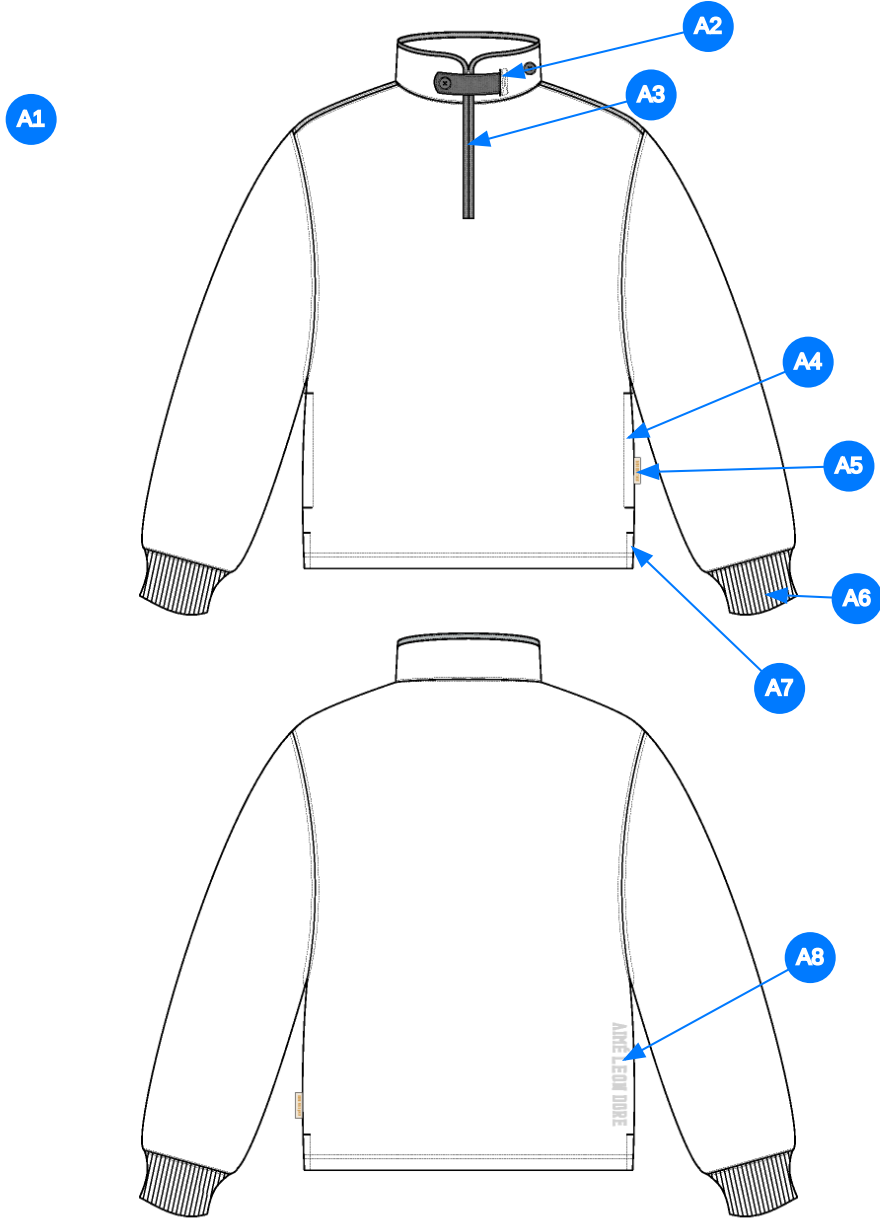


CHOCOLATE TRUFFLE



JUNGLE GREEN

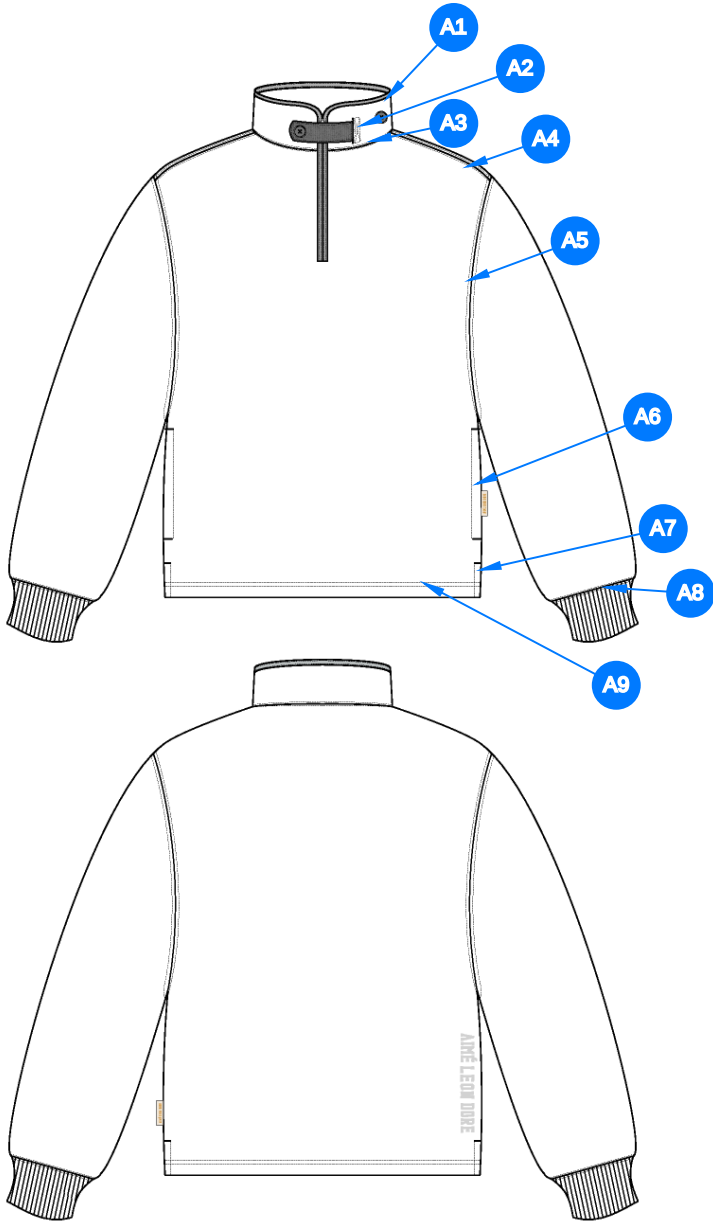
2_CLR-1



Comments (8)

- A1 FIT: GOLF HALF ZIP (SS25CS013)
- A2 CORDUROY THROAT LATCH W/ BUTTON CLOSURE INSET @ NECK - SIDE BUTTON @ NECK
- A3 ZIPPER CLOSURE @ CF - CORDUROY BINDING @ ZIPPER & NECK TRIM
- A4 POCKET @ SIDE SEAM - USE COTTON JERSEY FOR POCKET BAGS
- A5 ALD WOVEN LABEL @ SIDE SEAM
- A6 2X2 RIB DOUBLED @ SLEEVE CUFF
- A7 VENT @ SIDE SEAM - CORDUROY @ FACING
- A8 ARTWORK @ BACK WR - SEE ADDITIONAL PAGE FOR ARTWORK DETAILS

3_Construction Details-1



Comments (9)

- A1** 1/4" SN TS @ CF JERSEY BINDING - APPLIES TO TOP EDGE ONLY
- A2** BOX STITCH @ THROAT LATCH INSET
- A3** STRADDLE STITCH @ NECK
- A4** STRADDLE STITCH @ SHOULDER SEAM
- A5** STRADDLE STITCH @ ARMHOLE
- A6** 1/4" SN TS @ WELT POCKETS - ADD BAR TACKS AT TOP AND BOTTOM EDGE
- A7** STRADDLE STITCH @ SIDE SEAM
- A8** STRADDLE STITCH @ SLEEVE CUFFS
- A9** 1/4" DN TS @ BOTTOM HEM - TURNBACK HEM WITH COVERLOCK

4_Stitching Details-1

Sample Size: M

POINT OF MEASURE	HOW TO MEASURE	CRITICAL	TYPE	TOLERANCE	XS	S	M	L	XL	XXL
Front Body Length	HPS to bottom edge	true	Full	1/2 in	-7/8 in	-7/8 in	26 in	7/8 in	7/8 in	7/8 in
Back Body Length	CB neck seam to bottom edge	true	Full	1/2 in	-7/8 in	-7/8 in	25 1/4 in	7/8 in	7/8 in	7/8 in
Shoulder Slope	Shoulder point perpendicular to HPS	false	Full	1/4 in	0 in	0 in	2 1/2 in	0 in	0 in	0 in
CF Zipper Length	From neck to bottom edge	false	Full	1/4 in	0 in	-1/2 in	7 1/2 in	0 in	1/2 in	0 in
Front Neck Drop	HPS to neck seam	false	Full	1/8 in	-1/8 in	-1/8 in	4 1/4 in	1/8 in	1/8 in	1/8 in
Back Neck Drop	HPS to neck seam	false	Full	1/8 in	0 in	0 in	1/2 in	0 in	0 in	0 in
Back Neck Width	Seam to seam at back neck, at HPS point	false	Full	1/4 in	-1/4 in	-1/4 in	7 5/8 in	1/4 in	1/4 in	1/4 in
Neck Width at Top @ Top Edge		false	Full	1/8 in	-5/16 in	-5/16 in	8 3/4 in	5/16 in	5/16 in	5/16 in
Collar Height at CB	Neck seam to collar edge at CB	false	Full	1/8 in	0 in	0 in	3 in	0 in	0 in	0 in
Across Shoulder	Edge to edge	false	Half	1/4 in	-1 in	-1 in	23 in	1 in	1 1/2 in	1 1/2 in
Across Front/Across Back Position from HPS		true	Full	0 in	-1/4 in	-1/4 in	7 in	1/4 in	1/4 in	1/4 in
Across Front	Down from HPS, Seam to seam	false	Half	1/4 in	-1 in	-1 in	21 in	1 in	1 1/2 in	1 1/2 in
Across Back	Down from HPS, Seam to Seam	false	Half	1/4 in	-1 in	-1 in	21 1/2 in	1 in	1 1/2 in	1 1/2 in
Chest Width	1" Below armhole- edge to edge	true	Half	1/4 in	-1 in	-1 in	23 in	1 in	1 1/2 in	1 1/2 in
Bottom Opening Width- At Edge	At bottom edge	true	Half	1/4 in	-1 in	-1 in	23 in	1 in	1 1/2 in	1 1/2 in
Bottom Hem Height	Bottom edge to top of trim	false	Full	1/8 in	0 in	0 in	1 in	0 in	0 in	0 in
Sleeve Length from CB Neck	3-point measure from CB Neck to shoulder point to sleeve edge	true	Full	1/2 in	-1 in	-1 in	34 1/2 in	1 in	1 in	1 in
Armhole Drop	Below HPS - measure perpendicular	false	Full	1/4 in	-3/8 in	-3/8 in	13 in	3/8 in	1/2 in	1/2 in
Bicep Width	1" below armhole- edge to edge	false	Half	1/4 in	-3/8 in	-3/8 in	10 in	3/8 in	1/2 in	1/2 in
Forearm Width	9" up from sleeve cuff edge	false	Half	1/4 in	-1/4 in	-1/4 in	7 1/4 in	1/4 in	3/8 in	3/8 in
Sleeve Opening Width- At Seam	Width at Seam	false	Half	1/4 in	-1/4 in	-1/4 in	5 in	1/4 in	3/8 in	3/8 in
Sleeve Opening Width- At Edge	At edge	false	Half	1/4 in	-1/4 in	-1/4 in	3 7/8 in	1/4 in	1/4 in	1/4 in
Sleeve Cuff Height	Cuff edge to seam	false	Full	1/8 in	0 in	0 in	2 1/4 in	0 in	0 in	0 in
On-seam Pocket Opening Length	Along opening edge	false	Full	1/4 in	0 in	-1/4 in	6 1/4 in	0 in	1/4 in	0 in
On-Seam Pocket Placement from Bottom Edge		false	Full	1/8 in	0 in	0 in	4 in	0 in	0 in	0 in
Pocket Bag Height	Top edge to bottom edge of pocket bag inside	false	Full	1/8 in	0 in	0 in	10 in	0 in	0 in	0 in
Pocket Bag Width		false	Full	1/8 in	0 in	0 in	7 1/2 in	0 in	0 in	0 in
Side Slit Height	From bottom edge to top of slit	false	Full	1/8 in	0 in	0 in	2 in	0 in	0 in	0 in
Sideseam Forward Placement		false	Full	1/8 in	0 in	0 in	1/2 in	0 in	0 in	0 in
Artwork Placement from Hem Edge to Bottom Edge of Artwork		true	Full	1/8 in	0 in	0 in	1 3/4 in	0 in	0 in	0 in
Artwork Placement from Side Seam to Edge of Artwork		true	Full	1/8 in	0 in	0 in	1 1/4 in	0 in	0 in	0 in
Loop Label Placement at Sideseam	Bottom edge to bottom of loop label, at the WL side seam	false	Full	1/8 in	0 in	0 in	7 in	0 in	0 in	0 in

Sample Size: M

POINT OF MEASURE	HOW TO MEASURE	CRITICAL	TYPE	TOLERANCE	XS	S	M	L	XL	XXL
Front Body Length	HPS to bottom edge	true	Full	1/2 in	24 1/4 in	25 1/8 in	26 in	26 7/8 in	27 3/4 in	28 5/8 in
Back Body Length	CB neck seam to bottom edge	true	Full	1/2 in	23 1/2 in	24 3/8 in	25 1/4 in	26 1/8 in	27 in	27 7/8 in
Shoulder Slope	Shoulder point perpendicular to HPS	false	Full	1/4 in	2 1/2 in	2 1/2 in	2 1/2 in	2 1/2 in	2 1/2 in	2 1/2 in
CF Zipper Length	From neck to bottom edge	false	Full	1/4 in	7 in	7 in	7 1/2 in	7 1/2 in	8 in	8 in
Front Neck Drop	HPS to neck seam	false	Full	1/8 in	4 in	4 1/8 in	4 1/4 in	4 3/8 in	4 1/2 in	4 5/8 in
Back Neck Drop	HPS to neck seam	false	Full	1/8 in	1/2 in	1/2 in	1/2 in	1/2 in	1/2 in	1/2 in
Back Neck Width	Seam to seam at back neck, at HPS point	false	Full	1/4 in	7 1/8 in	7 3/8 in	7 5/8 in	7 7/8 in	8 1/8 in	8 3/8 in
Neck Width at Top @ Top Edge		false	Full	1/8 in	8 1/8 in	8 7/16 in	8 3/4 in	9 1/16 in	9 3/8 in	9 11/16 in
Collar Height at CB	Neck seam to collar edge at CB	false	Full	1/8 in	3 in	3 in	3 in	3 in	3 in	3 in
Across Shoulder	Edge to edge	false	Half	1/4 in	21 in	22 in	23 in	24 in	25 1/2 in	27 in
Across Front/Across Back Position from HPS		true	Full	0 in	6 1/2 in	6 3/4 in	7 in	7 1/4 in	7 1/2 in	7 3/4 in
Across Front	Down from HPS, Seam to seam	false	Half	1/4 in	19 in	20 in	21 in	22 in	23 1/2 in	25 in
Across Back	Down from HPS, Seam to Seam	false	Half	1/4 in	19 1/2 in	20 1/2 in	21 1/2 in	22 1/2 in	24 in	25 1/2 in
Chest Width	1" Below armhole- edge to edge	true	Half	1/4 in	21 in	22 in	23 in	24 in	25 1/2 in	27 in
Bottom Opening Width- At Edge	At bottom edge	true	Half	1/4 in	21 in	22 in	23 in	24 in	25 1/2 in	27 in
Bottom Hem Height	Bottom edge to top of trim	false	Full	1/8 in	1 in	1 in	1 in	1 in	1 in	1 in
Sleeve Length from CB Neck	3-point measure from CB Neck to shoulder point to sleeve edge	true	Full	1/2 in	32 1/2 in	33 1/2 in	34 1/2 in	35 1/2 in	36 1/2 in	37 1/2 in
Armhole Drop	Below HPS - measure perpendicular	false	Full	1/4 in	12 1/4 in	12 5/8 in	13 in	13 3/8 in	13 7/8 in	14 3/8 in
Bicep Width	1" below armhole- edge to edge	false	Half	1/4 in	9 1/4 in	9 5/8 in	10 in	10 3/8 in	10 7/8 in	11 3/8 in
Forearm Width	9" up from sleeve cuff edge	false	Half	1/4 in	6 3/4 in	7 in	7 1/4 in	7 1/2 in	7 7/8 in	8 1/4 in
Sleeve Opening Width- At Seam	Width at Seam	false	Half	1/4 in	4 1/2 in	4 3/4 in	5 in	5 1/4 in	5 5/8 in	6 in
Sleeve Opening Width- At Edge	At edge	false	Half	1/4 in	3 3/8 in	3 5/8 in	3 7/8 in	4 1/8 in	4 3/8 in	4 5/8 in
Sleeve Cuff Height	Cuff edge to seam	false	Full	1/8 in	2 1/4 in	2 1/4 in	2 1/4 in	2 1/4 in	2 1/4 in	2 1/4 in
On-seam Pocket Opening Length	Along opening edge	false	Full	1/4 in	6 in	6 in	6 1/4 in	6 1/4 in	6 1/2 in	6 1/2 in
On-Seam Pocket Placement from Bottom Edge		false	Full	1/8 in	4 in	4 in	4 in	4 in	4 in	4 in
Pocket Bag Height	Top edge to bottom edge of pocket bag inside	false	Full	1/8 in	10 in	10 in	10 in	10 in	10 in	10 in
Pocket Bag Width		false	Full	1/8 in	7 1/2 in	7 1/2 in	7 1/2 in	7 1/2 in	7 1/2 in	7 1/2 in
Side Slit Height	From bottom edge to top of slit	false	Full	1/8 in	2 in	2 in	2 in	2 in	2 in	2 in
Sideseam Forward Placement		false	Full	1/8 in	1/2 in	1/2 in	1/2 in	1/2 in	1/2 in	1/2 in
Artwork Placement from Hem Edge to Bottom Edge of Artwork		true	Full	1/8 in	1 3/4 in	1 3/4 in	1 3/4 in	1 3/4 in	1 3/4 in	1 3/4 in
Artwork Placement from Side Seam to Edge of Artwork		true	Full	1/8 in	1 1/4 in	1 1/4 in	1 1/4 in	1 1/4 in	1 1/4 in	1 1/4 in
Loop Label Placement at Sideseam	Bottom edge to bottom of loop label, at the WL side seam	false	Full	1/8 in	7 in	7 in	7 in	7 in	7 in	7 in

Measured Size: M

POINT OF MEASURE	HOW TO MEASURE	CRITICAL	TYPE	TOLERANCE	EXPECTED	PPS - RCVD	VARIANCE	ADJUST BY +/-	REVISED SPEC	MEASUREMENT NOTES
Front Body Length	HPS to bottom edge	true	Full	1/2 in	26 in	26 in	0 in	0 in	26 in	
Back Body Length	CB neck seam to bottom edge	true	Full	1/2 in	25 1/4 in	25 1/2 in	1/4 in	0 in	25 1/4 in	
Shoulder Slope	Shoulder point perpendicular to HPS	false	Full	1/4 in	2 1/2 in	2 1/2 in	0 in	0 in	2 1/2 in	
CF Zipper Length	From neck to bottom edge	false	Full	1/4 in	7 1/2 in	7 1/4 in	-1/4 in	0 in	7 1/2 in	
Front Neck Drop	HPS to neck seam	false	Full	1/8 in	4 in	4 in	0 in	1/4 in	4 1/4 in	Increase
Back Neck Drop	HPS to neck seam	false	Full	1/8 in	1/2 in	1/2 in	0 in	0 in	1/2 in	
Back Neck Width	Seam to seam at back neck, at HPS point	false	Full	1/4 in	7 1/4 in	7 1/4 in	0 in	3/8 in	7 5/8 in	Increase
Neck Width at Top @ Top Edge		false	Full	1/8 in	8 1/2 in	8 1/4 in	-1/4 in	1/4 in	8 3/4 in	Increase
Collar Height at CB	Neck seam to collar edge at CB	false	Full	1/8 in	3 in	3 1/4 in	1/4 in	0 in	3 in	Back to Spec
Across Shoulder	Edge to edge	false	Half	1/4 in	23 in	23 1/2 in	1/2 in	0 in	23 in	Back to Spec
Across Front/Across Back Position from HPS		true	Full	0 in	7 in	7 in	0 in	0 in	7 in	
Across Front	Down from HPS, Seam to seam	false	Half	1/4 in	21 in	21 in	0 in	0 in	21 in	
Across Back	Down from HPS, Seam to Seam	false	Half	1/4 in	21 1/2 in	21 1/2 in	0 in	0 in	21 1/2 in	
Chest Width	1" Below armhole- edge to edge	true	Half	1/4 in	23 in	23 1/4 in	1/4 in	0 in	23 in	
Bottom Opening Width- At Edge	At bottom edge	true	Half	1/4 in	23 in	23 in	0 in	0 in	23 in	
Bottom Hem Height	Bottom edge to top of trim	false	Full	1/8 in	1 in	1 in	0 in	0 in	1 in	
Sleeve Length from CB Neck	3-point measure from CB Neck to shoulder point to sleeve edge	true	Full	1/2 in	34 1/2 in	34 1/2 in	0 in	0 in	34 1/2 in	
Armhole Drop	Below HPS - measure perpendicular	false	Full	1/4 in	13 in	12 1/2 in	-1/2 in	0 in	13 in	Back to Spec
Bicep Width	1" below armhole- edge to edge	false	Half	1/4 in	10 in	10 1/4 in	1/4 in	0 in	10 in	
Forearm Width	9" up from sleeve cuff edge	false	Half	1/4 in	7 1/4 in	7 1/4 in	0 in	0 in	7 1/4 in	
Sleeve Opening Width- At Seam	Width at Seam	false	Half	1/4 in	5 in	4 3/4 in	-1/4 in	0 in	5 in	
Sleeve Opening Width- At Edge	At edge	false	Half	1/4 in	3 7/8 in	3 3/4 in	-1/8 in	0 in	3 7/8 in	
Sleeve Cuff Height	Cuff edge to seam	false	Full	1/8 in	2 1/4 in	2 1/8 in	-1/8 in	0 in	2 1/4 in	
On-seam Pocket Opening Length	Along opening edge	false	Full	1/4 in	6 1/4 in	6 1/4 in	0 in	0 in	6 1/4 in	
On-Seam Pocket Placement from Bottom Edge		false	Full	1/8 in	4 in	4 1/8 in	1/8 in	0 in	4 in	
Pocket Bag Height	Top edge to bottom edge of pocket bag inside	false	Full	1/8 in	10 in	10 in	0 in	0 in	10 in	
Pocket Bag Width		false	Full	1/8 in	7 1/2 in	7 1/2 in	0 in	0 in	7 1/2 in	
Side Slit Height	From bottom edge to top of slit	false	Full	1/8 in	2 in	1 7/8 in	-1/8 in	0 in	2 in	
Sideseam Forward Placement		false	Full	1/8 in	1/2 in	1/2 in	0 in	0 in	1/2 in	
Artwork Placement from Hem Edge to Bottom Edge of Artwork		true	Full	1/8 in	0 in	2 in	2 in	1 3/4 in	1 3/4 in	Follow Revised
Artwork Placement from Side Seam to Edge of Artwork		true	Full	1/8 in	0 in	1 1/4 in	1 1/4 in	1 1/4 in	1 1/4 in	Keep As Sample
Loop Label Placement at Sideseam	Bottom edge to bottom of loop label, at the WL side seam	false	Full	1/8 in	6 3/4 in	7 in	1/4 in	1/4 in	7 in	Keep As Sample

PPS - Anastasiya Zolotova

CREATED ON JUN 26, 2025 7:32 PM
PPS: SIZE:M, CREATED AT: 06-10-2025

FW25CS004 Collegiate Quarter Zip

FITTING DATE: 6/26/25

MODEL/ATTENDEES: Jessica, Cal, Anthony, Wes, Jeni, Anastasiya, Sarah

STATUS: PPS Approved to TOP (Pending Mock Up Images)

Fit Comments:

1. Increase front neck drop to 4 1/4"
 2. Increase neck width to 7 5/8".
 3. Increase neck at top edge to 8 3/4".
 4. Collar height came in +1/4", go back to spec.
 5. Across shoulder came in +1/2, go back to spec.
 6. Armhole drop came in -1/2", go back to spec.
 7. Added artwork position, move 1/4" close to hem to be 1 3/4" from hem edge to bottom edge of artwork.
 8. Added artwork position from side seam, keep as sample at 1 1/4".
 9. Keep loop label position as sample at 7" from hem.
 10. Currently the throat latch is 7/8" from neck seam to the bottom of extension. Please lower to be 5/8" from neck seam.
1. Tăng độ hạ cổ trước lên 4 1/4 inch.
 2. Tăng rộng cổ lên 7 5/8 inch.
 3. Tăng rộng cổ tại mép trên lên 8 3/4 inch.
 4. Chiều cao cổ áo bị dư 1/4 inch, điều chỉnh lại theo thông số kỹ thuật.
 5. Rộng ngang vai bị dư 1/2 inch, điều chỉnh lại theo thông số kỹ thuật.
 6. Độ hạ nách bị thiếu 1/2 inch, điều chỉnh lại theo thông số kỹ thuật.
 7. Vị trí hình in/thêu bổ sung, di chuyển gần đường lai áo hơn 1/4 inch để cách mép lai đến mép dưới hình in/thêu là 1 3/4 inch.
 8. Vị trí hình in/thêu bổ sung tính từ đường may sườn, giữ nguyên như mẫu là 1 1/4 inch.
 9. Giữ nguyên vị trí nhãn vòng như mẫu là 7 inch tính từ lai áo
 10. Hiện tại, khoảng cách từ đường may cổ đến đáy của miếng cài cổ là 7/8 inch. Vui lòng hạ xuống còn 5/8 inch tính từ đường may cổ.

Construction:

Please submit mock up of neck w/callouts #1-3. Vui lòng submit mock-up cổ như yêu cầu 1 và 3

1. Please clean finish neck with collar. Sending reference image and sample for the neck finish. This can eliminate the herringbone at the back neck and reduce bulk.
2. Sending reference sample of finishing neck tape with herringbone tape, not by binding but by top stitching to eliminate bulk. Sending reference sample.
3. I know factory said they are not able to finish zipper into the collar but I'm sending a reference sample so the fty can try this one more time.
4. Change seam direction where loop label is , loop label should face the back of the garment.
5. Please improve workmanship of the binding at bottom of zipper. The fit sample execution was much better and the curve was smoother. See image.
1. Vui lòng may sạch viền cổ áo cùng với cổ áo. Gửi kèm hình ảnh và mẫu tham khảo cho kiểu hoàn thiện cổ áo này. Điều này có thể loại bỏ phần xương cá ở cổ sau và giảm độ dày.
2. Gửi kèm mẫu tham khảo về cách hoàn thiện nếp cổ bằng băng xương cá, không phải bằng cách viền vải mà bằng cách điều đê để giảm độ dày. Gửi kèm mẫu tham khảo.
3. Tôi biết nhà máy nói rằng họ không thể hoàn thiện khóa kéo vào cổ áo, nhưng tôi đang gửi một mẫu tham khảo để nhà máy có thể thử lại lần nữa.
4. Thay đổi hướng đường may nơi có nhãn vòng, nhãn vòng nên hướng về phía sau của sản phẩm.
5. Vui lòng cải thiện chất lượng gia công của phần viền ở cuối khóa kéo. Cách thực hiện trên mẫu thử phom dáng tốt hơn nhiều và đường cong mượt mà hơn. Xem hình ảnh.



Screen Shot 2025-06-26 at 11.47.20 AM.jpg

Vui lòng cải thiện chất lượng gia công của phần viền ở cuối khóa kéo. Cách thực hiện trên mẫu thử phom dáng tốt hơn nhiều và đường cong mượt mà hơn.

FW25CS004 Collegiate Quarter Zip

Please improve workmanship of the binding at bottom of zipper. The fit sample execution was much better and the curve was smoother.

PPS:



1ST FIT:



Screen Shot 2025-06-26 at 12.18.51 PM.jpg

Thay đổi hướng đường may nơi có nhãn vòng, nhãn vòng nên hướng về phía sau của sản phẩm.

FW25CS004 Collegiate Quarter Zip

Change seam direction, loop label should face the back of the garment



Screen Shot 2025-06-26 at 12.20.57 PM.jpg

1. Vui lòng may sạch viền cổ áo cùng với cổ áo. Gửi kèm hình ảnh và mẫu tham khảo cho kiểu hoàn thiện cổ áo này. Điều này có thể loại bỏ phần xương cá ở cổ sau và giảm độ dày.
2. Gửi kèm mẫu tham khảo về cách hoàn thiện nẹp cổ bằng băng xương cá, không phải bằng cách viền vải mà bằng cách điều đê để giảm độ dày. Gửi kèm mẫu tham khảo.
3. Tôi biết nhà máy nói rằng họ không thể hoàn thiện khóa kéo vào cổ áo, nhưng tôi đang gửi một mẫu tham khảo để nhà máy có thể thử lại lần nữa.

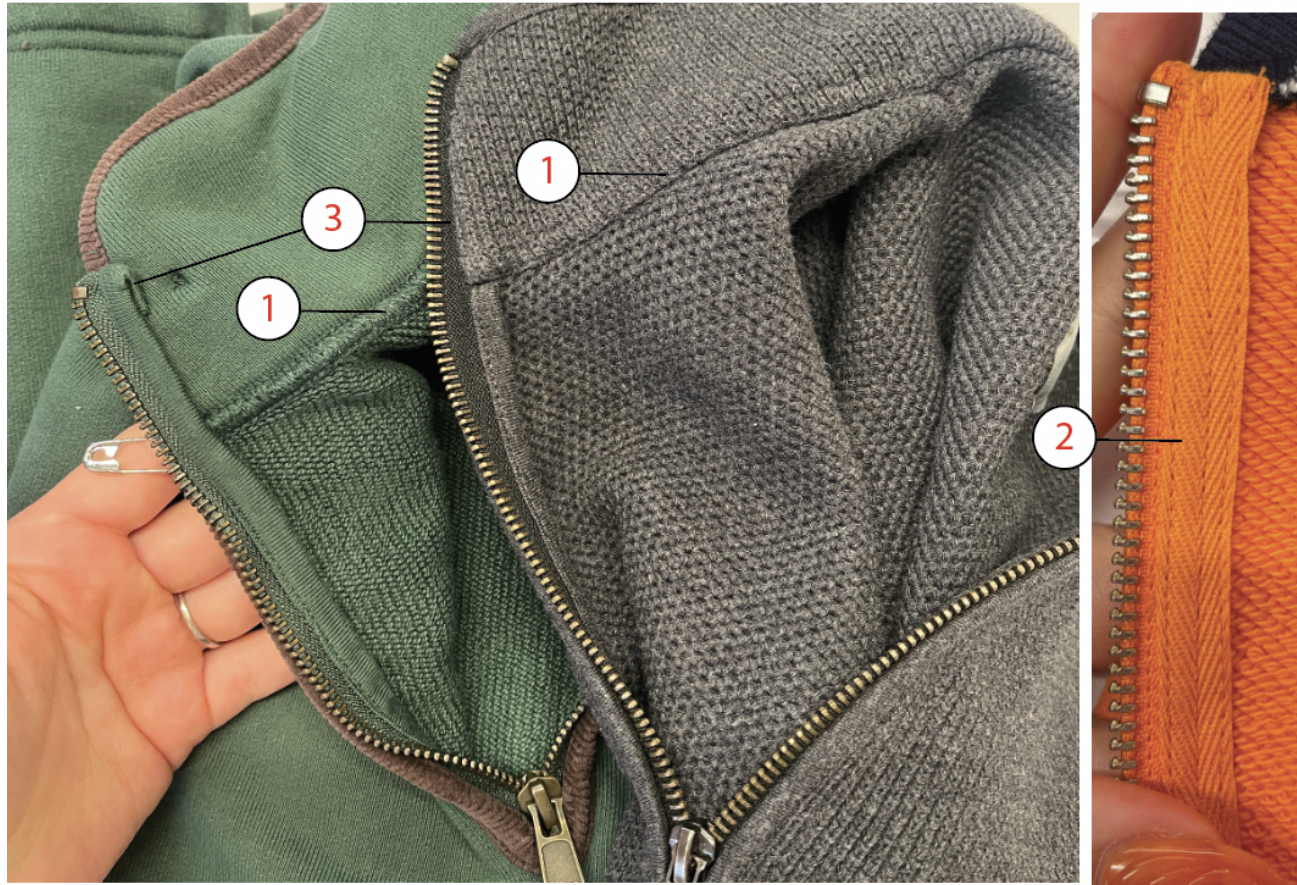
FW25CS004 Collegiate Quarter Zip

1. Please clean finish neck with collar. Sending reference image and sample for the neck finish.

This can eliminate the herringbone at the back neck and reduce bulk.

2. Sending reference sample of finishing neck tape with herringbone tape, not by binding but by top stitching to eliminate bulk. Sending reference sample.

3. I know factory said they are not able to finish zipper into the collar but I'm sending a reference sample so the fty can try this one more time.



Screen Shot 2025-06-26 at 3.29.44 PM.jpg