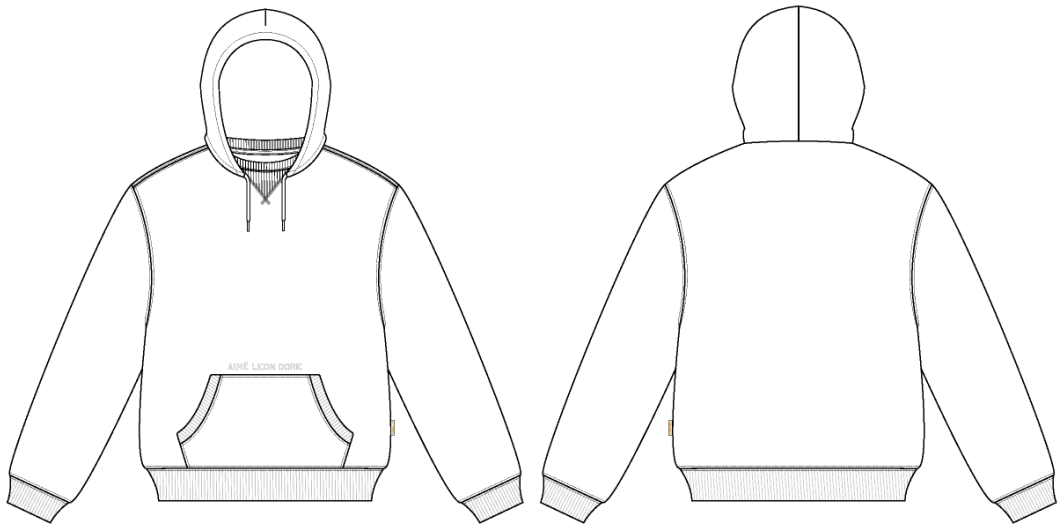


Nautical Hoodie

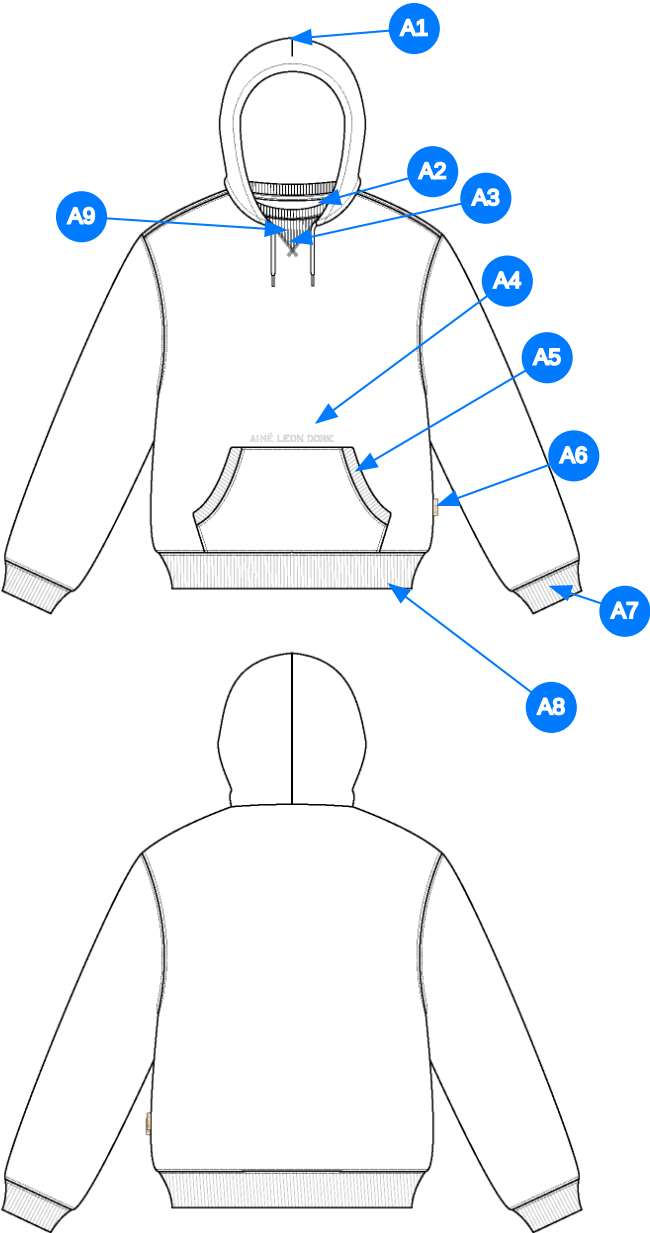
| | |
|-------------------|---|
| Name | Nautical Hoodie |
| Style No. | FW25CH005 |
| Division | Mens |
| Category | Hoodies |
| Season | Fall/Winter |
| Year | 2025 |
| Size Scale | <div>M</div> -Sample size <div><div>XS</div><div>S</div><div>M</div><div>L</div><div>XL</div><div>XXL</div></div> |
| Style Status | Adopted |
| Factory | UN-AVAILABLE |
| Designer Name | Wes |
| TD Name | Anastasiya |
| Created by/Author | 6/12/2025 Anastasiya Zolotova anastasiya.zolotova@aimeleondore.com |



1_B&W-1



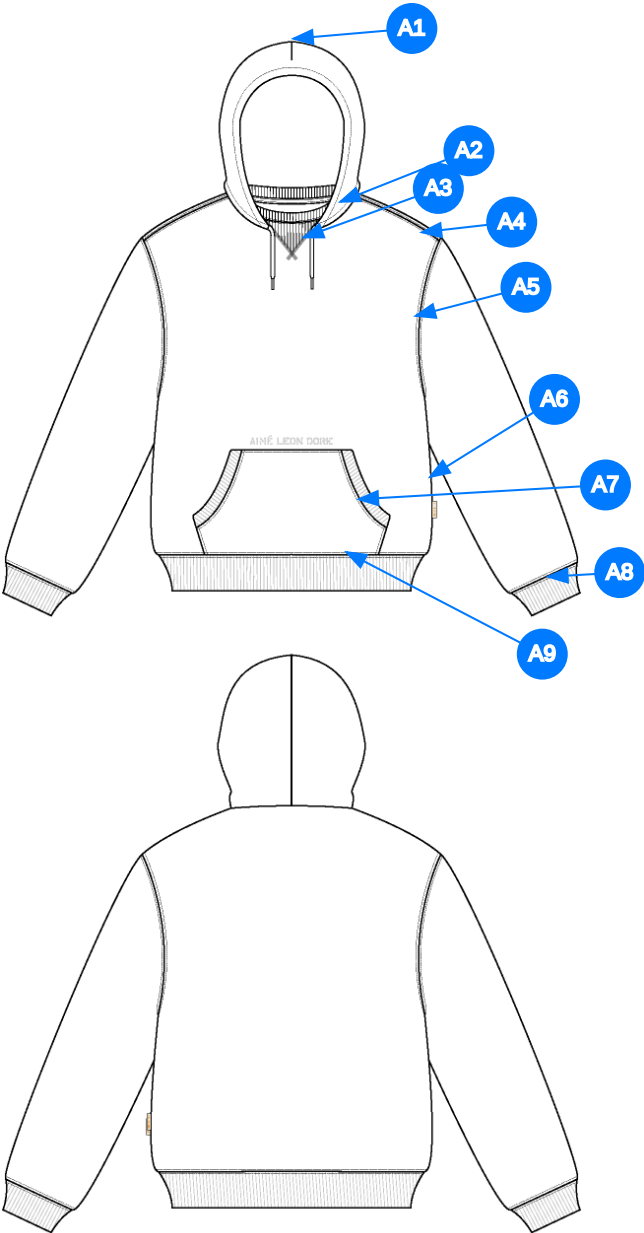
2_CLR-1



3_Construction Details-1

Comments (9)

- A1** 1 PIECE HOOD ON FOLD DART @ HOOD
- A2** ROUND BRAIDED DRAWCORDS W/ KNOTTED ENDS @ HOOD
- A3** 2X2 RIB DOUBLED @ COLLAR W/ ATTACHED HOOD - SEE ADDITIONAL PAGE FOR CONSTRUCTION REFERENCE/EXECUTION
- A4** ARTWORK @ KANGAROO POCKET - SEE ADDITIONAL FILE FOR ARTWORK DETAILS
- A5** KANGAROO POCKET @ FRONT BODY - 2X2 RIB DOUBLED BOUND POCKET ENTRY - SEE ADDITIONAL PAGE FOR POCKET SHAPE REFERENCE
- A6** ALD WOVEN LABEL @ SIDE SEAM
- A7** 2X2 RIB DOUBLED @ SLEEVE CUFF
- A8** 2X2 RIB DOUBLED @ BOTTOM HEM
- A9** 2X2 DORITO INSERT - DOUBLED



4_Stitching Details-1

- Comments (9)
- A1 DART @ HOOD -CLEAN FINISH AT CB HOOD SEAM
 - A2 STRADDLE STITCH @ HOOD
 - A3 COVERLOCK STITCH @ DORITO
 - A4 STRADDLE STITCH @ SHOULDER
 - A5 STRADDLE STITCH @ ARMHOLE
 - A6 CLEAN SEAM @ SIDE SEAM
 - A7 SN TS @ KANGAROO POCKET
 - A8 STRADDLE STITCH @ ARMHOLE
 - A9 STRADDLE STITCH @ BOTTOM HEM

Sample Size: M

| POINT OF MEASURE | HOW TO MEASURE | CRITICAL | TYPE | TOLERANCE | XS | S | M | L | XL | XXL |
|---|---|----------|------|-----------|---------|---------|-----------|--------|----------|----------|
| Front Body Length | HPS to bottom edge | true | Full | 1/2 in | -7/8 in | -7/8 in | 26 1/4 in | 7/8 in | 7/8 in | 7/8 in |
| Back Body Length | CB neck seam to bottom edge | true | Full | 1/2 in | -7/8 in | -7/8 in | 25 1/2 in | 7/8 in | 7/8 in | 7/8 in |
| Shoulder Slope | Shoulder point perpendicular to HPS | false | Full | 1/4 in | 0 in | 0 in | 2 1/2 in | 0 in | 0 in | 0 in |
| Front Neck Drop | HPS to neck seam | false | Full | 1/8 in | 0 in | -1/8 in | 3 1/2 in | 1/8 in | 1/8 in | 1/8 in |
| Back Neck Drop | HPS to neck seam | false | Full | 1/8 in | 0 in | 0 in | 3/4 in | 0 in | 0 in | 0 in |
| Back Neck Width | Seam to seam at back neck, at HPS point | false | Full | 1/4 in | 0 in | -1/4 in | 9 in | 1/4 in | 1/4 in | 1/4 in |
| Neck Trim Height | Neck Seam to trim edge (before folded) | false | Full | 1/8 in | 0 in | 0 in | 7/8 in | 0 in | 0 in | 0 in |
| Across Shoulder Width- Seam to seam | Seam to Seam | false | Full | 1/4 in | -1 in | -1 in | 22 1/2 in | 1 in | 1 1/2 in | 1 1/2 in |
| Across Front/Across Back Position from HPS | | true | Full | 0 in | -1/4 in | -1/4 in | 7 in | 1/4 in | 1/4 in | 1/4 in |
| Across Front | 7" dwn from HPS, Seam to seam | false | Half | 1/4 in | -1 in | -1 in | 20 1/2 in | 1 in | 1 1/2 in | 1 1/2 in |
| Across Back | 7" dwn from HPS, Seam to Seam | false | Half | 1/4 in | -1 in | -1 in | 21 in | 1 in | 1 1/2 in | 1 1/2 in |
| Chest Width | 1" Below armhole- edge to edge | true | Half | 1/4 in | -1 in | -1 in | 22 1/2 in | 1 in | 1 1/2 in | 1 1/2 in |
| Bottom Opening Width- At Seam | Straight with seam relaxed | true | Half | 1/4 in | -1 in | -1 in | 19 in | 1 in | 1 1/2 in | 1 1/2 in |
| Bottom Opening Width- At Edge | At bottom edge | true | Half | 1/4 in | -1 in | -1 in | 17 in | 1 in | 1 1/2 in | 1 1/2 in |
| Bottom Hem Height | Bottom edge to stitch line or trim seam | false | Full | 1/8 in | 0 in | 0 in | 2 1/2 in | 0 in | 0 in | 0 in |
| Sleeve Length from CB Neck | 3-point measure from CB Neck to shoulder point to sleeve edge | true | Full | 1/2 in | -1 in | -1 in | 35 in | 1 in | 1 in | 1 in |
| Armhole Drop | Below HPS - measure perpendicular | false | Full | 1/4 in | -3/8 in | -3/8 in | 13 in | 3/8 in | 1/2 in | 1/2 in |
| Bicep Width | 1" below armhole- edge to edge | false | Half | 1/4 in | -3/8 in | -3/8 in | 10 1/4 in | 3/8 in | 1/2 in | 1/2 in |
| Forearm Width | 9" up from sleeve cuff edge | false | Half | 1/4 in | -1/4 in | -1/4 in | 7 1/2 in | 1/4 in | 3/8 in | 3/8 in |
| Sleeve Opening Width- At Seam | Width at Seam | false | Half | 1/4 in | -1/4 in | -1/4 in | 4 3/4 in | 1/4 in | 3/8 in | 3/8 in |
| Sleeve Opening Width- At Edge | At edge | false | Half | 1/4 in | -1/4 in | -1/4 in | 3 3/4 in | 1/4 in | 1/4 in | 1/4 in |
| Sleeve Cuff Height | Cuff edge to seam | false | Full | 1/8 in | 0 in | 0 in | 2 1/2 in | 0 in | 0 in | 0 in |
| Hood Height at CF | From neck seam to top edge | false | Half | 3/8 in | 0 in | -1/4 in | 15 in | 0 in | 1/4 in | 0 in |
| Hood Height at HPS | | false | Full | 1/8 in | 0 in | -1/4 in | 13 1/2 in | 0 in | 1/4 in | 0 in |
| Hood Width 6" Below Top Edge | Straight from CF edge to CB seam- 6" down | false | Half | 3/8 in | 0 in | -1/4 in | 10 1/2 in | 1/4 in | 1/4 in | 1/4 in |
| Hood Tunnel Height | | false | Full | 1/8 in | 0 in | 0 in | 3/4 in | 0 in | 0 in | 0 in |
| Exposed Drawcord Length | | false | Full | 1/2 in | 0 in | 0 in | 10 in | 0 in | 0 in | 0 in |
| Kangaroo Pocket Height At Center | Height at center | false | Full | 1/4 in | -1/4 in | -1/4 in | 8 1/2 in | 1/4 in | 1/4 in | 1/4 in |
| Kangaroo Pocket Height at Sides | | false | Full | 1/8 in | -1/8 in | -1/8 in | 3 in | 1/8 in | 1/8 in | 1/8 in |
| Kangaroo Pocket Width at Top Edge | Width at top edge | false | Full | 1/4 in | -1/4 in | -1/4 in | 9 1/2 in | 1/4 in | 1/4 in | 1/4 in |
| Kangaroo Pocket Width at Bottom | Width at Bottom Edge | false | Full | 1/4 in | -1/4 in | -1/4 in | 12 3/4 in | 1/4 in | 1/4 in | 1/4 in |
| Kangaroo Pocket Binding Height | Edge to stitch line | false | Full | 1/8 in | 0 in | 0 in | 3/4 in | 0 in | 0 in | 0 in |
| Neck Triangle Width at Seam | Stitch Center to Stitch Center | false | Full | 1/8 in | 0 in | 0 in | 2 3/4 in | 0 in | 0 in | 0 in |
| Neck Triangle Height | Stitch Center to Stitch Center | false | Full | 1/8 in | 0 in | 0 in | 2 in | 0 in | 0 in | 0 in |
| Neck Triangle Extension Length | | true | Full | 1/8 in | 0 in | 0 in | 3/4 in | 0 in | 0 in | 0 in |
| Artwork Placement From Kangaroo Pocket Top Edge | To Bottom Edge of Artwork | false | Full | 1/8 in | -1/8 in | -1/8 in | 1/2 in | 1/8 in | 1/8 in | 1/8 in |
| Loop Label Placement at Sideseam | Bottom edge to bottom of loop label, at the WL side seam | false | Full | 1/8 in | 0 in | 0 in | 7 in | 0 in | 0 in | 0 in |

Sample Size: M

| POINT OF MEASURE | HOW TO MEASURE | CRITICAL | TYPE | TOLERANCE | XS | S | M | L | XL | XXL |
|---|---|----------|------|-----------|-----------|-----------|-----------|-----------|-----------|-----------|
| Front Body Length | HPS to bottom edge | true | Full | 1/2 in | 24 1/2 in | 25 3/8 in | 26 1/4 in | 27 1/8 in | 28 in | 28 7/8 in |
| Back Body Length | CB neck seam to bottom edge | true | Full | 1/2 in | 23 3/4 in | 24 5/8 in | 25 1/2 in | 26 3/8 in | 27 1/4 in | 28 1/8 in |
| Shoulder Slope | Shoulder point perpendicular to HPS | false | Full | 1/4 in | 2 1/2 in | 2 1/2 in | 2 1/2 in | 2 1/2 in | 2 1/2 in | 2 1/2 in |
| Front Neck Drop | HPS to neck seam | false | Full | 1/8 in | 3 3/8 in | 3 3/8 in | 3 1/2 in | 3 5/8 in | 3 3/4 in | 3 7/8 in |
| Back Neck Drop | HPS to neck seam | false | Full | 1/8 in | 3/4 in | 3/4 in | 3/4 in | 3/4 in | 3/4 in | 3/4 in |
| Back Neck Width | Seam to seam at back neck, at HPS point | false | Full | 1/4 in | 8 3/4 in | 8 3/4 in | 9 in | 9 1/4 in | 9 1/2 in | 9 3/4 in |
| Neck Trim Height | Neck Seam to trim edge (before folded) | false | Full | 1/8 in | 7/8 in | 7/8 in | 7/8 in | 7/8 in | 7/8 in | 7/8 in |
| Across Shoulder Width- Seam to seam | Seam to Seam | false | Full | 1/4 in | 20 1/2 in | 21 1/2 in | 22 1/2 in | 23 1/2 in | 25 in | 26 1/2 in |
| Across Front/Across Back Position from HPS | | true | Full | 0 in | 6 1/2 in | 6 3/4 in | 7 in | 7 1/4 in | 7 1/2 in | 7 3/4 in |
| Across Front | 7" dwn from HPS, Seam to seam | false | Half | 1/4 in | 18 1/2 in | 19 1/2 in | 20 1/2 in | 21 1/2 in | 23 in | 24 1/2 in |
| Across Back | 7" dwn from HPS, Seam to Seam | false | Half | 1/4 in | 19 in | 20 in | 21 in | 22 in | 23 1/2 in | 25 in |
| Chest Width | 1" Below armhole- edge to edge | true | Half | 1/4 in | 20 1/2 in | 21 1/2 in | 22 1/2 in | 23 1/2 in | 25 in | 26 1/2 in |
| Bottom Opening Width- At Seam | Straight with seam relaxed | true | Half | 1/4 in | 17 in | 18 in | 19 in | 20 in | 21 1/2 in | 23 in |
| Bottom Opening Width- At Edge | At bottom edge | true | Half | 1/4 in | 15 in | 16 in | 17 in | 18 in | 19 1/2 in | 21 in |
| Bottom Hem Height | Bottom edge to stitch line or trim seam | false | Full | 1/8 in | 2 1/2 in | 2 1/2 in | 2 1/2 in | 2 1/2 in | 2 1/2 in | 2 1/2 in |
| Sleeve Length from CB Neck | 3-point measure from CB Neck to shoulder point to sleeve edge | true | Full | 1/2 in | 33 in | 34 in | 35 in | 36 in | 37 in | 38 in |
| Armhole Drop | Below HPS - measure perpendicular | false | Full | 1/4 in | 12 1/4 in | 12 5/8 in | 13 in | 13 3/8 in | 13 7/8 in | 14 3/8 in |
| Bicep Width | 1" below armhole- edge to edge | false | Half | 1/4 in | 9 1/2 in | 9 7/8 in | 10 1/4 in | 10 5/8 in | 11 1/8 in | 11 5/8 in |
| Forearm Width | 9" up from sleeve cuff edge | false | Half | 1/4 in | 7 in | 7 1/4 in | 7 1/2 in | 7 3/4 in | 8 1/8 in | 8 1/2 in |
| Sleeve Opening Width- At Seam | Width at Seam | false | Half | 1/4 in | 4 1/4 in | 4 1/2 in | 4 3/4 in | 5 in | 5 3/8 in | 5 3/4 in |
| Sleeve Opening Width- At Edge | At edge | false | Half | 1/4 in | 3 1/4 in | 3 1/2 in | 3 3/4 in | 4 in | 4 1/4 in | 4 1/2 in |
| Sleeve Cuff Height | Cuff edge to seam | false | Full | 1/8 in | 2 1/2 in | 2 1/2 in | 2 1/2 in | 2 1/2 in | 2 1/2 in | 2 1/2 in |
| Hood Height at CF | From neck seam to top edge | false | Half | 3/8 in | 14 3/4 in | 14 3/4 in | 15 in | 15 in | 15 1/4 in | 15 1/4 in |
| Hood Height at HPS | | false | Full | 1/8 in | 13 1/4 in | 13 1/4 in | 13 1/2 in | 13 1/2 in | 13 3/4 in | 13 3/4 in |
| Hood Width 6" Below Top Edge | Straight from CF edge to CB seam- 6" down | false | Half | 3/8 in | 10 1/4 in | 10 1/4 in | 10 1/2 in | 10 3/4 in | 11 in | 11 1/4 in |
| Hood Tunnel Height | | false | Full | 1/8 in | 3/4 in | 3/4 in | 3/4 in | 3/4 in | 3/4 in | 3/4 in |
| Exposed Drawcord Length | | false | Full | 1/2 in | 10 in | 10 in | 10 in | 10 in | 10 in | 10 in |
| Kangaroo Pocket Height At Center | Height at center | false | Full | 1/4 in | 8 in | 8 1/4 in | 8 1/2 in | 8 3/4 in | 9 in | 9 1/4 in |
| Kangaroo Pocket Height at Sides | | false | Full | 1/8 in | 2 3/4 in | 2 7/8 in | 3 in | 3 1/8 in | 3 1/4 in | 3 3/8 in |
| Kangaroo Pocket Width at Top Edge | Width at top edge | false | Full | 1/4 in | 9 in | 9 1/4 in | 9 1/2 in | 9 3/4 in | 10 in | 10 1/4 in |
| Kangaroo Pocket Width at Bottom | Width at Bottom Edge | false | Full | 1/4 in | 12 1/4 in | 12 1/2 in | 12 3/4 in | 13 in | 13 1/4 in | 13 1/2 in |
| Kangaroo Pocket Binding Height | Edge to stitch line | false | Full | 1/8 in | 3/4 in | 3/4 in | 3/4 in | 3/4 in | 3/4 in | 3/4 in |
| Neck Triangle Width at Seam | Stitch Center to Stitch Center | false | Full | 1/8 in | 2 3/4 in | 2 3/4 in | 2 3/4 in | 2 3/4 in | 2 3/4 in | 2 3/4 in |
| Neck Triangle Height | Stitch Center to Stitch Center | false | Full | 1/8 in | 2 in | 2 in | 2 in | 2 in | 2 in | 2 in |
| Neck Triangle Extension Length | | true | Full | 1/8 in | 3/4 in | 3/4 in | 3/4 in | 3/4 in | 3/4 in | 3/4 in |
| Artwork Placement From Kangaroo Pocket Top Edge | To Bottom Edge of Artwork | false | Full | 1/8 in | 1/4 in | 3/8 in | 1/2 in | 5/8 in | 3/4 in | 7/8 in |
| Loop Label Placement at Sideseam | Bottom edge to bottom of loop label, at the WL side seam | false | Full | 1/8 in | 7 in | 7 in | 7 in | 7 in | 7 in | 7 in |

Measured Size: M

| POINT OF MEASURE | HOW TO MEASURE | CRITICAL | TYPE | TOLERANCE | EXPECTED | PPS - RCVD | VARIANCE | ADJUST BY +/- | REVISED SPEC | MEASUREMENT NOTES |
|--|---|----------|------|-----------|-----------|------------|----------|---------------|--------------|-------------------|
| Front Body Length | HPS to bottom edge | true | Full | 1/2 in | 27 in | 27 1/4 in | 1/4 in | -3/4 in | 26 1/4 in | Follow Revised |
| Back Body Length | CB neck seam to bottom edge | true | Full | 1/2 in | 26 1/4 in | 26 3/4 in | 1/2 in | -3/4 in | 25 1/2 in | Follow Revised |
| Shoulder Slope | Shoulder point perpendicular to HPS | false | Full | 1/4 in | 2 1/2 in | 2 1/4 in | -1/4 in | 0 in | 2 1/2 in | |
| Front Neck Drop | HPS to neck seam | false | Full | 1/8 in | 3 1/2 in | 3 3/4 in | 1/4 in | 0 in | 3 1/2 in | Back to Spec |
| Back Neck Drop | HPS to neck seam | false | Full | 1/8 in | 3/4 in | 3/4 in | 0 in | 0 in | 3/4 in | |
| Back Neck Width | Seam to seam at back neck, at HPS point | false | Full | 1/4 in | 9 in | 9 3/4 in | 3/4 in | 0 in | 9 in | Back to Spec |
| Neck Trim Height | Neck Seam to trim edge (before folded) | false | Full | 1/8 in | 7/8 in | 7/8 in | 0 in | 0 in | 7/8 in | |
| Across Shoulder Width- Seam to seam | Seam to Seam | false | Full | 1/4 in | 22 1/2 in | 22 3/4 in | 1/4 in | 0 in | 22 1/2 in | |
| Across Front/Across Back Position from HPS | | true | Full | 0 in | 7 in | 7 in | 0 in | 0 in | 7 in | |
| Across Front | 7" dwn from HPS, Seam to seam | false | Half | 1/4 in | 20 1/2 in | 20 1/2 in | 0 in | 0 in | 20 1/2 in | |
| Across Back | 7" dwn from HPS, Seam to Seam | false | Half | 1/4 in | 21 in | 21 in | 0 in | 0 in | 21 in | |
| Chest Width | 1" Below armhole- edge to edge | true | Half | 1/4 in | 22 1/2 in | 22 3/4 in | 1/4 in | 0 in | 22 1/2 in | |
| Bottom Opening Width- At Seam | Straight with seam relaxed | true | Half | 1/4 in | 19 1/2 in | 19 in | -1/2 in | -1/2 in | 19 in | Kepe as Sample |
| Bottom Opening Width- At Edge | At bottom edge | true | Half | 1/4 in | 17 1/2 in | 17 3/4 in | 1/4 in | -1/2 in | 17 in | Reduce |
| Bottom Hem Height | Bottom edge to stitch line or trim seam | false | Full | 1/8 in | 2 1/2 in | 2 5/8 in | 1/8 in | 0 in | 2 1/2 in | |
| Sleeve Length from CB Neck | 3-point measure from CB Neck to shoulder point to sleeve edge | true | Full | 1/2 in | 35 in | 35 1/2 in | 1/2 in | 0 in | 35 in | |
| Armhole Drop | Below HPS - measure perpendicular | false | Full | 1/4 in | 13 in | 12 3/4 in | -1/4 in | 0 in | 13 in | |
| Bicep Width | 1" below armhole- edge to edge | false | Half | 1/4 in | 10 1/4 in | 10 1/4 in | 0 in | 0 in | 10 1/4 in | |
| Forearm Width | 9" up from sleeve cuff edge | false | Half | 1/4 in | 7 1/2 in | 7 1/2 in | 0 in | 0 in | 7 1/2 in | |
| Sleeve Opening Width- At Seam | Width at Seam | false | Half | 1/4 in | 4 3/4 in | 4 3/4 in | 0 in | 0 in | 4 3/4 in | |
| Sleeve Opening Width- At Edge | At edge | false | Half | 1/4 in | 3 3/4 in | 3 7/8 in | 1/8 in | 0 in | 3 3/4 in | |
| Sleeve Cuff Height | Cuff edge to seam | false | Full | 1/8 in | 2 1/2 in | 2 3/4 in | 1/4 in | 0 in | 2 1/2 in | Back to Spec |
| Hood Height at CF | From neck seam to top edge | false | Half | 3/8 in | 15 in | 15 in | 0 in | 0 in | 15 in | |
| Hood Height at HPS | | false | Full | 1/8 in | 13 1/2 in | 14 in | 1/2 in | 0 in | 13 1/2 in | Back to Spec |
| Hood Width 6" Below Top Edge | Straight from CF edge to CB seam- 6" down | false | Half | 3/8 in | 10 1/2 in | 10 3/4 in | 1/4 in | 0 in | 10 1/2 in | |
| Hood Tunnel Height | | false | Full | 1/8 in | 3/4 in | 3/4 in | 0 in | 0 in | 3/4 in | |
| Exposed Drawcord Length | | false | Full | 1/2 in | 10 in | 10 3/4 in | 3/4 in | 0 in | 10 in | Back to Spec |
| Kangaroo Pocket Height At Center | Height at center | false | Full | 1/4 in | 8 1/2 in | 8 3/4 in | 1/4 in | 0 in | 8 1/2 in | |
| Kangaroo Pocket Height at Sides | | false | Full | 1/8 in | 3 in | 3 1/4 in | 1/4 in | 0 in | 3 in | Back to Spec |
| Kangaroo Pocket Width at Top Edge | Width at top edge | false | Full | 1/4 in | 9 1/2 in | 9 3/4 in | 1/4 in | 0 in | 9 1/2 in | |
| Kangaroo Pocket Width at Bottom | Width at Bottom Edge | false | Full | 1/4 in | 12 3/4 in | 12 3/4 in | 0 in | 0 in | 12 3/4 in | |
| Kangaroo Pocket Binding Height | Edge to stitch line | false | Full | 1/8 in | 3/4 in | 7/8 in | 1/8 in | 0 in | 3/4 in | |
| Neck Triangle Width at Seam | Stitch Center to Stitch Center | false | Full | 1/8 in | 2 3/4 in | 2 3/4 in | 0 in | 0 in | 2 3/4 in | |
| Neck Triangle Height | Stitch Center to Stitch Center | false | Full | 1/8 in | 2 1/4 in | 2 in | -1/4 in | -1/4 in | 2 in | Keep As Sample |
| Neck Triangle Extension Length | | true | Full | 1/8 in | 3/4 in | 3/4 in | 0 in | 0 in | 3/4 in | |

| | | | | | | | | | | |
|---|--|-------|------|--------|--------|--------|------|------|--------|--|
| Artwork Placement From Kangaroo Pocket Top Edge | To Bottom Edge of Artwork | false | Full | 1/8 in | 1/2 in | 1/2 in | 0 in | 0 in | 1/2 in | |
| Loop Label Placement at Sideseam | Bottom edge to bottom of loop label, at the WL side seam | false | Full | 1/8 in | 7 in | 7 in | 0 in | 0 in | 7 in | |

PPS - Anastasiya Zolotova

CREATED ON JUN 12, 2025 6:41 PM

PPS: SIZE:M, CREATED AT: 06-10-2025

FW25CH005 Nautical Hoodie

FITTING DATE: 6/12/25**MODEL/ATTENDEES:** Jessica, Cal, Anthony, Wes, Megan, Jeni, Anastasiya, Sarah**STATUS:** PPS Approved TOP**Fit Comments:**

1. Reduce front body length to 26 1/4".
2. Reduce back body length to 25 1/2"
3. Front neck drop came in +1/4", go back to spec.
4. Back neck width came in +3/4", go back to spec.
5. Bottom opening at seam came in 19" along seam, please keep as sample
6. Reduce bottom opening at rib edge to 17".
7. Sleeve cuff height came in +1/4", go back to spec.
8. Hood height at HPS came in +1/2", go back to spec.
9. Exposed drawcord length came in +3/4", please go back to spec.
10. Kangaroo pocket height at sides came in +1/4", go back to spec.
11. Neck triangle height came in 2", keep as sample.

Construction/Workmanship:

1. Change side seam to clean finish so the loop label can be going towards the back.
2. Double the rib at triangle to be double layer.

Grading:

1. Please do not grade neck/hood on XS to ensure it can comfortably get over the head.
 2. Please note changing pocket grading at side to 1/8" to keep the pocket proportion.
-
1. Vui lòng không nhảy size phần cổ/mũ cho size XS để đảm bảo có thể mặc thoải mái qua đầu.
 2. Vui lòng lưu ý thay đổi quy tắc nhảy size túi ở bên sườn thành 1/8 inch để giữ tỷ lệ túi.

1. Giảm chiều dài thân trước xuống còn 26 1/4 inch.
2. Giảm chiều dài thân sau xuống còn 25 1/2 inch.
3. Độ hạ cổ trước bị dư 1/4 inch, điều chỉnh lại theo thông số kỹ thuật.
4. Rộng cổ sau bị dư 3/4 inch, điều chỉnh lại theo thông số kỹ thuật.
5. Rộng lai áo tại đường may là 19 inch (đọc đường may), vui lòng giữ nguyên như mẫu.
6. Giảm rộng lai tại mép bo xuống còn 17 inch.
7. Chiều cao bo tay áo bị dư 1/4 inch, điều chỉnh lại theo thông số kỹ thuật.
8. Chiều cao mũ tại đỉnh vai bị dư 1/2 inch, điều chỉnh lại theo thông số kỹ thuật.
9. Chiều dài dây rút lộ ra bị dư 3/4 inch, vui lòng điều chỉnh lại theo thông số kỹ thuật.
10. Chiều cao túi kangaroo ở hai bên bị dư 1/4 inch, điều chỉnh lại theo thông số kỹ thuật.
11. Chiều cao tam giác cổ là 2 inch, giữ nguyên như mẫu.

1. Thay đổi đường may sườn thành đường may sạch, bỏ điều 2 kim, để nhãn có thể hướng về phía sau.
2. Làm bo nhãn đôi ở tam giác cổ để tạo thành hai lớp.



Screen Shot 2025-06-12 at 2.37.29 PM.jpg