

Name	Large Script Crewneck
Style No.	FW25CS007
Division	Mens
Category	Sweatshirts
Season	Fall/Winter
Year	2025
Size Scale	M -Sample size
	<div>XS S M L XL XXL</div>
Style Status	Adopted
Factory	UN-AVAILABLE
Designer Name	Lonz
TD Name	Anastasiya
Created by/Author	5/20/2025 Anastasiya Zolotova anastasiya.zolotova@aimeleondore.com

Large Script Crewneck



1_B&W-1



PINE GROVE

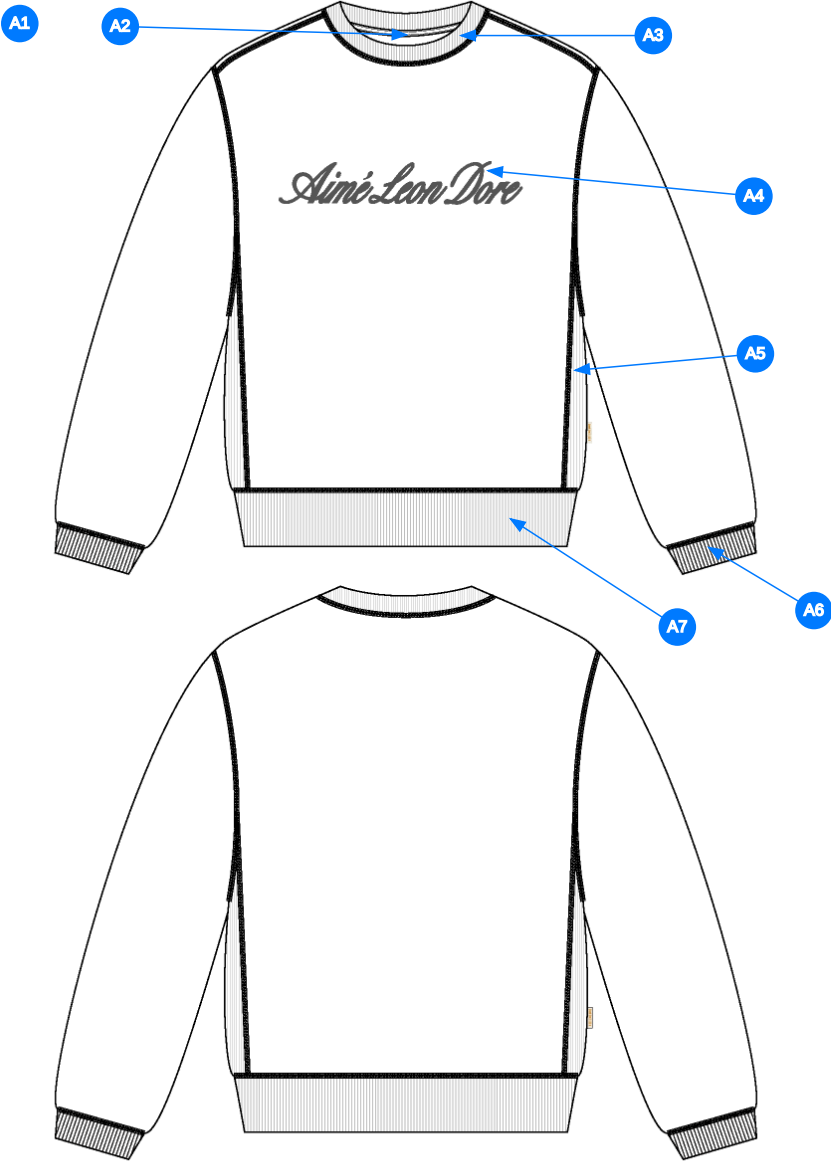


OATMEAL



SKY CAPTAIN

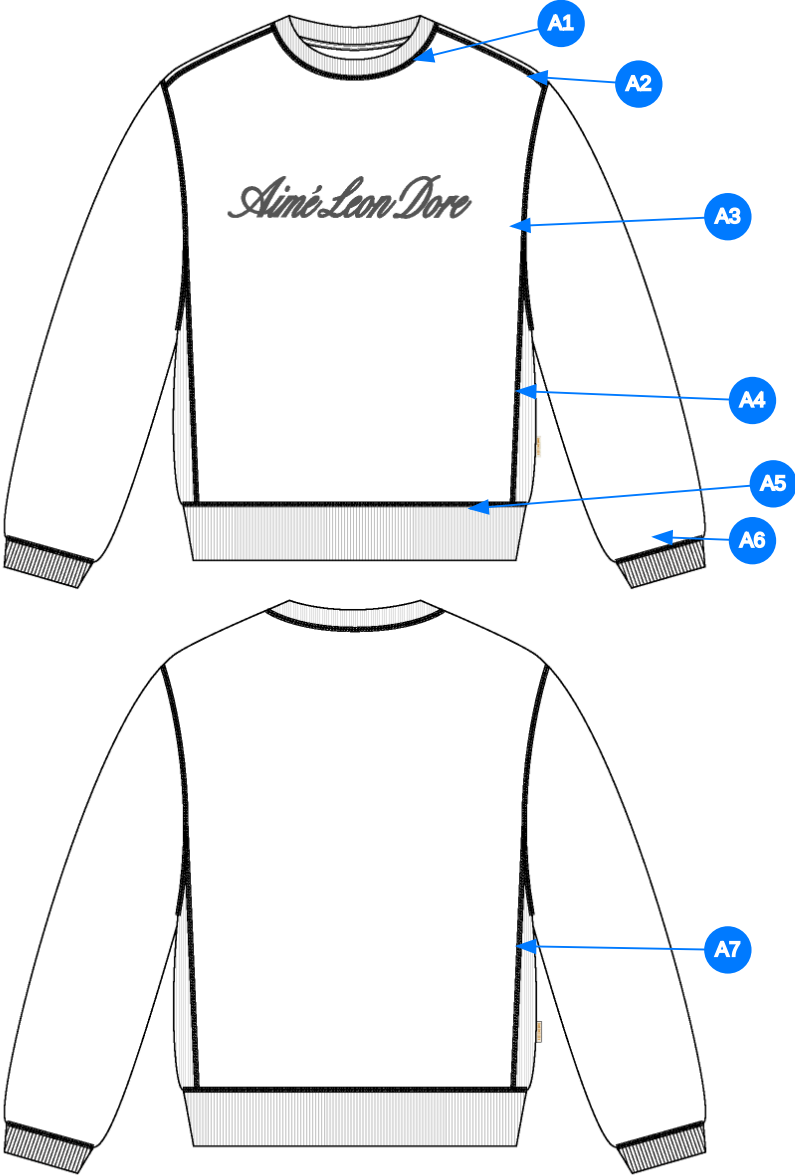
2_CLR-1



Comments (7)

- A1 FIT: REGULAR CREWNECK
- A2 HERRINGBONE TAPE @ CB NECK
- A3 2X2 RIB DOUBLED @ NECK TRIM
- A4 EMBROIDERED ARTWORK @ CF
- A5 2X2 RIB @ SIDE SEAM - ONE PANEL CONSTRUCTION - DOUBLE THE RIB PANEL
- A6 2X2 RIB DOUBLED @ SLEEVE CUFFS
- A7 2X2 RIB DOUBLED @ BOTTOM HEM

3_Construction Details-1



Comments (7)

- A1 COVERLOCK STITCH @ NECK
- A2 COVERLOCK STITCH @ SHOULDER
- A3 COVERLOCK STITCH @ ARMHOLE
- A4 COVERLOCK STITCH @ SET IN PANEL
- A5 COVERLOCK STITCH @ BOTTOM HEM
- A6 COVERLOCK STITCH @ SLEEVE CUFFS
- A7 COVERLOCK STITCH @ SET IN PANEL

4_Stitching Details-1

Sample Size: M

POINT OF MEASURE	HOW TO MEASURE	CRITICAL	TYPE	TOLERANCE	XS	S	M	L	XL	XXL
Front Body Length	HPS to bottom edge	true	Full	1/2 in	-7/8 in	-7/8 in	27 in	7/8 in	7/8 in	7/8 in
Back Body Length	CB neck seam to bottom edge	true	Full	1/2 in	-7/8 in	-7/8 in	25 3/4 in	7/8 in	7/8 in	7/8 in
Shoulder Seam Forward	HPS to seam	false	Full	1/8 in	0 in	0 in	1/2 in	0 in	0 in	0 in
Shoulder Slope	Shoulder point perpendicular to HPS	false	Full	1/4 in	0 in	0 in	1 3/4 in	0 in	0 in	0 in
Front Neck Drop	HPS to neck seam	false	Full	1/8 in	-1/8 in	-1/8 in	4 in	1/8 in	1/8 in	1/8 in
Back Neck Drop	HPS to neck seam	false	Full	1/8 in	0 in	0 in	1 1/4 in	0 in	0 in	0 in
Back Neck Width	Seam to seam at back neck, at HPS point	false	Full	1/4 in	-1/4 in	-1/4 in	7 3/4 in	1/4 in	1/4 in	1/4 in
Neck Trim Height	Neck Seam to trim edge	false	Full	1/8 in	0 in	0 in	13/16 in	0 in	0 in	0 in
Minimum Neck Stretch		true	Half	0 in	0 in	0 in	11 1/2 in	0 in	0 in	0 in
Across Shoulder	Seam to seam	false	Half	1/4 in	-3/4 in	-3/4 in	20 1/2 in	3/4 in	1 in	1 in
Across Front/Across Back Position from HPS		true	Full	0 in	-1/4 in	-1/4 in	7 in	1/4 in	1/4 in	1/4 in
Across Front	Down from HPS, Seam to seam	false	Half	1/4 in	-3/4 in	-3/4 in	19 in	3/4 in	1 in	1 in
Across Back	Down from HPS, Seam to Seam	false	Half	1/4 in	-3/4 in	-3/4 in	19 1/2 in	3/4 in	1 in	1 in
Chest Width	1" Below armhole- edge to edge	true	Half	1/4 in	-1 in	-1 in	22 3/4 in	1 in	1 1/2 in	1 1/2 in
Bottom Opening 2" Above Rib Knit Seam		true	Half	1/4 in	-1 in	-1 in	21 3/4 in	1 in	1 1/2 in	1 1/2 in
Bottom Opening Width- Along Seam Relaxed		true	Half	1/2 in	-1 in	-1 in	20 1/4 in	1 in	1 1/2 in	1 1/2 in
Bottom Opening Width- At Edge	At bottom edge	true	Half	1/4 in	-1 in	-1 in	17 in	1 in	1 1/2 in	1 1/2 in
Bottom Hem Height	Bottom edge to stitch line or trim seam	false	Full	1/8 in	0 in	0 in	2 3/4 in	0 in	0 in	0 in
Side Panel Body Width - Total	Seam to Seam	true	Full	1/8 in	0 in	0 in	5 1/2 in	0 in	0 in	0 in
Sleeve Length from CB Neck	3-point measure from CB Neck to shoulder point to sleeve edge	true	Full	1/2 in	-1 in	-1 in	35 in	1 in	1 in	1 in
Armhole Drop	Below HPS - measure perpendicular	false	Full	1/4 in	-3/8 in	-3/8 in	12 1/2 in	3/8 in	1/2 in	1/2 in
Bicep Width	1" below armhole- edge to edge	false	Half	1/4 in	-3/8 in	-3/8 in	9 1/2 in	3/8 in	1/2 in	1/2 in
Forearm Width	9" up from sleeve cuff edge	false	Half	1/4 in	-1/4 in	-1/4 in	7 1/4 in	1/4 in	3/8 in	3/8 in
Sleeve Opening Width 1" Above Rib Knit Seam		true	Half	1/4 in	-1/4 in	-1/4 in	5 3/8 in	1/4 in	3/8 in	3/8 in
Sleeve Opening Width- At Edge	At edge	false	Half	1/4 in	-1/4 in	-1/4 in	3 3/4 in	1/4 in	1/4 in	1/4 in
Sleeve Opening Width- At Seam	Width at Seam	false	Half	1/4 in	0 in	0 in	4 3/4 in	0 in	0 in	0 in
Sleeve Cuff Height	Cuff edge to seam	false	Full	1/8 in	0 in	0 in	2 3/4 in	0 in	0 in	0 in
CF Artwork Placement below CF Neckline	From CF Neck Seam to Top Edge of Artwork	false	Full	1/8 in	-1/8 in	-1/8 in	4 in	1/8 in	1/8 in	1/8 in
Loop Label Placement at Sideseam	Bottom edge to bottom of loop label, at the WL side seam	false	Full	1/8 in	0 in	0 in	7 in	0 in	0 in	0 in

Sample Size: M

POINT OF MEASURE	HOW TO MEASURE	CRITICAL	TYPE	TOLERANCE	XS	S	M	L	XL	XXL
Front Body Length	HPS to bottom edge	true	Full	1/2 in	25 1/4 in	26 1/8 in	27 in	27 7/8 in	28 3/4 in	29 5/8 in
Back Body Length	CB neck seam to bottom edge	true	Full	1/2 in	24 in	24 7/8 in	25 3/4 in	26 5/8 in	27 1/2 in	28 3/8 in
Shoulder Seam Forward	HPS to seam	false	Full	1/8 in	1/2 in	1/2 in	1/2 in	1/2 in	1/2 in	1/2 in
Shoulder Slope	Shoulder point perpendicular to HPS	false	Full	1/4 in	1 3/4 in	1 3/4 in	1 3/4 in	1 3/4 in	1 3/4 in	1 3/4 in
Front Neck Drop	HPS to neck seam	false	Full	1/8 in	3 3/4 in	3 7/8 in	4 in	4 1/8 in	4 1/4 in	4 3/8 in
Back Neck Drop	HPS to neck seam	false	Full	1/8 in	1 1/4 in	1 1/4 in	1 1/4 in	1 1/4 in	1 1/4 in	1 1/4 in
Back Neck Width	Seam to seam at back neck, at HPS point	false	Full	1/4 in	7 1/4 in	7 1/2 in	7 3/4 in	8 in	8 1/4 in	8 1/2 in
Neck Trim Height	Neck Seam to trim edge	false	Full	1/8 in	13/16 in	13/16 in	13/16 in	13/16 in	13/16 in	13/16 in
Minimum Neck Stretch		true	Half	0 in	11 1/2 in	11 1/2 in	11 1/2 in	11 1/2 in	11 1/2 in	11 1/2 in
Across Shoulder	Seam to seam	false	Half	1/4 in	19 in	19 3/4 in	20 1/2 in	21 1/4 in	22 1/4 in	23 1/4 in
Across Front/Across Back Position from HPS		true	Full	0 in	6 1/2 in	6 3/4 in	7 in	7 1/4 in	7 1/2 in	7 3/4 in
Across Front	Down from HPS, Seam to seam	false	Half	1/4 in	17 1/2 in	18 1/4 in	19 in	19 3/4 in	20 3/4 in	21 3/4 in
Across Back	Down from HPS, Seam to Seam	false	Half	1/4 in	18 in	18 3/4 in	19 1/2 in	20 1/4 in	21 1/4 in	22 1/4 in
Chest Width	1" Below armhole- edge to edge	true	Half	1/4 in	20 3/4 in	21 3/4 in	22 3/4 in	23 3/4 in	25 1/4 in	26 3/4 in
Bottom Opening 2" Above Rib Knit Seam		true	Half	1/4 in	19 3/4 in	20 3/4 in	21 3/4 in	22 3/4 in	24 1/4 in	25 3/4 in
Bottom Opening Width- Along Seam Relaxed		true	Half	1/2 in	18 1/4 in	19 1/4 in	20 1/4 in	21 1/4 in	22 3/4 in	24 1/4 in
Bottom Opening Width- At Edge	At bottom edge	true	Half	1/4 in	15 in	16 in	17 in	18 in	19 1/2 in	21 in
Bottom Hem Height	Bottom edge to stitch line or trim seam	false	Full	1/8 in	2 3/4 in	2 3/4 in	2 3/4 in	2 3/4 in	2 3/4 in	2 3/4 in
Side Panel Body Width - Total	Seam to Seam	true	Full	1/8 in	5 1/2 in	5 1/2 in	5 1/2 in	5 1/2 in	5 1/2 in	5 1/2 in
Sleeve Length from CB Neck	3-point measure from CB Neck to shoulder point to sleeve edge	true	Full	1/2 in	33 in	34 in	35 in	36 in	37 in	38 in
Armhole Drop	Below HPS - measure perpendicular	false	Full	1/4 in	11 3/4 in	12 1/8 in	12 1/2 in	12 7/8 in	13 3/8 in	13 7/8 in
Bicep Width	1" below armhole- edge to edge	false	Half	1/4 in	8 3/4 in	9 1/8 in	9 1/2 in	9 7/8 in	10 3/8 in	10 7/8 in
Forearm Width	9" up from sleeve cuff edge	false	Half	1/4 in	6 3/4 in	7 in	7 1/4 in	7 1/2 in	7 7/8 in	8 1/4 in
Sleeve Opening Width 1" Above Rib Knit Seam		true	Half	1/4 in	4 7/8 in	5 1/8 in	5 3/8 in	5 5/8 in	6 in	6 3/8 in
Sleeve Opening Width- At Edge	At edge	false	Half	1/4 in	3 1/4 in	3 1/2 in	3 3/4 in	4 in	4 1/4 in	4 1/2 in
Sleeve Opening Width- At Seam	Width at Seam	false	Half	1/4 in	4 3/4 in	4 3/4 in	4 3/4 in	4 3/4 in	4 3/4 in	4 3/4 in
Sleeve Cuff Height	Cuff edge to seam	false	Full	1/8 in	2 3/4 in	2 3/4 in	2 3/4 in	2 3/4 in	2 3/4 in	2 3/4 in
CF Artwork Placement below CF Neckline	From CF Neck Seam to Top Edge of Artwork	false	Full	1/8 in	3 3/4 in	3 7/8 in	4 in	4 1/8 in	4 1/4 in	4 3/8 in
Loop Label Placement at Sideseam	Bottom edge to bottom of loop label, at the WL side seam	false	Full	1/8 in	7 in	7 in	7 in	7 in	7 in	7 in

Measured Size: M

POINT OF MEASURE	HOW TO MEASURE	CRITICAL	TYPE	TOLERANCE	EXPECTED	PPS - RCVD	VARIANCE	ADJUST BY +/-	REVISED SPEC	MEASUREMENT NOTES
Front Body Length	HPS to bottom edge	true	Full	1/2 in	27 in	27 1/2 in	1/2 in	0 in	27 in	
Back Body Length	CB neck seam to bottom edge	true	Full	1/2 in	25 3/4 in	26 1/4 in	1/2 in	0 in	25 3/4 in	
Shoulder Seam Forward	HPS to seam	false	Full	1/8 in	1 1/2 in	1/2 in	0 in	0 in	1/2 in	
Shoulder Slope	Shoulder point perpendicular to HPS	false	Full	1/4 in	1 3/4 in	1 7/8 in	1/8 in	0 in	1 3/4 in	
Front Neck Drop	HPS to neck seam	false	Full	1/8 in	4 in	4 in	0 in	0 in	4 in	
Back Neck Drop	HPS to neck seam	false	Full	1/8 in	1 1/4 in	1 1/8 in	-1/8 in	0 in	1 1/4 in	
Back Neck Width	Seam to seam at back neck, at HPS point	false	Full	1/4 in	7 3/4 in	7 1/2 in	-1/4 in	0 in	7 3/4 in	
Neck Trim Height	Neck Seam to trim edge	false	Full	1/8 in	13/16 in	7/8 in	1/16 in	0 in	13/16 in	
Minimum Neck Stretch		true	Half	0 in	11 1/2 in	0 in	0 in	0 in	11 1/2 in	
Across Shoulder	Seam to seam	false	Half	1/4 in	20 1/2 in	20 1/2 in	0 in	0 in	20 1/2 in	
Across Front/Across Back Position from HPS		true	Full	0 in	7 in	7 in	0 in	0 in	7 in	
Across Front	Down from HPS, Seam to seam	false	Half	1/4 in	19 in	19 in	0 in	0 in	19 in	
Across Back	Down from HPS, Seam to Seam	false	Half	1/4 in	19 1/2 in	19 3/4 in	1/4 in	0 in	19 1/2 in	
Chest Width	1" Below armhole- edge to edge	true	Half	1/4 in	22 3/4 in	23 in	1/4 in	0 in	22 3/4 in	
Bottom Opening 2" Above Rib Knit Seam		true	Half	1/4 in	21 3/4 in	21 3/4 in	0 in	0 in	21 3/4 in	
Bottom Opening Width- Along Seam Relaxed		true	Half	1/2 in	20 1/4 in	19 3/4 in	-1/2 in	0 in	20 1/4 in	
Bottom Opening Width- At Edge	At bottom edge	true	Half	1/4 in	17 in	17 in	0 in	0 in	17 in	
Bottom Hem Height	Bottom edge to stitch line or trim seam	false	Full	1/8 in	2 3/4 in	2 7/8 in	1/8 in	0 in	2 3/4 in	
Side Panel Body Width - Total	Seam to Seam	true	Full	1/8 in	5 1/2 in	5 3/4 in	1/4 in	0 in	5 1/2 in	Back to Spec
Sleeve Length from CB Neck	3-point measure from CB Neck to shoulder point to sleeve edge	true	Full	1/2 in	35 in	35 1/8 in	1/8 in	0 in	35 in	
Armhole Drop	Below HPS - measure perpendicular	false	Full	1/4 in	12 1/2 in	12 3/8 in	-1/8 in	0 in	12 1/2 in	
Bicep Width	1" below armhole- edge to edge	false	Half	1/4 in	9 1/2 in	9 1/2 in	0 in	0 in	9 1/2 in	
Forearm Width	9" up from sleeve cuff edge	false	Half	1/4 in	7 1/4 in	7 in	-1/4 in	0 in	7 1/4 in	
Sleeve Opening Width 1" Above Rib Knit Seam		true	Half	1/4 in	5 3/8 in	5 3/8 in	0 in	0 in	5 3/8 in	
Sleeve Opening Width- At Edge	At edge	false	Half	1/4 in	3 3/4 in	3 3/4 in	0 in	0 in	3 3/4 in	
Sleeve Opening Width- At Seam	Width at Seam	false	Half	1/4 in	4 3/4 in	4 7/8 in	1/8 in	0 in	4 3/4 in	
Sleeve Cuff Height	Cuff edge to seam	false	Full	1/8 in	2 3/4 in	2 7/8 in	1/8 in	0 in	2 3/4 in	
CF Artwork Placement below CF Neckline	From CF Neck Seam to Top Edge of Artwork	false	Full	1/8 in	3 3/4 in	4 in	1/4 in	1/4 in	4 in	Keep As Sample
Loop Label Placement at Sideseam	Bottom edge to bottom of loop label, at the WL side seam	false	Full	1/8 in	7 in	7 in	0 in	0 in	7 in	

PPS - Anastasiya Zolotova

CREATED ON MAY 20, 2025 9:41 PM
PPS: SIZE:M, CREATED AT: 05-15-2025

FW25CS007 Large Script Crewneck

FITTING DATE: 5/13/25

MODEL/ATTENDEES: Jessica, Cal, Anthony, Wes, Megan, Jeni, Anastasiya

STATUS: PPS Approved to TOP

Fit Comments:

1. Side panel width came in +1/4", go back to spec.

2. Keep CF artwork placement as sample at 4" below CF neck seam.

3. Remove decorative Dorito/triangle stitching at CF.
1. Chiều rộng miếng đắp sườn bị dư 1/4 inch, điều chỉnh lại theo thông số kỹ thuật.

2. Giữ nguyên vị trí hình in giữa thân trước theo mẫu, cách đường may cổ giữa thân trước 4 inch.

3. Loại bỏ đường may trang trí hình Dorito/tam giác ở giữa thân trước



Screen Shot 2025-05-20 at 5.40.40 PM.jpg