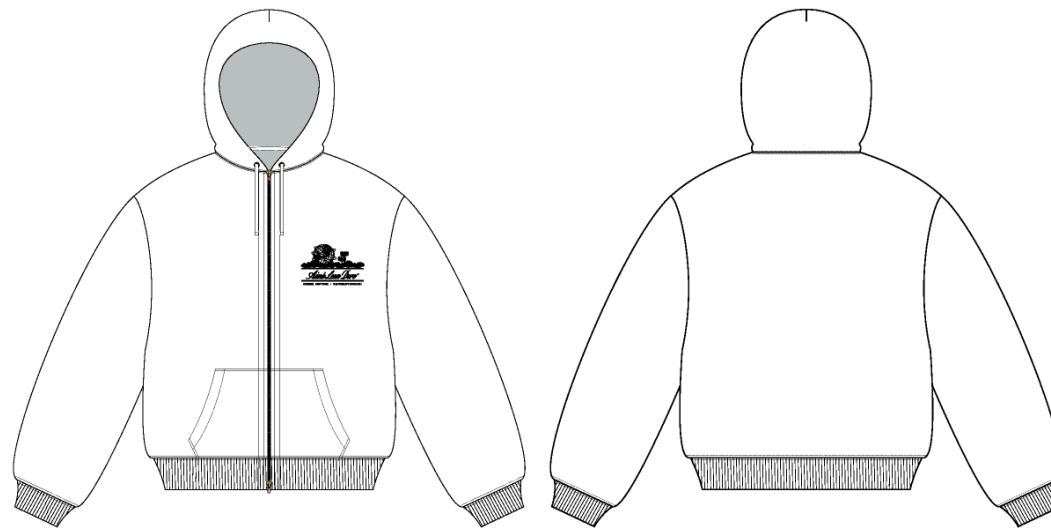


Waffle Lined Hoodie

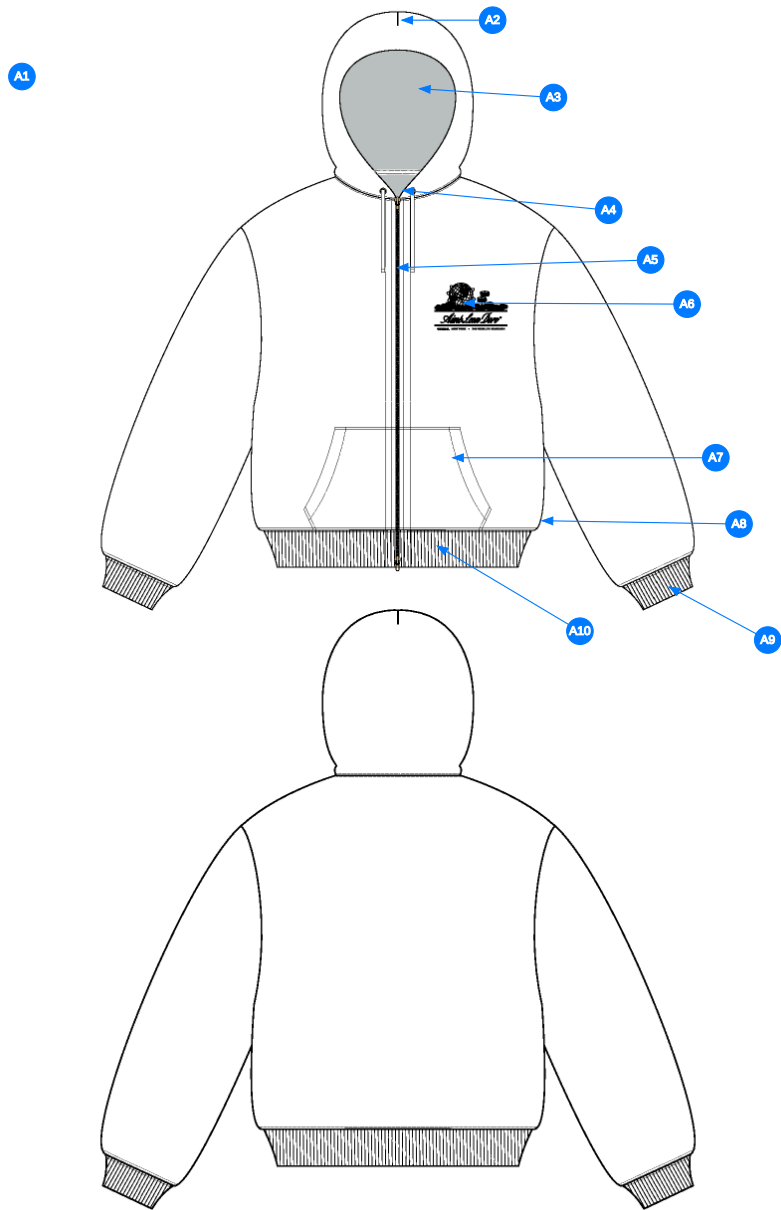
Name	Waffle Lined Hoodie
Style No.	FW25CH001
Division	Mens
Category	Hoodies
Season	Fall/Winter
Year	2025
Size Scale	<div>M -Sample size</div> <div><div>XS</div><div>S</div><div>M</div><div>L</div><div>XL</div><div>XXL</div></div>
Style Status	Adopted
Factory	UN-AVAILABLE
Designer Name	Lonz
TD Name	Anastasiya
Created by/Author	2/19/2025 Anastasiya Zolotova anastasiya.zolotova@aimeleondore.com



1_B&W-1



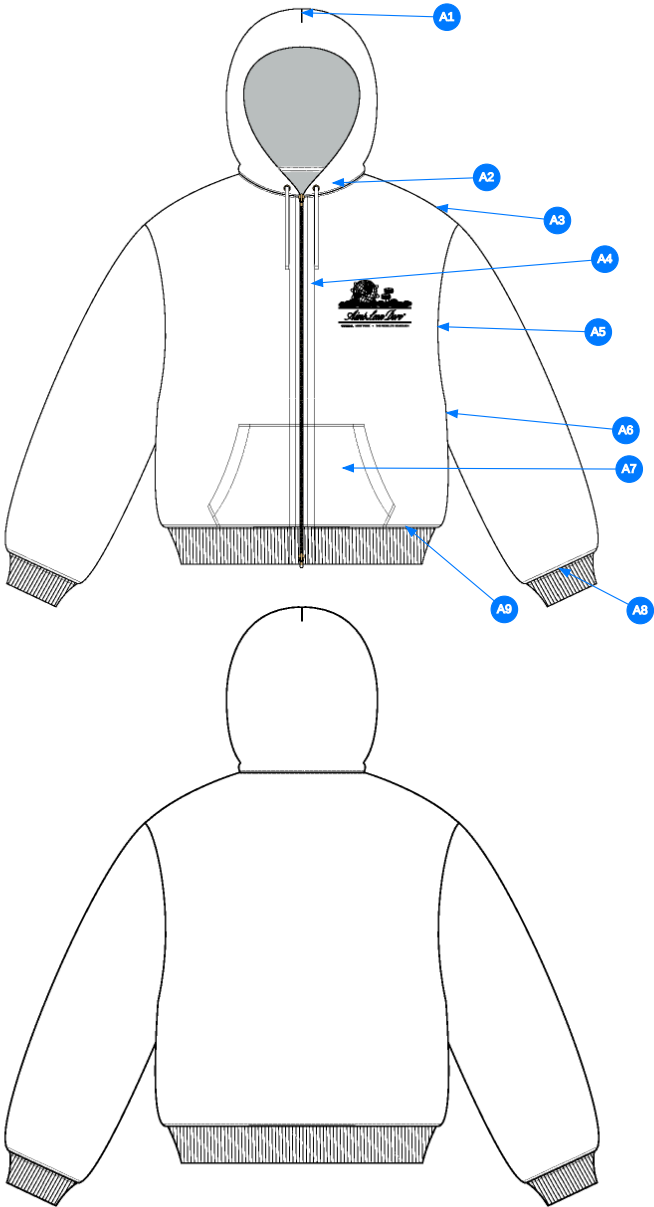
2_CLR-1



Comments (10)

- A1 FIT: WASHED FULL ZIP HOODIE (SS25CH002)
- A2 DART @ HOOD
- A3 FULLY LINED @ HOOD - HOOD LINED W/ WAFFLE - HERRINGBONE TAPE ALONG NECK
- A4 METAL EYELETS W/ DRAWCORDS @ HOOD
- A5 ZIPPER @ CF - KISSING WELT CONSTRUCTION
- A6 ARTWORK @ WL CHEST
- A7 KANGAROO POCKET @ FRONT BODY
- A8 WOVEN LABEL @ SIDE SEAM
- A9 2X2 RIB DOUBLED @ SLEEVE CUFFS
- A10 2X2 RIB DOUBLED @ BOTTOM HEM

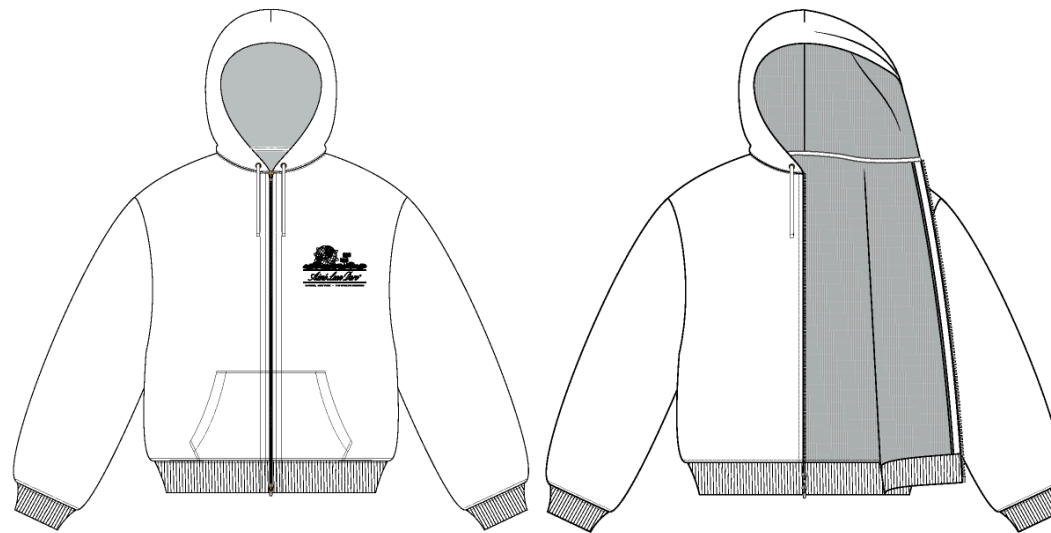
3_Construction Details-1



Comments (9)

- A1 DART @ HOOD
- A2 CLEAN SEAM FINISH @ NECK
- A3 CLEAN SEAM FINISH @ SHOULDER
- A4 1/4" DN TS @ CF
- A5 CLEAN SEAM FINISH @ ARMHOLE
- A6 CLEAN SEAM FINISH @ ARMHOLE
- A7 SEE FOLLOWING PAGES FOR STITCHING DETAILS
- A8 STRADDLE STITCHING @ SLEEVE CUFF
- A9 STRADDLE STITCHING @ BOTTOM HEM

4_Stitching Details-1



5_Construction Details-1

Measured Size: M

POINT OF MEASURE	HOW TO MEASURE	CRITICAL	TYPE	TOLERANCE	EXPECTED	1ST PROTO - RCVD	VARIANCE	ADJUST BY +/-	REVISED SPEC	MEASUREMENT NOTES
Front Body Length	HPS to bottom edge	true	Full	1/4 in	26 3/4 in	26 1/2 in	-1/4 in	0 in	26 3/4 in	
Back Body Length	CB neck seam to bottom edge	true	Full	1/4 in	26 in	25 3/4 in	-1/4 in	0 in	26 in	
CF Zipper Length	From neck to bottom edge	false	Full	1/4 in	23 1/2 in	23 in	-1/2 in	0 in	23 1/2 in	Back to Spec
Front Neck Drop	HPS to neck seam	false	Full	1/8 in	3 1/2 in	3 1/2 in	0 in	0 in	3 1/2 in	
Back Neck Drop	HPS to neck seam	false	Full	1/8 in	3/4 in	3/4 in	0 in	0 in	3/4 in	
Back Neck Width	Seam to seam at back neck, at HPS point	false	Full	1/4 in	9 in	8 3/4 in	-1/4 in	0 in	9 in	
Shoulder Seam Forward	HPS to seam	false	Full	1/8 in	1/2 in	3/8 in	-1/8 in	0 in	1/2 in	
Shoulder Slope	Shoulder point perpendicular to HPS	false	Full	1/4 in	2 1/2 in	2 7/8 in	3/8 in	0 in	2 1/2 in	Back to Spec
Across Shoulder	Seam to seam	false	Half	1/4 in	24 in	23 1/2 in	-1/2 in	0 in	24 in	Back to Spec
Across Front/Across Back Position from HPS		true	Full	0 in	7 in	7 in	0 in	0 in	7 in	
Across Front	Straight Down from HPS, Seam to Seam	false	Half	1/4 in	22 1/2 in	22 in	-1/2 in	0 in	22 1/2 in	Back to Spec
Across Back	Straight Down from HPS, Seam to Seam	false	Half	1/4 in	22 1/2 in	22 1/4 in	-1/4 in	0 in	22 1/2 in	
Chest Width	1" Below armhole- edge to edge	true	Half	1/4 in	24 in	23 1/2 in	-1/2 in	1/2 in	24 1/2 in	Increase
Bottom Opening 2" Above Rib Knit Seam		true	Half	1/4 in	22 in	22 in	0 in	1 in	23 in	Increase
Bottom Opening Width- At Edge	At bottom edge	true	Half	1/4 in	18 in	18 1/2 in	1/2 in	1/2 in	18 1/2 in	Keep As Sample
Bottom Trim Height	Bottom edge to top of trim	false	Full	1/8 in	2 3/4 in	2 3/4 in	0 in	0 in	2 3/4 in	
Sleeve Length from CB Neck	3-point measure from CB Neck to shoulder point to sleeve edge	true	Full	1/2 in	35 in	35 1/4 in	1/4 in	0 in	35 in	
Armhole Drop	Below HPS - measure perpendicular	false	Full	1/4 in	13 in	13 1/4 in	1/4 in	1/4 in	13 1/4 in	Keep As Sample
Bicep Width	1" below armhole- edge to edge	false	Half	1/4 in	10 1/4 in	10 1/4 in	0 in	1/4 in	10 1/2 in	Increase
Forearm Width	9" up from sleeve cuff edge	false	Half	1/4 in	7 1/2 in	7 3/8 in	-1/8 in	1/4 in	7 3/4 in	Increase
Sleeve Opening Width 1" Above Rib Knit Seam		true	Half	1/4 in	5 1/2 in	5 3/8 in	-1/8 in	1/4 in	5 3/4 in	Increase
Sleeve Opening Width- At Seam	Width at Seam	false	Half	1/4 in	0 in	0 in	0 in	4 3/4 in	4 3/4 in	Add
Sleeve Opening Width- At Edge	At edge	false	Half	1/4 in	3 3/4 in	3 3/4 in	0 in	1/8 in	3 7/8 in	Increase
Sleeve Cuff Height	Cuff edge to seam	false	Full	1/8 in	2 3/4 in	2 3/4 in	0 in	0 in	2 3/4 in	
Hood Height at CF	From neck seam to top edge	false	Half	3/8 in	15 in	15 1/2 in	1/2 in	1/2 in	15 1/2 in	Keep As Sample
Hood Width @ HPS		true	Full	1/4 in	13 1/2 in	14 in	1/2 in	1/2 in	14 in	Keep As Sample
Hood Width 6" Below Top Edge	Straight from CF edge to CB seam- 6" down	false	Half	3/8 in	10 1/2 in	10 1/4 in	-1/4 in	1/2 in	11 in	Increase
Exposed Drawcord Length		false	Full	1/2 in	10 in	10 1/2 in	1/2 in	0 in	10 in	
Drawcord Opening Placement up from Neck Seam		false	Full	1/8 in	1 in	1 in	0 in	0 in	1 in	
Kangaroo Pocket Opening Hem Height		false	Full	1/8 in	7/8 in	7/8 in	0 in	0 in	7/8 in	
Kangaroo Pocket Opening	Height at center	false	Full	1/4 in	6 in	5 3/4 in	-1/4 in	0 in	6 in	
Kangaroo Pocket Height At Center	Height at center	false	Full	1/4 in	8 1/2 in	8 3/8 in	-1/8 in	0 in	8 1/2 in	
Kangaroo Pocket Width at Top Edge	Width at top edge	false	Full	1/4 in	9 3/4 in	9 1/4 in	-1/2 in	0 in	9 3/4 in	Back to Spec
Kangaroo Pocket Width at Bottom	Width at Bottom Edge	false	Full	1/4 in	13 in	12 1/4 in	-3/4 in	0 in	13 in	Back To Spec
WL Artwork Placement from HPS to Top Edge		true	Full	1/8 in	8 1/2 in	0 in	0 in	0 in	8 1/2 in	
WL Artwork Placement Out from CF Line		false	Full	1/8 in	3 in	0 in	0 in	0 in	3 in	

Loop Label Placement at Sideseam	Bottom edge to bottom of loop label, at the WL side seam	false	Full	1/8 in	7 in	6 3/4 in	-1/4 in	0 in	7 in	Back to Spec
----------------------------------	--	-------	------	--------	------	----------	---------	------	------	--------------

1st Proto - Anastasiya Zolotova

CREATED ON FEB 18, 2025 10:47 PM

1ST PROTO: SIZE:M, CREATED AT: 02-10-2025

FW25CH001 Waffle Lined Hoodie

FITTING DATE: 2/13/24**MODEL/ATTENDEES:** Jessica, Cal, Wes, Megan, Jeni, Anastasiya**STATUS:** 1st Proto Approved to 1st Fit**Fit Comments:**

1. CF zipper length came in -1/2", go back to spec.
2. Shoulder slope came in +3/8", go back to spec.
3. Across shoulder came in -1/2", go back to spec.
4. Across front came in -1/2", go back to spec.
5. Increase chest width to 24 1/2".
6. Increase bottom opening 2" above seam to 23".
7. Increase bottom opening at seam proportionally.
8. Keep bottom opening at rib edge at 18 1/2"
9. Keep armhole drop as sample at 13 1/4".
10. Increase bicep to 10 1/2".
11. Increase forearm to 7 3/4".
12. Increase sleeve opening width 1" above rib knit seam to 5 3/4".
13. Added sleeve opening at seam to be 4 3/4".
14. Increase sleeve opening at rib edge to be 3 7/8"
15. Keep hood height at CF as sample at 15 1/2".
16. Keep hood height at HPS as sample at 14".
17. Increase hood width 6" below top edge to be 11".
18. Kangaroo pocket width at top edge came in -1/2", go back to spec.
19. Kangaroo pocket width at bottom edge came in -3/4", go back to spec.
20. Increase self turnback at hood to be 1/2". Waffle lining rolling forward too much.

Construction/Workmanship:

1. Add bar tacks to kangaroo pocket opening at corners.

1. thêm bọ tại góc túi

Fit Comments:

1. dài dây kéo -1/2", điều chỉnh thông số trong dung sai
2. xuôi vai +3/8", điều chỉnh thông số trong dung sai
3. ngang vai -1/2", điều chỉnh thông số trong dung sai
4. ngang thân trước -1/2", điều chỉnh thông số trong dung sai
5. tăng rộng ngực 24 1/2"
6. tăng rộng áo trên đường may lai 2" lên 23"
7. tăng rộng áo tại đường may theo tỷ lệ
8. giữ rộng lai áo tại mép rib 18 1/2"
9. giữ hạ nách như mẫu 13 1/4"
10. tăng bắp tay 10 1/2"
11. tăng căng tay 7 3/4"
12. tăng rộng lai tay trên đường may rib 1" lên 5 3/4"
13. thêm rộng lai tay tại đường may 4 3/4"
14. tăng rộng lai tay tại mép rib 3 7/8"
15. giữ cao nón tại giữ trước như mẫu 15 1/2"
16. giữ cao nón tại đỉnh vai như mẫu 14"
17. tăng rộng nón từ mép trên đỉnh nón hạ 6" là 11"
18. rộng túi kangaroo tại mép trên -1/2", điều chỉnh thông số trong dung sai
19. rộng túi kangaroo tại mép dưới -3/4", điều chỉnh thông số trong dung sai
20. tăng nếp gấp bằng vải chính tại nón 1/2". xem hình bên dưới



Screen Shot 2025-02-18 at 4.35.36 PM.jpg

FW25CH001 Waffle Lined Hoodie

tăng vải chính lên 1/2" như hình

Increase self turnback at hood to be 1/2". Waffle lining rolling forward too much.



Screen Shot 2025-02-18 at 5.49.10 PM.jpg

FW25CH001		THÔNG SỐ FIT										
Sample Size: M	POINT OF MEASURE	HOW TO MEASURE		CRITICAL	TYPE	TOLERANCE	M	PROTO - RCVD size M	VARIANCE	ADJUST BY +/-	REVISED SPEC	MEASUREMENT NOTES
Front Body Length	DÀI ÁO THÂN TRƯỚC	HPS to bottom edge	TỪ ĐỈNH VAI ĐẾN MÉP LẠI	true	Full	1/4 in	26 3/4 in	26 1/2 in	-1/4 in	0 in	26 3/4 in	
Back Body Length	DÀI ÁO THÂN SAU	CB neck seam to bottom edge	TỪ GIỮA CỔ SAU ĐẾN LẠI	true	Full	1/4 in	26 in	25 3/4 in	-1/4 in	0 in	26 in	
CF Zipper Length	DÀI DÂY KÉO TRƯỚC	From neck to bottom edge	TỪ CỔ ĐẾN MÉP LẠI	false	Full	1/4 in	23 1/2 in	23 in	-1/2 in	0 in	23 1/2 in	Back to Spec
Front Neck Drop	HẠ CỔ TRƯỚC	HPS to neck seam	ĐỈNH VAI ĐẾN ĐƯỜNG MAY CỔ	false	Full	1/8 in	3 1/2 in	3 1/2 in	0 in	0 in	3 1/2 in	
Back Neck Drop	HẠ CỔ SAU	HPS to neck seam	ĐỈNH VAI ĐẾN ĐƯỜNG MAY CỔ	false	Full	1/8 in	3/4 in	3/4 in	0 in	0 in	3/4 in	
Back Neck Width	RỘNG CỔ SAU	Seam to seam at back neck, at HPS point	TỪ ĐƯỜNG MAY ĐẾN ĐƯỜNG MAY, TẠI ĐỈNH VAI	false	Full	1/4 in	9 in	8 3/4 in	-1/4 in	0 in	9 in	
Shoulder Seam Forward	CHỖM VAI	HPS to seam	ĐƯỜNG MAY TỚI ĐƯỜNG MAY	false	Full	1/8 in	1/2 in	3/8 in	-1/8 in	0 in	1/2 in	
Shoulder Slope	XUÔI VAI	Shoulder point perpendicular to HPS	TỪ ĐỈNH VAI, ĐO VUÔNG GÓC VỚI ĐẦU VAI	false	Full	1/4 in	2 1/2 in	2 7/8 in	3/8 in	0 in	2 1/2 in	Back to Spec
Across Shoulder	NGANG VAI	Seam to seam	TỪ ĐƯỜNG MAY ĐẾN ĐƯỜNG MAY	false	Half	1/4 in	24 in	23 1/2 in	-1/2 in	0 in	24 in	Back to Spec
Across Front/Across Back Position from HPS	VỊ TRÍ ĐO NGANG THÂN TRƯỚC/NGANG THÂN SAU TỪ ĐỈNH VAI			true	Full	0 in	7 in	7 in	0 in	0 in	7 in	
Across Front	NGANG NGỰC	Straight Down from HPS, Seam to Seam	HẠ THẲNG TỪ ĐỈNH VAI - ĐƯỜNG MAY ĐẾN ĐƯỜNG MAY	false	Half	1/4 in	22 1/2 in	22 in	-1/2 in	0 in	22 1/2 in	Back to Spec
Across Back	NGANG LƯNG	Straight Down from HPS, Seam to Seam	HẠ THẲNG TỪ ĐỈNH VAI - ĐƯỜNG MAY ĐẾN ĐƯỜNG MAY	false	Half	1/4 in	22 1/2 in	22 1/4 in	-1/4 in	0 in	22 1/2 in	
Chest Width	RỘNG NGỰC	1" Below armhole- edge to edge	1" DƯỚI NÁCH, MÉP TỚI MÉP	true	Half	1/4 in	24 in	23 1/2 in	-1/2 in	1/2 in	24 1/2 in	Increase
Bottom Opening 2" Above Rib Knit Seam	RỘNG ÁO TRÊN ĐƯỜNG MAY LẠI 2"			true	Half	1/4 in	22 in	22 in	0 in	1 in	23 in	Increase
Bottom Opening Width- At Edge	RỘNG LẠI ÁO TẠI MÉP LẠI	At bottom edge	TẠI MÉP LẠI	true	Half	1/4 in	18 in	18 1/2 in	1/2 in	1/2 in	18 1/2 in	Keep As Sample
Bottom Trim Height	CAO BỎ LẠI	Bottom edge to top of trim	TẠI MÉP DƯỚI BỎ ĐẾN CẠNH TRÊN	false	Full	1/8 in	2 3/4 in	2 3/4 in	0 in	0 in	2 3/4 in	
Sleeve Length from CB Neck	DÀI TAY TỪ GIỮA CỔ SAU	3-point measure from CB Neck to shoulder point to sleeve edge	3 ĐIỂM TỪ GIỮA CỔ SAU ĐẾN ĐẦU VAI ĐẾN MÉP TAY	true	Full	1/2 in	35 in	35 1/4 in	1/4 in	0 in	35 in	
Armhole Drop	HẠ NÁCH	Below HPS - measure perpendicular	DƯỚI ĐỈNH VAI - ĐO VUÔNG GÓC HỖM NÁCH	false	Full	1/4 in	13 in	13 1/4 in	1/4 in	1/4 in	13 1/4 in	Keep As Sample
Bicep Width	RỘNG BẮP TAY	1" below armhole- edge to edge	1" DƯỚI NÁCH, MÉP TỚI MÉP	false	Half	1/4 in	10 1/4 in	10 1/4 in	0 in	1/4 in	10 1/2 in	Increase
Forearm Width	RỘNG KHÚY TAY	9" up from sleeve cuff edge	9" LÊN TỪ MÉP BỎ TAY	false	Half	1/4 in	7 1/2 in	7 3/8 in	-1/8 in	1/4 in	7 3/4 in	Increase
Sleeve Opening Width 1" Above Rib Knit Seam	RỘNG CỬA TAY TRÊN ĐƯỜNG MAY BỎ 1"			true	Half	1/4 in	5 1/2 in	5 3/8 in	-1/8 in	1/4 in	5 3/4 in	Increase
Sleeve Opening Width- At Seam	RỘNG CỬA TAY TẠI ĐƯỜNG MAY	Width at Seam	TẠI ĐƯỜNG MAY	false	Half	1/4 in	0 in	0 in	0 in	4 3/4 in	4 3/4 in	Add
Sleeve Opening Width- At Edge	RỘNG CỬA TAY TẠI MÉP	At edge	TẠI MÉP	false	Half	1/4 in	3 3/4 in	3 3/4 in	0 in	1/8 in	3 7/8 in	Increase
Sleeve Cuff Height	CAO BỎ TAY	Cuff edge to seam	MÉP ĐẾN ĐƯỜNG MAY	false	Full	1/8 in	2 3/4 in	2 3/4 in	0 in	0 in	2 3/4 in	
Hood Height at CF	CAO NÓN TẠI GIỮA TRƯỚC	From neck seam to top edge	TỪ ĐƯỜNG MAY CỔ ĐẾN MÉP	false	Half	3/8 in	15 in	15 1/2 in	1/2 in	1/2 in	15 1/2 in	Keep As Sample
Hood Width @ HPS	RỘNG NÓN TẠI ĐỈNH VAI			true	Full	1/4 in	13 1/2 in	14 in	1/2 in	1/2 in	14 in	Keep As Sample
Hood Width 6" Below Top Edge	RỘNG NÓN TỪ MÉP TRÊN ĐỈNH NÓN HẠ 6"	Straight from CF edge to CB seam- 6" down	HẠ 6" TỪ ĐỈNH NÓN, ĐO TỪ MIỆNG NÓN ĐẾN SÓNG NÓN	false	Half	3/8 in	10 1/2 in	10 1/4 in	-1/4 in	1/2 in	11 in	Increase

Exposed Drawcord Length	CHIỀU DÀI DÂY LUỒN LỘ RA NGOÀI			false	Full	1/2 in	10 in	10 1/2 in	1/2 in	0 in	10 in	
Drawcord Opening Placement up from Neck Seam	VỊ TRÍ MẮT CỎ TỪ ĐƯỜNG MAY CỎ			false	Full	1/8 in	1 in	1 in	0 in	0 in	1 in	
Kangaroo Pocket Opening Hem Height	CAO MIỆNG TÚI KANGAROO			false	Full	1/8 in	7/8 in	7/8 in	0 in	0 in	7/8 in	
Kangaroo Pocket Opening	RỘNG MIỆNG TÚI KANGAROO	Height at center	ĐO Ở GIỮA TÚI	false	Full	1/4 in	6 in	5 3/4 in	-1/4 in	0 in	6 in	
Kangaroo Pocket Height At Center	RỘNG TÚI Ở GIỮA	Height at center	ĐO Ở GIỮA TÚI	false	Full	1/4 in	8 1/2 in	8 3/8 in	-1/8 in	0 in	8 1/2 in	
Kangaroo Pocket Width at Top Edge	RỘNG TÚI Ở CẠNH TRÊN	Width at top edge	ĐO TẠI CẠNH TRÊN	false	Full	1/4 in	9 3/4 in	9 1/4 in	-1/2 in	0 in	9 3/4 in	Back to Spec
Kangaroo Pocket Width at Bottom	RỘNG TÚI Ở CẠNH DƯỚI	Width at Bottom Edge	ĐO TẠI CẠNH DƯỚI	false	Full	1/4 in	13 in	12 1/4 in	-3/4 in	0 in	13 in	Back To Spec
WL Artwork Placement from HPS to Top Edge	VỊ TRÍ ARTWORK TỪ ĐỈNH VAI ĐẾN ĐỈNH ARTWORK			true	Full	1/8 in	8 1/2 in	0 in	0 in	0 in	8 1/2 in	
WL Artwork Placement Out from CF Line	VỊ TRÍ ARTWORK TỪ GIỮA TRƯỚC			false	Full	1/8 in	3 in	0 in	0 in	0 in	3 in	
Loop Label Placement at Sideseam	VỊ TRÍ NHÃN CỜ TẠI SƯỜN	Bottom edge to bottom of loop label, at the WL side seam	MÉP LẠI ĐẾN CẠNH DƯỚI NHÃN - TẠI SƯỜN TRÁI NGƯỜI MẶC	false	Full	1/8 in	7 in	6 3/4 in	-1/4 in	0 in	7 in	Back to Spec