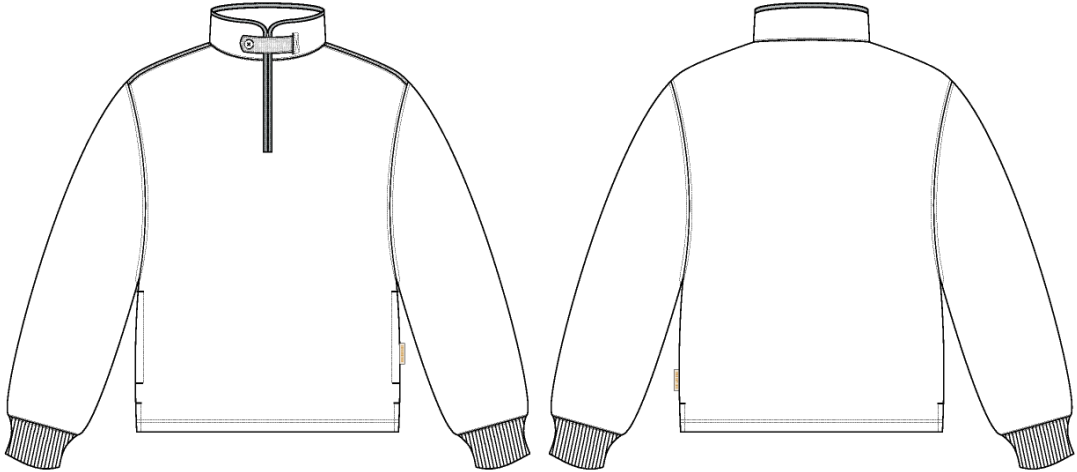


Collegiate Quarter Zip

Name	Collegiate Quarter Zip
Style No.	FW25CS004
Division	Mens
Category	Sweatshirts
Season	Fall/Winter
Year	2025
Size Scale	M -Sample size
	XS S M L XL XXL
Style Status	Adopted
Factory	UN-AVAILABLE
Designer Name	Wes
TD Name	Anastasiya
Created by/Author	2/19/2025 Anastasiya Zolotova anastasiya.zolotova@aimeleondore.com



1_B&W-1



NAVAL ACADEMY

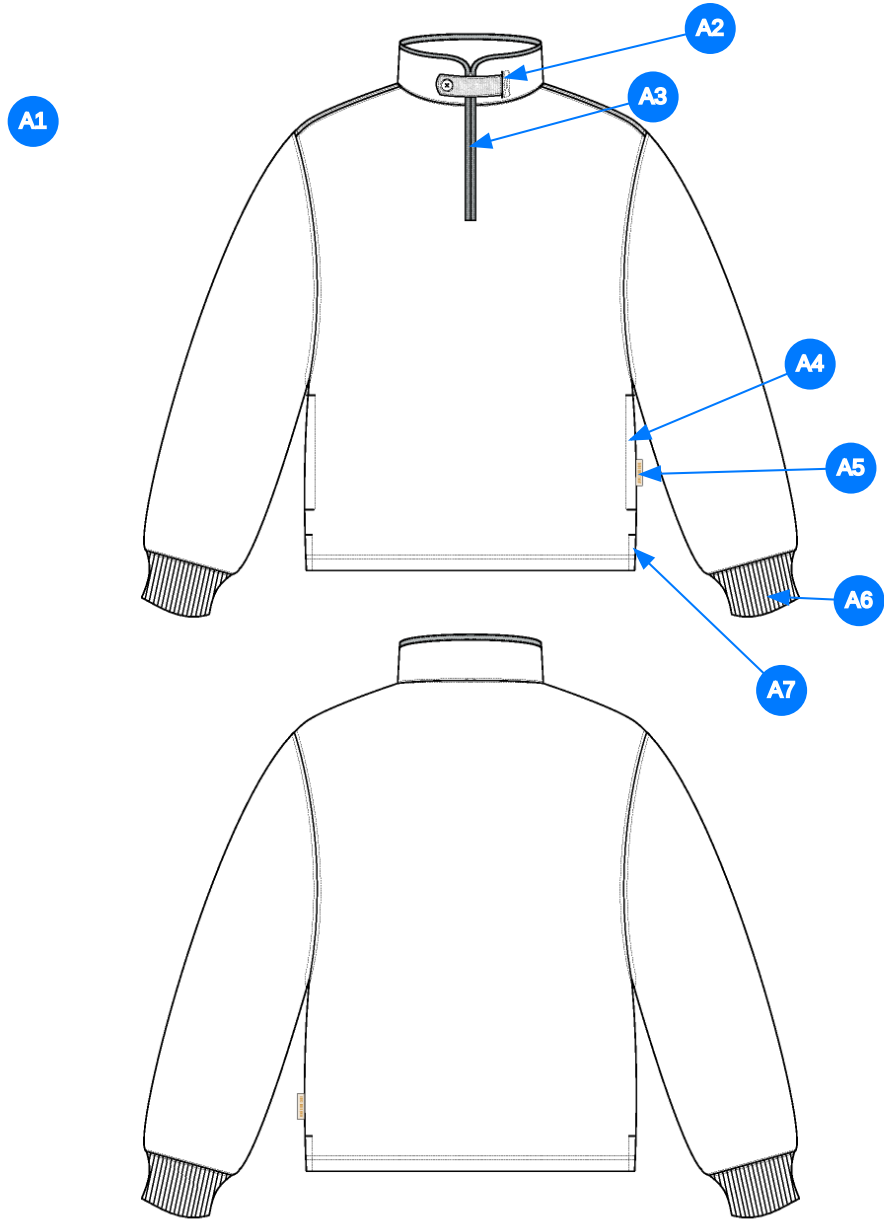


CHOCOLATE TRUFFLE



JUNGLE GREEN

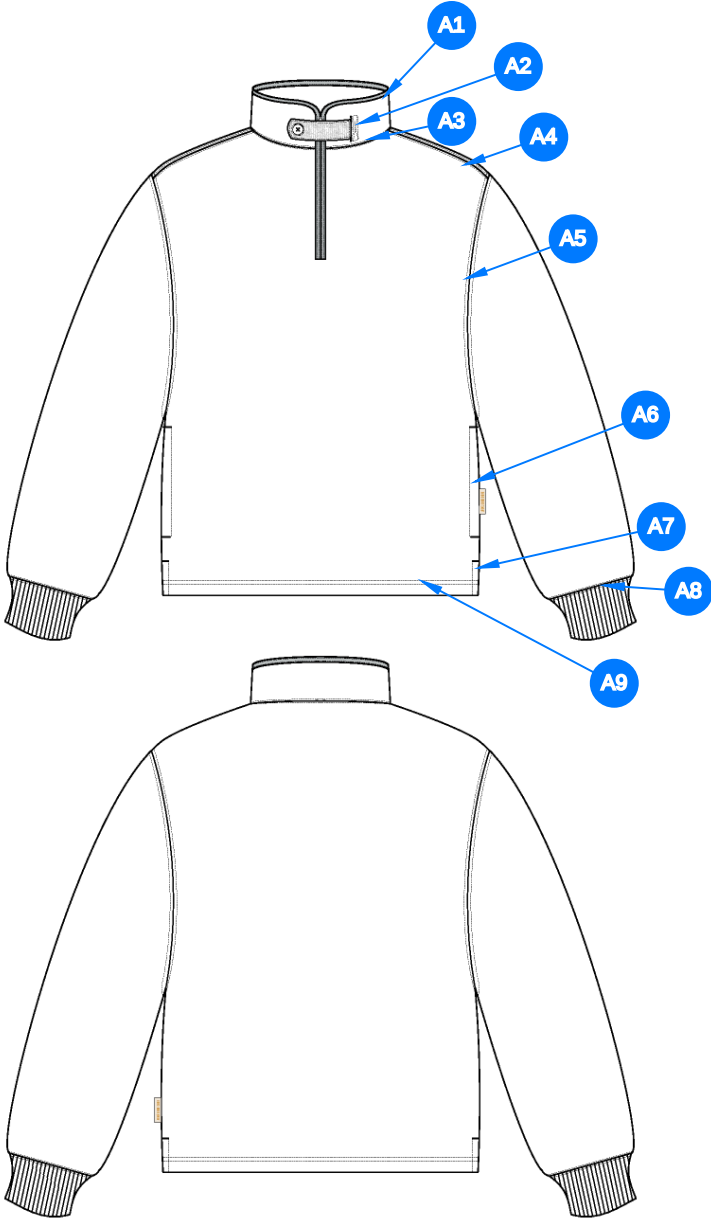
2_CLR-1



Comments (7)

- A1 FIT: GOLF HALF ZIP (SS25CS013)
- A2 CORDUROY THROAT LATCH W/ BUTTON CLOSURE INSET @ NECK
- A3 ZIPPER CLOSURE @ CF - CORDUROY BINDING @ ZIPPER & NECK TRIM
- A4 POCKET @ SIDE SEAM - USE COTTON JERSEY FOR POCKET BAGS
- A5 ALD WOVEN LABEL @ SIDE SEAM
- A6 2X2 RIB DOUBLED @ SLEEVE CUFF
- A7 VENT @ SIDE SEAM - CORDUROY @ FACING

3_Construction Details-1



Comments (9)

- A1** 1/4" SN TS @ CF JERSEY BINDING - APPLIES TO TOP EDGE ONLY
- A2** BOX STITCH @ THROAT LATCH INSET
- A3** STRADDLE STITCH @ NECK
- A4** STRADDLE STITCH @ SHOULDER SEAM
- A5** STRADDLE STITCH @ ARMHOLE
- A6** 1/4" SN TS @ WELT POCKETS - ADD BAR TACKS AT TOP AND BOTTOM EDGE
- A7** STRADDLE STITCH @ SIDE SEAM
- A8** STRADDLE STITCH @ SLEEVE CUFFS
- A9** 1/4" DN TS @ BOTTOM HEM - TURNBACK HEM WITH COVERLOCK

4_Stitching Details-1

Measured Size: M

POINT OF MEASURE	HOW TO MEASURE	CRITICAL	TYPE	TOLERANCE	EXPECTED	1ST PROTO - RCVD	VARIANCE	ADJUST BY +/-	REVISED SPEC	MEASUREMENT NOTES
Front Body Length	HPS to bottom edge	true	Full	1/4 in	26 in	26 in	0 in	0 in	26 in	
Back Body Length	CB neck seam to bottom edge	true	Full	1/4 in	25 in	25 1/2 in	1/2 in	1/4 in	25 1/4 in	Follow Revised
Shoulder Slope	Shoulder point perpendicular to HPS	false	Full	1/4 in	2 1/2 in	2 5/8 in	1/8 in	0 in	2 1/2 in	
CF Zipper Length	From neck to bottom edge	false	Full	1/4 in	7 1/2 in	7 in	-1/2 in	0 in	7 1/2 in	Back to Spec
Front Neck Drop	HPS to neck seam	false	Full	1/8 in	3 7/8 in	3 7/8 in	0 in	0 in	3 7/8 in	
Back Neck Drop	HPS to neck seam	false	Full	1/8 in	3/4 in	3/4 in	0 in	0 in	3/4 in	
Back Neck Width	Seam to seam at back neck, at HPS point	false	Full	1/4 in	6 3/4 in	7 1/4 in	1/2 in	1/2 in	7 1/4 in	Keep As Sample
Neck Width at Top @ Top Edge		false	Full	1/8 in	8 3/8 in	8 1/4 in	-1/8 in	0 in	8 3/8 in	
Collar Height at CB	Neck seam to collar edge at CB	false	Full	1/8 in	2 3/4 in	2 3/4 in	0 in	0 in	2 3/4 in	
Across Shoulder	Edge to edge	false	Half	1/4 in	22 1/2 in	23 in	1/2 in	0 in	22 1/2 in	Back to Spec
Across Front/Across Back Position from HPS		true	Full	0 in	7 in	7 in	0 in	0 in	7 in	
Across Front	Down from HPS, Seam to seam	false	Half	1/4 in	20 1/2 in	21 in	1/2 in	0 in	20 1/2 in	Back to Spec
Across Back	Down from HPS, Seam to Seam	false	Half	1/4 in	21 in	21 in	0 in	0 in	21 in	
Chest Width	1" Below armhole- edge to edge	true	Half	1/4 in	22 1/2 in	23 in	1/2 in	0 in	22 1/2 in	Back to Spec
Bottom Opening Width- At Edge	At bottom edge	true	Half	1/4 in	22 1/2 in	22 1/2 in	0 in	0 in	22 1/2 in	
Bottom Hem Height	Bottom edge to top of trim	false	Full	1/8 in	1 in	7/8 in	-1/8 in	0 in	1 in	
Sleeve Length from CB Neck	3-point measure from CB Neck to shoulder point to sleeve edge	true	Full	1/2 in	34 1/2 in	34 3/4 in	1/4 in	0 in	34 1/2 in	
Armhole Drop	Below HPS - measure perpendicular	false	Full	1/4 in	13 in	13 in	0 in	0 in	13 in	
Bicep Width	1" below armhole- edge to edge	false	Half	1/4 in	10 in	10 1/8 in	1/8 in	0 in	10 in	
Forearm Width	9" up from sleeve cuff edge	false	Half	1/4 in	7 1/4 in	7 1/4 in	0 in	0 in	7 1/4 in	
Sleeve Opening Width- At Seam	Width at Seam	false	Half	1/4 in	4 1/2 in	4 1/2 in	0 in	0 in	4 1/2 in	
Sleeve Opening Width- At Edge	At edge	false	Half	1/4 in	3 3/4 in	3 3/4 in	0 in	0 in	3 3/4 in	
Sleeve Cuff Height	Cuff edge to seam	false	Full	1/8 in	2 1/4 in	2 1/4 in	0 in	0 in	2 1/4 in	
On-seam Pocket Opening Length	Along opening edge	false	Full	1/4 in	6 1/4 in	6 1/4 in	0 in	0 in	6 1/4 in	
On-Seam Pocket Placement from Bottom Edge		false	Full	1/8 in	4 in	4 in	0 in	0 in	4 in	
Pocket Bag Height	Top edge to bottom edge of pocket bag inside	false	Full	1/8 in	10 in	9 3/4 in	-1/4 in	0 in	10 in	Back to Spec
Pocket Bag Width		false	Full	1/8 in	7 1/2 in	7 3/4 in	1/4 in	0 in	7 1/2 in	Back to Spec
Side Slit Height	From bottom edge to top of slit	false	Full	1/8 in	2 in	2 in	0 in	0 in	2 in	
Sideseam Forward Placement		false	Full	1/8 in	1/2 in	0 in	0 in	0 in	1/2 in	Back to Spec
Loop Label Placement at Sideseam	Bottom edge to bottom of loop label, at the WL side seam	false	Full	1/8 in	6 3/4 in	0 in	0 in	0 in	6 3/4 in	

1st Proto - Anastasiya Zolotova

CREATED ON FEB 18, 2025 11:00 PM
1ST PROTO: SIZE:M, CREATED AT: 02-13-2025

FW25CS004 Collegiate Quarter Zip
FITTING DATE: 2/13/24
MODEL/ATTENDEES: Jessica, Cal, Wes, Megan, Jeni, Anastasiya
STATUS: 1st Proto Approved to 1st Fit

Fit Comments:

- 1. Follow revised back body length of 25 1/4" to level the hem.
- 2. CF zipper length came in -1/2", go back to spec.
- 3. Back neck width came in 7 1/4", please keep as sample.
- 4. Across shoulder came in +1/2", go back to spec.
- 5. Across front came in +1/2", go back to spec.
- 6. Chest came in +1/2", go back to spec.
- 7. Missing the 1/2" side seam forward, please ensure to adjust pattern to reflect.
- 8. Go back to spec on pocket bag width and height. Measurement not including overlock.

Construction/Workmanship:

- 1. Add an additional button on the collar so that the tab can be secured backwards. See image.

- 1. Điều chỉnh lại chiều dài lưng sau thành 25 1/4" để làm đều đường lai.
- 2. Chiều dài dây kéo trước -1/2", điều chỉnh lại theo thông số kỹ thuật.
- 3. Chiều rộng cổ sau là 7 1/4", giữ nguyên như mẫu.
- 4. Ngang vai +1/2", điều chỉnh lại theo thông số kỹ thuật.
- 5. Ngang thân trước +1/2", vui lòng điều chỉnh lại theo thông số kỹ thuật.
- 6. Vòng ngực +1/2", vui lòng điều chỉnh lại theo thông số kỹ thuật.
- 7. Thiếu đường may bên 1/2" về phía trước, vui lòng đảm bảo điều chỉnh.
- 8. Điều chỉnh chiều rộng và chiều cao của túi theo thông số kỹ thuật. Kích thước không bao gồm đường may vắt sổ.

- 1. Thêm một nút bổ sung trên cổ áo để có thể cố định phần đai về phía sau. Vui lòng tham khảo ảnh đính kèm



Screen Shot 2025-02-18 at 5.40.15 PM.jpg

Thêm một nút bổ sung trên cổ áo để có thể cố định phần đai về phía sau. Vui lòng tham khảo ảnh đính kèm

FW25CS004 Collegiate Quarter Zip

Add an additional button on the collar so that the tab can be secured backwards.



Screen Shot 2025-02-19 at 12.13.45 PM.jpg

FW25CS004													
THÔNG SỐ													
No	POINT OF MEASURE	DỊCH	HOW TO MEASURE	DỊCH	CRITICAL	TYPE	TOLERANCE	EXPECTE D	1ST PROTO RCVD	VARIANCE	ADJUST BY +/-	REVISED SPEC	MEASUREMENT NOTES
1	Front Body Length	DÀI ÁO THÂN TRƯỚC	HPS to bottom edge	TỪ ĐỈNH VAI ĐẾN MÉP LẠI	true	Full	1/4 in	26 in	26 in	0 in	0 in	26 in	
2	Back Body Length	DÀI ÁO THÂN SAU	CB neck seam to bottom edge	GIỮA CỔ SAU ĐẾN MÉP LẠI	true	Full	1/4 in	25 in	25 1/2 in	1/2 in	1/4 in	25 1/4 in	Follow Revised
3	Shoulder Slope	XUÔI VAI	Shoulder point perpendicular to HPS	ĐO TỪ NGANG VAI ĐẾN ĐIỂM NGANG ĐẦU VAI	false	Full	1/4 in	2 1/2 in	2 5/8 in	1/8 in	0 in	2 1/2 in	
4	CF Zipper Length	DÀI DÂY KÉO GIỮA TRƯỚC	From neck to bottom edge	TỪ CỔ ĐẾN MÉP	false	Full	1/4 in	7 1/2 in	7 in	-1/2 in	0 in	7 1/2 in	Back to Spec
5	Front Neck Drop	HẠ CỔ TRƯỚC	HPS to neck seam	ĐỈNH VAI ĐẾN ĐƯỜNG MAY	false	Full	1/8 in	3 7/8 in	3 7/8 in	0 in	0 in	3 7/8 in	
6	Back Neck Drop	HẠ CỔ SAU	HPS to neck seam	ĐỈNH VAI ĐẾN ĐƯỜNG MAY	false	Full	1/8 in	3/4 in	3/4 in	0 in	0 in	3/4 in	
7	Back Neck Width	RỘNG CỔ SAU	Seam to seam at back neck, at HPS point	TỪ ĐƯỜNG MAY ĐẾN ĐƯỜNG MAY TẠI CỔ SAU	false	Full	1/4 in	6 3/4 in	7 1/4 in	1/2 in	1/2 in	7 1/4 in	Keep As Sample
8	Neck Width at Top @ Top Edge	RỘNG CỔ TẠI MÉP TRÊN			false	Full	1/8 in	8 3/8 in	8 1/4 in	-1/8 in	0 in	8 3/8 in	
9	Collar Height at CB	CAO LÁ CỔ TẠI GIỮA SAU	Neck seam to collar edge at CB	ĐƯỜNG MAY CỔ ĐẾN MÉP CỔ TẠI GIỮA CỔ SAU	false	Full	1/8 in	2 3/4 in	2 3/4 in	0 in	0 in	2 3/4 in	
10	Across Shoulder	NGANG VAI	Edge to edge	MÉP ĐẾN MÉP	false	Half	1/4 in	22 1/2 in	23 in	1/2 in	0 in	22 1/2 in	Back to Spec
11	Across Front/Across Back Position from HPS	VỊ TRÍ NGANG THÂN TRƯỚC, THÂN SAU TỪ ĐỈNH VAI			true	Full	0 in	7 in	7 in	0 in	0 in	7 in	
12	Across Front	NGANG THÂN TRƯỚC	Down from HPS, Seam to seam	HẠ TỪ ĐỈNH VAI, ĐƯỜNG MAY ĐẾN ĐƯỜNG MAY	false	Half	1/4 in	20 1/2 in	21 in	1/2 in	0 in	20 1/2 in	Back to Spec
13	Across Back	NGANG THÂN SAU	Down from HPS, Seam to Seam	HẠ TỪ ĐỈNH VAI, ĐƯỜNG MAY ĐẾN ĐƯỜNG MAY	false	Half	1/4 in	21 in	21 in	0 in	0 in	21 in	
14	Chest Width	RỘNG NGỰC	1" Below armhole- edge to edge	HẠ 1" DƯỚI NGÃ TỪ NÁCH, ĐO TỪ MÉP ĐẾN MÉP	true	Half	1/4 in	22 1/2 in	23 in	1/2 in	0 in	22 1/2 in	Back to Spec
15	Bottom Opening Width-At Edge	NGANG LẠI ÁO - TẠI ĐƯỜNG MÉP	At bottom edge	TẠI MÉP LẠI	true	Half	1/4 in	22 1/2 in	22 1/2 in	0 in	0 in	22 1/2 in	
16	Bottom Hem Height	TO BÀN LẠI ÁO	Bottom edge to top of trim	MÉP ĐẾN ĐIỀU	false	Full	1/8 in	1 in	7/8 in	-1/8 in	0 in	1 in	
17	Sleeve Length from CB Neck	DÀI TAY TỪ GIỮA CỔ SAU	3-point measure from CB Neck to shoulder point to sleeve edge	ĐO 3 ĐIỂM TỪ GIỮA CỔ SAU ĐẾN ĐIỂM VAI ĐẾN MÉP TAY	true	Full	1/2 in	34 1/2 in	34 3/4 in	1/4 in	0 in	34 1/2 in	
18	Armhole Drop	HẠ NÁCH	Below HPS - measure perpendicular	HẠ TỪ CAO VAI ĐẾN ĐIỂM NGANG NGÃ TỪ NÁCH	false	Full	1/4 in	13 in	13 in	0 in	0 in	13 in	

19	Bicep Width	RỘNG BẮP TAY	1" below armhole- edge to edge	HẠ 1" DƯỚI NGÃ TỪ NÁCH, ĐO TỪ MÉP ĐẾN MÉP	false	Half	1/4 in	10 in	10 1/8 in	1/8 in	0 in	10 in	
20	Forearm Width	RỘNG CĂNG TAY	9" up from sleeve cuff edge	9" TỪ MÉP LAI TAY	false	Half	1/4 in	7 1/4 in	7 1/4 in	0 in	0 in	7 1/4 in	
21	Sleeve Opening Width-At Seam	RỘNG LAI ÁO - TẠI ĐƯỜNG MAY	Width at Seam	RỘNG TẠI ĐƯỜNG MAY	false	Half	1/4 in	4 1/2 in	4 1/2 in	0 in	0 in	4 1/2 in	
22	Sleeve Opening Width-At Edge	RỘNG LAI ÁO - TẠI MÉP	At edge	TẠI MÉP LAI	false	Half	1/4 in	3 3/4 in	3 3/4 in	0 in	0 in	3 3/4 in	
23	Sleeve Cuff Height	TO BÀN LAI TAY	Cuff edge to seam	MÉP ĐẾN ĐƯỜNG MAY	false	Full	1/8 in	2 1/4 in	2 1/4 in	0 in	0 in	2 1/4 in	
24	On-seam Pocket Opening Length	DÀI MIỆNG TÚI TRÊN ĐƯỜNG MAY SƯỜN	Along opening edge	ĐỌC MIỆNG TÚI	false	Full	1/4 in	6 1/4 in	6 1/4 in	0 in	0 in	6 1/4 in	
25	On-Seam Pocket Placement from Bottom Edge	VỊ TRÍ TÚI SƯỜN TỪ MÉP LAI			false	Full	1/8 in	4 in	4 in	0 in	0 in	4 in	
26	Pocket Bag Height	DÀI LÓT TÚI	Top edge to bottom edge of pocket bag inside	MÉP ĐẾN MÉP CỦA LÓT TÚI BÊN TRONG	false	Full	1/8 in	10 in	9 3/4 in	-1/4 in	0 in	10 in	Back to Spec
27	Pocket Bag Width	RỘNG LÓT TÚI			false	Full	1/8 in	7 1/2 in	7 3/4 in	1/4 in	0 in	7 1/2 in	Back to Spec
28	Side Slit Height	CAO XÈ LAI	From bottom edge to top of slit	MÉP LAI ĐẾN ĐỈNH XÈ LAI	false	Full	1/8 in	2 in	2 in	0 in	0 in	2 in	
29	Sideseam Forward Placement	VỊ TRÍ CHÔM ĐƯỜNG MAY SƯỜN			false	Full	1/8 in	1/2 in	0 in	0 in	0 in	1/2 in	Back to Spec
30	Loop Label Placement at Sideseam	VỊ TRÍ NHÃN SƯỜN CỜ SƯỜN NGOÀI	Bottom edge to bottom of loop label, at the WL side seam	MÉP LAI ĐẾN MÉP NHÃN, TẠI SƯỜN TRÁI NGOÀI NGƯỜI MẶC	false	Full	1/8 in	6 3/4 in	0 in	0 in	0 in	6 3/4 in	