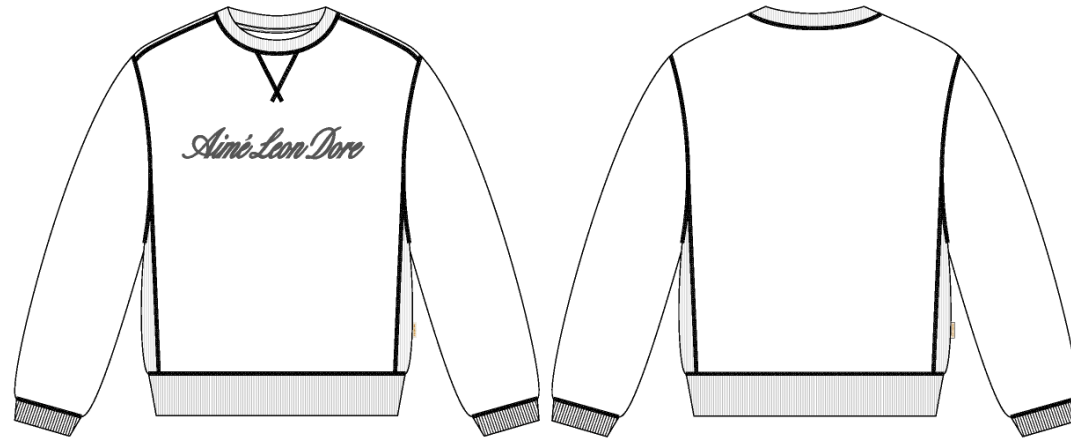


Name	Large Script Crewneck
Style No.	FW25CS007
Division	Mens
Category	Sweatshirts
Season	Fall/Winter
Year	2025
Size Scale	M -Sample size
	<div>XS S M L XL XXL</div>
Style Status	Adopted
Factory	UN-AVAILABLE
Designer Name	Lonz
TD Name	Anastasiya
Created by/Author	2/19/2025 Anastasiya Zolotova anastasiya.zolotova@aimeleonore.com

Large Script Crewneck



1\_B&W-1



PINE GROVE

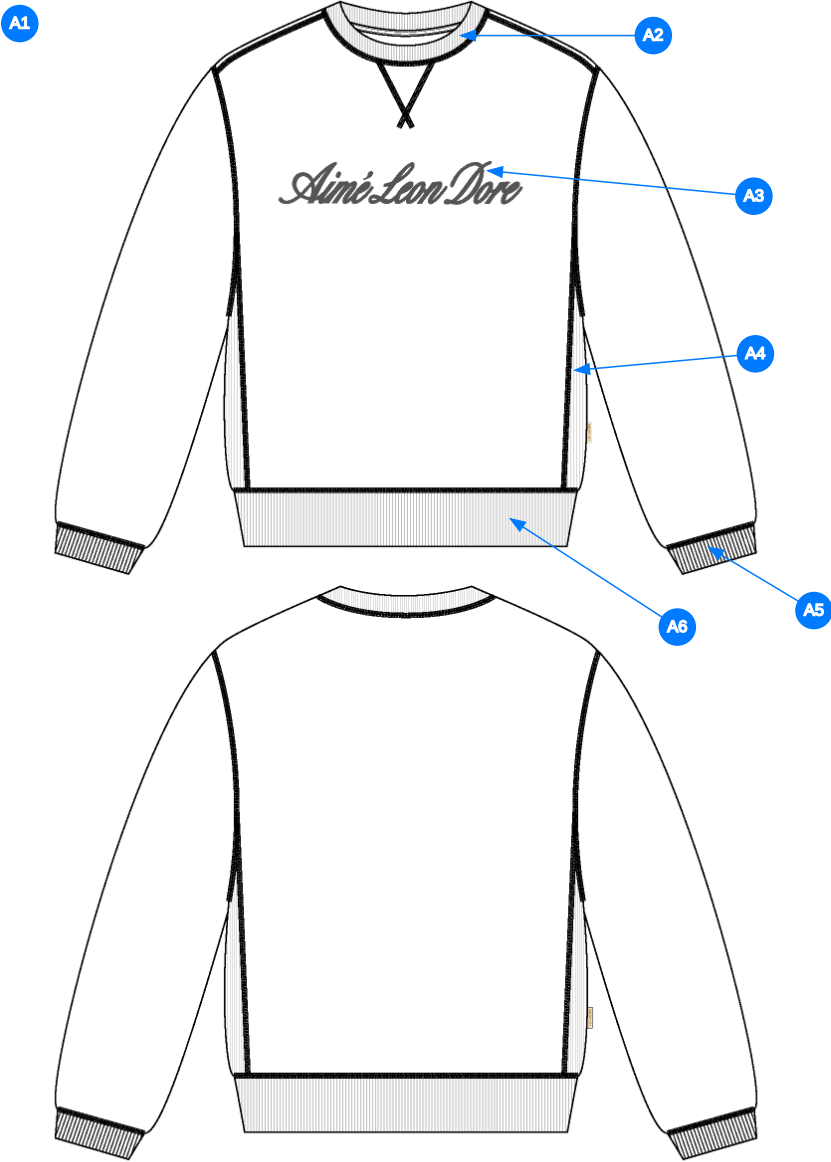


OATMEAL



SKY CAPTAIN

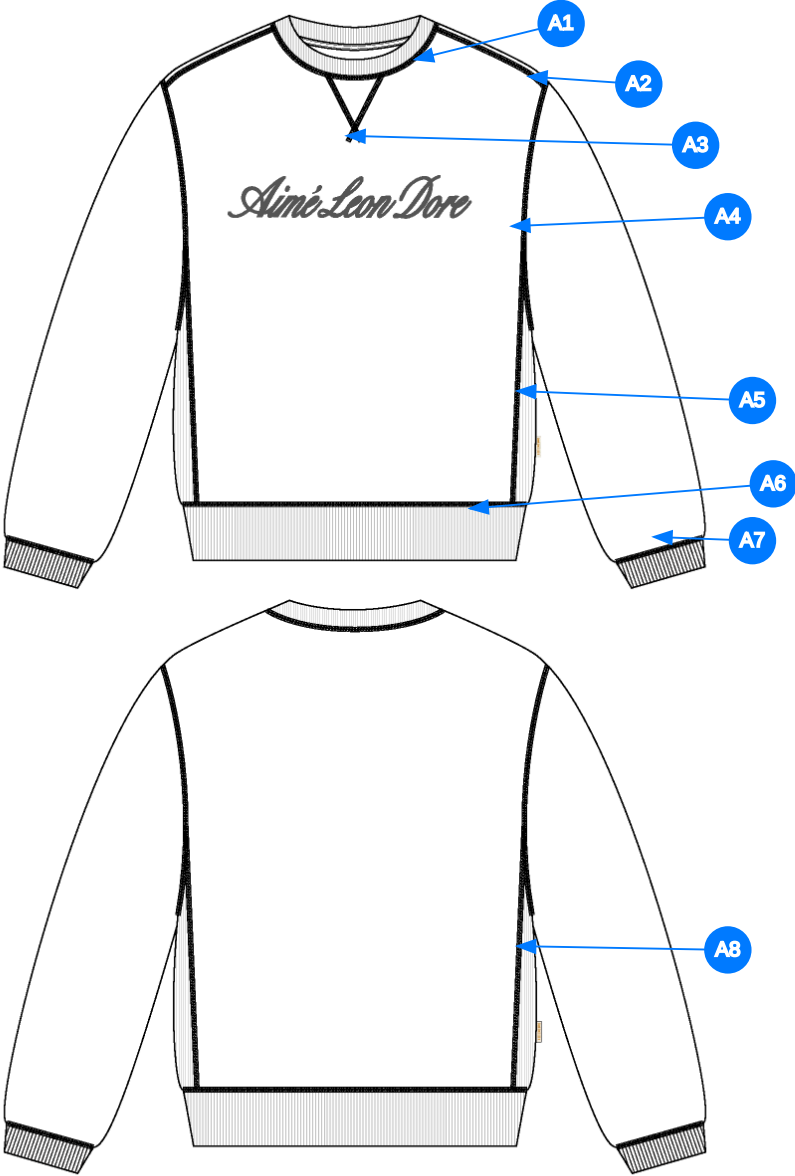
2\_CLR-1



Comments (6)

- A1 FIT: REGULAR CREWNECK
- A2 2X2 RIB DOUBLED @ NECK TRIM
- A3 EMBROIDERED ARTWORK @ CF
- A4 2X2 RIB @ SIDE SEAM - ONE PANEL CONSTRUCTION - DOUBLE THE RIB PANEL
- A5 2X2 RIB DOUBLED @ SLEEVE CUFFS
- A6 2X2 RIB DOUBLED @ BOTTOM HEM

3\_Construction Details-1



Comments (8)

- A1 COVERLOCK STITCH @ NECK
- A2 COVERLOCK STITCH @ SHOULDER
- A3 DECORATIVE COVERLOCK STITCHING @ DORITO
- A4 COVERLOCK STITCH @ ARMHOLE
- A5 COVERLOCK STITCH @ SET IN PANEL
- A6 COVERLOCK STITCH @ BOTTOM HEM
- A7 COVERLOCK STITCH @ SLEEVE CUFFS
- A8 COVERLOCK STITCH @ SET IN PANEL

4\_Stitching Details-1

Measured Size: M

POINT OF MEASURE	HOW TO MEASURE	CRITICAL	TYPE	TOLERANCE	EXPECTED	1ST PROTO - RCVD	VARIANCE	ADJUST BY +/-	REVISED SPEC	MEASUREMENT NOTES
Front Body Length	HPS to bottom edge	true	Full	1/4 in	27 in	27 in	0 in	0 in	27 in	
Back Body Length	CB neck seam to bottom edge	true	Full	1/4 in	25 3/4 in	25 1/2 in	-1/4 in	0 in	25 3/4 in	
Shoulder Seam Forward	HPS to seam	false	Full	1/8 in	1/2 in	3/8 in	-1/8 in	0 in	1/2 in	
Shoulder Slope	Shoulder point perpendicular to HPS	false	Full	1/4 in	1 3/4 in	2 in	1/4 in	0 in	1 3/4 in	
Front Neck Drop	HPS to neck seam	false	Full	1/8 in	4 in	4 1/8 in	1/8 in	0 in	4 in	
Back Neck Drop	HPS to neck seam	false	Full	1/8 in	1 1/4 in	1 3/8 in	1/8 in	0 in	1 1/4 in	
Back Neck Width	Seam to seam at back neck, at HPS point	false	Full	1/4 in	7 3/4 in	7 3/4 in	0 in	0 in	7 3/4 in	
Neck Trim Height	Neck Seam to trim edge	false	Full	1/8 in	13/16 in	13/16 in	0 in	0 in	13/16 in	
Minimum Neck Stretch		true	Half	0 in	11 1/2 in	11 1/2 in	0 in	0 in	11 1/2 in	
Across Shoulder	Seam to seam	false	Half	1/4 in	18 1/2 in	18 1/2 in	0 in	2 in	20 1/2 in	Increase
Across Front/Across Back Position from HPS		true	Full	0 in	0 in	0 in	0 in	7 in	7 in	Add
Across Front	Down from HPS, Seam to seam	false	Half	1/4 in	17 1/4 in	17 in	-1/4 in	1 3/4 in	19 in	Increase
Across Back	Down from HPS, Seam to Seam	false	Half	1/4 in	17 3/4 in	17 1/4 in	-1/2 in	1 3/4 in	19 1/2 in	Increase
Chest Width	1" Below armhole- edge to edge	true	Half	1/4 in	22 3/4 in	22 1/2 in	-1/4 in	0 in	22 3/4 in	
Bottom Opening 2" Above Rib Knit Seam		true	Half	1/4 in	21 in	21 1/2 in	1/2 in	3/4 in	21 3/4 in	Increase
Bottom Opening Width- At Seam	Straight with seam relaxed	true	Half	1/2 in	0 in	0 in	0 in	20 1/4 in	20 1/4 in	Increase
Bottom Opening Width- At Edge	At bottom edge	true	Half	1/4 in	17 in	17 1/2 in	1/2 in	0 in	17 in	Back to Spec
Bottom Hem Height	Bottom edge to stitch line or trim seam	false	Full	1/8 in	2 3/4 in	2 3/4 in	0 in	0 in	2 3/4 in	
Side Panel Body Width - Total	Seam to Seam	true	Full	1/8 in	5 1/2 in	5 3/4 in	1/4 in	0 in	5 1/2 in	Back to Spec
Sleeve Length from CB Neck	3-point measure from CB Neck to shoulder point to sleeve edge	true	Full	1/2 in	35 in	34 3/8 in	-5/8 in	0 in	35 in	Back to Spec
Armhole Drop	Below HPS - measure perpendicular	false	Full	1/4 in	12 1/2 in	12 1/2 in	0 in	0 in	12 1/2 in	
Bicep Width	1" below armhole- edge to edge	false	Half	1/4 in	9 in	9 in	0 in	1/2 in	9 1/2 in	Increase
Forearm Width	9" up from sleeve cuff edge	false	Half	1/4 in	7 1/8 in	6 3/4 in	-3/8 in	1/8 in	7 1/4 in	Increase
Sleeve Opening Width 1" Above Rib Knit Seam		true	Half	1/4 in	5 3/8 in	5 1/4 in	-1/8 in	0 in	5 3/8 in	
Sleeve Opening Width- At Edge	At edge	false	Half	1/4 in	3 3/4 in	3 3/4 in	0 in	0 in	3 3/4 in	
Sleeve Opening Width- At Seam	Width at Seam	false	Half	1/4 in	0 in	0 in	0 in	4 3/4 in	4 3/4 in	Add
Sleeve Cuff Height	Cuff edge to seam	false	Full	1/8 in	2 3/4 in	2 3/4 in	0 in	0 in	2 3/4 in	
CF Artwork Placement below CF Neckline	From CF Neck Seam to Top Edge of Artwork	false	Full	1/8 in	3 1/2 in	0 in	0 in	0 in	3 1/2 in	
Neck Triangle Width at Seam		false	Full	1/8 in	0 in	2 1/4 in	2 1/4 in	2 1/2 in	2 1/2 in	Increase
Neck Triangle Height		false	Full	1/8 in	0 in	2 1/4 in	2 1/4 in	2 1/4 in	2 1/4 in	Keep As Sample
Loop Label Placement at Sideseam	Bottom edge to bottom of loop label, at the WL side seam	false	Full	1/8 in	7 in	6 3/4 in	-1/4 in	0 in	7 in	Back to Spec

## 1st Proto - Anastasiya Zolotova

CREATED ON FEB 18, 2025 10:26 PM

1ST PROTO: SIZE:M, CREATED AT: 02-10-2025

FW25CS007 Large Script Crewneck

**FITTING DATE:** 2/13/24**MODEL/ATTENDEES:** Jessica, Cal, Wes, Megan, Jeni, Anastasiya**STATUS:** 1st Proto Approved to 1st Fit**Fit Comments:** Please align fit with our block FB13 regular crewneck w/additional side panel.

1. Increase across shoulder to 20 1/2".
2. Increase across front to 19".
3. Increase across back to 19 1/2".
4. Increase bottom opening 2" above knit seam to 21 3/4".
5. Increase bottom opening at seam to 21 3/4".
6. Bottom opening at edge came in +1/2", go back to spec.
7. Side panel width came in +1/4", go back to spec.
8. Sleeve length came in -5/8", go back to spec.
9. Increase bicep to 9 1/2".
10. Increase forearm to 7 1/4".
11. Added sleeve opening at seam.
12. Increase neck triangle width at neck seam to 2 1/2", measured stitch center to stitch center.
13. Keep neck triangle height as sample at 2 1/4".

Comment: vui lòng điều chỉnh fit theo block FB13

1. tăng ngang vai 20 1/2"
2. tăng ngang thân trước 19"
3. tăng ngang thân sau 19 1/2"
4. tăng rộng lại trên đường may bo 2" lên 21 3/4"
5. tăng rộng lại tại đường may 21 3/4"
6. rộng lại tại mép +1/2", điều chỉnh thông số trong dung sai
7. rộng phối sườn 1/4", điều chỉnh thông số trong dung sai
8. dài tay -5/8", điều chỉnh thông số trong dung sai
9. tăng bắp tay 9 1/2"
10. tăng cẳng tay 7 1/4"
11. thêm rộng lại tay tại đường may
12. tăng rộng miếng tam giác tại cổ 2 1/2", đo từ giữa đường điều đến giữa đường điều
13. giữ cao miếng tam giác tại cổ như mẫu 2 1/4"





Screen Shot 2025-02-18 at 4.33.41 PM.jpg



<b>FW25CS007</b>												
<b>Measured Size: M</b>												
POINT OF MEASURE		HOW TO MEASURE		CRITICAL	TYPE	TOLERANCE	EXPECTED M	1ST FIT - RCV	VARIANCE	ADJUST BY +/-	REVISED SPEC	NOTE MEASUREMENT
Front Body Length	DÀI ÁO THÂN TRƯỚC	HPS to bottom edge	TỪ ĐỈNH VAI ĐẾN MÉP LẠI	true	Full	1/4 in	27 in	27 in	0 in	0 in	27 in	
Back Body Length	DÀI ÁO THÂN SAU	CB neck seam to bottom edge	GIỮA CỔ SAU ĐẾN MÉP LẠI	true	Full	1/4 in	25 3/4 in	25 1/2 in	-1/4 in	0 in	25 3/4 in	
Shoulder Seam Forward	CHỖM VAI	HPS to seam	ĐỈNH VAI ĐẾN ĐƯỜNG MAY	false	Full	1/8 in	1/2 in	3/8 in	-1/8 in	0 in	1/2 in	
Shoulder Slope	XUÔI VAI	Shoulder point perpendicular to HPS	ĐỘ TỪ NGANG VAI ĐẾN ĐIỂM NGANG ĐẦU VAI	false	Full	1/4 in	1 3/4 in	2 in	1/4 in	0 in	1 3/4 in	
Front Neck Drop	HẠ CỔ TRƯỚC	HPS to neck seam	TỪ ĐỈNH VAI ĐẾN ĐƯỜNG MAY CỔ	false	Full	1/8 in	4 in	4 1/8 in	1/8 in	0 in	4 in	
Back Neck Drop	HẠ CỔ SAU	HPS to neck seam	TỪ ĐỈNH VAI ĐẾN ĐƯỜNG MAY CỔ	false	Full	1/8 in	1 1/4 in	1 3/8 in	1/8 in	0 in	1 1/4 in	
Back Neck Width	NGANG CỔ SAU	Seam to seam at back neck, at HPS point	TỪ ĐƯỜNG MAY ĐẾN ĐƯỜNG MAY TẠI CỔ SAU	false	Full	1/4 in	7 3/4 in	7 3/4 in	0 in	0 in	7 3/4 in	
Neck Trim Height	TỌ BÀN BƠ CỔ	Neck Seam to trim edge	TỪ ĐƯỜNG TRÁ CỔ ĐẾN MÉP BƠ	false	Full	1/8 in	13/16 in	13/16 in	0 in	0 in	13/16 in	
Minimum Neck Stretch	RỘNG CỔ ĐO CĂNG TỐI THIỂU			true	Half	0 in	11 1/2 in	11 1/2 in	0 in	0 in	11 1/2 in	
Across Shoulder	NGANG VAI	Seam to seam	TỪ ĐƯỜNG MAY ĐẾN ĐƯỜNG MAY	false	Half	1/4 in	18 1/2 in	18 1/2 in	0 in	2 in	20 1/2 in	Increase
Across Front/Across Back Position from HPS	NGANG THÂN TRƯỚC/NGANG THÂN SAU VỊ TRÍ DƯỚI ĐỈNH			true	Full	0 in	0 in	0 in	0 in	7 in	7 in	Add
Across Front	NGANG NGỰC	Down from HPS, Seam to seam	HẠ 7" TỪ CAO VAI, ĐỘ TỪ ĐƯỜNG MAY ĐẾN ĐƯỜNG MAY	false	Half	1/4 in	17 1/4 in	17 in	-1/4 in	1 3/4 in	19 in	Increase
Across Back	NGANG LUNG	Down from HPS, Seam to Seam	HẠ 7" TỪ CAO VAI, ĐỘ TỪ ĐƯỜNG MAY ĐẾN ĐƯỜNG MAY	false	Half	1/4 in	17 3/4 in	17 1/4 in	-1/2 in	1 3/4 in	19 1/2 in	Increase
Chest Width	RỘNG NGỰC	1" Below armhole- edge to edge	HẠ 1" DƯỚI NGÀ TỪ NÁCH, ĐỘ TỪ MÉP ĐẾN MÉP	true	Half	1/4 in	22 3/4 in	22 1/2 in	-1/4 in	0 in	22 3/4 in	
Bottom Opening 2" Above Rib Knit Seam	NGANG LẠI ÁO - 2" TRÊN ĐƯỜNG MAY RIB			true	Half	1/4 in	21 in	21 1/2 in	1/2 in	3/4 in	21 3/4 in	Increase
Bottom Opening Width- At Seam	LẠI ÁO ĐO TẠI ĐƯỜNG MAY	Straight with seam relaxed	ĐỘ THẲNG VỚI ĐƯỜNG MAY ĐỂ ỀM	true	Half	1/2 in	0 in	0 in	0 in	20 1/4 in	20 1/4 in	Increase
Bottom Opening Width- At Edge	LẠI ÁO ĐO MÉP DƯỚI	At bottom edge	TẠI MÉP LẠI	true	Half	1/4 in	17 in	17 1/2 in	1/2 in	0 in	17 in	Back to Spec
Bottom Hem Height	TỌ BÀN LẠI ÁO	Bottom edge to stitch line or trim seam	TỪ MÉP ĐẾN ĐƯỜNG ĐIỀU	false	Full	1/8 in	2 3/4 in	2 3/4 in	0 in	0 in	2 3/4 in	
Side Panel Body Width- Total	RỘNG CHÈN SƯỜN	Seam to Seam	TỪ ĐƯỜNG MAY ĐẾN ĐƯỜNG MAY	true	Full	1/8 in	5 1/2 in	5 3/4 in	1/4 in	0 in	5 1/2 in	Back to Spec
Sleeve Length from CB Neck	DÀI TAY TỪ GIỮA CỔ SAU	3-point measure from CB Neck to shoulder point to sleeve edge	ĐỘ 3 ĐIỂM TỪ GIỮA CỔ SAU ĐẾN ĐIỂM VAI ĐẾN MÉP TAY	true	Full	1/2 in	35 in	34 3/8 in	-5/8 in	0 in	35 in	Back to Spec
Armhole Drop	HẠ NÁCH	Below HPS - measure perpendicular	HẠ TỪ ĐỈNH VAI ĐẾN ĐIỂM NGANG NGÀ TỪ NÁCH	false	Full	1/4 in	12 1/2 in	12 1/2 in	0 in	0 in	12 1/2 in	
Bicep Width	NGANG BẮP TAY	1" below armhole- edge to edge	HẠ 1" DƯỚI NGÀ TỪ NÁCH, ĐỘ TỪ MÉP ĐẾN	false	Half	1/4 in	9 in	9 in	0 in	1/2 in	9 1/2 in	Increase

Forearm Width	CÀNG TAY	9" up from sleeve cuff edge	9" TỪ MÉP LẠI TAY	false	Half	1/4 in	7 1/8 in	6 3/4 in	-3/8 in	1/8 in	7 1/4 in	Increase
Sleeve Opening Width 1" Above Rib Knit Seam	CỬA TAY : 1" LÊN TỪ ĐƯỜNG MAY RIB			true	Half	1/4 in	5 3/8 in	5 1/4 in	-1/8 in	0 in	5 3/8 in	
Sleeve Opening Width-At Edge	CỬA TAY - TẠI MÉP	At edge	TẠI MÉP LẠI	false	Half	1/4 in	3 3/4 in	3 3/4 in	0 in	0 in	3 3/4 in	
Sleeve Opening Width-At Seam	CỬA TAY - TẠI ĐƯỜNG MAY	Width at Seam	MÉP LẠI ĐẾN ĐƯỜNG MAY	false	Half	1/4 in	0 in	0 in	0 in	4 3/4 in	4 3/4 in	Add
Sleeve Cuff Height	TỜ BÀN LẠI TAY	Cuff edge to seam	MÉP ĐẾN ĐƯỜNG MAY	false	Full	1/8 in	2 3/4 in	2 3/4 in	0 in	0 in	2 3/4 in	
CF Artwork Placement below CF Neckline	HÌNH IN TẠI GIỮA TRƯỚC DƯỚI ĐƯỜNG MAY CỔ	From CF Neck Seam to Top Edge of Artwork	TỪ GIỮA CỔ TRƯỚC ĐẾN ĐỈNH HÌNH IN	false	Full	1/8 in	3 1/2 in	0 in	0 in	0 in	3 1/2 in	
Neck Triangle Width at Seam	RỘNG MIẾNG TAM GIÁC CỔ TẠI ĐƯỜNG MAY			false	Full	1/8 in	0 in	2 1/4 in	2 1/4 in	2 1/2 in	2 1/2 in	Increase
Neck Triangle Height	CẠO MIẾNG TAM GIÁC CỔ			false	Full	1/8 in	0 in	2 1/4 in	2 1/4 in	2 1/4 in	2 1/4 in	Keep As Sample
Loop Label Placement at Sideseam	VỊ TRÍ NHÃN CỜ	Bottom edge to bottom of loop label, at the WL side seam	TẠI SUỐN TRÁI NGƯỜI MẮC - TỪ MÉP LẠI ĐẾN CẠNH DƯỚI NHÃN SUỐN	false	Full	1/8 in	7 in	6 3/4 in	-1/4 in	0 in	7 in	Back to Spec