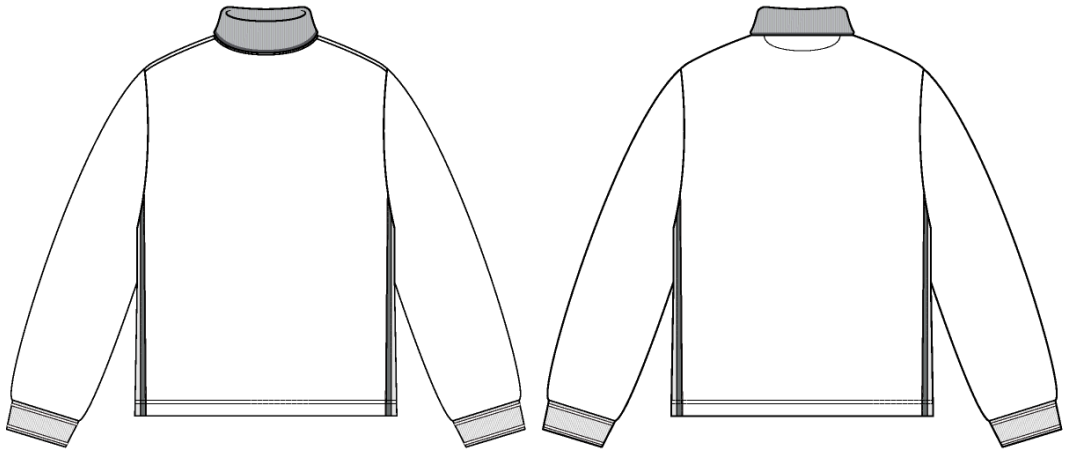


Jersey Turtleneck

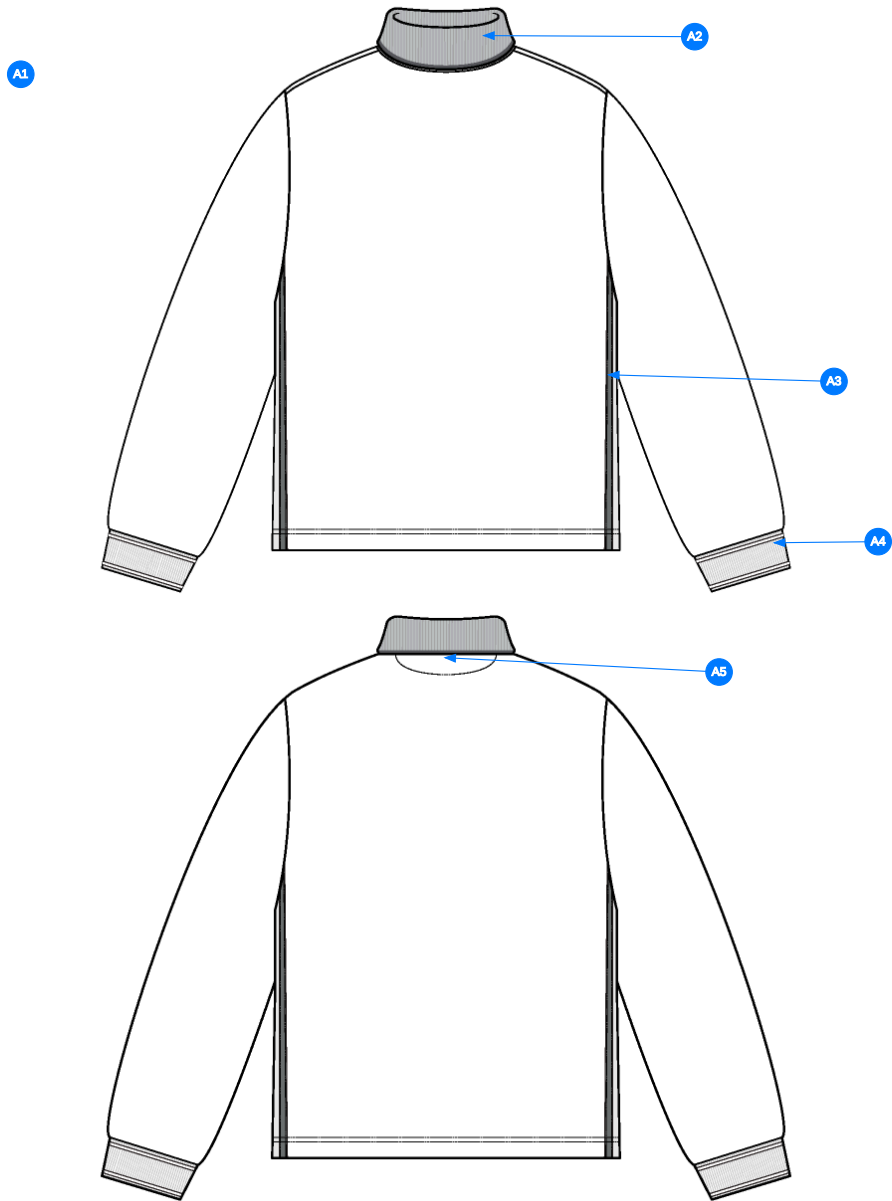
Name	Jersey Turtleneck
Style No.	FW25CT020
Division	Mens
Category	Tees
Season	Fall/Winter
Year	2025
Size Scale	<div>M</div> -Sample size <div><div>XS</div><div>S</div><div>M</div><div>L</div><div>XL</div><div>XXL</div></div>
Style Status	Adopted
Factory	UN-AVAILABLE
Designer Name	Lonz
TD Name	Anastasiya
Created by/Author	2/19/2025 Anastasiya Zolotova anastasiya.zolotova@aimeleondore.com



1_B&W-1



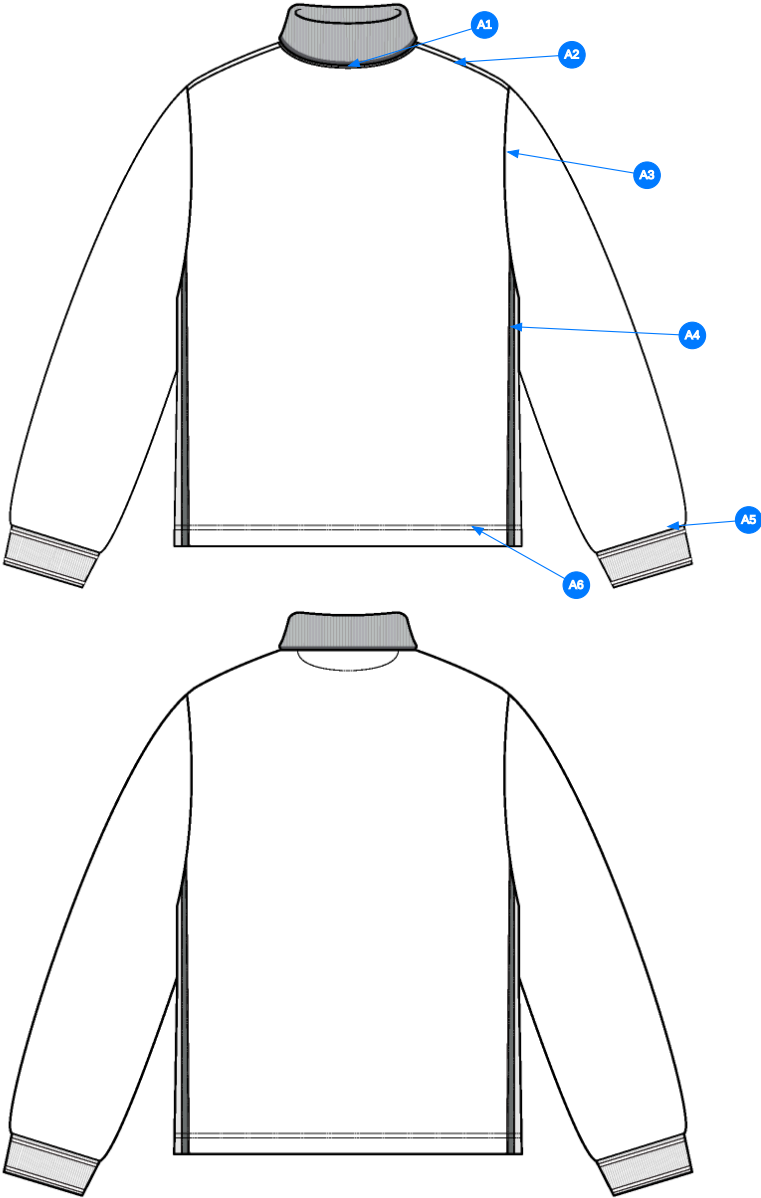
2_CLR 02-1



Comments (5)

- A1** FIT:NB RAINIER JERSEY TURTLENECK (NB22CT003)
- A2** 1X1 RIB W/ FOLDOVER @ NECK
- A3** SELF PANELS @ SIDE SEAM - SEE FOLLOWING PAGES FOR DETAILS
- A4** 1X1 RIB W/ OTTOMAN STITCH @ SLEEVE CUFFS - SEE FOLLOWING PAGES FOR DETAIL
- A5** SELF FABRIC HALF MOON @ CB NECK

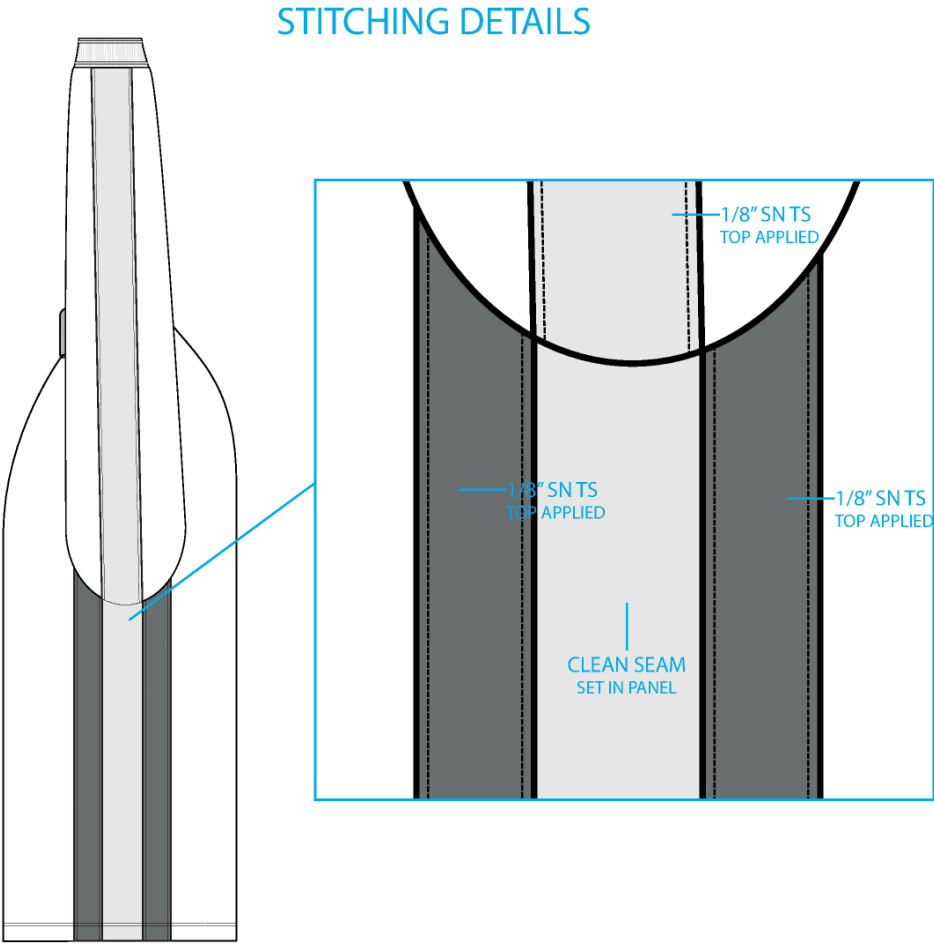
3_Construction Details-1



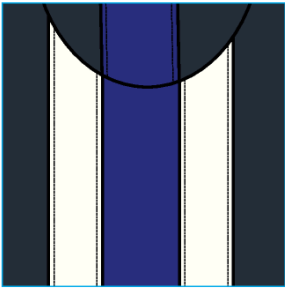
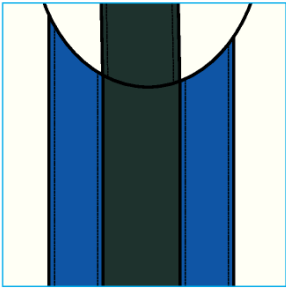
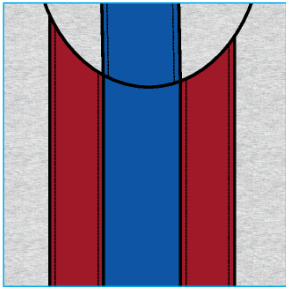
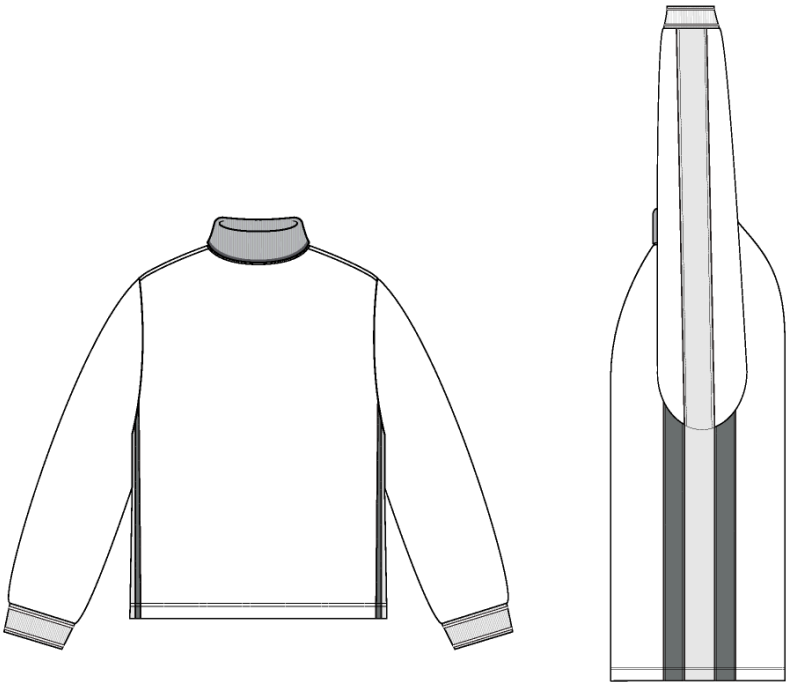
Comments (6)

- A1 CLEAN SEAM FINISH @ NECK
- A2 CLEAN SEAM FINISH @ SHOULDER SEAM
- A3 CLEAN SEAM FINISH @ ARMHOLE
- A4 SEE FOLLOWING PAGES FOR STITCH DETAILS
- A5 CLEAN SEAM FINISH @ SLEEVE CUFFS
- A6 1/4" DN TS @ BOTTOM HEM - TURNBACK FINISH

4_Stitching Details-1



Panel Stitch Details-1



5_Side View-1

Measured Size: M

POINT OF MEASURE	HOW TO MEASURE	CRITICAL	TYPE	TOLERANCE	EXPECTED	1ST PROTO - RCVD	VARIANCE	ADJUST BY +/-	REVISED SPEC	MEASUREMENT NOTES
Front Body Length	HPS to bottom edge	true	Full	1/4 in	28 in	27 3/4 in	-1/4 in	0 in	28 in	
Back Body Length	CB neck seam to bottom edge	true	Full	1/4 in	27 1/4 in	27 in	-1/4 in	0 in	27 1/4 in	
Shoulder Seam Forward	HPS to seam	false	Full	1/8 in	1/2 in	3/8 in	-1/8 in	0 in	1/2 in	
Shoulder Slope	Shoulder point perpendicular to HPS	false	Full	1/4 in	2 1/4 in	2 1/4 in	0 in	0 in	2 1/4 in	
Front Neck Drop	HPS to neck seam	false	Full	1/8 in	3 1/2 in	3 1/2 in	0 in	0 in	3 1/2 in	
Back Neck Drop	HPS to neck seam	false	Full	1/8 in	3/4 in	3/4 in	0 in	0 in	3/4 in	
Back Neck Width	Seam to seam at back neck, at HPS point	false	Full	1/4 in	7 1/4 in	7 1/4 in	0 in	0 in	7 1/4 in	
Neck Width at Top of Rib		false	Full	1/8 in	7 3/4 in	7 3/4 in	0 in	0 in	7 3/4 in	
Neck Trim Height	Neck Seam to trim edge (before folded)	false	Full	1/8 in	5 in	4 3/4 in	-1/4 in	0 in	5 in	Back to Spec
Across Shoulder	Seam to seam	false	Half	1/4 in	18 1/2 in	17 1/2 in	-1 in	-1 in	17 1/2 in	Keep As Sample
Across Front	7" dwn from HPS, Seam to seam	false	Half	1/4 in	16 1/2 in	15 1/2 in	-1 in	-1 in	15 1/2 in	Keep As Saple
Across Back	7" dwn from HPS, Seam to Seam	false	Half	1/4 in	17 in	15 3/4 in	-1 1/4 in	-1 1/4 in	15 3/4 in	Keep As Sample
Chest Width	1" Below armhole- edge to edge	true	Half	1/4 in	21 in	20 in	-1 in	-1 in	20 in	Keep As Sample
Bottom Opening Width- At Edge	At bottom edge	true	Half	1/4 in	21 in	19 1/2 in	-1 1/2 in	-1 in	20 in	Follow Revised
Bottom Hem Height	Bottom edge to stitch line or trim seam	false	Full	1/8 in	3/4 in	3/4 in	0 in	0 in	3/4 in	
Sleeve Length from CB Neck	3-point measure from CB Neck to shoulder point to sleeve edge	true	Full	1/2 in	34 1/2 in	33 1/2 in	-1 in	-1/2 in	34 in	Follow Revised
Armhole Drop	Below HPS - measure perpendicular	false	Full	1/4 in	11 1/4 in	11 1/4 in	0 in	1/2 in	11 3/4 in	Increase
Bicep Width	1" below armhole- edge to edge	false	Half	1/4 in	8 in	7 1/2 in	-1/2 in	0 in	8 in	Back to Spec
Forearm Width	9" up from sleeve cuff edge	false	Half	1/4 in	6 1/4 in	5 3/4 in	-1/2 in	0 in	6 1/4 in	Back To Spec
Sleeve Opening Width- At Seam	Width at Seam	false	Half	1/4 in	4 3/4 in	4 1/2 in	-1/4 in	0 in	4 3/4 in	
Sleeve Opening Width- At Edge	At edge	false	Half	1/4 in	3 3/4 in	3 1/2 in	-1/4 in	0 in	3 3/4 in	
Sleeve Cuff Height	Cuff edge to seam	false	Full	1/8 in	2 3/4 in	2 1/2 in	-1/4 in	0 in	2 3/4 in	Back to Spec
Half Moon Height at CB		false	Full	1/8 in	0 in	2 3/4 in	2 3/4 in	2 1/2 in	2 1/2 in	Reduce
Half Moon Width at CB	Straight Along Neck Seam	false	Full	1/8 in	0 in	5 1/4 in	5 1/4 in	5 1/4 in	5 1/4 in	Keep As Sample

1st Proto - Anastasiya Zolotova

CREATED ON FEB 18, 2025 10:59 PM

1ST PROTO: SIZE:M, CREATED AT: 02-10-2025

FW25CT020 Jersey Turtleneck

FITTING DATE: 2/13/24**MODEL/ATTENDEES:** Jessica, Cal, Wes, Megan, Jeni, Anastasiya**STATUS:** 1st Proto Approved to 1st Fit**Fit Comments:**

- | | |
|------------------------------------------------------------------------------------------------------------------------------------------------------|-------------------------------------------------------------------------------------------------------|
| 1. Overall this style came in small but the team likes the fit. Please ensure to revise pattern and properly build in shrinkage for the next sample. | |
| 2. Neck trim height came in -1/4", go back to spec. | 1. mẫu proto bị nhỏ nhưng khách thích sự vừa vặn, đảm bảo điều chỉnh lại rập và độ co rút cho mẫu fit |
| 3. Across shoulder came in 17 1/2", keep. | 2. to bản cổ hụt -1/4", điều chỉnh thông số trong dung sai |
| 4. Across front came in 15 1/2", keep. | 3. ngang vai 17 1/2", giữ như mẫu |
| 5. Across back came in 15 3/4", keep. | 4. ngang thân trước 15 1/2", giữ như mẫu |
| 6. Chest came in 20", keep. | 5. ngang thân sau 15 3/4", giữ như mẫu |
| 7. Follow revised bottom opening measurement of 20". | 6. rộng ngực 20", giữ như mẫu |
| 8. Follow revised sleeve length of 34". | 7. thay đổi thông số ngang lai 20" |
| 9. Increase armhole drop to 11 1/2". | 8. thay đổi thông số dài tay 34" |
| 10. Bicep came in -1/2", go back to spec. | 9. tăng hạ nách 11 1/2" |
| 11. Forearm came in -1/2", go back to spec. | 10. bắp tay hụt -1/2", điều chỉnh thông số trong dung sai |
| 12. Sleeve cuff height came in -1/4", go back to spec. | 11. căng tay hụt -1/2", điều chỉnh thông số trong dung sai |
| 13. Half moon height came in 2 3/4", reduce to 2 1/2". | 12. to bản lai tay hụt -1/4", điều chỉnh thông số trong dung sai |
| 14. Half moon width came in 5 1/4", keep as sample. | 13. cao bán nguyệt cổ sau 2 3/4", giảm 2 1/2" |
| | 14. rộng bán nguyệt cổ sau 5 1/4", giữ như mẫu |

Construction/Workmanship:

1. Move CB neck seam to be offset 1 1/2" back from WL HPS.
2. Please improve set in panel workmanship, the stitching is uneven.

cấu trúc:

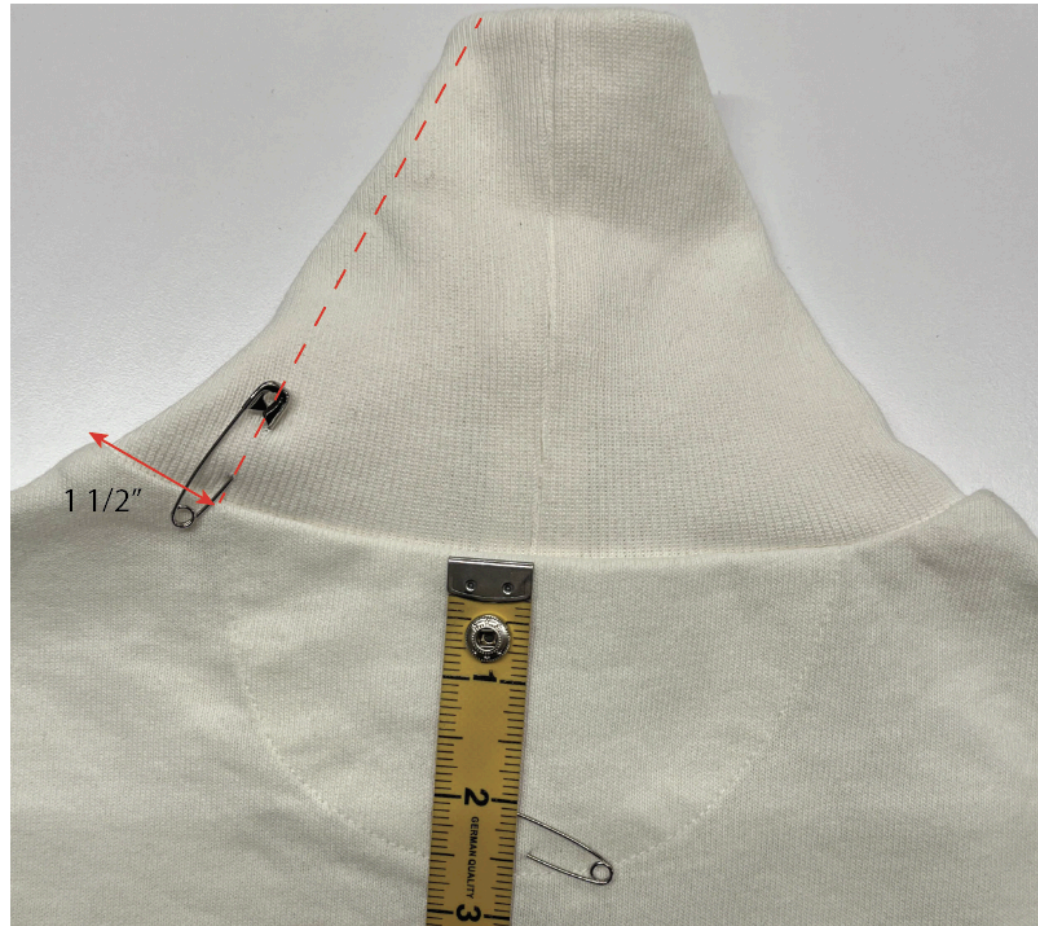
1. dời đường may giữa cổ sau để lệch lại 1 1/2" so với đỉnh vai trái người mặc
2. vui lòng cải thiện lại workmanship tại phối sườn, đường diều không đều



Screen Shot 2025-02-18 at 5.07.17 PM.jpg

dời đường may giữa cổ sau để lệch lại 1 1/2" so với đỉnh vai trái người mặc
FW25CT020 Jersey Turtleneck

Move CB neck seam to be offset 1 1/2" back from WL HPS.

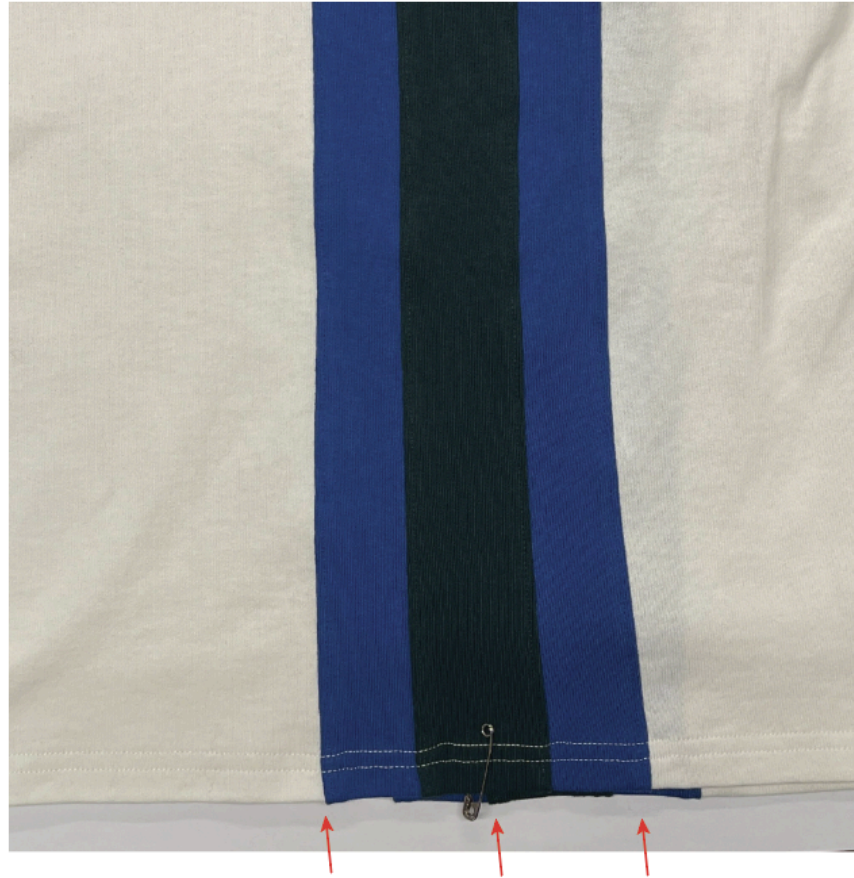


Screen Shot 2025-02-19 at 11.34.07 AM.jpg

vui lòng cải thiện lại workmanship tại phối sườn, đường diễu không đều

FW25CT020 Jersey Turtleneck

Please improve set in panel workmanship, the stitching is uneven.



Screen Shot 2025-02-19 at 11.31.31 AM.jpg

CÁCH MAY PHỐI SƯỜN

