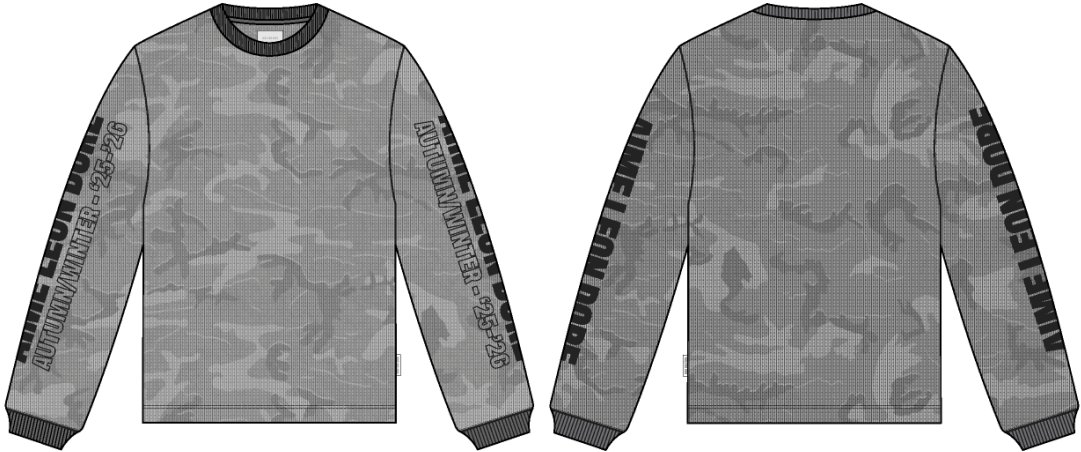


LS Mesh Camo Tee

Name	LS Mesh Camo Tee
Style No.	FW25CT026
Division	Mens
Category	Tees
Season	Fall/Winter
Year	2025
Size Scale	<div>M</div> -Sample size <div><div>XS</div><div>S</div><div>M</div><div>L</div><div>XL</div><div>XXL</div></div>
Style Status	Adopted
Factory	UN-AVAILABLE
Designer Name	Lonz
TD Name	Anastasiya
Created by/Author	2/19/2025 Anastasiya Zolotova anastasiya.zolotova@aimeleondore.com



1_B&W-1



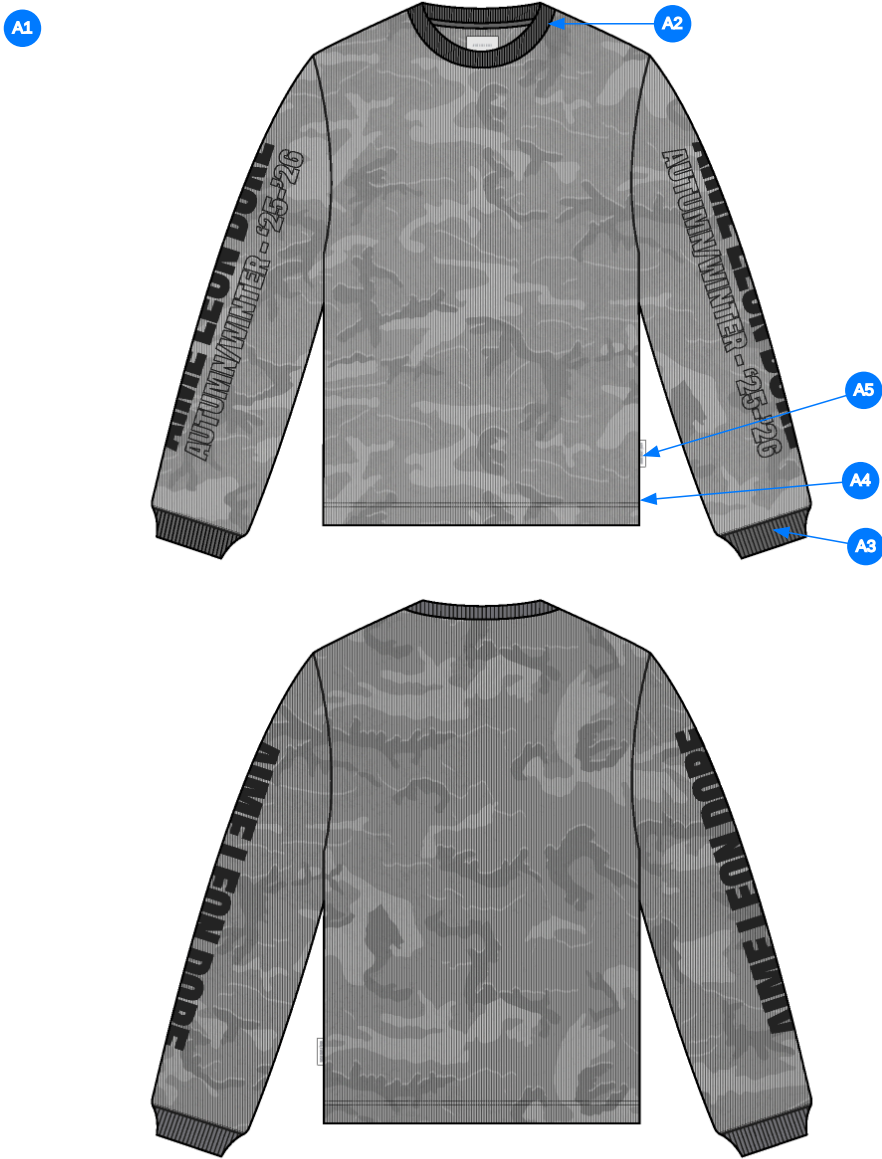
CAMO 1



CAMO 2



2_CLR-1



Comments (5)

- A1** FIT: LS MESH TEE (SS25CT038)
- A2** 1x1 COTTON RIB DOUBLED @ NECK
- A3** 1x1 COTTON RIB DOUBLED @ SLEEVE CUFF
- A4** VENT @ SIDE SEAM - TURN BACK W/ COVERLOCK STITCH
- A5** ALD WOVEN LABEL @ SIDE SEAM

3_Construction Details-1



- Comments (5)
- A1** 1/4" SN TS @ NECK - COVERLOCK STITCH @ INTERIOR NECK
 - A2** CLEAN SEAM FINISH @ SHOULDER
 - A3** CLEAN SEAM FINISH @ ARMHOLE
 - A4** STRADDLE STITCH @ SLEEVE CUFFS
 - A5** 1/4" DN TS @ BOTTOM HEM - TURNBACK W/ COVERLOCK STITCH

4_Stitching Details-1

Measured Size: M

POINT OF MEASURE	HOW TO MEASURE	CRITICAL	TYPE	TOLERANCE	EXPECTED	1ST PROTO - RCVD	VARIANCE	ADJUST BY +/-	REVISED SPEC	MEASUREMENT NOTES
Front Body Length	HPS to bottom edge	true	Full	1/4 in	27 1/2 in	26 1/2 in	-1 in	0 in	27 1/2 in	Back to Spec
Back Body Length	CB neck seam to bottom edge	true	Full	1/4 in	26 3/4 in	25 3/4 in	-1 in	0 in	26 3/4 in	Back to Spec
Front Neck Drop	HPS to neck seam	false	Full	1/8 in	4 1/4 in	3 7/8 in	-3/8 in	0 in	4 1/4 in	Back to Spec
Back Neck Drop	FROM HPS LEVEL STRAIGHT DOWN TO CB NECK SEAM	true	Full	1/8 in	3/4 in	0 in	0 in	0 in	3/4 in	
Back Neck Width	Seam to seam at back neck, at HPS point	false	Full	1/4 in	7 in	7 in	0 in	0 in	7 in	
Neck Trim Height	Neck Seam to trim edge (before folded)	false	Full	1/8 in	3/4 in	5/8 in	-1/8 in	0 in	3/4 in	
Shoulder Seam Forward	HPS to seam	false	Full	1/8 in	1/2 in	1/2 in	0 in	0 in	1/2 in	
Shoulder Slope	Shoulder point perpendicular to HPS	false	Full	1/4 in	2 in	1 7/8 in	-1/8 in	0 in	2 in	
Across Shoulder Width- Seam to seam	Seam to Seam	false	Full	1/4 in	18 in	18 1/4 in	1/4 in	0 in	18 in	
Across Front/Across Back Position from HPS		true	Full	0 in	7 in	7 in	0 in	0 in	7 in	
Across Front	Straight Down from HPS, Seam Center to Seam Center	false	Half	1/4 in	15 3/4 in	16 in	1/4 in	0 in	15 3/4 in	
Across Back	Straight Down from HPS, Seam Center to Seam Center	false	Half	1/4 in	16 1/4 in	16 3/4 in	1/2 in	0 in	16 1/4 in	Back to Spec
Chest Width	1" Below armhole- edge to edge	true	Half	1/4 in	21 1/2 in	21 1/2 in	0 in	0 in	21 1/2 in	
Bottom Opening Width- At Edge	At bottom edge	true	Half	1/4 in	21 in	21 in	0 in	0 in	21 in	
Bottom Hem Height	Bottom edge to stitch line or trim seam	false	Full	1/8 in	1 in	7/8 in	-1/8 in	0 in	1 in	
Sleeve Length from CB Neck	3-point measure from CB Neck to shoulder point to sleeve edge	true	Full	1/2 in	34 in	33 1/4 in	-3/4 in	0 in	34 in	Back to Spec
Armhole Drop	Below HPS - measure perpendicular	false	Full	1/4 in	11 1/2 in	11 in	-1/2 in	0 in	11 1/2 in	Back to Spec
Bicep Width	1" below armhole- edge to edge	false	Half	1/4 in	8 3/4 in	8 3/4 in	0 in	0 in	8 3/4 in	
Forearm Width	9" up from sleeve cuff edge	false	Half	1/4 in	6 1/2 in	6 1/2 in	0 in	-6 1/2 in	0 in	Increase / Fty to Advise
Sleeve Opening Width 1" Above Rib Knit Seam		true	Half	1/4 in	5 1/4 in	5 in	-1/4 in	0 in	5 1/4 in	
Sleeve Opening Width- At Edge	At edge	false	Half	1/4 in	3 3/4 in	4 1/4 in	1/2 in	0 in	3 3/4 in	Back to Spec
Cuff Height	Cuff edge to seam	false	Full	1/8 in	2 in	2 in	0 in	0 in	2 in	
Side Slit Height	From bottom edge to top of slit	false	Full	1/8 in	1 3/8 in	1 3/8 in	0 in	0 in	1 3/8 in	
Sleeve Artwork Placement From Top of Sleeve Cap	To Top Edge of Artwork	false	Full	1/8 in	-	-		-	-	
Sleeve Artwork Centered on Sleeve Fold		true	Full	1/8 in	-	-		-	-	
Loop Label Placement at Sideseam	Bottom edge to bottom of loop label, at the WL side seam	false	Full	1/8 in	7 in	6 1/2 in	-1/2 in	0 in	7 in	Back to Spec

1st Proto - Anastasiya Zolotova

CREATED ON FEB 18, 2025 10:50 PM

1ST PROTO: SIZE:M, CREATED AT: 02-10-2025

FW25CT026 LS Mesh Camo Tee

FITTING DATE: 2/13/24

MODEL/ATTENDEES: Jessica, Cal, Wes, Megan, Jeni, Anastasiya

STATUS: 1st Proto Approved to 1st Fit

Fit Comments:

1. Front body length came in -1", go back to spec.
2. Back body length came in -1", go back to spec.
3. Front neck drop came in -3/8", go back to spec.
4. Across back came in +1/2", go back to spec.
5. Sleeve length came in -3/4", go back to spec.
6. Armhole drop came in -1/2", go back to spec.
7. Increase forearm based on pictured pattern corrections and fty to advise.
8. Sleeve opening at edge came in +1/2", go back to spec.

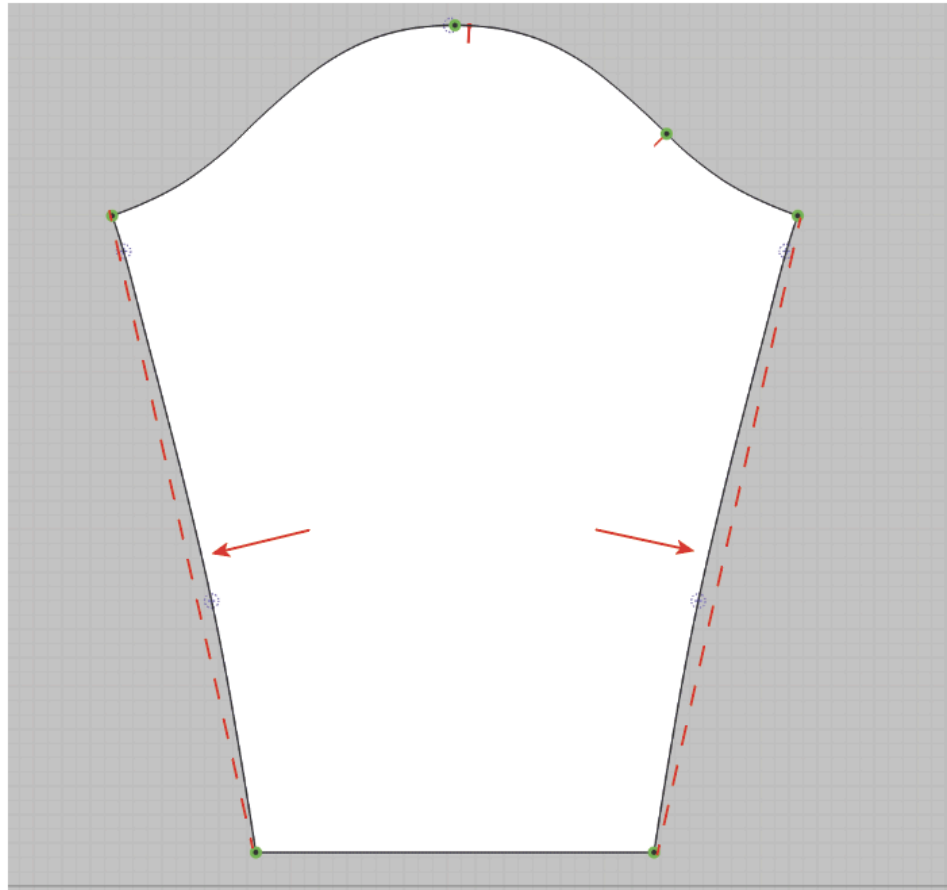
fit comment:

1. dài áo thân trước -1", điều chỉnh thông số trong dung sai
2. dài áo thân sau -1", điều chỉnh thông số trong dung sai
3. hạ cổ trước -3/8", điều chỉnh thông số trong dung sai
4. ngang thân sau -3/8", điều chỉnh thông số trong dung sai
5. dài tay -3/4", điều chỉnh thông số trong dung sai
6. hạ nách -1/2", điều chỉnh thông số trong dung sai
7. tăng cẳng tay dựa theo rập và phòng kỹ thuật advise
8. rộng tay tại mép +1/2, điều chỉnh thông số trong dung sai



Screen Shot 2025-02-18 at 4.30.27 PM.jpg

FW25CT026 LS Mesh Camo Tee
vui lòng làm thẳng đường may tay, phòng kỹ thuật tự cho thông
số cẳng tay sau khi điều chỉnh
Please straighten out the sleeve inseam, fty to advise revised forearm measurement after corrections.



Screen Shot 2025-02-19 at 11.16.36 AM.jpg

FW25CT026	THÔNG SỐ											
Sample Size: M												
POINT OF MEASURE		HOW TO MEASURE		CRITICAL	TYPE	TOLERA NCE	EXPECTED M	PROTO- RCVD	VARIANCE	ADJUST BY +/-	REVISED SPEC	MEASUREMENT NOTES
Front Body Length	DÀI ÁO THÂN TRƯỚC	HPS to bottom edge	TỪ ĐỈNH VAI ĐẾN MÉP LAI	true	Full	1/4 in	27 1/2 in	26 1/2 in	-1 in	0 in	27 1/2 in	Back to Spec
Back Body Length	DÀI ÁO THÂN SAU	CB neck seam to bottom edge	GIỮA CỔ SAU ĐẾN MÉP LAI	true	Full	1/4 in	26 3/4 in	25 3/4 in	-1 in	0 in	26 3/4 in	Back to Spec
Front Neck Drop	HẠ CỔ TRƯỚC	HPS to neck seam	ĐỈNH VAI ĐẾN ĐƯỜNG MAY CỔ	false	Full	1/8 in	4 1/4 in	3 7/8 in	-3/8 in	0 in	4 1/4 in	Back to Spec
Back Neck Drop	HẠ CỔ SAU	FROM HPS LEVEL STRAIGHT DOWN TO CB NECK SEAM	TỪ ĐỈNH VAI HẠ THẲNG ĐẾN ĐƯỜNG MAY GIỮA CỔ SAU	true	Full	1/8 in	3/4 in	0 in	0 in	0 in	3/4 in	
Back Neck Width	RỘNG CỔ SAU	Seam to seam at back neck, at HPS point	ĐM ĐẾN ĐM TẠI CỔ SAU, TẠI ĐIỂM VAI	false	Full	1/4 in	7 in	7 in	0 in	0 in	7 in	
Neck Trim Height	TO BÀN BƠ CỎ	Neck Seam to trim edge (before folded)	TỪ ĐƯỜNG MAY ĐẾN MÉP BƠ (TRƯỚC KHI GẤP BƠ)	false	Full	1/8 in	3/4 in	5/8 in	-1/8 in	0 in	3/4 in	
Shoulder Seam Forward	CHÒM VAI	HPS to seam	ĐỈNH VAI ĐẾN ĐƯỜNG MAY	false	Full	1/8 in	1/2 in	1/2 in	0 in	0 in	1/2 in	
Shoulder Slope	XUÔI VAI	Shoulder point perpendicular to HPS	XUÔI VAI ĐO TỪ NGANG VAI ĐẾN ĐIỂM NGANG ĐỈNH VAI	false	Full	1/4 in	2 in	1 7/8 in	-1/8 in	0 in	2 in	
Across Shoulder Width- Seam to seam	NGANG THÂN TRƯỚC - ĐM ĐẾN ĐM	Seam to Seam	ĐM ĐẾN ĐM	false	Full	1/4 in	18 in	18 1/4 in	1/4 in	0 in	18 in	
Across Front/Across Back Position from HPS	VỊ TRÍ ĐO NGANG NGỰC/ NGANG LƯNG TỪ ĐỈNH VAI			true	Full	0 in	7 in	7 in	0 in	0 in	7 in	
Across Front	NGANG NGỰC	Straight Down from HPS, Seam Center to Seam Center	HẠ THẲNG TỪ CAO VAI, ĐO TỪ ĐƯỜNG MAY ĐẾN ĐƯỜNG MAY	false	Half	1/4 in	15 3/4 in	16 in	1/4 in	0 in	15 3/4 in	
Across Back	NGANG LƯNG	Straight Down from HPS, Seam Center to Seam Center	HẠ THẲNG TỪ CAO VAI, ĐO TỪ ĐƯỜNG MAY ĐẾN ĐƯỜNG MAY	false	Half	1/4 in	16 1/4 in	16 3/4 in	1/2 in	0 in	16 1/4 in	Back to Spec
Chest Width	RỘNG NGỰC	1" Below armhole- edge to edge	HẠ 1" DƯỚI NGÃ TỪ NÁCH, ĐO TỪ MÉP ĐẾN MÉP	true	Half	1/4 in	21 1/2 in	21 1/2 in	0 in	0 in	21 1/2 in	
Bottom Opening Width- At Edge	NGANG LAI - TẠI MÉP	At bottom edge	TẠI MÉP LAI	true	Half	1/4 in	21 in	21 in	0 in	0 in	21 in	
Bottom Hem Height	TO BÀN LAI ÁO	Bottom edge to stitch line or trim seam	TỪ MÉP LAI ĐẾN ĐƯỜNG ĐIỀU	false	Full	1/8 in	1 in	7/8 in	-1/8 in	0 in	1 in	
Sleeve Length from CB Neck	DÀI TAY ÁO TỪ GIỮA CỔ SAU	3-point measure from CB Neck to shoulder point to sleeve edge	3 ĐIỂM - TỪ GIỮA CỔ SAU ĐẾN ĐIỂM VAI ĐẾN MÉP	true	Full	1/2 in	34 in	33 1/4 in	-3/4 in	0 in	34 in	Back to Spec
Armhole Drop	HẠ NÁCH	Below HPS - measure perpendicular	HẠ TỪ CAO VAI ĐẾN ĐIỂM NGANG NGÃ TỪ NÁCH	false	Full	1/4 in	11 1/2 in	11 in	-1/2 in	0 in	11 1/2 in	Back to Spec
Bicep Width	NGANG BẮP TAY	1" below armhole- edge to edge	HẠ 1" DƯỚI NGÃ TỪ NÁCH, ĐO TỪ MÉP ĐẾN MÉP	false	Half	1/4 in	8 3/4 in	8 3/4 in	0 in	0 in	8 3/4 in	
Forearm Width	NGANG KHÚY TAY	9" up from sleeve cuff edge	9" TỪ MÉP CỔ TAY	false	Half	1/4 in	6 1/2 in	6 1/2 in	0 in	-6 1/2 in	0 in	Increase / Fty to Advise
Sleeve Opening Width 1" Above Rib Knit Seam	CỬA TAY - TRÊN ĐƯỜNG TRA RIB 1"			true	Half	1/4 in	5 1/4 in	5 in	-1/4 in	0 in	5 1/4 in	

Sleeve Opening Width- At Edge	CỬA TAY - TẠI MÉP	At edge	TẠI MÉP LẠI	false	Half	1/4 in	3 3/4 in	4 1/4 in	1/2 in	0 in	3 3/4 in	Back to Spec
Cuff Height	TO BÀN LẠI TAY	Cuff edge to seam	TỪ MÉP ĐẾN ĐƯỜNG MAY	false	Full	1/8 in	2 in	2 in	0 in	0 in	2 in	
Side Slit Height	CAO XÈ TÀ	From bottom edge to top of slit	TỪ MÉP LẠI ĐẾN ĐỈNH XÈ LẠI	false	Full	1/8 in	1 3/8 in	1 3/8 in	0 in	0 in	1 3/8 in	
Sleeve Artwork Placement From Top of Sleeve Cap	ĐỊNH VỊ HÌNH IN TẠI TAY TỪ ĐỈNH CỦA ĐẦU TAY	To Top Edge of Artwork	ĐẾN ĐỈNH HÌNH IN	false	Full	1/8 in	-	-		-	-	
Sleeve Artwork Centered on Sleeve Fold	ĐỊNH VỊ HÌNH IN TẠI TAY GIỮA NẾP GẤP TAY			true	Full	1/8 in	-	-		-	-	
Loop Label Placement at Sideseam	VỊ TRÍ NHÃN CỜ TẠI SƯỜN NGOÀI	Bottom edge to bottom of loop label, at the WL side seam	MÉP LẠI ĐẾN MÉP NHÃN, TẠI ĐƯỜNG MAY SƯỜN TRÁI NGƯỜI MẶC	false	Full	1/8 in	7 in	6 1/2 in	-1/2 in	0 in	7 in	Back to Spec