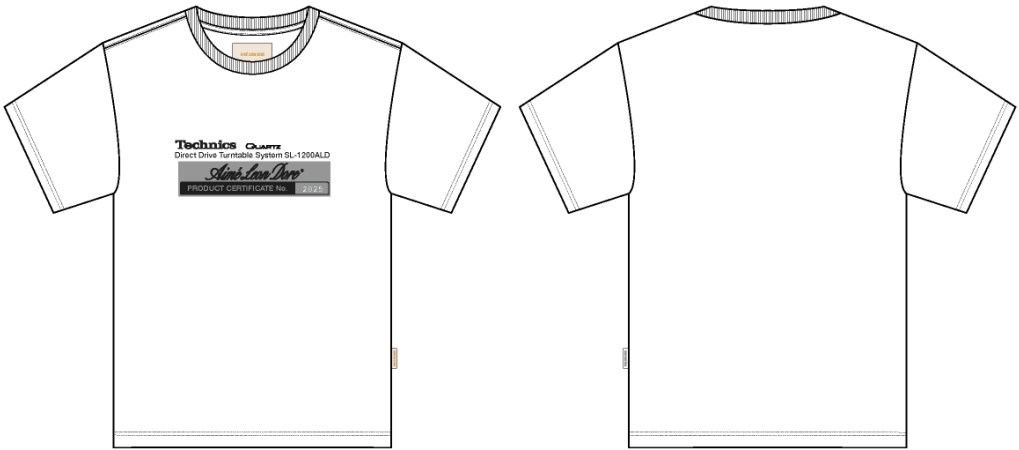
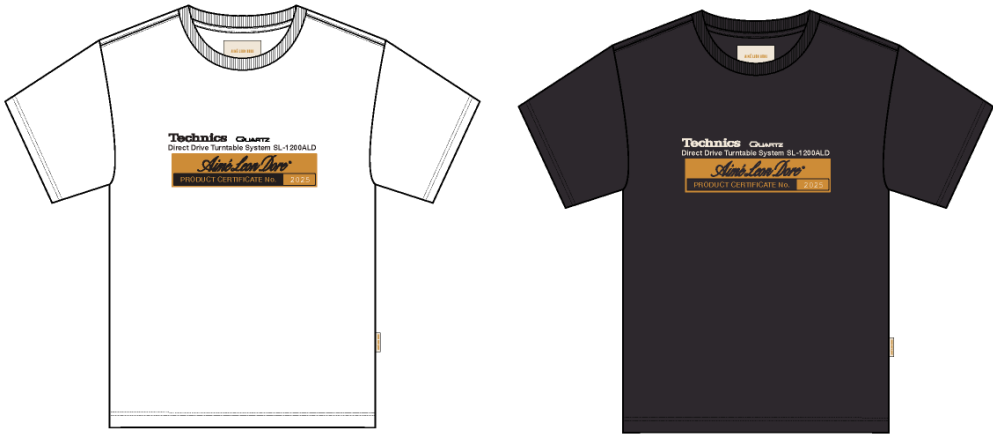


Name	SS Technics Tee
Style No.	FW25CT066
Division	Mens
Category	Tees
Season	Fall/Winter
Year	2025
Size Scale	<div>M</div> -Sample size
	<div>XS</div> <div>S</div> <div>M</div> <div>L</div> <div>XL</div> <div>XXL</div>
Style Status	Development
Factory	UN-AVAILABLE
Designer Name	Wes
TD Name	Anastasiya
Created by/Author	1/10/2025 Jeni Fitzgerald jeni.fitzgerald@aimeleondore.com

SS Technics Tee

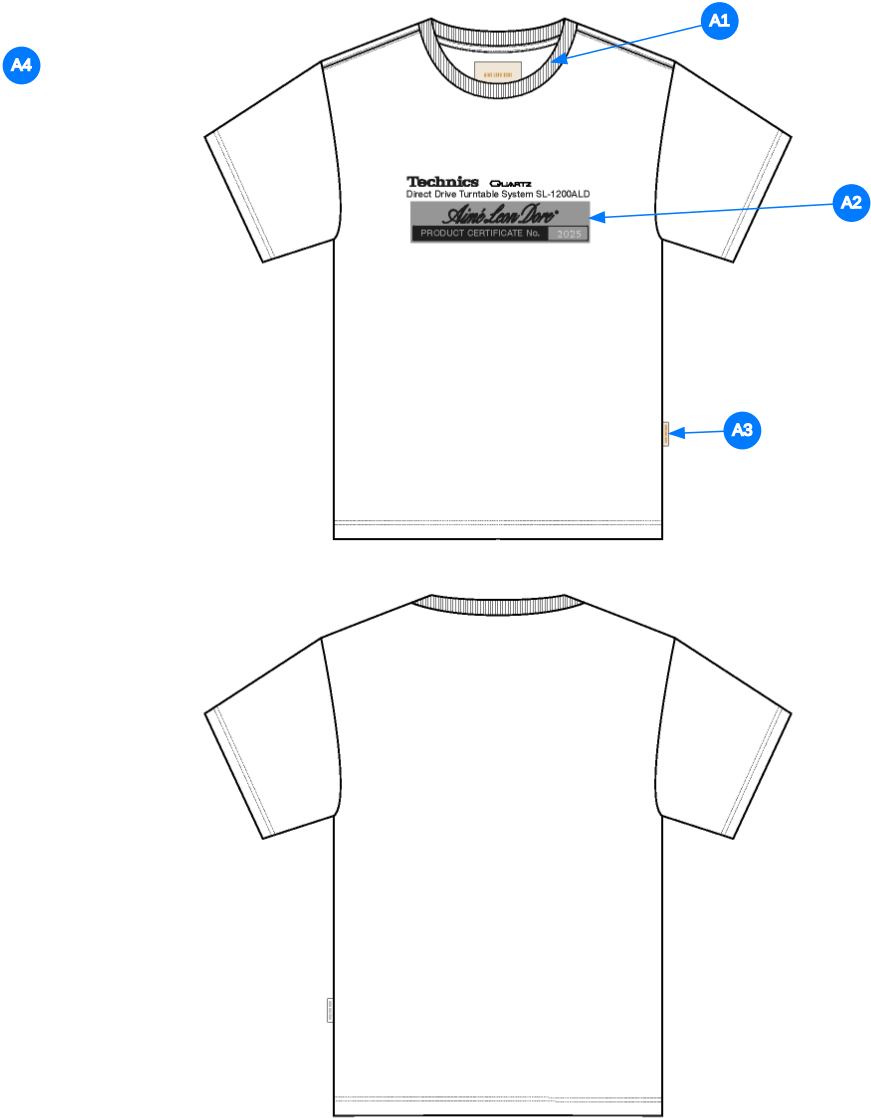


1_B&W-1

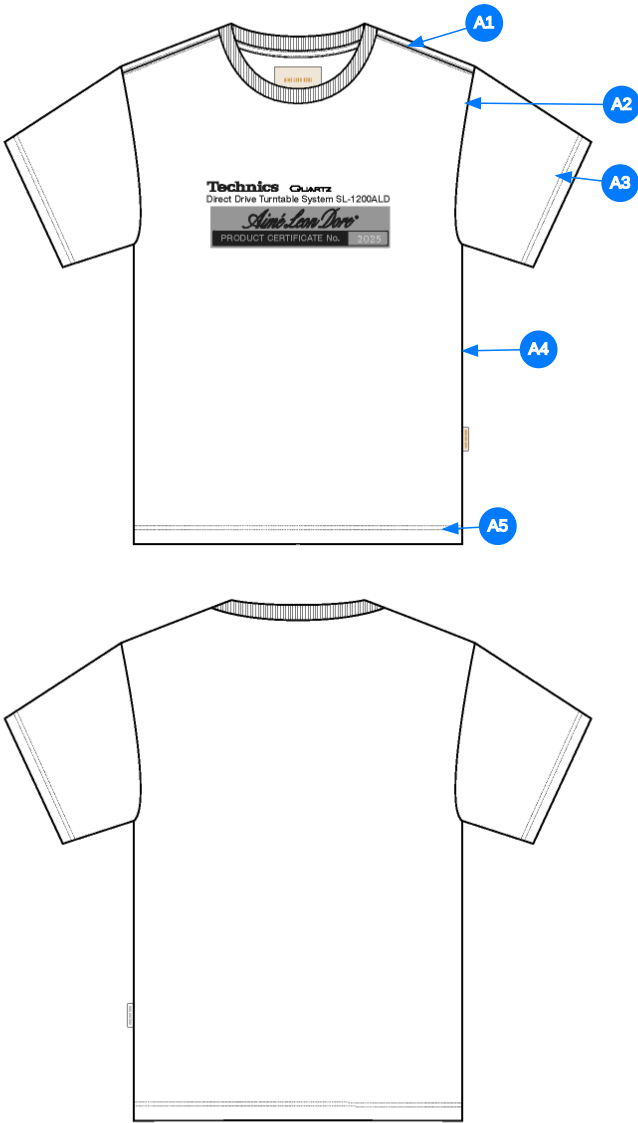


2_CLR-1

- Comments (4)
- A1 1X1 RIB DOUBLED @ COLLAR - JERSEY TAPE ALONG BACK NECK
 - A2 ARTWORK @ WL CHEST - SEE SEPARATE FILE FOR ARTWORK DETAILS
 - A3 ALD LABEL @ SIDE SEAM
 - A4 FIT: REGULAR TEE FIT BLOCK



3_Construction Details-1



Comments (5)

- A1** STRADDLE STITCH @ SHOULDER SEAM
- A2** CLEAN SEAM FINISH @ ARMHOLE
- A3** 1/4" DN TS @ SLEEVE HEM - TURN BACK W/ COVERLOCK STITCH
- A4** CLEAN SEAM FINISH @ SIDE SEAM
- A5** 1/4" DN TS @ BODY HEM - TURN BACK W/ COVERLOCK STITCH

4_Stitching Details-1

Sample Size: M



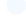

POINT OF MEASURE	CODE	HOW TO MEASURE	CRITICAL	TYPE	TOLERANCE	M
Front Body Length	S&K01	HPS to bottom edge	true	Full	1/4 in	27 1/2 in
Back Body Length	S&K02	CB neck seam to bottom edge	true	Full	1/4 in	26 3/4 in
Shoulder Seam Forward	S&K07	HPS to seam	false	Full	1/8 in	1/2 in
Shoulder Slope	S&K08	Shoulder point perpendicular to HPS	false	Full	1/4 in	2 in
Front Neck Drop	S&K04	HPS to neck seam	false	Full	1/8 in	4 in
Back Neck Drop	S&K05	HPS to neck seam	false	Full	1/8 in	3/4 in
Back Neck Width	S&K06	Seam to seam at back neck, at HPS point	false	Full	1/4 in	7 3/4 in
Neck Trim Height	S&K020	Neck Seam to trim edge	false	Full	1/8 in	13/16 in
Minimum Neck Stretch	S&K199		true	Half	0 in	11 1/2 in
Across Shoulder	S&K09	Seam to seam	false	Half	1/4 in	18 in
Across Front/Across Back Position from HPS	eos7YR		true	Full	0 in	7 in
Across Front	S&K010	7" dwn from HPS, Seam to seam	false	Half	1/4 in	16 1/2 in
Across Back	S&K011	7" dwn from HPS, Seam to Seam	false	Half	1/4 in	16 3/4 in
Chest Width	S&K012	1" Below armhole- edge to edge	true	Half	1/4 in	21 1/2 in
Bottom Opening Width- At Edge	S&K013	At bottom edge	true	Half	1/4 in	21 1/2 in
Bottom Hem Height	S&K014	Bottom edge to stitch line or trim seam	false	Full	1/8 in	3/4 in
Sleeve Length from CB Neck - Short	S&K033	3-point measure from CB Neck to shoulder point to sleeve edge	true	Full	1/4 in	18 1/2 in
Armhole Drop	S&K016	Below HPS - measure perpendicular	false	Full	1/4 in	11 1/4 in
Bicep Width	S&K017	1" below armhole- edge to edge	false	Half	1/4 in	8 in
Sleeve Opening Width- At Edge	S&K73	At edge	false	Half	1/4 in	7 1/4 in
Sleeve Hem Height	S&K118	Hem height	false	Full	1/8 in	3/4 in
CF Artwork Placement below CF Neckline	S&K112	From CF Neck Seam to Top Edge of Artwork	false	Full	1/8 in	3 in
Loop Label Placement at Sideseam	S&K023	Bottom edge to bottom of loop label, at the WL side seam	false	Full	1/8 in	7 in

Development Notes - Anastasiya Zolotova

CREATED ON JAN 10, 2025 9:55 PM

FW25CT066 SS Technics Tee
Date: 1/10/24
Status: Direct to PPS
TD: Anastasiya

Fit: Please follow FB09 “Regular Block” T-Shirt Fit

COMPONENT		QTY	1.  PROTO
FABRIC			
1	TT-SJ30SX2-W120 CODE: UA CORE JERSEY Placement: BODY, CB NECK AH TO AH Supplier: UNAVAILABLE Width: CW: 120CM Weight: 240 GSM Country of Origin: VIETNAM		-  Bright White Custom Code: 11-0601 TCX Price: 0.00
2	TT-RIB20SX2 CODE: UA CORE 1x1 RIB Placement: COLLAR Supplier: UNAVAILABLE		-  Bright White Custom Code: 11-0601 TCX Price: 0.00
3	ARTWORK CODE: AS CORRESPONDING FILE Placement: WL CHEST Notes: FOLLOW ARTWORK AND POM Supplier: Factory Sourced		- ARTWORK Price: 0.00
4	ARTWORK CODE: AS CORRESPONDING FILE Placement: CB Notes: FOLLOW ARTWORK AND POM Supplier: Factory Sourced		- ARTWORK Price: 0.00
LABEL AND TRIM PACKAGE			
5	ALD Woven Loop Label CODE: ALD-ML02 Placement: WL SIDE SEAM Notes: FOLLOW POM Supplier: Colonial	1	-  Parmesan Base / Gold Text Price: 0.00
6	ALD Woven Main Label W/ Size CODE: ALD-ML03 Placement: INTERIOR CENTER BACK NECK Supplier: Colonial Country of Origin: CHINA	1 Piece	- ALD Woven Main Label W/ Size Price: 0.079
Components 6			Total 0.079