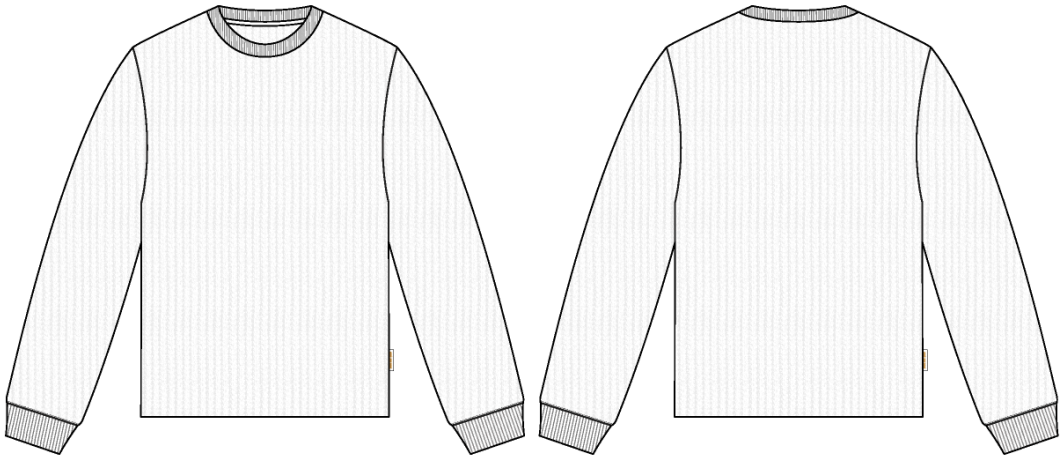
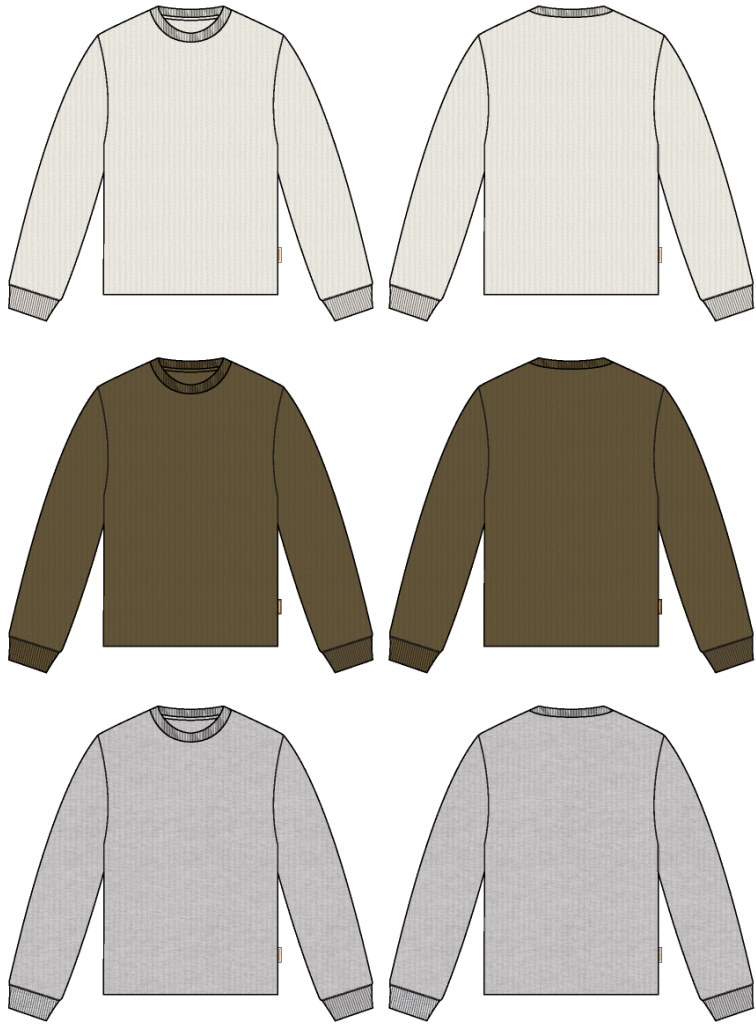


Name	Distressed Waffle Thermal
Style No.	FW25CT073
Division	Mens
Category	Tees
Season	Fall/Winter
Year	2025
Size Scale	<div>M</div> -Sample size
	<div>XS</div> <div>S</div> <div>M</div> <div>L</div> <div>XL</div> <div>XXL</div>
Style Status	Adopted
Factory	UN-AVAILABLE
Designer Name	Wes
TD Name	Anastasiya
Created by/Author	4/1/2025 Anastasiya Zolotova anastasiya.zolotova@aimeleondore.com

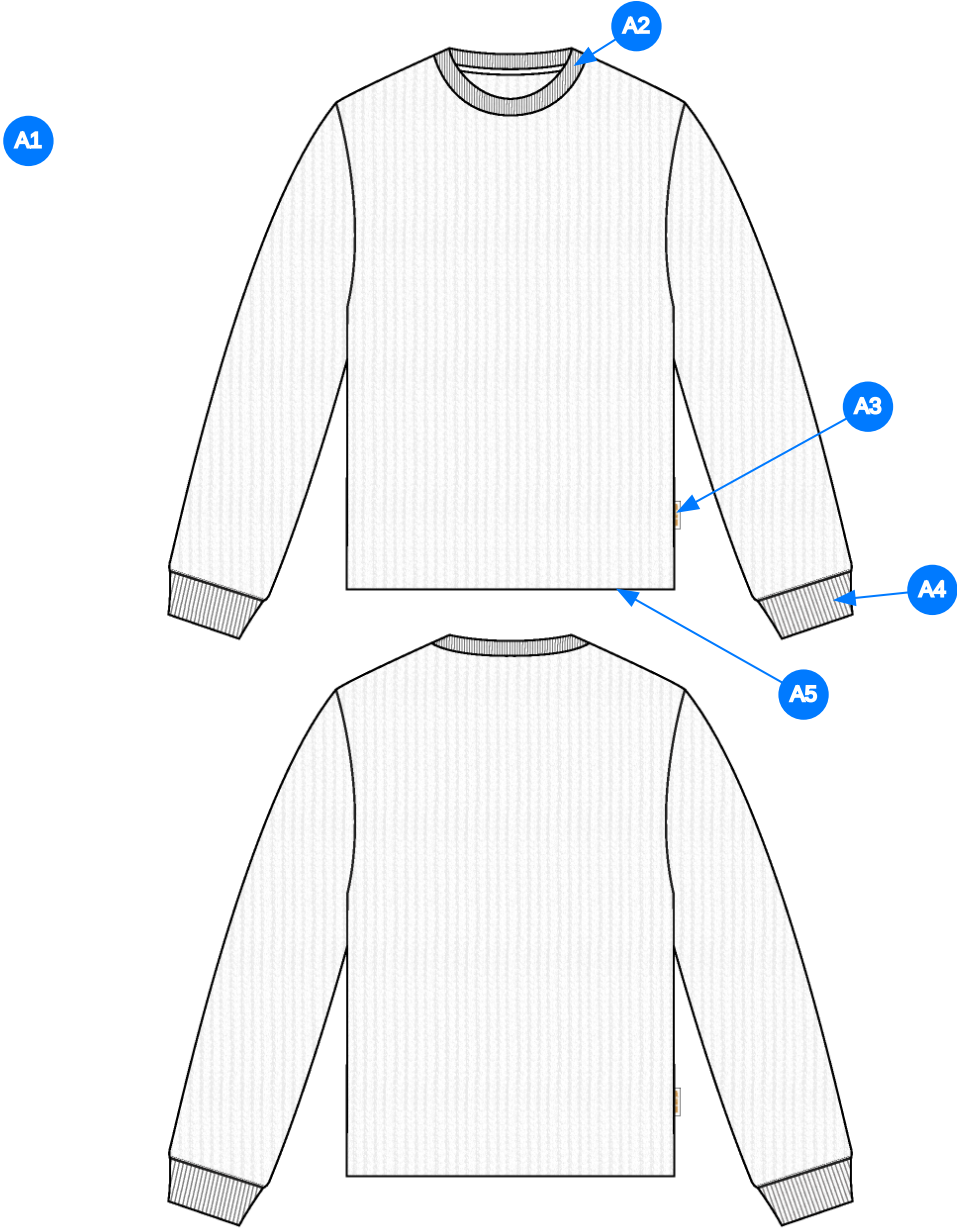
Distressed Waffle Thermal



1_B&W-1



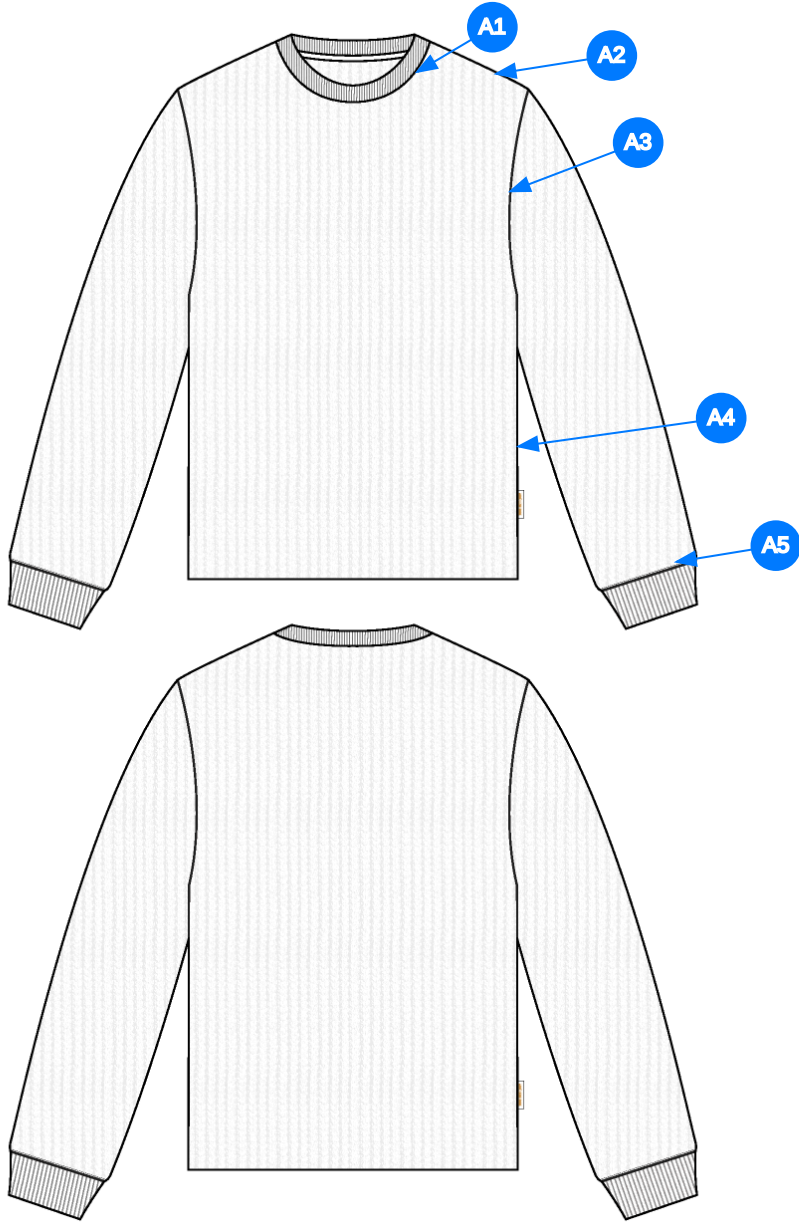
2_CLR-1



Comments (5)

- A1 FIT: LS WAFFLE THERMAL (FW23CT053)
- A2 1X1 RIB @ NECK - 2 LAYERS W/ RAW EDGES; SEE FOLLOWING PAGE FOR CONSTRUCTION REFERENCE
- A3 ALD WOVEN LABEL @ SIDE SEAM
- A4 1X1 RIB @ SLEEVE CUFF - 2 LAYER W/ RAW EDGES; SEE FOLLOWING PAGE FOR CONSTRUCTION REFERENCE
- A5 RAW EDGE @ BOTTOM HEM - PLEASE ENSURE CUTTING IS STRAIGHT

3_Construction Details-1



- Comments (5)
- A1 CLEAN SEAM @ NECK
 - A2 CLEAN SEAM @ SHOULDER
 - A3 CLEAN SEAM @ ARMHOLE
 - A4 CLEAN SEAM @ SIDE SEAM
 - A5 CLEAN SEAM @ CUFF

4_Stitching Details-1

Measured Size: M

POINT OF MEASURE	HOW TO MEASURE	CRITICAL	TYPE	TOLERANCE	EXPECTED	1ST PROTO - RCVD	VARIANCE	ADJUST BY +/-	REVISED SPEC	MEASUREMENT NOTES
Front Body Length	HPS to bottom edge	true	Full	1/4 in	28 1/4 in	28 1/4 in	0 in	0 in	28 1/4 in	
Back Body Length	CB neck seam to bottom edge	true	Full	1/4 in	27 1/4 in	27 1/4 in	0 in	0 in	27 1/4 in	
Shoulder Slope	Shoulder point perpendicular to HPS	false	Full	1/4 in	1 3/4 in	1 3/4 in	0 in	0 in	1 3/4 in	
Shoulder Seam Forward	HPS to seam	false	Full	1/8 in	1/2 in	1/2 in	0 in	0 in	1/2 in	
Front Neck Drop	HPS to neck seam	false	Full	1/8 in	3 1/2 in	3 1/4 in	-1/4 in	0 in	3 1/2 in	Back to Spec
Back Neck Drop	HPS to neck seam	false	Full	1/8 in	1 1/4 in	5/8 in	-5/8 in	0 in	1 1/4 in	Back to Spec
Back Neck Width	Seam to seam at back neck, at HPS point	false	Full	1/4 in	7 1/2 in	7 in	-1/2 in	0 in	7 1/2 in	Back to Spec
Neck Trim Height	Neck Seam to trim edge	false	Full	1/8 in	1 1/4 in	1 1/8 in	-1/8 in	0 in	1 1/4 in	
Across Shoulder	Seam to seam	false	Half	1/4 in	16 3/4 in	16 7/8 in	1/8 in	0 in	16 3/4 in	
Across Front	7" dwn from HPS, Seam to seam	false	Half	1/4 in	14 3/4 in	14 7/8 in	1/8 in	0 in	14 3/4 in	
Across Back	7" dwn from HPS, Seam to Seam	false	Half	1/4 in	15 1/2 in	15 3/4 in	1/4 in	0 in	15 1/2 in	
Chest Width	1" Below armhole- edge to edge	true	Half	1/4 in	19 1/4 in	19 1/4 in	0 in	0 in	19 1/4 in	
Bottom Opening Width- At Edge	At bottom edge	true	Half	1/4 in	19 1/4 in	18 3/4 in	-1/2 in	0 in	19 1/4 in	Back to Spec
Bottom Hem Height	Bottom edge to stitch line or trim seam	false	Full	1/8 in	0 in	0 in	0 in	0 in	0 in	
Sleeve Length from CB Neck	3-point measure from CB Neck to shoulder point to sleeve edge	true	Full	1/2 in	34 1/2 in	34 1/2 in	0 in	0 in	34 1/2 in	
Armhole Drop	Below HPS - measure perpendicular	false	Full	1/4 in	10 3/4 in	10 3/4 in	0 in	1/4 in	11 in	Increase
Sleeve Cap Height		true	Full	1/8 in	0 in	5 3/4 in	5 3/4 in	5 3/4 in	5 3/4 in	Keep As Sample
Bicep Width	1" below armhole- edge to edge	false	Half	1/4 in	7 1/2 in	7 3/8 in	-1/8 in	0 in	7 1/2 in	
Forearm Width	9" up from sleeve cuff edge	false	Half	1/4 in	5 1/2 in	5 1/8 in	-3/8 in	0 in	5 1/2 in	Back to Spec
Sleeve Opening Width- At Seam	Width at Seam	false	Half	1/4 in	4 1/2 in	4 in	-1/2 in	0 in	4 1/2 in	Back to Spec
Sleeve Opening Width- At Edge	At edge	false	Half	1/4 in	3 1/2 in	3 3/8 in	-1/8 in	0 in	3 1/2 in	
Sleeve Cuff Height	Cuff edge to seam	false	Full	1/8 in	3 3/4 in	3 3/4 in	0 in	0 in	3 3/4 in	
Loop Label Placement at Sideseam	Bottom edge to bottom of loop label, at the WL side seam	false	Full	1/8 in	7 in	7 1/8 in	1/8 in	0 in	7 in	

1st Proto - Anastasiya Zolotova

CREATED ON MAR 30, 2025 3:29 AM

1ST PROTO: SIZE:M, CREATED AT: 03-27-2025

FW25CT073 Distressed Waffle Thermal

FITTING DATE: 3/27/25**MODEL/ATTENDEES:** Jessica, Cal, Anthony, Wes, Megan, Jeni, Anastasiya**STATUS:** 1st Proto Requesting 1st Fit**Fit Comments:**

1. Front neck drop came in $-1/4"$, go back to spec.
2. Back neck drop came in $-5/8"$, go back to spec.
3. Back neck width came in $-1/2"$, go back to spec.
4. Bottom opening at edge came in $-1/2"$, go back to spec.
5. Forearm came in $-3/8"$, go back to spec.
6. Sleeve opening at seam came in $-1/2"$, go back to spec.
7. Keep sleeve cap height as sample at $5\ 3/4"$.
8. Increase armhole drop to 11, see image of correction on sample the armhole shape at body is too pointed creating a v-shape. Please scoop out as pictured.

Construction/Workmanship:

1. Please follow internal seam finishing at cuff as reference, please overlock both layers together instead of leaving both layers separate and pressing open seam allowance.
2. Please overlock both layers at neck at seam, see image.
3. Please use lightweight jersey for neck tape, the quality of the self on neck might be causing the neck to become out of tolerance and much smaller than requested.

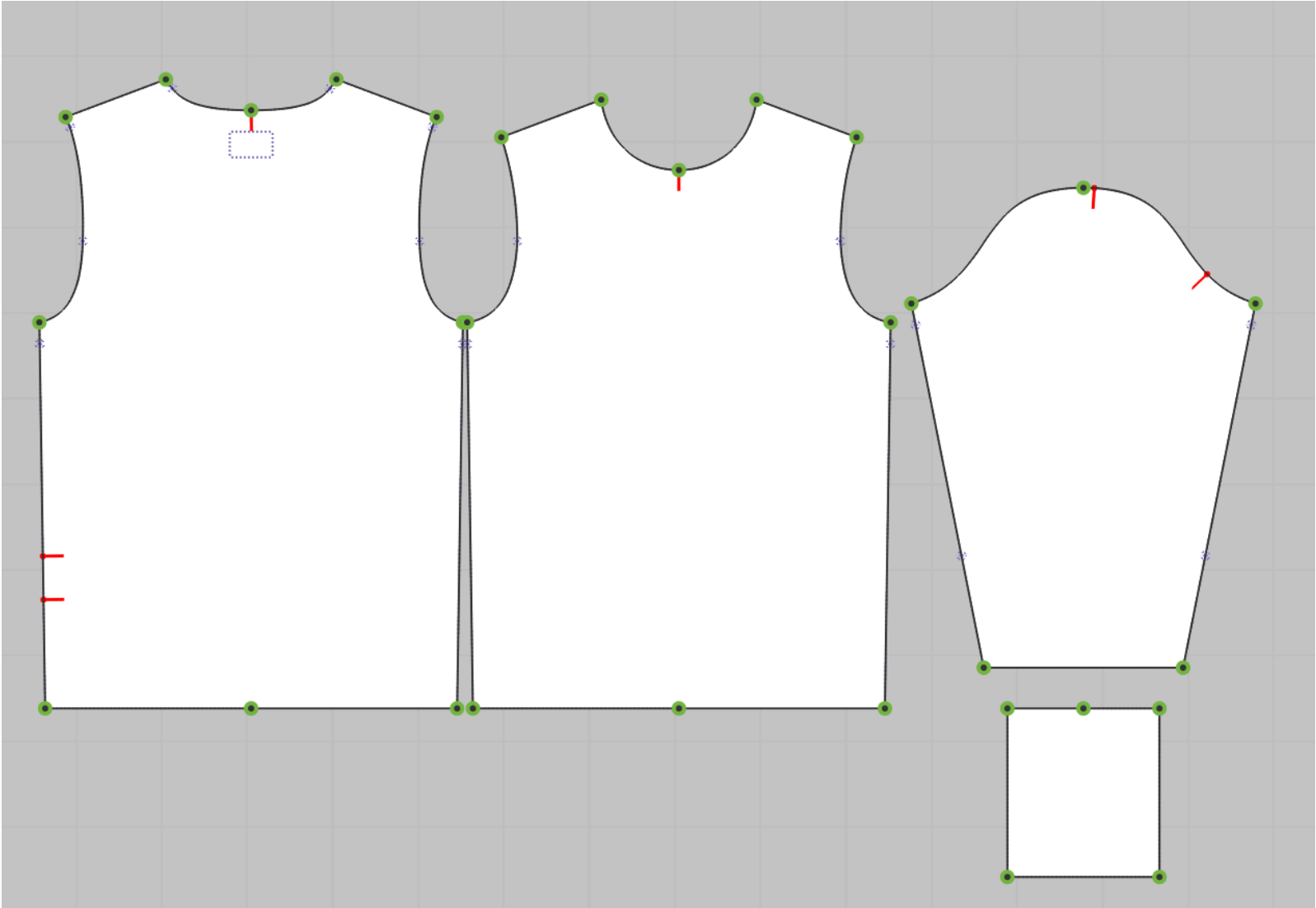
Fit comments:

1. hạ cổ trước hụt $-1/4"$, điều chỉnh thông số trong dung sai
 2. hạ cổ sau hụt $-5/8"$, điều chỉnh thông số trong dung sai
 3. rộng cổ sau hụt $-1/2"$, điều chỉnh thông số trong dung sai
 4. ngang lai áo tại mép hụt $-1/2"$, điều chỉnh thông số trong dung sai
 5. khủy tay hụt $-3/8"$, điều chỉnh thông số trong dung sai
 6. rộng lai tay tại đường may hụt $-1/2"$, điều chỉnh thông số trong dung sai
 7. giữ cao đầu tay như mẫu $5\ 3/4"$
 8. tăng hạ nách 11, xem hình ảnh chỉnh sửa trên mẫu, hình dáng nách tại thân quá nhọn tạo thành hình chữ V, vui lòng điều chỉnh như hình
- Cấu trúc:

1. vui lòng làm theo đường may bên trong ở tay như hình tham khảo, vui lòng vắt sổ cả 2 lớp lại với nhau thay vì để cả hai lớp tách biệt
2. vui lòng vắt sổ cả 2 lớp tại cổ tại đường may, xem hình tham khảo bên dưới
3. vui lòng sử dụng jersey tại viền cổ sau, chất lượng của vải trên cổ có thể khiến cổ trở nên vượt quá dung sai và nhỏ hơn nhiều so với yêu cầu.



Screen Shot 2025-03-28 at 2.44.36 PM.jpg

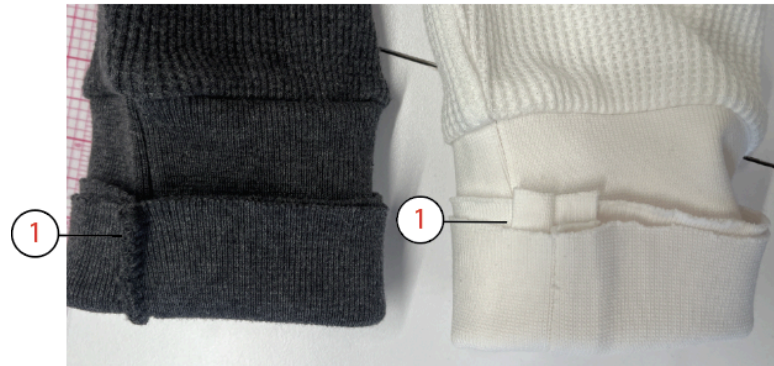


Screen Shot 2025-03-29 at 11.42.09 PM.jpg

1. vui lòng làm theo đường may bên trong ở tay như hình tham khảo, vui lòng vắt sổ cả 2 lớp lại với nhau thay vì để cả hai lớp tách biệt
2. vui lòng vắt sổ cả 2 lớp tại cổ tại đường may, xem hình thm khảo bên dưới
3. vui lòng sử dụng jersey tại viền cổ sau, chất lượng của vải trên cổ có thể khiến cổ trở nên vượt quá dung sai và nhỏ hơn nhiều so với yêu cầu.

FW25CT073 Distressed Waffle Thermal

1. Please follow internal seam finishing at cuff as reference, please overlock both layers together instead of leaving both layers separate and pressing open seam allowance.
2. Please overlock both layers at neck at seam, see image.
3. Please use lightweight jersey for neck tape, the quality of the self on neck might be causing the neck to become out of tolerance and much smaller than requested.

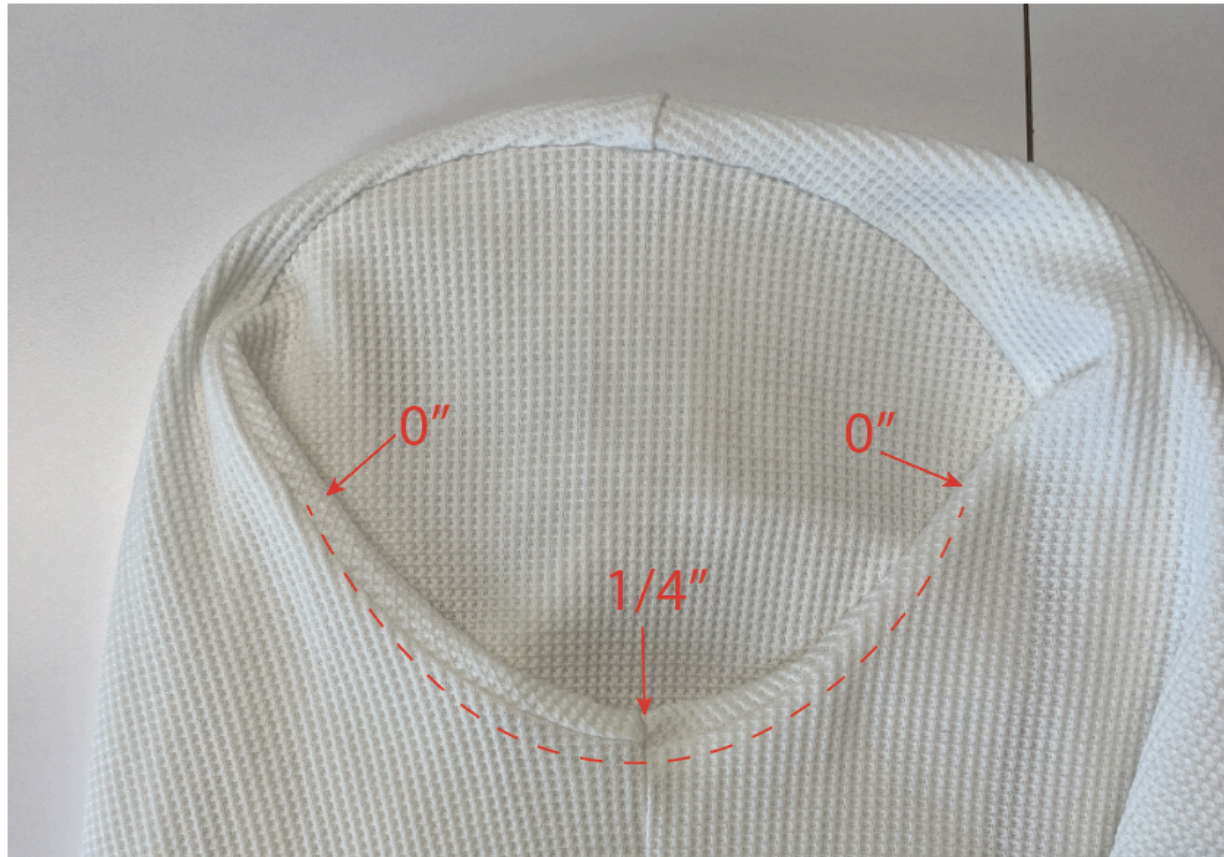


Screen Shot 2025-03-31 at 12.34.03 PM.jpg

tham khảo hình để điều chỉnh hình dáng nách, chỉ điều chỉnh ở thân, giữ nguyên btp tay

FW25CT073 Distressed Waffle Thermal

-Scoop out as follows to create less of a v-shape at armhole, only on body. Keep sleeve pattern as is.



Screen Shot 2025-04-01 at 5.34.31 PM.jpg