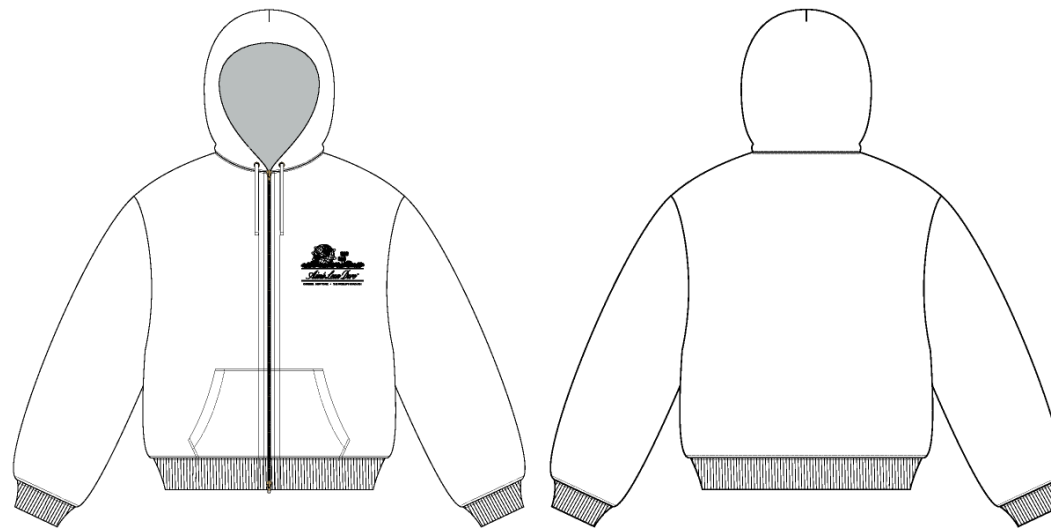


Name	Waffle Lined Hoodie
Style No.	FW25CH001
Division	Mens
Category	Hoodies
Season	Fall/Winter
Year	2025
Size Scale	<div>M -Sample size</div> <div><div>XS</div><div>S</div><div>M</div><div>L</div><div>XL</div><div>XXL</div></div>
Style Status	Adopted
Factory	UN-AVAILABLE
Designer Name	Lonz
TD Name	Anastasiya
Created by/Author	6/6/2025 Anastasiya Zolotova anastasiya.zolotova@aimeleondore.com

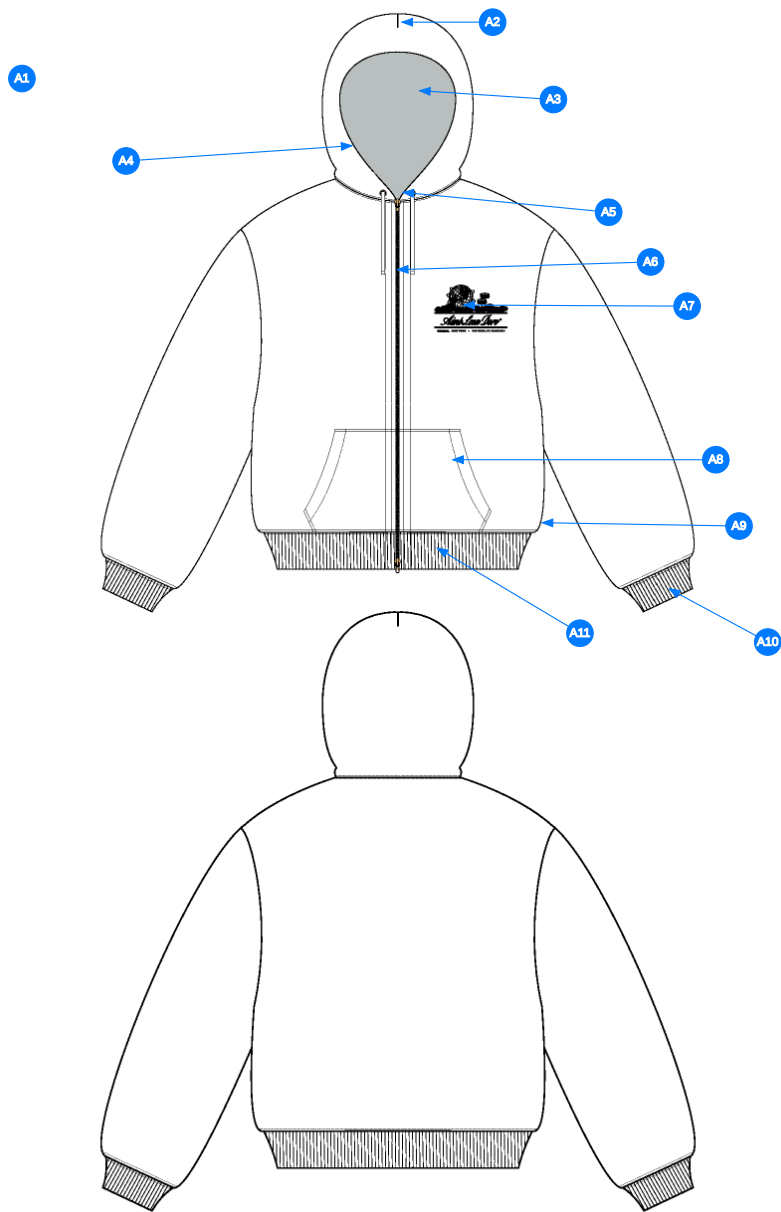
Waffle Lined Hoodie



1\_B&W-1



2\_CLR-1

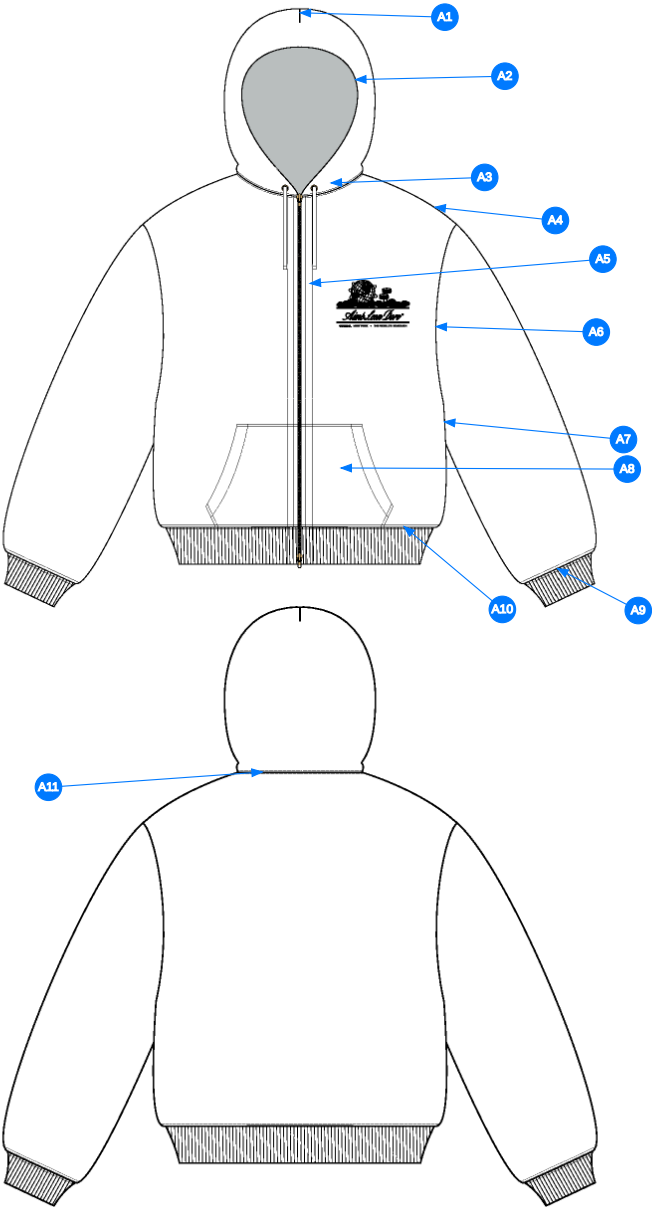


Comments (11)

- A1 FIT: WASHED FULL ZIP HOODIE (SS25CH002)
- A2 DART @ HOOD
- A3 FULLY LINED @ HOOD - HOOD FULLY LINED W/ WAFFLE
- A4 DRAWCORD TUNNEL @ HOOD
- A5 METAL EYELETS W/ DRAWCORDS @ HOOD
- A6 ZIPPER @ CF - KISSING WELT CONSTRUCTION
- A7 ARTWORK @ WL CHEST
- A8 KANGAROO POCKET @ FRONT BODY
- A9 WOVEN LABEL @ SIDE SEAM
- A10 2X2 RIB DOUBLED @ SLEEVE CUFFS
- A11 2X2 RIB DOUBLED @ BOTTOM HEM

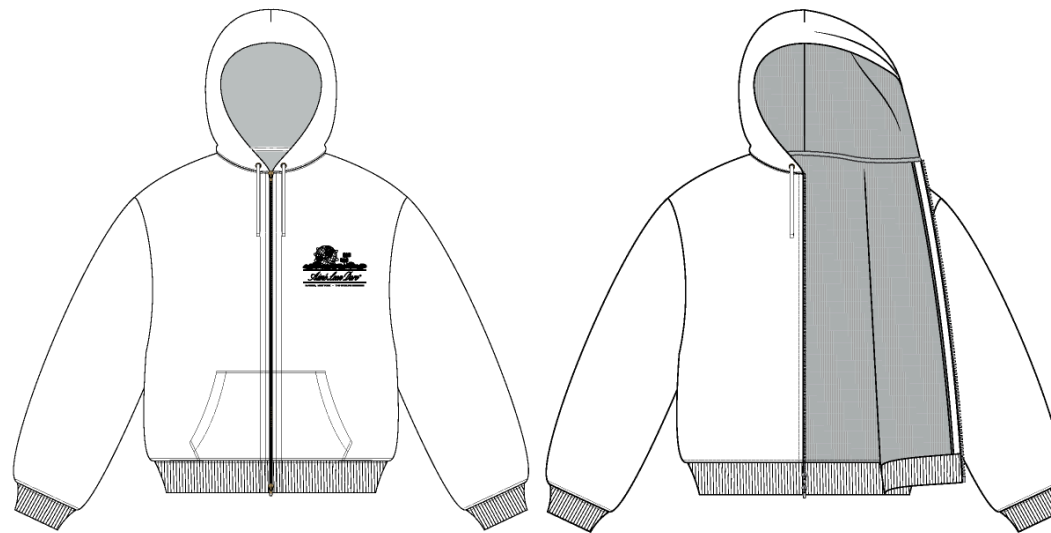
3\_Construction Details-1





- Comments (11)
- A1 DART @ HOOD
  - A2 SNTS DRAWCORD TUNNEL @ HOOD
  - A3 CLEAN SEAM FINISH @ NECK
  - A4 CLEAN SEAM FINISH @ SHOULDER
  - A5 1/4" SNTS @ CF
  - A6 CLEAN SEAM FINISH @ ARMHOLE
  - A7 CLEAN SEAM FINISH @ SIDE SEAM
  - A8 SEE FOLLOWING PAGES FOR STITCHING DETAILS
  - A9 STRADDLE STITCHING @ SLEEVE CUFF
  - A10 STRADDLE STITCHING @ BOTTOM HEM
  - A11 1/4" SINGLE NEEDLE TOP STITCH @ NECK

4\_Stitching Details-1



5\_Construction Details-1

Sample Size: M

POINT OF MEASURE	HOW TO MEASURE	CRITICAL	TYPE	TOLERANCE	XS	S	M	L	XL	XXL
Front Body Length	HPS to bottom edge	true	Full	1/2 in	-7/8 in	-7/8 in	26 3/4 in	7/8 in	7/8 in	7/8 in
Back Body Length	CB neck seam to bottom edge	true	Full	1/2 in	-7/8 in	-7/8 in	26 in	7/8 in	7/8 in	7/8 in
CF Zipper Length	From neck to bottom edge	false	Full	1/4 in	-3/4 in	-3/4 in	23 in	3/4 in	3/4 in	3/4 in
Front Neck Drop	HPS to neck seam	false	Full	1/8 in	-1/8 in	-1/8 in	3 1/2 in	1/8 in	1/8 in	1/8 in
Back Neck Drop	HPS to neck seam	false	Full	1/8 in	0 in	0 in	3/4 in	0 in	0 in	0 in
Back Neck Width	Seam to seam at back neck, at HPS point	false	Full	1/4 in	-1/4 in	-1/4 in	9 in	1/4 in	1/4 in	1/4 in
Shoulder Seam Forward	HPS to seam	false	Full	1/8 in	0 in	0 in	1/2 in	0 in	0 in	0 in
Shoulder Slope	Shoulder point perpendicular to HPS	false	Full	1/4 in	0 in	0 in	2 1/2 in	0 in	0 in	0 in
Across Shoulder	Seam to seam	false	Half	1/4 in	-1 in	-1 in	24 in	1 in	1 1/2 in	1 1/2 in
Across Front/Across Back Position from HPS		true	Full	0 in	-1/4 in	-1/4 in	7 in	1/4 in	1/4 in	1/4 in
Across Front	Straight Down from HPS, Seam to Seam	false	Half	1/4 in	-1 in	-1 in	22 1/2 in	1 in	1 1/2 in	1 1/2 in
Across Back	Straight Down from HPS, Seam to Seam	false	Half	1/4 in	-1 in	-1 in	22 1/2 in	1 in	1 1/2 in	1 1/2 in
Chest Width	1" Below armhole- edge to edge	true	Half	1/4 in	-1 in	-1 in	24 1/2 in	1 in	1 1/2 in	1 1/2 in
Bottom Opening 2" Above Rib Knit Seam		true	Half	1/4 in	-1 in	-1 in	23 in	1 in	1 1/2 in	1 1/2 in
Bottom Opening Width- At Edge	At bottom edge	true	Half	1/4 in	-1 in	-1 in	18 1/2 in	1 in	1 1/2 in	1 1/2 in
Bottom Trim Height	Bottom edge to top of trim	false	Full	1/8 in	0 in	0 in	2 3/4 in	0 in	0 in	0 in
Sleeve Length from CB Neck	3-point measure from CB Neck to shoulder point to sleeve edge	true	Full	1/2 in	-1 in	-1 in	35 in	1 in	1 in	1 in
Armhole Drop	Below HPS - measure perpendicular	false	Full	1/4 in	-3/8 in	-3/8 in	14 in	3/8 in	1/2 in	1/2 in
Bicep Width	1" below armhole- edge to edge	false	Half	1/4 in	-3/8 in	-3/8 in	10 1/2 in	3/8 in	1/2 in	1/2 in
Forearm Width	9" up from sleeve cuff edge	false	Half	1/4 in	-1/4 in	-1/4 in	7 3/4 in	1/4 in	3/8 in	3/8 in
Sleeve Opening Width 1" Above Rib Knit Seam		true	Half	1/4 in	-1/4 in	-1/4 in	5 3/4 in	1/4 in	3/8 in	3/8 in
Sleeve Opening Width- At Seam	Width at Seam	false	Half	1/4 in	-1/4 in	-1/4 in	4 3/4 in	1/4 in	3/8 in	3/8 in
Sleeve Opening Width- At Edge	At edge	false	Half	1/4 in	-1/4 in	-1/4 in	3 7/8 in	1/4 in	1/4 in	1/4 in
Sleeve Cuff Height	Cuff edge to seam	false	Full	1/8 in	0 in	0 in	2 3/4 in	0 in	0 in	0 in
Hood Height at CF	From neck seam to top edge	false	Half	3/8 in	0 in	-1/4 in	15 1/2 in	0 in	1/4 in	0 in
Hood Width @ HPS		true	Full	1/4 in	0 in	-1/4 in	14 in	0 in	1/4 in	0 in
Hood Width 6" Below Top Edge	Straight from CF edge to CB seam- 6" down	false	Half	3/8 in	-1/4 in	-1/4 in	11 in	1/4 in	1/4 in	1/4 in
Exposed Drawcord Length		false	Full	1/2 in	0 in	0 in	10 in	0 in	0 in	0 in
Drawcord Opening Placement up from Neck Seam		false	Full	1/8 in	0 in	0 in	1 in	0 in	0 in	0 in
Hood Tunnel Height		true	Full	1/8 in	0 in	0 in	1 in	0 in	0 in	0 in
Kangaroo Pocket Opening Hem Height		false	Full	1/8 in	0 in	0 in	7/8 in	0 in	0 in	0 in
Kangaroo Pocket Opening	Height at center	false	Full	1/4 in	-1/4 in	-1/4 in	6 in	1/4 in	1/4 in	1/4 in
Kangaroo Pocket Height At Center	Height at center	false	Full	1/4 in	-1/4 in	-1/4 in	8 1/2 in	1/4 in	1/4 in	1/4 in
Kangaroo Pocket Width at Top Edge	Width at top edge	false	Full	1/4 in	-1/4 in	-1/4 in	9 3/4 in	1/4 in	1/4 in	1/4 in
Kangaroo Pocket Width at Bottom	Width at Bottom Edge	false	Full	1/4 in	-1/4 in	-1/4 in	13 in	1/4 in	1/4 in	1/4 in
WL Artwork Placement from HPS to Top Edge		true	Full	1/8 in	-1/4 in	-1/4 in	7 1/2 in	1/4 in	1/4 in	1/4 in
WL Artwork Placement Out from CF Line		false	Full	1/8 in	-1/8 in	-1/8 in	2 1/2 in	1/8 in	1/8 in	1/8 in
Loop Label Placement at Sideseam	Bottom edge to bottom of loop label, at the WL side seam	false	Full	1/8 in	0 in	0 in	7 in	0 in	0 in	0 in

Sample Size: M

POINT OF MEASURE	HOW TO MEASURE	CRITICAL	TYPE	TOLERANCE	XS	S	M	L	XL	XXL
Front Body Length	HPS to bottom edge	true	Full	1/2 in	25 in	25 7/8 in	26 3/4 in	27 5/8 in	28 1/2 in	29 3/8 in
Back Body Length	CB neck seam to bottom edge	true	Full	1/2 in	24 1/4 in	25 1/8 in	26 in	26 7/8 in	27 3/4 in	28 5/8 in
CF Zipper Length	From neck to bottom edge	false	Full	1/4 in	21 1/2 in	22 1/4 in	23 in	23 3/4 in	24 1/2 in	25 1/4 in
Front Neck Drop	HPS to neck seam	false	Full	1/8 in	3 1/4 in	3 3/8 in	3 1/2 in	3 5/8 in	3 3/4 in	3 7/8 in
Back Neck Drop	HPS to neck seam	false	Full	1/8 in	3/4 in	3/4 in	3/4 in	3/4 in	3/4 in	3/4 in
Back Neck Width	Seam to seam at back neck, at HPS point	false	Full	1/4 in	8 1/2 in	8 3/4 in	9 in	9 1/4 in	9 1/2 in	9 3/4 in
Shoulder Seam Forward	HPS to seam	false	Full	1/8 in	1/2 in	1/2 in	1/2 in	1/2 in	1/2 in	1/2 in
Shoulder Slope	Shoulder point perpendicular to HPS	false	Full	1/4 in	2 1/2 in	2 1/2 in	2 1/2 in	2 1/2 in	2 1/2 in	2 1/2 in
Across Shoulder	Seam to seam	false	Half	1/4 in	22 in	23 in	24 in	25 in	26 1/2 in	28 in
Across Front/Across Back Position from HPS		true	Full	0 in	6 1/2 in	6 3/4 in	7 in	7 1/4 in	7 1/2 in	7 3/4 in
Across Front	Straight Down from HPS, Seam to Seam	false	Half	1/4 in	20 1/2 in	21 1/2 in	22 1/2 in	23 1/2 in	25 in	26 1/2 in
Across Back	Straight Down from HPS, Seam to Seam	false	Half	1/4 in	20 1/2 in	21 1/2 in	22 1/2 in	23 1/2 in	25 in	26 1/2 in
Chest Width	1" Below armhole- edge to edge	true	Half	1/4 in	22 1/2 in	23 1/2 in	24 1/2 in	25 1/2 in	27 in	28 1/2 in
Bottom Opening 2" Above Rib Knit Seam		true	Half	1/4 in	21 in	22 in	23 in	24 in	25 1/2 in	27 in
Bottom Opening Width- At Edge	At bottom edge	true	Half	1/4 in	16 1/2 in	17 1/2 in	18 1/2 in	19 1/2 in	21 in	22 1/2 in
Bottom Trim Height	Bottom edge to top of trim	false	Full	1/8 in	2 3/4 in	2 3/4 in	2 3/4 in	2 3/4 in	2 3/4 in	2 3/4 in
Sleeve Length from CB Neck	3-point measure from CB Neck to shoulder point to sleeve edge	true	Full	1/2 in	33 in	34 in	35 in	36 in	37 in	38 in
Armhole Drop	Below HPS - measure perpendicular	false	Full	1/4 in	13 1/4 in	13 5/8 in	14 in	14 3/8 in	14 7/8 in	15 3/8 in
Bicep Width	1" below armhole- edge to edge	false	Half	1/4 in	9 3/4 in	10 1/8 in	10 1/2 in	10 7/8 in	11 3/8 in	11 7/8 in
Forearm Width	9" up from sleeve cuff edge	false	Half	1/4 in	7 1/4 in	7 1/2 in	7 3/4 in	8 in	8 3/8 in	8 3/4 in
Sleeve Opening Width 1" Above Rib Knit Seam		true	Half	1/4 in	5 1/4 in	5 1/2 in	5 3/4 in	6 in	6 3/8 in	6 3/4 in
Sleeve Opening Width- At Seam	Width at Seam	false	Half	1/4 in	4 1/4 in	4 1/2 in	4 3/4 in	5 in	5 3/8 in	5 3/4 in
Sleeve Opening Width- At Edge	At edge	false	Half	1/4 in	3 3/8 in	3 5/8 in	3 7/8 in	4 1/8 in	4 3/8 in	4 5/8 in
Sleeve Cuff Height	Cuff edge to seam	false	Full	1/8 in	2 3/4 in	2 3/4 in	2 3/4 in	2 3/4 in	2 3/4 in	2 3/4 in
Hood Height at CF	From neck seam to top edge	false	Half	3/8 in	15 1/4 in	15 1/4 in	15 1/2 in	15 1/2 in	15 3/4 in	15 3/4 in
Hood Width @ HPS		true	Full	1/4 in	13 3/4 in	13 3/4 in	14 in	14 in	14 1/4 in	14 1/4 in
Hood Width 6" Below Top Edge	Straight from CF edge to CB seam- 6" down	false	Half	3/8 in	10 1/2 in	10 3/4 in	11 in	11 1/4 in	11 1/2 in	11 3/4 in
Exposed Drawcord Length		false	Full	1/2 in	10 in	10 in	10 in	10 in	10 in	10 in
Drawcord Opening Placement up from Neck Seam		false	Full	1/8 in	1 in	1 in	1 in	1 in	1 in	1 in
Hood Tunnel Height		true	Full	1/8 in	1 in	1 in	1 in	1 in	1 in	1 in
Kangaroo Pocket Opening Hem Height		false	Full	1/8 in	7/8 in	7/8 in	7/8 in	7/8 in	7/8 in	7/8 in
Kangaroo Pocket Opening	Height at center	false	Full	1/4 in	5 1/2 in	5 3/4 in	6 in	6 1/4 in	6 1/2 in	6 3/4 in
Kangaroo Pocket Height At Center	Height at center	false	Full	1/4 in	8 in	8 1/4 in	8 1/2 in	8 3/4 in	9 in	9 1/4 in
Kangaroo Pocket Width at Top Edge	Width at top edge	false	Full	1/4 in	9 1/4 in	9 1/2 in	9 3/4 in	10 in	10 1/4 in	10 1/2 in
Kangaroo Pocket Width at Bottom	Width at Bottom Edge	false	Full	1/4 in	12 1/2 in	12 3/4 in	13 in	13 1/4 in	13 1/2 in	13 3/4 in
WL Artwork Placement from HPS to Top Edge		true	Full	1/8 in	7 in	7 1/4 in	7 1/2 in	7 3/4 in	8 in	8 1/4 in
WL Artwork Placement Out from CF Line		false	Full	1/8 in	2 1/4 in	2 3/8 in	2 1/2 in	2 5/8 in	2 3/4 in	2 7/8 in
Loop Label Placement at Sideseam	Bottom edge to bottom of loop label, at the WL side seam	false	Full	1/8 in	7 in	7 in	7 in	7 in	7 in	7 in

Measured Size: M

POINT OF MEASURE	HOW TO MEASURE	CRITICAL	TYPE	TOLERANCE	EXPECTED	PPS - RCVD	VARIANCE	ADJUST BY +/-	REVISED SPEC	MEASUREMENT NOTES
Front Body Length	HPS to bottom edge	true	Full	1/2 in	26 3/4 in	27 1/4 in	1/2 in	0 in	26 3/4 in	
Back Body Length	CB neck seam to bottom edge	true	Full	1/2 in	26 in	26 1/4 in	1/4 in	0 in	26 in	
CF Zipper Length	From neck to bottom edge	false	Full	1/4 in	23 in	23 1/4 in	1/4 in	0 in	23 in	
Front Neck Drop	HPS to neck seam	false	Full	1/8 in	3 1/2 in	3 3/4 in	1/4 in	0 in	3 1/2 in	Back to Spec
Back Neck Drop	HPS to neck seam	false	Full	1/8 in	3/4 in	3/4 in	0 in	0 in	3/4 in	
Back Neck Width	Seam to seam at back neck, at HPS point	false	Full	1/4 in	9 in	9 in	0 in	0 in	9 in	
Shoulder Seam Forward	HPS to seam	false	Full	1/8 in	1/2 in	1/2 in	0 in	0 in	1/2 in	
Shoulder Slope	Shoulder point perpendicular to HPS	false	Full	1/4 in	2 1/2 in	3 in	1/2 in	0 in	2 1/2 in	Back to Spec
Across Shoulder	Seam to seam	false	Half	1/4 in	24 in	24 in	0 in	0 in	24 in	
Across Front/Across Back Position from HPS		true	Full	0 in	7 in	7 in	0 in	0 in	7 in	
Across Front	Straight Down from HPS, Seam to Seam	false	Half	1/4 in	22 1/2 in	22 1/4 in	-1/4 in	0 in	22 1/2 in	
Across Back	Straight Down from HPS, Seam to Seam	false	Half	1/4 in	22 1/2 in	22 3/4 in	1/4 in	0 in	22 1/2 in	
Chest Width	1" Below armhole- edge to edge	true	Half	1/4 in	24 1/2 in	24 1/2 in	0 in	0 in	24 1/2 in	
Bottom Opening 2" Above Rib Knit Seam		true	Half	1/4 in	23 in	23 in	0 in	0 in	23 in	
Bottom Opening Width- At Edge	At bottom edge	true	Half	1/4 in	18 1/2 in	19 in	1/2 in	0 in	18 1/2 in	Back to Spec
Bottom Trim Height	Bottom edge to top of trim	false	Full	1/8 in	2 3/4 in	2 7/8 in	1/8 in	0 in	2 3/4 in	
Sleeve Length from CB Neck	3-point measure from CB Neck to shoulder point to sleeve edge	true	Full	1/2 in	35 in	34 3/4 in	-1/4 in	0 in	35 in	
Armhole Drop	Below HPS - measure perpendicular	false	Full	1/4 in	13 1/4 in	14 in	3/4 in	3/4 in	14 in	Keep As Sample
Bicep Width	1" below armhole- edge to edge	false	Half	1/4 in	10 1/2 in	10 1/2 in	0 in	0 in	10 1/2 in	
Forearm Width	9" up from sleeve cuff edge	false	Half	1/4 in	7 3/4 in	7 7/8 in	1/8 in	0 in	7 3/4 in	
Sleeve Opening Width 1" Above Rib Knit Seam		true	Half	1/4 in	5 3/4 in	5 3/4 in	0 in	0 in	5 3/4 in	
Sleeve Opening Width- At Seam	Width at Seam	false	Half	1/4 in	4 3/4 in	4 3/4 in	0 in	0 in	4 3/4 in	
Sleeve Opening Width- At Edge	At edge	false	Half	1/4 in	3 7/8 in	3 3/4 in	-1/8 in	0 in	3 7/8 in	
Sleeve Cuff Height	Cuff edge to seam	false	Full	1/8 in	2 3/4 in	2 7/8 in	1/8 in	0 in	2 3/4 in	
Hood Height at CF	From neck seam to top edge	false	Half	3/8 in	15 1/2 in	15 1/2 in	0 in	0 in	15 1/2 in	
Hood Width @ HPS		true	Full	1/4 in	14 in	13 3/4 in	-1/4 in	0 in	14 in	
Hood Width 6" Below Top Edge	Straight from CF edge to CB seam- 6" down	false	Half	3/8 in	11 in	10 3/4 in	-1/4 in	0 in	11 in	
Exposed Drawcord Length		false	Full	1/2 in	10 in	9 in	-1 in	0 in	10 in	Back to Spec
Drawcord Opening Placement up from Neck Seam		false	Full	1/8 in	1 in	1 in	0 in	0 in	1 in	
Hood Tunnel Height		true	Full	1/8 in	1 in	1 in	0 in	0 in	1 in	
Kangaroo Pocket Opening Hem Height		false	Full	1/8 in	7/8 in	7/8 in	0 in	0 in	7/8 in	
Kangaroo Pocket Opening	Height at center	false	Full	1/4 in	6 in	6 in	0 in	0 in	6 in	
Kangaroo Pocket Height At Center	Height at center	false	Full	1/4 in	8 1/2 in	8 1/2 in	0 in	0 in	8 1/2 in	
Kangaroo Pocket Width at Top Edge	Width at top edge	false	Full	1/4 in	9 3/4 in	9 7/8 in	1/8 in	0 in	9 3/4 in	
Kangaroo Pocket Width at Bottom	Width at Bottom Edge	false	Full	1/4 in	13 in	13 in	0 in	0 in	13 in	
WL Artwork Placement from HPS to Top Edge		true	Full	1/8 in	7 1/2 in	7 in	-1/2 in	0 in	7 1/2 in	Back to Spec

WL Artwork Placement Out from CF Line		false	Full	1/8 in	2 1/4 in	2 1/2 in	1/4 in	1/4 in	2 1/2 in	Keep As Sample
Loop Label Placement at Sideseam	Bottom edge to bottom of loop label, at the WL side seam	false	Full	1/8 in	7 in	7 1/2 in	1/2 in	0 in	7 in	Back to Spec

PPS - Anastasiya Zolotova

CREATED ON JUN 5, 2025 8:33 PM  
PPS: SIZE:M, CREATED AT: 06-04-2025

FW25CH001 Waffle Lined Hoodie  
**FITTING DATE:** 6/5/25  
**MODEL/ATTENDEES:** Jessica, Cal, Anthony, Wes, Megan, Jeni, Anastasiya  
**STATUS:** PPS Approved to TOP

Fit Comments:

- 1. Front neck drop came in +1/4", go back to spec.
- 2. Shoulder slope came in +1/2", go back to spec.
- 3. Bottom opening at edge came in +1/2", go back to spec.
- 4. Armhole drop came in 14", keep as sample.
- 5. Exposed drawcord length came in -1", go back to spec.
- 6. WL artwork came in -1/2", go back to spec.
- 7. WL artwork from CF came in 2 1/2", keep as sample.
- 8. Loop label placement came in +1/4", go back to spec.

Construction/Workmanship:

- 1. Please improve hood tunnel workmanship, stitching is uneven. See image.
- 2. Please improve pocket top edge workmanship, stitching is uneven. See image.

- 1. Độ hạ cổ trước bị dư 1/4 inch, điều chỉnh lại theo thông số kỹ thuật.
  - 2. Độ dốc vai bị dư 1/2 inch, điều chỉnh lại theo thông số kỹ thuật.
  - 3. Rộng gấu tại mép bị dư 1/2 inch, điều chỉnh lại theo thông số kỹ thuật.
  - 4. Độ sâu nách là 14 inch, giữ nguyên theo mẫu.
  - 5. Chiều dài dây rút lộ ra bị thiếu 1 inch, điều chỉnh lại theo thông số kỹ thuật.
  - 6. Vị trí hình in WL (Wrist Left?) bị thiếu 1/2 inch, điều chỉnh lại theo thông số kỹ thuật.
  - 7. Vị trí hình in WL từ CF (Giữa thân trước) là 2 1/2 inch, giữ nguyên theo mẫu.
  - 8. Vị trí nhãn vòng bị dư 1/4 inch, điều chỉnh lại theo thông số kỹ thuật.
- 
- 1. Vui lòng cải thiện chất lượng gia công đường luồn mũ, đường may không đều. Xem hình ảnh.
  - 2. Vui lòng cải thiện chất lượng gia công mép trên túi, đường may không đều. Xem hình ảnh.





Screen Shot 2025-06-05 at 12.18.04 PM.jpg



### FW25CH001 Waffle Lined Hoodie

Vui lòng cải thiện chất lượng gia công mép trên túi, đường may không đều.  
Please improve pocket top edge workmanship, stitching is uneven.



Screen Shot 2025-06-05 at 9.05.57 PM.jpg



**FW25CH001 Waffle Lined Hoodie**

Vui lòng cải thiện chất lượng gia công đường luồn mũ, đường may không đều.  
Please improve hood tunnel workmanship, stitching is uneven.



Screen Shot 2025-06-05 at 9.07.07 PM.jpg