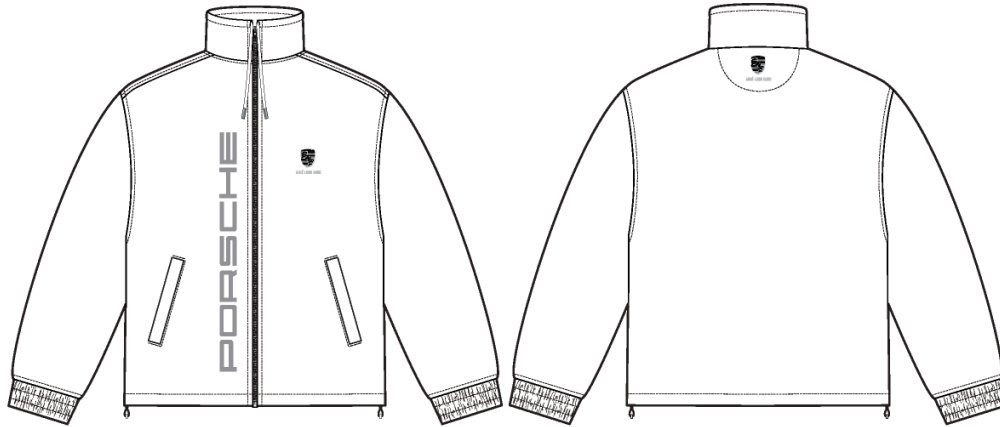


# Porsche Nylon Track Jacket - Style #FW25WJ071

Mens, Outerwear, Fall/Winter, 2025

## Summary

02-21-2025



Name Porsche Nylon Track Jacket

Style No. FW25WJ071

Division Mens

Category Outerwear

Season Fall/Winter

Year 2025

Size Scale **M** -Sample size

XS  S  M  L  XL  XXL

Style Status Development

Factory UN-AVAILABLE

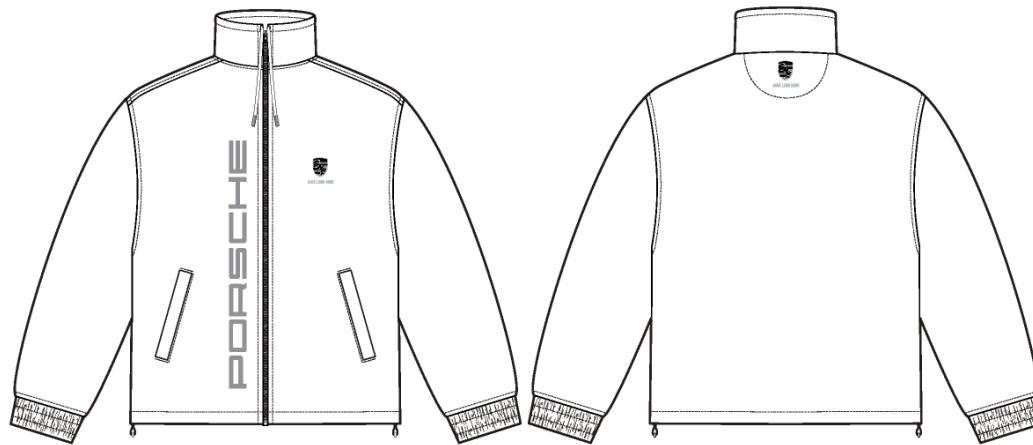
Designer Name Quinton

Created by/Author 2/21/2025

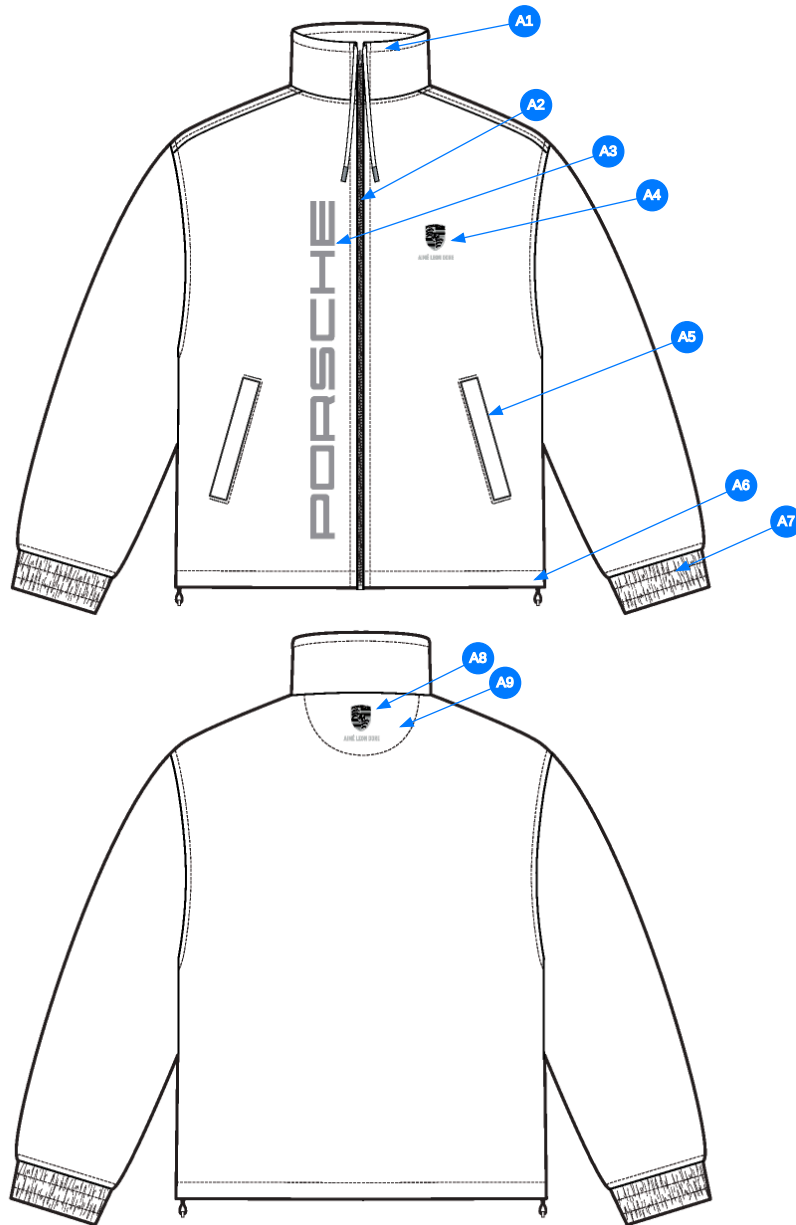
Hyeyoung Cho

hyeyoung@aimeleondore.com

## Porsche Nylon Track Jacket



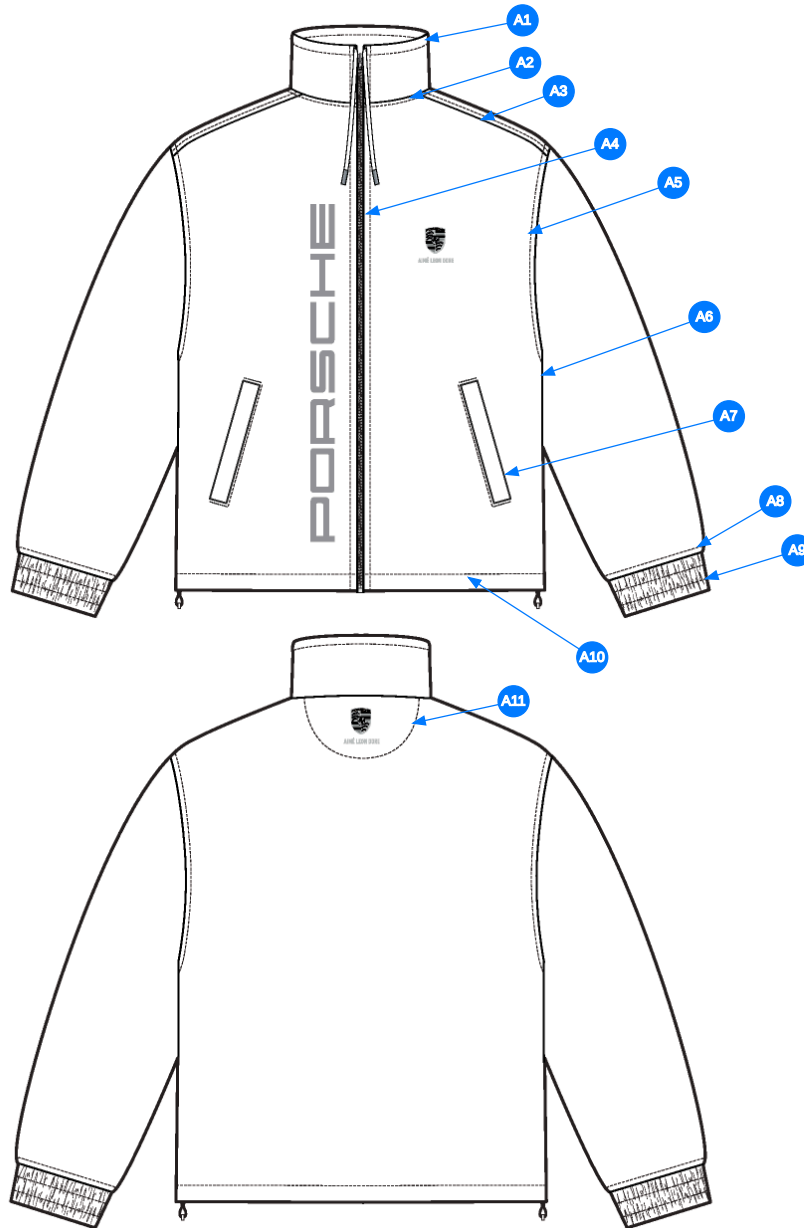
1\_B+W-1



Comments (9)

- A1** BANDCOLLAR CONSTRUCTION w/ DRAWCORDS @ TOP EDGE OF COLLAR
- A2** ZIPPER @ CF CLOSURE
- A3** TBD EMBROIDERED ARTWORK @ WRS RIGHT SIDE OF CF
- A4** TBD EMBROIDERED ARTWORK @ WRS LEFT CHEST
- A5** SINGLE WELT POCKETS - USE SELF FOR POCKET BAGS
- A6** DRAWCORD AND BUNGEE CONSTRUCTION @ HEM
- A7** SET-IN ELASTICATED SLEEVE CUFFS
- A8** TBD EMBROIDERED ARTWORK @ CB NECK
- A9** INTERIOR SELF HALF MOON CONSTRUCTION

3\_CONSTRUCTION DETAILS-1





Comments (11)

- A1** 3/8" SN TS @ DRAWCORD TUNNEL
- A2** 1/4" SN TS @ NECK SEAM
- A3** 1/4" SN TS @ SHOULDER SEAMS
- A4** 1/4" SN TS @ BOTH SIDES OF CF ZIPPER
- A5** 1/4" SN TS @ ARMHOLES
- A6** 1/4" SN TS @ SIDE SEAMS
- A7** EDGESTITCH @ SINGLE WELT POCKETS w/ BARTACK REINFORCEMENT
- A8** 1/4" SN TS @ SLEEVE CUFF SEAMS
- A9** SINGLE NEEDLE TOPSTITCH @ ELASTICATED SLEEVE CUFFS
- A10** 3/4" SN TS @ HEM
- A11** SINGLE NEEDLE STITCH-THRU @ INTERIOR HALF MOON

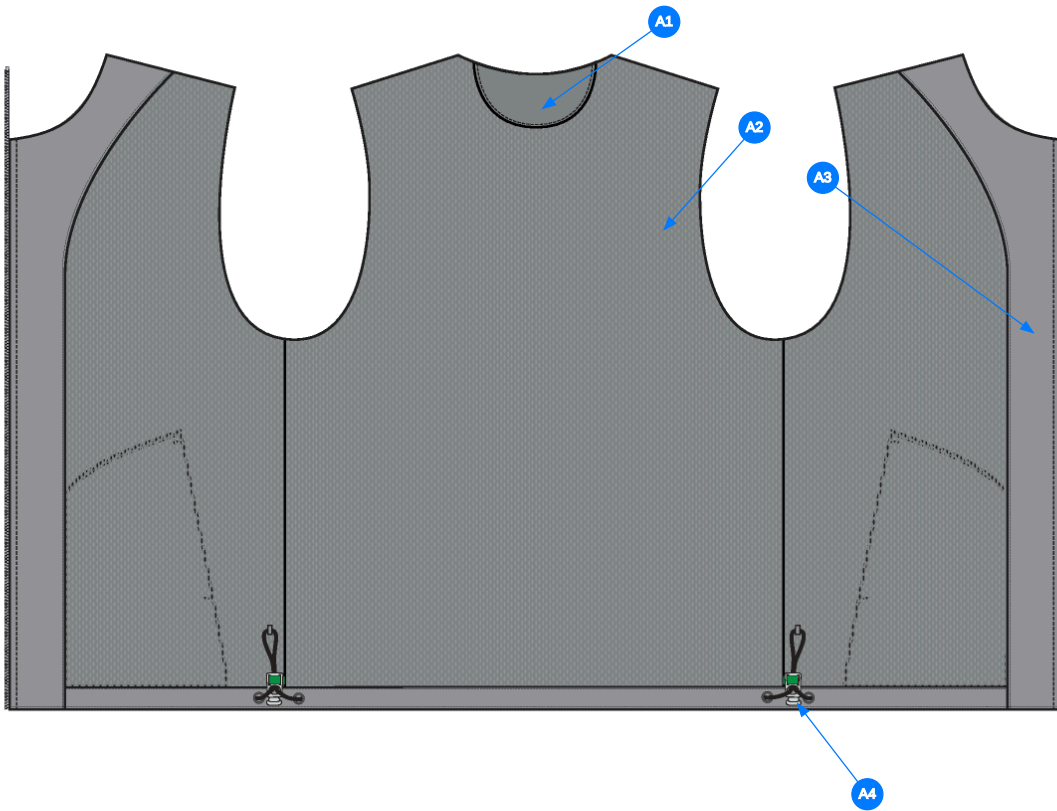
4\_STITCHING DETAILS-1

## INTERIOR VIEW

-  SHELL FABRIC
-  MESH LINING

Comments (4)

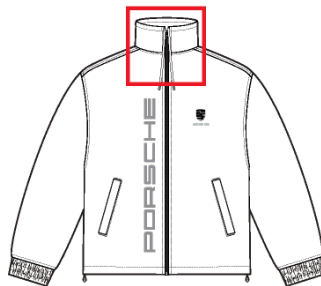
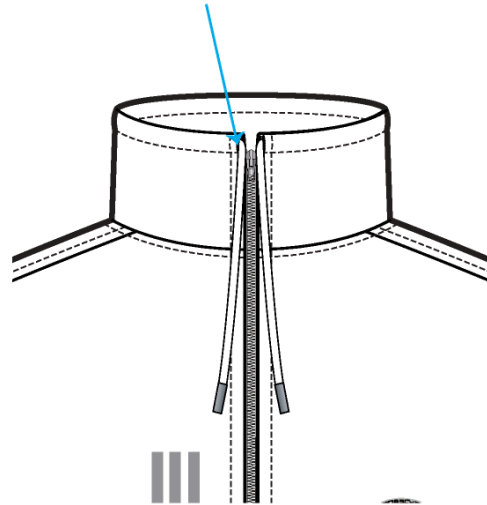
- A1** SELF FABRIC HALF MOON
- A2** MESH HUNG LINING
- A3** SELF FABRIC FACING
- A4** BUNGEE AND STOPPER CONSTRUCTION - SEE CALLOUT PAGE FOR DETAILS



5\_INTERIOR VIEW\_02-1

### CF CLOSURE DETAILS OPENED CF VIEW

DRAWCORD AT TOP EDGE OF COLLAR



7\_COLLAR DETAILS-1

**REFERENCE IMAGE**



8\_REFERENCE IMAGE-1

# Porsche Nylon Track Jacket - Style #FW25WJ071

Mens, Outerwear, Fall/Winter, 2025

## Size Specifications - Measurements / 1st Proto

02-21-2025

### Measured Size: M

POINT OF MEASURE	HOW TO MEASURE	CRITICAL	TYPE	TOLERANCE	EXPECTED	1ST PROTO - RCVD	VARIANCE	REVISED SPEC	MEASUREMENT NOTES
FRONT BODY LENGTH	FROM HPS TO BOTTOM EDGE	true	Full	1/2 in	27 in	26 3/4 in	-1/4 in	27 in	BTS
BACK BODY LENGTH	FROM CB NECK SEAM TO BOTTOM EDGE	true	Full	1/2 in	26 3/8 in	26 1/4 in	-1/8 in	26 3/8 in	
CF ZIPPER LENGTH	FROM ZIPPER TIP TO TIP	true	Full	1/4 in	26 in	25 in	-1 in	25 1/2 in	INCREASE
FRONT NECK DROP	FROM HPS LEVEL STRAIGHT DOWN TO CF NECK SEAM	true	Full	1/8 in	4 1/4 in	4 1/2 in	1/4 in	4 1/2 in	KEEP
BACK NECK DROP	FROM HPS LEVEL STRAIGHT DOWN TO CB NECK SEAM	true	Full	1/8 in	5/8 in	1/2 in	-1/8 in	3/4 in	INCREASE BY 1/4"
BACK NECK WIDTH	FROM SEAM TO SEAM AT BACK PANEL	true	Full	1/4 in	7 1/4 in	6 3/4 in	-1/2 in	7 1/4 in	INCREASE BACK TO SPEC
SHOULDER SLOPE	FROM HPS LEVEL STRAIGHT DOWN TO TOP OF ARMHOLE SM	true	Full	1/8 in	2 1/4 in	2 1/4 in	0 in	2 1/4 in	
SHOULDER SEAM FORWARD	FROM HPS TO SHOUDLER SEAM AT NECK	false	Full	1/8 in	7/8 in	1 in	1/8 in	7/8 in	
ACROSS SHOULDER	FROM ARMHOLE SEAM TO SEAM AT BACK PANEL	true	Full	1/4 in	19 3/4 in	19 3/4 in	0 in	21 in	INCREASE
ACROSS FRONT	FROM ARMHOLE SEAM TO SEAM, 7" BELOW HPS	true	Full	1/4 in	17 1/4 in	17 3/8 in	1/8 in	19 in	INCREASE
ACROSS BACK	FROM ARMHOLE SEAM TO SEAM, 7" BELOW HPS	true	Full	1/4 in	18 3/4 in	18 3/4 in	0 in	19 3/4 in	INCREASE
CHEST CIRCUMFERENCE	MEASURE 1" BELOW ARMHOLE	true	Full	1/2 in	48 in	47 1/2 in	-1/2 in	49 in	INCREASE
BOTTOM OPENING CIRCUMFERENCE, STRETCHED	MEASURE AT BOTTOM HEM SEAM, STRETCHED	true	Full	1/2 in	46 in	46 in	0 in	47 in	INCREASE
ARMHOLE DROP	FROM HPS LEVEL STRAIGHT DOWN TO UNDERARM SEAM	true	Full	1/4 in	12 1/4 in	12 in	-1/4 in	12 1/2 in	INCREASE
BICEP CIRCUMFERENCE	MEASURE AT 1" BELOW ARMHOLE	true	Full	1/4 in	18 3/4 in	19 in	1/4 in	19 1/2 in	INCREASE
FOREARM CIRCUMFERENCE	MEASURE AT 9" ABOVE SLEEVE HEM EDGE	true	Full	1/4 in	15 in	15 1/4 in	1/4 in	15 1/2 in	INCREASE
SLEEVE OPENING CIRCUMFERENCE, STRETCHED	MEASURE AT SLEEVE EDGE	true	Full	1/4 in	12 1/2 in	12 1/2 in	0 in	12 1/2 in	KEEP
SLEEVE OPENING CIRCUMFERENCE, RELAXED		true	Full	1/4 in	9 in	9 in	0 in	9 in	KEEP
SLEEVE LENGTH	3PT MEAS. FROM CB NECK, ARMHOLE TO SLEEVE HEM EDGE	true	Full	1/2 in	35 1/2 in	34 3/4 in	-3/4 in	35 1/2 in	BTS
SLEEVE HEM HEIGHT		false	Full	1/8 in	1 5/8 in	1 5/8 in	0 in	1 5/8 in	
COLLAR HEIGHT AT CF		false	Full	1/8 in	3 1/2 in	3 1/4 in	-1/4 in	3 1/2 in	BTS
COLLAR HEIGHT AT CB		false	Full	1/8 in	1 5/8 in	1 3/4 in	1/8 in	2 1/4 in	INCREASE BY 1/2"
COLLAR LENGTH ALONG OUTER EDGE		false	Full	1/4 in	20 in	20 in	0 in	21 in	INCREASE/ADJUST
COLLAR DRAWCORD LENGTH, TOTAL		false	Full	1/2 in	32 in	32 in	0 in	35 in	INCREASE
POCKET POSITION ABOVE BOTTOM HEM EDGE	MEASURE AT SIDE BY SIDE SEAM	false	Full	1/8 in	3 1/2 in	3 5/8 in	1/8 in	3 7/8 in	RAISE BY 1/4"
POCKET POSITION FROM SIDE SEAM AT TOP EDGE		false	Full	1/4 in	5 1/2 in	5 1/4 in	-1/4 in	5 1/2 in	BACK TO SPEC
POCKET POSITION FROM SIDE SEAM AT BOTTOM EDGE		false	Full	1/4 in	2 1/4 in	2 1/8 in	-1/8 in	2 1/4 in	BACK TO SPEC
POCKET WELT WIDTH		false	Full	1/8 in	5/8 in	5/8 in	0 in	7/8 in	INCREASE BY 1/4"



# Porsche Nylon Track Jacket - Style #FW25WJ071

Mens, Outerwear, Fall/Winter, 2025

## Size Specifications - Measurements / 1st Proto

02-21-2025

POCKET WELT LENGTH		false	Full	1/4 in	<b>7 in</b>	6 3/4 in	-1/4 in	7 in	
W/R LOGO POSITION BELOW HPS		false	Full	1/8 in	<b>0 in</b>	0 in	0 in	0 in	
W/R LOGO POSITION FROM TRUE CF		false	Full	1/8 in	<b>0 in</b>	0 in	0 in	0 in	
W/L LOGO POSITION BELOW HPS		false	Full	1/8 in	<b>0 in</b>	0 in	0 in	0 in	
W/L LOGO POSITION FROM TRUE CF		false	Full	1/8 in	<b>0 in</b>	0 in	0 in	0 in	
CB ARTWORK FROM CB NECK SEAM		false	Full	1/16 in	<b>0 in</b>	0 in	0 in	0 in	

## 1st Proto - Hyeyoung Cho

CREATED ON FEB 11, 2025 10:08 PM

1ST PROTO: SIZE:M, CREATED AT: 02-05-2025

Date : 2/11/25

TD : Hyeyoung Cho

Status : Submit 1st Fit

### Fit :

1. Increase overall body and sleeve width as requested spec.
2. Front and back armhole height is not balanced. Back armhole height is shorter than the front armhole height.
  - a. Increase the armhole drop to 12 1/2", and level the front and back panel armhole drop. See diagram.
3. Underarm shape is too pointy. Make sure the underarm width is wide enough - minimum 4"~4 1/2" when measured 1" above the armhole drop. See photo.
4. Increase the front body and back body length back to spec.
5. Increase the sleeve length back to spec.
6. Please follow below on the neck and collar.
  - b. Keep the front neck drop at 4 1/2" as sample.
  - c. Increase the back neck drop by 1/4" to 3/4".
  - d. Increase the back neck width back to spec and coop out front neck shape, so the collar sits slightly away from wearer's face. See photo.
  - e. Increase the collar height at CF back to spec and increase the collar height at CB by 1/2".
  - f. Increase the collar length along top edge by 1". Please additionally adjust the collar length as needed.
7. Please follow below on the welt pockets.
  - g. Increase the welt width by 1/4" to 7/8" by adding to the side by CF.
  - h. Move up the pocket by 1/4".
  - i. Bring the position from side seams back to spec.
8. Increase the front facing width by 1/2" all the way.
9. Bring all other measurements to requested spec.

### Construction :

1. Collar drawcord length will be confirmed on the 1st fit sample. Please make the drawcord exposed 7" from the cord extis. The revised length has been calculated with 7" exposed length at either side.
2. Cancel the tape loop at the bungee stopper and change to shell fabric loop attaching to the side seam.
  - a. Attach to the mesh lining + to the shell body using the double needle topstitching to prevent mesh ripping. See photo and sample marking.
  - b. If the above construction is too complicated, add a reinforcement to the lining seam and attach the shell loop to lining only.
  - c. Make sure the bungee length is long enough for the new construction.

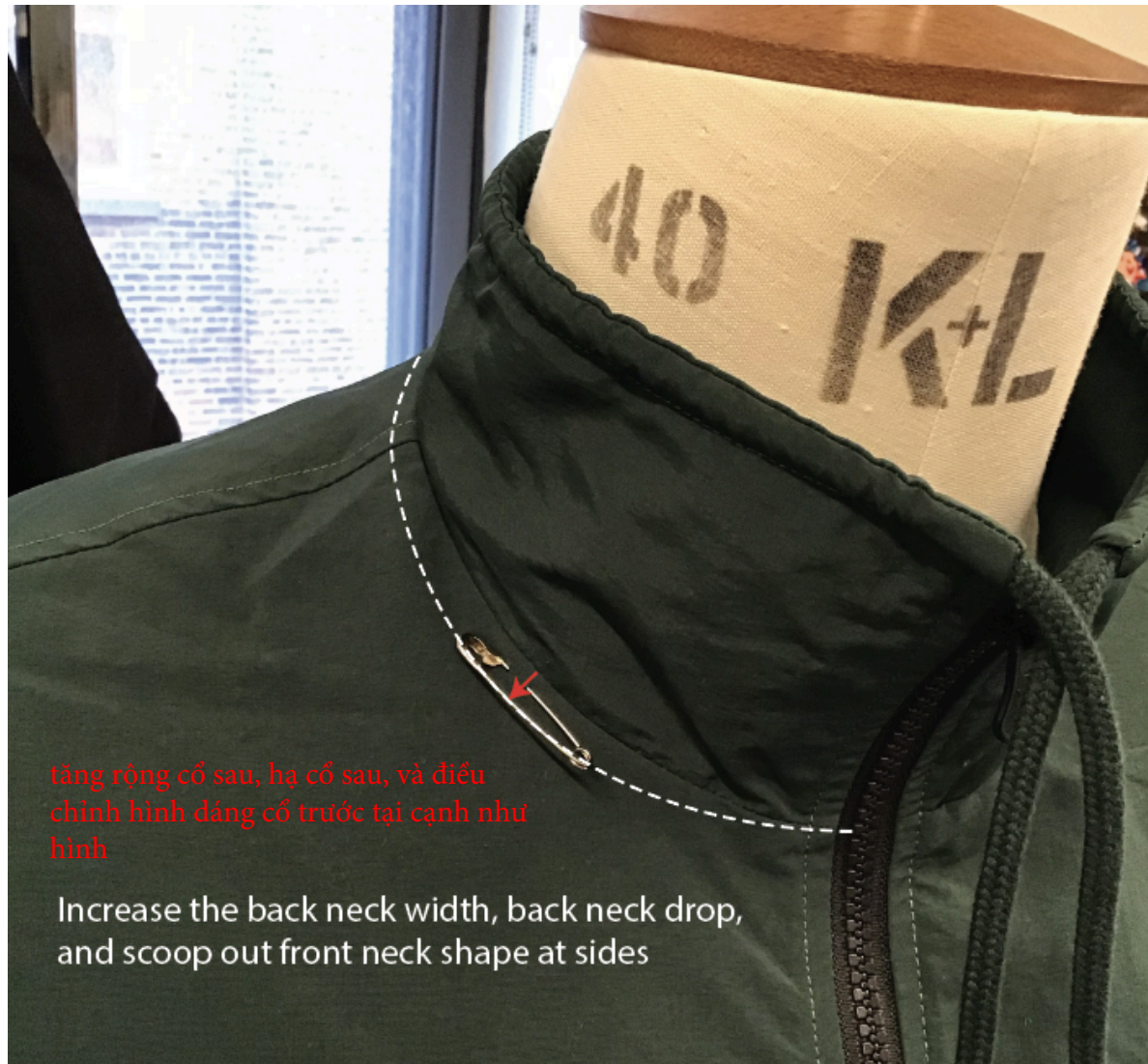
3. Add a decorative CB half moon stitching following the interior CB half moon facing shape. Interior half moon dose not need to be stitched together with the decorative topstitching.

Fit:

1. tăng rộng thân và tay như thông số yêu cầu
  2. cao nách trước và sau không đều. Cao nách sau ngắn hơn cao nách trước
    - a. tăng hạ nách 12 1/2", và điều chỉnh hạ nách trước và sau như hình bên dưới
  3. hình dáng nách quá nhọn. Đảm bảo rộng nách rộng đủ tối thiểu 4 - 4 1/2" khi đo 1 " trên hạ nách, xem hình bên dưới
  4. tăng dài thân trước và thân sau như thông số
  5. tăng dài tay như thông số
  6. vui lòng điều chỉnh theo bên dưới cho cổ và lá cổ
    - b. giữ hạ cổ trước 4 1/2" như mẫu
    - c. tăng hạ cổ sau thêm 1/4" thông số yêu cầu 3/4"
    - d. tăng rộng cổ sau như yêu cầu và điều chỉnh hình dáng cổ sao cho lá cổ hơi xa mặt của người mặc, xem hình bên dưới
    - e. tăng cao lá cổ tại giữa trước như thông số yêu cầu là tăng lá cổ tại giữa sau thêm 1/2"
    - f. tăng dài lá cổ dọc mép trên thêm 1". Vui lòng điều chỉnh thêm dài lá cổ nếu cần
  7. vui lòng điều chỉnh theo bên dưới cho cơi túi
    - g. tăng rộng cơi túi thêm 1/4" thông số là 7/8" bằng cách thêm tại cách giữa trước
    - h. dời túi lên thêm 1/4"
    - i. đưa vị trí túi từ đường may sườn theo thông số yêu cầu
  8. tăng rộng facing trước thêm 1/2"
  9. điều chỉnh tất cả thông số còn lại trong dung sai
- cấu trúc:
1. dài dây luôn sẽ được xác nhận trên mẫu fit. Vui lòng làm mẫu dây luôn dư ra khỏi mắt cáo 7" tại mỗi bên
  2. bỏ cấu trúc tape loop tại dây luôn tròn ở lại và thay đổi thành shell loop bằng vải chính dính tại đường may sườn. xem hình bên dưới
    - a. gắn vào lớp lót lưới + vải chính bằng cách điều 2 kim để tránh rách lớp lót lưới như hình bên dưới và mẫu đánh dấu
    - b. nếu cấu trúc trên quá phức tạp, chỉ gắn shell loop vào đường may lớp lót lưới
    - c. đảm bảo dài dây luôn tròn tại lại đủ để đủ cho cấu trúc mới
    - d. thêm dấu trang trí bán nguyệt thân sau theo hình dáng bán nguyệt thân sau bên trong. bán nguyệt thân sau không cần điều lại với nhau bằng đường dấu trang trí

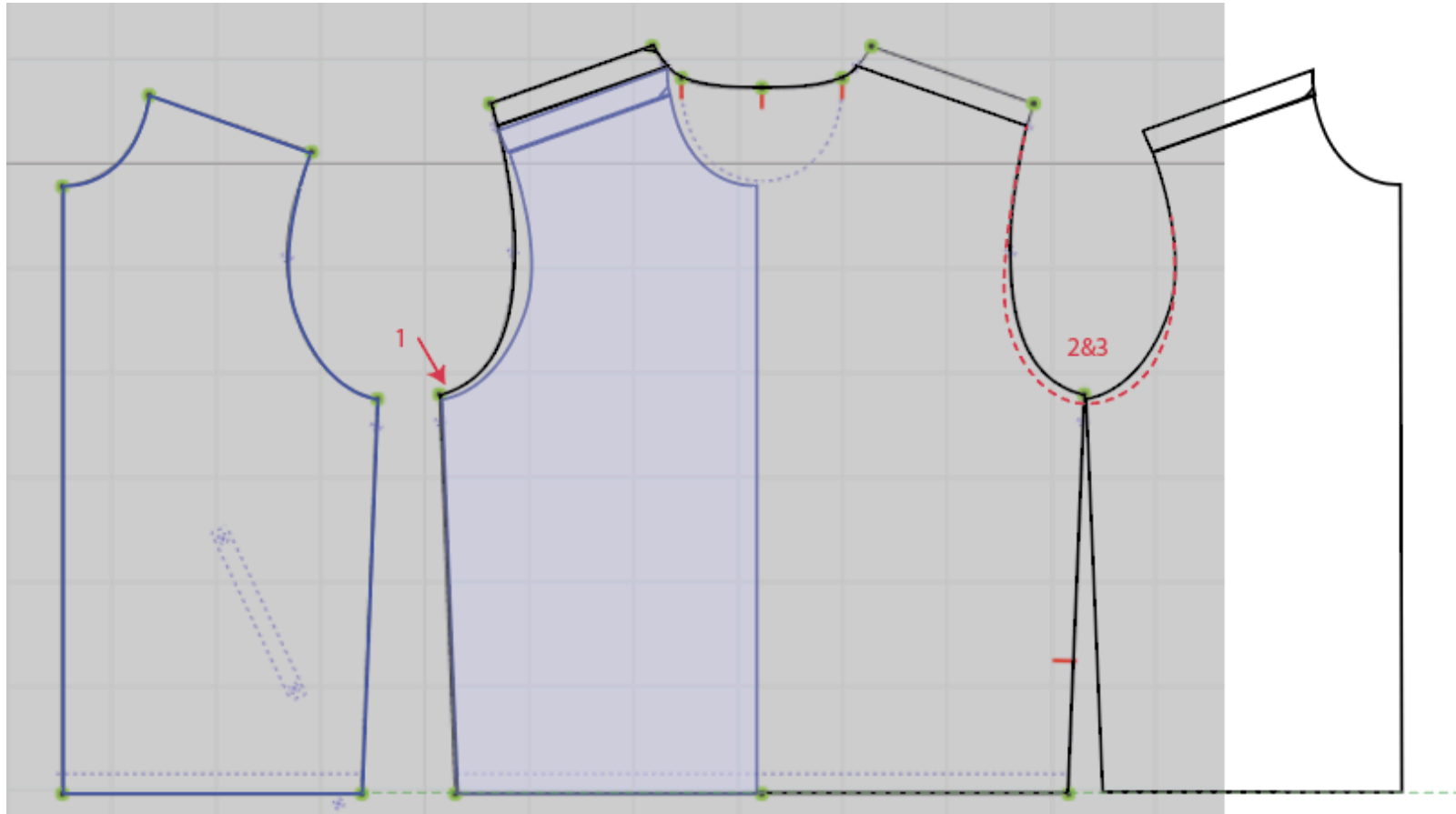


Screenshot 2025-02-12 at 10.26.57 AM.jpg



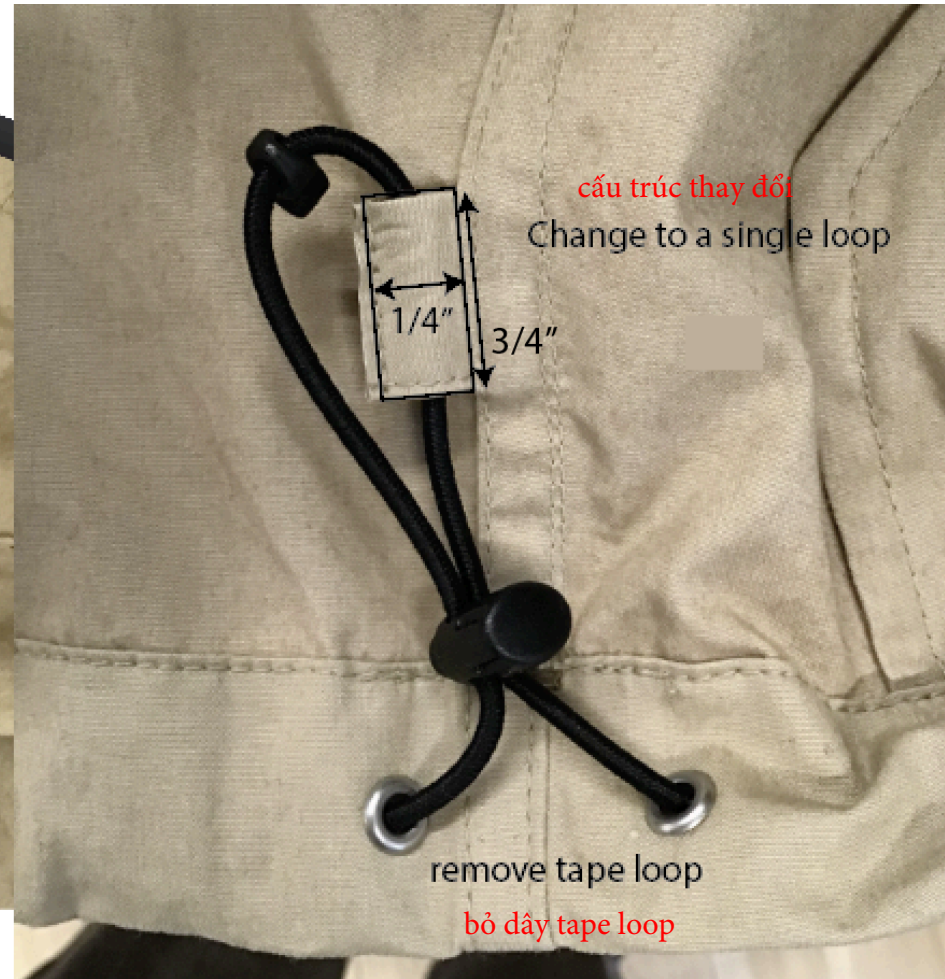
Screenshot 2025-02-12 at 10.31.06 AM.jpg

1. cao nách sau bị ngắn hơn cao nách trước
2. tăng hạ nách 12 1/2", điều chỉnh cao nách trước và nách sau
3. rộng nách quá hẹp. nhìn rập có vẻ được nhưng trên mẫu quá hẹp



1. Back armhole height is slightly shorter than the front armhole height.
2. Increase the armhole drop to 12 1/2", and level the front and back armhole height (level the armhole drop)
3. Underarm width is too narrow. It looks better on the pattern, but looks a lot narrower on the sample.

Screenshot 2025-02-18 at 1.56.47 PM.jpg



Screenshot 2025-02-21 at 8.28.36 AM.jpg



FW25WJ071 Porsche Nylon Track Jacket										Size Specifications - Measurements		
Sample Size: M	POINT OF MEASURE	HOW TO MEASURE		CRITICAL	TYPE	TOLERANCE	EXPECTED M	1ST PROTO - RCVD	VARIANCE	REVISED SPEC	MEASUREMENT NOTES	
FRONT BODY LENGTH	DÀI ÁO THÂN TRƯỚC	FROM HPS TO BOTTOM EDGE	TỪ ĐỈNH VAI ĐẾN MÉP LAI	true	Full	1/2 in	27 in	26 3/4 in	-1/4 in	27 in	BTS	
BACK BODY LENGTH	DÀI ÁO THÂN SAU	FROM CB NECK SEAM TO BOTTOM EDGE	TỪ GIỮA CỘ SAU ĐẾN LẠI	true	Full	1/2 in	26 3/8 in	26 1/4 in	-1/8 in	26 3/8 in		
CF ZIPPER LENGTH	DÀI DÂY KÉO GIỮA	FROM ZIPPER TIP TO TIP	TỪ ĐẦU DÂY KÉO ĐẾN ĐUÔI DÂY KÉO	true	Full	1/4 in	26 in	25 in	-1 in	25 1/2 in	INCREASE	
FRONT NECK DROP	HẠ CỘ TRƯỚC	FROM HPS LEVEL STRAIGHT DOWN TO CF NECK SEAM	ĐỈNH VAI HẠ THẲNG ĐẾN ĐƯỜNG MAY CỘ TRƯỚC	true	Full	1/8 in	4 1/4 in	4 1/2 in	1/4 in	4 1/2 in	KEEP	
BACK NECK DROP	HẠ CỘ SAU	FROM HPS LEVEL STRAIGHT DOWN TO CB NECK SEAM	ĐỈNH VAI HẠ THẲNG ĐẾN ĐƯỜNG MAY CỘ SAU	true	Full	1/8 in	5/8 in	1/2 in	-1/8 in	3/4 in	INCREASE BY 1/4"	
BACK NECK WIDTH	RỘNG CỘ SAU	FROM SEAM TO SEAM AT BACK PANEL	TỪ ĐƯỜNG MAY ĐẾN ĐƯỜNG MAY, TẠI BẢN THÀNH PHẪM SAU	true	Full	1/4 in	7 1/4 in	6 3/4 in	-1/2 in	7 1/4 in	INCREASE BACK TO SPEC	
SHOULDER SLOPE	XUÔI VAI	FROM HPS LEVEL STRAIGHT DOWN TO TOP OF ARMHOLE SM	TỪ ĐỈNH VAI HẠ THẲNG ĐẾN ĐỈNH ĐƯỜNG MAY NÁCH	true	Full	1/8 in	2 1/4 in	2 1/4 in	0 in	2 1/4 in		
SHOULDER SEAM FORWARD	CHỖM VAI	FROM HPS TO SHOULDER SEAM AT NECK	TỪ ĐỈNH VAI ĐẾN ĐƯỜNG MAY VAI TẠI CỘ	false	Full	1/8 in	7/8 in	1 in	1/8 in	7/8 in		
ACROSS SHOULDER	NGANG VAI	FROM ARMHOLE SEAM TO SEAM AT BACK PANEL	TỪ ĐƯỜNG MAY NÁCH ĐẾN ĐƯỜNG MAY BẢN THÀNH PHẪM SAU	true	Full	1/4 in	19 3/4 in	19 3/4 in	0 in	21 in	INCREASE	
ACROSS FRONT	NGANG THÂN TRƯỚC	FROM ARMHOLE SEAM TO SEAM, 7" BELOW HPS	7" TỪ ĐỈNH VAI - ĐƯỜNG MAY ĐẾN ĐƯỜNG MAY NÁCH	true	Full	1/4 in	17 1/4 in	17 3/8 in	1/8 in	19 in	INCREASE	
ACROSS BACK	NGANG THÂN SAU	FROM ARMHOLE SEAM TO SEAM, 7" BELOW HPS	7" TỪ ĐỈNH VAI - ĐƯỜNG MAY ĐẾN ĐƯỜNG MAY NÁCH	true	Full	1/4 in	18 3/4 in	18 3/4 in	0 in	19 3/4 in	INCREASE	
CHEST CIRCUMFERENCE	RỘNG NGỰC (ĐO NGUYÊN VÒNG)	MEASURE 1" BELOW ARMHOLE	1" DƯỚI NÁCH	true	Full	1/2 in	48 in	47 1/2 in	-1/2 in	49 in	INCREASE	
BOTTOM OPENING CIRCUMFERENCE, STRETCHED	RỘNG LẠI ÁO NGUYÊN VÒNG, ĐO CĂNG	MEASURE AT BOTTOM HEM SEAM, STRETCHED	TẠI MÉP LAI, ĐO CĂNG	true	Full	1/2 in	46 in	46 in	0 in	47 in	INCREASE	
ARMHOLE DROP	HẠ NÁCH	FROM HPS LEVEL STRAIGHT DOWN TO UNDERARM SEAM	TỪ ĐỈNH VAI HẠ THẲNG ĐẾN ĐƯỜNG MAY DƯỚI NÁCH	true	Full	1/4 in	12 1/4 in	12 in	-1/4 in	12 1/2 in	INCREASE	
BICEP CIRCUMFERENCE	BÁP TAY ĐO NGUYÊN VÒNG	MEASURE AT 1" BELOW ARMHOLE	1" DƯỚI NÁCH	true	Full	1/4 in	18 3/4 in	19 in	1/4 in	19 1/2 in	INCREASE	
FOREARM CIRCUMFERENCE	CĂNG TAY NGUYÊN VÒNG	MEASURE AT 9" ABOVE SLEEVE HEM EDGE	9" LÊN TỪ MÉP CỬA TAY	true	Full	1/4 in	15 in	15 1/4 in	1/4 in	15 1/2 in	INCREASE	
SLEEVE OPENING CIRCUMFERENCE, STRETCHED	RỘNG LẠI TAY NGUYÊN VÒNG, ĐO CĂNG	MEASURE AT SLEEVE EDGE	TẠI MÉP LẠI TAY	true	Full	1/4 in	12 1/2 in	12 1/2 in	0 in	12 1/2 in	KEEP	
SLEEVE OPENING CIRCUMFERENCE, RELAXED	RỘNG LẠI TAY NGUYÊN VÒNG, ĐO ỄM			true	Full	1/4 in	9 in	9 in	0 in	9 in	KEEP	
SLEEVE LENGTH	DÀI TAY ÁO	3PT MEAS. FROM CB NECK, ARMHOLE TO SLEEVE HEM EDGE	3 ĐIỂM TỪ GIỮA CỘ SAU ĐẾN ĐIỂM NÁCH ĐẾN MÉP TAY	true	Full	1/2 in	35 1/2 in	34 3/4 in	-3/4 in	35 1/2 in	BTS	
SLEEVE HEM HEIGHT	TỌ BẢN TAY ÁO			false	Full	1/8 in	1 5/8 in	1 5/8 in	0 in	1 5/8 in		
COLLAR HEIGHT AT CF	CAO LÃ CỘ TẠI GIỮA TRƯỚC			false	Full	1/8 in	3 1/2 in	3 1/4 in	-1/4 in	3 1/2 in	BTS	

COLLAR HEIGHT AT CB	CAO LÁ CỎ TẠI GIỮA SAU			false	Full	1/8 in	1 5/8 in	1 3/4 in	1/8 in	2 1/4 in	INCREASE BY 1/2"
COLLAR LENGTH ALONG OUTER EDGE	DÀI LÁ CỎ DỌC MÉP			false	Full	1/4 in	20 in	20 in	0 in	21 in	INCREASE/ADJUST
COLLAR DRAWCORD LENGTH, TOTAL	DÀI TỔNG DÂY LUỒN			false	Full	1/2 in	32 in	32 in	0 in	35 in	INCREASE
POCKET POSITION ABOVE BOTTOM HEM EDGE	VỊ TRÍ TÚI TRÊN MÉP LẠI	MEASURE AT SIDE BY SIDE SEAM		false	Full	1/8 in	3 1/2 in	3 5/8 in	1/8 in	3 7/8 in	RAISE BY 1/4"
POCKET POSITION FROM SIDE SEAM AT TOP EDGE	VỊ TRÍ TÚI TỪ ĐƯỜNG MAY SƯỜN ĐẾN ĐỈNH MÉP			false	Full	1/4 in	5 1/2 in	5 1/4 in	-1/4 in	5 1/2 in	BACK TO SPEC
POCKET POSITION FROM SIDE SEAM AT BOTTOM EDGE	VỊ TRÍ TÚI TỪ ĐƯỜNG MAY SƯỜN ĐẾN MÉP DƯỚI			false	Full	1/4 in	2 1/4 in	2 1/8 in	-1/8 in	2 1/4 in	BACK TO SPEC
POCKET WELT WIDTH	RỘNG CƠI TÚI TRƯỚC			false	Full	1/8 in	5/8 in	5/8 in	0 in	7/8 in	INCREASE BY 1/4"
POCKET WELT LENGTH	DÀI CƠI TÚI TRƯỚC			false	Full	1/4 in	7 in	6 3/4 in	-1/4 in	7 in	
W/R LOGO POSITION BELOW HPS	ĐỊNH VỊ LOGO NGỰC PHẢI DƯỚI ĐỈNH VAI			false	Full	1/8 in	0 in	0 in	0 in	0 in	
W/R LOGO POSITION FROM TRUE CF	ĐỊNH VỊ LOGO NGỰC PHẢI TỪ GIỮA TRƯỚC			false	Full	1/8 in	0 in	0 in	0 in	0 in	
W/L LOGO POSITION BELOW HPS	ĐỊNH VỊ LOGO NGỰC TRÁI DƯỚI ĐỈNH VAI			false	Full	1/8 in	0 in	0 in	0 in	0 in	
W/L LOGO POSITION FROM TRUE CF	ĐỊNH VỊ LOGO NGỰC TRÁI TỪ GIỮA TRƯỚC			false	Full	1/8 in	0 in	0 in	0 in	0 in	
CB ARTWORK FROM CB NECK SEAM	ĐỊNH VỊ ARTWORK GIỮA THÂN SAU TỪ ĐƯỜNG MAY GIỮA CỎ SAU			false	Full	1/16 in	0 in	0 in	0 in	0 in	