

Porsche Nylon Track Pant

Name Porsche Nylon Track Pant

Style No. FW25WP039

Division Mens

Category Pants

Season Fall/Winter

Year 2025

Size Scale **M** -Sample size

**XS** **S** **M** **L** **XL** **XXL**

Style Status Development

Factory UN-AVAILABLE

Designer Name Quinton

Created by/Author 3/5/2025

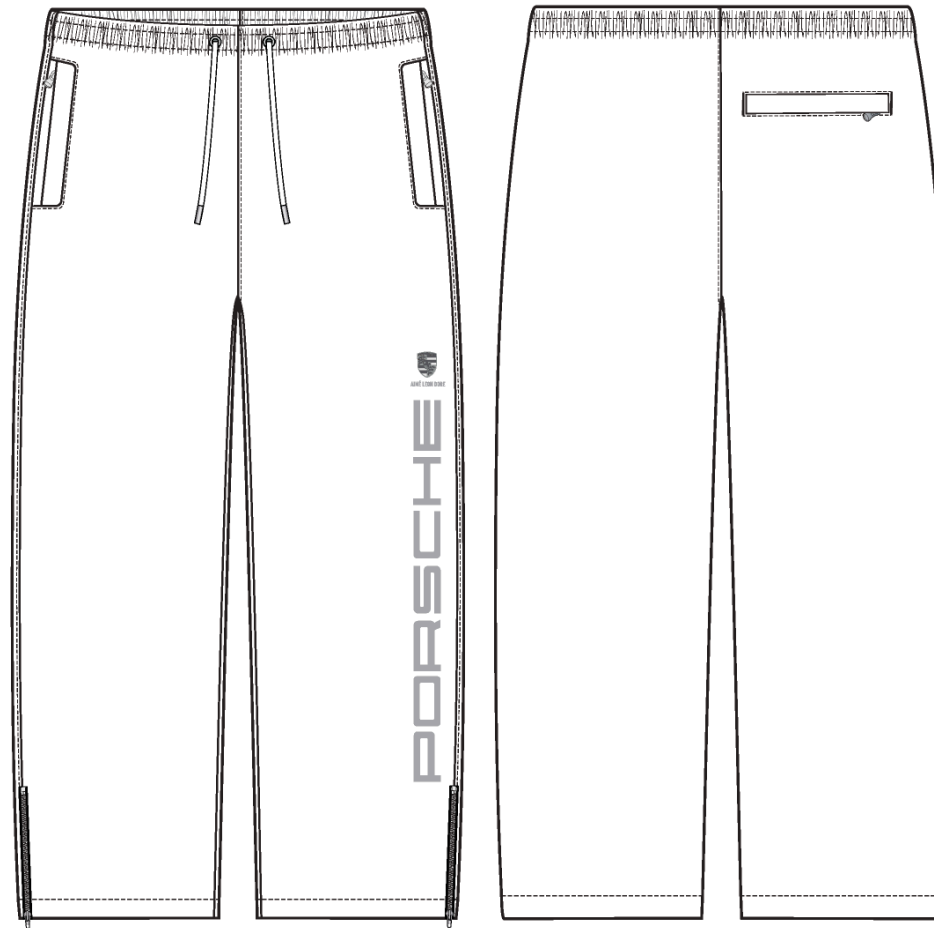
Cristina Loukopoulos  
cristina@aimeleondore.com



1. ● Jet Black 19-0303 TCX  
Int. Code: Not Set  
Ext. Code: Not Set



2. ● Tango Red 19-1761 TCX  
Int. Code: Not Set  
Ext. Code: Not Set



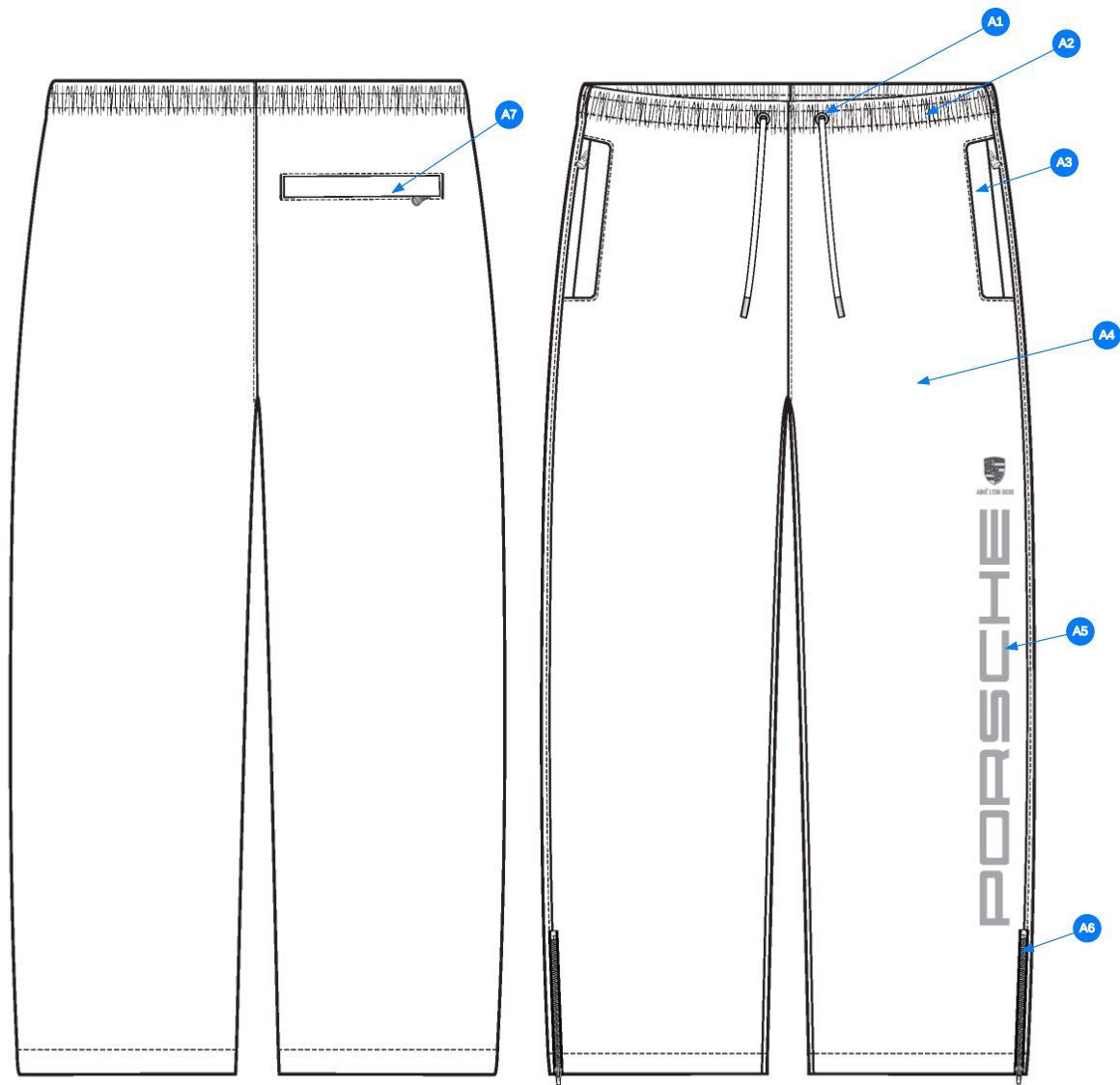
1\_B+W-1



JET BLACK

TANGO RED

2\_CLR-1

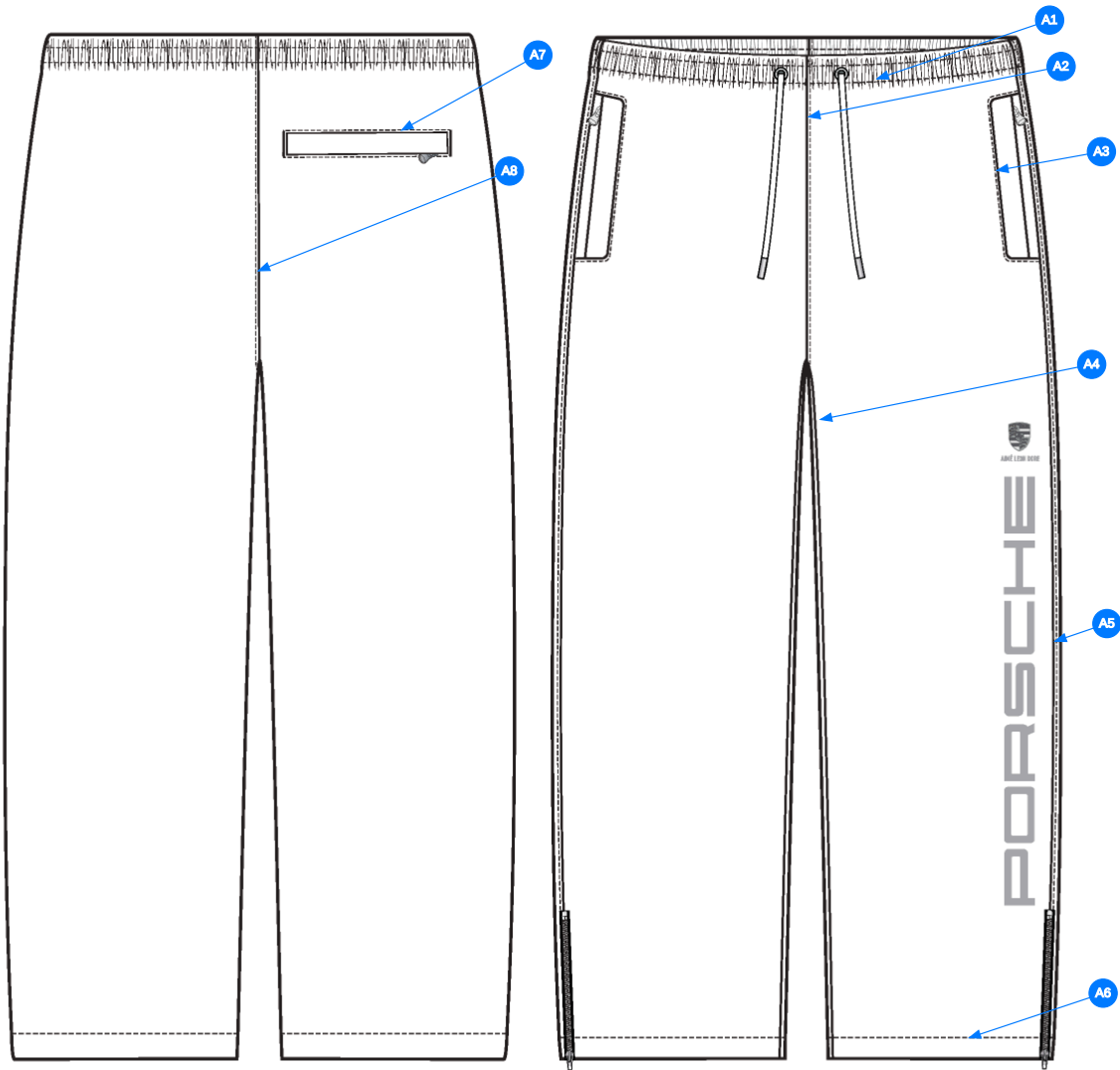


Comments (7)

- A1** EXTERIOR DRAWCORDS w/ EMBROIDERED EYELETS @ CF WAISTBAND - SEE CALLOUT PAGE FOR DETAILS
- A2** GROWN-ON ELASTICATED WAISTBAND CONSTRUCTION
- A3** SET-IN SIDE POCKETS w/ ZIPPERS - SEE CALLOUT PAGE FOR DETAILS
- A4** INTERIOR MESH LINING AND FRONT AND BACK LEGS
- A5** ARTWORK @ WEARER'S LEFT FRONT FLANGE - SEE CALLOUT PAGE FOR DETAILS
- A6** ZIPPERS @ LOWER SIDE SEAM - SEE CALLOUT PAGE FOR DETAILS
- A7** SET-IN SINGLE WELT POCKET w/ ZIPPER - SEE CALLOUT PAGE FOR DETAILS

1. dây luồn với thùy khuy tại giữa lưng quần
2. cấu trúc quần lưng liền
3. túi dây kéo tại sườn
4. lớp lót vải lưới bên trong
5. hình thù tại quần trái trước
6. dây kéo tại sườn dưới lai
7. cơi túi sau dây kéo

3\_CONSTRUCTION DETAILS\_02-1

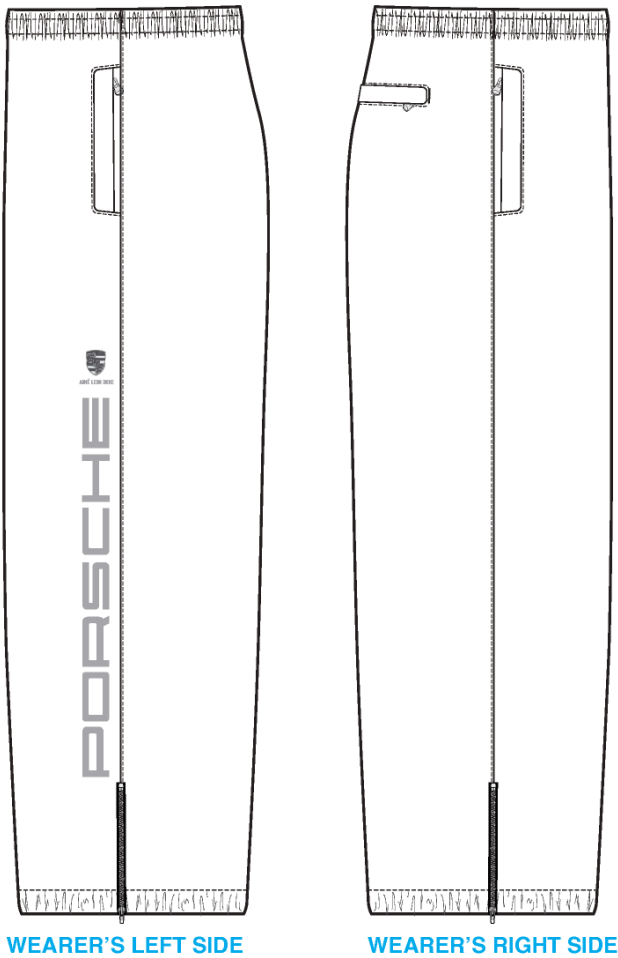


Comments (8)

- A1 SN TS @ ELASTICATED WAISTBAND
- A2 EDGESTITCH @ CF
- A3 EDGESTITCH @ SIDE POCKETS - SEE CALLOUT PAGE FOR DETAILS
- A4 EDGESTITCH @ INSEAMS
- A5 EDGESTITCH @ OUTSEAM
- A6 1" SN TS @ HEM
- A7 EDGESTITCH @ BACK POCKET - SEE CALLOUT PAGE FOR DETAILS
- A8 EDGESTITCH @ BACK RISE

- 1. điều 1 kim tại thun lưng quần
- 2. mí điều tại giữa trước
- 3. mí điều tại túi sườn
- 4. mí điều tại sườn trong
- 5. mí điều tại sườn ngoài
- 6. điều 1 kim 1" tại lai
- 7. mí điều tại túi sau
- 8. mí điều tại đáy sau

4\_STITCHING DETAILS\_02-1



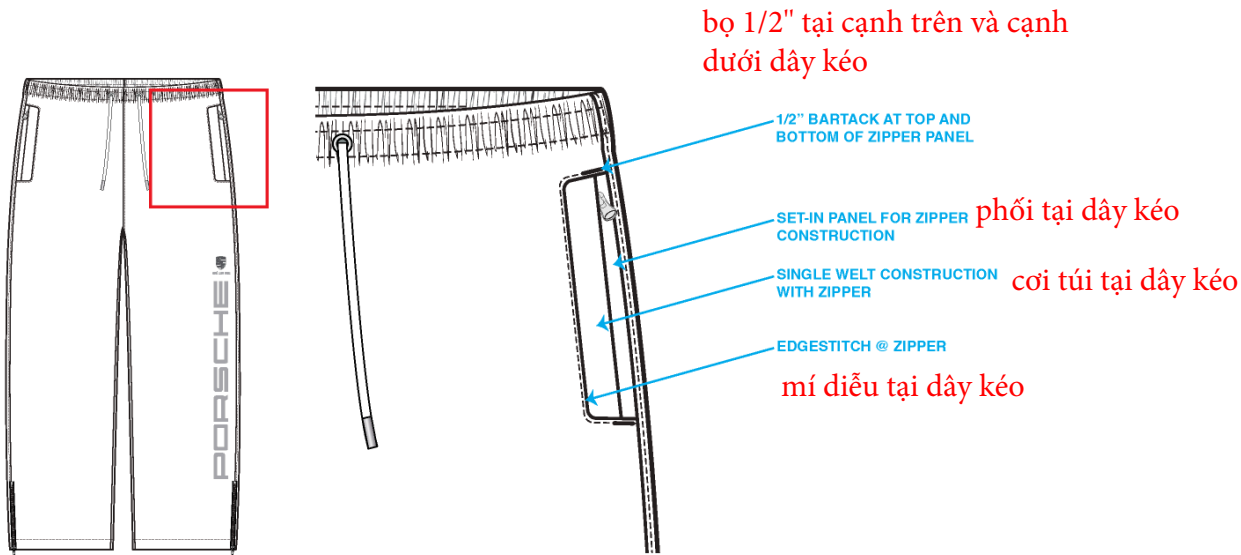
sườn trái

sườn phải

5\_SIDE VIEW\_02-1

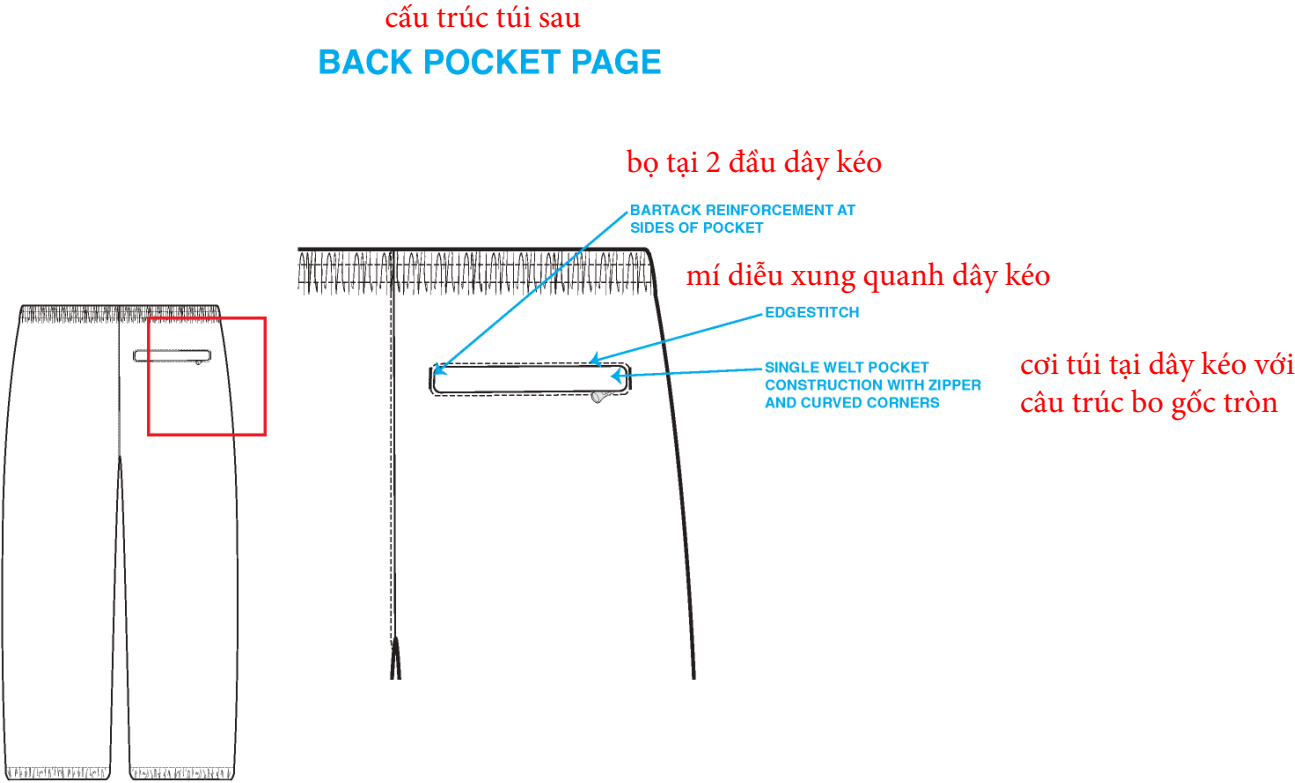
cấu trúc túi trước

FRONT POCKET PAGE



9\_FRONT POCKET CALLOUT PAGE\_02-1





10\_BACK POCKET CALLOUT PAGE-1

Sample Size: M

POINT OF MEASURE	CODE	HOW TO MEASURE	CRITICAL	TYPE	TOLERANCE	M
WAISTBAND TOPSTITCHING HEIGHT, TOTAL	WV		false	Full	1/8 in	1 1/2 in
WAIST CIRCUMFERENCE - RELAXED	WV102	ACROSS TOP EDGE OF WAISTBAND	true	Full	1/2 in	31 1/2 in
WAIST CIRCUMFERENCE - STRETCHED	WV103	ACROSS THE CENTER OF WAISTBAND	true	Full	1/2 in	40 in
FRONT RISE FROM CROTCH SM TO TOP EDGE	WV105	FROM FRONT CROTCH SEAM TO TOP EDGE OF FRONT WAISTBAND	true	Full	1/4 in	12 1/2 in
BACK RISE FROM CROTCH SM TO TOP EDGE	WV106	FROM BACK CROTCH SEAM TO TOP EDGE OF BACK WAISTBAND	true	Full	1/4 in	17 in
LOW HIP POSITION BELOW WB TOP EDGE	WV107	MEAS. X" DOWN FROM TOP EDGE OF WAISTBAND	true	Full	0 in	8 in
LOW HIP CIRCUMFERENCE	WV108	3PT MEAS. - FROM WR SIDE SEAM, CF, TO WL SIDE SEAM	true	Full	1/2 in	44 3/4 in
THIGH CIRC. AT 1" BELOW CROTCH SM	WV109	MEAS. AT 1" BELOW CROTCH, ACROSS TO SIDE SEAM	true	Full	1/2 in	28 in
KNEE CIRC. AT 13" BELOW CROTCH SM	wv	MEAS. AT 13" BELOW CROTCH, ACROSS TO SIDE SEAM	true	Full	1/2 in	22 1/2 in
LEG OPENING CIRC. AT BOTTOM EDGE	WV111	MEASURE AT LEG EDGE	true	Full	1/4 in	20 1/4 in
INSEAM	WV112	MEAS. ALONG THE INSEAM FROM CF CROTCH SEAM TO LEG EDGE	true	Full	1/2 in	30 in
LEG ZIPPER LENGTH	WV		false	Full	1/4 in	8 1/2 in
FRONT POCKET PLACEMENT BELOW WAISTBAND TOPSTITCHING	WV		false	Full	1/4 in	1 1/4 in
FRONT POCKET OPENING LENGTH	WV FRONT POCKET	MEASURE ALONG SIDE SEAM FROM WB SEAM	false	Full	1/4 in	7 in
FRONT POCKET ZIPPER LENGTH	WV		false	Full	1/4 in	6 3/4 in
FRONT POCKET WELT WIDTH	WV		false	Full	1/8 in	3/4 in
FRONT POCKET BAG LENGTH	WV121	MEAS. FROM SEAM TO POCKET BAG EDGE – FACTORY GRADE FOR PRODUCTION	false	Full	1/4 in	11 in
FRONT POCKET BAG WIDTH	WV122	MEASURE FROM SEAM TO WIDEST EDGE – FACTORY GRADE FOR PRODUCTION	false	Full	1/4 in	8 in
BACK POCKET PLACEMENT FROM CB SEAM	WV124	FROM CB TO EDGE OF POCKET CLOSEST TO CB	false	Full	1/8 in	2 3/8 in
BACK POCKET POSITION BELOW WAISTBAND SEAM AT SIDE BY SIDE SEAM	WV		false	Full	1/8 in	2 in
BACK POCKET POSITION BELOW WAISTBAND SEAM AT SIDE BY CB	WV		false	Full	1/8 in	2 1/4 in
BACK POCKET OPENING LENGTH	WV127		false	Full	1/4 in	5 3/4 in
BACK POCKET ZIPPER LENGTH	WV		false	Full	1/4 in	5 1/2 in
BACK POCKET WELT HEIGHT	WV		false	Full	1/8 in	3/4 in
BACK POCKET BAG LENGTH	WV	FROM SEAM TO EDGE	false	Full	1/4 in	7 1/2 in
WAIST DRAWCORD LENGTH - TOTAL	WV104		false	Full	1 in	54 in
DRAWCORD EXIT SPACING, RELAXED	WV	MEASURE CENTER TO CENTER	false	Full	1/4 in	1 3/4 in

## Development - 1st Proto Request - Kilsy Morocho



CREATED ON FEB 25, 2025 8:54 PM

Status: Submit 1st Proto

Development Notes:

- 1. Overall fit and construction to follow FW24WP030 Porsche Nylon Pant with new design details as shown in sketch.
- 1. fit và cấu trúc tham khảo FW24WP030 Porsche Nylon Pant với chi tiết cụ thể như sketch

COMPONENT		QTY	1. ● JET BLACK CODE: 19-0303 TCX	2. ● TANGO RED CODE: 19-1761 TCX
1	<b>W3930</b> CODE: W3930 Placement: BODY / POCKET BAGS Supplier: UNAVAILABLE Width: 144 CM Weight: 110GSM Country of Origin: VIETNAM		- ● Jet Black Custom Code: 19-0303 TCX  Price: 0.00	- ● Tango Red Custom Code: 19-1761 TCX  Price: 0.00
2	<b>HMUA23008</b> CODE: HMUA23008 Placement: LINING Supplier: UNAVAILABLE Width: 163 CM Weight: 70gsm Country of Origin: CHINA		- ○ BLACK  Price: 0.00	- ○ BLACK  Price: 0.00
3	<b>ELASTIC</b> CODE: ELASTIC Placement: INTERIOR WB Supplier: Factory Sourced	1	- ○ BLACK WIDTH: 1" Price: 0.00	- ○ WHITE WIDTH: 1" Price: 0.00
4	<b>YKK COIL CLOSED END ZIPPER</b> CODE: TBD Placement: 1 @ EACH POCKET Supplier: YKK Country of Origin: China	3	- YKK COIL CLOSED END ZIPPER SIZE: 5GG Price: 0.00	- YKK COIL CLOSED END ZIPPER SIZE: 5GG Price: 0.00
5	<b>YKK Zipper Tape</b> CODE: YKK Placement: 1 @ EACH POCKET ZIPPER	3	- ○ 580 Custom Code: JET BLACK 19-0303 TCX  Price: 0.00	- ○ 520 Custom Code: MERLOT  Price: 0.00
6	<b>YKK DIN LOGO ZIPPER PULL</b> CODE: DA8AED03 Placement: 1 @ EACH POCKET ZIPPER Supplier: YKK	3	- ○ SHINY NICKEL Custom Code: C5  Price: 0.00	- ○ SHINY NICKEL Custom Code: C5  Price: 0.00
7	<b>ROUND POLY DRAWCORD - UA</b> CODE: ROUND POLY DRAWCORD - UA Placement: INTERIOR WB Supplier: UNAVAILABLE Country of Origin: VIETNAM	1	- ● Jet Black Custom Code: 19-0303 TCX Size: 1/4" Price: 0.00	- ● Tango Red Custom Code: 19-1761 TCX Size: 1/4" Price: 0.00
8	<b>METAL AGLET</b> CODE: TBD Placement: DRAWCORD ENDS Supplier: Factory Sourced	2	- ○ OXIDIZE BRONZE  Price: 0.00	- ○ OXIDIZE BRONZE  Price: 0.00
9	<b>METAL EYELET - UA</b> CODE: #ME-001 Placement: DRAWCORD EXITS Supplier: UNAVAILABLE Country of Origin: VIETNAM	2	- ○ OXIDIZE BRONZE SIZE: Undefined Price: 0.00	- ○ OXIDIZE BRONZE SIZE: Undefined Price: 0.00
10	<b>YKK COIL CLOSED END ZIPPER</b> CODE: TBD Placement: 1 @ EACH LOWER SIDE SEAM Supplier: YKK Country of Origin: China	1	- YKK COIL CLOSED END ZIPPER SIZE: 5GG Price: 0.00	- YKK COIL CLOSED END ZIPPER SIZE: 5GG Price: 0.00
11	<b>YKK Zipper Tape</b> CODE: YKK Placement: 1 @ EACH LOWER SIDE SEAM	1	- ○ 580 Custom Code: JET BLACK 19-0303 TCX  Price: 0.00	- ○ 520 Custom Code: MERLOT  Price: 0.00
12	<b>YKK GSN8 Zipper Slider</b> CODE: GSN8 Placement: 1 @ EACH LOWER SIDE SEAM Supplier: YKK	1	- ○ SILVER - C5  Price: 0.00	- ○ SILVER - C5  Price: 0.00

COMPONENT		QTY	1.  JET BLACK CODE: 19-0303 TCX	2.  TANGO RED CODE: 19-1761 TCX
13	<b>ARTWORK</b> CODE: EMBROIDERY Placement: @ WEARERS LEFT LEG Notes: 13"H PORSCHE LOGO (FOLLOW A/W + POM) Supplier: Factory Sourced		Not used	Not used
14	<b>ARTWORK</b> CODE: EMBROIDERY Placement: @ WEARERS LEFT LEG Notes: 1.75" W PORSCHE CREST (FOLLOW A/W + POM) Supplier: Factory Sourced		Not used	Not used
LABEL + TRIM PACKAGE				
15	<b>ALD X Porsche Shirt Label</b> CODE: 2024050128 Placement: FOLLOW LABEL + PACKAGING GUIDE Supplier: Shining	1 Piece	Not used Options: Opt. 1 (Script)	Not used Options: Opt. 1 (Script)
16	<b>FW24 Porsche Poly Bag 15" X 18" (Large)</b> CODE: ALD-PB149-R Placement: FOLLOW LABEL + PACKAGING GUIDE Supplier: Colonial	1 M	Not used	Not used
17	<b>FW25 Porsche Hangtag</b> CODE: ALD-T37P-B Placement: FOLLOW LABEL + PACKAGING GUIDE Supplier: Colonial	1 M	Not used	Not used
18	<b>ALD Woven Care + Content + COO Label</b> CODE: ALD-COO-XXX Placement: FOLLOW LABEL + PACKAGING GUIDE Supplier: Colonial Country of Origin: CHINA	1 Piece	Not used	Not used
19	<b>UPC Sticker</b> CODE: UPC Placement: FOLLOW LABEL + PACKAGING GUIDE Supplier: Factory Sourced	1	Not used	Not used
Components 19		Total 0.00		Total 0.00