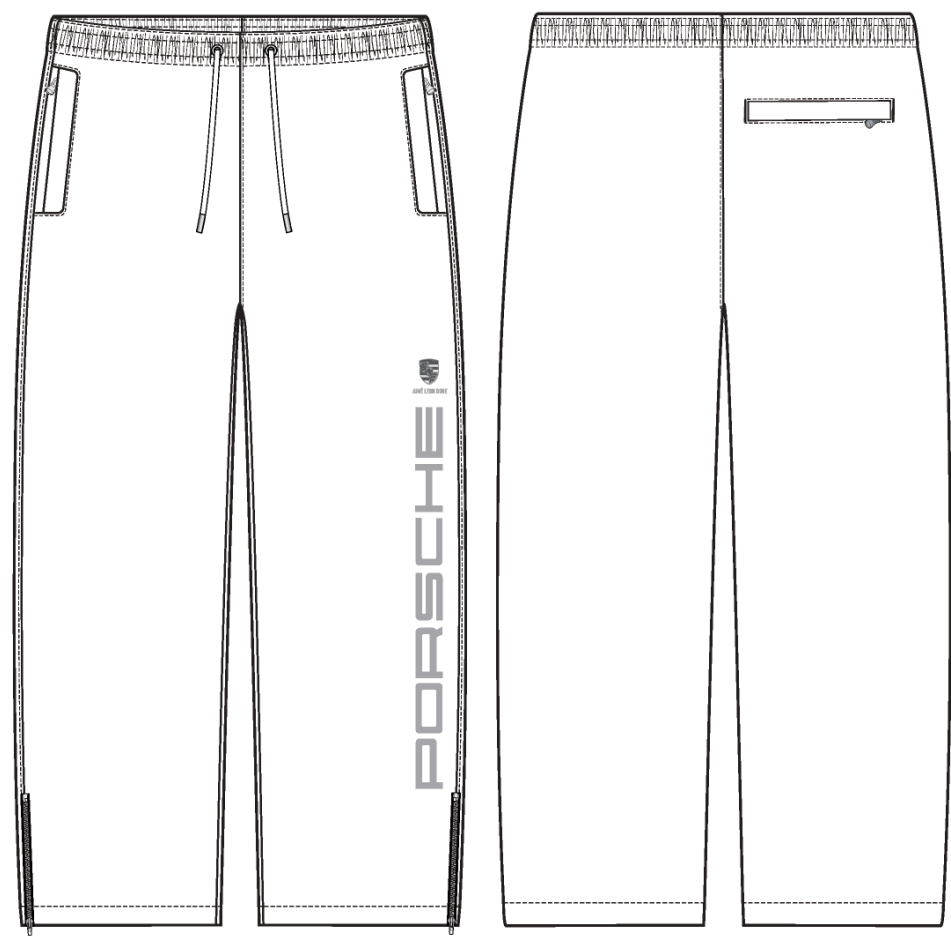
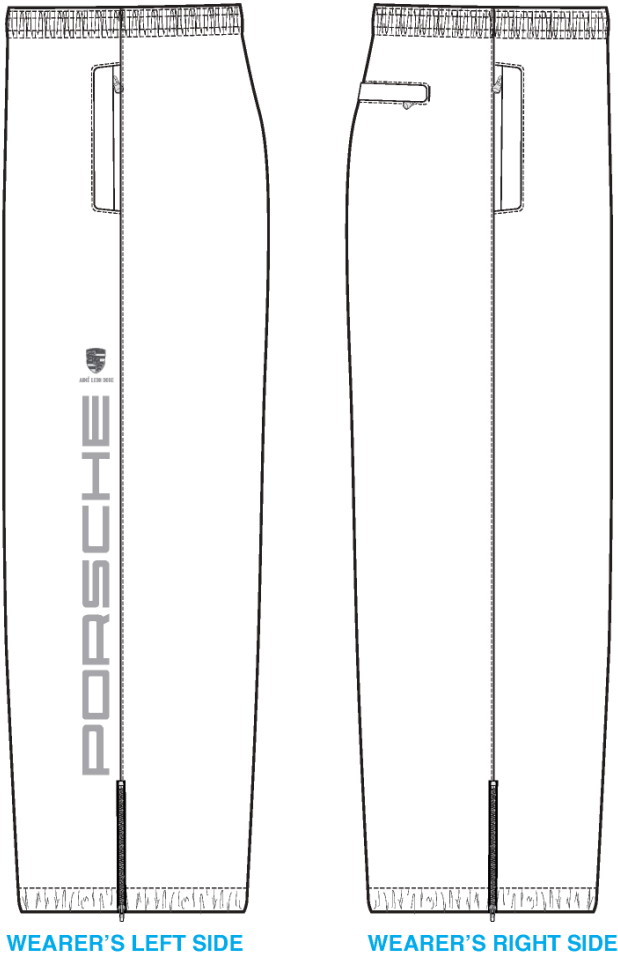


Porsche Nylon Track Pant

Name	Porsche Nylon Track Pant
Style No.	FW25WP039
Division	Mens
Category	Pants
Season	Fall/Winter
Year	2025
Size Scale	<div>M</div> -Sample size
	<div>XS</div> <div>S</div> <div>M</div> <div>L</div> <div>XL</div> <div>XXL</div>
Style Status	Development
Factory	UN-AVAILABLE
Designer Name	Quinton
Created by/Author	4/11/2025
	Kilsy Morocho
	kilsy.morocho@aimeleondore.com



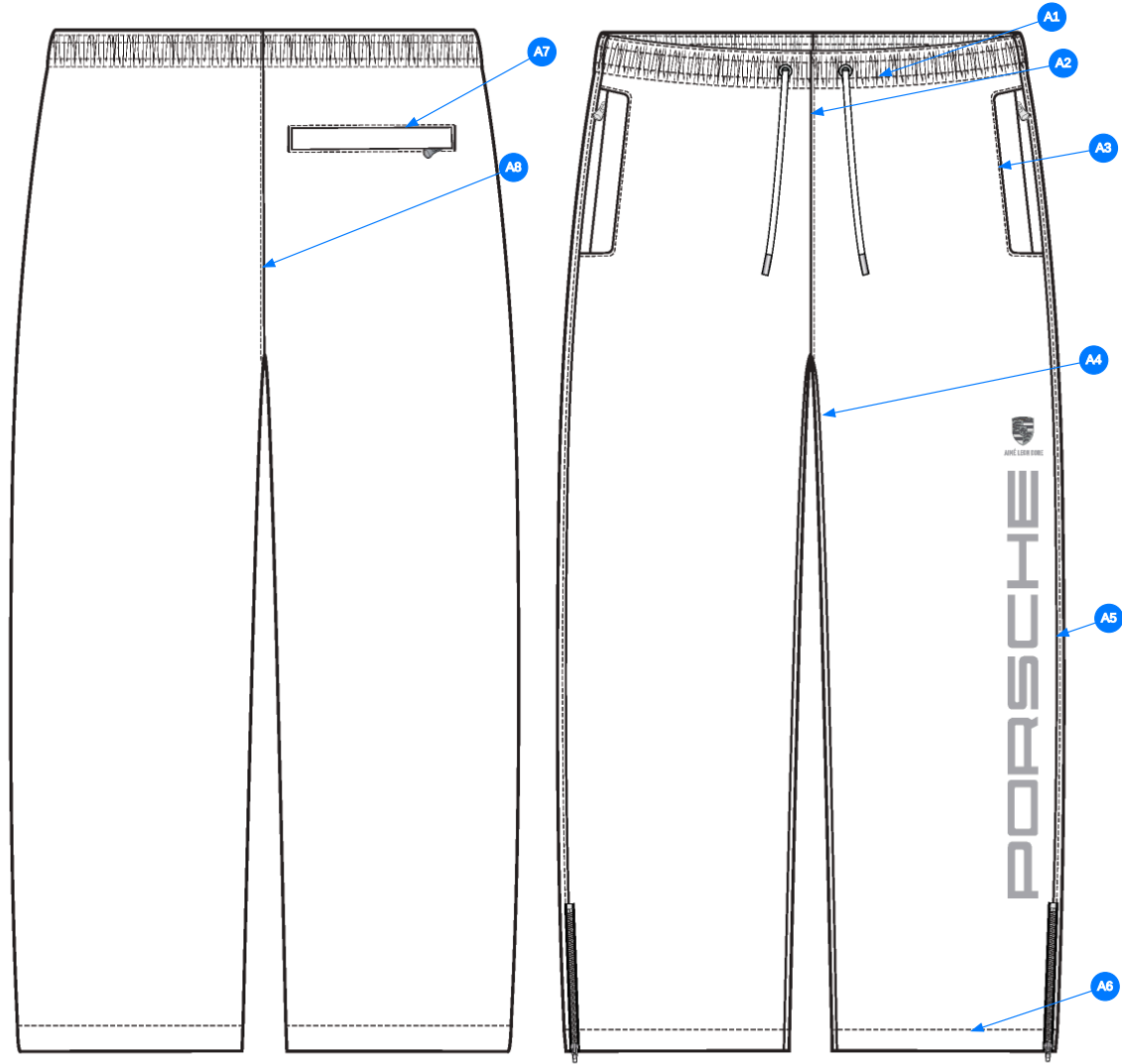
1\_B+W\_04-1



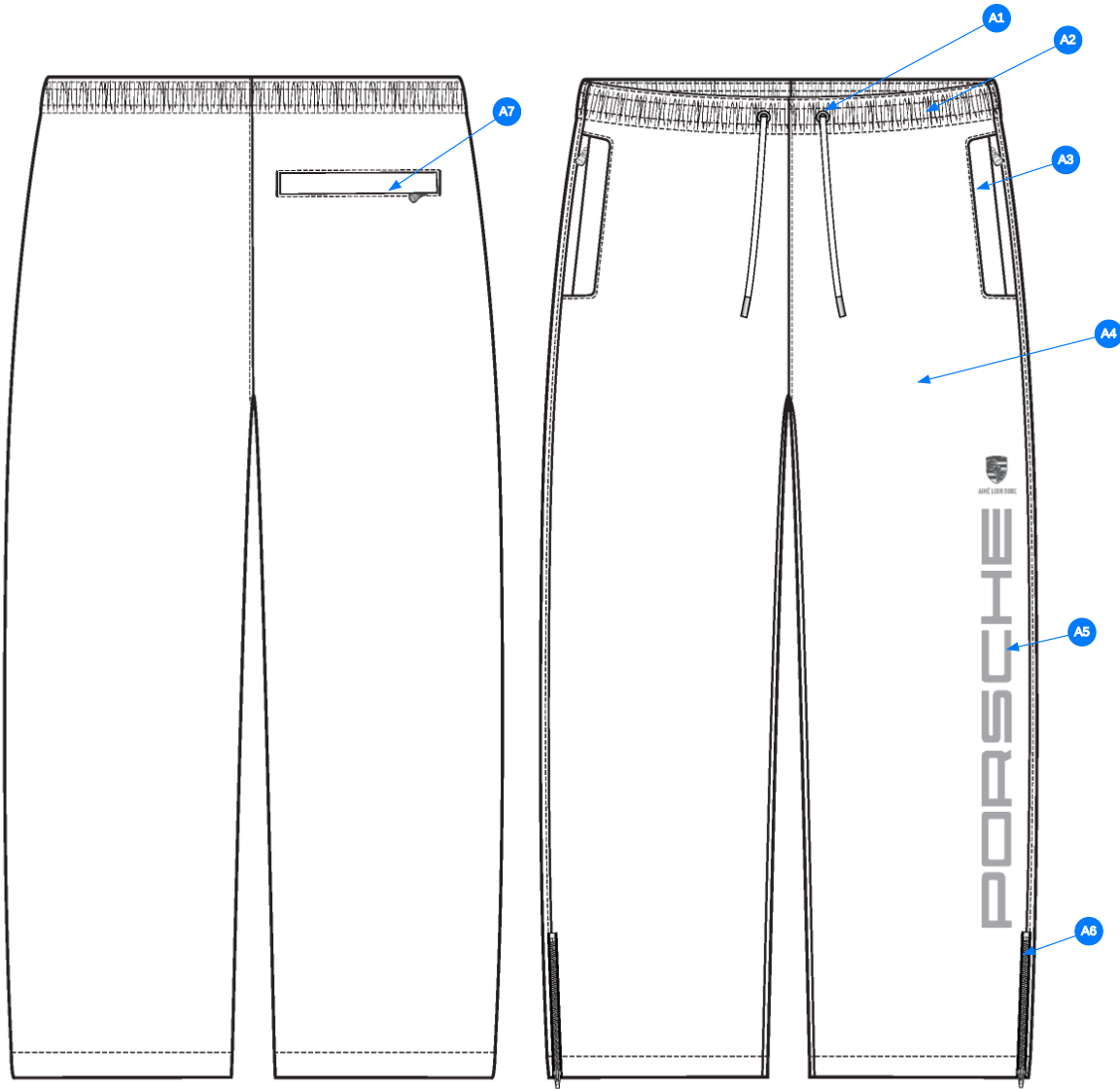
5\_SIDE VIEW\_04-1

Comments (8)

- A1 SN TS @ ELASTICATED WAISTBAND
- A2 EDGESTITCH @ CF
- A3 EDGESTITCH @ SIDE POCKETS - SEE CALLOUT PAGE FOR DETAILS
- A4 EDGESTITCH @ INSEAMS
- A5 EDGESTITCH @ OUTSEAM
- A6 1" SN TS @ HEM
- A7 EDGESTITCH @ BACK POCKET - SEE CALLOUT PAGE FOR DETAILS
- A8 EDGESTITCH @ BACK RISE



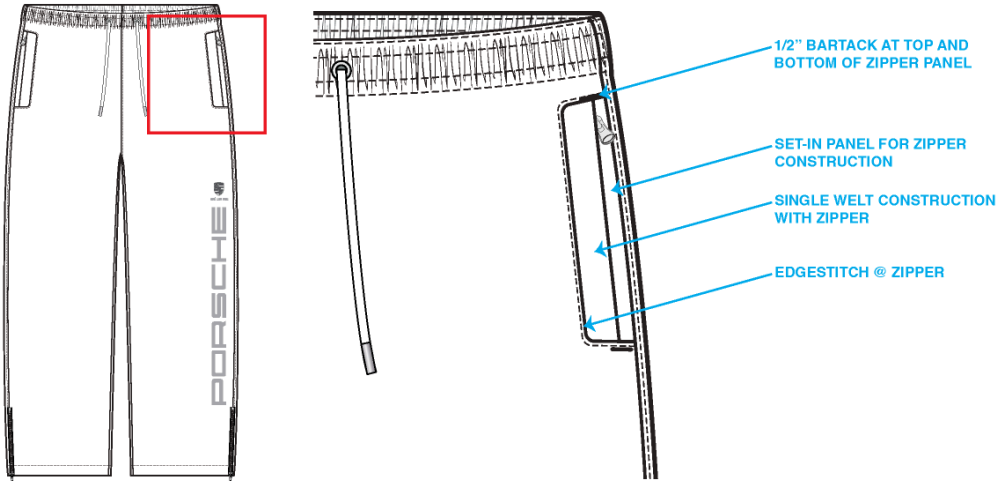
4\_STITCHING DETAILS\_04-1



- Comments (7)
- A1 EXTERIOR DRAWCORDS w/ EMBROIDERED EYELETS @ CF WAISTBAND - SEE CALLOUT PAGE FOR DETAILS
  - A2 GROWN-ON ELASTICATED WAISTBAND CONSTRUCTION
  - A3 SET-IN SIDE POCKETS w/ ZIPPERS - SEE CALLOUT PAGE FOR DETAILS
  - A4 INTERIOR MESH LINING AND FRONT AND BACK LEGS
  - A5 ARTWORK @ WEARER'S LEFT FRONT FLANGE - SEE CALLOUT PAGE FOR DETAILS
  - A6 ZIPPERS @ LOWER SIDE SEAM - SEE CALLOUT PAGE FOR DETAILS
  - A7 SET-IN SINGLE WELT POCKET w/ ZIPPER - SEE CALLOUT PAGE FOR DETAILS

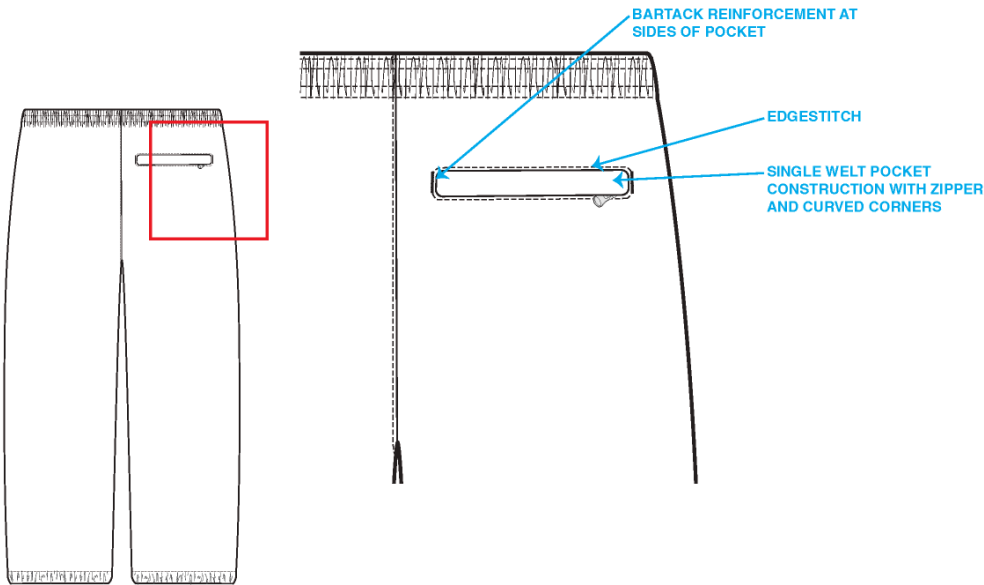
3\_CONSTRUCTION DETAILS\_04-1

FRONT POCKET PAGE



9\_FRONT POCKET CALLOUT PAGE\_04-1

BACK POCKET PAGE



10\_BACK POCKET CALLOUT PAGE\_04-1

Measured Size: M

POINT OF MEASURE	CODE	HOW TO MEASURE	CRITICAL	TYP E	TOLERANCE	EXPECTED	1ST PROTO/1ST FIT - RCVD	VARIANCE	ADJUST BY +/-	REVISED SPEC	MEASUREMENT NOTES
WAISTBAND TOPSTITCHING HEIGHT, TOTAL	WV		false	Full	1/8 in	1 1/2 in	1 3/8 in	-1/8 in	0 in	1 1/2 in	
WAIST CIRCUMFERENCE - RELAXED	WV102	ACROSS TOP EDGE OF WAISTBAND	true	Full	1/2 in	31 1/2 in	32 in	1/2 in	0 in	31 1/2 in	
WAIST CIRCUMFERENCE - STRETCHED	WV103	ACROSS THE CENTER OF WAISTBAND	true	Full	1/2 in	40 in	40 in	0 in	0 in	40 in	
FRONT RISE FROM CROTCH SM TO TOP EDGE	WV105	FROM FRONT CROTCH SEAM TO TOP EDGE OF FRONT WAISTBAND	true	Full	1/4 in	12 1/2 in	12 in	-1/2 in	0 in	12 1/2 in	MUST INCREASE BACK TO SPEC
BACK RISE FROM CROTCH SM TO TOP EDGE	WV106	FROM BACK CROTCH SEAM TO TOP EDGE OF BACK WAISTBAND	true	Full	1/4 in	17 in	16 1/2 in	-1/2 in	0 in	17 in	MUST INCREASE BACK TO SPEC
LOW HIP POSITION BELOW WB TOP EDGE	WV107	MEAS. X" DOWN FROM TOP EDGE OF WAISTBAND	true	Full	0 in	8 in	8 in	0 in	0 in	8 in	
LOW HIP CIRCUMFERENCE	WV108	3PT MEAS. - FROM WR SIDE SEAM, CF, TO WL SIDE SEAM	true	Full	1/2 in	44 3/4 in	44 3/4 in	0 in	0 in	44 3/4 in	
THIGH CIRC. AT 1" BELOW CROTCH SM	WV109	MEAS. AT 1" BELOW CROTCH, ACROSS TO SIDE SEAM	true	Full	1/2 in	28 in	28 in	0 in	0 in	28 in	
KNEE CIRC. AT 13" BELOW CROTCH SM	wv	MEAS. AT 13" BELOW CROTCH, ACROSS TO SIDE SEAM	true	Full	1/2 in	22 1/2 in	23 in	1/2 in	0 in	22 1/2 in	
LEG OPENING CIRC. AT BOTTOM EDGE	WV111	MEASURE AT LEG EDGE	true	Full	1/4 in	20 1/4 in	20 in	-1/4 in	0 in	20 1/4 in	
INSEAM	WV112	MEAS. ALONG THE INSEAM FROM CF CROTCH SEAM TO LEG EDGE	true	Full	1/2 in	30 in	30 in	0 in	0 in	30 in	
LEG ZIPPER LENGTH	WV		false	Full	1/4 in	8 1/2 in	8 1/2 in	0 in	0 in	8 1/2 in	
FRONT POCKET PLACEMENT BELOW WAISTBAND TOPSTITCHING	WV		false	Full	1/4 in	1 1/4 in	1 1/8 in	-1/8 in	0 in	1 1/4 in	
FRONT POCKET OPENING LENGTH	WV FRONT POCKET	MEASURE ALONG SIDE SEAM FROM WB SEAM	false	Full	1/4 in	7 in	7 in	0 in	0 in	7 in	
FRONT POCKET ZIPPER LENGTH	WV		false	Full	1/4 in	6 3/4 in	6 3/4 in	0 in	0 in	6 3/4 in	
FRONT POCKET WELT WIDTH	WV		false	Full	1/8 in	3/4 in	3/4 in	0 in	0 in	3/4 in	
FRONT POCKET BAG LENGTH	WV121	MEAS. FROM SEAM TO POCKET BAG EDGE – FACTORY GRADE FOR PRODUCTION	false	Full	1/4 in	11 in	11 in	0 in	0 in	11 in	



FRONT POCKET BAG WIDTH	WV122	MEASURE FROM SEAM TO WIDEST EDGE – FACTORY GRADE FOR PRODUCTION	false	Full	1/4 in	8 in	8 in	0 in	0 in	8 in	
BACK POCKET PLACEMENT FROM CB SEAM	WV124	FROM CB TO EDGE OF POCKET CLOSEST TO CB	false	Full	1/8 in	2 3/8 in	2 1/4 in	-1/8 in	-3/8 in	2 in	MOVE 1/4" CLOSER TO CB
BACK POCKET POSITION BELOW WAISTBAND SEAM AT SIDE BY SIDE SEAM	WV		false	Full	1/8 in	2 in	1 7/8 in	-1/8 in	0 in	2 in	
BACK POCKET POSITION BELOW WAISTBAND SEAM AT SIDE BY CB	WV		false	Full	1/8 in	2 1/4 in	2 1/8 in	-1/8 in	0 in	2 1/4 in	
BACK POCKET OPENING LENGTH	WV127		false	Full	1/4 in	5 3/4 in	5 3/4 in	0 in	1/2 in	6 1/4 in	SPEC REVISED FOLLOWING ZIPPER INCREASE
BACK POCKET ZIPPER LENGTH	WV		false	Full	1/4 in	5 1/2 in	5 1/2 in	0 in	1/2 in	6 in	INCREASE BY 1/2"
BACK POCKET WELT HEIGHT	WV		false	Full	1/8 in	3/4 in	3/4 in	0 in	0 in	3/4 in	
BACK POCKET BAG LENGTH	WV	FROM SEAM TO EDGE	false	Full	1/4 in	7 1/2 in	7 1/2 in	0 in	0 in	7 1/2 in	
WAIST DRAWCORD LENGTH - TOTAL	WV104		false	Full	1 in	54 in	53 1/2 in	-1/2 in	0 in	54 in	
DRAWCORD EXIT SPACING, RELAXED	WV	MEASURE CENTER TO CENTER	false	Full	1/4 in	1 3/4 in	1 3/4 in	0 in	0 in	1 3/4 in	

## 1st Proto/1st Fit - Kilsy Morocho

CREATED ON APR 11, 2025 2:09 PM

1ST PROTO/1ST FIT: SIZE:M, ARRIVAL DATE:04-08-2025

Date: 04/11/25

Status: Submit PPS in bulk fabric and trims

TD: Kilsy Morocho

Fit:

1. Overall waist is dipping.
  - a. Front rise measured 1/2" under spec. Please increase back to requested spec by adding to the waist seam.
  - b. Back rise measured 1/2" under spec. Please increase back to requested spec by adding to the waist seam.
2. Back pocket is too small.
  - c. Increase the back pocket zipper length to 6"
  - d. Increase pocket opening length proportionally to 6 1/4"
  - e. Additionally move the back pocket 1/4" closer to CB from sample. See revised spec.
3. Reposition the artwork as shown in photo.
4. Bring all other measurements back to requested spec.

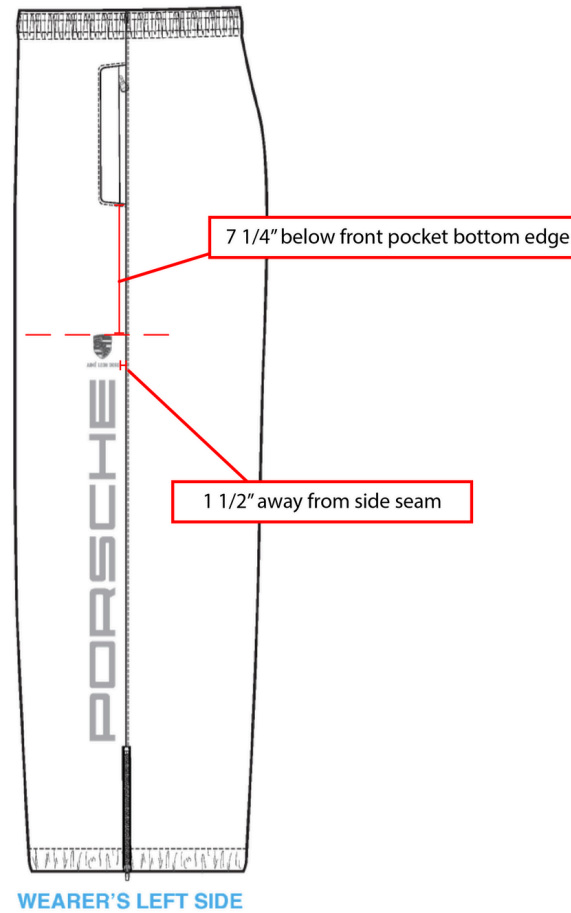
Construction:

1. Bartack the drawcord to the WB at CB.
2. See photo for main label application/sewing.



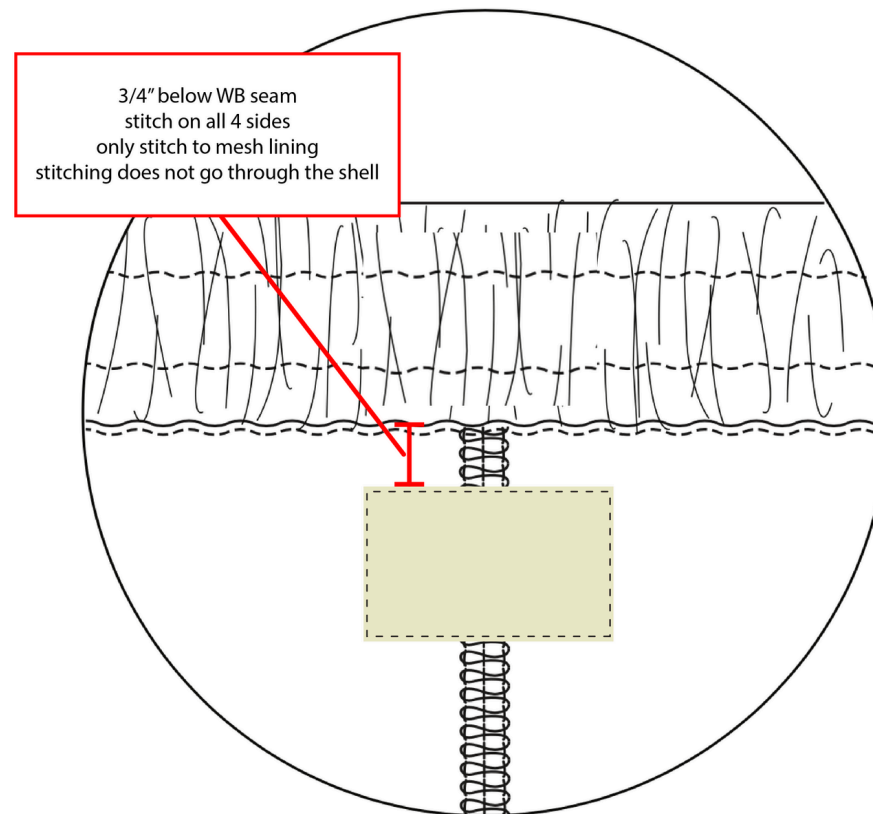
FW25WP039 Porsche Nylon Track Pant.jpg

3. Reposition the artwork as shown in photo.



1\_AW POS.jpg

2. See photo for main label application/sewing.



2\_ML.jpg