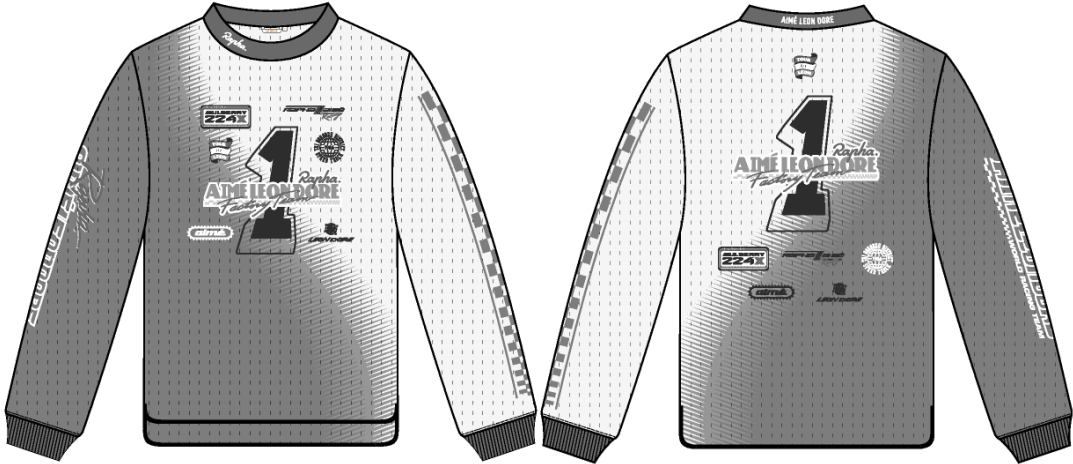


Rapha LS Tee

Name	Rapha LS Tee
Style No.	FW26CT040
Division	Mens
Category	Tees
Season	Fall/Winter
Year	2026
Size Scale	<div>M -Sample size</div> <div><div>XS</div><div>S</div><div>M</div><div>L</div><div>XL</div><div>XXL</div></div>
Style Status	Development
Factory	UN-AVAILABLE
Designer Name	Nils
TD Name	Anastasiya
Created by/Author	10/17/2025 Jeni Fitzgerald jeni.fitzgerald@aimeleondore.com

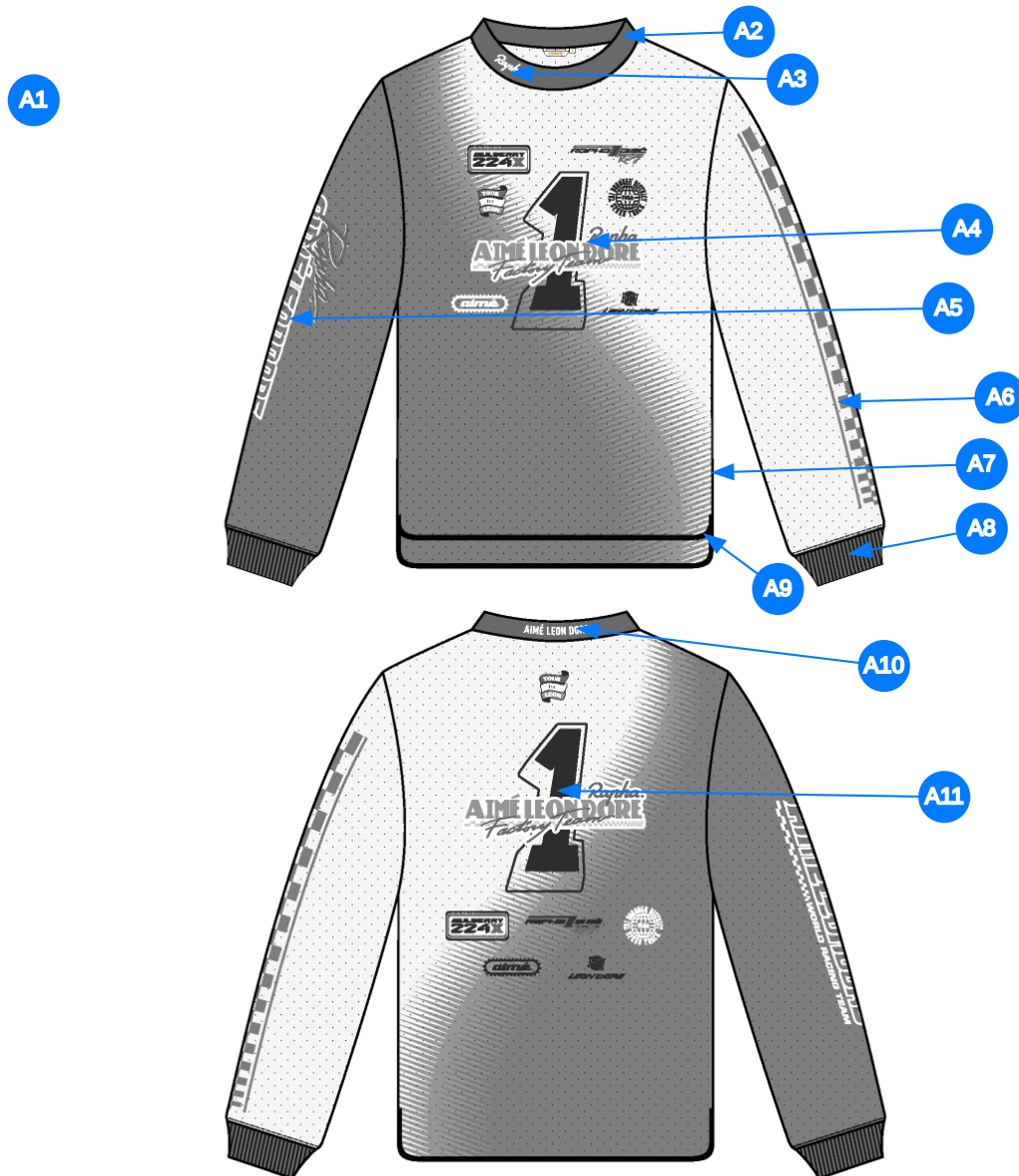


1\_B&W-1



BRIGHT WHITE 11-0601 TCX  
FOREVER BLUE 16-4019 TCX  
GRANADA SKY 16-4033 TCX

2\_CLR-1

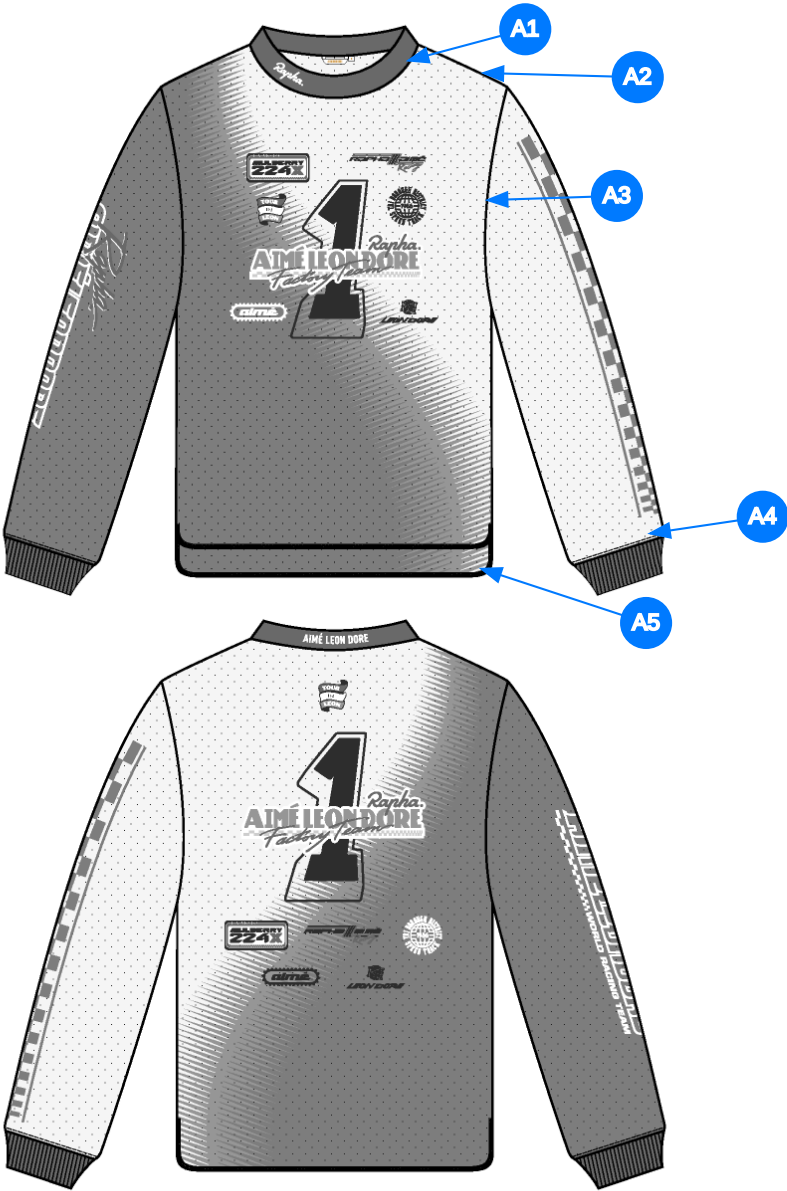


Comments (11)

- A1 FIT: LS MESH TEE (SS24CT049)
- A2 RIB 1X1 DOUBLED MOCKNECK @ NECK - SEE ATTACHMENT FOR REFERENCE
- A3 ARTWORK @ RIGHT COLLAR
- A4 ARTWORK @ CENTER CHEST
- A5 ARTWORK @ RIGHT SLEEVE
- A6 ARTWORK @ LEFT SLEEVE
- A7 ALD WOVEN LABEL @ SIDE SEAM
- A8 1x1 COTTON RIB DOUBLED @ SLEEVE CUFF
- A9 SCOOP @ SIDE SEAM - TURN BACK W/ COVERLOCK STITCH
- A10 ARTWORK @ BACK COLLAR
- A11 ARTWORK @ CENTER BACK

1. fit: tham khảo SS24CT049
2. rib 1x1 gấp đôi tại cổ - tham khảo cấu trúc trang sau
3. artwork cổ trước phải
4. artwork giữa ngực
5. artwork tay phải
6. artwork tay trái
7. nhãn cờ tại sườn
8. rib 1x1 tại lai tay
9. khoét cong ở đường may sườn
10. artwork tại giữa cổ sau
11. artwork tại giữa thân sau

3\_Construction Details-1



Comments (5)

- A1 1/4" SN TS @ NECK - COVERLOCK STITCH @ INTERIOR NECK
- A2 CLEAN SEAM FINISH @ SHOULDER
- A3 CLEAN SEAM FINISH @ ARMHOLE
- A4 STRADDLE STITCH @ SLEEVE CUFFS
- A5 COVER LOCK STITCH @ BOTTOM HEM - TURNBACK W/ COVERLOCK STITCH

- 1. điều 1 kim 1/4" tại cổ
- 2. may sạch tại đường may vai
- 3. may sạch tại đường may nách
- 4. điều rẽ tại lai tay
- 5. vắt sổ tại lai áo

4\_Stitching Details-1

FIT INTENTION REFERENCE



5\_Fit Intention Reference-1

MOCK NECK COLLAR REFERENCE



6\_Mockneck Collar Reference-1



Sample Size: M

POINT OF MEASURE	CODE	HOW TO MEASURE	CRITICAL	TYPE	TOLERANCE	M
Front Body Length	S&K001	HPS to bottom edge	true	Full	1/2 in	27 1/2 in
Back Body Length	S&K002	CB neck seam to bottom edge	true	Full	1/2 in	28 3/4 in
Shoulder Seam Forward	S&K007	HPS to seam	false	Full	1/8 in	1/2 in
Shoulder Slope	S&K008	Shoulder point perpendicular to HPS	false	Full	1/4 in	2 in
Front Neck Drop	S&K004	HPS to neck seam	false	Full	1/8 in	4 in
Back Neck Drop	WV005	FROM HPS LEVEL STRAIGHT DOWN TO CB NECK SEAM	true	Full	1/8 in	1 in
Back Neck Width	S&K006	Seam to seam at back neck, at HPS point	false	Full	1/4 in	6 5/8 in
Neck Trim Height	S&K254	Neck Seam to trim edge (before folded)	false	Full	1/8 in	1 1/4 in
Across Shoulder Width- Seam to seam	S&K259	Seam to Seam	false	Full	1/4 in	18 in
Across Front/Across Back Position from HPS	eos7YR		true	Full	0 in	7 in
Across Front	S&K010	Straight Down from HPS, Seam Center to Seam Center	false	Half	1/4 in	15 3/4 in
Across Back	S&K011	Straight Down from HPS, Seam Center to Seam Center	false	Half	1/4 in	16 1/4 in
Chest Width	S&K012	1" Below armhole- edge to edge	true	Half	1/4 in	21 1/2 in
Bottom Opening Width- At Edge	S&K013	At bottom edge	true	Half	1/4 in	21 in
Bottom Hem Height	S&K014	Bottom edge to stitch line or trim seam	false	Full	1/8 in	1 in
Sleeve Length from CB Neck	S&K032	3-point measure from CB Neck to shoulder point to sleeve edge	true	Full	1/2 in	34 in
Armhole Drop	S&K016	Below HPS - measure perpendicular	false	Full	1/4 in	11 1/2 in
Bicep Width	S&K017	1" below armhole- edge to edge	false	Half	1/4 in	8 3/4 in
Forearm Width	S&K345	9" up from sleeve cuff edge	false	Half	1/4 in	6 1/2 in
Sleeve Opening Width 1" Above Rib Knit Seam	S&K		true	Half	1/4 in	5 1/4 in
Sleeve Opening Width- At Edge	S&K073	At edge	false	Half	1/4 in	3 3/4 in
Cuff Height	S&K036	Cuff edge to seam	false	Full	1/8 in	2 in
CF Artwork Placement below CF Neckline	S&K112	From CF Neck Seam to Top Edge of Artwork	false	Full	1/8 in	3 1/2 in
CB Artwork Placement below CB Neck Seam	S&K109	From CB Neck Seam to Top Edge of Artwork	false	Full	1/8 in	2 in
Center WL + WR Sleeve Artwork on Sleeve Length + Sleeve Fold	S&K333		false	Full	0 in	0 in
Loop Label Placement at Sideseam	S&K023	Bottom edge to bottom of loop label, at the WL side seam	false	Full	1/8 in	7 in
ALD Logo Centered on Collar Back	A0ezrL		false	Full	0 in	0 in
Rapha Logo on Collar Out from CF	VyqO8t		true	Full	0 in	1 1/2 in



## Development Notes - Sarah Tota

CREATED ON OCT 17, 2025 3:41 PM

FW26CT040 - Rapha LS Tee

Date: 10/17/24

Status: Requesting 1st proto





TD: Sarah

Fit: SS26CT018 BMX Jersey

- Please use most recent pattern of SS26CT018 to ensure latest updates are included
- Please follow high to low bottom opening - follow curved hem as shown in sketch
- Please follow new artwork positioning
- Please remove all panels

fit: tham khảo SS26CT018

- Vui lòng sử dụng rập mới nhất của mã SS26CT018 (C0012-LST077) để đảm bảo các cập nhật mới nhất được áp dụng
- Vui lòng follow lai cao thấp – follow lai cong như thể hiện trong sketch
- Vui lòng follow vị trí artwork mới
- Vui lòng bỏ tất cả btp phối

COMPONENT		QTY	1.  PROTO
FABRIC			
1	<b>WYU2308-4</b> CODE: WYU2308-4 UA COTTON MESH Placement: BODY, SLEEVES, INTERIOR CB NECK TAPE Notes: AOP, FOLLOW ARTWORK FILE; ADD WASH TO SOFTEN Supplier: UNAVAILABLE Width: 160CM Weight: 250GSM Country of Origin: VIETNAM		-  Undefined Price: 0.00
2	<b>WYU1024-2</b> CODE: WYU1024-2 RIB Placement: COLLAR, CUFFS Notes: 1X1 RIB, DOUBLED Supplier: UNAVAILABLE		-  Mars Red Custom Code: 18-1655 TCX Price: 0.00
3	<b>ARTWORK</b> CODE: AS CORRESPONDING FILE Placement: WR COLLAR Notes: FOLLOW ARTWORK FILE AND POM Supplier: Factory Sourced		- ARTWORK Price: 0.00
4	<b>ARTWORK</b> CODE: AS CORRESPONDING FILE Placement: CF CHEST Notes: FOLLOW ARTWORK FILE AND POM Supplier: Factory Sourced		- ARTWORK Price: 0.00
5	<b>ARTWORK</b> CODE: AS CORRESPONDING FILE Placement: WR SLEEVE Notes: FOLLOW ARTWORK FILE AND POM Supplier: Factory Sourced		- ARTWORK Price: 0.00
6	<b>ARTWORK</b> CODE: AS CORRESPONDING FILE Placement: WL SLEEVE Notes: FOLLOW ARTWORK FILE AND POM Supplier: Factory Sourced		- ARTWORK Price: 0.00
7	<b>ARTWORK</b> CODE: AS CORRESPONDING FILE Placement: CB COLLAR Notes: FOLLOW ARTWORK FILE AND POM Supplier: Factory Sourced		- ARTWORK Price: 0.00
8	<b>ARTWORK</b> CODE: AS CORRESPONDING FILE Placement: CB Notes: FOLLOW ARTWORK FILE AND POM Supplier: Factory Sourced		- ARTWORK Price: 0.00
LABEL AND TRIM PACKAGE			
9	<b>ALD Woven Loop Label</b> CODE: ALD-ML02 Placement: WL SIDE SEAM Notes: FOLLOW POM Supplier: Colonial	1	-  Parmesan Base / Gold Text Price: 0.00
10	<b>ALD WOVEN TOP INSERT LABEL (SMALL)</b> CODE: ALD-ML133 Placement: INTERIOR CENTER BACK NECK Supplier: Colonial Country of Origin: CHINA	1 M	- ALD WOVEN TOP INSERT LABEL (SMALL) SIZE VARIANTS: ALPHA Price: 175.00
Components 10			Total 175.00