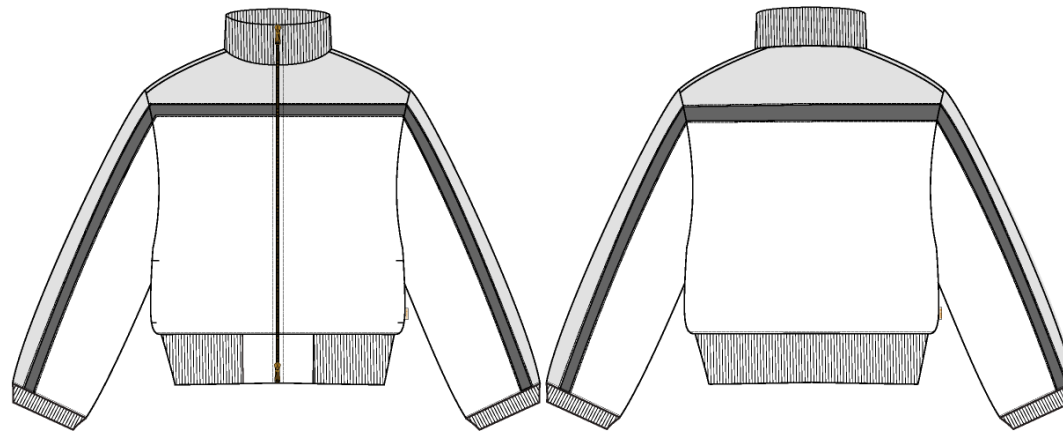


Fitted Full Zip

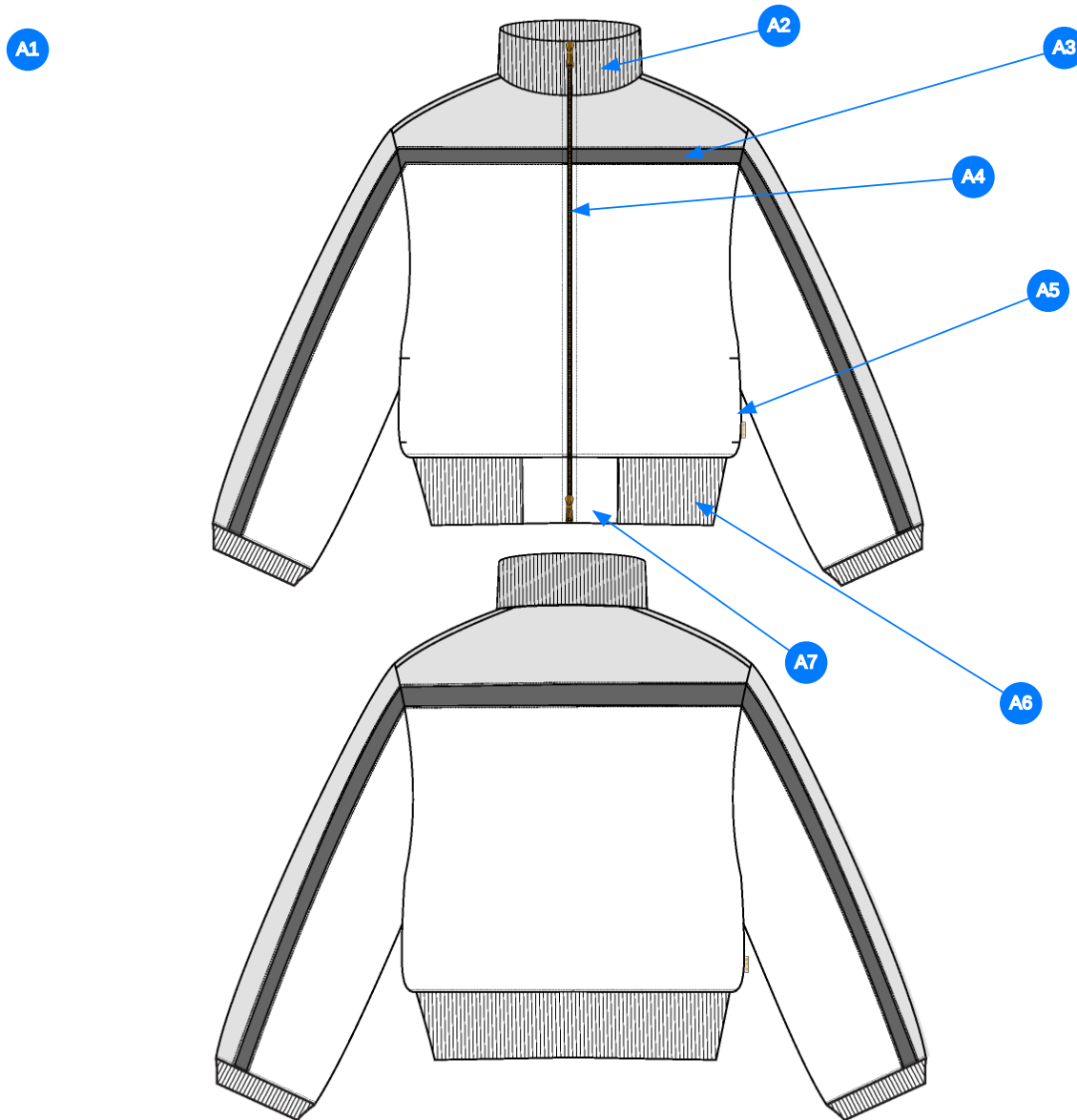
Name	Fitted Full Zip
Style No.	FW26CS007
Division	Mens
Category	Sweatshirts
Season	Fall/Winter
Year	2026
Size Scale	<div>M</div> -Sample size <div><div>XS</div><div>S</div><div>M</div><div>L</div><div>XL</div><div>XXL</div></div>
Style Status	Development
Factory	UN-AVAILABLE
Designer Name	Wes
TD Name	Anastasiya
Created by/Author	8/28/2025 Jeni Fitzgerald jeni.fitzgerald@aimeleondore.com



1\_B&W-1



2\_CLR-1

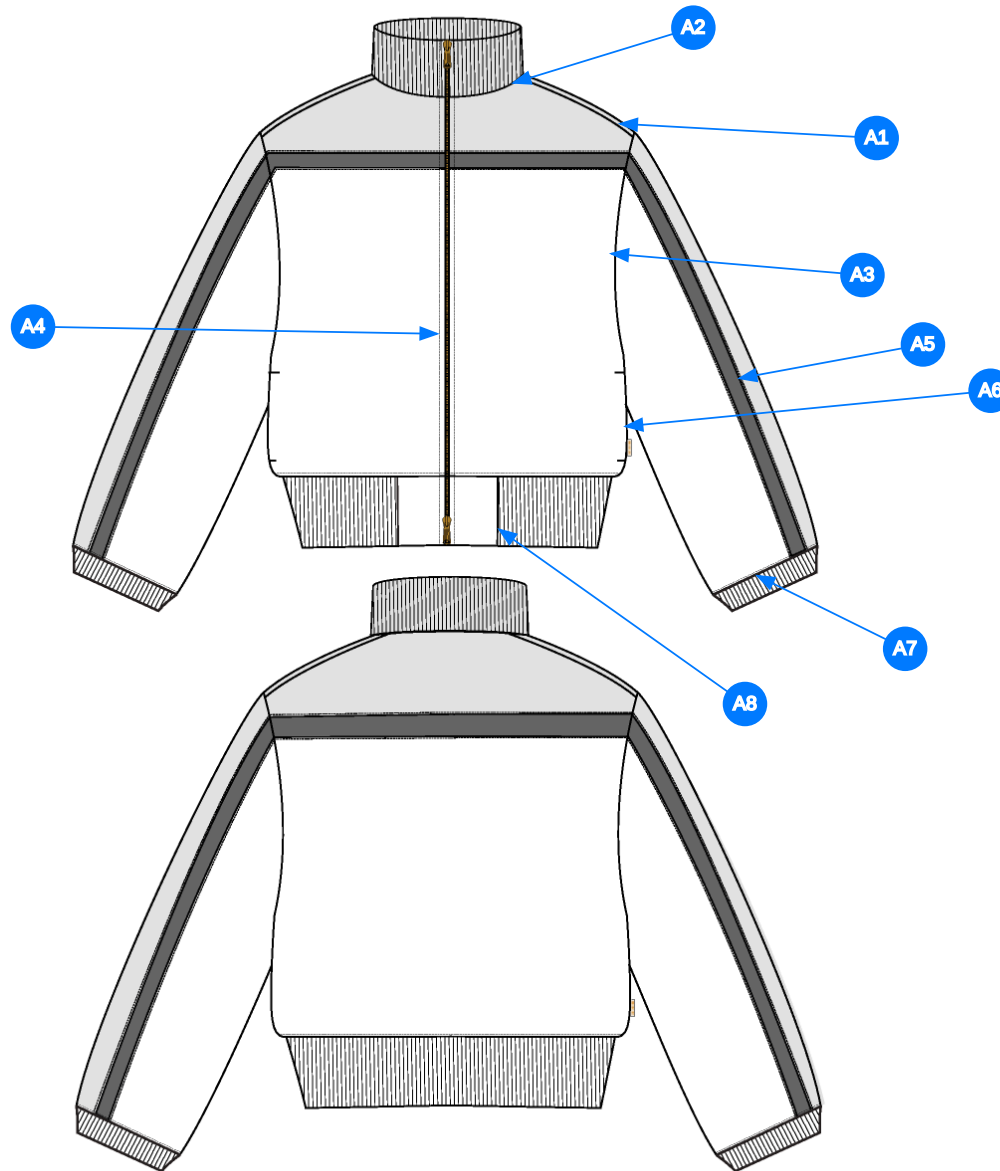


Comments (7)

- A1** FIT: TRACK JACKET (FW25WJ083)
- A2** STAND COLLAR - 1X1 RIB
- A3** SET-IN PANEL @ BODY & SLEEVES
- A4** ZIPPER CLOSURE @ CF
- A5** POCKETS @ SIDE SEAM - JERSEY POCKET BAG ON KNUCKLE SIDE - SELF ON PALM
- A6** 1X1 RIB DOUBLED @ BOTTOM HEM & SLEEVE HEM
- A7** PANEL @ CF RIBBING

1. fit: tham khảo FW25WJ083
2. rib tại cổ
3. phối tại lai thân và tay
4. dây kéo tại giữa trước
5. túi tại sườn - lót túi bằng vải jersey tại mặt mu bàn tay - vải chính mặt lòng bàn tay
6. rib 1x1 gấp đôi tại lai áo và lai tay
7. phối bằng vải chính tại giữa trước

3\_Construction Details-1



Comments (8)

- A1 STRADDLE STITCH @ SHOULDER
- A2 CLEAN SEAM FINISH @ STAND COLLAR
- A3 CLEAN SEAM FINISH @ ARMHOLE
- A4 1/4" SN TS @ ZIPPER
- A5 SN TOPSTITCH @ SET IN PANEL
- A6 CLEAN SEAM FINISH @ SIDE SEAM
- A7 STRADDLE STITCH @ SLEEVE CUFFS & BOTTOM HEM
- A8 STRADDLE STITCH @ PANEL AND RIBBING

1. điều rẽ tại vai
2. may sạch tại cổ
3. may sạch tại nách
4. điều 1 kim 1/4" tại dây kéo
5. điều 1 kim tại phổi
6. may sạch tại sườn
7. điều rẽ tại lai tay và lai áo
8. điều rẽ tại phổi vải chính tại rib giữa trước

4\_Stitching Details-1

FIT REFERENCE



7\_Fit Intention-1

Sample Size: M

POINT OF MEASURE	CODE	HOW TO MEASURE	CRITICAL	TYPE	TOLERANCE	M
Front Body Length	S&K01	HPS to bottom edge	true	Full	1/4 in	25 in
Back Body Length	S&K02	CB neck seam to bottom edge	true	Full	1/4 in	24 1/2 in
CF Zipper Length	S&K03	From neck to bottom edge	false	Full	1/4 in	24 in
Front Neck Drop	S&K04	HPS to neck seam	false	Full	1/8 in	4 in
Back Neck Drop	S&K05	HPS to neck seam	false	Full	1/8 in	1/2 in
Back Neck Width	S&K06	Seam to seam at back neck, at HPS point	false	Full	1/4 in	7 1/2 in
Neck Width at Top @ Top Edge	S&K201		false	Full	1/8 in	0 in
Shoulder Slope	S&K08	Shoulder point perpendicular to HPS	false	Full	1/4 in	2 1/2 in
Across Shoulder	S&K09	Edge to edge	false	Half	1/4 in	20 in
Across Front	S&K010	7" dwn from HPS, Seam to seam	false	Half	1/4 in	16 5/8 in
Across Back	S&K011	7" dwn from HPS, Seam to Seam	false	Half	1/4 in	18 1/2 in
Chest Width	S&K012	1" Below armhole- edge to edge	true	Half	1/4 in	23 1/2 in
Bottom Opening Width Relaxed- At Seam	S&K108	Straight with seam relaxed	true	Half	1/2 in	19 1/2 in
Bottom Opening Width- At Rib Edge	S&K		true	Half	1/2 in	17 1/2 in
Bottom Hem Height	S&K83	Bottom edge to top of trim	false	Full	1/8 in	1 in
Sleeve Length from CB Neck	S&K032	3-point measure from CB Neck to shoulder point to sleeve edge	true	Full	1/2 in	34 1/2 in
Armhole Drop	S&K016	Below HPS - measure perpendicular	false	Full	1/4 in	13 in
Bicep Width	S&K017	1" below armhole- edge to edge	false	Half	1/4 in	10 in
Forearm Width	S&K033	9" up from sleeve cuff edge	false	Half	1/4 in	7 1/4 in
Sleeve Opening Width- At Seam	S&K034	Width at Seam	false	Half	1/4 in	4 1/2 in
Sleeve Opening Width- At Edge	S&K73	At edge	false	Half	1/4 in	3 3/4 in
Sleeve Cuff Height	S&K36	Cuff edge to seam	false	Full	1/8 in	2 in
Collar Height at CB	S&K025	Neck seam to collar edge at CB	false	Full	1/8 in	3 in
On-seam Pocket Opening Length	S&K63	Along opening edge	false	Full	1/4 in	6 1/4 in
On-Seam Pocket Placement from Bottom Edge	S&K315		false	Full	1/8 in	4 in
Sideseam Forward Placement	S&K161		false	Full	1/8 in	1/2 in
Front/Back Yoke Placement from HPS	wr21Ow		true	Full	1/8 in	6 in
Sleeve Panel Width	h6NjZ6		true	Full	1/8 in	4 in

## Development Notes - Anastasiya Zolotova

CREATED ON AUG 18, 2025 6:15 PM

FW26CS007 Fitted Full Zip

Date: 8/18/25








TD: Anastasiya

Sample Request: 1st Proto w/artwork

Fit: Follow measurement page, construction page, and design sketch to develop a new pattern.

**fit: tham khảo trang thông số, trang cấu trúc và sketch để làm mẫu**



COMPONENT		QTY	1.  PROTO
FABRIC			
1	<b>TAKISADA 6677193</b> CODE: 6677193 Placement: BODY, PALM SIDE POCKET BAG, INSERT PANEL AT CF BOTTOM HEM Notes: PLS ALSO HELP TO LOCALLY SOURCE SIMILAR QUALITIES IN A HEAVIER GSM, GRID/TEXTURED PATTERN CAN VARY Supplier: Takisada Weight: 280 GSM Country of Origin: CHINA		-  #09 Price: 0.00
2	<b>TAKISADA 6677193</b> CODE: 6677193 Placement: YOKE AND SLEEVE PANELS Notes: SAME QUALITY AS SELF, CONTRAST COLOR A Supplier: Takisada Weight: 280 GSM Country of Origin: CHINA		-  #27 Price: 0.00
3	<b>TAKISADA 6677193</b> CODE: 6677193 Placement: SET IN PANEL AT BODY AND SLEEVES Notes: SAME QUALITY AS SELF, CONTRAST COLOR B Supplier: Takisada Weight: 280 GSM Country of Origin: CHINA		-  #23 Price: 0.00
4	<b>IN DEV</b> CODE: TBD Placement: KNUCKLE SIDE POCKET BAGS Notes: COTTON JERSEY		- IN DEV Price: 0.00
5	<b>IN DEV</b> CODE: TBD Placement: NECK TRIM, SLEEVE CUFF TRIM, BOTTOM HEM TRIM Notes: 1X1 RIB		- IN DEV Price: 0.00
6	<b>YKK 2-WAY COIL OPEN END ZIPPER</b> CODE: TBD Placement: @ CF Supplier: YKK		- YKK 2-WAY COIL OPEN END ZIPPER SIZE: 5GG Price: 0.00
7	<b>YKK Zipper Tape</b> CODE: YKK Placement: @ CF ZIPPER		-  Undefined Price: 0.00
8	<b>YKK DA8 Zipper Slider</b> CODE: DA8 Placement: @ CF ZIPPER Supplier: YKK		-  Undefined Price: 0.00
LABEL AND TRIM PACKAGE			
9	<b>ALD Woven Main Label W/ Size</b> CODE: ALD-ML03 Placement: FOLLOW LABEL + PACKAGING GUIDE Supplier: Colonial Country of Origin: CHINA	1 Piece	- ALD Woven Main Label W/ Size Price: 0.079
10	<b>ALD Woven Loop Label</b> CODE: ALD-ML02 Placement: FOLLOW LABEL + PACKAGING GUIDE Supplier: Colonial	1	-  Parmesan Base / Gold Text Price: 0.00
Components 10			Total 0.079