

Name	Script Crewneck
Style No.	FW26CS019
Division	Mens
Category	Sweatshirts
Season	Fall/Winter
Year	2026
Size Scale	M -Sample size <div><div>XS</div><div>S</div><div>M</div><div>L</div><div>XL</div><div>XXL</div></div>
Style Status	Development
Factory	UN-AVAILABLE
Designer Name	Nils
TD Name	Anastasiya
Created by/Author	9/8/2025 Jeni Fitzgerald jeni.fitzgerald@aimeleondore.com

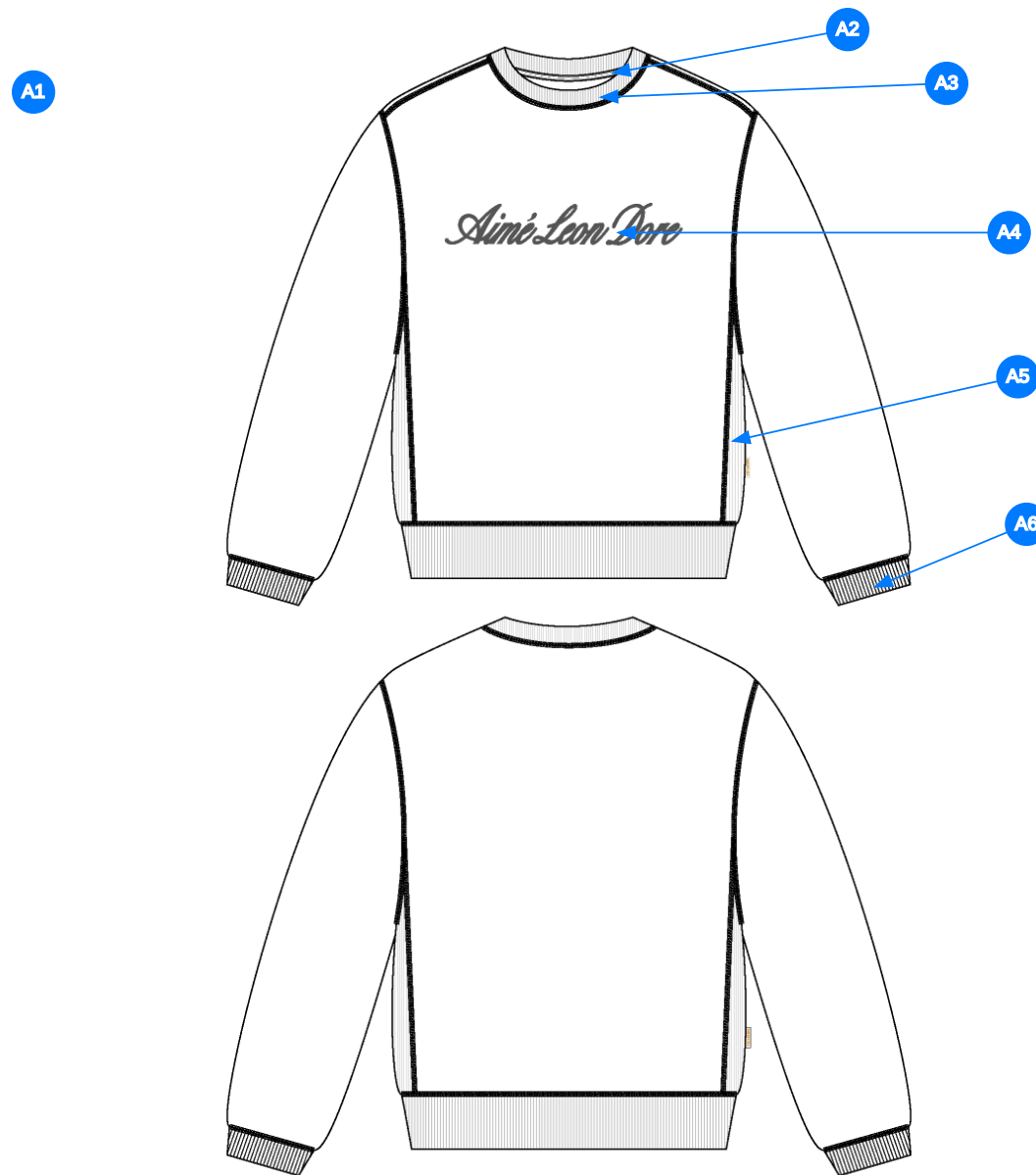
Script Crewneck



1\_B&W-1



2\_CLR-1

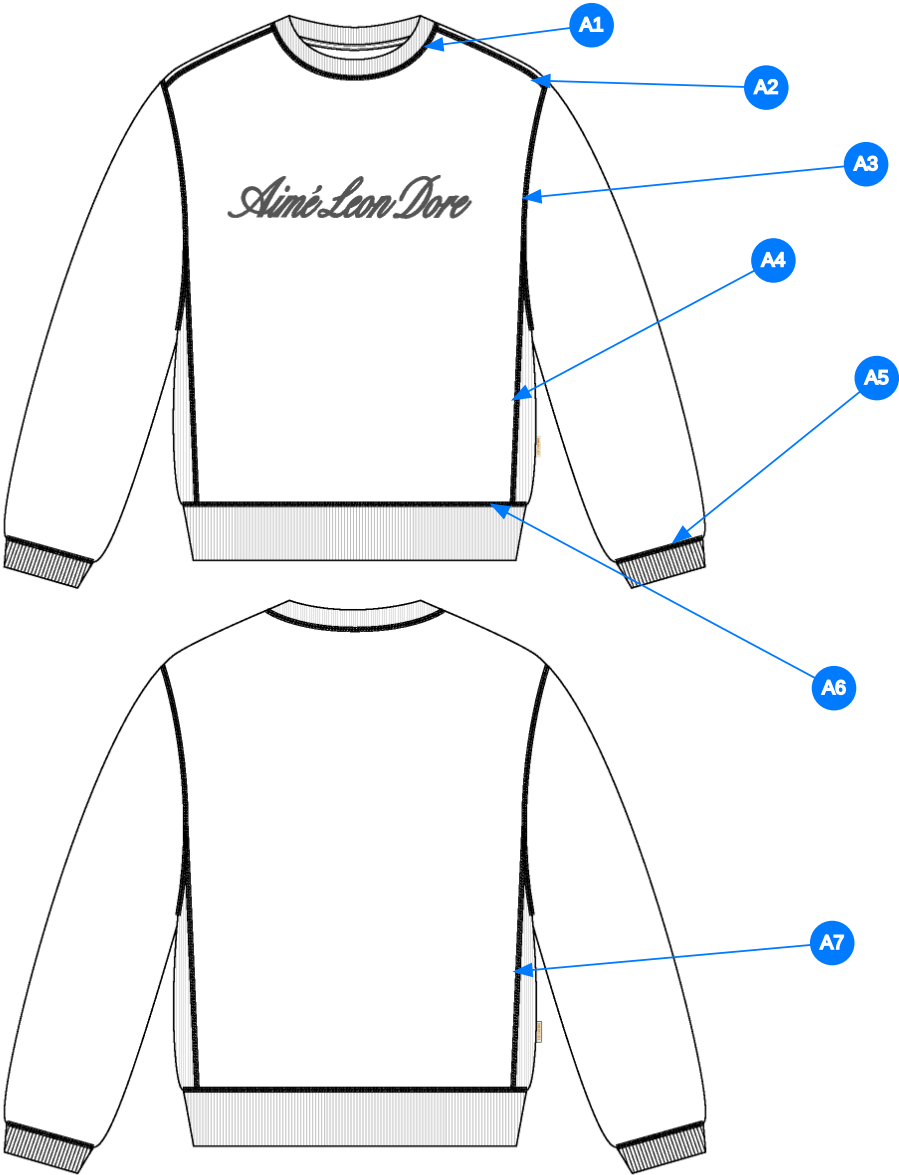


## Comments (6)

- A1** FIT: LARGE SCRIPT CREWNECK (FW25CS007)
- A2** HERRINGBONE TAPE @ CB NECK
- A3** 2X2 RIB DOUBLED @ NECK TRIM
- A4** PRINTED ARTWORK @ CF BODY
- A5** 2X2 RIB @ SIDE SEAM - ONE PANEL CONSTRUCTION - DOUBLE THE RIB PANEL
- A6** 2X2 RIB DOUBLED @ SLEEVE CUFFS & BOTTOM HEM

1. fit: tham khảo FW25CS007
2. dây tape xương cá viền cổ sau
3. rib gấp đôi tại bo cổ
4. hình in tại thân trước
5. rib tại sườn - cấu trúc 1 btp - rib 2 lớp
6. rib gấp đôi tại lai tay và lai áo

3\_Construction Details-1



Comments (7)

- A1 COVERLOCK STITCH @ NECK
- A2 COVERLOCK STITCH @ SHOULDER
- A3 COVERLOCK STITCH @ ARMHOLE
- A4 COVERLOCK STITCH @ SET IN PANEL
- A5 COVERLOCK STITCH @ SLEEVE CUFFS
- A6 COVERLOCK STITCH @ BOTTOM HEM
- A7 COVERLOCK STITCH @ SET IN PANEL

- 1. đánh bông tại cổ
- 2. đánh bông tại vai
- 3. đánh bông tại nách
- 4. đánh bông tại phối trước
- 5. đánh bông tại lai tay
- 6. đánh bông tại lai áo
- 7. đánh bông tại phối sau

4\_Stitching Details-1

Sample Size: M

POINT OF MEASURE	CODE	HOW TO MEASURE	CRITICAL	TYPE	TOLERANCE	M
Front Body Length	S&K01	HPS to bottom edge	true	Full	1/2 in	27 in
Back Body Length	S&K02	CB neck seam to bottom edge	true	Full	1/2 in	25 3/4 in
Shoulder Seam Forward	S&K07	HPS to seam	false	Full	1/8 in	1/2 in
Shoulder Slope	S&K08	Shoulder point perpendicular to HPS	false	Full	1/4 in	1 3/4 in
Front Neck Drop	S&K04	HPS to neck seam	false	Full	1/8 in	4 in
Back Neck Drop	S&K05	HPS to neck seam	false	Full	1/8 in	1 1/4 in
Back Neck Width	S&K06	Seam to seam at back neck, at HPS point	false	Full	1/4 in	7 3/4 in
Neck Trim Height	S&K020	Neck Seam to trim edge	false	Full	1/8 in	13/16 in
Minimum Neck Stretch	S&K199		true	Half	0 in	11 1/2 in
Across Shoulder	S&K09	Seam to seam	false	Half	1/4 in	20 1/2 in
Across Front/Across Back Position from HPS	eos7YR		true	Full	0 in	7 in
Across Front	S&K010	Down from HPS, Seam to seam	false	Half	1/4 in	19 in
Across Back	S&K011	Down from HPS, Seam to Seam	false	Half	1/4 in	19 1/2 in
Chest Width	S&K012	1" Below armhole- edge to edge	true	Half	1/4 in	22 3/4 in
Bottom Opening 2" Above Rib Knit Seam	S&K		true	Half	1/4 in	21 3/4 in
Bottom Opening Width- Along Seam Relaxed	S&K108		true	Half	1/2 in	20 1/4 in
Bottom Opening Width- At Edge	S&K013	At bottom edge	true	Half	1/4 in	17 in
Bottom Hem Height	S&K014	Bottom edge to stitch line or trim seam	false	Full	1/8 in	2 3/4 in
Side Panel Body Width - Total	eMtOy2	Seam to Seam	true	Full	1/8 in	5 1/2 in
Sleeve Length from CB Neck	S&K032	3-point measure from CB Neck to shoulder point to sleeve edge	true	Full	1/2 in	35 in
Armhole Drop	S&K016	Below HPS - measure perpendicular	false	Full	1/4 in	12 1/2 in
Bicep Width	S&K017	1" below armhole- edge to edge	false	Half	1/4 in	9 1/2 in
Forearm Width	S&K033	9" up from sleeve cuff edge	false	Half	1/4 in	7 1/4 in
Sleeve Opening Width 1" Above Rib Knit Seam	S&K		true	Half	1/4 in	5 3/8 in
Sleeve Opening Width- At Edge	S&K73	At edge	false	Half	1/4 in	3 3/4 in
Sleeve Opening Width- At Seam	S&K034	Width at Seam	false	Half	1/4 in	4 3/4 in
Sleeve Cuff Height	S&K36	Cuff edge to seam	false	Full	1/8 in	2 3/4 in
CF Artwork Placement below CF Neckline	S&K112	From CF Neck Seam to Top Edge of Artwork	false	Full	1/8 in	4 in
Loop Label Placement at Sideseam	S&K023	Bottom edge to bottom of loop label, at the WL side seam	false	Full	1/8 in	7 in






Development Notes - Anastasiya Zolotova

CREATED ON SEP 8, 2025 9:07 PM

FW26CS019 Script Crewneck  
Date: 9/8/25  
TD: Anastasiya  
Sample Request: Requesting 1st Proto

Fit: Follow FW25CS007 Large Script Crewneck

fit: tham khảo FW25CS007

COMPONENT		QTY	1.  PROTO
FABRIC			
1	<b>UA Loop Back Heavy Fleece</b> CODE: C2300234 French Terry Placement: BODY Supplier: UNAVAILABLE Weight: 560gsm		-  Equestrian Red Custom Code: 19-1755 TCX  Price: 0.00
2	<b>UA 2x2 Terry Rib</b> CODE: C2300246 Placement: NECK, CUFFS, HEM, SIDE BODY PANELS Notes: 2X2 RIB, DOUBLED Supplier: UNAVAILABLE		-  Equestrian Red Custom Code: 19-1755 TCX  Price: 0.00
3	<b>UA Herringbone Tape</b> CODE: ALTAPE1 Placement: STRADDLED OVER BACK NECK SEAM F/ SH TO SH Supplier: UNAVAILABLE		-  Equestrian Red Custom Code: 19-1755 TCX Width: 3/8" Price: 0.00
4	<b>ARTWORK</b> CODE: AS CORRESPONDING FILE Placement: WL CHEST Notes: FOLLOW ARTWORK FILE AND POM Supplier: Factory Sourced		- ARTWORK  Price: 0.00
LABEL AND TRIM PACKAGE			
5	<b>ALD Woven Main Label W/ Size</b> CODE: ALD-ML03 Placement: INTERIOR CENTER BACK NECK Supplier: Colonial Country of Origin: CHINA	1 Piece	- ALD Woven Main Label W/ Size  Price: 0.079
6	<b>ALD Woven Loop Label</b> CODE: ALD-ML02 Placement: WEARERS LEFT SIDE SEAM (FOLLOW POM) Supplier: Colonial	1	-  Parmesan Base / Gold Text  Price: 0.00
Components 6			Total 0.647