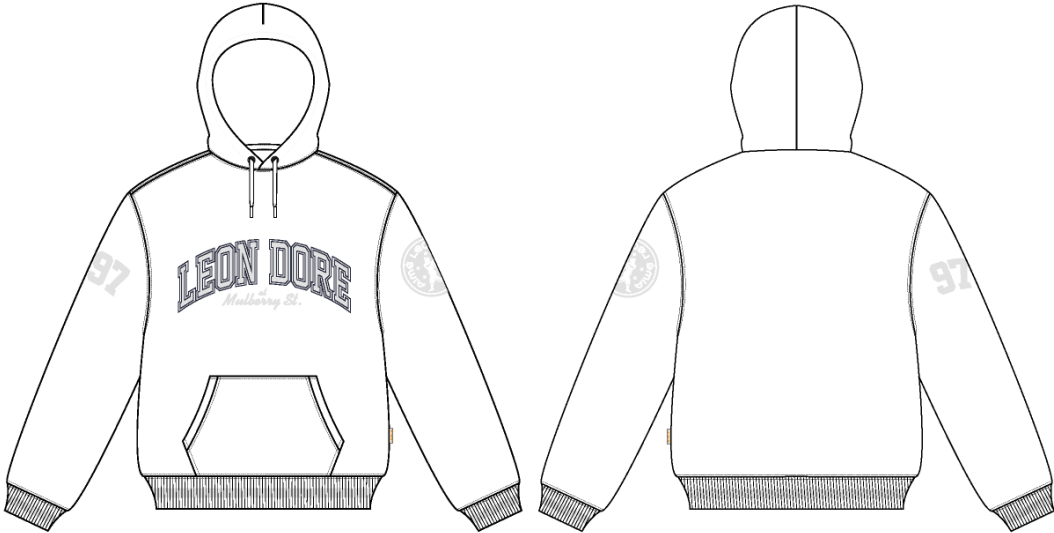


Name	Chenille Patch Hoodie
Style No.	FW26CH002
Division	Mens
Category	Hoodies
Season	Fall/Winter
Year	2026
Size Scale	M -Sample size
	XS S M L XL XXL
Style Status	Development
Factory	UN-AVAILABLE
Designer Name	Wes
TD Name	Anastasiya
Created by/Author	8/18/2025 Jeni Fitzgerald jeni.fitzgerald@aimeleondore.com

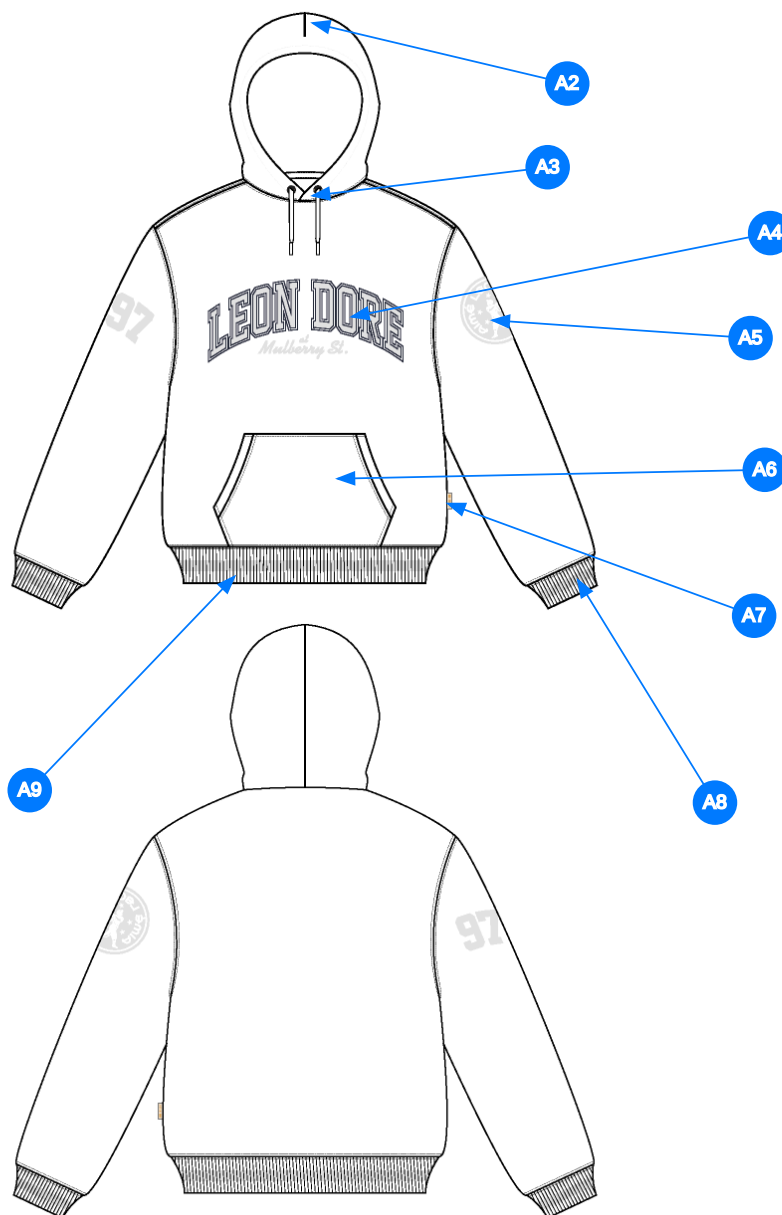
Chenille Patch Hoodie



1_B&W-1



2_CLR-1

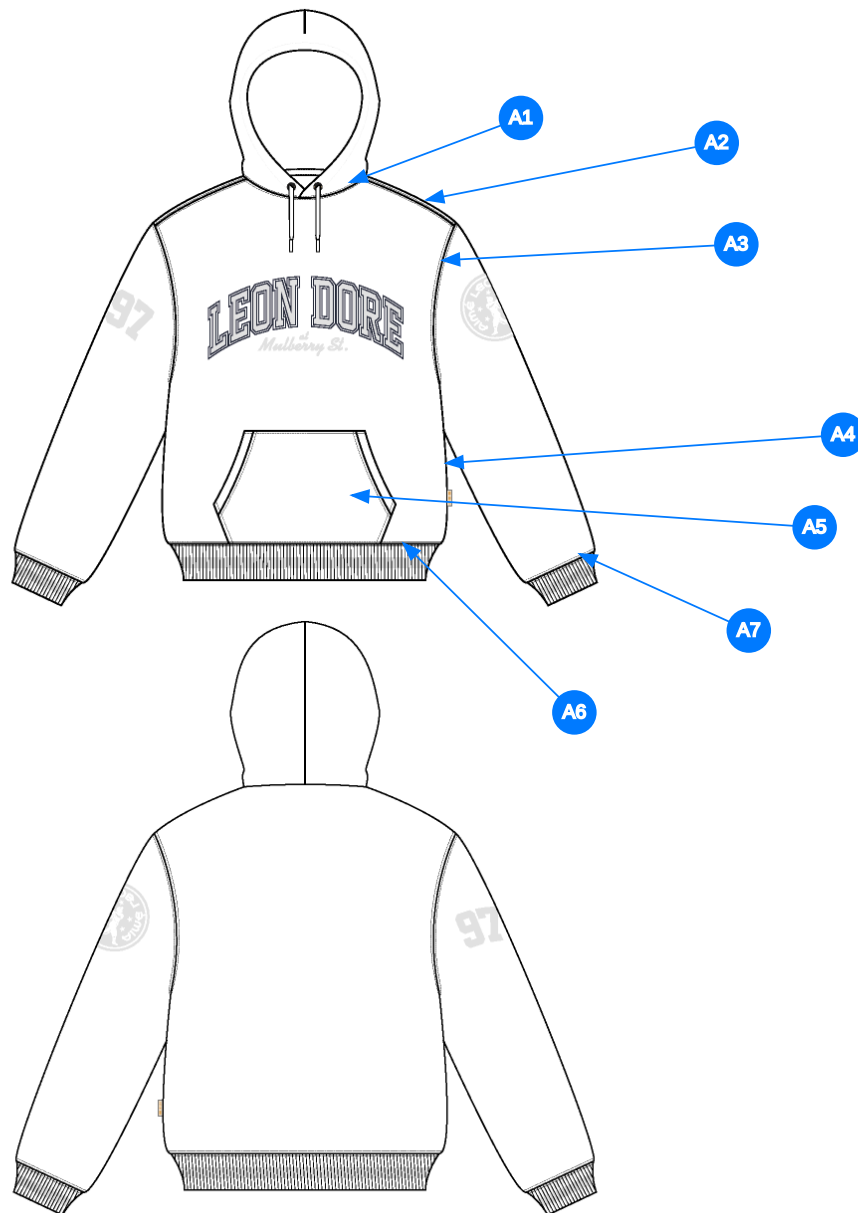


3_Construction Details-1

Comments (9)

- A1** FIT: REGULAR HOODIE
- A2** DART @ HOOD
- A3** THREAD EYELETS W/ DRAWCORD @ HOOD - ROUND BRAIDED DRAWCORDS W/ KNOT AND FRAYED ENDS
- A4** CHENILLE PATCH ARTWORK @ CF CHEST - SEE ADDITIONAL FILE FOR ARTWORK DETAILS
- A5** CHENILLE PATCH ARTWORK @ SLEEVES - SEE ADDITIONAL FILE FOR ARTWORK DETAILS
- A6** KANGAROO POCKET @ FRONT BODY
- A7** ALD WOVEN LABEL @ SIDE SEAM
- A8** 2X2 RIB DOUBLED @ SLEEVE CUFF & HEM
- A9** YARN DYED STRIPE RIB @ SLEEVE CUFFS AND BOTTOM HEM -SEE ADDITIONAL FILE FOR ARTWORK DETAILS

- 1. fit: tham khảo regular hoodie
- 2. xẻ nón
- 3. thùy khuy với dây luồn tròn gút đầu luồn tại nón
- 4. thêu tại giữa trước
- 5. thêu tại tay
- 6. túi kangaroo tại giữa trước
- 7. nhãn cò tại sườn trái bên ngoài áo- nhãn chồm về phía thân sau
- 8. rib 2 lớp tại lai tay và lai áo
- 9. rib sọc tại lai tay và lai áo- xem file artwork riêng



4_Stitching Details-1

Comments (7)

- A1** STRADDLE STITCH @ NECK
- A2** STRADDLE STITCH @ SHOULDER SEAM
- A3** STRADDLE STITCH @ ARMHOLE
- A4** CLEAN SEAM @ SIDE SEAM
- A5** 1/8" SN TS @ POCKET - APPLIES TO TOP AND BOTTOM EDGES - 1/4" DN TS @ OPENINGS
- A6** STRADDLE STITCH @ BOTTOM HEM
- A7** STRADDLE STITCH @ SLEEVE CUFF

- 1. điều rã tại cổ
- 2. điều rã tại đường may vai
- 3. điều rã tại nách
- 4. may sạch tại đường may sườn
- 5. điều 1 kim 1/8" tại mí cạnh trên và cạnh dưới túi - điều 2 kim 1/4" tại miệng túi
- 6. điều rã tại lai áo
- 7. điều rã tại lai tay

PATCH REFERENCE
FOLLOW FOR CHENILLE PATCHES



5_Chenille Patch Reference-1

Sample Size: M

POINT OF MEASURE	CODE	HOW TO MEASURE	CRITICAL	TYPE	TOLERANCE	M
Front Body Length	S&K01	HPS to bottom edge	true	Full	1/2 in	27 in
Back Body Length	S&K02	CB neck seam to bottom edge	true	Full	1/2 in	26 1/4 in
Shoulder Seam Forward	S&K	HPS to seam	false	Full	1/8 in	1/2 in
Shoulder Slope	S&K08	Shoulder point perpendicular to HPS	false	Full	1/4 in	2 1/2 in
Front Neck Drop	S&K04	HPS to neck seam	false	Full	1/8 in	3 1/2 in
Back Neck Drop	S&K05	HPS to neck seam	false	Full	1/8 in	3/4 in
Back Neck Width	S&K06	Seam to seam at back neck, at HPS point	false	Full	1/4 in	9 in
Minimum Neck Stretch	S&K199		true	Half	0 in	11 1/2 in
Across Shoulder Width- Seam to seam	S&K259	Seam to Seam	false	Full	1/4 in	22 1/2 in
Across Front/Across Back Position from HPS	eos7YR		true	Full	0 in	7 in
Across Front	S&K010	Down from HPS, Seam to seam	false	Half	1/4 in	20 1/2 in
Across Back	S&K011	Down from HPS, Seam to Seam	false	Half	1/4 in	21 in
Chest Width	S&K012	1" Below armhole- edge to edge	true	Half	1/4 in	22 1/2 in
Bottom Opening 2" Above Rib Knit Seam	S&K	At bottom edge	true	Half	1/4 in	20 in
Bottom Opening Width- At Seam	S&K108	Straight with seam relaxed	true	Half	1/4 in	19 1/2 in
Bottom Opening Width- At Edge	S&K013	At bottom edge	true	Half	1/4 in	17 1/2 in
Bottom Hem Height	S&K014	Bottom edge to stitch line or trim seam	false	Full	1/8 in	2 1/2 in
Sleeve Length from CB Neck	S&K032	3-point measure from CB Neck to shoulder point to sleeve edge	true	Full	1/2 in	35 in
Armhole Drop	S&K016	Below HPS - measure perpendicular	false	Full	1/4 in	13 in
Bicep Width	S&K017	1" below armhole- edge to edge	false	Half	1/4 in	10 1/4 in
Forearm Width	S&K033	9" up from sleeve cuff edge	false	Half	1/4 in	7 1/2 in
Sleeve Opening Width 1" Above Rib Knit Seam	S&K073	At edge	false	Half	1/4 in	5 1/4 in
Sleeve Opening Width- At Seam	S&K034	Width at Seam	false	Half	1/4 in	4 3/4 in
Sleeve Opening Width- At Edge	S&K73	At edge	false	Half	1/4 in	3 3/4 in
Sleeve Cuff Height	S&K36	Cuff edge to seam	false	Full	1/8 in	2 1/2 in
Hood Height at CF	S&K40	From neck seam to top edge	false	Half	3/8 in	15 in
Hood Height at HPS	S&K170		false	Full	1/8 in	13 1/2 in
Hood Width 6" Below Top Edge	S&K41	Straight from CF edge to CB seam- 6" down	false	Half	3/8 in	11 in
Exposed Drawcord Length	JHqvA4		false	Full	1/2 in	10 in
Hood Tunnel Height	S&K183		false	Full	1/8 in	1 in
Hood Overlap Width at CF Neck	S&K174		false	Full	1/8 in	1 in
Drawcord Opening Placement up from Neck Seam	S&K212		false	Full	1/8 in	1 1/2 in
Kangaroo Pocket Height At Center	S&K44	Height at center	false	Full	1/4 in	8 1/2 in
Kangaroo Pocket Height at Sides	S&K384		false	Full	1/8 in	3 in
Kangaroo Pocket Width at Top Edge	S&K45	Width at top edge	false	Full	1/4 in	9 1/2 in
Kangaroo Pocket Width at Bottom	S&K46	Width at Bottom Edge - Extended	false	Full	1/4 in	12 3/4 in
Kangaroo Pocket Opening	S&K205		false	Full	1/8 in	6 1/4 in
Kangaroo Pocket Hem Height	S&K031	Edge to stitch line	false	Full	1/8 in	3/4 in
CF Artwork Placement below CF Neckline	S&K112	From CF Neck Seam to Top Edge of Artwork	false	Full	1/8 in	3 in
Sleeve Artwork Placement From Top of Sleeve Cap	S&K325	To Top Edge of Artwork	false	Full	1/8 in	3 1/2 in
Sleeve Artwork Centered on Sleeve Fold	S&K260		true	Full	1/8 in	0 in
Loop Label Placement at Sideseam	S&K023	Bottom edge to bottom of loop label, at the WL side seam	false	Full	1/8 in	7 in

Development Notes - Anastasiya Zolotova

CREATED ON AUG 18, 2025 6:04 PM

FW26CH002 Chenille Patch Hoodie
Date: 8/18/25
TD: Anastasiya
Sample Request: 1st Proto w/artwork

Fit: Follow HD Block (NOSCH002)








fit: tham khảo NOSCH002

Chenille Patch Hoodie - Style #FW26CH002

Mens, Hoodies, Fall/Winter, 2026

BOM > Set 1 of 1

08-18-2025

COMPONENT		QTY	1.  PROTO
FABRIC			
1	UA Loop Back Heavy Fleece CODE: C2300234 French Terry Placement: BODY, PATCH POCKET Supplier: UNAVAILABLE Weight: 560gsm		-  Oatmeal Melange Custom Code: Bros #B0209 Price: 0.00
2	UA 2x2 Terry Rib CODE: C2300246 Placement: CUFFS, HEM Notes: FOLLOW ARTWORK FILE FOR YARN DYED STRIPE Supplier: UNAVAILABLE		-  Oatmeal Melange Custom Code: Bros #B0209 Price: 0.00
3	UA Herringbone Tape CODE: ALTAPE1 Placement: STRADDLED OVER BACK NECK SEAM F/ SH TO SH Supplier: UNAVAILABLE		-  Oatmeal Melange Custom Code: Bros #B0209 Width: 3/8" Price: 0.00
4	THREAD EYELET CODE: THREAD EYELET Placement: DRAWCORD EXITS Notes: BUTTON HOLE SLIT EMB (NOT ROUND) Supplier: Factory Sourced		-  Oatmeal Melange Custom Code: Bros #B0209 Price: 0.00
5	SS24-CRDW CODE: UA Cotton Round Drawcord Placement: DRAWCORD TUNNEL @ HOOD Notes: KNOTTED FINISH, FRAYED ENDS Supplier: UNAVAILABLE		-  Oatmeal Melange Custom Code: Bros #B0209 Price: 0.00
6	ARTWORK CODE: AS CORRESPONDING FILE Placement: CF CHEST Notes: CHENILLE PATCH, FOLLOW ARTWORK FILE AND POM Supplier: Factory Sourced		- ARTWORK Price: 0.00
7	ARTWORK CODE: AS CORRESPONDING FILE Placement: WL SLEEVE Notes: CHENILLE PATCH, FOLLOW ARTWORK FILE AND POM Supplier: Factory Sourced		- ARTWORK Price: 0.00
8	ARTWORK CODE: AS CORRESPONDING FILE Placement: WR SLEEVE Notes: CHENILLE PATCH, FOLLOW ARTWORK FILE AND POM Supplier: Factory Sourced		- ARTWORK Price: 0.00
LABEL AND TRIM PACKAGE			
9	ALD Woven Loop Label CODE: ALD-ML02 Placement: WEARER'S LEFT SIDE SEAM Notes: FOLLOW POM Supplier: Colonial	1	-  Parmesan Base / Gold Text Price: 0.00
10	ALD Woven Main Label W/ Size CODE: ALD-ML03 Placement: INTERIOR CENTER BACK NECK Supplier: Colonial Country of Origin: CHINA	1 Piece	- ALD Woven Main Label W/ Size Price: 0.079
Components 10			Total 0.079

