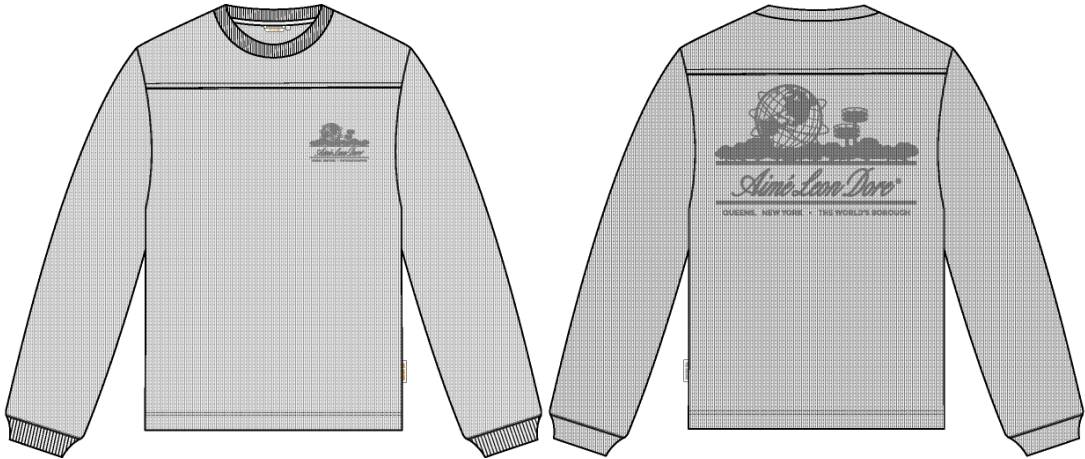


LS Mesh Unisphere Tee

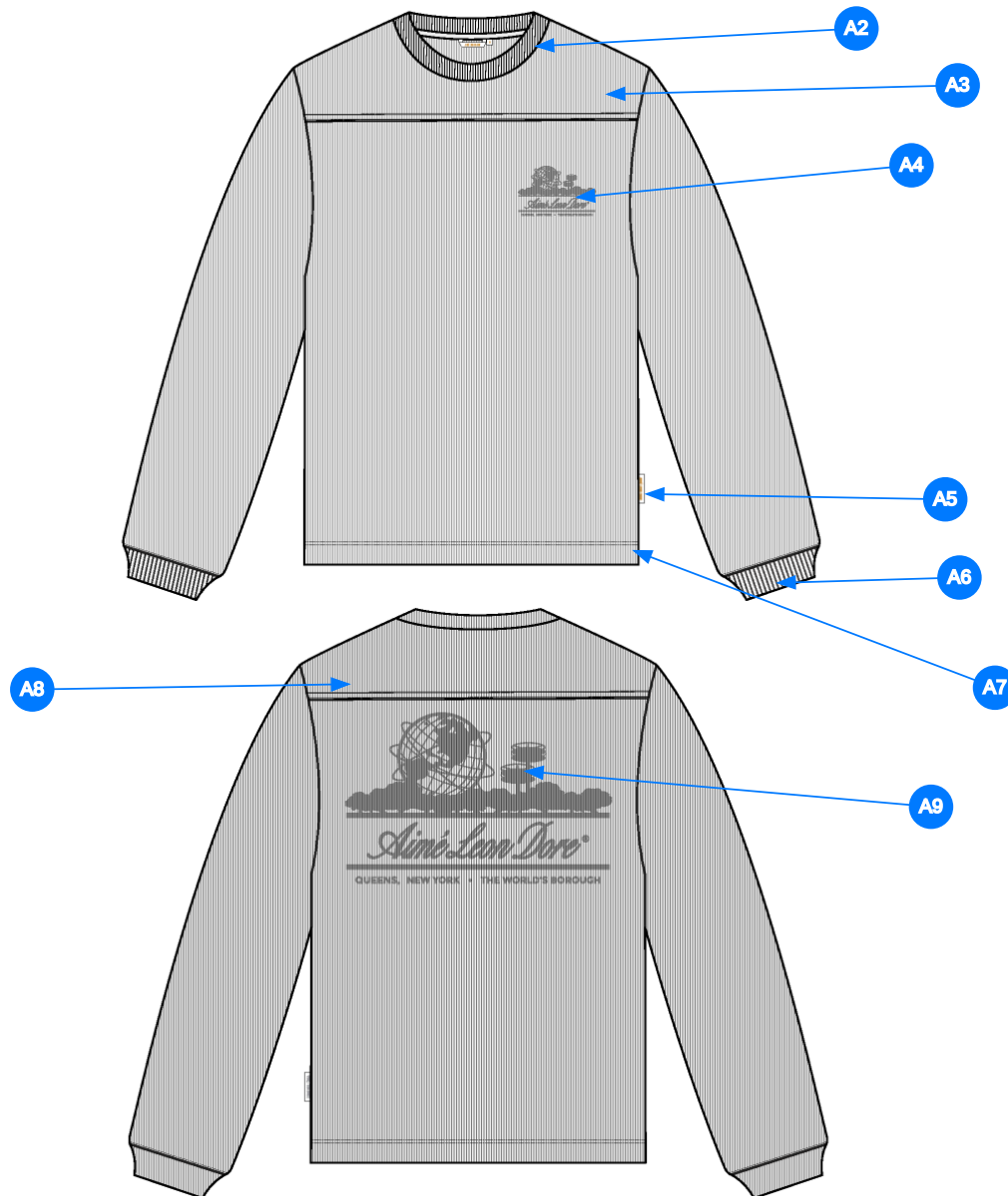
Name	LS Mesh Unisphere Tee
Style No.	FW26CT003
Division	Mens
Category	Tees
Season	Fall/Winter
Year	2026
Size Scale	<div>M</div> -Sample size <div><div>XS</div><div>S</div><div>M</div><div>L</div><div>XL</div><div>XXL</div></div>
Style Status	Development
Factory	UN-AVAILABLE
Designer Name	Wes
TD Name	Anastasiya
Created by/Author	8/18/2025 Jeni Fitzgerald jeni.fitzgerald@aimeleondore.com



1\_B&W-1



2\_CLR-1

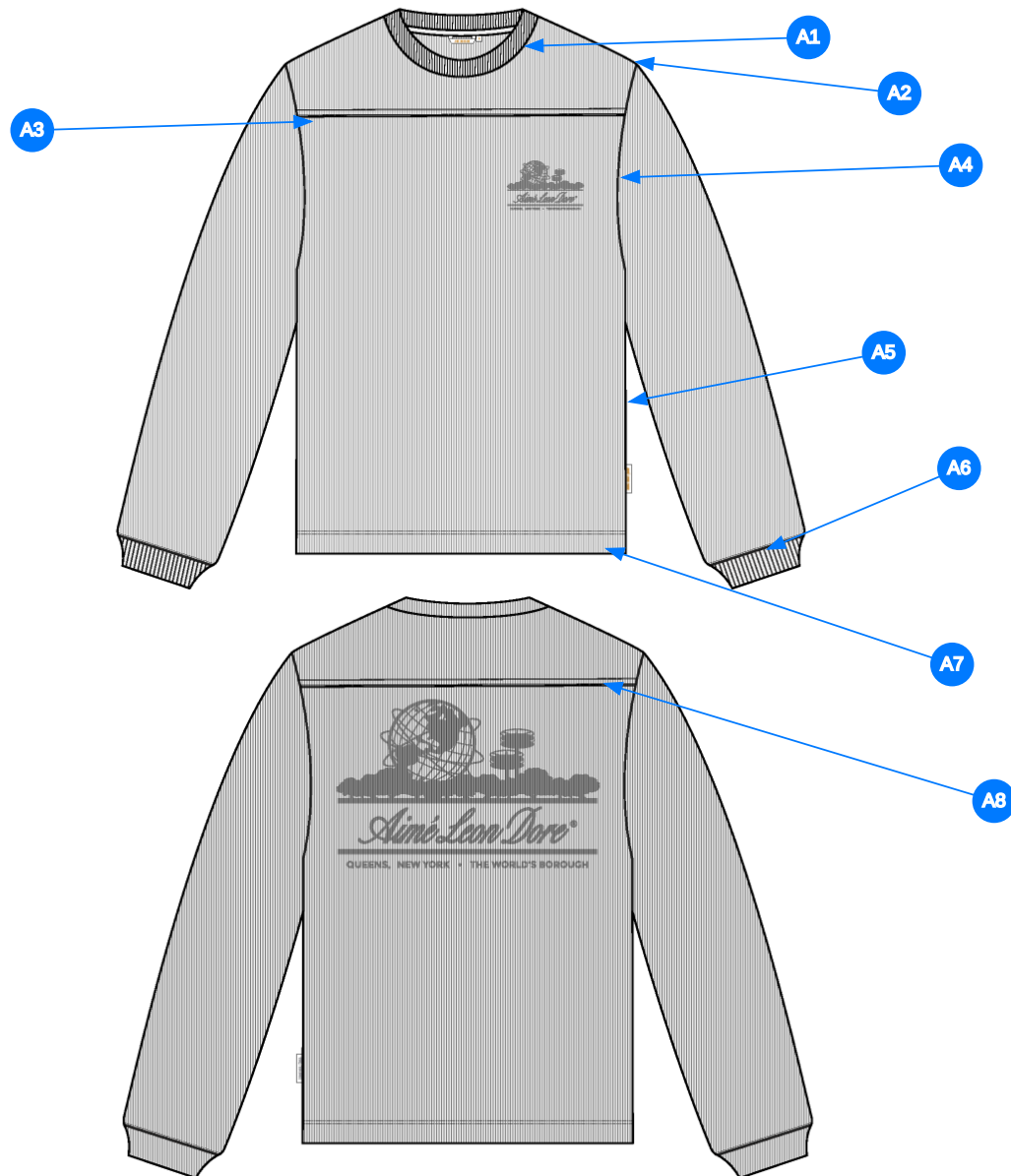


3\_Construction Details-1

Comments (9)

- A1 FIT: LS TEE FIT BLOCK - ADD WASH AS MESH CAMO TEE
- A2 1X1 RIB DOUBLED @ NECK - JERSEY TAPE ALONG BACK NECK
- A3 YOKE @ FRONT
- A4 PRINTED ARTWORK @ WL CHEST -PRINTED APPLICATION - SEE ADDITIONAL FILE FOR ARTWORK DETAILS
- A5 ALD WOVEN LABEL @ SIDE SEAM
- A6 1X1 RIB DOUBLED @ SLEEVE CUFF
- A7 VENT @ SIDE SEAM - TURNBACK W/ COVERLOCK STITCH
- A8 YOKE @ BACK
- A9 PRINTED ARTWORK @ CB -PRINTED APPLICATION - SEE ADDITIONAL FILE FOR ARTWORK DETAILS

1. fit: tham khảo LS Tee fit block - thêm wash như mã C0012-LST034
2. rib 2 lớp tại cổ, viền cổ bằng vải chính
3. đồ trước
4. hình in thân trước
5. nhãn cờ tại sườn ngoài
6. rib 2 lớp tại lai tay
7. xẻ lai
8. đồ sau
9. hình in thân sau



Comments (8)

- A1** STRADDLE STITCH @ NECK
- A2** CLEAN SEAM @ SHOULDER
- A3** STRADDLE STITCH @ FRONT YOKE
- A4** CLEAN SEAM @ ARMHOLE
- A5** CLEAN SEAM @ SIDE SEAM
- A6** STRADDLE STITCH @ SLEEVE CUFF
- A7** 1/4" DN TS @ BOTTOM HEM
- A8** STRADDLE STITCH @ BACK YOKE

1. điều rẽ tại cổ
2. may sạch tại vai
3. điều rẽ tại đồ trước
4. may sạch tại nách
5. may sạch tại đường may sườn
6. điều rẽ tại lai tay
7. điều 2 kim 1/4" tại lai áo
8. điều rẽ tại đồ sau

4\_Stitching Details-1

Sample Size: M

POINT OF MEASURE	CODE	HOW TO MEASURE	CRITICAL	TYPE	TOLERANCE	M
Front Body Length	S&K01	HPS to bottom edge	true	Full	1/2 in	28 in
Back Body Length	S&K02	CB neck seam to bottom edge	true	Full	1/2 in	27 1/4 in
Shoulder Seam Forward	S&K07	HPS to seam	false	Full	1/8 in	1/2 in
Shoulder Slope	S&K08	Shoulder point perpendicular to HPS	false	Full	1/4 in	2 in
Front Neck Drop	S&K04	HPS to neck seam	false	Full	1/8 in	4 1/4 in
Back Neck Drop	S&K05	HPS to neck seam	false	Full	1/8 in	3/4 in
Back Neck Width	S&K06	Seam to seam at back neck, at HPS point	false	Full	1/4 in	7 3/4 in
Minimum Neck Stretch	S&K199		true	Half	0 in	11 1/2 in
Neck Trim Height	S&K020	Neck Seam to trim edge	false	Full	1/8 in	13/16 in
Across Shoulder	S&K09	Seam to seam	false	Half	1/4 in	18 1/2 in
Across Front	S&K010	7" dwn from HPS, Seam to seam	false	Half	1/4 in	16 1/2 in
Across Back	S&K011	7" dwn from HPS, Seam to Seam	false	Half	1/4 in	17 in
Chest Width	S&K012	1" Below armhole- edge to edge	true	Half	1/4 in	21 in
Bottom Opening Width- At Edge	S&K013	At bottom edge	true	Half	1/4 in	21 in
Bottom Hem Height	S&K014	Bottom edge to stitch line or trim seam	false	Full	1/8 in	3/4 in
Sleeve Length from CB Neck	S&K032	3-point measure from CB Neck to shoulder point to sleeve edge	true	Full	1/2 in	34 1/2 in
Armhole Drop	S&K016	Below HPS - measure perpendicular	false	Full	1/4 in	11 1/4 in
Bicep Width	S&K017	1" below armhole- edge to edge	false	Half	1/4 in	8 in
Forearm Width	S&K033	9" up from sleeve cuff edge	false	Half	1/4 in	6 1/4 in
Sleeve Opening Width- At Seam	S&K034	Width at Seam	false	Half	1/4 in	4 3/4 in
Sleeve Opening Width- At Edge	S&K73	At edge	false	Half	1/4 in	3 3/4 in
Sleeve Cuff Height	S&K36	Cuff edge to seam	false	Full	1/8 in	2 1/2 in
Front + Back Yoke Height - From HPS	97paYa		true	Full	1/8 in	5 1/2 in
WL Chest Artwork Placement from HPS to Top Edge	pNF2OK		true	Full	0 in	7 1/2 in
WL Chest Artwork Placement out from the CF Line	S&K022		false	Full	1/8 in	1 3/4 in
CB Artwork Placement below CB Neck Seam	S&K109	From CB Neck Seam to Top Edge of Artwork	false	Full	1/8 in	5 3/4 in
Loop Label Placement at Sideseam	S&K023	Bottom edge to bottom of loop label, at the WL side seam	false	Full	1/8 in	7 in





Development - Sarah Tota

CREATED ON JUL 21, 2025 5:54 PM

FW26CT003 LS Mesh Unisphere Tee  
Date: 7/21/25  
Status: Requesting 1st proto  
TD: Anastasiya

Fit: Follow fit of FB10 Long Sleeve T-Shirt Fit Block + Add Yoke

fit: tham khảo FB10 + thêm đô sau

COMPONENT		QTY	1.  PROTO
FABRIC			
1	<b>WYU2308-4</b> CODE: WYU2308-4 UA COTTON MESH Placement: BODY, SLEEVES, INTERIOR CB NECK TAPE Notes: FOLLOW APPROVED WASH AS FW25CT026 Supplier: UNAVAILABLE Width: 160CM Weight: 250GSM Country of Origin: VIETNAM		-  Shitake Custom Code: 18-1015 TCX  Price: 7.20
2	<b>WYU1024-2</b> CODE: WYU1024-2 RIB Placement: NECK TRIM, SLEEVE CUFFS Notes: 1X1 RIB, DOUBLED Supplier: UNAVAILABLE		-  Shitake Custom Code: 18-1015 TCX  Price: 0.00
3	<b>ARTWORK</b> CODE: AS CORRESPONDING FILE Placement: WL CHEST Notes: FOLLOW ARTWORK FILE AND POM Supplier: Factory Sourced		- ARTWORK  Price: 0.00
4	<b>ARTWORK</b> CODE: AS CORRESPONDING FILE Placement: CB BODY Notes: FOLLOW ARTWORK FILE AND POM Supplier: Factory Sourced		- ARTWORK  Price: 0.00
LABEL AND TRIM PACKAGE			
5	<b>ALD Woven Loop Label</b> CODE: ALD-ML02 Placement: WL SIDE SEAM Notes: FOLLOW POM Supplier: Colonial	1	-  Parmesan Base / Gold Text  Price: 0.00
6	<b>ALD WOVEN TOP INSERT LABEL (SMALL)</b> CODE: ALD-ML133 Placement: INTERIOR CENTER BACK NECK Supplier: Colonial Country of Origin: CHINA	1 M	- ALD WOVEN TOP INSERT LABEL (SMALL) SIZE VARIANTS: ALPHA Price: 175.00
Components 6			Total 175.00