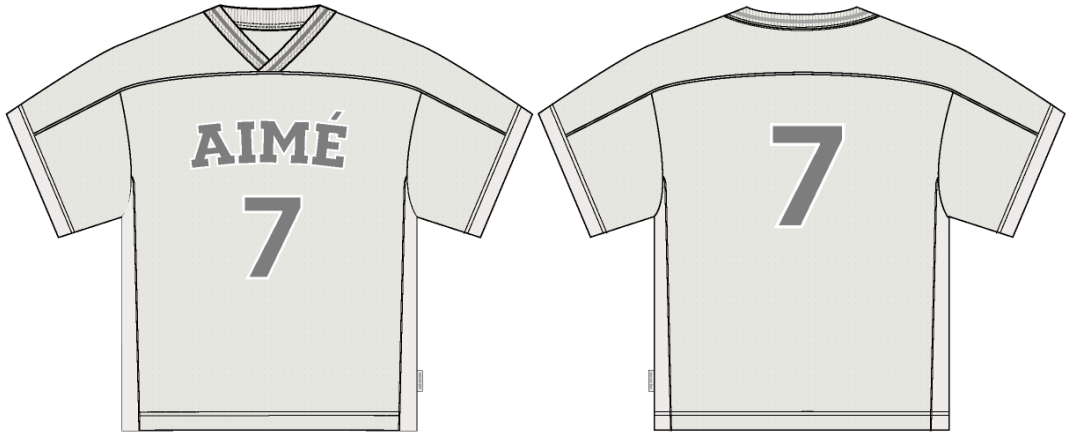




Mesh Jersey

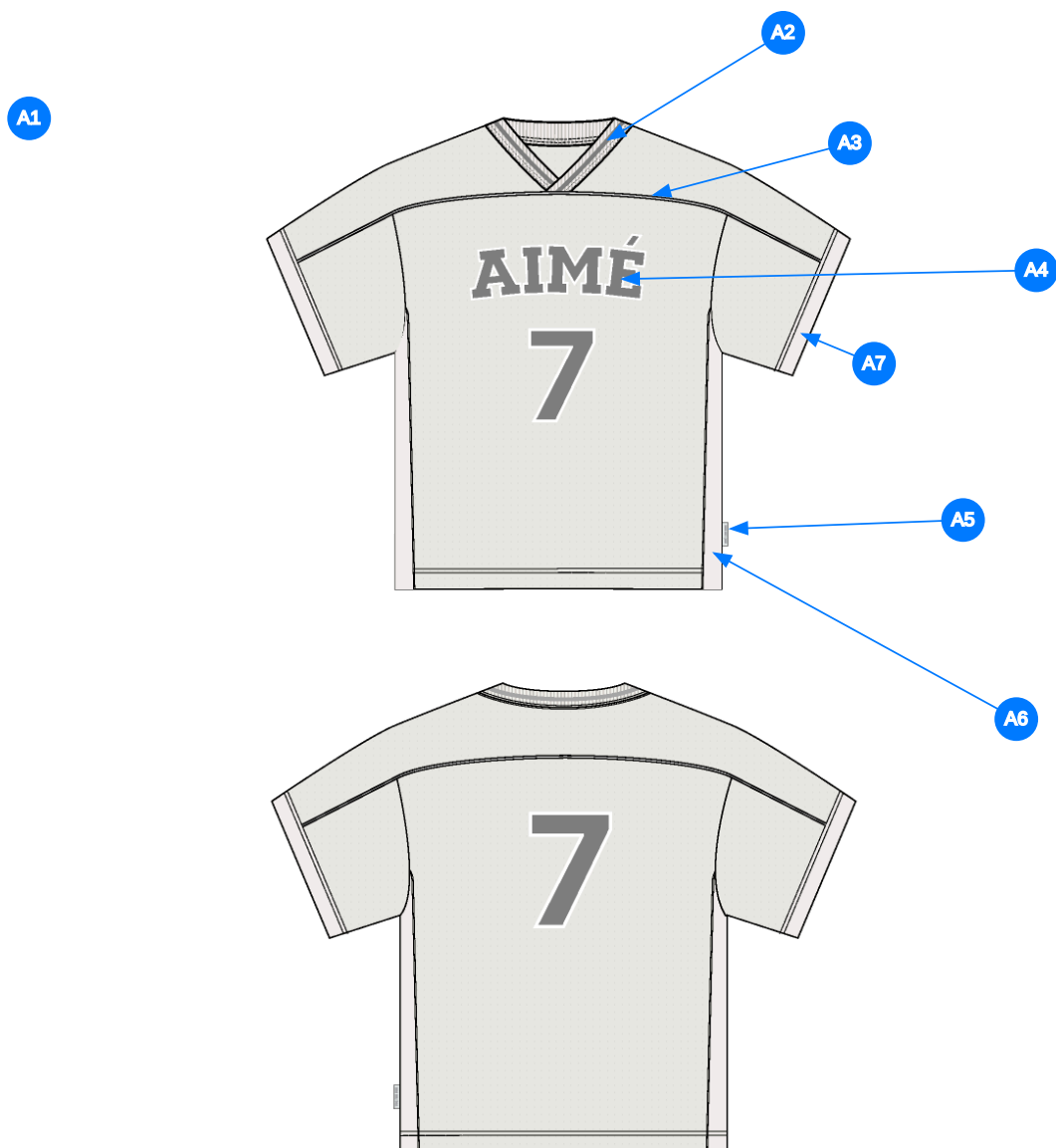
Name	Mesh Jersey
Style No.	FW26CT009
Division	Mens
Category	Tees
Season	Fall/Winter
Year	2026
Size Scale	<div>M</div> -Sample size <div><div>XS</div><div>S</div><div>M</div><div>L</div><div>XL</div><div>XXL</div></div>
Style Status	Development
Factory	UN-AVAILABLE
Designer Name	Wes
TD Name	Anastasiya
Created by/Author	8/18/2025 Jeni Fitzgerald jeni.fitzgerald@aimeleondore.com



1_B&W-1



2_CLR-1

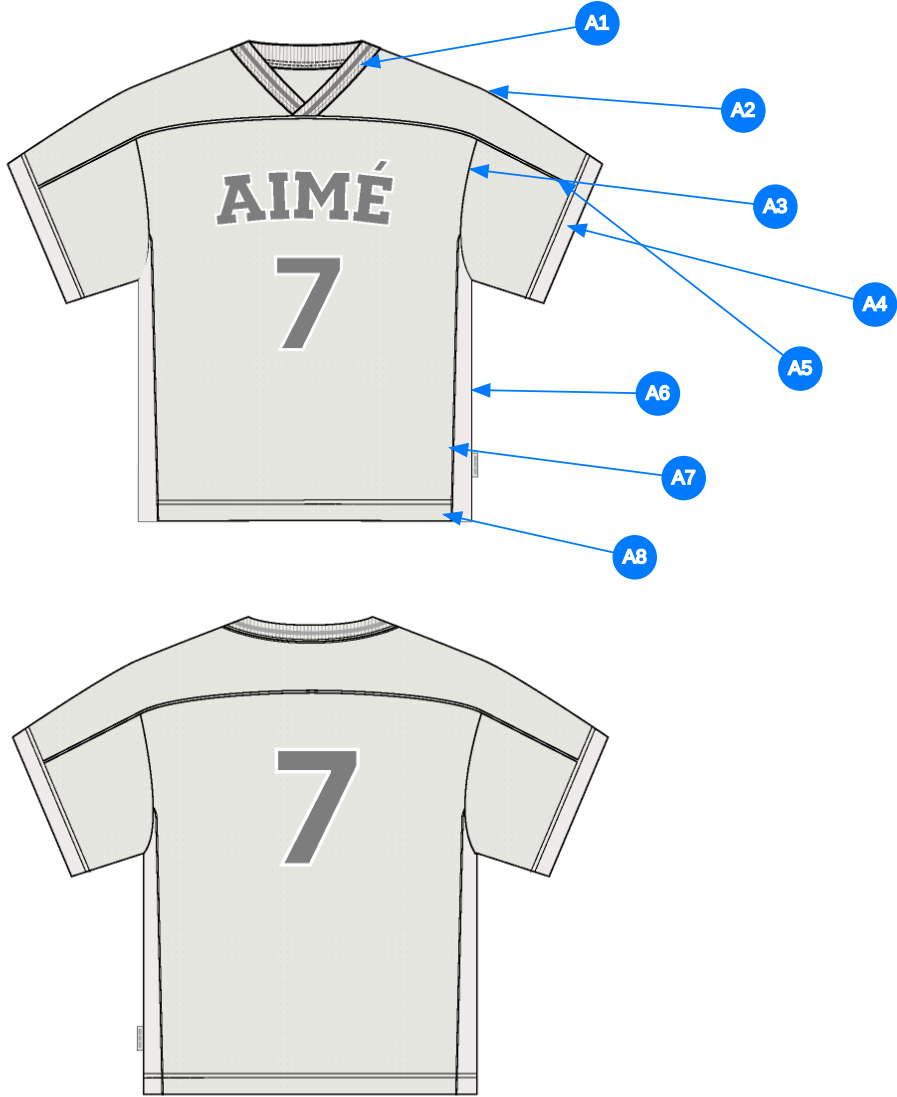


Comments (7)

- A1** FIT: CROPPED PRACTICE JERSEY (SS25CT039)
- A2** 1X1 RIB DOUBLED @ NECK TRIM - POLY TAPE @ BACK NECK - SEE ADDITIONAL FILE FOR STRIPE ARTWORK DETAILS
- A3** YOKE @ FRONT - PIPING ALONG YOKE SEAM
- A4** ARTWORK @ CF -SEE ADDITIONAL FILE FOR ARTWORK DETAILS
- A5** WOVEN LABEL @ SIDE SEAM
- A6** INSET PANELS @ SIDES - POLY DAZZLE
- A7** SLEEVE CUFF IN POLY DAZZLE

1. fit: tham khảo SS25CT039
2. rib 1x1 gấp đôi tại bo cổ - dây tape viền cổ sau
3. đồ trước - với dây piping dọc đường may đô
4. artwork tại giữa trước
5. nhãn cờ tại sườn ngoài
6. phối sườn bằng vải poly tricot
7. lai tay bằng vải poly tricot

3_Construction Details-1



Comments (8)

- A1 1/8" SN TS @ NECK
- A2 CLEAN SEAM FINISH @ SHOULDER
- A3 CLEAN SEAM FINISH @ ARMHOLE
- A4 1/4" DN TS @ SLEEVE HEM
- A5 CLEAN SEAM FINISH @ YOKE
- A6 CLEAN SEAM FINISH @ SIDE SEAM
- A7 CLEAN SEAM FINISH @ PANELS
- A8 1/4" DN TS @ BOTTOM HEM

- 1. điều 1 kim 1/8" tại cổ
- 2. may sạch tại vai
- 3. may sạch tại nách
- 4. điều 2 kim 1/4" tại lại tay
- 5. may sạch tại đô
- 6. may sạch tại sườn
- 7. may sạch tại phối
- 8. điều 2 kim 1/4" tại lại áo

4_Stitching Details-1

GARMENT REFERENCE
FOLLOW FOR BODY & PANELLING



5_Garment Reference-1

Sample Size: M

POINT OF MEASURE	CODE	HOW TO MEASURE	CRITICAL	TYPE	TOLERANCE	M
Front Body Length	S&K01	HPS to bottom edge	true	Full	1/4 in	25 1/4 in
Back Body Length	S&K02	CB neck seam to bottom edge	true	Full	1/4 in	23 3/4 in
Front Neck Drop	S&K04	HPS to neck seam	false	Full	1/8 in	4 1/2 in
Back Neck Drop	S&K05	HPS to neck seam	false	Full	1/8 in	1 1/4 in
Back Neck Width	S&K06	Seam to seam at back neck, at HPS point	false	Full	1/4 in	8 in
Neck Trim Height	S&K020	Neck Seam to trim edge	false	Full	1/8 in	1 1/8 in
Shoulder Slope	S&K08	9" From CB	false	Full	1/4 in	1/2 in
Front/Back Yoke Height	S&K033	HPS to yoke seam	false	Full	1/8 in	4 1/2 in
Across Shoulder Width- At Yoke	S&K259		true	Full	1/4 in	21 in
Across Front	S&K010	Straight Down from HPS, Seam Center to Seam Center	false	Half	1/4 in	21 in
Across Back	S&K011	Straight Down from HPS, Seam Center to Seam Center	false	Half	1/4 in	21 in
Chest Width	S&K012	At Bottom of Gusset Seam	true	Half	1/4 in	23 in
Bottom Opening Width- At Edge	S&K013	At bottom edge	true	Half	1/4 in	23 in
Bottom Hem Height	S&K014	Bottom edge to stitch line or trim seam	false	Full	1/8 in	7/8 in
Sleeve Length from CB Neck	S&K032	3-point measure from CB Neck to shoulder point to sleeve edge	true	Full	1/2 in	19 1/4 in
Armhole Drop	S&K016	Below Armhole Gusset Seam	false	Full	1/4 in	13 1/2 in
Sleeve Opening Width- At Edge	S&K73	At edge	false	Half	1/4 in	9 1/4 in
Sleeve Cuff Height	S&K019	Edge to seam- trim width	false	Full	1/8 in	1 1/8 in
Side Panel Width At Bottom Hem (One Side)	S&K256		false	Full	1/8 in	1 1/2 in
CF Artwork Placement below CF Neckline	S&K112		false	Full	1/8 in	3 in
CB Artwork Placement below CB Yoke Seam	S&K109	From CB neck seam to top Artwork	false	Full	1/8 in	1 1/4 in



Development Notes - Anastasiya Zolotova

CREATED ON AUG 18, 2025 5:04 PM

FW26CT009 Mesh Jersey
Date: 8/18/25
TD: Anastasiya
Sample Request: 1st Proto

Fit: Follow measurement page, construction page, and design sketch to develop a new pattern.

fit: tham khảo trang thông số, trang cấu trúc, và sketch để làm mẫu proto

COMPONENT		QTY	1.  PROTO
FABRIC			
1	IN DEV CODE: TBD Placement: BODY Notes: FOLLOW REFERENCE SAMPLE FOR QUALITY		- IN DEV Price: 0.00
2	IN DEV CODE: TBD Placement: COLLAR Notes: 1X1 RIB, DOUBLED; FOLLOW REFERENCE FOR QUALITY, FOLLOW ARTWORK FILE FOR YARN DYED STRIPE		- IN DEV Price: 0.00
3	IN DEV CODE: TBD Placement: INTERIOR CB NECK Notes: POLY TAPE		- IN DEV Price: 0.00
4	IN DEV CODE: TBD Placement: ALONG FRONT AND BACK YOKE SEAM Notes: PIPING; CLASSIC UNFILLED PIPING, DO NOT FOLLOW REFERENCE SAMPLE CORDING		- IN DEV Price: 0.00
5	IN DEV CODE: TBD Placement: SIDE BODY AND SLEEVE CUFFS Notes: POLY DAZZLE, FOLLOW REFERENCE SAMPLE FOR QUALITY		- IN DEV Price: 0.00
6	ARTWORK CODE: AS CORRESPONDING FILE Placement: CF BODY Notes: FOLLOW ARTWORK FILE AND POM Supplier: Factory Sourced		- ARTWORK Price: 0.00
7	ARTWORK CODE: AS CORRESPONDING FILE Placement: CB BODY Notes: FOLLOW ARTWORK FILE AND POM Supplier: Factory Sourced		- ARTWORK Price: 0.00
LABEL AND TRIM PACKAGE			
8	ALD WOVEN TOP INSERT LABEL (SMALL) CODE: ALD-ML133 Placement: INTERIOR CENTER BACK NECK Supplier: Colonial Country of Origin: CHINA		- ALD WOVEN TOP INSERT LABEL (SMALL) SIZE VARIANTS: ALPHA Price: 175.00
9	ALD Woven Loop Label CODE: ALD-ML02 Placement: WL SIDE SEAM Supplier: Colonial		-  Parmesan Base / Gold Text Price: 0.00
Components 9			Total 0.00