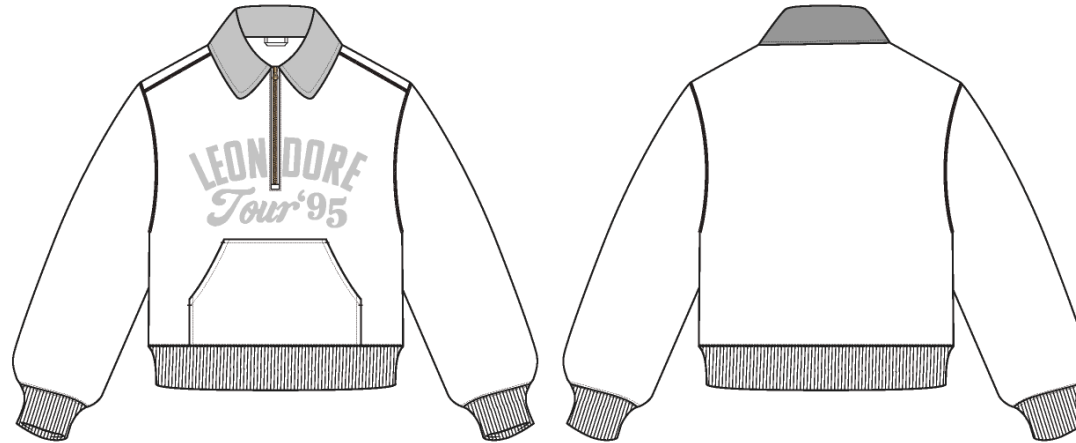


Tour '95 Half Zip

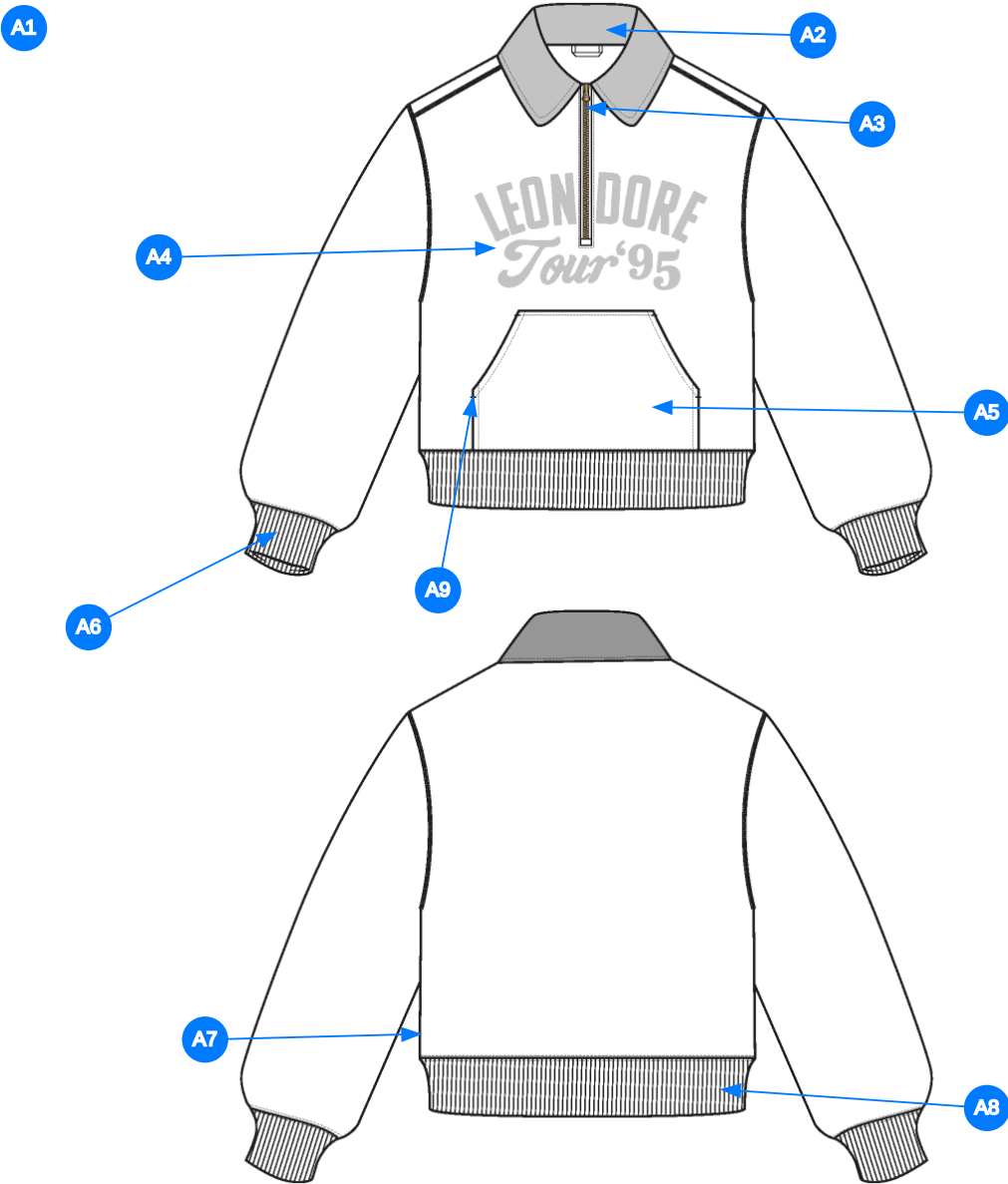
Name	Tour '95 Half Zip
Style No.	FW26CS027
Description	chainstitch embroidered half-zip
Division	Mens
Category	Sweatshirts
Season	Fall/Winter
Year	2026
Size Scale	<div>M -Sample size</div> <div><div>XS</div><div>S</div><div>M</div><div>L</div><div>XL</div><div>XXL</div></div>
Factory	UN-AVAILABLE
Created by/Author	9/26/2025 Anastasiya Zolotova anastasiya.zolotova@aimeleondore.com



1_B&W-1



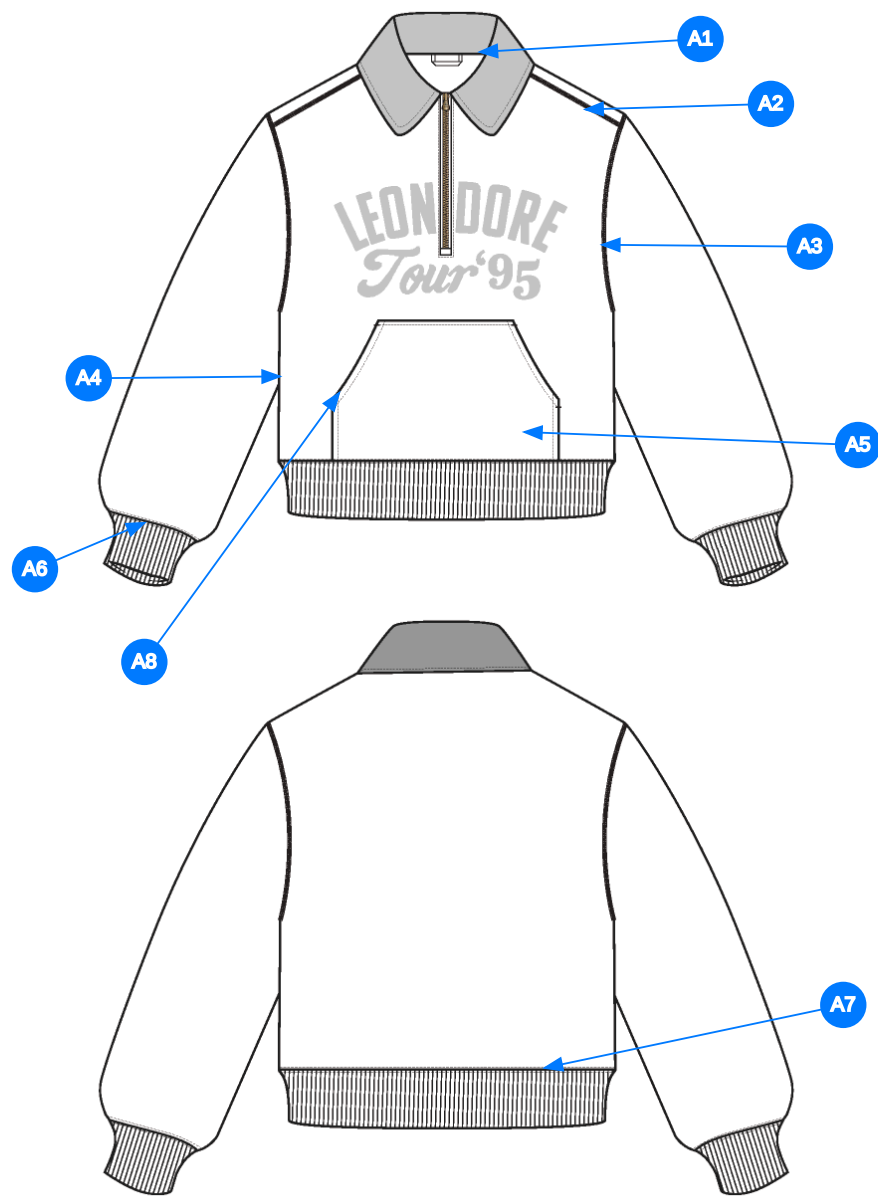
2_CLR-1



Comments (9)

- A1 FIT: (SS26CS001)
- A2 2X2 RIB DOUBLED @ COLLAR
- A3 ZIPPER CLOSURE @ CF
- A4 CHAINSTITCH EMBROIDERY ARTWORK @ CF CHEST - SEE SEPARATE FILE FOR ARTWORK DETAILS
- A5 KANGAROO POCKET @ FRONT BODY
- A6 2X2 RIB DOUBLED @ SLEEVE CUFF
- A7 ALD WOVEN LABEL @ SIDE SEAM
- A8 2X2 RIB DOUBLED @ BOTTOM HEM
- A9 BAR TACKS @ POCKET OPENINGS

3_Construction Details-1



Comments (8)

- A1 1/4" SNTS @ COLLAR
- A2 STRADDLE STITCH @ SHOULDER SEAM
- A3 STRADDLE STITCH @ ARMHOLE
- A4 CLEAN SEAM @ SIDE SEAM
- A5 SNES @ KANGAROO POCKET
- A6 DOUBLE NEEDLE STRADDLE @ SLEEVE CUFF
- A7 DOUBLE NEEDLE STRADDLE @ BOTTOM HEM
- A8 BAR TACKS @ POCKET OPENINGS

4_Stitching Details-1

Sample Size: M

POINT OF MEASURE	HOW TO MEASURE	CRITICAL	TYPE	TOLERANCE	M
Front Body Length	HPS to bottom edge	true	Full	1/2 in	26 3/4 in
Back Body Length	CB neck seam to bottom edge	true	Full	1/2 in	26 in
Front Neck Drop	HPS to neck seam	false	Full	1/8 in	4 in
Back Neck Drop	HPS to neck seam	false	Full	1/8 in	3/4 in
Back Neck Width	Seam to seam at back neck, at HPS point	false	Full	1/4 in	7 in
CF Zipper Length		false	Full	1/4 in	9 in
Shoulder Slope	Shoulder point perpendicular to HPS	false	Full	1/4 in	2 in
Across Shoulder	Seam to seam	false	Half	1/4 in	21 1/2 in
Across Front/Across Back Position from HPS		true	Full	0 in	7 in
Across Front	7" dwn from HPS, Seam to seam	false	Half	1/4 in	19 in
Across Back	7" dwn from HPS, Seam to Seam	false	Half	1/4 in	20 in
Chest Width	1" Below armhole- edge to edge	true	Half	1/4 in	23 in
Bottom Opening Width- Along Seam Relaxed		true	Half	1/4 in	20 in
Bottom Opening Width- At Edge	At bottom edge	true	Half	1/4 in	17 1/2 in
Bottom Hem Height	Bottom edge to stitch line or trim seam	false	Full	1/8 in	2 3/4 in
Sleeve Length from CB Neck	3-point measure from CB Neck to shoulder point to sleeve edge	true	Full	1/2 in	35 in
Armhole Drop	Below HPS - measure perpendicular	false	Full	1/4 in	12 in
Bicep Width	1" below armhole- edge to edge	false	Half	1/4 in	9 1/2 in
Forearm Width	9" up from sleeve cuff edge	false	Half	1/4 in	7 1/2 in
Sleeve Opening Width- At Seam	Width at Seam	false	Half	1/4 in	5 in
Sleeve Opening Width- At Edge	At edge	false	Half	1/4 in	3 3/4 in
Sleeve Cuff Height	Cuff edge to seam	false	Full	1/8 in	2 3/4 in
Collar Height at CB	Neck seam to collar edge at CB	false	Full	1/8 in	3 1/2 in
Collar Point Length	Neck seam to collar point, along edge	false	Full	1/8 in	3 in
Kangaroo Pocket Height At Center	Height at center	false	Full	1/4 in	9 in
Kangaroo Pocket Width at Top Edge	Width at top edge	false	Full	1/4 in	9 1/4 in
Kangaroo Pocket Width at Bottom	Width at Bottom Edge	false	Full	1/4 in	12 1/4 in
Kangaroo Pocket Opening		false	Full	1/8 in	6 1/4 in
CF Artwork Placement below CF Neckline	From CF Neck Seam to Top Edge of Artwork	false	Full	1/8 in	3 3/4 in
Loop Label Placement at Sideseam	Bottom edge to bottom of loop label, at the WL side seam	false	Full	1/8 in	7 in

Development Notes - Anastasiya Zolotova

CREATED ON SEP 26, 2025 7:14 PM

FW26CS027 Tour '95 Half Zip
Date: 9/26/25
TD: Anastasiya
Sample Request: Requesting 1st Proto

Fit: SS26CS001 Aimé Sport Quarter Zip