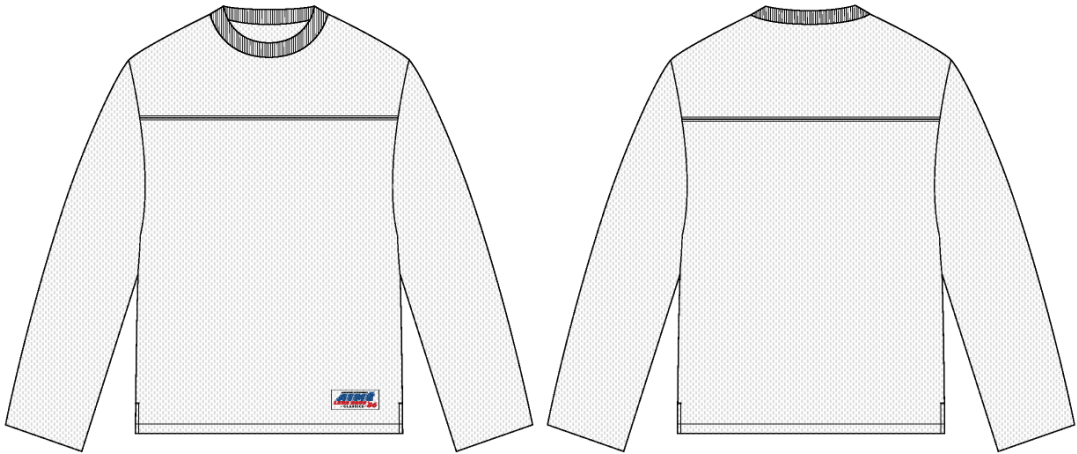


LS Football Mesh Tee

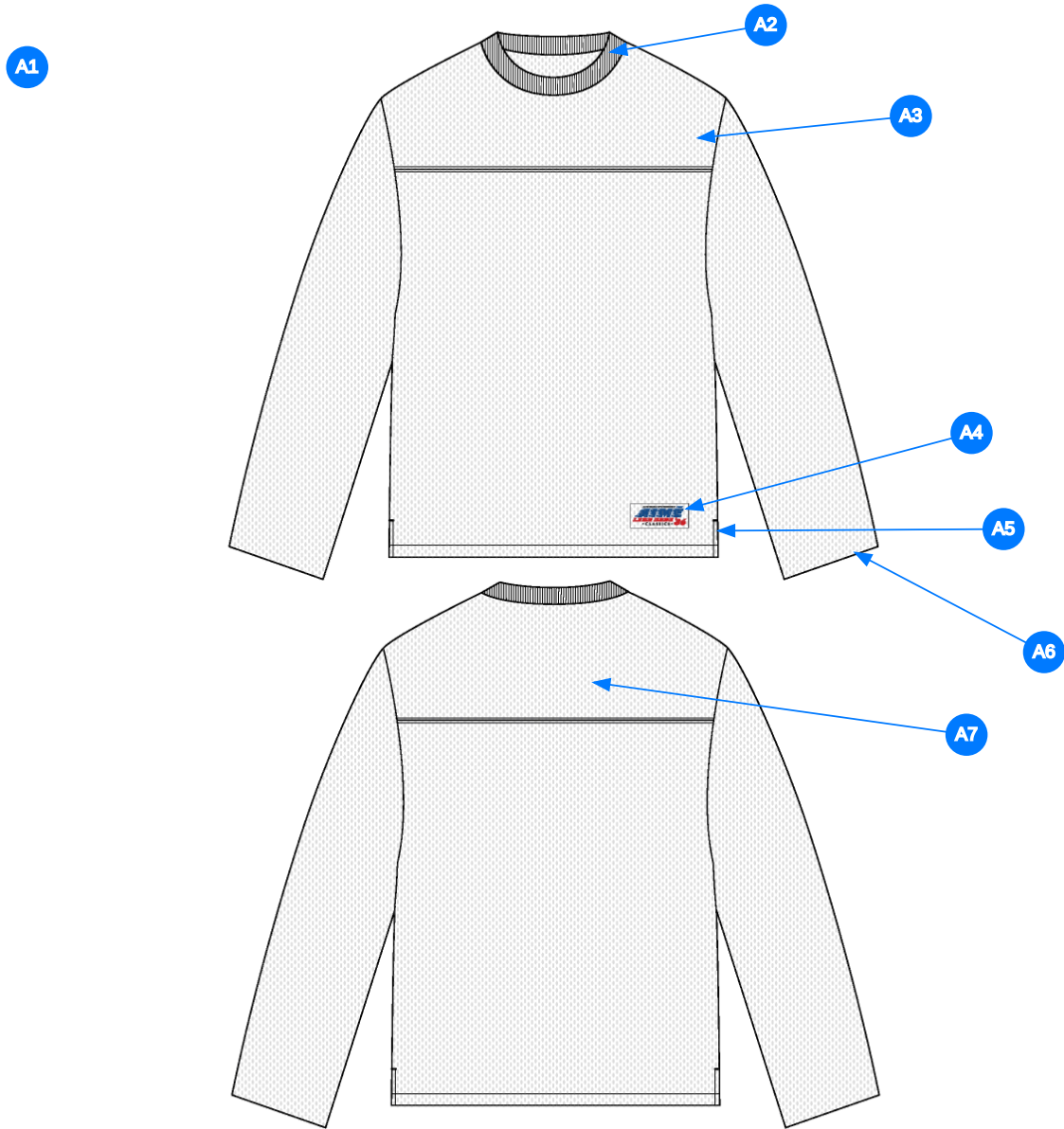
Name	LS Football Mesh Tee
Style No.	FW26CT038
Division	Mens
Category	Tees
Season	Fall/Winter
Year	2026
Size Scale	<div>M</div> -Sample size <div><div>XS</div><div>S</div><div>M</div><div>L</div><div>XL</div><div>XXL</div></div>
Style Status	Adopted
Factory	UN-AVAILABLE
Designer Name	Nils
TD Name	Anastasiya
Created by/Author	9/8/2025 Jeni Fitzgerald jeni.fitzgerald@aimeleondore.com



1_B&W-1



2_CLR-1

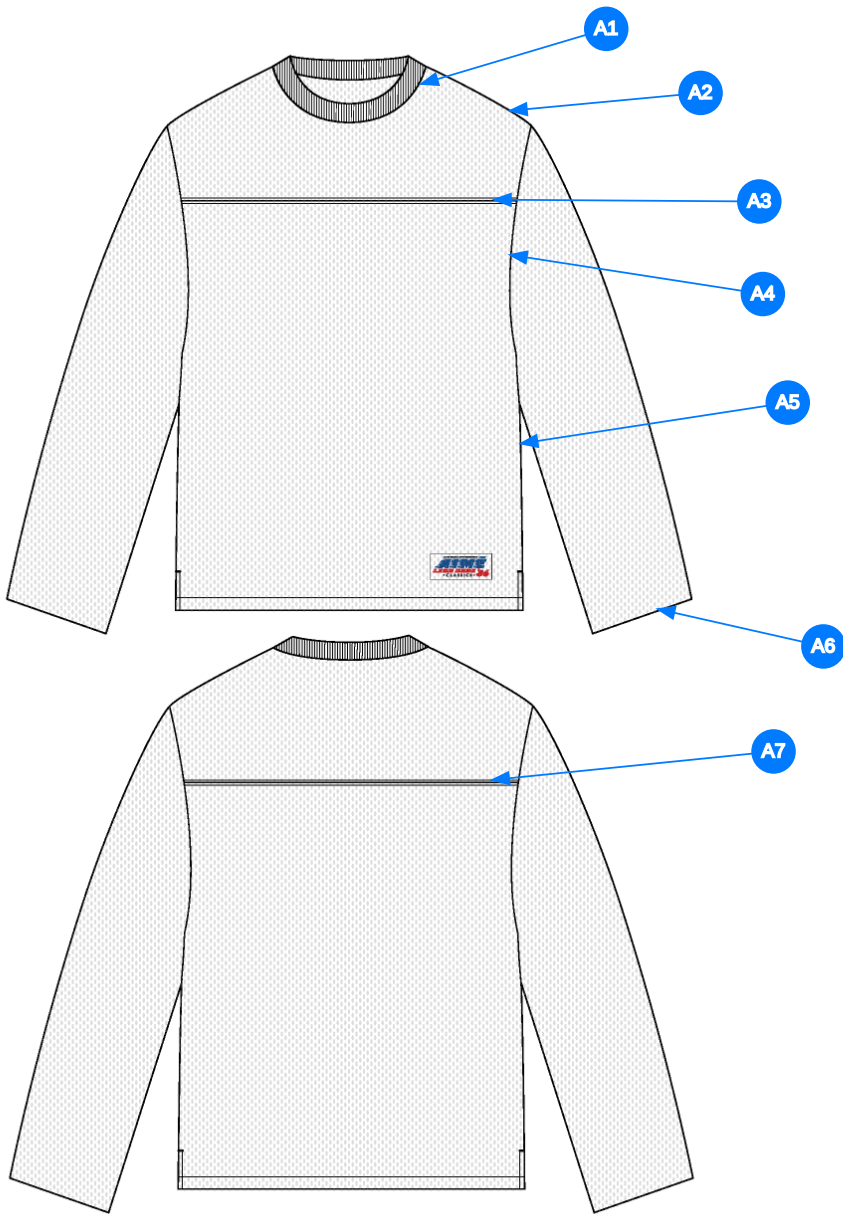


Comments (7)

- A1 FIT: LS TEE FIT BLOCK
- A2 1X1 RIB DOUBLED @ NECK - JERSEY TAPE ALONG BACK NECK
- A3 YOKE @ FRONT
- A4 ALD WOVEN LABEL @ FRONT HEM
- A5 VENT @ SIDE SEAM - TURNBACK W/ COVERLOCK STITCH
- A6 TURNBACK W/ COVERLOCK STITCH @ SLEEVE HEM
- A7 YOKE @ BACK

- 1. fit: tham khảo LS tee fit block
- 2. rib 1x1 gấp đôi tại cổ - viền cổ bằng vải chính
- 3. đô trước
- 4. nhãn trang trí tại lai trước
- 5. xẻ lai tại sườn
- 6. lai tay gấp đôi
- 7. đô sau

3_Construction Details-1



4_Stitching Details-1

- Comments (7)
- A1** STRADDLE STITCH @ NECK
 - A2** CLEAN SEAM @ SHOULDER
 - A3** STRADDLE STITCH @ FRONT YOKE
 - A4** CLEAN SEAM @ ARMHOLE
 - A5** CLEAN SEAM @ SIDE SEAM
 - A6** 1/4" DN TS @ BOTTOM HEM & SLEEVE CUFF
 - A7** STRADDLE STITCH @ BACK YOKE

- 1. điều rẽ tại cổ
- 2. may sạch tại vai
- 3. điều rẽ tại đô trước
- 4. may sạch tại nách
- 5. may sạch tại đường may sườn
- 6. điều 2 kim 1/4" tại lai tay và lai áo
- 7. điều rẽ tại đô sau

Sample Size: M

POINT OF MEASURE	CODE	HOW TO MEASURE	CRITICAL	TYPE	TOLERANCE	M
Front Body Length	S&K01	HPS to bottom edge	true	Full	1/2 in	28 in
Back Body Length	S&K02	CB neck seam to bottom edge	true	Full	1/2 in	27 1/4 in
Shoulder Seam Forward	S&K07	HPS to seam	false	Full	1/8 in	1/2 in
Shoulder Slope	S&K08	Shoulder point perpendicular to HPS	false	Full	1/4 in	2 in
Front Neck Drop	S&K04	HPS to neck seam	false	Full	1/8 in	4 1/4 in
Back Neck Drop	S&K05	HPS to neck seam	false	Full	1/8 in	3/4 in
Back Neck Width	S&K06	Seam to seam at back neck, at HPS point	false	Full	1/4 in	7 3/4 in
Minimum Neck Stretch	S&K199		true	Half	0 in	11 1/2 in
Neck Trim Height	S&K020	Neck Seam to trim edge	false	Full	1/8 in	13/16 in
Across Shoulder	S&K09	Seam to seam	false	Half	1/4 in	18 1/2 in
Across Front	S&K010	7" dwn from HPS, Seam to seam	false	Half	1/4 in	16 1/2 in
Across Back	S&K011	7" dwn from HPS, Seam to Seam	false	Half	1/4 in	17 in
Chest Width	S&K012	1" Below armhole- edge to edge	true	Half	1/4 in	21 in
Bottom Opening Width- At Edge	S&K013	At bottom edge	true	Half	1/4 in	21 in
Bottom Hem Height	S&K014	Bottom edge to stitch line or trim seam	false	Full	1/8 in	3/4 in
Sleeve Length from CB Neck	S&K032	3-point measure from CB Neck to shoulder point to sleeve edge	true	Full	1/2 in	34 1/2 in
Armhole Drop	S&K016	Below HPS - measure perpendicular	false	Full	1/4 in	11 1/4 in
Bicep Width	S&K017	1" below armhole- edge to edge	false	Half	1/4 in	8 in
Forearm Width	S&K033	9" up from sleeve cuff edge	false	Half	1/4 in	6 1/4 in
Sleeve Opening Width- At Seam	S&K034	Width at Seam	false	Half	1/4 in	4 3/4 in
Sleeve Opening Width- At Edge	S&K73	At edge	false	Half	1/4 in	3 3/4 in
Sleeve Cuff Height	S&K36	Cuff edge to seam	false	Full	1/8 in	2 1/2 in
Side Slit Height	S&K093	From bottom edge to top of slit	false	Full	1/8 in	2 in
Front/Back Yoke Placement	S&K033	HPS to yoke seam	false	Full	1/8 in	6 1/2 in
WL Hem Artwork Placement from Bottom Hem Edge	UYsvSY		true	Full	1/8 in	2 in
WL Hem Artwork Placement from Side Seam	S&K0808	To Side Edge of Artwork	false	Full	1/8 in	2 in
Loop Label Placement at Sideseam	S&K023	Bottom edge to bottom of loop label, at the WL side seam	false	Full	1/8 in	7 in

Development Notes - Anastasiya Zolotova

CREATED ON SEP 8, 2025 8:58 PM

FW26CT038 LS Football Mesh Tee
Date: 9/8/25
Status: Requesting 1st proto
TD: Anastasiya

Fit: Follow fit of FB10 Long Sleeve T-Shirt Fit Block + Add Yoke + Add side slit

fit: tham khảo fit FB10 long sleeve T-Shirt fit block thêm đô và xẻ lai

COMPONENT		QTY	1.  PROTO
FABRIC			
1	WYU2308-4 CODE: WYU2308-4 UA COTTON MESH Placement: BODY, SLEEVES, INTERIOR CB NECK TAPE Notes: FOLLOW APPROVED WASH AS FW25CT026 Supplier: UNAVAILABLE Width: 160CM Weight: 250GSM Country of Origin: VIETNAM		-  Coconut Milk Custom Code: 11-0608 TCX Price: 7.20
2	WYU1024-2 CODE: WYU1024-2 RIB Placement: NECK TRIM, SLEEVE CUFFS Notes: 1X1 RIB, DOUBLED Supplier: UNAVAILABLE		-  Coconut Milk Custom Code: 11-0608 TCX Price: 0.00
LABEL AND TRIM PACKAGE			
3	IN DEV CODE: TBD Placement: WL FRONT HEM Notes: ARTICLE # TBD		- IN DEV Price: 0.00
4	ALD Woven Loop Label CODE: ALD-ML02 Placement: WL SIDE SEAM Notes: FOLLOW POM Supplier: Colonial	1	-  Parmesan Base / Gold Text Price: 0.00
5	ALD WOVEN TOP INSERT LABEL (SMALL) CODE: ALD-ML133 Placement: INTERIOR CENTER BACK NECK Supplier: Colonial Country of Origin: CHINA	1 M	- ALD WOVEN TOP INSERT LABEL (SMALL) SIZE VARIANTS: ALPHA Price: 175.00
Components 5			Total 175.00