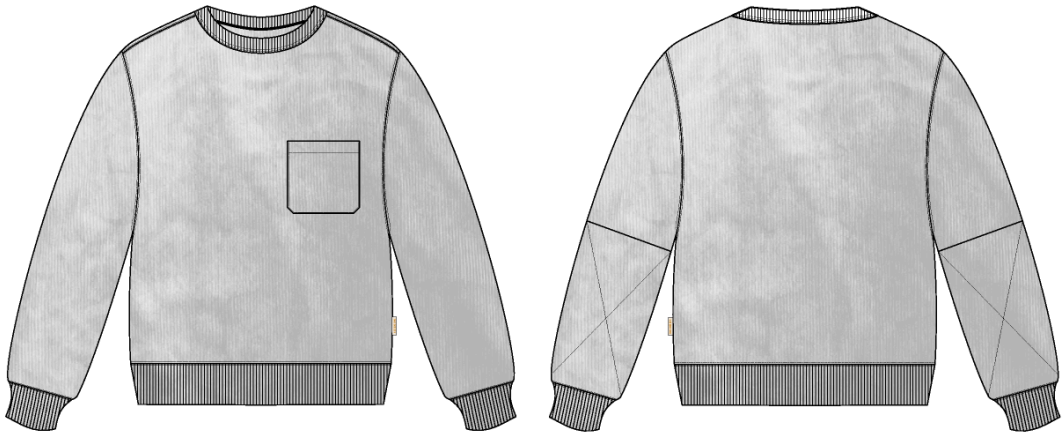


Name	Pocket Crewneck
Style No.	FW26CS006
Division	Mens
Category	Sweatshirts
Season	Fall/Winter
Year	2026
Size Scale	M -Sample size
	XS S M L XL XXL
Style Status	Development
Factory	UN-AVAILABLE
Designer Name	Wes
TD Name	Anastasiya
Created by/Author	8/18/2025 Jeni Fitzgerald jeni.fitzgerald@aimeleondore.com

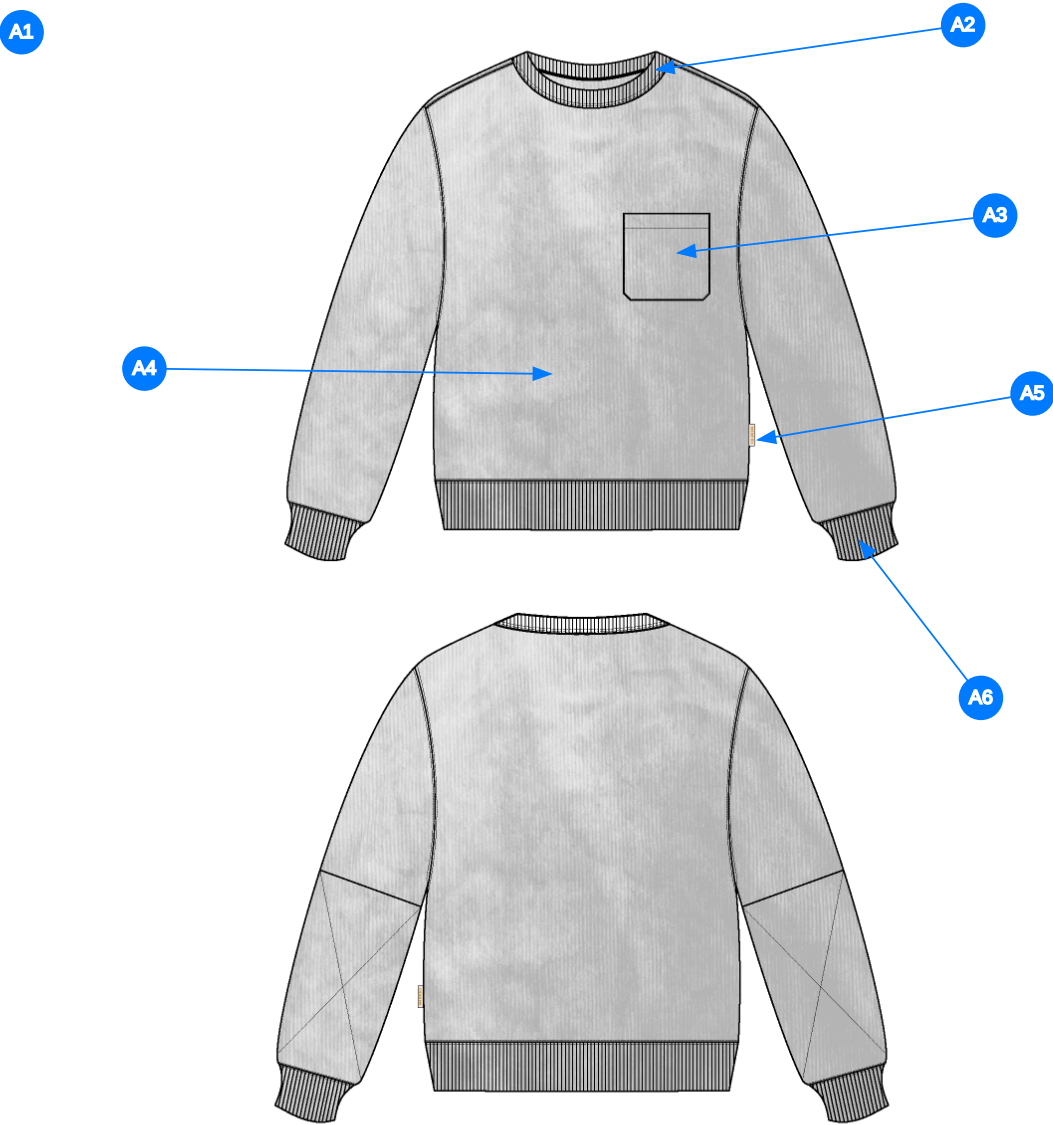
Pocket Crewneck



1_B&W-1



2_CLR-1

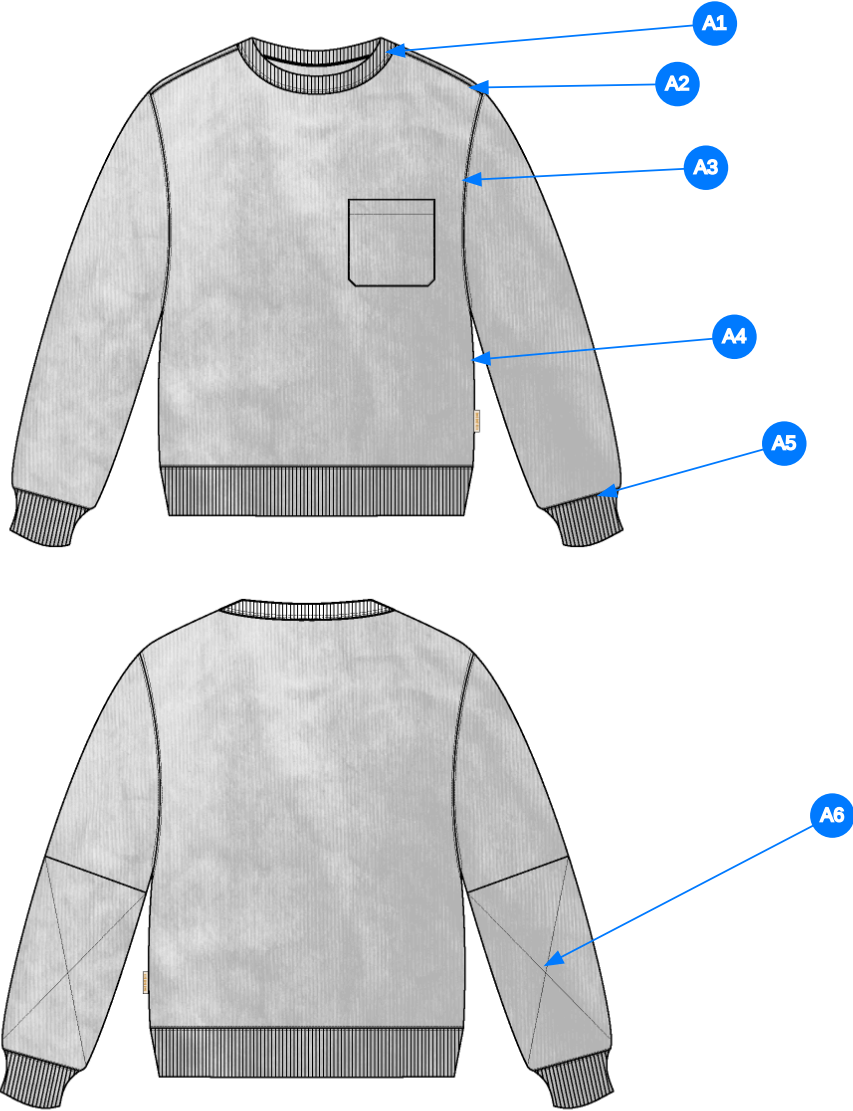


Comments (6)

- A1 FIT: PORSCHE CREWNECK (FW24CS009)
- A2 BOUND COLLAR @ NECK TRIM
- A3 SELF FABRIC PATCH POCKET @ WL CHEST
- A4 LUNA DYED APPLIED WASH -SAME AS PORSCHE CREWNECK (FW25CS009)
- A5 WOVEN LABEL @ SIDE SEAM
- A6 2X2 RIB DOUBLED @ SLEEVE CUFFS & BOTTOM HEM

- 1. fit: tham khảo porsche crewneck (FW24CS009)
- 2. bo cổ viền
- 3. túi bằng vải chính tại ngực trái
- 4. thêm luna wash
- 5. nhãn cờ tại sườn ngoài
- 6. rib 2 lớp tại lai tay và lai áo

3_Construction Details-1



Comments (6)

- A1 1/4" DN TS @ BOUND COLLAR
- A2 STRADDLE STITCH @ SHOULDER
- A3 STRADDLE STITCH @ ARMHOLE
- A4 CLEAN SEAM FINISH @ SIDE SEAM
- A5 STRADDLE STITCH @ SLEEVE CUFFS & BOTTOM HEM
- A6 SN TS @ BACK SLEEVE PANEL

1. điều 2 kim 1/4" tại cổ viền
2. điều rã tại vai
3. điều rã tại nách
4. may sạch tại đường may sườn
5. điều rã tại lai tay và lai áo
6. điều 1 kim tay sau

4_Stitching Details-1

Sample Size: M

POINT OF MEASURE	CODE	HOW TO MEASURE	CRITICAL	TYPE	TOLERANCE	M
Front Body Length	S&K01	HPS to bottom edge	true	Full	1/2 in	27 in
Back Body Length	S&K02	CB neck seam to bottom edge	true	Full	1/2 in	25 3/4 in
Shoulder Seam Forward	S&K07	HPS to seam	false	Full	1/8 in	1/2 in
Shoulder Slope	S&K08	Shoulder point perpendicular to HPS	false	Full	1/4 in	2 in
Front Neck Drop	S&K04	HPS to neck seam	false	Full	1/8 in	4 in
Back Neck Drop	S&K05	HPS to neck seam	false	Full	1/8 in	1 1/4 in
Back Neck Width	S&K06	Seam to seam at back neck, at HPS point	false	Full	1/4 in	7 3/4 in
Neck Trim Height	S&K020	Neck Seam to trim edge	false	Full	1/8 in	13/16 in
Minimum Neck Stretch	S&K199		true	Half	0 in	11 1/2 in
Across Shoulder	S&K09	Seam to seam	false	Half	1/4 in	20 1/2 in
Across Front/Across Back Position from HPS	eos7YR		true	Full	0 in	7 in
Across Front	S&K010	Down from HPS, Seam to seam	false	Half	1/4 in	19 in
Across Back	S&K011	Down from HPS, Seam to Seam	false	Half	1/4 in	19 1/2 in
Chest Width	S&K012	1" Below armhole- edge to edge	true	Half	1/4 in	22 3/4 in
Bottom Opening 2" Above Rib Knit Seam	S&K		true	Half	1/4 in	21 3/4 in
Bottom Opening Width- At Seam	S&K108	Straight with seam relaxed	true	Half	1/2 in	20 1/4 in
Bottom Opening Width- At Edge	S&K013	At bottom edge	true	Half	1/4 in	17 in
Bottom Hem Height	S&K014	Bottom edge to stitch line or trim seam	false	Full	1/8 in	2 3/4 in
Sleeve Length from CB Neck	S&K032	3-point measure from CB Neck to shoulder point to sleeve edge	true	Full	1/2 in	35 in
Armhole Drop	S&K016	Below HPS - measure perpendicular	false	Full	1/4 in	12 1/2 in
Bicep Width	S&K017	1" below armhole- edge to edge	false	Half	1/4 in	9 1/2 in
Forearm Width	S&K033	9" up from sleeve cuff edge	false	Half	1/4 in	7 1/4 in
Sleeve Opening Width 1" Above Rib Knit Seam	S&K		true	Half	1/4 in	5 3/8 in
Sleeve Opening Width- At Seam	S&K034	Width at Seam	false	Half	1/4 in	4 3/4 in
Sleeve Opening Width- At Edge	S&K73	At edge	false	Half	1/4 in	3 3/4 in
Sleeve Cuff Height	S&K36	Cuff edge to seam	false	Full	1/8 in	2 3/4 in
WL Chest Pocket Placement from HPS	RNGu3		false	Full	1/8 in	7 3/4 in
WL Chest Pocket Placement from HPS	W8aKTO		false	Full	1/8 in	1 3/4 in
WL Chest Pocket Width	0fNZ2I		false	Full	1/8 in	4 1/4 in
WL Chest Pocket Height	3RH8UD		false	Full	1/8 in	4 3/4 in
WL Chest Pocket Hem Height	9y3ygC		false	Full	1/8 in	3/4 in
Back Sleeve Stitching Height - Rib Seam to Top Edge	leeA0c		false	Full	1/8 in	11 in
Loop Label Placement at Sideseam	S&K023	Bottom edge to bottom of loop label, at the WL side seam	false	Full	1/8 in	7 in

Development Notes - Anastasiya Zolotova

CREATED ON AUG 18, 2025 5:59 PM

FW26CS006 Pocket Crewneck

Date: 8/18/25

TD: Anastasiya

Sample Request: 1st Proto

Fit: Follow CN Block (NOSCS002) w/below updates

-Add WL chest pocket

-Add top stitching at back sleeve following sketch

+Top Stitching Height from Rib Seam to Top Edge - 11"

+Top Stitching Width from sleeve fold to sleeve inseam






Fit: tham khảo NOSCS002 với update bên dưới:

- thêm túi tại ngực trái

- thêm điều tại thân sau tay như sketch

+ cao đường điều từ đường may bo đến mép trên 11"

+ rộng điều từ nếp gấp tay đến sườn trong tay

COMPONENT		QTY	1.  PROTO
FABRIC			
1	UA Loop Back Heavy Fleece CODE: C2300234 French Terry Placement: BODY, PATCH POCKET Notes: LUNA DYE AS REFERENCE IMAGE Supplier: UNAVAILABLE Weight: 560gsm		-  Jet Black Custom Code: 19-0303 TCX Price: 0.00
2	UA 2x2 Terry Rib CODE: C2300246 Placement: NECK TRIM, CUFFS, HEM Notes: 2X2 RIB, BOUND AT NECK TRIM Supplier: UNAVAILABLE		-  Jet Black Custom Code: 19-0303 TCX Price: 0.00
3	UA Herringbone Tape CODE: ALTAPE1 Placement: STRADDLED OVER BACK NECK SEAM F/ SH TO SH Supplier: UNAVAILABLE		-  Jet Black Custom Code: 19-0303 TCX Width: 3/8" Price: 0.00
LABEL AND TRIM PACKAGE			
4	ALD Woven Main Label W/ Size CODE: ALD-ML03 Placement: INTERIOR CENTER BACK NECK Supplier: Colonial Country of Origin: CHINA	1 Piece	- ALD Woven Main Label W/ Size Price: 0.079
5	ALD Woven Loop Label CODE: ALD-ML02 Placement: WEARER'S LEFT SIDE SEAM (FOLLOW POM) Supplier: Colonial	1	-  Parmesan Base / Gold Text Price: 0.00
Components 5			Total 0.079