

Script Crewneck

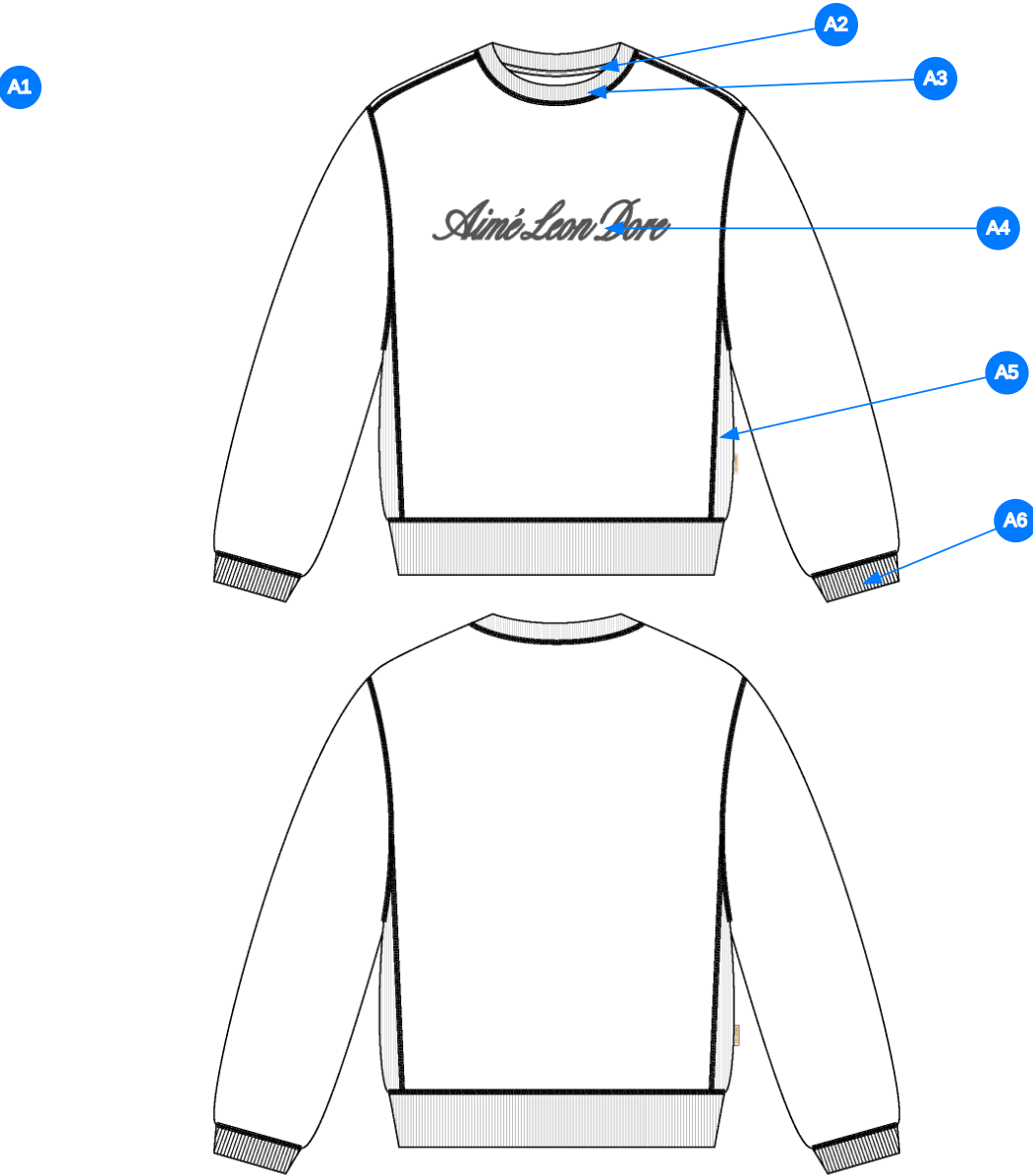
Name	Script Crewneck
Style No.	FW26CS019
Division	Mens
Category	Sweatshirts
Season	Fall/Winter
Year	2026
Size Scale	<div>M</div> -Sample size <div><div>XS</div><div>S</div><div>M</div><div>L</div><div>XL</div><div>XXL</div></div>
Style Status	Adopted
Factory	UN-AVAILABLE
COO	VIETNAM
Designer Name	Nils
TD Name	Anastasiya
Created by/Author	12/12/2025 Anastasiya Zolotova anastasiya.zolotova@aimeleondore.com



1\_B&W-1



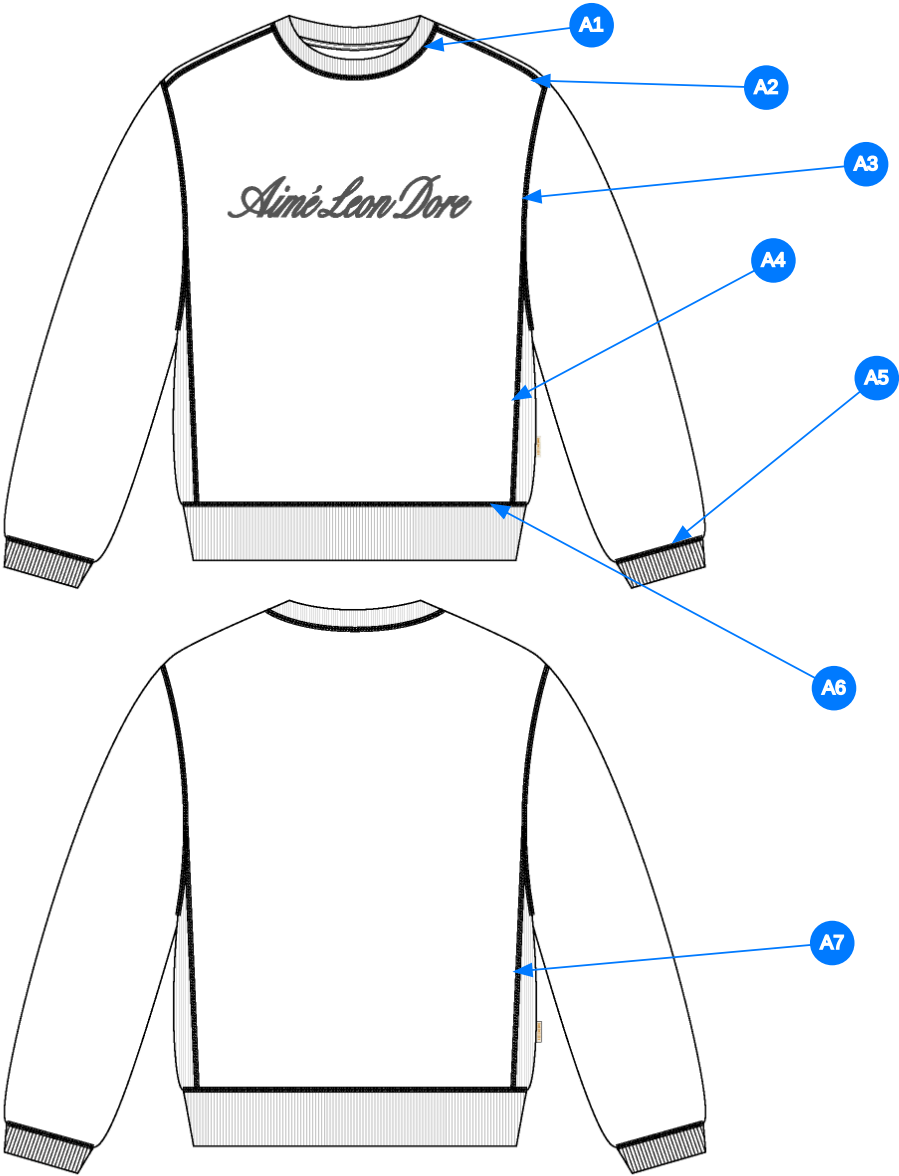
2\_CLR-1



Comments (6)

- A1** FIT: LARGE SCRIPT CREWNECK (FW25CS007)
- A2** HERRINGBONE TAPE @ CB NECK
- A3** 2X2 RIB DOUBLED @ NECK TRIM
- A4** PRINTED ARTWORK @ CF BODY
- A5** 2X2 RIB @ SIDE SEAM - ONE PANEL CONSTRUCTION - DOUBLE THE RIB PANEL
- A6** 2X2 RIB DOUBLED @ SLEEVE CUFFS & BOTTOM HEM

3\_Construction Details-1



Comments (7)

- A1** COVERLOCK STITCH @ NECK
- A2** COVERLOCK STITCH @ SHOULDER
- A3** COVERLOCK STITCH @ ARMHOLE
- A4** COVERLOCK STITCH @ SET IN PANEL
- A5** COVERLOCK STITCH @ SLEEVE CUFFS
- A6** COVERLOCK STITCH @ BOTTOM HEM
- A7** COVERLOCK STITCH @ SET IN PANEL

4\_Stitching Details-1

Measured Size: M

POINT OF MEASURE	HOW TO MEASURE	CRITICAL	TYPE	TOLERANCE	EXPECTED	1ST PROTO - RCVD	VARIANCE	ADJUST BY +/-	REVISED SPEC	MEASUREMENT NOTES
Front Body Length	HPS to bottom edge	true	Full	1/2 in	27 in	27 1/4 in	1/4 in	0 in	27 in	
Back Body Length	CB neck seam to bottom edge	true	Full	1/2 in	25 3/4 in	26 in	1/4 in	0 in	25 3/4 in	
Shoulder Seam Forward	HPS to seam	false	Full	1/8 in	1/2 in	1/4 in	-1/4 in	0 in	1/2 in	Back to Spec
Shoulder Slope	Shoulder point perpendicular to HPS	false	Full	1/4 in	1 3/4 in	2 in	1/4 in	0 in	1 3/4 in	
Front Neck Drop	HPS to neck seam	false	Full	1/8 in	4 in	3 7/8 in	-1/8 in	0 in	4 in	
Back Neck Drop	HPS to neck seam	false	Full	1/8 in	1 1/4 in	1 3/8 in	1/8 in	0 in	1 1/4 in	
Back Neck Width	Seam to seam at back neck, at HPS point	false	Full	1/4 in	7 3/4 in	7 5/8 in	-1/8 in	0 in	7 3/4 in	
Neck Trim Height	Neck Seam to trim edge	false	Full	1/8 in	13/16 in	1 in	3/16 in	0 in	13/16 in	Back to Spec
Minimum Neck Stretch		true	Half	0 in	11 1/2 in	11 1/2 in	0 in	0 in	11 1/2 in	
Across Shoulder	Seam to seam	false	Half	1/4 in	20 1/2 in	20 3/8 in	-1/8 in	0 in	20 1/2 in	
Across Front/Across Back Position from HPS		true	Full	0 in	7 in	7 in	0 in	0 in	7 in	
Across Front	Down from HPS, Seam to seam	false	Half	1/4 in	19 in	19 in	0 in	0 in	19 in	
Across Back	Down from HPS, Seam to Seam	false	Half	1/4 in	19 1/2 in	19 3/8 in	-1/8 in	0 in	19 1/2 in	
Chest Width	1" Below armhole- edge to edge	true	Half	1/4 in	22 3/4 in	22 3/4 in	0 in	0 in	22 3/4 in	
Bottom Opening 2" Above Rib Knit Seam - Extended		true	Half	1/4 in	21 3/4 in	21 3/4 in	0 in	0 in	21 3/4 in	
Bottom Opening Width- Along Seam Relaxed		true	Half	1/2 in	20 1/4 in	20 in	-1/4 in	0 in	20 1/4 in	
Bottom Opening Width- At Edge	At bottom edge	true	Half	1/4 in	17 in	17 1/4 in	1/4 in	0 in	17 in	
Bottom Hem Height	Bottom edge to stitch line or trim seam	false	Full	1/8 in	2 3/4 in	2 7/8 in	1/8 in	0 in	2 3/4 in	
Side Panel Body Width - Total	Seam to Seam	true	Full	1/8 in	5 1/2 in	5 3/4 in	1/4 in	0 in	5 1/2 in	Back to Spec
Sleeve Length from CB Neck	3-point measure from CB Neck to shoulder point to sleeve edge	true	Full	1/2 in	35 in	34 3/4 in	-1/4 in	0 in	35 in	
Sleeve Cap Height		true	Full	1/8 in	0 in	0 in	0 in	0 in	0 in	Fty to advise
Armhole Drop	Below HPS - measure perpendicular	false	Full	1/4 in	12 1/2 in	12 1/4 in	-1/4 in	0 in	12 1/2 in	
Bicep Width	1" below armhole- edge to edge	false	Half	1/4 in	9 1/2 in	9 3/8 in	-1/8 in	0 in	9 1/2 in	
Forearm Width	9" up from sleeve cuff edge	false	Half	1/4 in	7 1/4 in	7 1/4 in	0 in	0 in	7 1/4 in	
Sleeve Opening Width 1" Above Rib Knit Seam - Extended		true	Half	1/4 in	5 3/8 in	5 1/2 in	1/8 in	0 in	5 3/8 in	
Sleeve Opening Width- At Edge	At edge	false	Half	1/4 in	3 3/4 in	3 7/8 in	1/8 in	0 in	3 3/4 in	
Sleeve Opening Width- At Seam	Width at Seam	false	Half	1/4 in	4 3/4 in	4 3/4 in	0 in	0 in	4 3/4 in	
Sleeve Cuff Height	Cuff edge to seam	false	Full	1/8 in	2 3/4 in	2 7/8 in	1/8 in	0 in	2 3/4 in	
CF Artwork Placement below CF Neckline	From CF Neck Seam to Top Edge of Artwork	false	Full	1/8 in	3 3/4 in	3 3/4 in	0 in	-1/4 in	3 1/2 in	Follow Revised
Loop Label Placement at Sideseam	Bottom edge to bottom of loop label, at the WL side seam	false	Full	1/8 in	7 in	7 in	0 in	0 in	7 in	

1st Proto - Anastasiya Zolotova

CREATED ON DEC 12, 2025 9:37 PM  
1ST PROTO: SIZE:M, CREATED AT: 12-02-2025

FW26CS019 Script Crewneck  
**FITTING DATE:** 12/11/25  
**MODEL/ATTENDEES:** Lombardo, Bigs, Cal, Anastasiya, Hyeyoung, Jeni, Sarah  
**STATUS:** 1st Proto Approved to PPS

Fit Comments:

1. Shoulder seam forward came in -1/4", go back to spec.

2. Neck trim height came in +3/16", go back to spec.

3. Side panel body width came in +1/4", go back to spec.

4. Bottom opening 2" above seam - updating verbiage to be say "extended". Measurement is taken extended.

5. Sleeve opening 1" above seam - updating verbiage to be "extended." Measurement is taken extended.

6. Adding sleeve cap height to spec, fty to advise for next sample.

7. Follow revised CF artwork placement of 3 1/2"

1. Chồm vai bị hụt -1/4", yêu cầu làm đúng theo bảng thông số.

2. Chiều cao bo cổ bị dư +3/16", yêu cầu làm đúng theo bảng thông số.

3. Rộng mảnh phổi sườn bị dư +1/4", yêu cầu làm đúng theo bảng thông số.

4. Thông số lai áo (đo trên đường may 2"): Đổi thuật ngữ thành "kéo căng" . Đo khi kéo căng.

5. Thông số cửa tay (đo trên đường may 1"): Đổi thuật ngữ thành "kéo căng". Đo khi kéo căng.

6. Thêm thông số cao đầu tay vào bảng thông số, xưởng cần báo số liệu cho mẫu sau.

7. Làm theo vị trí hình in thân trước đã sửa là 3 1/2".



Screen Shot 2025-12-12 at 3.43.23 PM.jpg