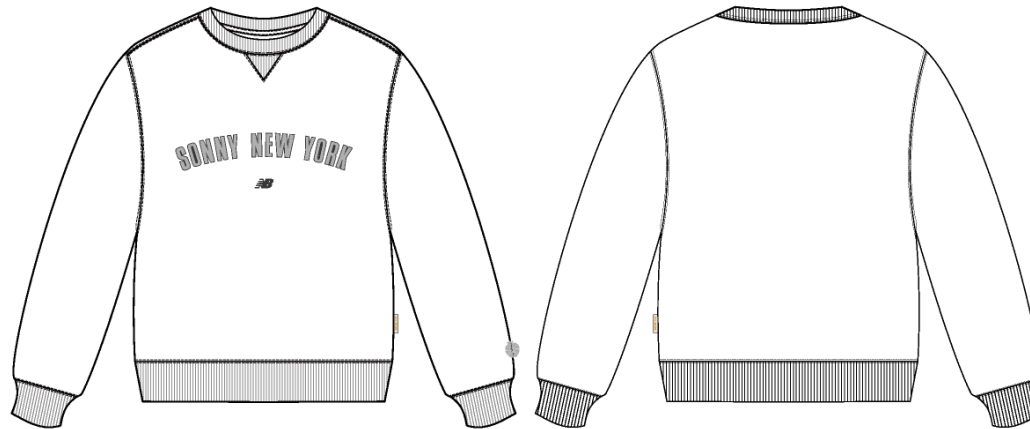


Name	Sonny NY Classic Crewneck
Style No.	FW26CS029
Division	Mens
Category	Sweatshirts
Season	Fall/Winter
Year	2026
Size Scale	<div>M</div> -Sample size
	<div>XS</div> <div>S</div> <div>M</div> <div>L</div> <div>XL</div> <div>XXL</div>
Style Status	Development
Factory	UN-AVAILABLE
Designer Name	Nils
TD Name	Anastasiya
Created by/Author	11/7/2025 Jeni Fitzgerald jeni.fitzgerald@aimeleondore.com

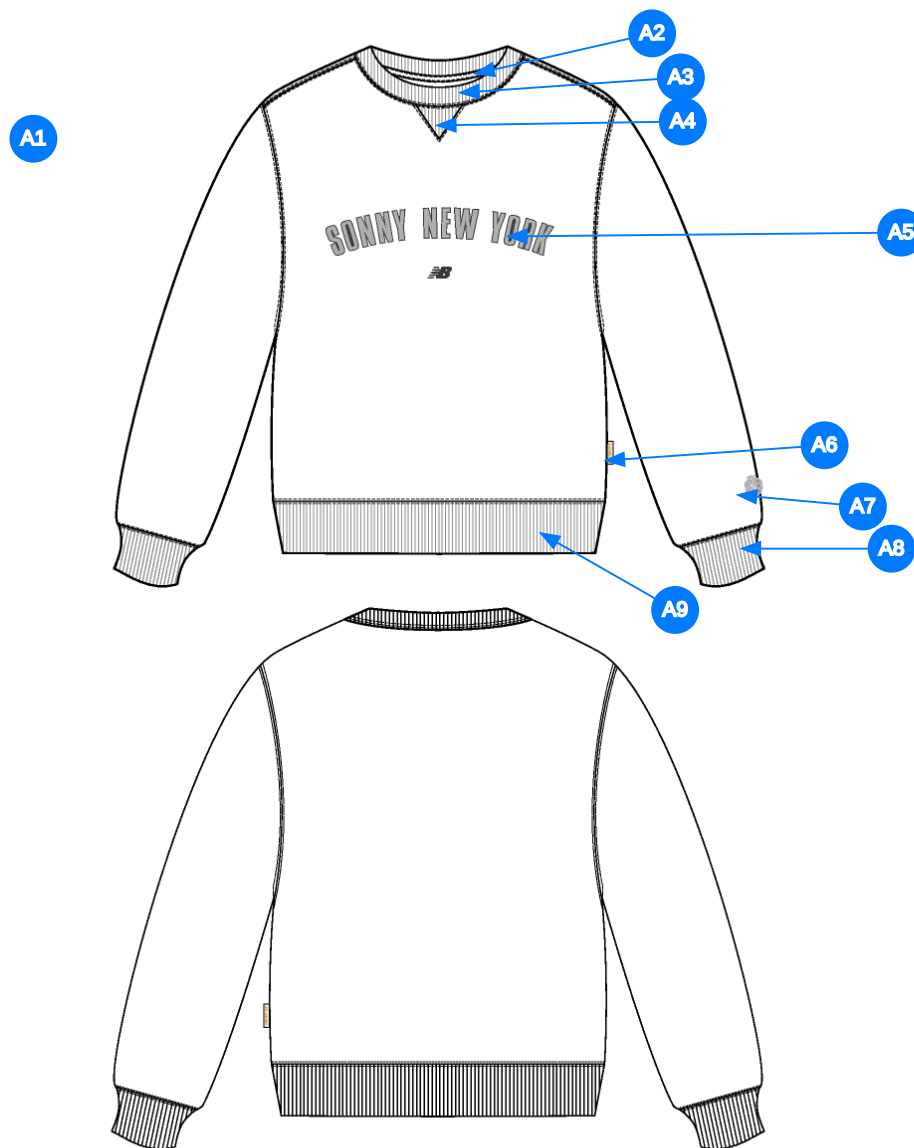
Sonny NY Classic Crewneck



1_B&W-1



2_CLR-1

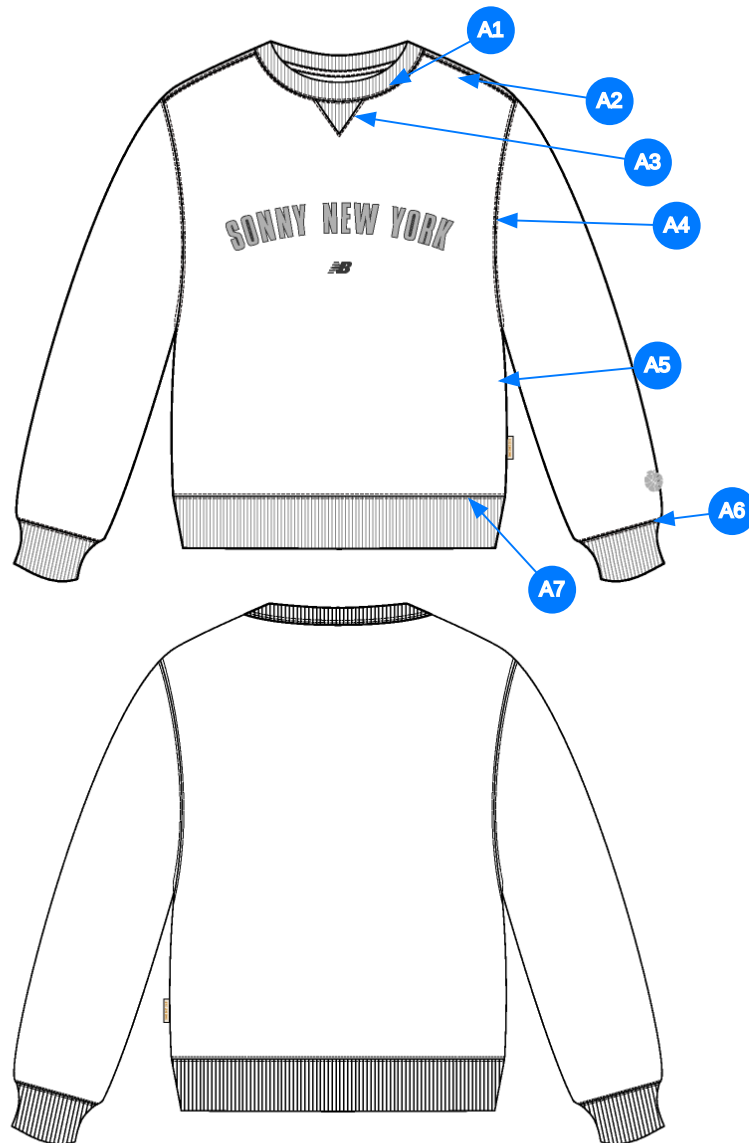


Comments (9)

- A1 FIT: NOTCH COLLAR CREWNECK (SS24CS001)
- A2 HERRINGBONE TAPE @ CB NECK
- A3 2X2 RIB DOUBLED @ NECK TRIM
- A4 SET IN RIB PANEL @ CENTER NECK
- A5 ARTWORK @ CENTER FRONT - SEE SEPARATE ARTWORK FILE FOR DETAILS
- A6 ALD WOVEN LABEL @ SIDE SEAM
- A7 EMBROIDERED ARTWORK @ LEFT SLEEVE
- A8 2X2 RIB DOUBLED @ SLEEVE CUFF
- A9 2X2 RIB DOUBLED @ BOTTOM HEM

1. fit tham khảo SS24CS001
2. dây tape viền cổ sau
3. rib 2x2 gấp đôi tại cổ
4. rib tại dorito
5. artwork tại giữa thân trước
6. nhãn cò tại sườn ngoài
7. hình thêu tại tay trái người mặc
8. rib 2x2 gấp đôi tại lai tay
9. rib 2x2 gấp đôi tại lai áo

3_Construction Details-1



Comments (7)

- A1** STRADDLE STITCH @ NECK
- A2** STRADDLE STITCH @ SHOULDER
- A3** SINGLE NEEDLE EDGE STITCH @ DORITO
- A4** STRADDLE STITCH @ ARMHOLE
- A5** CLEAN SEAM FINISH @ SIDE SEAM
- A6** STRADDLE STITCH @ SLEEVE CUFF
- A7** STRADDLE STITCH @ BOTTOM HEM

1. điều rẻ tại cổ
2. điều rẻ tại vai
3. mí điều 1 kim tại dorito
4. điều rẻ tại nách
5. may sạch tại đường may sườn
6. điều rẻ tại lai tay
7. điều rẻ tại lai áo

4_Stitching Details-1

cấu trúc tham khảo dorito

DORITO CONSTRUCTION REFERENCE



8_Construction Reference-1

Sample Size: M

POINT OF MEASURE	CODE	HOW TO MEASURE	CRITICAL	TYPE	TOLERANCE	M
Front Body Length	S&K01	HPS to bottom edge	true	Full	1/2 in	26 1/2 in
Back Body Length	S&K02	CB neck seam to bottom edge	true	Full	1/2 in	25 1/4 in
Front Neck Drop	S&K04	HPS to neck seam	false	Full	1/8 in	4 in
Back Neck Drop	S&K05	HPS to neck seam	false	Full	1/8 in	1 1/4 in
Back Neck Width	S&K06	Seam to seam at back neck, at HPS point	false	Full	1/4 in	7 3/4 in
Neck Triangle Width at Seam	S&K203		false	Full	1/8 in	3 1/4 in
Neck Triangle Height	S&K204		false	Full	1/8 in	3 in
Minimum Neck Stretch	S&K199		true	Half	0 in	11 1/2 in
Shoulder Seam Forward	S&K07	HPS to seam	false	Full	1/8 in	1/2 in
Neck Trim Height	S&K020	Neck Seam to trim edge	false	Full	1/8 in	13/16 in
Shoulder Slope	S&K08	Shoulder point perpendicular to HPS	false	Full	1/4 in	1 3/4 in
Notch Height @ Neck	S&K		true	Full	0 in	1/2 in
Across Shoulder	S&K09	Seam to seam	false	Half	1/4 in	23 1/4 in
Across Front	S&K010	7" dwn from HPS, Seam to seam	false	Half	3/8 in	21 1/4 in
Across Back	S&K011	7" dwn from HPS, Seam to Seam	false	Half	3/8 in	22 1/4 in
Chest Width	S&K012	1" Below armhole- edge to edge	true	Half	1/2 in	24 in
Bottom Opening 2" Above Rib Knit Seam	S&K		true	Half	1/2 in	23 in
Bottom Opening Width- At Edge	S&K013	At bottom edge	true	Half	1/2 in	17 in
Bottom Hem Height	S&K014	Bottom edge to stitch line or trim seam	false	Full	1/8 in	2 3/4 in
Sleeve Length from CB Neck	S&K032	3-point measure from CB Neck to shoulder point to sleeve edge	true	Full	1/2 in	34 1/2 in
Armhole Drop	S&K016	Below HPS - measure perpendicular	false	Full	1/4 in	11 5/8 in
Bicep Width	S&K017	1" below armhole- edge to edge	false	Half	1/4 in	10 in
Forearm Width	S&K033	9" up from sleeve cuff edge	false	Half	1/4 in	7 1/2 in
Sleeve Opening Width 1" Above Rib Knit Seam	S&K		true	Half	1/4 in	5 1/4 in
Sleeve Opening Width- At Edge	S&K73	At edge	false	Half	1/4 in	4 in
Sleeve Cuff Height	S&K36	Cuff edge to seam	false	Full	1/8 in	2 3/4 in
CF Artwork Placement below CF Neckline	S&K112	From CF Neck Seam to Top Edge of Artwork	false	Full	1/8 in	4 in
Sleeve Artwork Placement from Cuff Seam to Bottom Edge of Artwork	S&K0404		false	Full	1/8 in	2 in
Sleeve Artwork Centered on Sleeve Fold	S&K260		true	Full	1/8 in	0 in
Loop Label Placement at Sideseam	S&K023	Bottom edge to bottom of loop label, at the WL side seam	false	Full	1/8 in	7 in

Development Notes - Sarah Tota

CREATED ON OCT 31, 2025 5:59 PM

FW26CS029 Sonny NY Classic Crewneck






Date: 10/31/24

Status: Requesting 1st proto

TD: Sarah

Fit: Internal Note (Following body fit of SS24CS001 Notch Collar CN)

fit: tham khảo SS24CS001

COMPONENT		QTY	1.  PROTO
FABRIC			
1	UA Loop Back Heavy Fleece CODE: C2300234 French Terry Placement: BODY, SLEEVES Supplier: UNAVAILABLE Weight: 530gsm		-  Silver Mix Custom Code: Bros BC02 Price: 0.00
2	UA 2x2 Terry Rib CODE: C2300246 Placement: NECK TRIM, DORITO, SLEEVE CUFFS, BOTTOM HEM Notes: 2X2 RIB, DOUBELD Supplier: UNAVAILABLE		-  Silver Mix Custom Code: Bros BC02 Price: 0.00
3	UA Herringbone Tape CODE: ALTAPE1 Placement: STRADDLED OVER BACK NECK SEAM F/ SH TO SH Supplier: UNAVAILABLE		-  Silver Mix Custom Code: Bros BC02 Width: 3/8" Price: 0.00
4	ARTWORK CODE: AS CORRESPONDING FILE Placement: CF CHEST Notes: FOLLOW ARTWORK FILE AND POM Supplier: Factory Sourced		- ARTWORK Price: 0.00
5	ARTWORK CODE: AS CORRESPONDING FILE Placement: WL SLEEVE Notes: FOLLOW ARTWORK FILE AND POM Supplier: Factory Sourced		- ARTWORK Price: 0.00
LABEL AND TRIM PACKAGE			
6	ALD Woven Loop Label CODE: ALD-ML02 Placement: WEARER'S LEFT SIDE SEAM Notes: FOLLOW POM Supplier: Colonial	1	-  Parmesan Base / Gold Text Price: 0.00
7	ALD X NB Masaryk Printed Label (Tees & Sweatshirts) CODE: ALD-PL002-REV Placement: INTERIOR CENTER BACK NECK Supplier: Colonial	1	- ALD X NB Masaryk Printed Label (Tees & Sweatshirts) Price: 0.00
Components 7			Total 0.00