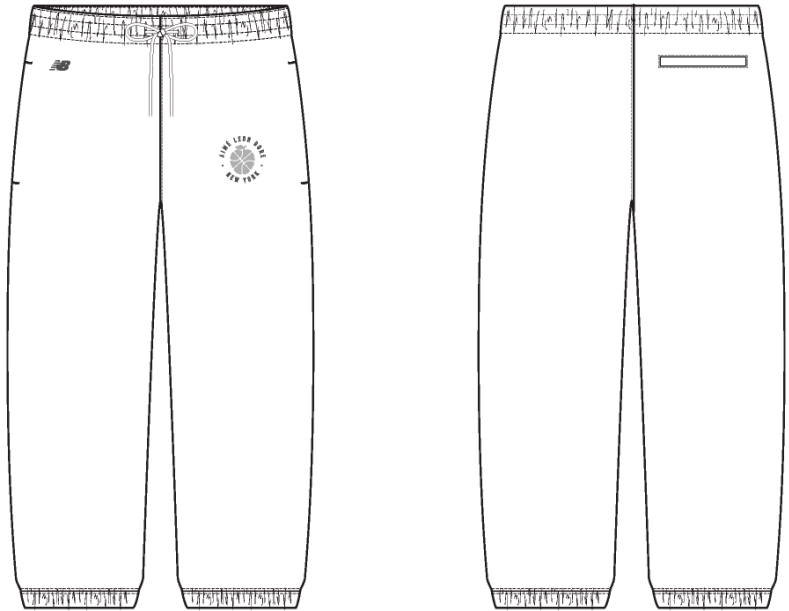
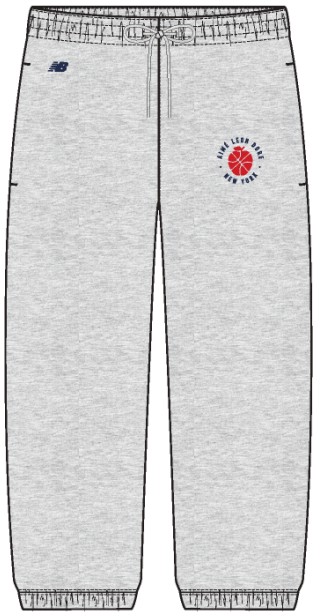


Sonny NY Team Sweatpants

Name	Sonny NY Team Sweatpants
Style No.	FW26CP011
Division	Mens
Category	Sweatpants
Season	Fall/Winter
Year	2026
Size Scale	M -Sample size
	<div>XS S M L XL XXL</div>
Style Status	Development
Factory	UN-AVAILABLE
Designer Name	Nils
TD Name	Anastasiya
Created by/Author	11/7/2025 Jeni Fitzgerald jeni.fitzgerald@aimeleondore.com



1_B&W-1

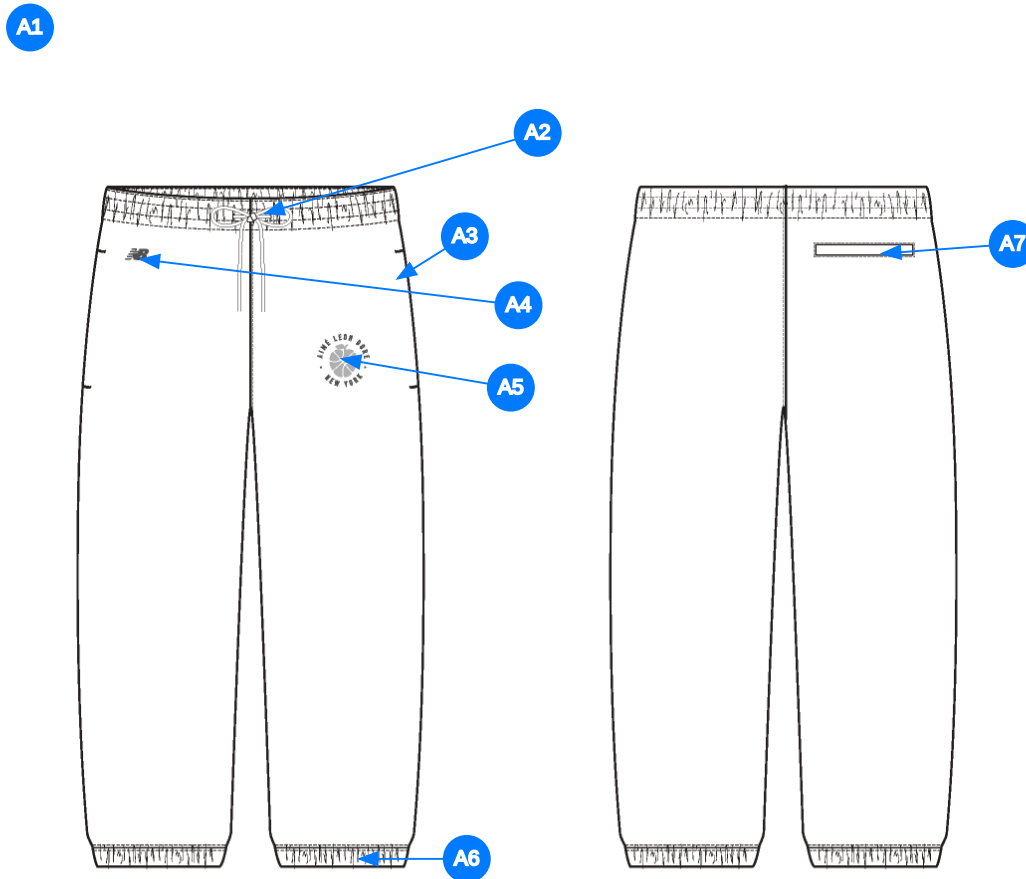


SILVER MIX



JET BLACK

2_CLR-1



Comments (7)

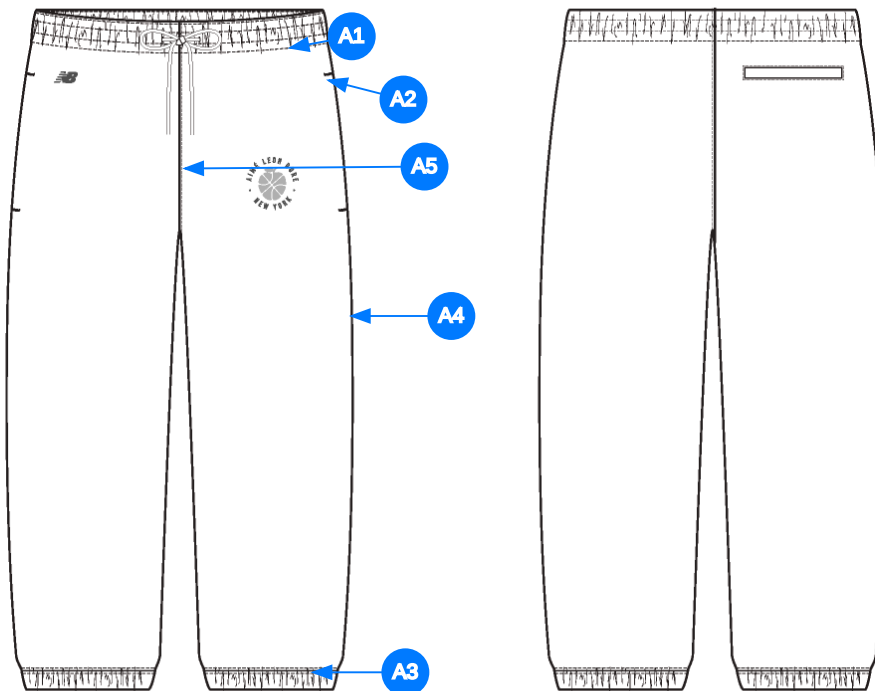
- A1** FIT: SWEATPANT FITBLOCK
- A2** GROWN ON ELASTICATED WAISTBAND W/ EXTERIOR DRAWCORDS - COTTON ROUND BRAIDED DRAWCORD - KNOTTED ENDS - BUTTONHOLE EYELETS
- A3** ON SEAM POCKETS @ SIDE SEAM - KNUCKLE SIDE COTTON JERSEY - PALM SIDE SELF FABRIC
- A4** ARTWORK @ RIGHT HIP - SEE ATTACHED FILES FOR ARTWORK
- A5** ARTWORK AT LEFT THIGH - SEE ATTACHED FILES FOR ARTWORK
- A6** GROWN ON ELASTICATED LEG OPENING - FLAT ELASTIC INSERT
- A7** BACK WELT POCKET - COTTON JERSEY POCKET BAG

1. fit: tham khảo sweatpant fit block
2. lưng thun liền với dây luồn tròn gút đầu - thùy khuy để luồn dây
3. dùng vải single làm lót túi mặt mu bàn tay, vải chính mặt lòng bàn tay
4. artwork tại quần phải
5. artwork tại quần trái
6. lai quần thun liền
7. coi túi túi - lót túi bằng vải single

Comments (5)

- A1** 1/8" SN TS @ WAIST
- A2** BAR TACKS @ SIDE SEAM POCKETS - TOP & BOTTOM EDGES
- A3** STRADDLE STITCH @ BOTTOM HEM
- A4** CLEAN SEAM @ SIDE SEAM
- A5** 1/8 SN TS @ FRONT RISE

1. điều 1 kim 1/8" tại lưng quần
2. đóng bộ tại mép trên và mép dưới túi sườn
3. điều rẻ tại lai quần
4. may sạch tại đường may sườn
5. điều 1 kim 1/8" tại đáy trước



4_Stitching Details-1

Sample Size: M

POINT OF MEASURE	CODE	HOW TO MEASURE	CRITICAL	TYPE	TOLERANCE	M
Waistband Height	S&K49	Waist seam to top edge	false	Full	1/8 in	2 in
Waist Width Relaxed	S&K50	Straight at top edge- garment relaxed	true	Half	1/4 in	15 3/8 in
Waist Width Extended	S&K51	Straight, with waist or elastic stretched	true	Half	1/4 in	21 in
Distance Between Drawcord Exit	S&K294		false	Full	1/8 in	1 1/2 in
Exposed Drawcord Length	JHqvA4		false	Full	1/2 in	10 in
Front Rise	S&K53	Crotch seam to waistband top edge	true	Half	1/4 in	13 1/4 in
Back Rise	S&K54	Crotch seam to waistband top edge	true	Half	1/4 in	16 1/2 in
Low Hip Position Below Waistband Top Edge	S&K55		true	Full	0 in	8 in
Low Hip Width	S&K56	3-pt measurement taken 8" down from waistband top edge	true	Half	1/4 in	22 in
Thigh Width	S&K57	1" below crotch point	false	Half	1/4 in	13 1/4 in
Knee Width	S&K58	12" down from the crotch point	false	Half	1/4 in	11 1/2 in
Calf Width	S&K318	Measured 18" down from Crotch point	false	Half	1/4 in	10 1/4 in
Leg Opening Width Relaxed	S&K059	Straight at edge	false	Half	1/4 in	6 1/2 in
Leg Opening Width Extended	S&K100	Extended/Pattern meas. before elastic is inserted	false	Half	1/8 in	9 1/2 in
Bottom Hem Height	S&K014	Bottom edge to stitch line or trim seam	false	Full	1/8 in	1 in
Inseam Length	S&K60	Crotch point to leg opening, along seam	true	Full	3/8 in	29 in
Front Pocket Placement Below Waistband	S&K062	Waistband seam to top of pocket	false	Full	1/4 in	3/4 in
Front Pocket Opening Length	nZGLhW		true	Full	1/4 in	6 1/4 in
Pocket Bag Height	S&K030	Top edge to bottom edge of pocket bag inside	false	Full	1/8 in	11 1/2 in
Pocket Bag Width	S&K199		false	Full	1/8 in	7 in
WR Back Pocket Placement Below Waistband Seam Outer Corner	S&K64	Waistband seam to top of pocket	false	Full	1/4 in	2 1/4 in
WR Back Pocket Placement Below Waistband Seam Inner Corner	S&K245		false	Full	1/8 in	2 3/8 in
back pocket placement from CB	qKK0r0		false	Full	1/8 in	2 1/4 in
Back pocket welt height	sq6GXE		false	Full	1/8 in	1/2 in
Back welt pocket opening length	XsJLW4		false	Full	1/8 in	5 1/2 in
back pocket bag length	INdzW3		false	Full	1/8 in	9 1/2 in
WR Artwork Placement Below Waistband	u7Spnp		false	Full	1/8 in	1 1/8 in
WR Artwork Placement in from WR side Pocket edge	S&K117	WL edge of pocket to embroidery	false	Full	1/8 in	2 1/8 in
WL Front Artwork Placement Below Pocket Edge	U4foLw		false	Full	1/8 in	1 3/8 in
WL Front Artwork Forward From Outseam	S&K246		false	Full	1/8 in	2 3/4 in

Development Notes - Sarah Tota

CREATED ON OCT 31, 2025 6:02 PM

FW26CP011 Sonny NY Team Sweatpants

Date: 10/31/24

Status: Requesting 1st proto

TD: Sarah

Fit: FB22 Sweatpant (Elasticated Bottom) with the following changes

- Removing WR top applied pocket
- Adding WR back welt pocket

fit: tham khảo FB22 với thay đổi bên dưới:
- bỏ túi đắp sau phải
- thêm cơi túi sau phải

COMPONENT		QTY	1.  PROTO
FABRIC			
1	UA Loop Back Heavy Fleece CODE: C2300234 French Terry Placement: BODY, PALM SIDE POCKET BAGS Supplier: UNAVAILABLE Weight: 530gsm		-  Silver Mix Custom Code: Bros BC02 Price: 0.00
2	C2202550 SINGLE JERSEY CODE: xSmJM Placement: KNUCKLE SIDE FRONT POCKET BAGS, WR BACK POCKET BAG Supplier: UNAVAILABLE		-  Silver Mix Custom Code: Bros BC02 Price: 0.00
3	UA ELASTIC CODE: S24-ELASTIC Placement: WAISTBAND, BOTTOM LEG OPENINGS Supplier: UNAVAILABLE		-  WHITE Price: 0.00
4	SS24-CRDW CODE: UA Cotton Round Drawcord Placement: WB TUNNEL Notes: KNOTTED W/ FRAYED ENDS Supplier: UNAVAILABLE		-  Silver Mix Custom Code: Bros BC02 Price: 0.00
5	THREAD EYELET CODE: THREAD EYELET Placement: DRAWCORD EXIT Notes: VERTICAL BUTTON HOLE EYELET Supplier: Factory Sourced		-  Silver Mix Custom Code: Bros BC02 Price: 0.00
6	ARTWORK CODE: AS CORRESPONDING FILE Placement: WR HIP Notes: FOLLOW ARTWORK FILE AND POM Supplier: Factory Sourced		- ARTWORK Price: 0.00
7	ARTWORK CODE: AS CORRESPONDING FILE Placement: WL THIGH Notes: FOLLOW ARTWORK FILE AND POM Supplier: Factory Sourced		- ARTWORK Price: 0.00
LABEL AND TRIM PACKAGE			
8	ALD X NB Masaryk Printed Label (Tees & Sweatshirts) CODE: ALD-PL002-REV Placement: INTERIOR WAISTBAND AT CENTER BACK Supplier: Colonial	1	- ALD X NB Masaryk Printed Label (Tees & Sweatshirts) Price: 0.00
Components 8			Total 0.00