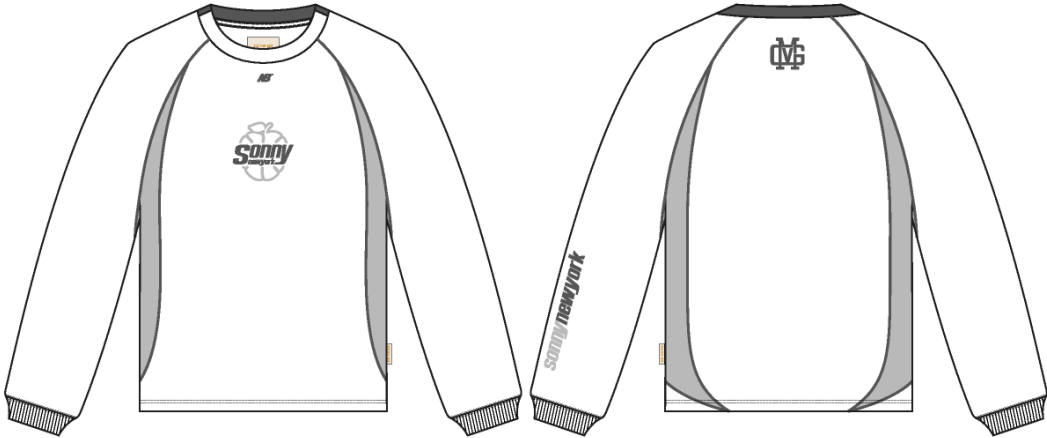


LS Sonny Performance Warm Up

Name	LS Sonny Performance Warm Up
Style No.	FW26CT091
Division	Mens
Category	Tees
Season	Fall/Winter
Year	2026
Size Scale	<div>M</div> -Sample size <div><div>XS</div><div>S</div><div>M</div><div>L</div><div>XL</div><div>XXL</div></div>
Style Status	Development
Factory	UN-AVAILABLE
Designer Name	Nils
TD Name	Anastasiya
Created by/Author	11/10/2025 Jeni Fitzgerald jeni.fitzgerald@aimeleondore.com



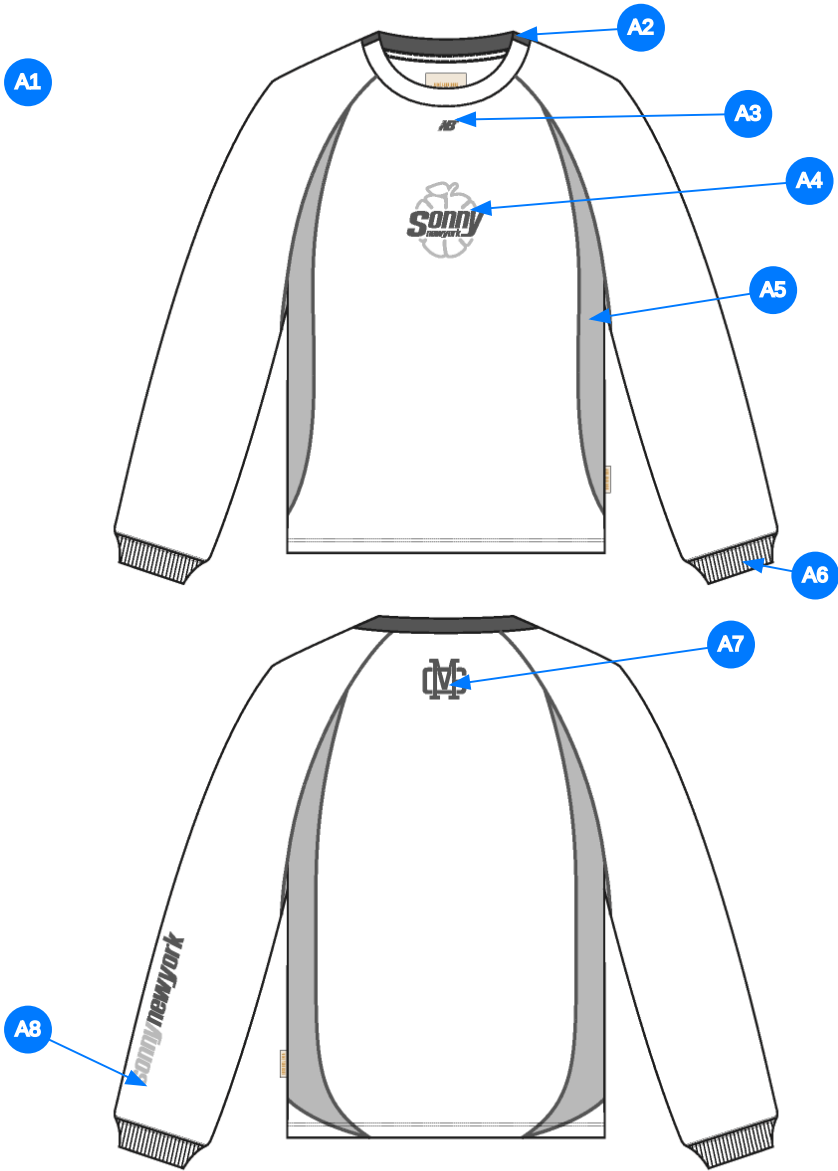
1_B&W-1



BRIGHT WHITE

JET BLACK

2_CLR-1

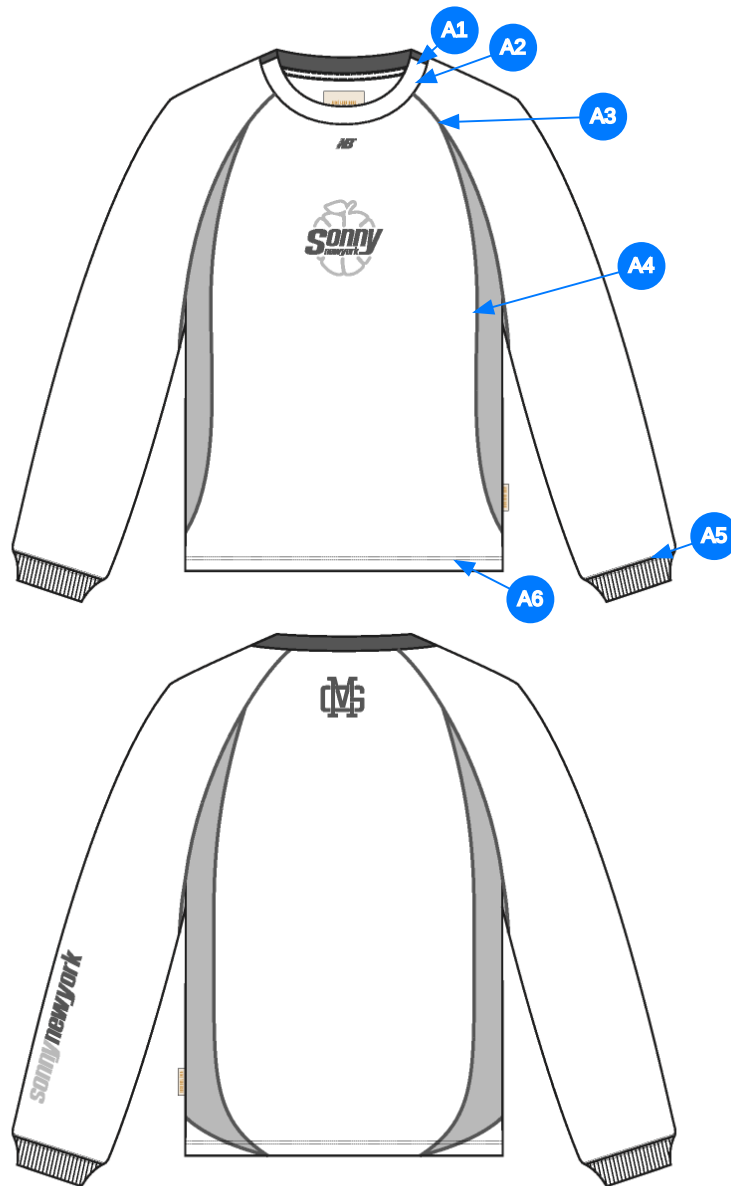


Comments (8)

- A1 FIT: SS24CT010
- A2 SET IN SELF PANEL @ COLLAR - CONTRAST COLOR @ BACK - POLY TAPE ALONG NECK
- A3 ARTWORK @ CENTER NECK - SEE ATTACHMENT FOR ARTWORK FILE
- A4 ARTWORK @ CF - SEE ATTACHMENT FOR ARTWORK FILE
- A5 SET IN SELF PANEL @ BODY - CONTRAST COLOR
- A6 1x1 POLY RIBBED CUFF @ SLEEVE
- A7 ARTWORK @ CB NECK - SEE ATTACHMENT FOR ARTWORK FILE
- A8 ARTWORK @ BACK OF SLEEVE - SEE ATTACHMENT FOR ARTWORK FILE

- 1. fit tham khảo: SS26CT010
- 2. phối cổ sau bằng vải chính khác màu - dây tape viền cổ sau
- 3. hình in tại giữa cổ trước
- 4. hình in giữa thân trước
- 5. phối tại sườn
- 6. bo cái 1x1 poly tại lai tay
- 7. hình in tại thân sau
- 8. hình in tại tay trái sau

3_Construction Details-1



Comments (6)

- A1** CLEAN SEAM @ SET IN CONTRAST COLLAR PANEL
- A2** CLEAN SEAM @ COLLAR
- A3** FLAT LOCK STITCH @ RAGLAN SEAM
- A4** FLATLOCK STITCH @ SET IN SIDE PANEL
- A5** STRADDLE STITCH @ SLEEVE CUFF
- A6** 1/4" DN TS @ BOTTOM HEM - TURN BACK WITH COVERLOCK STITCH

1. may sạch tại phối cổ
2. may sạch tại cổ
3. đánh bông tại raglan
4. đánh bông tại phối sườn
5. điều rê tại lai tay
6. điều 2 kim 1/4" tại lai áo

4_Stitching Details-1

cấu trúc cổ tham khảo
COLLAR CONSTRUCTION REFERENCE



5_Collar Reference-1

Sample Size: M

POINT OF MEASURE	CODE	HOW TO MEASURE	CRITICAL	TYPE	TOLERANCE	M
Front Body Length	S&K01	HPS to bottom edge	true	Full	1/2 in	27 1/2 in
Back Body Length	S&K02	CB neck seam to bottom edge	true	Full	1/2 in	16 1/2 in
Front Neck Drop	S&K04	HPS to neck seam	false	Full	1/8 in	4 1/4 in
Back Neck Drop	S&K05	HPS to neck seam	false	Full	1/8 in	1 in
Back Neck Width	S&K06	Seam to seam at back neck, at HPS point	false	Full	1/4 in	7 1/2 in
Minimum Neck Stretch	S&K199		true	Half	0 in	11 1/2 in
Neck Trim Height	S&K020	Neck Seam to trim edge	false	Full	1/8 in	3/4 in
Raglan Shoulder Slope	S&K037	9 1/2" out from CB, at HPS line	false	Full	1/8 in	1 3/4 in
Front Raglan Seam Placement at Neck	S&K038	HPS to raglan seam straight down	false	Full	1/8 in	2 1/4 in
Back Raglan Seam Placement at Neck	S&K039	HPS to raglan seam straight down	false	Full	1/8 in	1 1/4 in
Across Front/Across Back Position from HPS	eos7YR		true	Full	0 in	7 in
Across Front	S&K010	Down from HPS, Seam to seam	false	Half	3/8 in	13 3/4 in
Across Back	S&K011	Down from HPS, Seam to Seam	false	Half	3/8 in	15 in
Chest Width	S&K012	1" Below armhole- edge to edge	true	Half	1/2 in	22 1/4 in
Bottom Opening Width- At Edge	S&K013	At bottom edge	true	Half	1/2 in	22 1/4 in
Bottom Hem Height	S&K014	Bottom edge to stitch line or trim seam	false	Full	1/8 in	3/4 in
Sleeve Length from CB Neck	S&K032	3-point measure from CB Neck to shoulder point to sleeve edge	true	Full	1/2 in	34 in
Armhole Drop	S&K016	Below HPS - measure perpendicular	false	Full	1/4 in	11 3/4 in
Bicep Width	S&K017	1" below armhole- edge to edge	false	Half	1/4 in	8 1/2 in
Forearm Width	S&K033	9" up from sleeve cuff edge	false	Half	1/4 in	6 1/2 in
Sleeve Opening Width- At Seam	S&K034	Width at Seam	false	Half	1/4 in	4 1/4 in
Sleeve Opening Width- At Edge	S&K73	At edge	false	Half	1/4 in	3 3/4 in
Cuff Height	S&K036	Cuff edge to seam	false	Full	1/8 in	1 1/4 in
Top CF Artwork Placement below CF Neckline	S&K112	Neck Seam to Top Edge	false	Full	1/8 in	1 1/8 in
Bottom CF Artwork Placement below CF Neckline	S&K112	From CF Neck Seam to Top Edge of Artwork	false	Full	1/8 in	3 1/4 in
CB Artwork Placement below Yoke Seam	S&K109	From CB neck seam to top Artwork	false	Full	1/8 in	1 1/2 in
Sleeve Artwork Placement from Cuff Seam	S&K325		false	Full	1/8 in	2 in
Sleeve Artwork Centered on Sleeve Fold	S&K325		false	Full	1/8 in	0 in
Loop Label Placement at Sideseam	S&K023	Bottom edge to bottom of loop label, at the WL side seam	false	Full	1/8 in	7 in

Development Notes - Anastasiya Zolotova

CREATED ON NOV 7, 2025 4:25 PM

FW26CT092 Sonny Performance Reversible Jersey

Date: 11/7/25

TD: Anastasiya

Sample Request: Requesting 1st Proto

Fit: Please start with pattern of SS24CT010 LS Sport Tee w/below updates

-Sending reference sample follow for taped seams

-Adjust front and back paneling as sketch

-Add cuff

fit: tham khảo rập SS24CT010, với update bên dưới:

- tham khảo dây tape đường may trên áo mẫu khách gửi

- điều chỉnh thân trước và thân sau như sketch






- thêm lai tay



Back.jpg



Front.jpg

COMPONENT		QTY	1.  PROTO
FABRIC			
1	HMSY2906 INTERLOCK CODE: HMSY2906 Placement: BODY, FRONT NECK TRIM Supplier: UNAVAILABLE Weight: 200 GSM Country of Origin: VIETNAM		-  Bright White Custom Code: 11-0601 TCX Price: 3.67
2	HMSY2906 INTERLOCK CODE: HMSY2906 Placement: SET IN PANELS AT SIDE BODY Supplier: UNAVAILABLE Weight: 200 GSM Country of Origin: VIETNAM		-  True Red Custom Code: 19-1664 TCX Price: 0.00
3	HMSY2906 INTERLOCK CODE: HMSY2906 Placement: BACK NECK TRIM Supplier: UNAVAILABLE Weight: 200 GSM Country of Origin: VIETNAM		-  Evening Blue Custom Code: 19-3815 TCX Price: 0.00
4	IN DEV CODE: TBD Placement: SLEEVE CUFF TRIM Notes: 1X1 POLY RIB, COLOR = BRIGHT WHITE		- IN DEV Price: 0.00
5	2-24162A001-S0016 CODE: UA Poly Neck Tape Placement: @ BACK NECK Supplier: UNAVAILABLE		-  Bright White Custom Code: 11-0601 TCX Price: 0.00
6	ARTWORK CODE: AS CORRESPONDING FILE Placement: CF NECK Notes: FOLLOW ARTWORK FILE AND POM Supplier: Factory Sourced		- ARTWORK Price: 0.00
7	ARTWORK CODE: AS CORRESPONDING FILE Placement: CF CHEST Notes: FOLLOW ARTWORK FILE AND POM Supplier: Factory Sourced		- ARTWORK Price: 0.00
8	ARTWORK CODE: AS CORRESPONDING FILE Placement: CB NECK Notes: FOLLOW ARTWORK FILE AND POM Supplier: Factory Sourced		- ARTWORK Price: 0.00
9	ARTWORK CODE: AS CORRESPONDING FILE Placement: WL SLEEVE Notes: FOLLOW ARTWORK FILE AND POM Supplier: Factory Sourced		- ARTWORK Price: 0.00
LABEL AND TRIM PACKAGE			
10	ALD X NB Masaryk Printed Label CODE: 210518 Supplier: Colonial Country of Origin: CHINA	1	- ALD X NB Masaryk Printed Label Price: 0.00
Components 10			Total 0.00