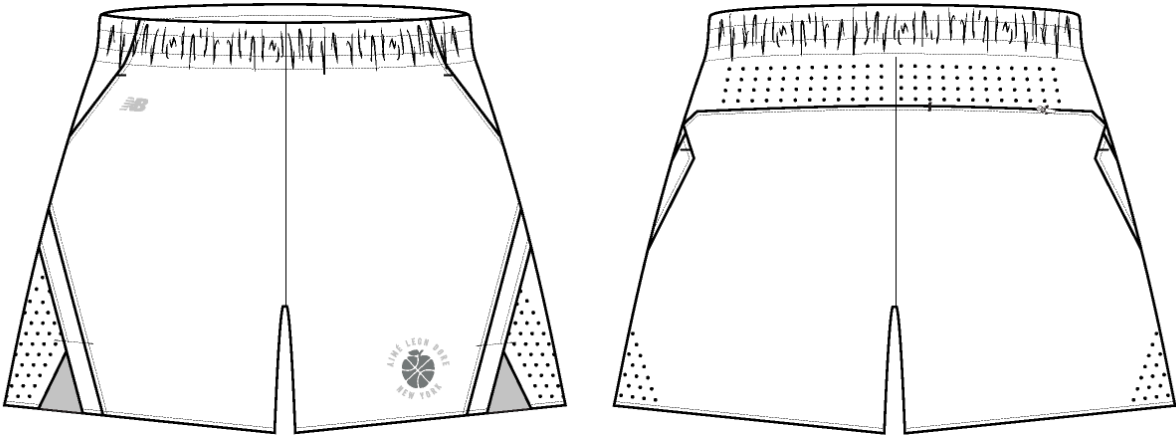
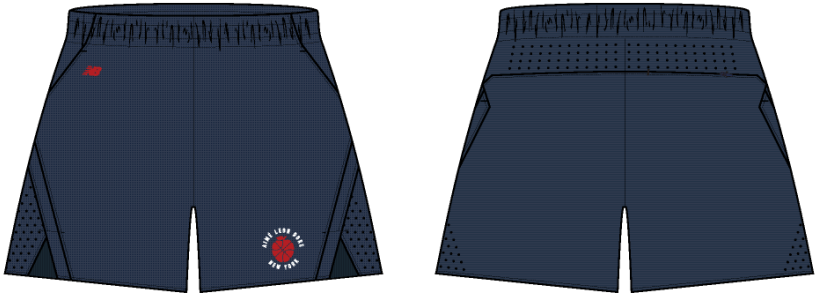


Name	Sonny Performance Pro Short
Style No.	FW26CR000
Division	Mens
Category	Shorts
Season	Fall/Winter
Year	2026
Size Scale	<b>M</b> -Sample size
	<div>XS S M L XL XXL</div>
Style Status	Development
Factory	UN-AVAILABLE
Designer Name	Nils
TD Name	Anastasiya
Created by/Author	11/7/2025 Jeni Fitzgerald jeni.fitzgerald@aimeleondore.com

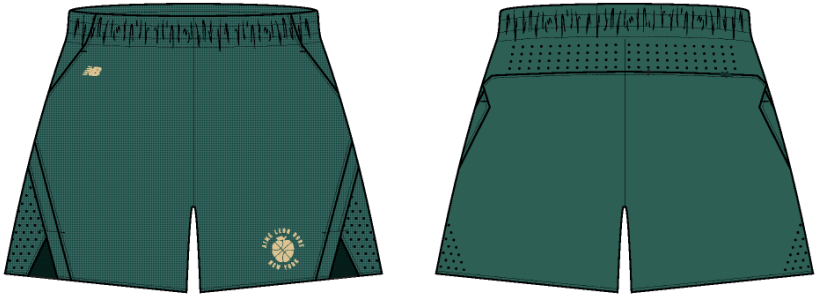
Sonny Performance Pro Short



1\_B+W-1

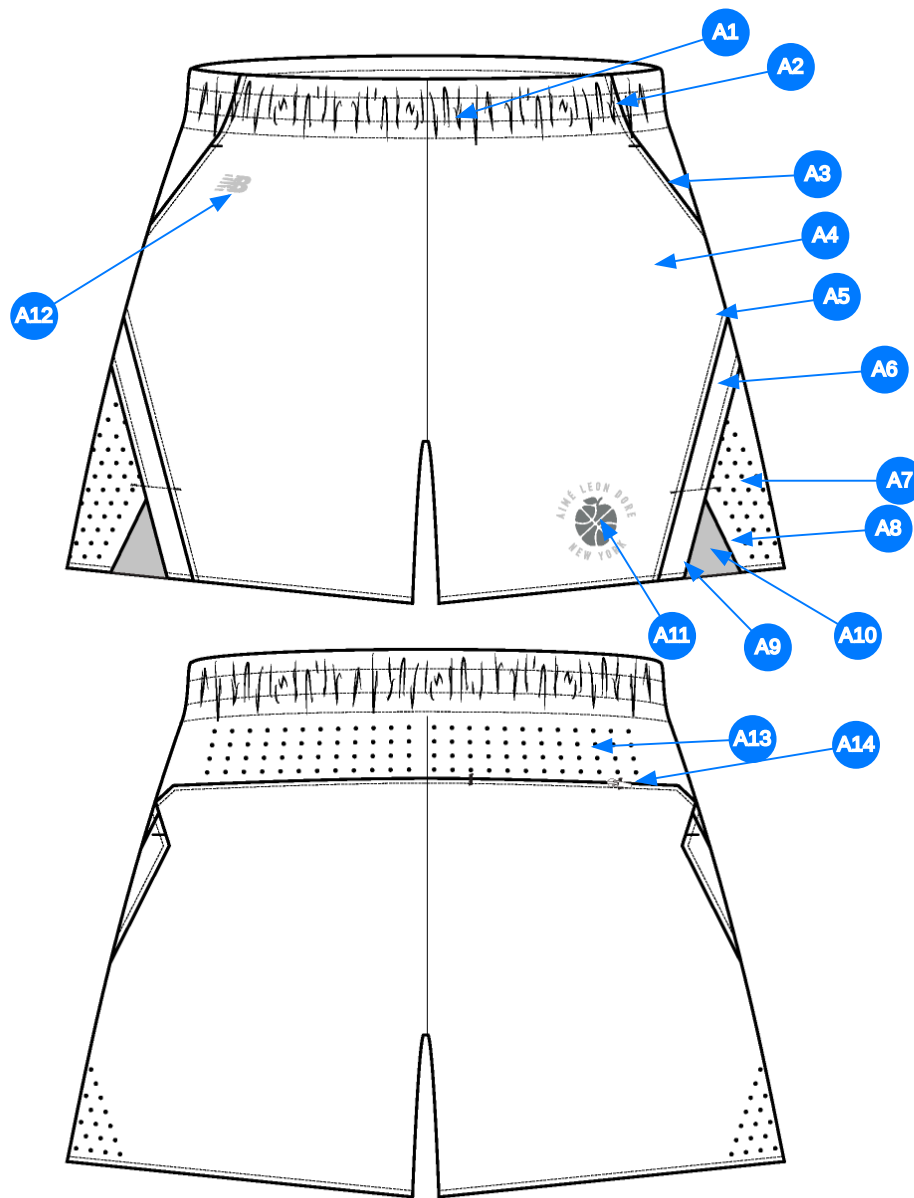


EVENING BLUE



RAIN FOREST

2\_CLR-1

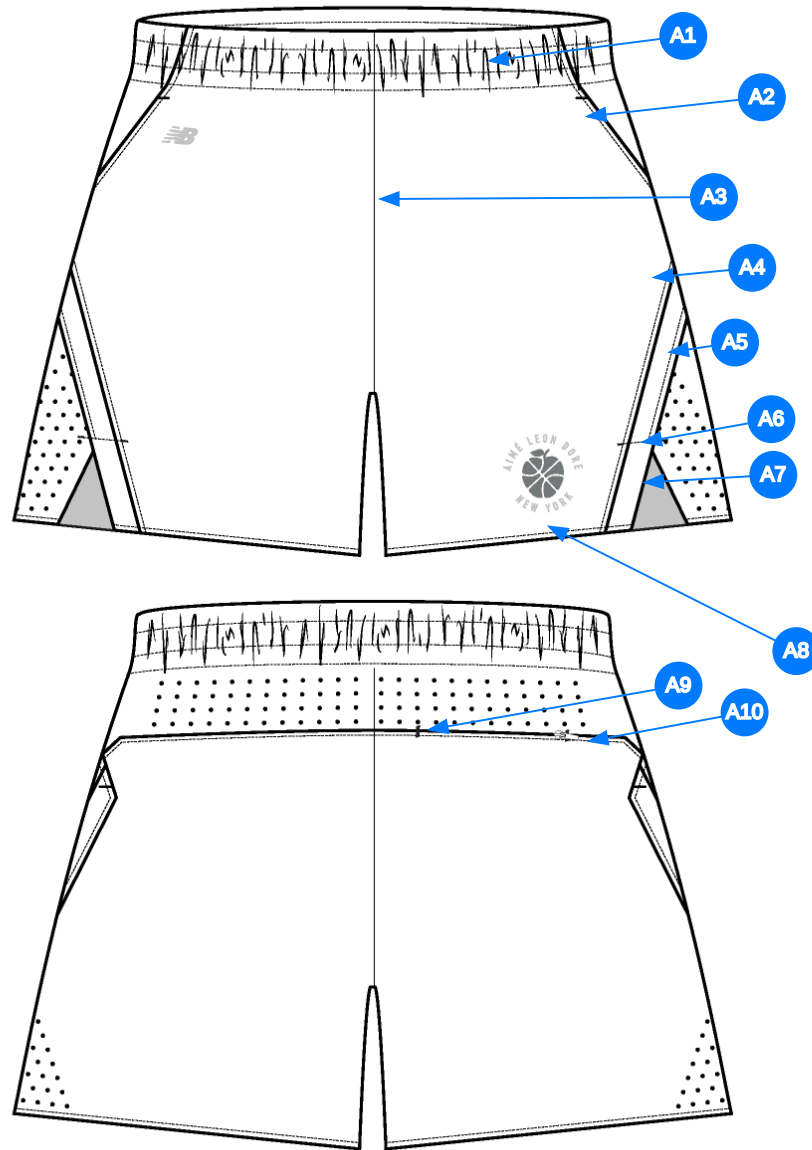


3\_CONSTRUCTION DETAILS-1

Comments (14)

- A1 GROWN ON ELASTICATED WAISTBAND w/ INTERIOR DRAWCORD - 1/4" FLAT BRAIDED DRAWCORDS TURNBACK FINISH - THREAD EYELETS
- A2 SIDE PANEL WAISTBAND CONSTRUCTION
- A3 ON SEAM POCKETS @ ANGLED SIDE SEAM CONSTRUCTION - POCKET BAG SELF
- A4 SINGLE LAYER FABRIC - UNLINED
- A5 ANGLED SIDE SEAM CONSTRUCTION
- A6 SET IN SELF FABRIC SIDE PANEL
- A7 LASER CUT PERFORATION @ LOWER BACK LEGS
- A8 LASER CUT EDGE - BONDED SELF STRIP @ INSIDE - SEE ATTACHMENT FOR CONSTRUCTION REFERENCE
- A9 LASER CUT EDGE - BONDED SELF STRIP @ INSIDE - SEE ATTACHMENT FOR CONSTRUCTION REFERENCE
- A10 EXAGGERATED VENT
- A11 ARTWORK @ LEFT LEG -SEE ATTACHED FILES FOR ARTWORK
- A12 ARTWORK @ RIGHT HIP - SEE ATTACHED FILES FOR ARTWORK
- A13 BACK YOKE CONSTRUCTION w/ PERFORATION
- A14 ON SEAM ZIPPER POCKET @ BACK YOKE

1. lưng thun liền với dây luồn đẹp 1/4" gấp đầu-thùy khuy
2. cấu trúc lưng quần phối
3. túi nằm trên đường may sườn chéo - lót túi bằng vải chính
4. quần 1 lớp - không có lớp lót
5. cấu trúc sườn chéo
6. vải chính tại phối sườn
7. laser cut tại sườn lai
8. laser cut tại mép - bonded seam tại xẻ lai-xem cấu trúc tham khảo bên dưới
9. laser cut tại mép - bonded seam tại xẻ lai-xem cấu trúc tham khảo bên dưới
10. xẻ lai
11. artwork tại quần trái
12. artwork tại quần phải
13. laser cut đồ sau
14. dây kéo túi sau quần phải tại đồ sau



4\_STITCHING DETAILS-1

Comments (10)

- A1** SINGLE NEEDLE TOPSTITCH @ WAISTBAND
- A2** EDGE STITCH @ ANGLED SIDE PANEL - BAR TACKS @ TOP AND BOTTOM OF SIDE SEAM POCKETS
- A3** CLEAN SEAM @ RISE
- A4** EDGE STITCH @ ANGLED SIDE SEAM
- A5** EDGE STITCH @ SET IN SELF SIDE PANEL
- A6** SINGLE NEEDLE TOP STITCH @ VENT OPENING - BAR TACKS ON EACH SIDE OF TOP STITCH
- A7** LASER CUT EDGED
- A8** 1/4" SN TS BONDED TURNBACK FINISH @ HEM
- A9** - BAR TACKS ON EACH SIDE OF ZIPPER OPENING
- A10** EDGE STITCH @ BACK YOKE

1. điều tại lưng quần
2. mí điều tại túi sườn chéo - bộ cạnh trên và cạnh dưới túi
3. may sạch tại đáy
4. mí điều tại phối lại
5. mí điều tại phối lại
6. điều tại xẻ lai - bộ tại mỗi mép như cấu trúc tham khảo bên dưới
7. laser cut tại mép
8. điều 1 kim 1/4" tại bonded seam lai quần
9. bộ tại mỗi cạnh của miệng dây kéo túi sau
10. mí điều tại đô sau

CONSTRUCTION REFERENCE



8\_Construction Reference-1

tham khảo laser cut và bonded seam

**LASER CUT EDGE  
- BONDED STRIP INSIDE  
REFERENCE**



Laser Cut Edge Reference-1

Sample Size: M

POINT OF MEASURE	CODE	HOW TO MEASURE	CRITICAL	TYPE	TOLERANCE	M
Waistband Height	S&K49	Waist seam to top edge	false	Full	1/8 in	1 1/2 in
Waist Width Relaxed	S&K50	Straight at top edge- garment relaxed	true	Half	1/2 in	15 3/4 in
Waist Width Extended	S&K51	Straight, with waist or elastic stretched	true	Half	1/2 in	21 1/2 in
Exposed Drawcord Length	JHqvA4		false	Full	1/2 in	11 in
Interior Drawcord Exit Spacing	WBDRAW	Center to Center Relaxed	false	Full	1/8 in	1 1/2 in
Front Rise	S&K53	Crotch seam to waistband top edge	true	Half	3/8 in	13 in
Back Rise	S&K54	Crotch seam to waistband top edge	true	Half	3/8 in	16 3/4 in
Low Hip Position Below Waistband Top Edge	S&K55		true	Full	0 in	8 in
Low Hip Width	S&K56	3-pt measurement taken 8" down from waistband top edge	true	Half	1/2 in	23 1/4 in
Thigh Width	S&K57	1" below crotch point	false	Half	3/8 in	14 1/2 in
Leg Opening Width for Shorts	S&K72	Along opening edge	false	Half	3/8 in	13 3/4 in
Leg Opening Hem Height	S&K61	Edge to stitch line	false	Full	1/8 in	1 in
Inseam Length	S&K60	Crotch point to leg opening, along seam	true	Full	1/2 in	6 1/2 in
Front Pocket Placement Below Waistband	S&K062	Waistband seam to top of pocket	false	Full	1/4 in	5/8 in
Front On-seam Pocket Opening Length	S&K063	Along opening edge	false	Full	1/4 in	6 1/2 in
Front Pocket Bag Height	S&K030	Not Including Overlock Stitching	false	Full	1/8 in	11 in
Front Pocket Bag Width	S&K199	Not Including Overlock Stitching	false	Full	1/8 in	7 1/4 in
Back Yoke Height at CB	S&K167		false	Full	1/8 in	2 3/8 in
Back Yoke Height At Outseam	1NISV2		true	Full	1/8 in	3 1/2 in
WR Back Pocket Zipper Length	WV		false	Full	1/8 in	5 3/4 in
Back Pocket Bag Height	S&K030	Not Including Overlock Stitching	false	Full	1/8 in	7 1/2 in
Back Pocket Bag Width	S&K199	Not Including Overlock Stitching	false	Full	1/8 in	7 1/4 in
WL Artwork Placement Up from Hem Edge	ZPpjin	From Hem to Artwork Bottom Edge	true	Full	1/8 in	1 5/8 in
WL Artwork Placement from Outseam	TiH06K	From Seam to Artwork Edge	true	Full	1/8 in	2 1/4 in



## Development Notes - Sarah Tota

CREATED ON OCT 31, 2025 7:28 PM

### **FW26CR000 Sonny Performance Pro Short**

**Date:** 10/31/24

**Status:** Requesting 1st proto

**TD:** Sarah

### **Fit: Please follow SS25CR001 Practice Short w/below updates**

1. Follow reference garment sent for side slit construction
2. Follow reference garment sent for side seam construction (follow what is taped)
3. Follow reference garment for back yoke
4. Follow reference sample for all bonding
5. Follow revised inseam length of 6 1/2"
6. Changing to grown on waistband

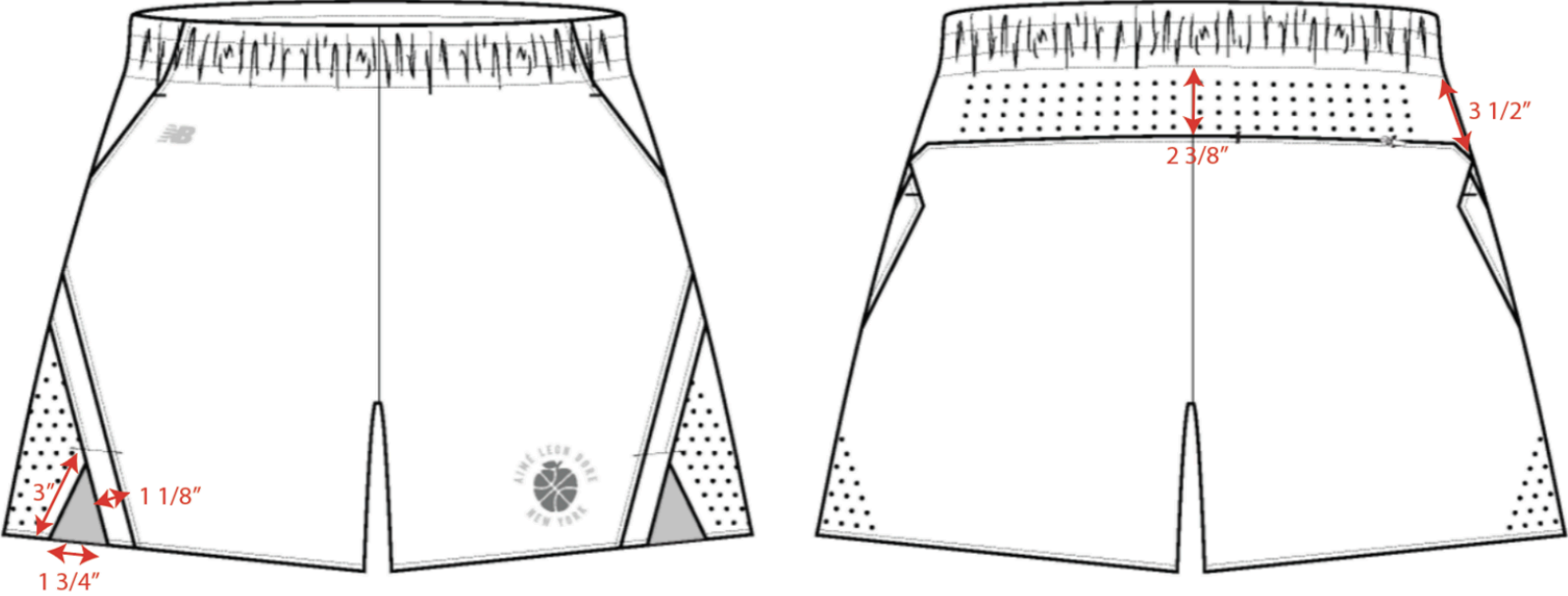
\*Sending reference sample

fit: tham khảo SS25CR001 với thay đổi bên dưới

1. tham khảo mẫu khách gửi cho cấu trúc xẻ lai
2. tham khảo mẫu khách gửi cho cấu trúc sườn
3. tham khảo mẫu khách gửi cho độ sau
4. tham khảo mẫu khách gửi cho tất cả độ sau
5. tham khảo thay đổi dài sườn trong 6 1/2"
6. thay đổi lưng quần liền.



Screenshot 2025-11-03 at 11.14.50 AM.jpg



Screenshot 2025-11-06 at 5.09.59 PM.jpg

COMPONENT		QTY	1.  PROTO
FABRIC			
1	<b>IN DEV</b> CODE: TBD Placement: BODY, BACK YOKE, POCKET BAGS, SET IN STRIPE INSERTS Notes: FOLLOW REFERENCE SAMPLE FOR FABRIC QUALITY, SEND STOCK AVAILABLE OPTIONS FOR APPROVAL		- IN DEV Price: 0.00
2	<b>ARTWORK</b> CODE: AS CORRESPONDING FILE Placement: LOWER BACK LEGS, BACK YOKE Notes: LASER CUT PERFORATION, FOLLOW ARTWORK FILE AND POM Supplier: Factory Sourced		- ARTWORK Price: 0.00
3	<b>UA ELASTIC</b> CODE: S24-ELASTIC Placement: WAISTBAND Supplier: UNAVAILABLE		-  Undefined Price: 0.00
4	<b>THREAD EYELET</b> CODE: THREAD EYELET Placement: WAISTBAND INTERIOR, DRAWCORD EXITS Notes: VERTICAL BUTTON HOLE EYELETS Supplier: Factory Sourced		-  Undefined Price: 0.00
5	<b>IN DEV</b> CODE: TBD Placement: WAISTBAND INTERIOR Notes: 1/4" FLAT BRAIDED DRAWCORDS W/ TURNBACK FINISH		- IN DEV Price: 0.00
6	<b>YKK INVISIBLE ZIPPER</b> CODE: TBD Placement: WR ON SEAM BACK POCKET Supplier: YKK		-  Undefined SIZE: Undefined Price: 0.00
7	<b>YKK Zipper Tape</b> CODE: YKK Placement: WR ON SEAM BACK POCKET		-  Undefined Price: 0.00
8	<b>ARTWORK</b> CODE: AS CORRESPONDING FILE Placement: WL LEG Notes: FOLLOW ARWORK FILE AND POM Supplier: Factory Sourced		- ARTWORK Price: 0.00
9	<b>ARTWORK</b> CODE: AS CORRESPONDING FILE Placement: WR HIP Notes: FOLLOW ARWORK FILE AND POM Supplier: Factory Sourced		- ARTWORK Price: 0.00
LABEL AND TRIM PACKAGE			
10	<b>ALD X NB Masaryk Printed Label (Tees &amp; Sweatshirts)</b> CODE: ALD-PL002-REV Placement: INTERIOR WAISTBAND AT CENTER BACK Supplier: Colonial	1	- ALD X NB Masaryk Printed Label (Tees & Sweatshirts) Price: 0.00
Components 10			Total 0.00