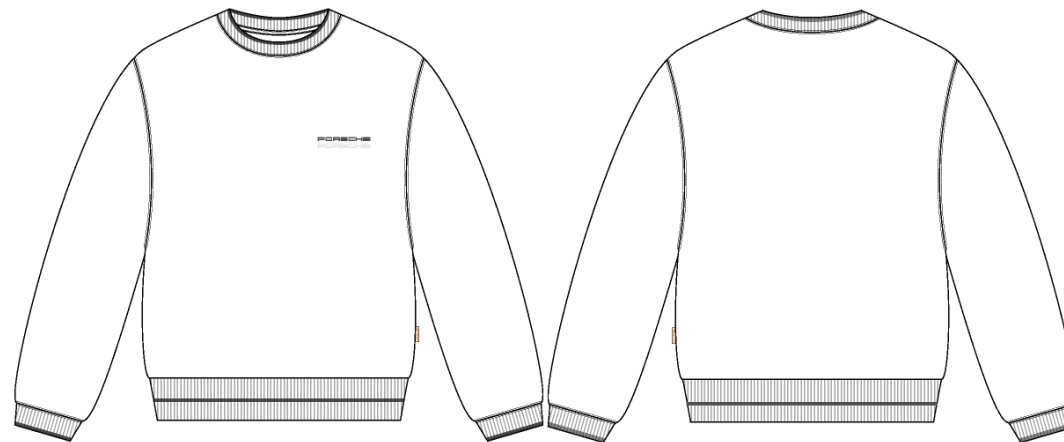
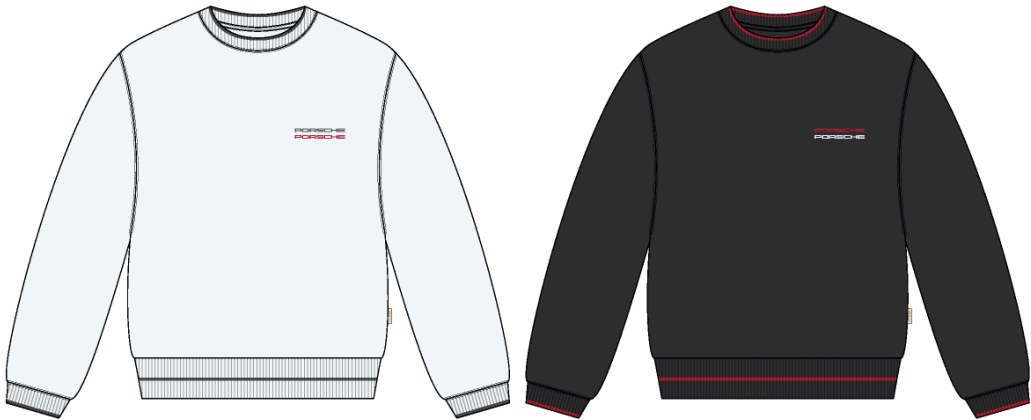


Porsche Crewneck

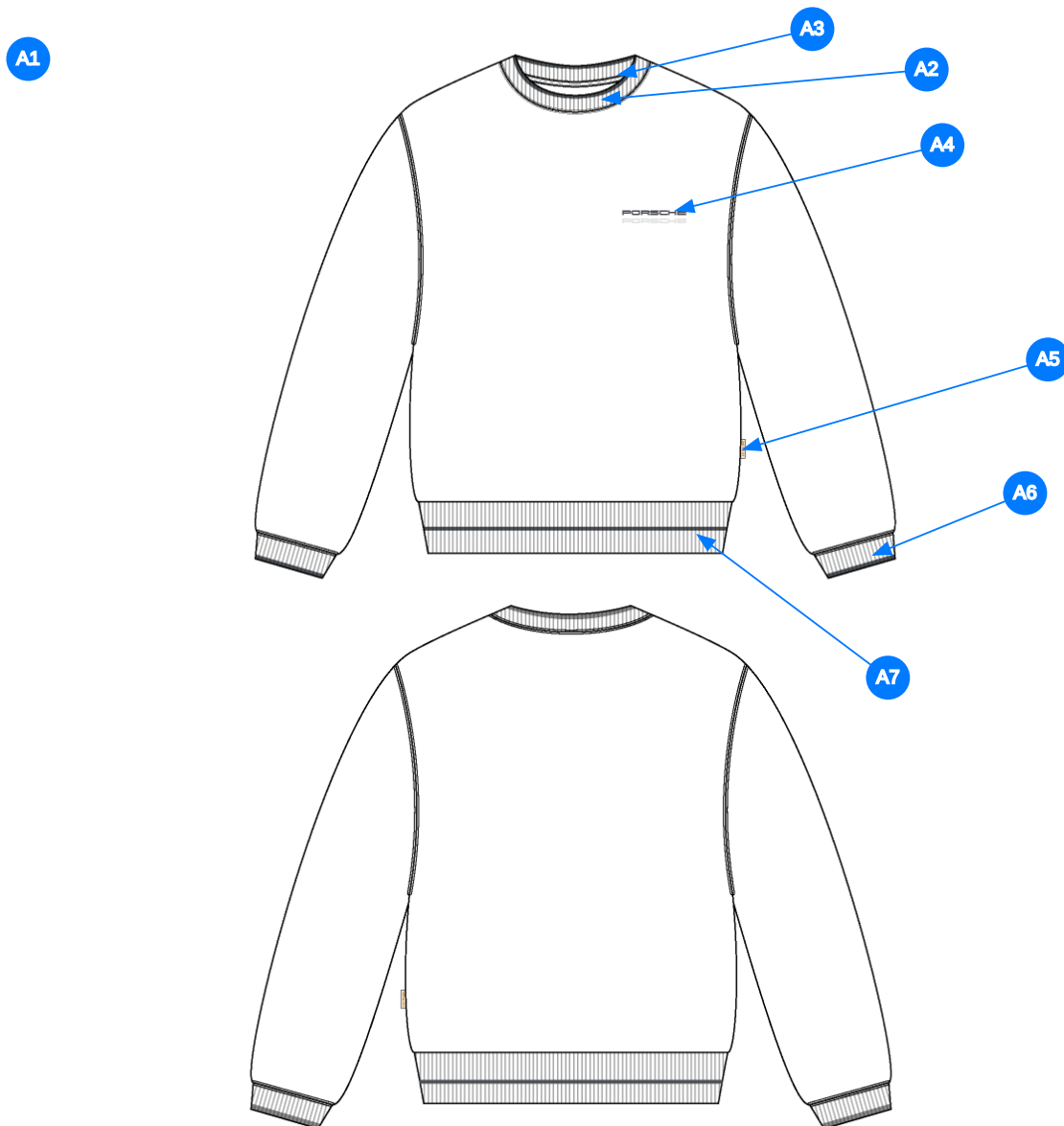
Name	Porsche Crewneck
Style No.	FW26CS015
Division	Mens
Category	Sweatshirts
Season	Fall/Winter
Year	2026
Size Scale	<div>M</div> -Sample size <div><div>XS</div><div>S</div><div>M</div><div>L</div><div>XL</div><div>XXL</div></div>
Style Status	Development
Factory	UN-AVAILABLE
Designer Name	Wes
TD Name	Anastasiya
Created by/Author	10/8/2025 Jeni Fitzgerald jeni.fitzgerald@aimeleondore.com



1\_B+W-1



2\_CLR-1

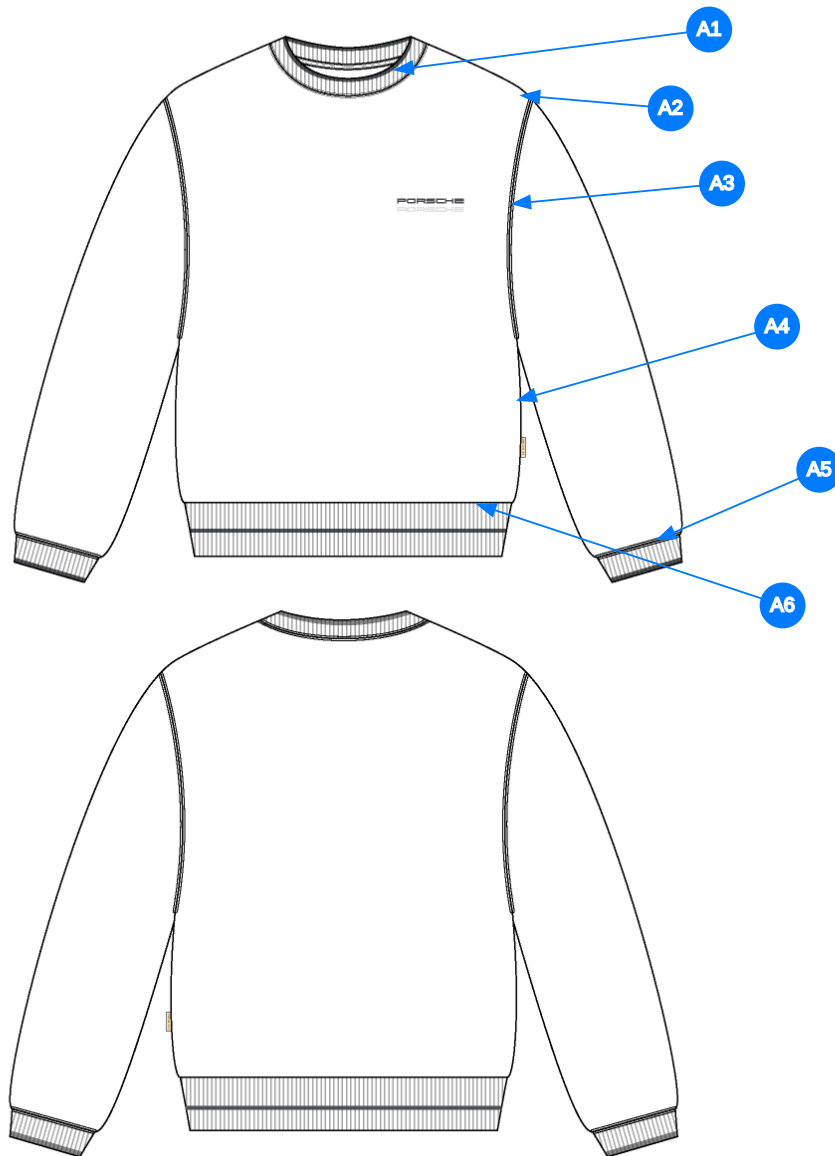


3\_CONSTRUCTION DETAILS-1

Comments (7)

- A1 FIT: CREWNECK BLOCK
- A2 STRIPE ARTWORK @ NECK RIBBING -SEE ADDITIONAL FILE FOR ARTWORK DETAILS
- A3 2X2 JACQUARD RIB DOUBLED @ COLLAR - HERRINGBONE TAPE ALONG NECK
- A4 ARTWORK @ WL CHEST - SEE ADDITIONAL PAGE FOR ARTWORK DETAILS
- A5 ALD PORSCHE WOVEN LABEL @ SIDE SEAM
- A6 2X2 JACQUARD RIB DOUBLED @ SLEEVE CUFF & BOTTOM HEM
- A7 STRIPE ARTWORK @ BOTTOM HEM & SLEEVE CUFF RIBBING -SEE ADDITIONAL FILE FOR ARTWORK DETAILS

1. fit crewneck block
2. bo cổ sọc
3. rib 2x2 2 lớp tại bo cổ - dây tape xương cá dọc viền cổ sau
4. artwork tại ngực trái
5. nhãn cờ tại sườn ngoài
6. rib 2x2 2 lớp tại lai tay + lai áo
7. rib sọc tại lai tay + lai áo



4\_STITCHING DETAILS-1

Comments (6)

- A1** STRADDLE STITCH @ NECK
- A2** CLEAN SEAM FINISH @ SHOULDER SEAM
- A3** STRADDLE STITCH @ ARMHOLE
- A4** CLEAN SEAM FINISH @ SIDE SEAM
- A5** STRADDLE STITCH @ SLEEVE CUFF
- A6** CLEAN SEAM FINISH @ BOTTOM HEM

1. điều rẽ tại cổ
2. may sạch tại đường may vai
3. điều rẽ tại đường may nách
4. may sạch tại đường may sườn
5. điều rẽ tại lai tay
6. may sạch tại lai áo

Sample Size: M

POINT OF MEASURE	CODE	HOW TO MEASURE	CRITICAL	TYPE	TOLERANCE	M
Front Body Length	S&K01	HPS to bottom edge	true	Full	1/2 in	27 in
Back Body Length	S&K02	CB neck seam to bottom edge	true	Full	1/2 in	25 3/4 in
Shoulder Seam Forward	S&K07	HPS to seam	false	Full	1/8 in	1/2 in
Shoulder Slope	S&K08	Shoulder point perpendicular to HPS	false	Full	1/4 in	2 in
Front Neck Drop	S&K04	HPS to neck seam	false	Full	1/8 in	4 in
Back Neck Drop	S&K05	HPS to neck seam	false	Full	1/8 in	1 1/4 in
Back Neck Width	S&K06	Seam to seam at back neck, at HPS point	false	Full	1/4 in	7 3/4 in
Neck Trim Height	S&K020	Neck Seam to trim edge	false	Full	1/8 in	13/16 in
Minimum Neck Stretch	S&K199		true	Half	0 in	11 1/2 in
Across Shoulder	S&K09	Seam to seam	false	Half	1/4 in	20 1/2 in
Across Front/Across Back Position from HPS	eos7YR		true	Full	0 in	7 in
Across Front	S&K010	Down from HPS, Seam to seam	false	Half	1/4 in	19 in
Across Back	S&K011	Down from HPS, Seam to Seam	false	Half	1/4 in	19 1/2 in
Chest Width	S&K012	1" Below armhole- edge to edge	true	Half	1/4 in	22 3/4 in
Bottom Opening 2" Above Rib Knit Seam	S&K		true	Half	1/4 in	21 3/4 in
Bottom Opening Width- At Seam	S&K108	Straight with seam relaxed	true	Half	1/2 in	20 1/4 in
Bottom Opening Width- At Edge	S&K013	At bottom edge	true	Half	1/4 in	17 in
Bottom Hem Height	S&K014	Bottom edge to stitch line or trim seam	false	Full	1/8 in	2 3/4 in
Sleeve Length from CB Neck	S&K032	3-point measure from CB Neck to shoulder point to sleeve edge	true	Full	1/2 in	35 in
Sleeve Cap Height	S&K102		true	Full	1/8 in	4 in
Armhole Drop	S&K016	Below HPS - measure perpendicular	false	Full	1/4 in	12 1/2 in
Bicep Width	S&K017	1" below armhole- edge to edge	false	Half	1/4 in	9 1/2 in
Forearm Width	S&K033	9" up from sleeve cuff edge	false	Half	1/4 in	7 1/4 in
Sleeve Opening Width 1" Above Rib Knit Seam	S&K		true	Half	1/4 in	5 3/8 in
Sleeve Opening Width- At Seam	S&K034	Width at Seam	false	Half	1/4 in	4 3/4 in
Sleeve Opening Width- At Edge	S&K73	At edge	false	Half	1/4 in	3 3/4 in
Sleeve Cuff Height	S&K36	Cuff edge to seam	false	Full	1/8 in	2 3/4 in
WL Chest Artwork Placement from HPS to Top Edge	S&K103		true	Full	1/8 in	8 in
WL Chest Artwork Placement Out from CF Line	S&K252		false	Full	1/8 in	2 1/2 in
Loop Label Placement at Sideseam	S&K023	Bottom edge to bottom of loop label, at the WL side seam	false	Full	1/8 in	7 in





Development - Sarah Tota

CREATED ON OCT 3, 2025 6:54 PM

FW26CS015 Porsche Crewneck  
Date: 10/3/24  
Status: Requesting 1st Proto in Size Medium  
TD: Sarah

Fit: NOSCS002 Micro Din Logo Crewneck

fit: tham khảo NOSCS002

COMPONENT		QTY	1.  PROTO
FABRIC			
1	<b>UA Loop Back Heavy Fleece</b> CODE: C2300234 French Terry Placement: BODY, SLEEVES Supplier: UNAVAILABLE Weight: 530gsm		-  Jet Black Custom Code: 19-0303 TCX  Price: 0.00
2	<b>UA 2x2 Terry Rib</b> CODE: C2300246 Placement: COLLAR, CUFFS, HEM Notes: FOLLOW ARTWORK FILE FOR Y/D STRIPE Supplier: UNAVAILABLE		-  Jet Black Custom Code: 19-0303 TCX  Price: 0.00
3	<b>UA Herringbone Tape</b> CODE: ALTAPE1 Placement: STRADDLED OVER BACK NECK SEAM F/ SH TO SH Supplier: UNAVAILABLE		-  Jet Black Custom Code: 19-0303 TCX Width: 3/8" Price: 0.00
4	<b>ARTWORK</b> CODE: AS CORRESPONDING FILE Placement: WL CHEST Notes: FOLLOW ARTWORK FILE AND POM Supplier: Factory Sourced		- ARTWORK  Price: 0.00
5	<b>ARTWORK</b> CODE: AS CORRESPONDING FILE Placement: COLLAR, CUFFS, HEM Notes: FOLLOW ARTWORK FILE AND POM Supplier: Factory Sourced		- ARTWORK  Price: 0.00
LABEL AND TRIM PACKAGE			
Components 5			Total 0.00