



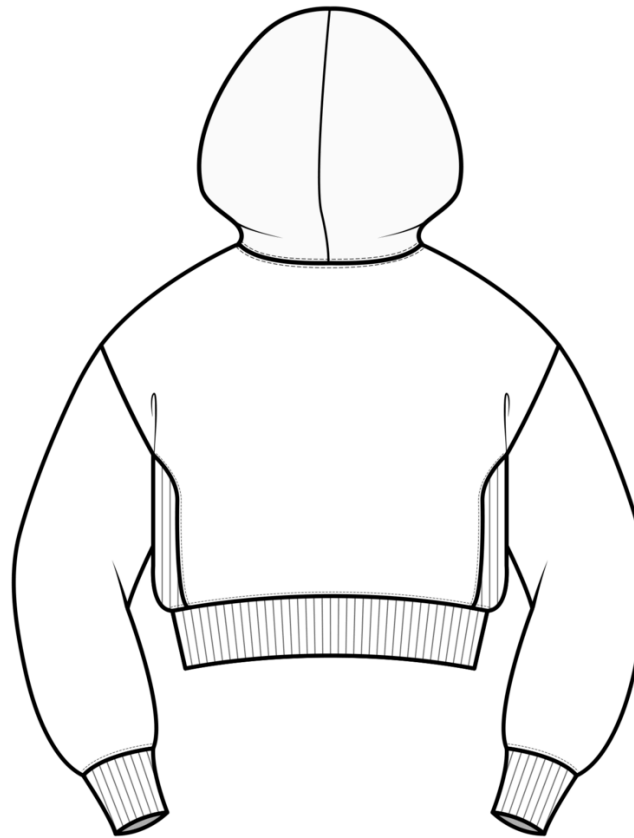
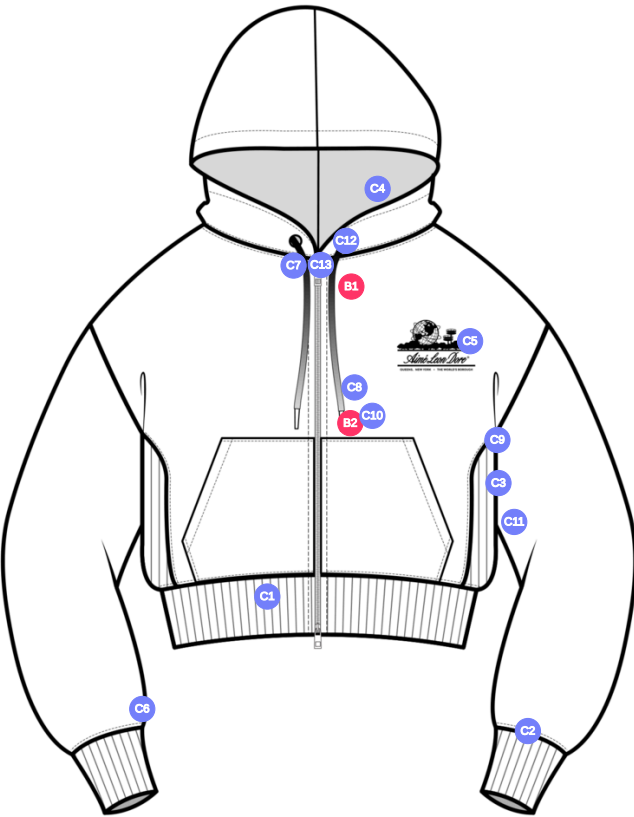
CROSSKNIT FULL ZIP HOODIE

Name	CROSSKNIT FULL ZIP HOODIE
Style No.	FW26CH009
Division	Womens
Category	Hoodies
Season	Fall/Winter
Year	2026
Size Scale	<div>M</div> -Sample size
	<div>XS</div> <div>S</div> <div>M</div> <div>L</div> <div>XL</div>
Style Status	Development
Factory	UN-AVAILABLE
Designer Name	Sylvie
TD Name	Anastasiya
Created by/Author	10/3/2025 Jeni Fitzgerald jeni.fitzgerald@aimeleondore.com



009-1

1. rib gập đôi tại lai áo
2. rib gập đôi tại lai tay
3. rib 1 lớp tại phôi sườn - không có đường may sườn
4. nón 2 lớp với điều 1 kim 7/8" từ mép cho hầm nón luôn dây luôn
5. hình in tại ngực trái hạ thẳng từ đỉnh vai 7"



## Components (2)

- B1** YKK Branded Zipper Slider
- B2** #3 YKK DOUBLE ENDED METAL ZIPPER

## Construction Details (13)

- C1** 1x1 Rib @ Hem On Fold
- C2** 1x1 Rib @ Sleeve Cuff on Fold
- C3** 1X1 SINGLE LAYER SELF RIB INSERTED AT SIDE PANEL- NO SIDE SEAM
- C4** DOUBLE LAYER SELF HOOD WITH SNTS 7/8" FROM EDGE FOR DRAWCORD TUNNEL
- C5** UNISPHERE LOGO PRINT PLACED 7" DOWN FROM HPS (SEE ARTWORK)
- C6** 1/8" SNTS ABOVE CUFF
- C7** SNTP 1/8" STRADDLE NECK SEAM
- C8** #3 DOUBLE ENDED METAL ZIPPER HIDDEN ZIPPER CONSTRUCTION
- C9** 1/8" SNTS ON SELF AT RIB PANEL
- C10** KNOT END OF COTTON BRAIDED CORD
- C11** ALD WOVEN LOOP LABEL INSERTED @ WL FRONT PANEL
- C12** 22L METAL RIVET AS ORIGINAL SAMPLE ANTIQUE BRASS
- C13** 3/8" NECK TAPE AND CENTER FRONT TAPE TO CLEAN FINISH ZIPPER

6. điều 1 kim 1/8" tại lai tay
7. điều rẽ 1/8" tại đường may cổ
8. dây kéo metal 2 đầu răng 3 với cấu trúc nếp che dây kéo.
9. điều 1 kim 1/8" trên vải chính tại phôi rib ở sườn
10. dây luôn cotton gút đầu
11. nhãn cờ tại sườn trái trước
12. mắt cáo Antique brass 22l
13. dây tape 3/8" tại cổ và viền sạch dây kéo

009-1



Screenshot 2025-08-08 at 11-1



Screenshot 2025-08-08 at 11-1



Screenshot 2025-08-08 at 11-1





Screenshot 2025-08-08 at 11-1



Unisphere2-1



Sample Size: M

POINT OF MEASURE	CODE	HOW TO MEASURE	CRITICAL	TYPE	TOLERANCE	XS	S	M	L	XL
Front Body Length	S&K01	HPS to bottom edge	true	Full	1/2 in	20 1/2 in	21 in	21 1/2 in	22 in	22 1/2 in
Back Body Length	S&K02	CB neck seam to bottom edge	true	Full	1/2 in	19 1/2 in	20 in	20 1/2 in	21 in	21 1/2 in
Shoulder Seam Forward	S&K07	HPS to seam	false	Full	1/8 in	0 in	0 in	0 in	0 in	0 in
Shoulder Slope	S&K08	Shoulder point perpendicular to HPS	false	Full	1/4 in	2 1/2 in	2 1/2 in	2 1/2 in	2 1/2 in	2 1/2 in
Front Neck Drop	S&K04	HPS to neck seam	false	Full	1/8 in	3 1/4 in	3 3/8 in	3 1/2 in	3 5/8 in	3 3/4 in
Back Neck Drop	S&K05	HPS to neck seam	false	Full	1/8 in	1 in	1 in	1 in	1 in	1 in
Back Neck Width	S&K06	Seam to seam at back neck, at HPS point	false	Full	1/4 in	9 1/4 in	9 1/2 in	9 3/4 in	10 in	10 1/4 in
Minimum Neck Stretch	S&K199		true	Half	0 in	11 1/2 in	11 1/2 in	11 1/2 in	11 1/2 in	11 1/2 in
Across Shoulder	S&K09	Seam to seam	false	Half	1/4 in	21 in	21 1/2 in	22 in	22 1/2 in	23 1/4 in
Across Front/Across Back Position from HPS	eos7YR		true	Full	0 in	5 in	5 1/4 in	5 1/2 in	5 3/4 in	6 in
Across Front	S&K010	Down from HPS, Seam to seam	false	Half	1/4 in	20 in	20 1/2 in	21 in	21 1/2 in	22 1/4 in
Across Back	S&K011	Down from HPS, Seam to Seam	false	Half	1/4 in	20 1/2 in	21 in	21 1/2 in	22 in	22 3/4 in
Chest Width	S&K012	1" Below armhole- edge to edge	true	Half	1/4 in	20 1/2 in	21 1/2 in	22 1/2 in	23 1/2 in	24 3/4 in
Bottom Opening 2" Above Rib Knit Seam	S&K		true	Half	1/4 in	19 1/2 in	20 1/2 in	21 1/2 in	22 1/2 in	23 3/4 in
Bottom Opening Width- Along Seam Relaxed	S&K108		true	Half	1/2 in	19 in	20 in	21 in	22 in	23 1/4 in
Bottom Opening Width- At Edge	S&K013	At bottom edge	true	Half	1/4 in	16 1/2 in	17 1/2 in	18 1/2 in	19 1/2 in	20 3/4 in
BOTTOM RIB HEIGHT	S&K014	Bottom edge to stitch line or trim seam	false	Full	1/8 in	2 in	2 in	2 in	2 in	2 in
SIDE PANEL WIDTH 1" BELOW ARMHOLE SEAM	eMtOy2	Seam to Seam	true	Full	1/8 in	4 1/4 in	4 1/2 in	4 1/2 in	4 1/2 in	4 3/4 in
SIDE PANEL WIDTH AT RIB JOIN - EXTENDED	xGBAdx		true	Full	1/4 in	4 1/2 in	4 1/2 in	4 1/2 in	4 1/2 in	4 3/4 in
Sleeve Length from CB Neck	S&K032	3-point measure from CB Neck to shoulder point to sleeve edge	true	Full	1/2 in	35 in	35 1/2 in	36 in	36 1/2 in	37 in
Armhole Drop	S&K016	Below HPS - measure perpendicular	false	Full	1/4 in	11 1/2 in	11 3/4 in	12 in	12 1/4 in	12 5/8 in
Bicep Width	S&K017	1" below armhole- edge to edge	false	Half	1/4 in	9 1/2 in	9 7/8 in	10 1/4 in	10 5/8 in	11 1/8 in
Sleeve Opening Width 1" Above Rib Knit Seam	S&K		true	Half	1/4 in	5 in	5 1/4 in	5 1/2 in	5 3/4 in	6 in
Sleeve Opening Width- At Seam	S&K034	Width at Seam	false	Half	1/4 in	4 in	4 1/4 in	4 1/2 in	4 3/4 in	5 in
Sleeve Opening Width- At Edge	S&K73	At edge	false	Half	1/4 in	3 in	3 1/4 in	3 1/2 in	3 3/4 in	4 in
Sleeve Cuff Height	S&K36	Cuff edge to seam	false	Full	1/8 in	4 in	4 in	4 in	4 in	4 in
Loop Label Placement at SIDE PANEL	S&K023	Bottom edge to bottom of loop label, at the WL side PANEL SEAM	false	Full	1/8 in	7 in	7 in	7 in	7 in	7 in
SLEEVE PANEL WIDTH 1" BELOW ARMHOLE	anCNbG		true	Full	0 in	4 1/4 in	4 1/2 in	4 1/2 in	4 1/2 in	4 3/4 in
SLEEVE PANEL WIDTH AT RIB JOIN - EXTENDED	GltsPe		true	Full	0 in	2 1/2 in	2 3/4 in	2 3/4 in	2 3/4 in	3 in
HOOD HEIGHT FROM HPS TO TOP EDGE	CQsSXY		false	Full	1/4 in	13 1/2 in	13 3/4 in	14 in	14 1/4 in	14 1/2 in
HOOD WIDTH 5" BELOW TOP EDGE	CMJQ8l		false	Full	1/4 in	10 1/2 in	10 3/4 in	11 in	11 1/4 in	11 1/2 in
Kangaroo Pocket Height At Center	S&K044	Height at center	false	Full	1/4 in	7 1/2 in	7 1/2 in	7 1/2 in	7 1/2 in	7 1/2 in
Kangaroo Pocket Width at Top Edge	S&K045	Width at top edge	false	Full	1/4 in	4 1/2 in	4 1/2 in	4 1/2 in	4 1/2 in	4 1/2 in
Kangaroo Pocket Width at Bottom	S&K046	Width at Bottom Edge	false	Full	1/4 in	6 1/2 in	6 1/2 in	6 1/2 in	6 1/2 in	6 1/2 in
Kangaroo Pocket Opening Hem Height	S&K205		false	Full	1/8 in	1 in	1 in	1 in	1 in	1 in
Kangaroo Pocket Height at Sides	S&K219		false	Full	1/8 in	3 1/2 in	3 1/2 in	3 1/2 in	3 1/2 in	3 1/2 in
FRONT ARTWORK PLACEMENT FROM HPS	S&K		false	Full	1/4 in	6 in	6 in	6 in	6 in	6 in
FRONT ARTWORK PLACEMENT FROM CF	S&K		false	Full	1/4 in	3 1/4 in	3 1/4 in	3 1/4 in	3 1/4 in	3 1/4 in

DEVELOPMENT 1ST PROTO REQ - Kay Whittle

CREATED ON OCT 2, 2025 3:39 PM

CROSSKNIT FULL ZIP HOODIE - FW26CH009

Date: 10/2/25

Status: Requesting 1st Proto

TD: Kay

Development Notes:







- Create a pattern based on the measurements and sketch provided.

làm rập dựa trên thông số và sketch.

CROSSKNIT FULL ZIP HOODIE - FW26CH009



CROSSKNIT FULL ZIP HOODIE - FW26CH009 - REF.jpg

COMPONENT		QTY	1. NO COLOR ASSIGNED
FABRIC			
1	CHAINTEX, BBP09612-00 CODE: SGSU8 Placement: BODY, SLEEVES, HOOD		- CHAINTEX, BBP09612-00 Price: 0.00
2	1X1 COTTON RIB - MATCH TO BODY CODE: YPT1i Placement: HEM, CUFFS, SIDE PANELS		- 1X1 COTTON RIB - MATCH TO BODY Price: 0.00
TRIM			
3	#3 YKK DOUBLE ENDED METAL ZIPPER CODE: jvVYk Placement: CF	1	- #3 YKK DOUBLE ENDED METAL ZIPPER Price: 0.00
4	YKK Branded Zipper Slider CODE: DA8AED01 Placement: CF ZIPPER Supplier: YKK Country of Origin: CHINA	1 Piece	-  Undefined Price: 0.00
5	YKK Zipper Tape CODE: YKK Placement: CF ZIPPER	1	-  Undefined Price: 0.00
6	SS24-CRDW CODE: UA Cotton Round Drawcord Placement: AT CF HOOD Notes: KNOTTED ENDS Supplier: UNAVAILABLE		-  Undefined Price: 0.00
7	EY-GOLD1 CODE: UA Gold Generic Eyeletes Placement: AT CF HOOD Notes: 22L Supplier: UNAVAILABLE		-  ANTIQUE BRASS Price: 0.00
8	ARTWORK CODE: SCREEN PRINT Placement: APPLIED AT WEARER'S LEFT CHEST Supplier: Factory Sourced		- ARTWORK Price: 0.00
9	UA Herringbone Tape CODE: ALTAPE1 Placement: CB NECK INTERIOR + CF ZIPPER Supplier: UNAVAILABLE		-  Undefined Width: 3/8" Price: 0.00
LABELS & PACKAGING			
10	ALD Woven Main Label W/ Size CODE: ALD-ML03 Placement: FOLLOW LABEL + PACKAGING GUIDE Supplier: Colonial Country of Origin: CHINA	1 Piece	- ALD Woven Main Label W/ Size Price: 0.079
11	ALD Woven Loop Label CODE: ALD-ML02 Placement: FOLLOW LABEL + PACKAGING GUIDE Supplier: Colonial		-  Parmesan Base / Gold Text Price: 0.00
Components 11			Total 0.079