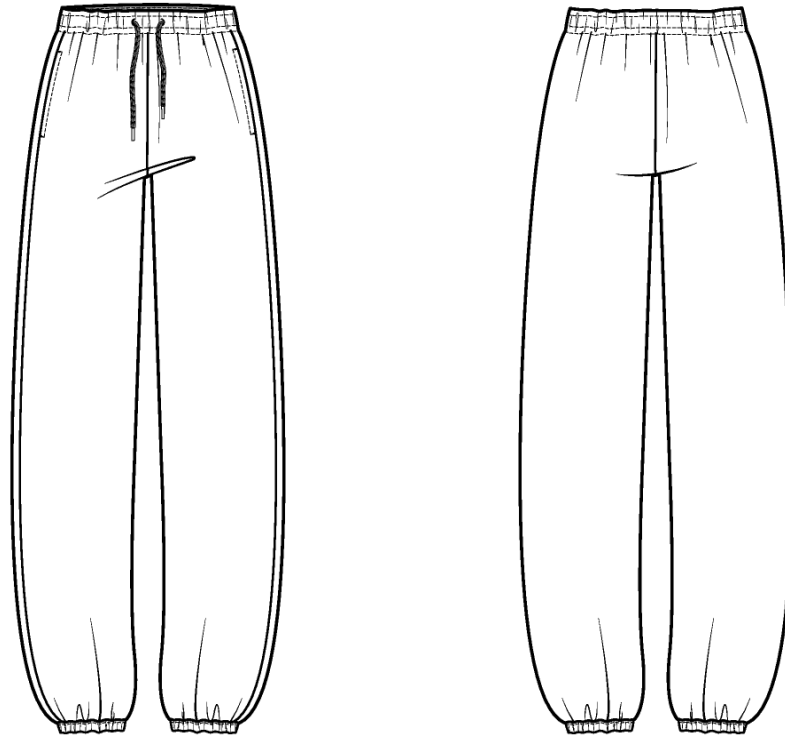
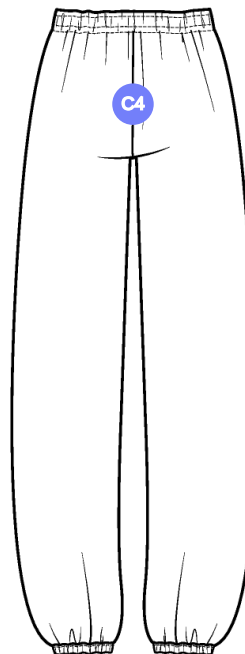
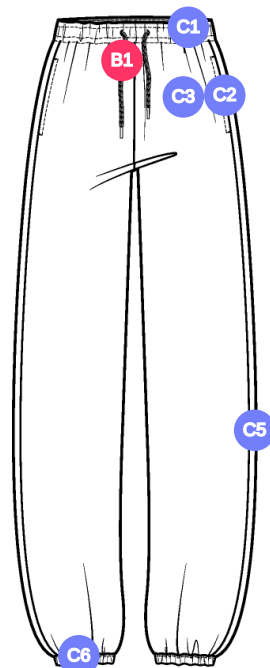


SCRIPT SWEATPANT

Name	SCRIPT SWEATPANT
Style No.	FW26CP004
Division	Womens
Category	Sweatpants
Season	Fall/Winter
Year	2026
Size Scale	M -Sample size
	<div>XS S M L XL</div>
Style Status	Development
Factory	UN-AVAILABLE
Designer Name	Sylvie
TD Name	Anastasiya
Created by/Author	10/3/2025 Jeni Fitzgerald jeni.fitzgerald@aimeleondore.com



32A-1



Components (1)

B1 3/8" FLAT COTTON BRAIDED DRAWCORD - ROOPA

Construction Details (6)

- C1** 1.5" GROWN ON WAISTBAND W/ DRAWCORDS - COTTON FLAT BRAIDED DRAWCORDS - DRAWCORD FINISHED W/ TURNBACK - THREAD BUTTON HOLE - INSERTED ELASTIC
- C2** ON SEAM POCKETS WITH 1/4" SN TOP STITCH WITH BARTACKS TOP AND BOTTOM @ SIDE SEAM - USE COTTON JERSEY FOR POCKET BAG AT TOP SIDE
- C3** ARTWORK @ WL LEG - SEE SEPARATE FILE FOR ARTWORK DETAILS -PLACED 4.5" DOWN FROM TOP OF WAISTBAND EDGE AND 1.5" FROM SIDE SEAM
- C4** FIVE THREAD OVERLOCK @ FRONT AND BACK RISE, SIDE SEAMS
- C5** SIDE SEAM PLACED SLIGHTLY FORWARD -CLEAN SEAM FINISH @ SIDE SEAM
- C6** 3/4" TURNBACK WITH INSERTED ELASTIC @ BOTTOM CUFF

1. lưng liền 1.5" với dây luồn đẹp gấp đầu - thùy khuy - thun lưng
2. điều 1 kim 1/4" tại túi sườn, bộ cạnh trên và cạnh dưới túi - sử dụng vải jersey làm lót túi mặt mu bàn tay.
3. hình thêu tại ống quần trái - vị trí từ đầu lưng 4.5" và từ sườn 1.5"
4. Vắt sổ 5 chỉ ở đường may đáy trước và sau, đường may sườn
5. đường may sườn chồm về phía trước - may sạch tại đường may sườn
6. gấp đôi 3/4" tại ống quần thun

32A-1 (Copy)

The image shows the 'Aimé Leon Dore' brand logo in a black, elegant script font. Below the text is a horizontal double-headed arrow indicating a width of 2.5 inches. The text 'Aimé Leon Dore' is centered above the arrow, and the measurement '2.5"' is centered below the arrow.

SCRIPT LOGO 2-1

Sample Size: M

POINT OF MEASURE	CODE	HOW TO MEASURE	CRITICAL	TYPE	TOLERANCE	XS	S	M	L	XL
Waistband Height	S&K49	Waist seam to top edge	false	Full	1/8 in	1 1/2 in	1 1/2 in	1 1/2 in	1 1/2 in	1 1/2 in
Waist Width Relaxed	S&K50	Straight at top edge- garment relaxed	true	Half	1/2 in	13 in	14 in	15 in	16 in	17 in
Waist Width Extended	S&K51	Straight, with waist or elastic stretched	true	Half	1/2 in	18 in	19 in	20 in	21 in	22 in
Distance Between Drawcord Exit	S&K294	EXTENDED	false	Full	1/8 in	1 1/2 in	1 1/2 in	1 1/2 in	1 1/2 in	1 1/2 in
Exposed Drawcord Length	JHqvA4		false	Full	1/2 in	10 in	10 in	10 in	10 in	10 in
Front Rise	S&K53	Crotch seam to waistband top edge	true	Half	3/8 in	10 3/4 in	11 1/4 in	11 3/4 in	12 1/4 in	12 3/4 in
Back Rise	S&K54	Crotch seam to waistband top edge	true	Half	3/8 in	15 1/4 in	15 3/4 in	16 1/4 in	16 3/4 in	17 1/4 in
Low Hip Position Below Waistband Top Edge	S&K55		true	Full	0 in	7 1/2 in	7 3/4 in	8 in	8 1/4 in	8 1/2 in
Low Hip Width	S&K56	3-pt measurement taken 8" down from waistband top edge	true	Half	1/2 in	21 in	22 in	23 in	24 in	25 1/4 in
Thigh Width	S&K57	1" below crotch point	false	Half	3/8 in	13 in	13 5/8 in	14 1/4 in	14 7/8 in	15 1/2 in
Knee Width	S&K58	12" down from the crotch point	false	Half	3/8 in	10 1/2 in	11 in	11 1/2 in	12 in	12 1/2 in
Leg Opening Width Relaxed	S&K421		false	Half	1/4 in	5 in	5 1/4 in	5 1/2 in	5 3/4 in	6 1/8 in
Leg Opening Width Extended	S&K059	Straight at edge	false	Half	1/4 in	8 in	8 1/4 in	8 1/2 in	8 3/4 in	9 1/8 in
Bottom Hem Height	S&K014	Bottom edge to stitch line or trim seam	false	Full	1/8 in	1 in	1 in	1 in	1 in	1 in
Inseam Length	S&K60	Crotch point to leg opening, along seam	true	Full	1/2 in	30 1/2 in	30 1/2 in	30 1/2 in	30 1/2 in	30 1/2 in
Front Pocket Placement Below Waistband	S&K62	Waistband seam to top of pocket	false	Full	1/4 in	3/4 in	3/4 in	3/4 in	3/4 in	3/4 in
Front Pocket Opening Length	S&K63	Along opening edge	false	Full	1/4 in	6 in	6 1/8 in	6 1/4 in	6 3/8 in	6 1/2 in
Pocket Bag Height	S&K030	Top edge to bottom edge of pocket bag inside	false	Full	1/8 in	11 1/4 in	11 3/8 in	11 1/2 in	11 5/8 in	11 3/4 in
Pocket Bag Width	S&K199		false	Full	1/8 in	6 3/4 in	6 7/8 in	7 in	7 1/8 in	7 1/4 in
WL Front Artwork Placement Below Pocket Edge	U4foLw		true	Full	1/8 in	1/2 in	5/8 in	5/8 in	5/8 in	3/4 in
WL Front Artwork Forward From Outseam	4A0dDV		true	Full	1/8 in	2 1/4 in	2 3/8 in	2 3/8 in	2 3/8 in	2 1/2 in

DEVELOPMENT 1ST PROTO REQ - Kay Whittle

CREATED ON SEP 25, 2025 3:54 PM

FW26CP004

Date: 9/25/25

Status: Requesting 1st Proto

TD: Kay

Development Notes:

- Create a pattern based on the measurements provided.
- No reference pattern, match construction to MENS SS25 NOSCP002

- làm rập dựa vào thông số
- không có rập tham khảo, cấu trúc giống mã NOSCP002

COMPONENT		QTY	1. NO COLOR ASSIGNED
FABRIC			
1	CHAI NTEX, BBP09612-00 CODE: SGSU8 Placement: BODY		- CHAI NTEX, BBP09612-00 Price: 0.00
TRIM			
2	SS24-CRDW CODE: UA Cotton Round Drawcord Placement: CF WAISTBAND Notes: KNOTTED ENDS Supplier: UNAVAILABLE		- Undefined Price: 0.00
3	THREAD EYELET CODE: THREAD EYELET Placement: DRAWCORD EXITS Supplier: Factory Sourced	2	- Undefined Price: 0.00
4	ELASTIC CODE: ELASTIC Placement: INSIDE CF WAISTBAND, BOTTOM CUFFS Supplier: Factory Sourced		- Undefined WIDTH: Undefined Price: 0.00
5	ARTWORK CODE: EMBROIDERY Placement: 1 AT WEARER'S LEFT POCKET, 1 AT WEARER'S LEFT KNEE Supplier: Factory Sourced	2	- ARTWORK Price: 0.00
LABELS & PACKAGING			
6	ALD Woven Main Label W/ Size CODE: ALD-ML03 Placement: FOLLOW LABEL + PACKAGING GUIDE Supplier: Colonial Country of Origin: CHINA	1 Piece	- ALD Woven Main Label W/ Size Price: 0.079
Components 6			Total 0.079