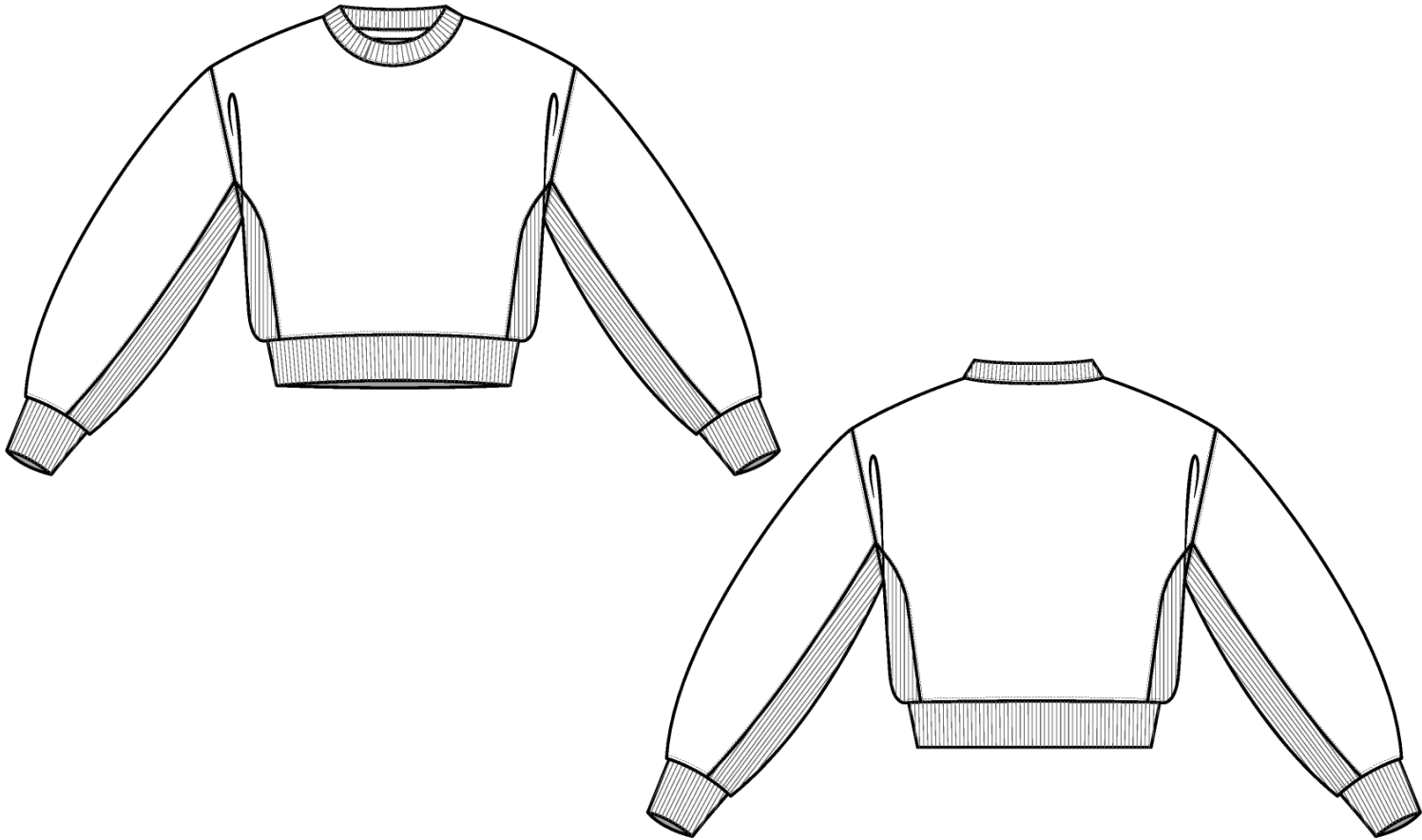
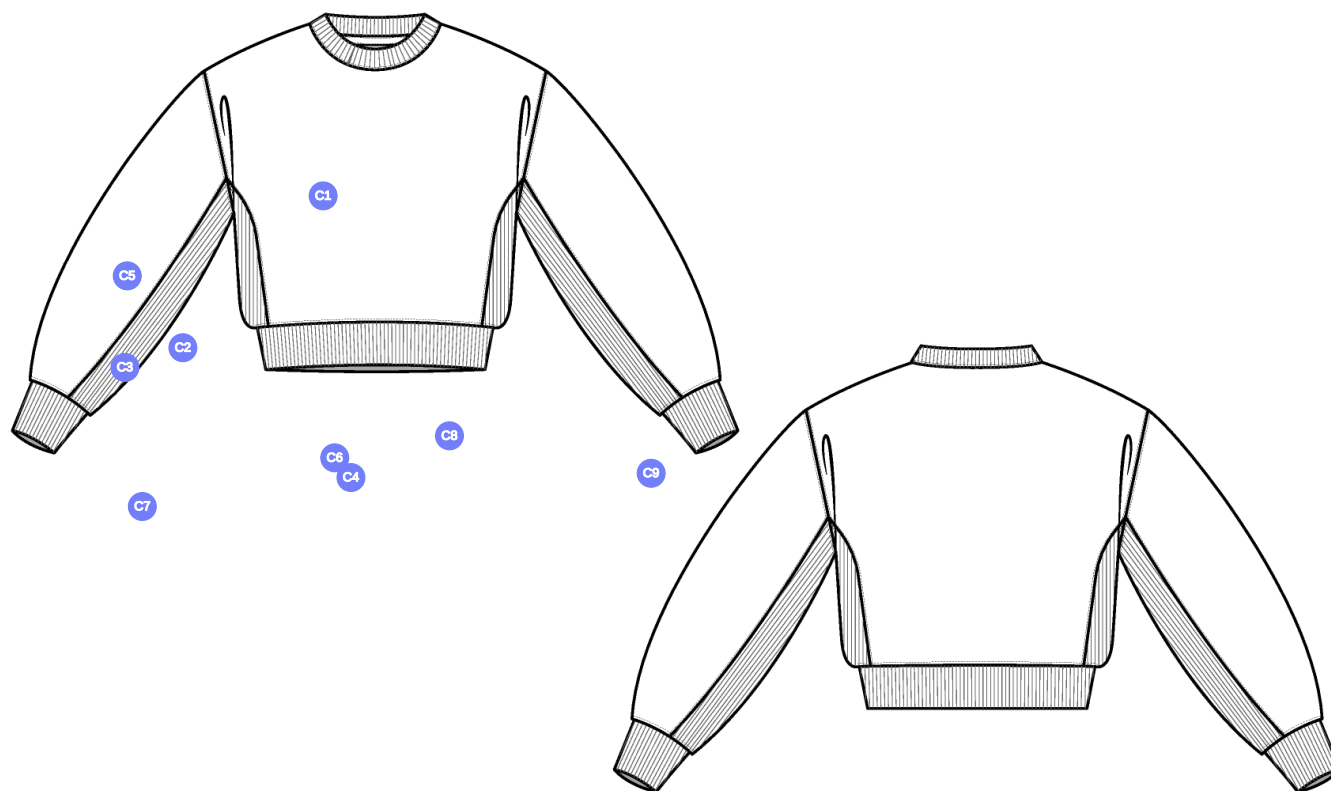


CROPPED CROSSKNIT CREWNECK

Name	CROPPED CROSSKNIT CREWNECK
Style No.	FW26CS011
Division	Womens
Category	Sweatshirts
Season	Fall/Winter
Year	2026
Size Scale	M -Sample size
	XS S M L XL
Created by/Author	10/1/2025 Jeni Fitzgerald jeni.fitzgerald@aimeleondore.com



38-1

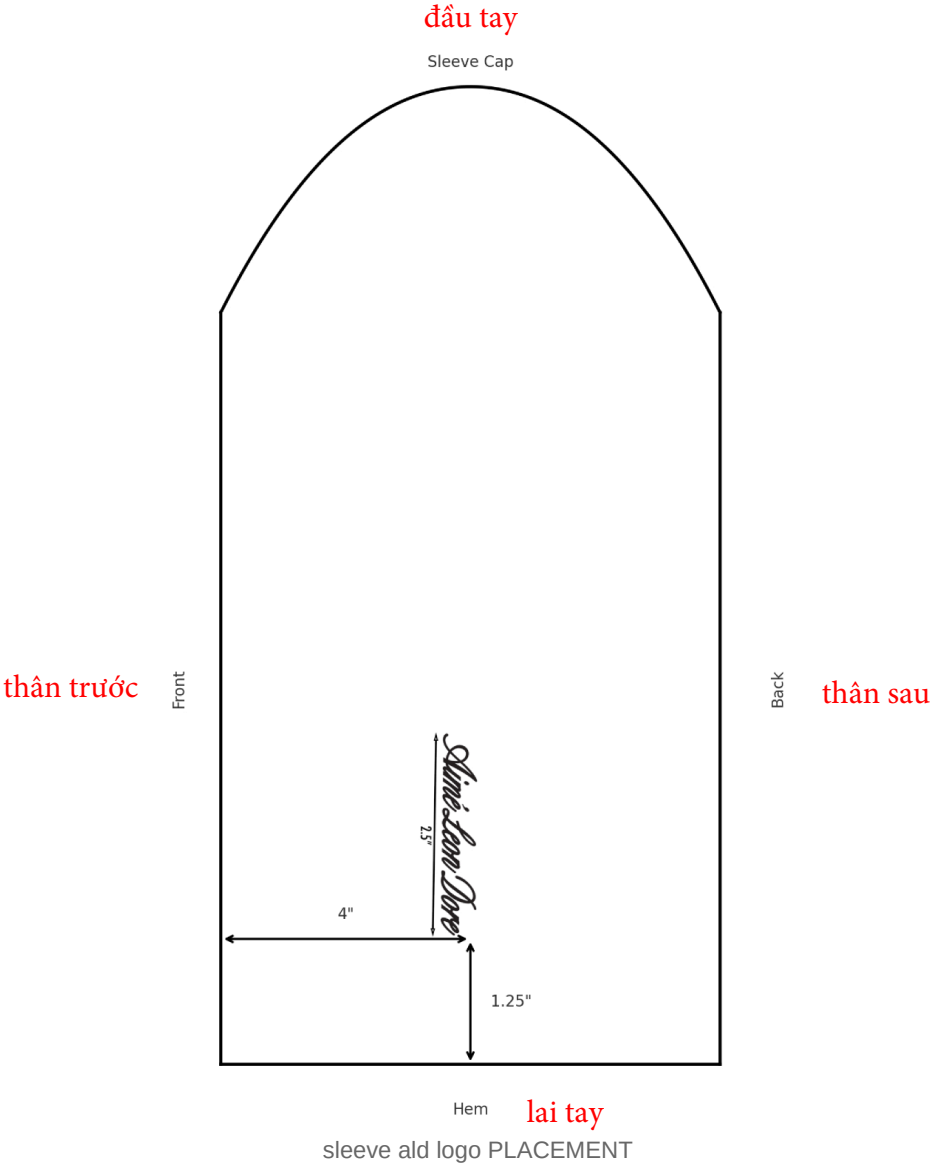


## Construction Details (9)

- C1** 1X1 Rib @ Neck on Fold
- C2** 1X1 SELF RIB SINGLE LAYER INSERTED INTO STRAIGHT SIDE PANEL (NO SIDE SEAM) TOP STITCH ON SELF EDGE
- C3** 1X1 SELF RIB SINGLE LAYER INSERTED INTO STRAIGHT UNDER ARM PANEL TOP STITCH ON SELF EDGE ON FRONT AND BACK SLEEVE
- C4** 1x1 Rib @ Hem On Fold
- C5** STRADDLE 1/8" TOP STITCH AROUND ARMHOLE
- C6** 1/8" TOP STITCH AT TOP OF RIB ON SELF EDGE
- C7** 1/8" TOP STITCH AT TOP OF SLEEVE CUFF ON SELF
- C8** ALD WOVEN LOOP LABEL INSERTED @ WL FRONT PANEL
- C9** ALD SCRIPT LOGO DIRECT EMBROIDERY (SEE ARTWORK FOR PLACEMENT)

1. rib 1x1 gấp đôi tại cổ
2. rib 1x1 1 lớp tại sườn (không đường may sườn) điều trên mép vải chính
3. rib 1x1 1 lớp tại dưới cánh tay điều trên mép vải chính tại tay trước và sau
4. rib 1x1 gấp đôi tại lai áo
5. điều rã 1/8" quanh nách
6. điều 1/8" tại cạnh trên của rib trên mép của vải chính
7. điều 1/8" tại cạnh trên của lai tay trên vải chính
8. nhãn cờ tại sườn trái trước
9. hình thêu tại tay.

38-1 (Copy)



Sample Size: M

POINT OF MEASURE	CODE	HOW TO MEASURE	CRITICAL	TYPE	TOLERANCE	XS	S	M	L	XL
Front Body Length	S&K01	HPS to bottom edge	true	Full	1/2 in	21 1/2 in	22 in	22 1/2 in	23 in	23 1/2 in
Back Body Length	S&K02	CB neck seam to bottom edge	true	Full	1/2 in	20 1/2 in	21 in	21 1/2 in	22 in	22 1/2 in
Shoulder Seam Forward	S&K07	HPS to seam	false	Full	1/8 in	1/2 in	1/2 in	1/2 in	1/2 in	1/2 in
Shoulder Slope	S&K08	Shoulder point perpendicular to HPS	false	Full	1/4 in	1 1/4 in	1 1/4 in	1 1/4 in	1 1/4 in	1 1/4 in
Front Neck Drop	S&K04	HPS to neck seam	false	Full	1/8 in	3 1/4 in	3 3/8 in	3 1/2 in	3 5/8 in	3 3/4 in
Back Neck Drop	S&K05	HPS to neck seam	false	Full	1/8 in	1 in	1 in	1 in	1 in	1 in
Back Neck Width	S&K06	Seam to seam at back neck, at HPS point	false	Full	1/4 in	7 1/4 in	7 1/2 in	7 3/4 in	8 in	8 1/4 in
Neck Trim Height	S&K020	Neck Seam to trim edge	false	Full	1/8 in	1 in	1 in	1 in	1 in	1 in
Minimum Neck Stretch	S&K199		true	Half	0 in	11 1/2 in	11 1/2 in	11 1/2 in	11 1/2 in	11 1/2 in
Across Shoulder	S&K09	Seam to seam	false	Half	1/4 in	16 in	16 1/2 in	17 in	17 1/2 in	18 1/4 in
Across Front/Across Back Position from HPS	eos7YR		true	Full	0 in	5 in	5 1/4 in	5 1/2 in	5 3/4 in	6 in
Across Front	S&K010	Down from HPS, Seam to seam	false	Half	1/4 in	15 in	15 1/2 in	16 in	16 1/2 in	17 1/4 in
Across Back	S&K011	Down from HPS, Seam to Seam	false	Half	1/4 in	15 1/2 in	16 in	16 1/2 in	17 in	17 3/4 in
Chest Width	S&K012	1" Below armhole- edge to edge	true	Half	1/4 in	19 1/2 in	20 1/2 in	21 1/2 in	22 1/2 in	23 3/4 in
Bottom Opening 2" Above Rib Knit Seam	S&K		true	Half	1/4 in	19 in	20 in	21 in	22 in	23 1/4 in
Bottom Opening Width- Along Seam Relaxed	S&K108		true	Half	1/2 in	16 1/4 in	17 1/4 in	18 1/4 in	19 1/4 in	20 1/2 in
Bottom Opening Width- At Edge	S&K013	At bottom edge	true	Half	1/4 in	15 in	16 in	17 in	18 in	19 1/4 in
Bottom Hem Height	S&K014	Bottom edge to stitch line or trim seam	false	Full	1/8 in	2 1/2 in	2 1/2 in	2 1/2 in	2 1/2 in	2 1/2 in
SIDE PANEL WIDTH 1" BELOW ARMHOLE SEAM	eMtOy2	Seam to Seam	true	Full	1/8 in	4 3/4 in	5 in	5 in	5 in	5 1/4 in
SIDE PANEL WIDTH AT RIB JOIN - EXTENDED	xGBAdx		true	Full	1/4 in	5 in	5 in	5 in	5 in	5 1/4 in
Sleeve Length from CB Neck	S&K032	3-point measure from CB Neck to shoulder point to sleeve edge	true	Full	1/2 in	33 in	33 1/2 in	34 in	34 1/2 in	35 in
Armhole Drop	S&K016	Below HPS - measure perpendicular	false	Full	1/4 in	10 3/4 in	11 in	11 1/4 in	11 1/2 in	11 7/8 in
Bicep Width	S&K017	1" below armhole- edge to edge	false	Half	1/4 in	9 1/2 in	9 7/8 in	10 1/4 in	10 5/8 in	11 1/8 in
Sleeve Opening Width 1" Above Rib Knit Seam	S&K		true	Half	1/4 in	4 3/4 in	5 in	5 1/4 in	5 1/2 in	5 3/4 in
Sleeve Opening Width- At Seam	S&K034	Width at Seam	false	Half	1/4 in	3 3/4 in	4 in	4 1/4 in	4 1/2 in	4 3/4 in
Sleeve Opening Width- At Edge	S&K73	At edge	false	Half	1/4 in	2 1/2 in	2 3/4 in	3 in	3 1/4 in	3 1/2 in
Sleeve Cuff Height	S&K36	Cuff edge to seam	false	Full	1/8 in	2 in	2 in	2 in	2 in	2 in
Loop Label Placement at SIDE PANEL	S&K023	Bottom edge to bottom of loop label, at the WL side PANEL SEAM	false	Full	1/8 in	7 in	7 in	7 in	7 in	7 in
SLEEVE PANEL WIDTH 1" BELOW ARMHOLE	anCNbG		true	Full	0 in	4 1/4 in	4 1/2 in	4 1/2 in	4 1/2 in	4 3/4 in
SLEEVE PANEL WIDTH AT RIB JOIN - EXTENDED	GltsPe		true	Full	0 in	2 1/2 in	2 3/4 in	2 3/4 in	2 3/4 in	3 in
W/L SLEEVE ARTWORK FROM SLV RIB JOIN	WV		false	Full	1/8 in	1 1/4 in	1 1/4 in	1 1/4 in	1 1/4 in	1 1/4 in
W/L SLEEVE ARTWORK FROM PANEL SEAM	MOxMRk		true	Full	0 in	3 1/2 in	3 1/2 in	3 1/2 in	3 1/2 in	3 1/2 in

DEVELOPMENT 1ST PROTO REQ - Kay Whittle

CREATED ON SEP 29, 2025 8:38 PM

FW26CS011 CROPPED CROSS KNIT CREW SWEATSHIRT

Date: 9/29/25

Status: Requesting 1st Proto

TD: Kay

Development Notes:


- Create a pattern based on the measurements and sketch provided.

làm rập dựa trên thông số và sketch

**FW26CS011 - CROPPED CROSSKNIT CREW - REFERENCE**



FW26CS011-CROSSKNITCREW-REF-0.jpg

COMPONENT		QTY	1. NO COLOR ASSIGNED
FABRIC			
1	CHAINTEX, BBP09612-00 CODE: SGSU8 Placement: BODY, SLEEVES		- CHAINTEX, BBP09612-00 Price: 0.00
2	1X1 COTTON RIB - MATCH TO BODY CODE: YPT1i Placement: COLLAR, HEM, CUFFS, SIDE PANELS, UNDER SLEEVE PANELS		- 1X1 COTTON RIB - MATCH TO BODY Price: 0.00
TRIM			
3	ARTWORK CODE: AS CORRESPONDING FILE Placement: APPLIED AT WEARER'S LEFT CUFF Notes: FOLLOW ARTWORK FILE AND POM Supplier: Factory Sourced		- ARTWORK Price: 0.00
LABELS & PACKAGING			
4	ALD Woven Loop Label CODE: ALD-ML02 Placement: FOLLOW LABEL + PACKAGING GUIDE Supplier: Colonial	1	-  Parmesan Base / Gold Text Price: 0.00
5	ALD Woven Main Label W/ Size CODE: ALD-ML03 Placement: FOLLOW LABEL + PACKAGING GUIDE Supplier: Colonial Country of Origin: CHINA	1 Piece	- ALD Woven Main Label W/ Size Price: 0.079
Components 5			Total 0.079