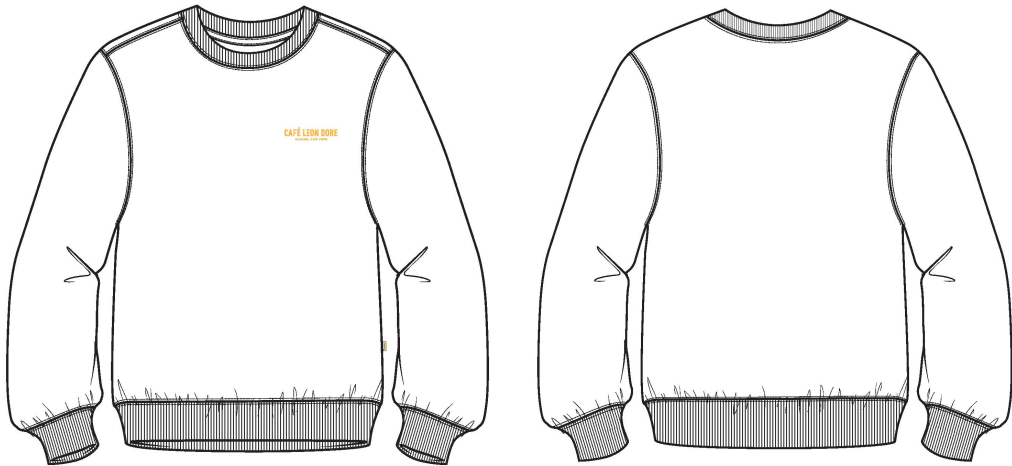


Cafe Crewneck

Name	Cafe Crewneck
Style No.	CA25CS000
Division	Mens
Category	Sweatshirts
Season	Spring/Summer
Year	2025
Size Scale	<div>M</div> -Sample size <div><div>XS</div><div>S</div><div>M</div><div>L</div><div>XL</div><div>XXL</div></div>
Style Status	Development
Factory	UN-AVAILABLE
Designer Name	Lonz
TD Name	Anastasiya
Created by/Author	12/18/2024 Anastasiya Zolotova anastasiya.zolotova@aimeleondore.com



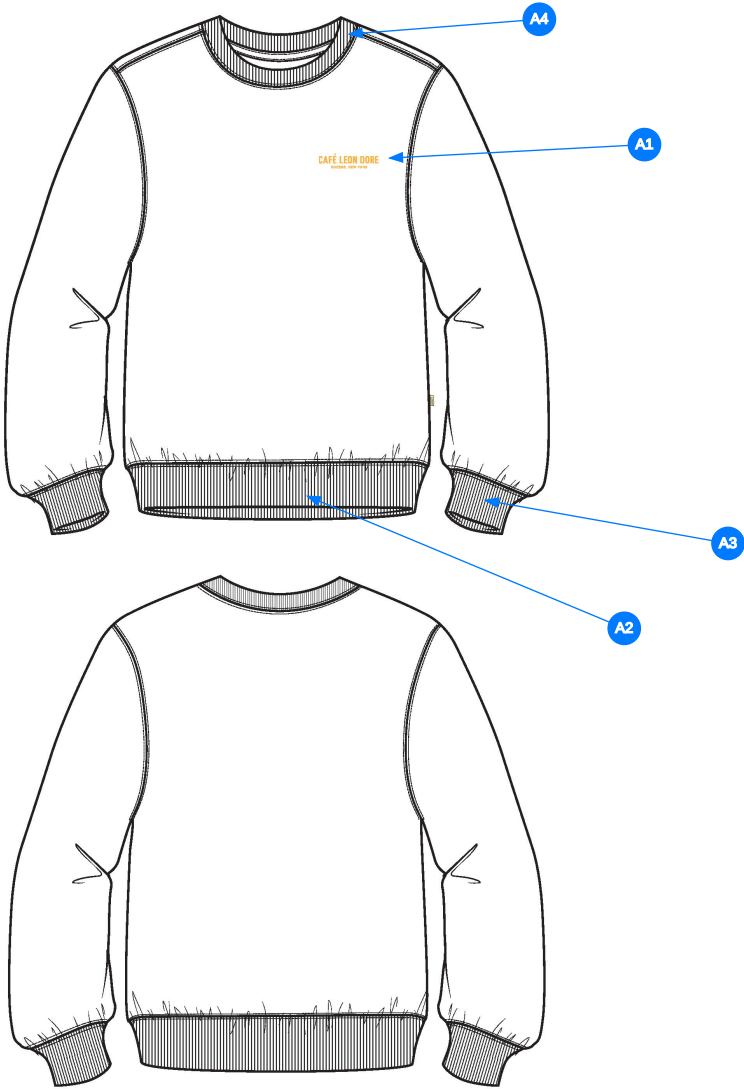
1\_B+W



BOTANICAL GREEN  
- 2x1 RIB: DTM

2\_CLR

CONSTRUCTION DETAILS

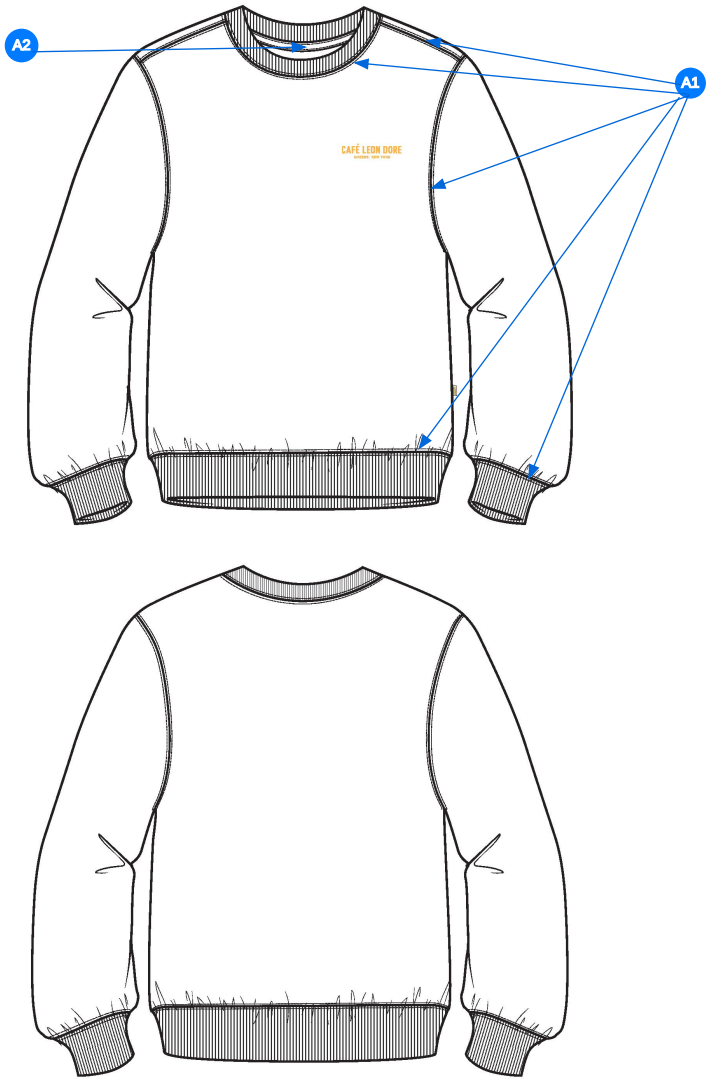


Comments (4)

- A1 PRINTED ARTWORK @ WL CHEST
- A2 2X2 RIB @ BOTTOM OPENING
- A3 2X2 RIB @ CUFF
- A4 2X2 RIB @ COLLAR

3\_CONSTRUCTION DETAILS

- Comments (2)
- A1 DOUBLE NEEDLE STRADDLE STITCHING @ SHOULDERS, ARMHOLE, CUFF, BOTTOM HEM, NECK
  - A2 JERSEY TAPE @ BACK NECK



4\_STITCHING DETAILS

Measured Size: M

POINT OF MEASURE	HOW TO MEASURE	CRITICAL	TYPE	TOLERANCE	EXPECTED	1ST FIT - RCVD	VARIANCE	ADJUST BY +/-	REVISED SPEC	MEASUREMENT NOTES
Front Body Length	HPS to bottom edge	true	Full	1/4 in	27 in	27 in	0 in	0 in	27 in	
Back Body Length	CB neck seam to bottom edge	true	Full	1/4 in	25 3/4 in	26 in	1/4 in	0 in	25 3/4 in	
Shoulder Seam Forward	HPS to seam	false	Full	1/8 in	1/2 in	1/2 in	0 in	0 in	1/2 in	
Shoulder Slope	Shoulder point perpendicular to HPS	false	Full	1/4 in	2 in	1 7/8 in	-1/8 in	0 in	2 in	
Front Neck Drop	HPS to neck seam	false	Full	1/8 in	4 in	4 1/8 in	1/8 in	0 in	4 in	
Back Neck Drop	HPS to neck seam	false	Full	1/8 in	1 1/4 in	1 in	-1/4 in	0 in	1 1/4 in	Back to Spec
Back Neck Width	Seam to seam at back neck, at HPS point	false	Full	1/4 in	7 3/4 in	7 1/2 in	-1/4 in	0 in	7 3/4 in	
Neck Trim Height	Neck Seam to trim edge	false	Full	1/8 in	13/16 in	15/16 in	1/8 in	0 in	13/16 in	
Minimum Neck Stretch		true	Half	0 in	11 1/2 in	11 1/2 in	0 in	0 in	11 1/2 in	
Across Shoulder	Seam to seam	false	Half	1/4 in	20 1/2 in	20 3/4 in	1/4 in	0 in	20 1/2 in	
Across Front	7" dwn from HPS, Seam to seam	false	Half	1/4 in	19 in	19 1/2 in	1/2 in	0 in	19 in	Back to Spec
Across Back	7" dwn from HPS, Seam to Seam	false	Half	1/4 in	19 1/2 in	19 7/8 in	3/8 in	0 in	19 1/2 in	Back to Spec
Chest Width	1" Below armhole- edge to edge	true	Half	1/4 in	22 3/4 in	23 in	1/4 in	0 in	22 3/4 in	
Bottom Opening 2" Above Rib Knit Seam		true	Half	1/4 in	21 3/4 in	21 1/2 in	-1/4 in	0 in	21 3/4 in	
Bottom Opening Width- At Seam	Straight with seam relaxed	true	Half	1/2 in	20 1/4 in	19 3/4 in	-1/2 in	0 in	20 1/4 in	
Bottom Opening Width- At Edge	At bottom edge	true	Half	1/4 in	17 in	17 1/2 in	1/2 in	0 in	17 in	Back to Spec
Bottom Hem Height	Bottom edge to stitch line or trim seam	false	Full	1/8 in	2 3/4 in	2 7/8 in	1/8 in	0 in	2 3/4 in	
Sleeve Length from CB Neck	3-point measure from CB Neck to shoulder point to sleeve edge	true	Full	1/2 in	35 in	34 7/8 in	-1/8 in	0 in	35 in	
Armhole Drop	Below HPS - measure perpendicular	false	Full	1/4 in	12 1/2 in	12 1/2 in	0 in	0 in	12 1/2 in	
Bicep Width	1" below armhole- edge to edge	false	Half	1/4 in	9 1/2 in	9 1/2 in	0 in	0 in	9 1/2 in	
Forearm Width	9" up from sleeve cuff edge	false	Half	1/4 in	7 1/4 in	7 in	-1/4 in	0 in	7 1/4 in	
Sleeve Opening Width 1" Above Rib Knit Seam		true	Half	1/4 in	5 3/8 in	5 1/4 in	-1/8 in	0 in	5 3/8 in	
Sleeve Opening Width- At Seam	Width at Seam	false	Half	1/4 in	4 3/4 in	4 3/4 in	0 in	0 in	4 3/4 in	
Sleeve Opening Width- At Edge	At edge	false	Half	1/4 in	3 3/4 in	3 3/4 in	0 in	0 in	3 3/4 in	
Sleeve Cuff Height	Cuff edge to seam	false	Full	1/8 in	2 3/4 in	3 in	1/4 in	0 in	2 3/4 in	Back to Spec
WL Chest Artwork Placement from HPS to Top Edge		true	Full	1/8 in	7 3/4 in	7 1/2 in	-1/4 in	0 in	7 3/4 in	Back to Spec
WL Chest Artwork Placement Out from CF Line		false	Full	1/8 in	2 1/4 in	2 in	-1/4 in	0 in	2 1/4 in	Back to Spec
Loop Label Placement at Sideseam	Bottom edge to bottom of loop label, at the WL side seam	false	Full	1/8 in	7 in	0 in	0 in	0 in	7 in	

1st Proto - Anastasiya Zolotova

CREATED ON DEC 19, 2024 1:09 AM  
1ST FIT: SIZE:M, CREATED AT: 12-16-2024

CA25CS000 Cafe Crewneck  
**FITTING DATE:** 12/17/24  
**MODEL/ATTENDEES:** Anastasiya  
**STATUS:** 1st Fit Approved to PPS

Fit Comments:

1. Back neck drop came in -1/4", go back to spec.

2. Across front came in +1/2", go back to spec.

3. Across back came in +3/8", go back to spec.

4. Bottom opening at edge came in +1/2",go back to spec.

5. Sleeve cuff height came in +1/4", go back to spec.

6. WL chest artwork placement from HPS came in -1/4", go back to spec.

7. WL chest artwork placement from CF came in -1/4", go back to spec.
1. Hạ cổ sau -1/4", đưa trở lại thông số kỹ thuật

2. Ngang ngực trước +1/2", đưa trở lại thông số kỹ thuật

3. Ngang ngực sau +3/8", đưa trở lại thông số kỹ thuật

4. Rộng lai tại mép +1/2", đưa trở lại thông số kỹ thuật

5. Cao bo lai tay +1/4", đưa trở lại thông số kỹ thuật

6. Hình in tại thân trước trái từ đỉnh vai -1/4", đưa trở lại thông số kỹ thuật

7. Hình in tại thân trước trái từ giữa trước -1/4", đưa trở lại thông số kỹ thuật



Screen Shot 2024-12-18 at 8.05.27 PM.jpg