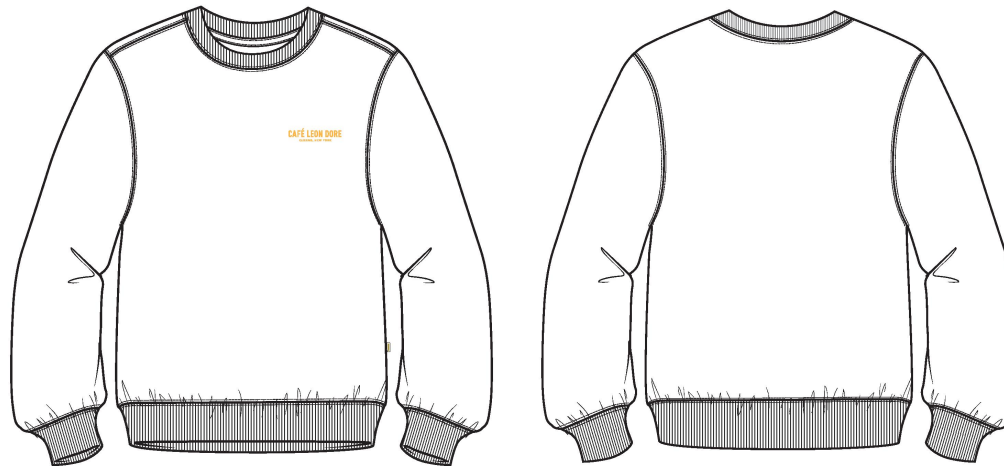


Name	Cafe Crewneck
Style No.	CA25CS000
Division	Mens
Category	Sweatshirts
Season	Spring/Summer
Year	2025
Size Scale	<div>M</div> -Sample size
	<div>XS</div> <div>S</div> <div>M</div> <div>L</div> <div>XL</div> <div>XXL</div>
Style Status	Development
Factory	UN-AVAILABLE
Designer Name	Lonz
TD Name	Anastasiya
Created by/Author	9/6/2024 Jeni Fitzgerald jeni.fitzgerald@aimeleondore.com

Cafe Crewneck



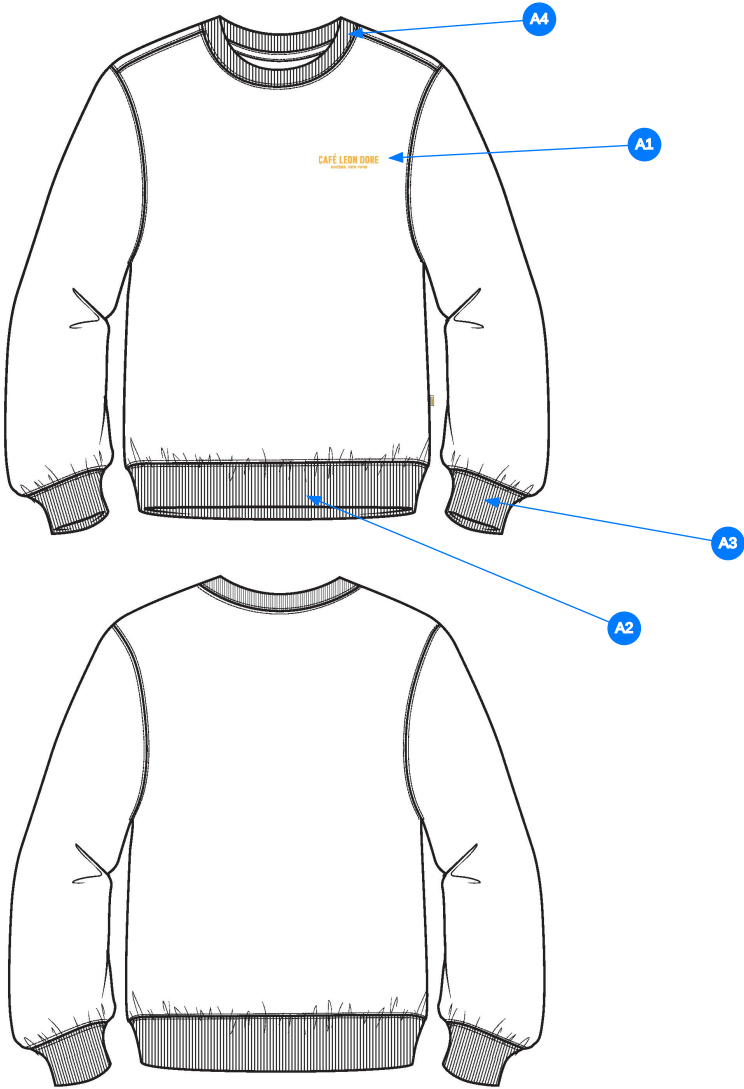
1\_B+W



BOTANICAL GREEN  
- 2x1 RIB: DTM

2\_CLR

CONSTRUCTION DETAILS

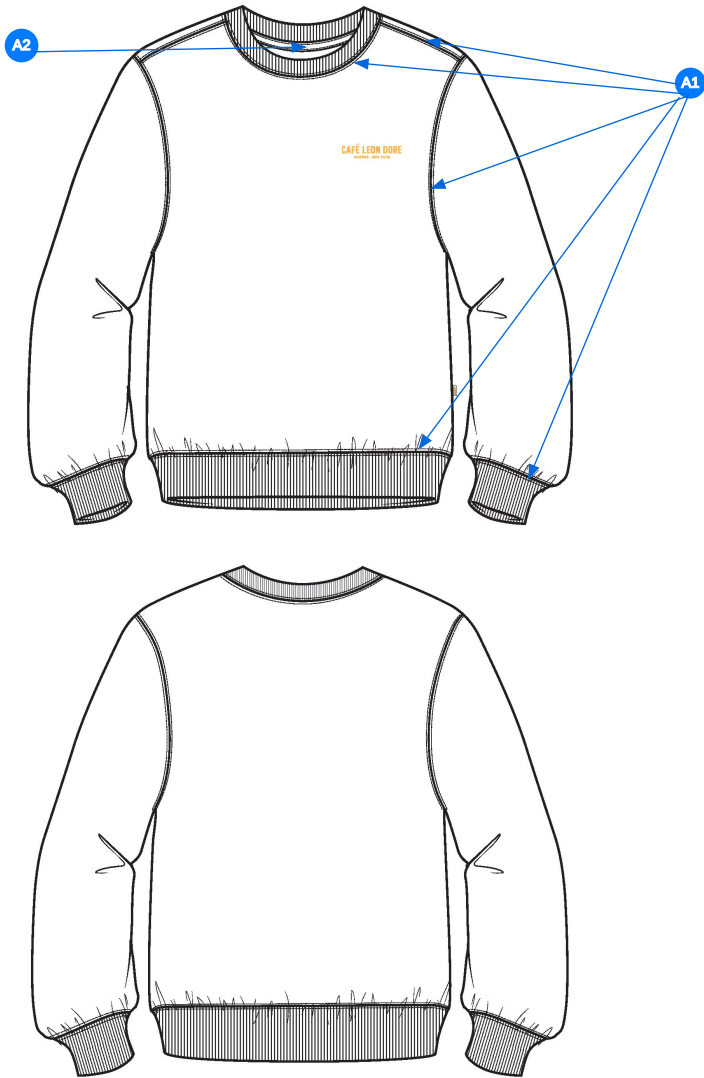


Comments (4)

- A1 PRINTED ARTWORK @ WL CHEST
- A2 2X2 RIB @ BOTTOM OPENING
- A3 2X2 RIB @ CUFF
- A4 2X2 RIB @ COLLAR

- 1. HÌNH IN TẠI NGỰC TRÁI
- 2. RIB 2X2 TẠI LẠI ÁO
- 3. RIB 2X2 TẠI LẠI TAY
- 4. RIB 2X2 LẠI BƠ CỎ

3\_CONSTRUCTION DETAILS



Comments (2)

- A1** DOUBLE NEEDLE STRADDLE STITCHING @ SHOULDERS, ARMHOLE, CUFF, BOTTOM HEM - SINGLE NEEDLE TOPSTITCH @ FRONT NECK
- A2** JERSEY TAPE @ BACK NECK

- 1. ĐIỀU RẼ 2 KIM TẠI VAI, NÁCH, LAI TAY, LAI ÁO - ĐIỀU 1 KIM TẠI CỔ TRƯỚC
- 2. DÂY TAOE VIỀN CỔ SAU.

4\_STITCHING DETAILS

ARTWORK DETAILS

- ARTWORK IS NOT SHOWN TO ACTUAL SIZE
- SEE SEPARATE FILE FOR ACTUAL SIZE ARTWORK
- ARTWORK IS **PRINTED**



BOTANICAL GREEN COLORWAY



PRINT COLOR:  PMS 1375 C

5\_ARTWORK DETAILS



ACTUAL SIZE ARTWORK

Sample Size: M

POINT OF MEASURE	CODE	HOW TO MEASURE	CRITICAL	TYPE	TOLERANCE	M
Front Body Length	S&K01	HPS to bottom edge	true	Full	1/4 in	27 in
Back Body Length	S&K02	CB neck seam to bottom edge	true	Full	1/4 in	25 3/4 in
Shoulder Seam Forward	S&K07	HPS to seam	false	Full	1/8 in	1/2 in
Shoulder Slope	S&K08	Shoulder point perpendicular to HPS	false	Full	1/4 in	1 3/4 in
Front Neck Drop	S&K04	HPS to neck seam	false	Full	1/8 in	4 in
Back Neck Drop	S&K05	HPS to neck seam	false	Full	1/8 in	1 1/4 in
Back Neck Width	S&K06	Seam to seam at back neck, at HPS point	false	Full	1/4 in	7 3/4 in
Neck Trim Height	S&K020	Neck Seam to trim edge	false	Full	1/8 in	7/8 in
Minimum Neck Stretch	S&K199		true	Half	0 in	11 1/2 in
Across Shoulder	S&K09	Seam to seam	false	Half	1/4 in	18 1/2 in
Across Front	S&K010	7" dwn from HPS, Seam to seam	false	Half	1/4 in	17 1/4 in
Across Back	S&K011	7" dwn from HPS, Seam to Seam	false	Half	1/4 in	17 3/4 in
Chest Width	S&K012	1" Below armhole- edge to edge	true	Half	1/4 in	22 3/4 in
Bottom Opening 2" Above Rib Knit Seam	S&K		true	Half	1/4 in	21 3/4 in
Bottom Opening Width- At Edge	S&K013	At bottom edge	true	Half	1/4 in	17 in
Bottom Hem Height	S&K014	Bottom edge to stitch line or trim seam	false	Full	1/8 in	2 3/4 in
Sleeve Length from CB Neck	S&K032	3-point measure from CB Neck to shoulder point to sleeve edge	true	Full	1/2 in	35 in
Armhole Drop	S&K016	Below HPS - measure perpendicular	false	Full	1/4 in	12 1/2 in
Bicep Width	S&K017	1" below armhole- edge to edge	false	Half	1/4 in	9 in
Forearm Width	S&K033	9" up from sleeve cuff edge	false	Half	1/4 in	7 1/8 in
Sleeve Opening Width 1" Above Rib Knit Seam	S&K		true	Half	1/4 in	5 3/8 in
Sleeve Opening Width- At Edge	S&K73	At edge	false	Half	1/4 in	3 3/4 in
Sleeve Cuff Height	S&K36	Cuff edge to seam	false	Full	1/8 in	2 3/4 in
WL Chest Artwork Placement from HPS to Top Edge	S&K103		true	Full	1/8 in	7 3/4 in
WL Chest Artwork Placement Out from CF Line	S&K252		false	Full	1/8 in	2 1/4 in







Development Notes - Anastasiya Zolotova

CREATED ON SEP 6, 2024 9:36 PM

CA25CS000 Cafe Crewneck  
Date: 9/6/24  
Status: Direct to PPS  
TD: Anastasiya

Fit: Follow FW24CS000 Crest Crewneck w/updated artwork.

FIT THAM KHẢO FW24CS000 VỚI HÌNH IN MỚI

COMPONENT		QTY	1.  BOTANICAL GARDEN CODE: 19-5220 TCX
FABRIC			
1	<b>UA Loop Back Heavy Fleece</b> CODE: C2300234 French Terry Placement: BODY Supplier: UNAVAILABLE Weight: 560gsm		-  Botanical Garden Custom Code: 19-5220 TCX  Price: 0.00
2	<b>UA 2x2 Terry Rib</b> CODE: C2300246 Placement: CUFFS, HEM Supplier: UNAVAILABLE		-  Botanical Garden Custom Code: 19-5220 TCX  Price: 0.00
3	<b>UA Herringbone Tape</b> CODE: ALTAPE1 Placement: STRADDLED OVER BACK NECK SEAM F/ SH TO SH Supplier: UNAVAILABLE		-  Botanical Garden Custom Code: 19-5220 TCX Width: 3/8" Price: 0.00
4	<b>ARTWORK</b> CODE: SCREENPRINT Placement: WL CHEST Notes: 2.5" LOGO, FOLLOW ARTWORK AND POM Supplier: Factory Sourced		- ARTWORK  Price: 0.00
LABEL AND TRIM PACKAGE			
5	<b>ALD Woven Main Label W/ Size</b> CODE: ALD-ML03 Placement: INTERIOR CENTER BACK NECK Supplier: Colonial Country of Origin: CHINA	1 Piece	- ALD Woven Main Label W/ Size  Price: 0.079
6	<b>ALD Hangtag</b> CODE: ALD-T06P Placement: WEARER'S LEFT ARMHOLE ABOVE SIDE SEAM Supplier: Colonial Country of Origin: CHINA	1 Piece	- ALD Hangtag  Price: 0.22
7	<b>ALD Branded Polybag - 15" X 18" (RECYCLED)</b> CODE: ALD-PB02-R Supplier: Colonial Country of Origin: CHINA	1 Piece	- ALD Branded Polybag - 15" x 18" (RECYCLED)  Price: 0.29
8	<b>ALD Woven Care + Content + COO Label</b> CODE: ALD-COO-XXX Placement: INTERIOR WEARER'S LEFT SIDE SEAM, 5" ABOVE BODY HEM Supplier: Colonial Country of Origin: CHINA	1 Piece	- ALD Woven Care + Content + COO Label  Price: 0.058
9	<b>UPC Sticker</b> CODE: UPC Placement: POLY BAG; BACK SIDE, UPPER RIGHT HAND CORNER Supplier: Factory Sourced	1	- UPC Sticker  Price: 0.00
Components 9			Total 0.647

**C25CS000****THÔNG SỐ PPS**

No	POINT OF MEASURE	DỊCH	CODE	HOW TO MEASURE	DỊCH	CRITICAL	TYPE	TOLERANCE	M
1	Front Body Length	DÀI ÁO THÂN TRƯỚC	S&K01	HPS to bottom edge	TỪ ĐỈNH VAI ĐẾN MÉP LẠI	true	Full	1/4 in	27 in
2	Back Body Length	DÀI ÁO THÂN SAU	S&K02	CB neck seam to bottom edge	GIỮA CỎ SAU ĐẾN MÉP LẠI	true	Full	1/4 in	25 3/4 in
3	Shoulder Seam Forward	CHÒM VAI	S&K07	HPS to seam	ĐỈNH VAI ĐẾN ĐƯỜNG MAY	false	Full	1/8 in	1/2 in
4	Shoulder Slope	XUÔI VAI	S&K08	Shoulder point perpendicular to HPS	ĐO TỪ NGANG VAI ĐẾN ĐIỂM NGANG ĐẦU VAI	false	Full	1/4 in	1 3/4 in
5	Front Neck Drop	HẠ CỎ TRƯỚC	S&K04	HPS to neck seam	TỪ ĐỈNH VAI ĐẾN ĐƯỜNG MAY CỎ	false	Full	1/8 in	4 in
6	Back Neck Drop	HẠ CỎ SAU	S&K05	HPS to neck seam	TỪ ĐỈNH VAI ĐẾN ĐƯỜNG MAY CỎ	false	Full	1/8 in	1 1/4 in
7	Back Neck Width	NGANG CỎ SAU	S&K06	Seam to seam at back neck, at HPS point	TỪ ĐƯỜNG MAY ĐẾN ĐƯỜNG MAY TẠI CỎ SAU	false	Full	1/4 in	7 3/4 in
8	Neck Trim Height	TO BÀN BỎ CỎ	S&K020	Neck Seam to trim edge	TỪ ĐƯỜNG TRÁ CỎ ĐẾN MÉP BỎ	false	Full	1/8 in	7/8 in
9	Minimum Neck Stretch	RỘNG CỎ ĐO CĂNG TỐI THIỂU	S&K199			true	Half	0 in	11 1/2 in
10	Across Shoulder	NGANG VAI	S&K09	Seam to seam	TỪ ĐƯỜNG MAY ĐẾN ĐƯỜNG MAY	false	Half	1/4 in	18 1/2 in
11	Across Front	NGANG NGỰC	S&K010	7" dwn from HPS, Seam to seam	HẠ 7" TỪ CAO VAI, ĐO TỪ ĐƯỜNG MAY ĐẾN ĐƯỜNG MAY	false	Half	1/4 in	17 1/4 in
12	Across Back	NGANG LƯNG	S&K011	7" dwn from HPS, Seam to Seam	HẠ 7" TỪ CAO VAI, ĐO TỪ ĐƯỜNG MAY ĐẾN ĐƯỜNG MAY	false	Half	1/4 in	17 3/4 in
13	Chest Width	RỘNG NGỰC	S&K012	1" Below armhole- edge to edge	HẠ 1" DƯỚI NGÃ TƯ NÁCH, ĐO TỪ MÉP ĐẾN MÉP	true	Half	1/4 in	22 3/4 in
14	Bottom Opening 2" Above Rib Knit Seam	NGANG LẠI ÁO - 2" TRÊN ĐƯỜNG MAY RIB	S&K			true	Half	1/4 in	21 3/4 in
15	Bottom Opening Width- At Edge	LẠI ÁO ĐO MÉP DƯỚI	S&K013	At bottom edge	TẠI MÉP LẠI	true	Half	1/4 in	17 in
16	Bottom Hem Height	TO BÀN LẠI ÁO	S&K014	Bottom edge to stitch line or trim seam	TỪ MÉP ĐẾN ĐƯỜNG ĐIỀU	false	Full	1/8 in	2 3/4 in
17	Sleeve Length from CB Neck	DÀI TAY TỪ GIỮA CỎ SAU	S&K032	3-point measure from CB Neck to shoulder point to sleeve edge	ĐO 3 ĐIỂM TỪ GIỮA CỎ SAU ĐẾN ĐIỂM VAI ĐẾN MÉP TAY	true	Full	1/2 in	35 in
18	Armhole Drop	HẠ NÁCH	S&K016	Below HPS - measure perpendicular	HẠ TỪ CAO VAI ĐẾN ĐIỂM NÁCH NGÃ TƯ NÁCH	false	Full	1/4 in	12 1/2 in
19	Bicep Width	NGANG BẮP TAY	S&K017	1" below armhole- edge to edge	HẠ 1" DƯỚI NGÃ TƯ NÁCH, ĐO TỪ MÉP ĐẾN MÉP	false	Half	1/4 in	9 in

20	Forearm Width	<b>CÁNG TAY</b>	S&K033	9" up from sleeve cuff edge	<b>9" TỪ MÉP LAI TAY</b>	false	Half	1/4 in	<b>7 1/8 in</b>
21	Sleeve Opening Width 1" Above Rib Knit Seam	<b>CỬA TAY :1" LÊN TỪ ĐƯỜNG MAY RIB</b>	S&K			true	Half	1/4 in	<b>5 3/8 in</b>
22	Sleeve Opening Width- At Edge	<b>CỬA TAY - TẠI MÉP</b>	S&K73	At edge	<b>TẠI MÉP LAI</b>	false	Half	1/4 in	<b>3 3/4 in</b>
23	Sleeve Cuff Height	<b>TO BÀN LAI TAY</b>	S&K36	Cuff edge to seam	<b>MÉP LAI ĐẾN ĐƯỜNG MAY</b>	false	Full	1/8 in	<b>2 3/4 in</b>
24	WL Chest Artwork Placement from HPS to Top Edge	<b>ĐỊNH VỊ HÌNH IN THÂN TRƯỚC TỪ ĐỈNH VAI ĐẾN ĐỈNH HÌNH IN</b>	S&K103			true	Full	1/8 in	<b>7 3/4 in</b>
25	WL Chest Artwork Placement Out from CF Line	<b>ĐỊNH VỊ HÌNH IN THÂN TRƯỚC TỪ GIỮA TRƯỚC</b>	S&K252			false	Full	1/8 in	<b>2 1/4 in</b>