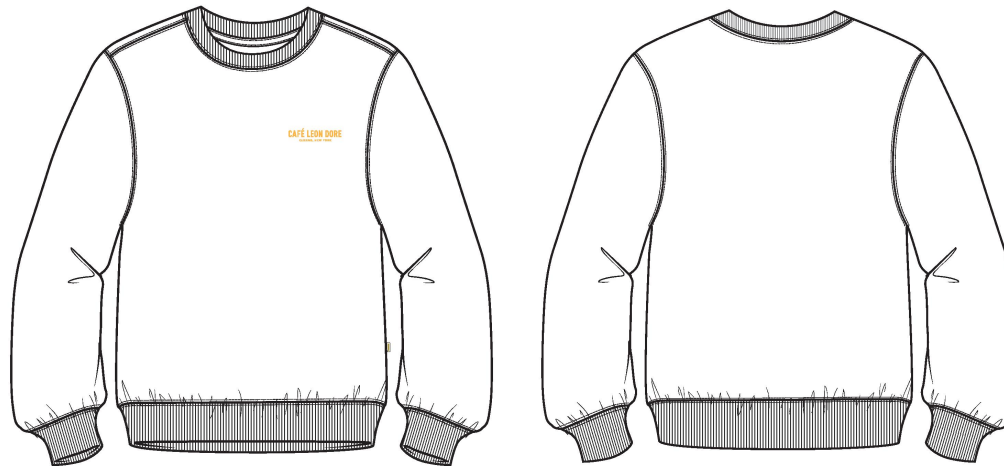


Name	Cafe Crewneck
Style No.	CA25CS000
Division	Mens
Category	Sweatshirts
Season	Spring/Summer
Year	2025
Size Scale	<div>M</div> -Sample size <div><div>XS</div><div>S</div><div>M</div><div>L</div><div>XL</div><div>XXL</div></div>
Style Status	Development
Factory	UN-AVAILABLE
Designer Name	Lonz
TD Name	Anastasiya
Created by/Author	9/6/2024 Jeni Fitzgerald jeni.fitzgerald@aimeleondore.com

Cafe Crewneck



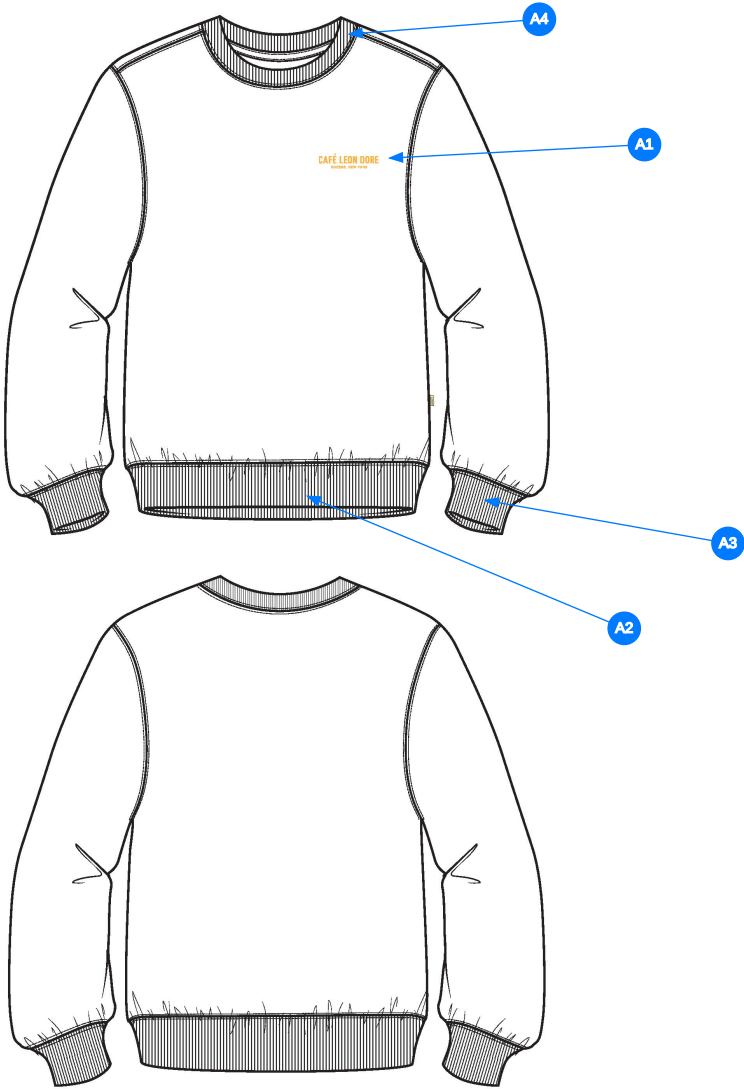
1_B+W



BOTANICAL GREEN
- 2x1 RIB: DTM

2_CLR

CONSTRUCTION DETAILS

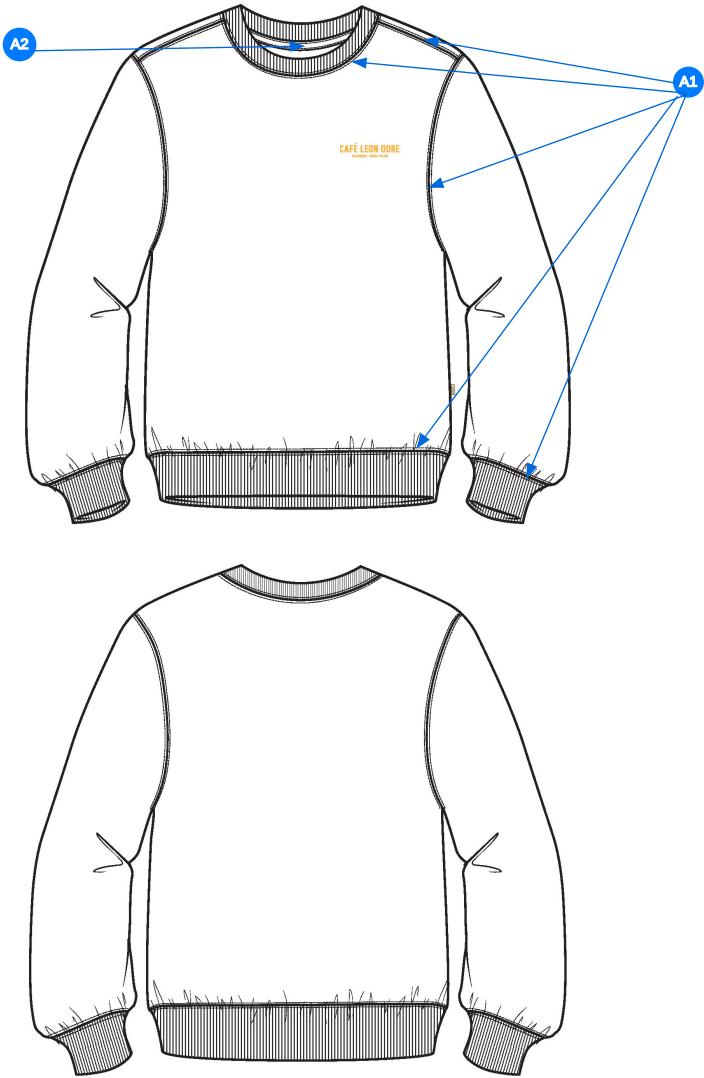


Comments (4)

- A1 PRINTED ARTWORK @ WL CHEST
- A2 2X2 RIB @ BOTTOM OPENING
- A3 2X2 RIB @ CUFF
- A4 2X2 RIB @ COLLAR

3_CONSTRUCTION DETAILS

- Comments (2)
- A1 DOUBLE NEEDLE STRADDLE STITCHING @ SHOULDERS, ARMHOLE, CUFF, BOTTOM HEM - SINGLE NEEDLE TOPSTITCH @ FRONT NECK
 - A2 JERSEY TAPE @ BACK NECK



4_STITCHING DETAILS

ARTWORK DETAILS

- ARTWORK IS NOT SHOWN TO ACTUAL SIZE
- SEE SEPARATE FILE FOR ACTUAL SIZE ARTWORK
- ARTWORK IS **PRINTED**



BOTANICAL GREEN COLORWAY



PRINT COLOR:  PMS 1375 C

5_ARTWORK DETAILS



ACTUAL SIZE ARTWORK

Sample Size: M





POINT OF MEASURE	CODE	HOW TO MEASURE	CRITICAL	TYPE	TOLERANCE	M
Front Body Length	S&K01	HPS to bottom edge	true	Full	1/4 in	27 in
Back Body Length	S&K02	CB neck seam to bottom edge	true	Full	1/4 in	25 3/4 in
Shoulder Seam Forward	S&K07	HPS to seam	false	Full	1/8 in	1/2 in
Shoulder Slope	S&K08	Shoulder point perpendicular to HPS	false	Full	1/4 in	1 3/4 in
Front Neck Drop	S&K04	HPS to neck seam	false	Full	1/8 in	4 in
Back Neck Drop	S&K05	HPS to neck seam	false	Full	1/8 in	1 1/4 in
Back Neck Width	S&K06	Seam to seam at back neck, at HPS point	false	Full	1/4 in	7 3/4 in
Neck Trim Height	S&K020	Neck Seam to trim edge	false	Full	1/8 in	7/8 in
Minimum Neck Stretch	S&K199		true	Half	0 in	11 1/2 in
Across Shoulder	S&K09	Seam to seam	false	Half	1/4 in	18 1/2 in
Across Front	S&K010	7" dwn from HPS, Seam to seam	false	Half	1/4 in	17 1/4 in
Across Back	S&K011	7" dwn from HPS, Seam to Seam	false	Half	1/4 in	17 3/4 in
Chest Width	S&K012	1" Below armhole- edge to edge	true	Half	1/4 in	22 3/4 in
Bottom Opening 2" Above Rib Knit Seam	S&K		true	Half	1/4 in	21 3/4 in
Bottom Opening Width- At Edge	S&K013	At bottom edge	true	Half	1/4 in	17 in
Bottom Hem Height	S&K014	Bottom edge to stitch line or trim seam	false	Full	1/8 in	2 3/4 in
Sleeve Length from CB Neck	S&K032	3-point measure from CB Neck to shoulder point to sleeve edge	true	Full	1/2 in	35 in
Armhole Drop	S&K016	Below HPS - measure perpendicular	false	Full	1/4 in	12 1/2 in
Bicep Width	S&K017	1" below armhole- edge to edge	false	Half	1/4 in	9 in
Forearm Width	S&K033	9" up from sleeve cuff edge	false	Half	1/4 in	7 1/8 in
Sleeve Opening Width 1" Above Rib Knit Seam	S&K		true	Half	1/4 in	5 3/8 in
Sleeve Opening Width- At Edge	S&K73	At edge	false	Half	1/4 in	3 3/4 in
Sleeve Cuff Height	S&K36	Cuff edge to seam	false	Full	1/8 in	2 3/4 in
WL Chest Artwork Placement from HPS to Top Edge	S&K103		true	Full	1/8 in	7 3/4 in
WL Chest Artwork Placement Out from CF Line	S&K252		false	Full	1/8 in	2 1/4 in

Development Notes - Anastasiya Zolotova

CREATED ON SEP 6, 2024 9:36 PM

CA25CS000 Cafe Crewneck
Date: 9/6/24
Status: Direct to PPS
TD: Anastasiya

Fit: Follow FW24CS000 Crest Crewneck w/updated artwork.

COMPONENT		QTY	1.  BOTANICAL GARDEN CODE: 19-5220 TCX
FABRIC			
1	UA Loop Back Heavy Fleece CODE: C2300234 French Terry Placement: BODY Supplier: UNAVAILABLE Weight: 560gsm		-  Botanical Garden Custom Code: 19-5220 TCX Price: 0.00
2	UA 2x2 Terry Rib CODE: C2300246 Placement: CUFFS, HEM Supplier: UNAVAILABLE		-  Botanical Garden Custom Code: 19-5220 TCX Price: 0.00
3	UA Herringbone Tape CODE: ALTAPE1 Placement: STRADDLED OVER BACK NECK SEAM F/ SH TO SH Supplier: UNAVAILABLE		-  Botanical Garden Custom Code: 19-5220 TCX Width: 3/8" Price: 0.00
4	ARTWORK CODE: SCREENPRINT Placement: WL CHEST Notes: 2.5" LOGO, FOLLOW ARTWORK AND POM Supplier: Factory Sourced		- ARTWORK Price: 0.00
LABEL AND TRIM PACKAGE			
5	ALD Woven Main Label W/ Size CODE: ALD-ML03 Placement: INTERIOR CENTER BACK NECK Supplier: Colonial Country of Origin: CHINA	1 Piece	- ALD Woven Main Label W/ Size Price: 0.079
6	ALD Hangtag CODE: ALD-T06P Placement: WEARER'S LEFT ARMHOLE ABOVE SIDE SEAM Supplier: Colonial Country of Origin: CHINA	1 Piece	- ALD Hangtag Price: 0.22
7	ALD Branded Polybag - 15" X 18" (RECYCLED) CODE: ALD-PB02-R Supplier: Colonial Country of Origin: CHINA	1 Piece	- ALD Branded Polybag - 15" x 18" (RECYCLED) Price: 0.29
8	ALD Woven Care + Content + COO Label CODE: ALD-COO-XXX Placement: INTERIOR WEARER'S LEFT SIDE SEAM, 5" ABOVE BODY HEM Supplier: Colonial Country of Origin: CHINA	1 Piece	- ALD Woven Care + Content + COO Label Price: 0.058
9	UPC Sticker CODE: UPC Placement: POLY BAG; BACK SIDE, UPPER RIGHT HAND CORNER Supplier: Factory Sourced	1	- UPC Sticker Price: 0.00
Components 9			Total 0.647