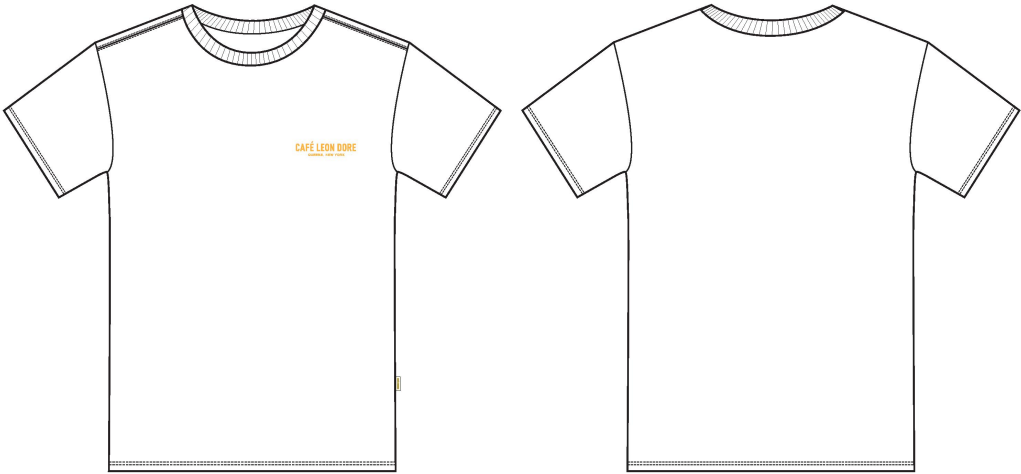


Cafe SS Tee

Name	Cafe SS Tee
Style No.	CA25CT000
Division	Mens
Category	Tees
Season	Spring/Summer
Year	2025
Size Scale	M -Sample size
	<div>XS S M L XL XXL</div>
Style Status	Development
Factory	UN-AVAILABLE
Designer Name	Lonz
TD Name	Anastasiya
Created by/Author	9/6/2024 Jeni Fitzgerald jeni.fitzgerald@aimeleondore.com



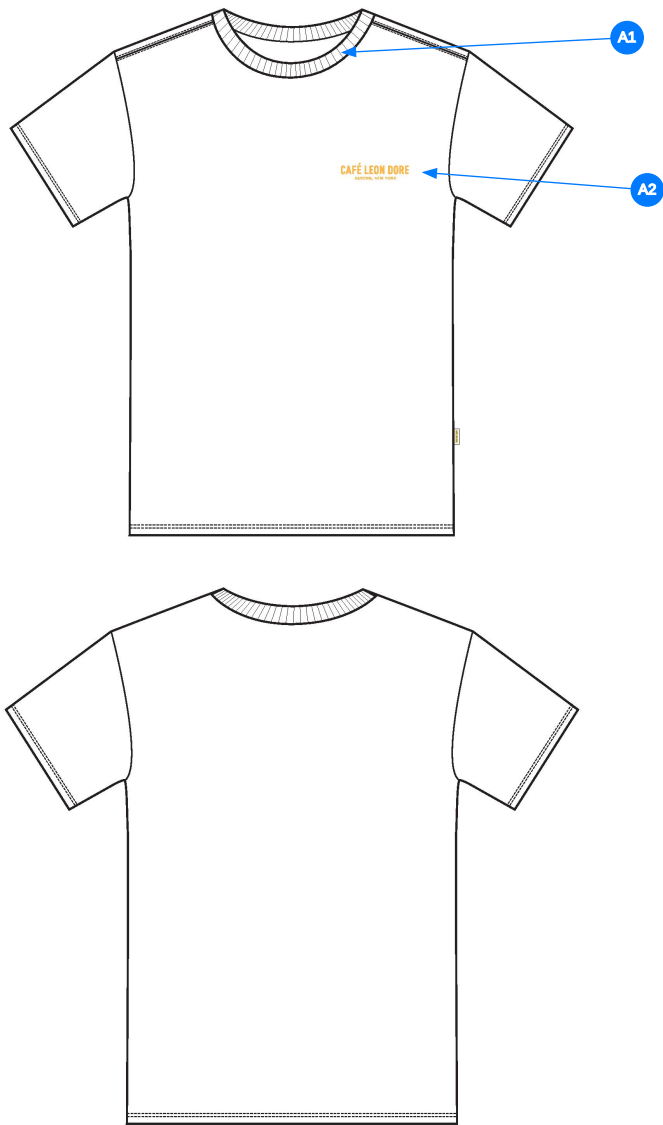
1_B+W



BOTANICAL GREEN
- 1x1 RIB: DTM

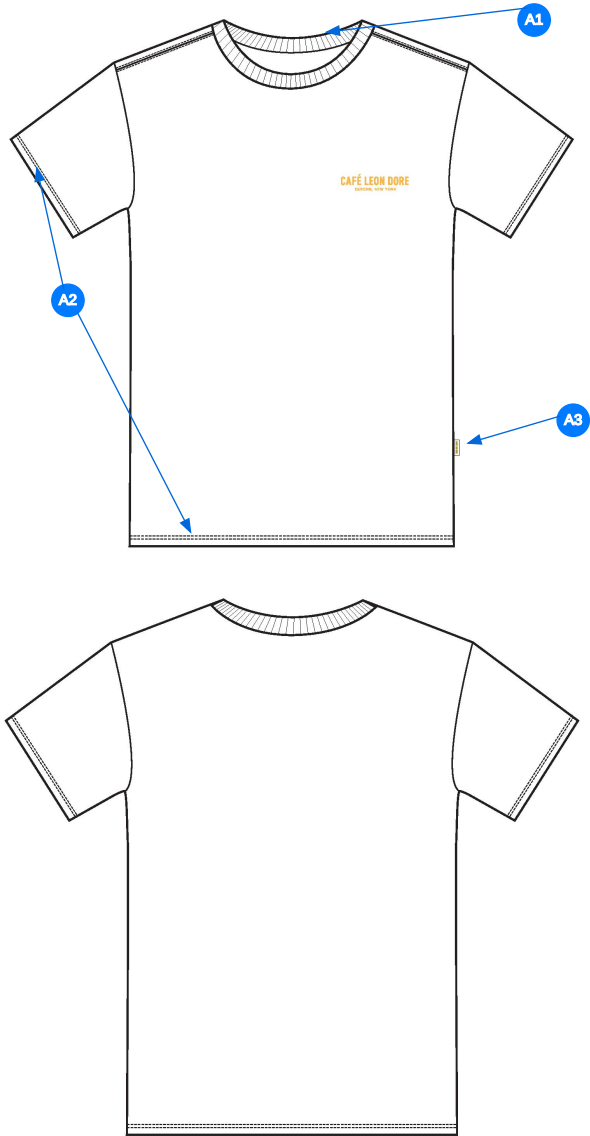
2_CLR

CONSTRUCTION DETAILS



- Comments (2)
- A1 1X1 RIB @ NECKLINE - JERSEY TAPE ALONG BACK NECK
 - A2 PRINTED ARTWORK @ WL CHEST

3_CONSTRUCTION DETAILS



Comments (3)

- A1** DN STRADDLE STITCH @ BACK NECK AND SHOULDER SEAMS
- A2** 1/8" DN COVERSTITCH @ CUFF AND BOTTOM OPENING
- A3** DISREGARD THE SKETCH--- THERE SHOULD BE NO LOOP LABEL @ THE WL SIDESEAM

4_STITCHING DETAILS

ARTWORK DETAILS

- ARTWORK IS NOT SHOWN TO ACTUAL SIZE
- SEE SEPARATE FILE FOR ACTUAL SIZE ARTWORK
- ARTWORK IS **PRINTED**



BOTANICAL GREEN COLORWAY



PRINT COLOR:  PMS 1375 C

5_ARTWORK DETAILS



ACTUAL SIZE ARTWORK

Sample Size: M




POINT OF MEASURE	CODE	HOW TO MEASURE	CRITICAL	TYPE	TOLERANCE	M
Front Body Length	S&K01	HPS to bottom edge	true	Full	1/2 in	28 in
Back Body Length	S&K02	CB neck seam to bottom edge	true	Full	1/2 in	27 1/4 in
Shoulder Seam Forward	S&K07	HPS to seam	false	Full	1/8 in	1/2 in
Shoulder Slope	S&K08	Shoulder point perpendicular to HPS	false	Full	1/4 in	2 in
Front Neck Drop	S&K04	HPS to neck seam	false	Full	1/8 in	4 in
Back Neck Drop	S&K05	HPS to neck seam	false	Full	1/8 in	3/4 in
Back Neck Width	S&K06	Seam to seam at back neck, at HPS point	false	Full	1/4 in	7 3/4 in
Minimum Neck Stretch	S&K199		true	Half	0 in	11 1/2 in
Neck Trim Height	S&K020	Neck Seam to trim edge	false	Full	1/8 in	7/8 in
Across Shoulder	S&K09	Seam to seam	false	Half	3/8 in	18 in
Across Front	S&K010	7" dwn from HPS, Seam to seam	false	Half	3/8 in	16 1/2 in
Across Back	S&K011	7" dwn from HPS, Seam to Seam	false	Half	3/8 in	16 3/4 in
Chest Width	S&K012	1" Below armhole- edge to edge	true	Half	1/2 in	21 in
Bottom Opening Width- At Edge	S&K013	At bottom edge	true	Half	1/2 in	21 in
Bottom Hem Height	S&K014	Bottom edge to stitch line or trim seam	false	Full	1/8 in	3/4 in
Sleeve Length from CB Neck - Short	S&K033	3-point measure from CB Neck to shoulder point to sleeve edge	true	Full	1/4 in	18 1/2 in
Armhole Drop	S&K016	Below HPS - measure perpendicular	false	Full	1/4 in	11 1/4 in
Sleeve Cap Height	S&K102		true	Full	1/8 in	5 3/4 in
Bicep Width	S&K017	1" below armhole- edge to edge	false	Half	1/4 in	8 in
Sleeve Opening Width- At Edge	S&K73	At edge	false	Half	1/4 in	7 1/4 in
Sleeve Hem Height	S&K118	Hem height	false	Full	1/8 in	3/4 in
WL Artwork Placement from HPS to Top Edge	S&K103		true	Full	1/8 in	8 in
Artwork Placement out from the CF Line	S&K022		false	Full	1/8 in	2 1/4 in

Development Notes - Anastasiya Zolotova

CREATED ON SEP 6, 2024 9:34 PM

CA25CT000 Cafe SS Tee
Date: 9/6/24
Status: Direct to PPS
TD: Anastasiya

Fit: Please follow FW24CT014 SS Micro Din Tee

COMPONENT		QTY	1.  BOTANICAL GARDEN CODE: 19-5220 TCX
FABRIC			
1	TT-SJ30SX2-W120 CODE: UA CORE JERSEY Placement: BODY / BACK NECK F/ AH TO AH Supplier: UNAVAILABLE Width: CW: 120CM Weight: 240 GSM Country of Origin: VIETNAM		-  Botanical Garden Custom Code: 19-5220 TCX Price: 3.90
2	TT-RIB20SX2 CODE: UA CORE 1x1 RIB Placement: COLLAR Supplier: UNAVAILABLE		-  Botanical Garden Custom Code: 19-5220 TCX Price: 0.00
3	ARTWORK CODE: SCREENPRINT Placement: WL CHEST Notes: 2.5" LOGO, FOLLOW ARTWORK FILE AND POM Supplier: Factory Sourced		- ARTWORK Price: 0.00
LABEL AND TRIM PACKAGE			
4	ALD Woven Main Label W/ Size CODE: ALD-ML03 Placement: INTERIOR CENTER BACK NECK Supplier: Colonial Country of Origin: CHINA	1 Piece	- ALD Woven Main Label W/ Size Price: 0.079
5	ALD Hangtag CODE: ALD-T06P Placement: WEARER'S LEFT ARMHOLE ABOVE SIDE SEAM Supplier: Colonial Country of Origin: CHINA	1 Piece	- ALD Hangtag Price: 0.22
6	ALD Branded Polybag - 12" X 15" (RECYLCED) CODE: ALD-PB01-R Supplier: Colonial Country of Origin: CHINA	1 Piece	- ALD Branded Polybag - 12" x 15" (RECYLCED) Price: 0.21
7	ALD Woven Care + Content + COO Label CODE: ALD-COO-XXX Placement: INTERIOR WEARER'S LEFT SIDE SEAM, 5" ABOVE BODY HEM Supplier: Colonial Country of Origin: CHINA	1 Piece	- ALD Woven Care + Content + COO Label Price: 0.058
8	UPC Sticker CODE: UPC Placement: POLY BAG; BACK SIDE, UPPER RIGHT HAND CORNER Supplier: Factory Sourced	1	- UPC Sticker Price: 0.00
Components 8			Total 0.567