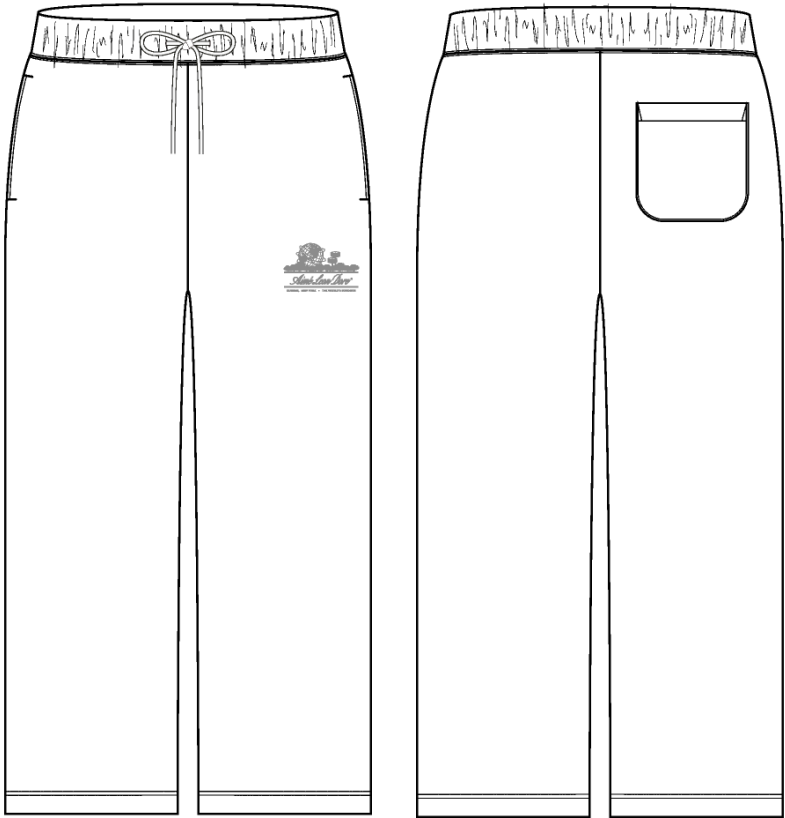


Unisphere Sweatpant

Name	Unisphere Sweatpant
Style No.	NOSCP001
Division	Mens
Category	Sweatpants
Season	Spring/Summer
Year	2025
Size Scale	<div>M -Sample size</div> <div><div>XS</div><div>S</div><div>M</div><div>L</div><div>XL</div><div>XXL</div></div>
Style Status	Adopted
Factory	UN-AVAILABLE
Designer Name	Lonz
TD Name	Anastasiya
Created by/Author	11/27/2024 Anastasiya Zolotova anastasiya.zolotova@aimeleondore.com



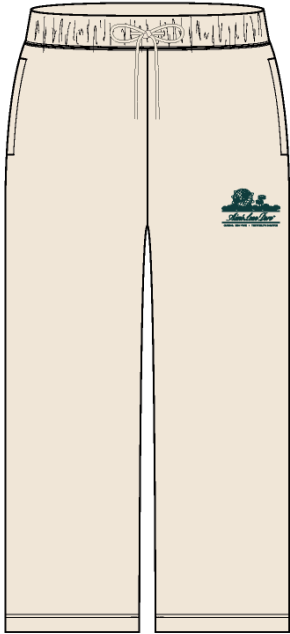
1\_B&W-1



BOTANICAL GARDEN

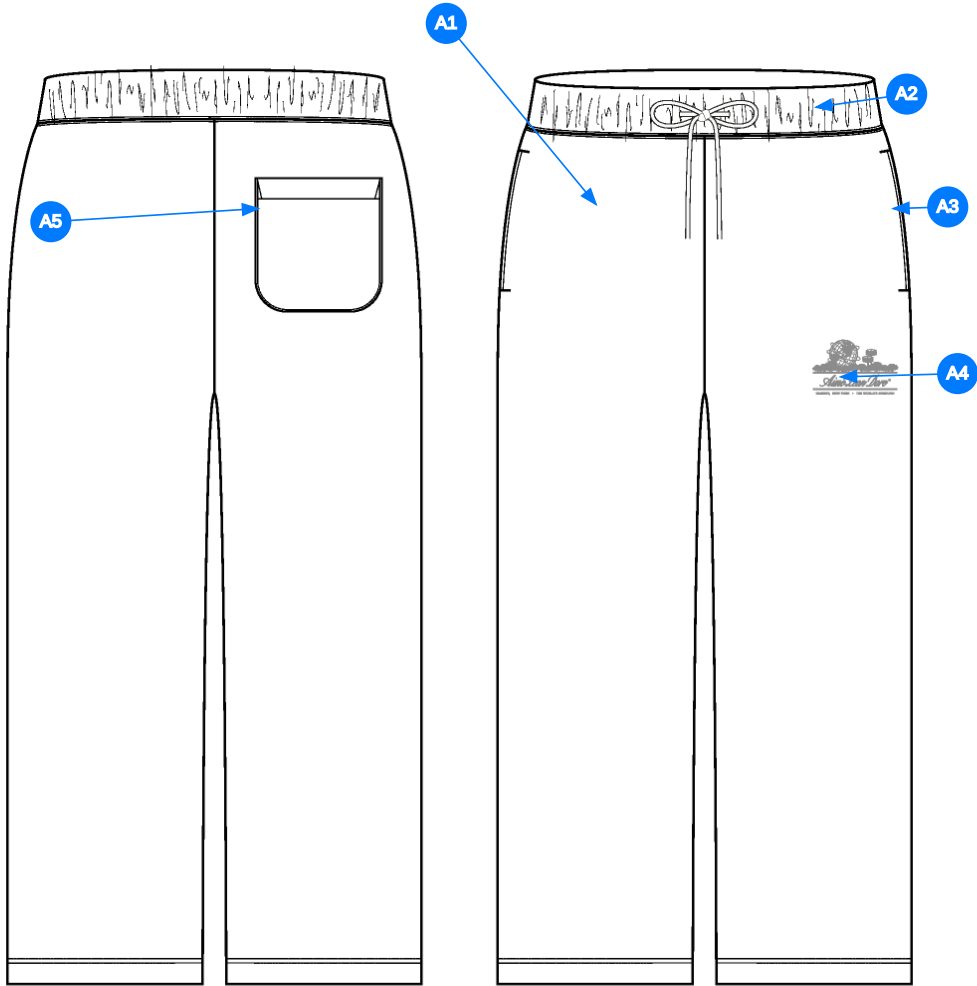


NAVY BLAZER



PRISTINE

2\_CLR-1



Comments (5)

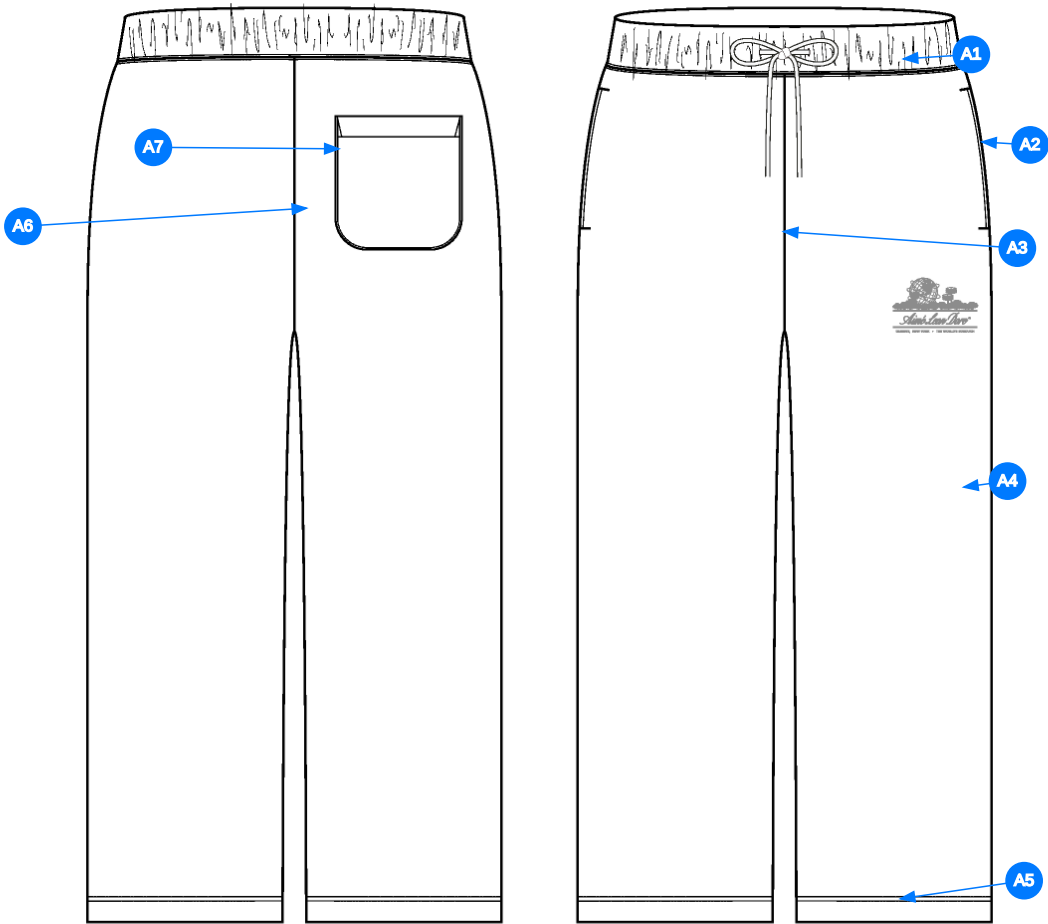
- A1 FIT: FW24CP001 MELANGE UNIFORM SWEATPANT
- A2 PIECED ON RIB WAISTBAND W/ DRAWCORDS - COTTON  
FLAT BRAIDED DRAWCORDS - DRAWCORD FINISHED W/  
TURNBACK - THREAD EYELETS
- A3 ON SEAM POCKETS @ SIDE SEAM - USE COTTON  
JERSEY FOR POCKETBAGS
- A4 ARTWORK @ WL LEG - SEE SEPARATE FILE FOR  
ARTWORK DETAILS
- A5 SELF FABRIC PATCH POCKETS

3\_Construction Details-1



Comments (7)

- A1 STRADDLE STITCH @ WAISTBAND
- A2 SN EDGE STITCH @ ON SEAM POCKET - BAR TACKS @ TOP & BOTTOM EDGES
- A3 CLEAN SEAM FINISH @ FRONT RISE
- A4 CLEAN SEAM FINISH @ SIDE SEAM
- A5 1/4" DN TS @ BOTTOM HEM
- A6 CLEAN SEAM FINISH @ BACK RISE
- A7 EDGE STITCH @ PATCH POCKETS



4\_Stitching Details-1

Sample Size: M

POINT OF MEASURE	HOW TO MEASURE	CRITICAL	TYPE	TOLERANCE	XS	S	M	L	XL	XXL
Waistband Height	Waist seam to top edge	false	Full	1/8 in	0 in	0 in	2 in	0 in	0 in	0 in
Waist Width Relaxed	Straight at top edge- garment relaxed	true	Half	1/2 in	-1 in	-1 in	15 3/8 in	1 in	1 in	1 in
Waist Width Extended	Straight, with waist or elastic stretched	true	Half	1/2 in	-1 in	-1 in	21 in	1 in	1 in	1 in
Distance Between Drawcord Exit		false	Full	1/8 in	0 in	0 in	1 1/2 in	0 in	0 in	0 in
Exposed Drawcord Length		false	Full	1/2 in	0 in	0 in	10 in	0 in	0 in	0 in
Front Rise	Crotch seam to waistband top edge	true	Half	3/8 in	-1/2 in	-1/2 in	13 1/4 in	1/2 in	1/2 in	1/2 in
Back Rise	Crotch seam to waistband top edge	true	Half	3/8 in	-1/2 in	-1/2 in	16 1/2 in	1/2 in	1/2 in	1/2 in
Low Hip Position Below Waistband Top Edge		true	Full	0 in	-1/4 in	-1/4 in	8 in	1/4 in	1/4 in	1/4 in
Low Hip Width	3-pt measurement taken 8" down from waistband top edge	true	Half	1/2 in	-1 in	-1 in	21 1/2 in	1 in	1 in	1 in
Thigh Width	1" below crotch point	false	Half	3/8 in	-5/8 in	-5/8 in	13 1/4 in	5/8 in	5/8 in	5/8 in
Knee Width	12" down from the crotch point	false	Half	3/8 in	-3/8 in	-3/8 in	11 1/2 in	3/8 in	3/8 in	3/8 in
Calf Width	Measured 18" down from Crotch point	false	Half	1/4 in	-3/8 in	-3/8 in	10 3/4 in	3/8 in	3/8 in	3/8 in
Leg Opening width at edge		false	Half	1/4 in	-1/4 in	-1/4 in	10 in	1/4 in	1/4 in	1/4 in
Inseam Length	Crotch point to leg opening, along seam	true	Full	1/2 in	0 in	0 in	29 1/2 in	0 in	1/2 in	0 in
Bottom Hem Height	Bottom edge to stitch line or trim seam	false	Full	1/8 in	0 in	0 in	1 in	0 in	0 in	0 in
Front Pocket Stitching Height		false	Full	1/8 in	0 in	0 in	5/8 in	0 in	0 in	0 in
Front Pocket Placement Below Waistband	Waistband seam to top of pocket	false	Full	1/4 in	0 in	0 in	3/4 in	0 in	0 in	0 in
Front Pocket Opening Length	Along opening edge	false	Full	1/4 in	0 in	-1/4 in	6 1/4 in	0 in	1/4 in	0 in
Pocket Bag Height	Top edge to bottom edge of pocket bag inside	false	Full	1/8 in	0 in	-1/4 in	11 1/2 in	0 in	1/4 in	0 in
Pocket Bag Width		false	Full	1/8 in	0 in	-1/4 in	7 in	0 in	1/4 in	0 in
WR Back Pocket Placement Below Waistband Seam Outer Corner	Waistband seam to top of pocket	false	Full	1/4 in	0 in	-1/4 in	2 1/4 in	0 in	1/4 in	0 in
WR Back Pocket Placement Below Waistband Seam Inner Corner		true	Full	1/8 in	0 in	0 in	2 3/8 in	0 in	0 in	0 in
WR Back Pocket Placement from CB Rise	Inside edge of pocket to CB rise seam	false	Full	1/4 in	0 in	-1/8 in	2 1/4 in	0 in	1/8 in	0 in
WR Back Pocket Hem Height	Edge to stitch line	false	Full	1/8 in	0 in	0 in	3/4 in	0 in	0 in	0 in
WR Back Pocket Width	Width of pocket at widest	false	Full	1/4 in	0 in	-1/4 in	5 3/4 in	0 in	1/4 in	0 in
WR Back Pocket Height	Top edge to bottom edge	false	Full	1/4 in	0 in	-1/4 in	6 1/4 in	0 in	1/4 in	0 in
WL Front Artwork Placement Below Pocket Edge		true	Full	1/8 in	0 in	0 in	5/8 in	0 in	0 in	0 in
WL Front Artwork Forward From Outseam		true	Full	1/8 in	0 in	0 in	2 1/8 in	0 in	0 in	0 in

Sample Size: M

POINT OF MEASURE	HOW TO MEASURE	CRITICAL	TYPE	TOLERANCE	XS	S	M	L	XL	XXL
Waistband Height	Waist seam to top edge	false	Full	1/8 in	2 in	2 in	2 in	2 in	2 in	2 in
Waist Width Relaxed	Straight at top edge- garment relaxed	true	Half	1/2 in	13 3/8 in	14 3/8 in	15 3/8 in	16 3/8 in	17 3/8 in	18 3/8 in
Waist Width Extended	Straight, with waist or elastic stretched	true	Half	1/2 in	19 in	20 in	21 in	22 in	23 in	24 in
Distance Between Drawcord Exit		false	Full	1/8 in	1 1/2 in	1 1/2 in	1 1/2 in	1 1/2 in	1 1/2 in	1 1/2 in
Exposed Drawcord Length		false	Full	1/2 in	10 in	10 in	10 in	10 in	10 in	10 in
Front Rise	Crotch seam to waistband top edge	true	Half	3/8 in	12 1/4 in	12 3/4 in	13 1/4 in	13 3/4 in	14 1/4 in	14 3/4 in
Back Rise	Crotch seam to waistband top edge	true	Half	3/8 in	15 1/2 in	16 in	16 1/2 in	17 in	17 1/2 in	18 in
Low Hip Position Below Waistband Top Edge		true	Full	0 in	7 1/2 in	7 3/4 in	8 in	8 1/4 in	8 1/2 in	8 3/4 in
Low Hip Width	3-pt measurement taken 8" down from waistband top edge	true	Half	1/2 in	19 1/2 in	20 1/2 in	21 1/2 in	22 1/2 in	23 1/2 in	24 1/2 in
Thigh Width	1" below crotch point	false	Half	3/8 in	12 in	12 5/8 in	13 1/4 in	13 7/8 in	14 1/2 in	15 1/8 in
Knee Width	12" down from the crotch point	false	Half	3/8 in	10 3/4 in	11 1/8 in	11 1/2 in	11 7/8 in	12 1/4 in	12 5/8 in
Calf Width	Measured 18" down from Crotch point	false	Half	1/4 in	10 in	10 3/8 in	10 3/4 in	11 1/8 in	11 1/2 in	11 7/8 in
Leg Opening width at edge		false	Half	1/4 in	9 1/2 in	9 3/4 in	10 in	10 1/4 in	10 1/2 in	10 3/4 in
Inseam Length	Crotch point to leg opening, along seam	true	Full	1/2 in	29 1/2 in	29 1/2 in	29 1/2 in	29 1/2 in	30 in	30 in
Bottom Hem Height	Bottom edge to stitch line or trim seam	false	Full	1/8 in	1 in	1 in	1 in	1 in	1 in	1 in
Front Pocket Stitching Height		false	Full	1/8 in	5/8 in	5/8 in	5/8 in	5/8 in	5/8 in	5/8 in
Front Pocket Placement Below Waistband	Waistband seam to top of pocket	false	Full	1/4 in	3/4 in	3/4 in	3/4 in	3/4 in	3/4 in	3/4 in
Front Pocket Opening Length	Along opening edge	false	Full	1/4 in	6 in	6 in	6 1/4 in	6 1/4 in	6 1/2 in	6 1/2 in
Pocket Bag Height	Top edge to bottom edge of pocket bag inside	false	Full	1/8 in	11 1/4 in	11 1/4 in	11 1/2 in	11 1/2 in	11 3/4 in	11 3/4 in
Pocket Bag Width		false	Full	1/8 in	6 3/4 in	6 3/4 in	7 in	7 in	7 1/4 in	7 1/4 in
WR Back Pocket Placement Below Waistband Seam Outer Corner	Waistband seam to top of pocket	false	Full	1/4 in	2 in	2 in	2 1/4 in	2 1/4 in	2 1/2 in	2 1/2 in
WR Back Pocket Placement Below Waistband Seam Inner Corner		true	Full	1/8 in	2 3/8 in	2 3/8 in	2 3/8 in	2 3/8 in	2 3/8 in	2 3/8 in
WR Back Pocket Placement from CB Rise	Inside edge of pocket to CB rise seam	false	Full	1/4 in	2 1/8 in	2 1/8 in	2 1/4 in	2 1/4 in	2 3/8 in	2 3/8 in
WR Back Pocket Hem Height	Edge to stitch line	false	Full	1/8 in	3/4 in	3/4 in	3/4 in	3/4 in	3/4 in	3/4 in
WR Back Pocket Width	Width of pocket at widest	false	Full	1/4 in	5 1/2 in	5 1/2 in	5 3/4 in	5 3/4 in	6 in	6 in
WR Back Pocket Height	Top edge to bottom edge	false	Full	1/4 in	6 in	6 in	6 1/4 in	6 1/4 in	6 1/2 in	6 1/2 in
WL Front Artwork Placement Below Pocket Edge		true	Full	1/8 in	5/8 in	5/8 in	5/8 in	5/8 in	5/8 in	5/8 in
WL Front Artwork Forward From Outseam		true	Full	1/8 in	2 1/8 in	2 1/8 in	2 1/8 in	2 1/8 in	2 1/8 in	2 1/8 in

Measured Size: M

POINT OF MEASURE	HOW TO MEASURE	CRITICAL	TYPE	TOLERANCE	EXPECTED	PPS - RCVD	VARIANCE	ADJUST BY +/-	REVISED SPEC	MEASUREMENT NOTES
Waistband Height	Waist seam to top edge	false	Full	1/8 in	2 in	2 1/8 in	1/8 in	0 in	2 in	
Waist Width Relaxed	Straight at top edge-garment relaxed	true	Half	1/2 in	15 3/8 in	15 3/8 in	0 in	0 in	15 3/8 in	
Waist Width Extended	Straight, with waist or elastic stretched	true	Half	1/2 in	21 in	21 in	0 in	0 in	21 in	
Distance Between Drawcord Exit		false	Full	1/8 in	1 1/2 in	1 1/2 in	0 in	0 in	1 1/2 in	
Exposed Drawcord Length		false	Full	1/2 in	10 in	0 in	0 in	0 in	10 in	
Front Rise	Crotch seam to waistband top edge	true	Half	3/8 in	13 1/4 in	13 1/4 in	0 in	0 in	13 1/4 in	
Back Rise	Crotch seam to waistband top edge	true	Half	3/8 in	16 1/2 in	16 1/2 in	0 in	0 in	16 1/2 in	
Low Hip Position Below Waistband Top Edge		true	Full	0 in	8 in	8 in	0 in	0 in	8 in	
Low Hip Width	3-pt measurement taken 8" down from waistband top edge	true	Half	1/2 in	21 1/2 in	21 1/2 in	0 in	0 in	21 1/2 in	
Thigh Width	1" below crotch point	false	Half	3/8 in	13 1/4 in	13 1/4 in	0 in	0 in	13 1/4 in	
Knee Width	12" down from the crotch point	false	Half	3/8 in	11 1/2 in	11 1/2 in	0 in	0 in	11 1/2 in	
Calf Width	Measured 18" down from Crotch point	false	Half	1/4 in	10 3/4 in	10 3/4 in	0 in	0 in	10 3/4 in	
Leg Opening width at edge		false	Half	1/4 in	10 in	10 in	0 in	0 in	10 in	
Inseam Length	Crotch point to leg opening, along seam	true	Full	1/2 in	30 in	28 1/2 in	-1 1/2 in	-1/2 in	29 1/2 in	Follow Revised
Bottom Hem Height	Bottom edge to stitch line or trim seam	false	Full	1/8 in	1 in	1 in	0 in	0 in	1 in	
Front Pocket Stitching Height		false	Full	1/8 in	5/8 in	5/8 in	0 in	0 in	5/8 in	
Front Pocket Placement Below Waistband	Waistband seam to top of pocket	false	Full	1/4 in	3/4 in	3/4 in	0 in	0 in	3/4 in	
Front Pocket Opening Length	Along opening edge	false	Full	1/4 in	6 1/4 in	6 1/4 in	0 in	0 in	6 1/4 in	
Pocket Bag Height	Top edge to bottom edge of pocket bag inside	false	Full	1/8 in	11 1/2 in	0 in	0 in	0 in	11 1/2 in	
Pocket Bag Width		false	Full	1/8 in	7 in	0 in	0 in	0 in	7 in	
WR Back Pocket Placement Below Waistband Seam Outer Corner	Waistband seam to top of pocket	false	Full	1/4 in	2 1/4 in	2 1/4 in	0 in	0 in	2 1/4 in	
WR Back Pocket Placement Below Waistband Seam Inner Corner		true	Full	1/8 in	0 in	2 1/4 in	2 1/4 in	2 3/8 in	2 3/8 in	Follow Revised
WR Back Pocket Placement from CB Rise	Inside edge of pocket to CB rise seam	false	Full	1/4 in	2 1/4 in	2 in	-1/4 in	0 in	2 1/4 in	
WR Back Pocket Hem Height	Edge to stitch line	false	Full	1/8 in	3/4 in	3/4 in	0 in	0 in	3/4 in	
WR Back Pocket Width	Width of pocket at widest	false	Full	1/4 in	5 3/4 in	6 in	1/4 in	0 in	5 3/4 in	
WR Back Pocket Height	Top edge to bottom edge	false	Full	1/4 in	6 1/4 in	6 1/8 in	-1/8 in	0 in	6 1/4 in	
WL Front Artwork Placement Below Pocket Edge		true	Full	1/8 in	5/8 in	5 in	4 3/8 in	0 in	5/8 in	Back to Spec
WL Front Artwork Forward From Outseam		true	Full	1/8 in	2 1/8 in	2 in	-1/8 in	0 in	2 1/8 in	

PPS - Anastasiya Zolotova

CREATED ON NOV 27, 2024 5:54 PM  
PPS: SIZE:M, CREATED AT: 11-25-2024

NOSCP001 Unisphere Sweatpant

FITTING DATE: 11/26/24

MODEL/ATTENDEES: Jessica,Anthony, Cal,Wes,Megan,Jeni,Anastasiya

STATUS: PPS Approved to TOP **MẪU PPS ĐƯỢC APPROVED ĐẾN TOP SAMPLE**

Trims:  
No Drawcords - Please send an image of waistband with drawcords when received bulk drawcords for reference.

Fit Comments:

- 1. WL leg panel is twisting and torquing, please see image. The inseam is very far forward and not as requested. Please ensure that this does not happen in production.
- 2. Inseam came in -1 1/2" from requested, follow revised measurement of 29 1/2"
- 3. WL front artwork came in 4 3/8" lower than requested, please see image and ensure that artwork goes back to requested position.
- 4. Adding back pocket placement from waistband seam inner coner and lower slightly so that it looks straight on wearer to be 2 3/8". See image.

Construction/Workmanship:

- 1. Please note sample does not follow previous call out of edge stitch at front pocket edge. See image and adjust for bulk.
- 2. Main label loop label is approved however please see workmanship comments.
  - Right label application is better because its inserted straighter. Left label looks too wavy.
  - Main label has some rippling at edges,
  - Please trim loose threads right side has too many loose threads along CB seam edge.

**FIT COMMENT:**

- 1. ỐNG QUẦN BÊN CHÂN TRÁI BỊ VẶN. XEM HÌNH BÊN DƯỚI. ĐƯỜNG SƯỜN BỊ ĐẨY RA. VUI LÒNG CẢI THIỆN CHO ĐƠN HÀNG BULK
- 2. DÀI SƯỜN BỊ ÂM -1 1/2", VUI LÒNG THEO THAY ĐỔI THÔNG SỐ ĐẾN 29 1/2"
- 3. ARTWORK THÂN TRƯỚC BÊN TRÁI LÀ 4 3/8" NGOÀI DUNG SAI. XEM HÌNH BÊN DƯỚI VÀ ĐẢM BẢO ARTWORK THEO ĐÚNG THÔNG SỐ NHƯ YÊU CẦU.
- 4. THÊM VỊ TRÍ TÚI SAU TỪ ĐƯỜNG MAY LƯNG GỐC TRONG VÀ DI CHUYỂN XUỐNG 1 ÍT ĐỂ ĐẢM BẢO TÚI THẲNG TRÊN NGƯỜI MẶC LÀ 2 3/8". XEM HÌNH BÊN DƯỚI.

**CẤU TRÚC MAY:**

- 1. MẪU KHÔNG LÀM THEO GÓP Ý TRÊN MẪU FIT CHO ĐIỂM ĐƯỜNG CHỈ CẠNH TẠI CẠNH TÚI TRƯỚC. XEM HÌNH VÀ ĐIỀU CHỈNH CHO ĐƠN HÀNG SẢN XUẤT.
- 2. NHẤN CHÍNH ĐƯỢC APPROVED TUY NHIÊN VUI LÒNG ĐIỀU CHỈNH CÁCH MAY NHƯ BÊN DƯỚI:
  - > NHẤN BÊN PHẢI ĐƯỢC MAY ĐẸP HƠN BỞI VÌ ĐƯỜNG MAY THẲNG. NHẤN BÊN TRÁI BỊ GỖN.
  - > NHẤN CHÍNH BỊ TỬA TẠI CẠNH
  - > VUI LÒNG CẮT HẾT CHỈ THỪA PHÍA BÊN PHẢI VÀ Ở GIỮA LƯNG



Screen Shot 2024-11-26 at 1.34.37 PM.jpg



**ỐNG QUẦN BÊN CHÂN TRÁI BỊ VẶN. XEM HÌNH BÊN DƯỚI. ĐƯỜNG SƯỜN BỊ ĐẨY RA. VUI LÒNG CẢI THIỆN CHO ĐƠN HÀNG BULK**

NOSCP001 Unisphere Sweatpant

WL leg panel is twisting and torquing, please see image.  
The inseam is very far forward and not as requested.  
Please ensure that this does not happen in production.



Screen Shot 2024-11-27 at 3.11.35 PM.jpg

. NHẬN CHÍNH ĐƯỢC APPROVED TUY NHIÊN VUI LÒNG ĐIỀU CHỈNH CÁCH MAY NHƯ BÊN DƯỚI:  
--> NHẬN BÊN PHẢI ĐƯỢC MAY ĐẸP HƠN BỞI VÌ ĐƯỜNG MAY THẲNG. NHẬN BÊN TRÁI BỊ GỌN.  
--> NHẬN CHÍNH BỊ TUA TẠI CẠNH  
--> VUI LÒNG CẮT HẾT CHỈ THỪA PHÍA BÊN PHẢI VÀ Ở GIỮA LƯNG

## Sweatpants - Main Label Call Out

1. Main label loop label is approved however please see workmanship comments.
  - Right label application is better because its inserted straighter. Left label looks too wavy.
  - Main label has some rippling at edges,
  - Please trim loose threads right side has too many loose threads along CB seam edge.



Screen Shot 2024-11-27 at 2.01.50 PM.jpg



ARTWORK THÂN TRƯỚC BÊN TRÁI LÀ 4 3/8" NGOÀI DUNG SAI. XEM HÌNH BÊN DƯỚI VÀ ĐẢM BẢO ARTWORK THEO ĐÚNG THÔNG SỐ NHƯ YÊU CẦU.

NOSCP001 Unisphere Sweatpant

WL front artwork came in 4 3/8" lower than requested,  
please see image and ensure that artwork goes back to requested position.



Screen Shot 2024-11-27 at 3.07.42 PM.jpg

MẪU KHÔNG LÀM THEO GÓP Ý TRÊN MẪU FIT CHO ĐIỂM ĐƯỜNG CHỈ CẠNH TẠI CẠNH TÚI TRƯỚC. XEM HÌNH VÀ ĐIỀU CHỈNH CHO ĐƠN HÀNG SẢN XUẤT

NOSCP001 Unisphere Sweatpant

Please note sample does not follow previous call out of edge stitch at front pocket edge.



Screen Shot 2024-11-27 at 3.09.35 PM.jpg

NOSCP001

THÔNG SỐ SẢN XUẤT FULL SIZE

28-Nov

N0	POINT OF MEASURE	VỊ TRÍ ĐO	CODE	HOW TO MEASURE	QUY CÁCH ĐO	CRITICAL	TYPE	TOLERANCE	XS	S	M	L	XL	XXL
1	Waistband Height	TO BÀN LƯNG		Waist seam to top edge	TỪ ĐƯỜNG TRA LƯNG TỚI MÉP TRÊN LƯNG	false	Full	1/8 in	2 in	2 in	2 in	2 in	2 in	2 in
2	Waist Width Relaxed	RỘNG LƯNG ĐO ÊM		Straight at top edge- garment relaxed	ĐO THẲNG TẠI MÉP TRÊN - ĐO ÊM	true	Half	1/2 in	13 3/8 in	14 3/8 in	15 3/8 in	16 3/8 in	17 3/8 in	18 3/8 in
3	Waist Width Extended	RỘNG LƯNG ĐO CĂNG		Straight, with waist or elastic stretched	ĐO THẲNG- ĐO CĂNG	true	Half	1/2 in	19 in	20 in	21 in	22 in	23 in	24 in
4	Distance Between Drawcord Exit	KHOẢNG CÁCH GIỮA 2 MẮT CÁO				false	Full	1/8 in	1 1/2 in	1 1/2 in	1 1/2 in	1 1/2 in	1 1/2 in	1 1/2 in
5	Exposed Drawcord Length	DÀI DÂY LUÔN LỘ RA				false	Full	1/2 in	10 in	10 in	10 in	10 in	10 in	10 in
6	Front Rise	ĐÁY TRƯỚC		Crotch seam to waistband top edge	TỪ ĐƯỜNG MAY ĐÁY TỚI MÉP LƯNG TRÊN	true	Half	3/8 in	12 1/4 in	12 3/4 in	13 1/4 in	13 3/4 in	14 1/4 in	14 3/4 in
7	Back Rise	ĐÁY SAU		Crotch seam to waistband top edge	TỪ ĐƯỜNG MAY ĐÁY TỚI MÉP LƯNG TRÊN	true	Half	3/8 in	15 1/2 in	16 in	16 1/2 in	17 in	17 1/2 in	18 in
8	Low Hip Position Below Waistband Top Edge	VỊ TRÍ HÔNG DƯỚI MÉP LƯNG TRÊN				true	Full	0 in	7 1/2 in	7 3/4 in	8 in	8 1/4 in	8 1/2 in	8 3/4 in
9	Low Hip Width	RỘNG HÔNG		3-pt measurement taken 8" down from waistband top edge	ĐO 3 ĐIỂM - 8" DƯỚI MÉP LƯNG TRÊN	true	Half	1/2 in	19 1/2 in	20 1/2 in	21 1/2 in	22 1/2 in	23 1/2 in	24 1/2 in
10	Thigh Width	RỘNG ĐÙI		1" below crotch point	1" DƯỚI ĐÁY	false	Half	3/8 in	12 in	12 5/8 in	13 1/4 in	13 7/8 in	14 1/2 in	15 1/8 in
11	Knee Width	RỘNG ÓNG QUẦN		12" down from the crotch point	12" DƯỚI ĐÁY	false	Half	3/8 in	10 3/4 in	11 1/8 in	11 1/2 in	11 7/8 in	12 1/4 in	12 5/8 in
12	Calf Width	RỘNG BẮP CHÂN		Measured 18" down from Crotch point	18" DƯỚI ĐÁY	false	Half	1/4 in	10 in	10 3/8 in	10 3/4 in	11 1/8 in	11 1/2 in	11 7/8 in
13	Leg Opening width at edge	CỬA QUẦN TẠI MÉP				false	Half	1/4 in	9 1/2 in	9 3/4 in	10 in	10 1/4 in	10 1/2 in	10 3/4 in
14	Inseam Length	DÀI SƯỜN TRONG		Crotch point to leg opening, along seam	TỪ ĐÁY TỚI CỬA QUẦN	true	Full	1/2 in	29 1/2 in	29 1/2 in	29 1/2 in	29 1/2 in	30 in	30 in
15	Bottom Hem Height	TO BÀN LAI		Bottom edge to stitch line or trim seam	TỪ MÉP TỚI ĐƯỜNG ĐIỀU	false	Full	1/8 in	1 in	1 in	1 in	1 in	1 in	1 in
16	Front Pocket Stitching Height	CAO ĐIỀU TÚI				false	Full	1/8 in	5/8 in	5/8 in	5/8 in	5/8 in	5/8 in	5/8 in
17	Front Pocket Placement Below Waistband	VỊ TRÍ TÚI TRƯỚC DƯỚI LƯNG		Waistband seam to top of pocket	TỪ ĐƯỜNG MAY LƯNG TỚI ĐỈNH MÉP TÚI	false	Full	1/4 in	3/4 in	3/4 in	3/4 in	3/4 in	3/4 in	3/4 in
18	Front Pocket Opening Length	DÀI MIỆNG TÚI		Along opening edge	ĐỌC MÉP TÚI	false	Full	1/4 in	6 in	6 in	6 1/4 in	6 1/4 in	6 1/2 in	6 1/2 in
19	Pocket Bag Height	CAO BAO TÚI		Top edge to bottom edge of pocket bag inside	TỚI MIỆNG TÚI TỚI MÉP BAO TÚI BÊN TRONG	false	Full	1/8 in	11 1/4 in	11 1/4 in	11 1/2 in	11 1/2 in	11 3/4 in	11 3/4 in
20	Pocket Bag Width	RỘNG BAO TÚI				false	Full	1/8 in	6 3/4 in	6 3/4 in	7 in	7 in	7 1/4 in	7 1/4 in
21	WR Back Pocket Placement Below Waistband Seam Outer Corner	TÚI SAU BÊN TRÁI NGƯỜI MẠC DƯỚI ĐƯỜNG MAY LƯNG GÓC NGOÀI		Waistband seam to top of pocket	TỪ ĐƯỜNG MAY LƯNG TỚI ĐỈNH MÉP TÚI	false	Full	1/4 in	2 in	2 in	2 1/4 in	2 1/4 in	2 1/2 in	2 1/2 in
22	WR Back Pocket Placement Below Waistband Seam Inner Corner	TÚI SAU BÊN PHẢI NGƯỜI MẠC DƯỚI ĐƯỜNG TRA LƯNG BÊN GÓC TRONG NGƯỜI MẠC				true	Full	1/8 in	2 3/8 in	2 3/8 in	2 3/8 in	2 3/8 in	2 3/8 in	2 3/8 in
23	WR Back Pocket Placement from CB Rise	VỊ TRÍ TÚI SAU PHẢI TỪ GIỮA ĐÁY SAU		Inside edge of pocket to CB rise seam	MÉP TRONG CỦA TÚI TỚI ĐƯỜNG MAY ĐÁY GIỮA SAU	false	Full	1/4 in	2 1/8 in	2 1/8 in	2 1/4 in	2 1/4 in	2 3/8 in	2 3/8 in
24	WR Back Pocket Hem Height	CAO MIỆNG TÚI THÂN SAU		Edge to stitch line	TỪ MÉP TỚI ĐƯỜNG ĐIỀU	false	Full	1/8 in	3/4 in	3/4 in	3/4 in	3/4 in	3/4 in	3/4 in
25	WR Back Pocket Width	RỘNG TÚI THÂN SAU		Width of pocket at widest	RỘNG TÚI TẠI ĐIỂM RỘNG NHẤT	false	Full	1/4 in	5 1/2 in	5 1/2 in	5 3/4 in	5 3/4 in	6 in	6 in
26	WR Back Pocket Height	CAO TÚI THÂN SAU		Top edge to bottom edge	TỪ MÉP TRÊN TỚI MÉP DƯỚI	false	Full	1/4 in	6 in	6 in	6 1/4 in	6 1/4 in	6 1/2 in	6 1/2 in
27	WL Front Artwork Placement Below Pocket Edge	VỊ TRÍ HÌNH IN QUẦN TRÁI DƯỚI MÉP TÚI				true	Full	1/8 in	5/8 in	5/8 in	5/8 in	5/8 in	5/8 in	5/8 in

NOSCP001

THÔNG SỐ SẢN XUẤT FULL SIZE

28-Nov

N0	POINT OF MEASURE	VỊ TRÍ ĐO	CODE	HOW TO MEASURE	QUY CÁCH ĐO	CRITICAL	TYPE	TOLERANCE	XS	S	M	L	XL	XXL
28	WL Front Artwork Forward From Outseam	VỊ TRÍ HÌNH IN QUẦN TRÁI TỪ SƯỜN NGOÀI VÀO				true	Full	1/8 in	2 1/8 in	2 1/8 in	2 1/8 in	2 1/8 in	2 1/8 in	2 1/8 in