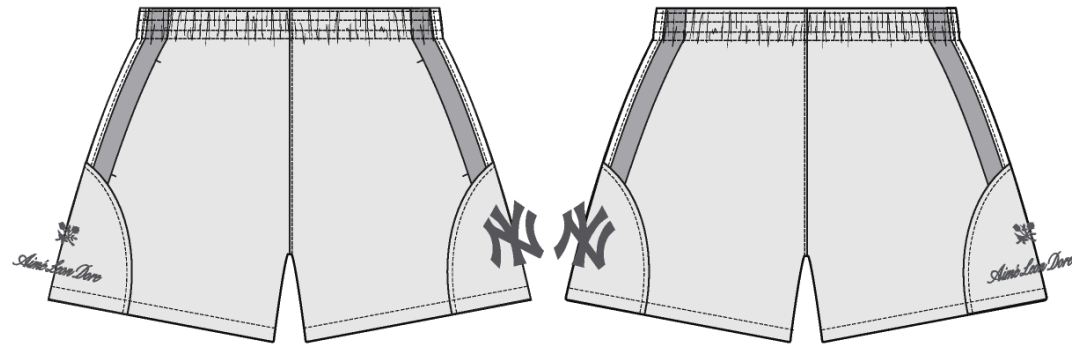


Name	MLB Yankees Running Short
Style No.	SS25WR030
Division	Mens
Category	Shorts
Season	Spring/Summer
Year	2025
Size Scale	<div>M</div> -Sample size
	<div>XS</div> <div>S</div> <div>M</div> <div>L</div> <div>XL</div> <div>XXL</div>
Style Status	Development
Designer Name	Quinton
Created by/Author	12/9/2024 Kilsy Morocho kilsy.morocho@aimeleondore.com

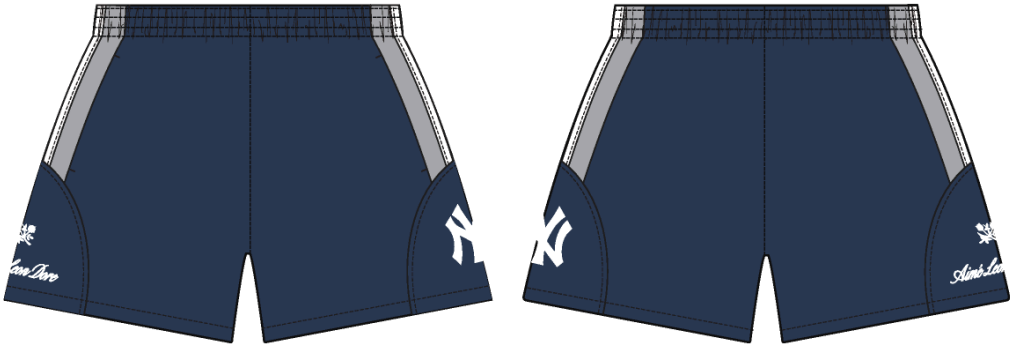
MLB Yankees Running Short



1. ● Blue Nights 19-4023 TCX
Int. Code: Not Set
Ext. Code: Not Set

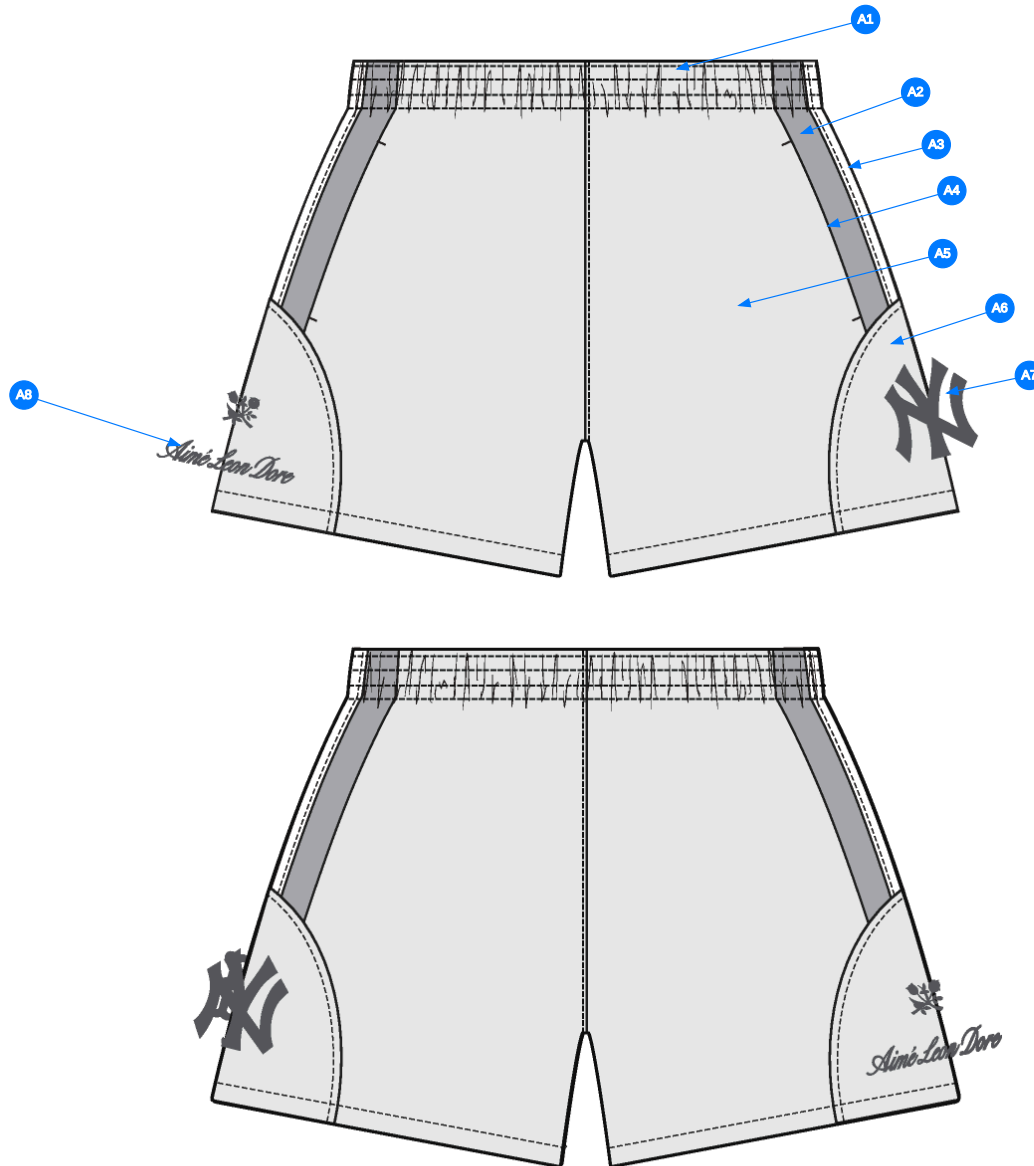


1_B+W_12-1



NAVY BLAZER

2_CLR_12-1

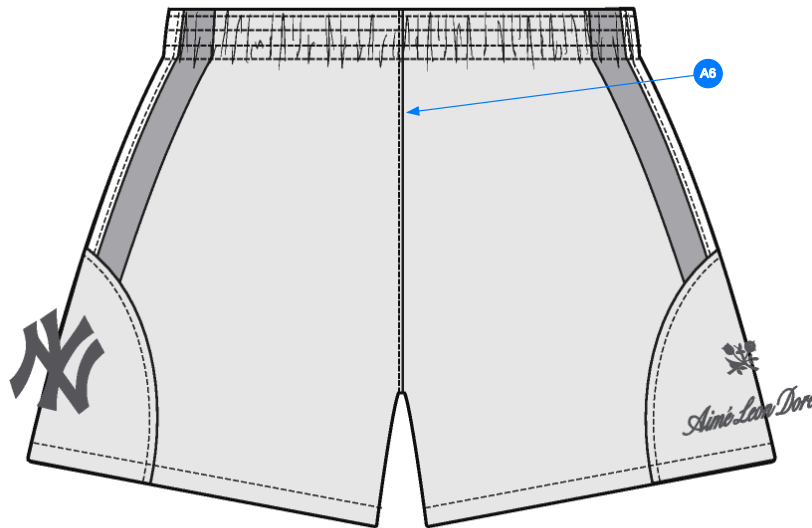
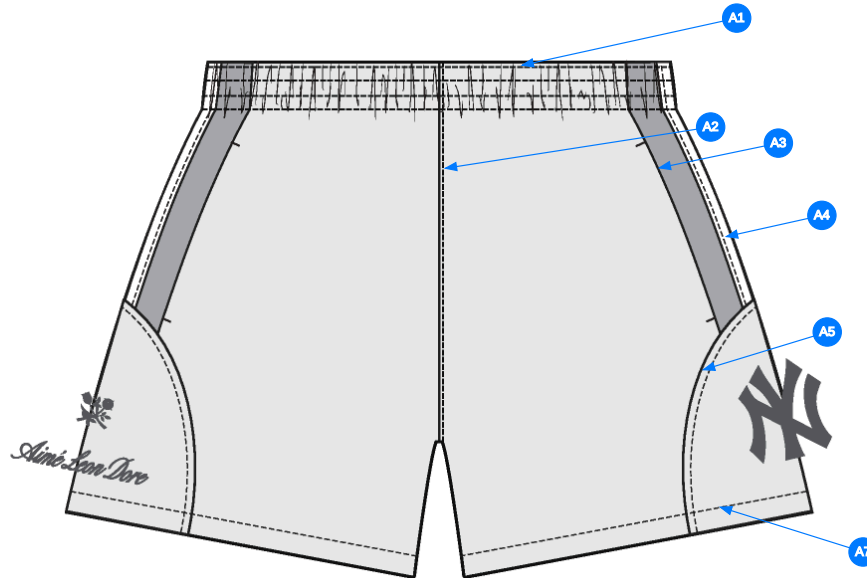


Comments (8)

- A1** GROWN-ON ELASTICATED WAISTBAND CONSTRUCTION
- A2** SET-IN CONTRAST COLOR SIDE PANEL CONSTRUCTION
- A3** POLY GROSGRAIN TAPE @ CENTER OF SIDE PANEL
- A4** ON SEAM HAND POCKETS @ FRONT SIDE PANEL SEAM - USE SELF FOR POCKET BAGS
- A5** GARMENT IS FULLY LINED WITH MESH
- A6** TOP APPLIED SELF FABRIC PANEL
- A7** DIRECT EMBROIDERY ARTWORK CENTERED @ WEARER'S LEFT TOP APPLIED PANEL - SEE CALLOUT PAGE FOR DETAILS
- A8** DIRECT EMBROIDERY ARTWORK CENTERED @ WEARER'S RIGHT TOP APPLIED PANEL - SEE CALLOUT PAGE FOR DETAILS

1. cấu trúc lưng quần liền
2. phối sườn bằng vải chính khác màu
3. dây tape dẹt ngang tại giữa phối sườn
4. túi dọc đường may sườn trước - lót túi bằng vải chính
5. quần 1 lớp bằng vải lưới
6. phối lai bằng vải chính
7. hình thêu tại giữa phối lai trái
8. hình thêu tại giữa phối lai phải

3_CONSTRUCTION DETAILS_12-1

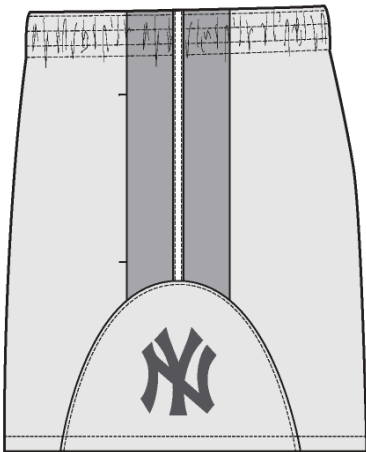


4_STITCHING DETAILS_12-1

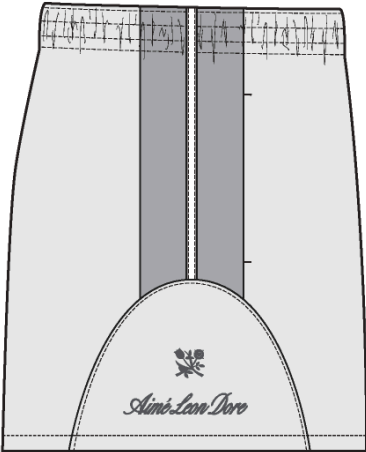
Comments (7)

- A1 SN TS @ WAISTBAND
- A2 EDGESTITCH @ CF RISE
- A3 CLEAN FINISH @ SET-IN PANEL
- A4 EDGESTITCH @ BOTH SIDES OF SIDE GROSGRAIN
- A5 EDGESTITCH @ TOP APPLIED PANEL
- A6 EDGESTITCH @ BACK RISE
- A7 1/2" SN TS @ HEM

1. điều 1 kim tại lưng quần
2. mí điều tại đáy trước
3. may sạch tại phối sườn
4. mí điều tại 2 bên cạnh dây tape
5. mí điều tại phối lai
6. mí điều tại đáy sau
7. điều 1 kim 1/2" tại lai quần



WEARER'S LEFT SIDE VIEW



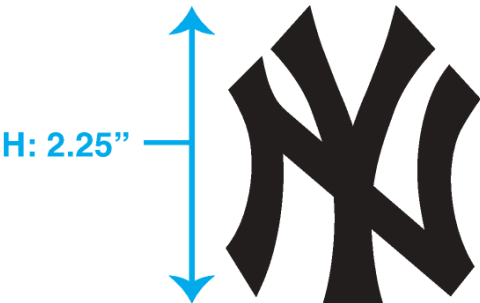
WEARER'S RIGHT SIDE VIEW

5_SIDE VIEW_12-1

ARTWORK DETAILS

- ARTWORK IS A DIRECT EMBRODIERY
- SEE SEPARATE FILE FOR ACTUAL SIZE ARTWORK

DIMENSIONS:



NAVY COLORWAY



 SERAFIL - #2000

6_ARTWORK_11-1

ARTWORK DETAILS

- ARTWORK IS A DIRECT EMBROIDERY
- SEE SEPARATE FILE FOR ACTUAL SIZE ARTWORK

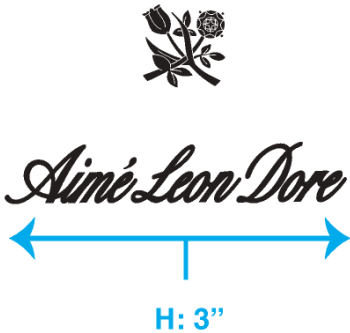
OPTION #1

DIMENSIONS:



OPTION #2

DIMENSIONS:



NAVY COLORWAY



7_ARTWORK_11-1

Sample Size: M

POINT OF MEASURE	CODE	HOW TO MEASURE	CRITICAL	TYPE	TOLERANCE	M
WAISTBAND TOPSTITCHING HEIGHT, TOTAL	WV		false	Full	1/8 in	1 3/4 in
WAIST CIRCUMFERENCE - RELAXED	WV102	ACROSS TOP EDGE OF WAISTBAND	true	Half	1/2 in	33 in
WAIST CIRCUMFERENCE - STRETCHED	WV103	ACROSS THE TOP OF WAISTBAND	true	Full	1/2 in	41 in
WAIST DRAWCORD LENGTH - TOTAL	WV104		false	Full	1 in	52 in
FRONT RISE FROM CROTCH SM TO TOP EDGE	WV105	FROM FRONT CROTCH SEAM TO TOP EDGE OF FRONT WAISTBAND	true	Full	1/4 in	12 3/8 in
BACK RISE FROM CROTCH SM TO TOP EDGE	WV106	FROM BACK CROTCH SEAM TO TOP EDGE OF BACK WAISTBAND	true	Full	1/4 in	16 1/8 in
LOW HIP POSITION BELOW WB TOP EDGE	WV107	MEAS. X" DOWN FROM TOP EDGE OF WAISTBAND	true	Full	0 in	8 in
LOW HIP CIRCUMFERENCE	WV	3PT MEAS. - FROM WR SIDE SEAM, CF, TO WL SIDE SEAM	true	Full	1/2 in	47 1/2 in
THIGH CIRC. AT 1" BELOW CROTCH SM	WV109	MEAS. AT 1" BELOW CROTCH, ACROSS TO SIDE SEAM	true	Full	1/2 in	29 in
LEG OPENING CIRC. AT BOTTOM EDGE (SHORTS)	WV130	MEASURE AT LEG EDGE	true	Full	1/2 in	28 1/2 in
BOTTOM HEM TOPSTITCHING HEIGHT	WV016		false	Full	1/8 in	1 in
INSEAM (SHORTS)	WV131	MEAS. ALONG THE INSEAM FROM CF CROTCH SEAM TO LEG EDGE	true	Full	1/4 in	5 1/4 in
FRONT POCKET PLACEMENT BELOW WB SEAM	WV	MEASURE ALONG SIDE SEAM	false	Full	1/8 in	1/2 in
FRONT POCKET OPENING LENGTH	WV FRONT POCKET	MEASURE ALONG SIDE SEAM FROM WB SEAM	false	Full	1/4 in	6 1/2 in
LEG INSET HEIGHT AT CENTER	WV	MEASURE AT CENTER OF PANEL	false	Full	1/8 in	6 in
LEG INSET WIDTH AT BOTTOM EDGE	WV		false	Full	1/8 in	7 1/4 in

PPS Request - Kilsy Morocho

CREATED ON DEC 9, 2024 4:47 PM

Date: 12/09/24
Status: Submit PPS in bulk fabric and trims
TD: Kilsy Morocho

Fit:
1. Overall fit to follow SS25WR029 MLB Mets Running Short – 1st proto/1st fit revisions.

Construction:
1. Overall construction to follow SS25WR029 MLB Mets Running Short – 1st proto/1st fit revisions.

Fit và cấu trúc theo mã SS25WR029 MLB Mets Running Short

SS25WR029														
No	Sample Size: M POINT OF MEASURE		CODE	HOW TO MEASURE		CRITICAL	TYPE	TOLERANCE	EXPECTED	PROTO - RCVD	VARIANC E	ADJUST BY +/-	REVISED SPEC	MEASUREMENT NOTES
1	WAISTBAND TOPSTITCHING HEIGHT, TOTAL	CAO LƯNG QUẦN	WV			false	Full	1/8 in	1 3/4 in	1 3/4 in	0 in	0 in	1 3/4 in	
2	WAIST CIRCUMFERENCE - RELAXED	LƯNG QUẦN NGUYÊN VÒNG ĐO ỀM	WV102	ACROSS TOP EDGE OF WAISTBAND	ĐO NGANG THEO MÉP DƯỚI LƯNG QUẦN	true	Half	1/2 in	33 in	33 1/2 in	1/2 in	0 in	33 in	
3	WAIST CIRCUMFERENCE - STRETCHED	LƯNG QUẦN NGUYÊN VÒNG ĐO CĂNG	WV103	ACROSS THE TOP OF WAISTBAND	ĐO NGANG THEO MÉP TRÊN LƯNG QUẦN	true	Full	1/2 in	41 in	41 in	0 in	0 in	41 in	
4	WAIST DRAWCORD LENGTH - TOTAL	DÀI DÂY LƯƠN -TÔNG	WV104			false	Full	1 in	52 in	54 in	2 in	0 in	52 in	MUST REDUCE BACK TO SPEC
5	FRONT RISE FROM CROTCH SM TO TOP EDGE	ĐÁY TRƯỚC TỪ ĐƯỜNG MAY ĐÁY ĐẾN MÉP TRÊN LƯNG	WV105	FROM FRONT CROTCH SEAM TO TOP EDGE OF FRONT WAISTBAND	TỪ ĐƯỜNG MAY ĐÁY TRƯỚC ĐẾN MÉP TRÊN LƯNG	true	Full	1/4 in	12 3/8 in	12 3/4 in	3/8 in	0 in	12 3/8 in	MUST REDUCE BACK TO SPEC
6	BACK RISE FROM CROTCH SM TO TOP EDGE	ĐÁY SAU TỪ ĐƯỜNG MAY ĐÁY ĐẾN MÉP TRÊN LƯNG	WV106	FROM BACK CROTCH SEAM TO TOP EDGE OF BACK WAISTBAND	TỪ ĐƯỜNG MAY ĐÁY SAU ĐẾN MÉP TRÊN LƯNG	true	Full	1/4 in	16 1/8 in	16 1/4 in	1/8 in	0 in	16 1/8 in	
7	LOW HIP POSITION BELOW WB TOP EDGE	MÔNG VỊ TRÍ DƯỚI LƯNG TRÊN QUẦN	WV107	MEAS. X" DOWN FROM TOP EDGE OF WAISTBAND	HẠ TỪ MÉP TRÊN LƯNG QUẦN XUỐNG	true	Full	0 in	8 in	8 in	0 in	0 in	8 in	
8	LOW HIP CIRCUMFERENCE	MÔNG NGUYÊN VÒNG	WV	3PT MEAS. - FROM WR SIDE SEAM, CF. TO WL SIDE SEAM	3 ĐIỂM - TỪ ĐƯỜNG MAY SƯỜN PHẢI, GIỮA THÂN TRƯỚC ĐẾN SƯỜN TRÁI	true	Full	1/2 in	47 1/2 in	49 in	1 1/2 in	0 in	47 1/2 in	KEEP AS SAMPLE
9	THIGH CIRC. AT 1" BELOW CROTCH SM	ĐUÔI TẠI DƯỚI ĐƯỜNG MAY ĐÁY 1"	WV109	MEAS. AT 1" BELOW CROTCH, ACROSS TO SIDE SEAM	HẠ 1" DƯỚI ĐƯỜNG MAY ĐÁY	true	Full	1/2 in	29 in	29 3/4 in	3/4 in	0 in	29 in	KEEP AS SAMPLE
10	LEG OPENING CIRC. AT BOTTOM EDGE (SHORTS)	RỘNG ỒNG QUẦN NGUYÊN VÒNG TẠI MÉP	WV130	MEASURE AT LEG EDGE	ĐO TẠI MÉP QUẦN	true	Full	1/2 in	28 1/2 in	28 1/2 in	0 in	0 in	28 1/2 in	
11	BOTTOM HEM TOPSTITCHING HEIGHT	CAO LẠI QUẦN	WV016			false	Full	1/8 in	1 in	1 in	0 in	0 in	1 in	
12	INSEAM (SHORTS)	DÀI SƯỜN TRONG	WV131	MEAS. ALONG THE INSEAM FROM CF CROTCH SEAM TO LEG EDGE	ĐO DỌC THEO ĐƯỜNG MAY TỪ ĐM ĐÁY ĐẾN MÉP	true	Full	1/4 in	5 1/4 in	5 1/4 in	0 in	0 in	5 1/4 in	
13	FRONT POCKET PLACEMENT BELOW WB SEAM	VỊ TRÍ TÚI TRƯỚC DƯỚI ĐƯỜNG MAY LƯNG	WV	MEASURE ALONG SIDE SEAM		false	Full	1/8 in	0 in	0 in	0 in	1/2 in	1/2 in	POM ADDED
14	FRONT POCKET OPENING LENGTH	DÀI MIỆNG TÚI TRƯỚC	WV FRONT POCKET	MEASURE ALONG SIDE SEAM FROM WB SEAM	ĐO DỌC ĐƯỜNG MAY SƯỜN	false	Full	1/4 in	0 in	0 in	0 in	6 1/2 in	6 1/2 in	POM ADDED
15	LEG INSET HEIGHT AT CENTER	CAO PHÓI LAI TẠI GIỮA	WV	MEASURE AT CENTER OF PANEL	ĐO TẠI GIỮA CỦA PHÓI	false	Full	1/8 in	0 in	6 1/2 in	6 1/2 in	6 in	6 in	POM ADDED. REDUCE BY 1/2"
16	LEG INSET WIDTH AT BOTTOM EDGE	RỘNG PHÓI LAI TẠI MÉP LAI	WV			false	Full	1/8 in	0 in	7 1/4 in	7 1/4 in	7 1/4 in	7 1/4 in	POM ADDED. KEEP AS SAMPLE