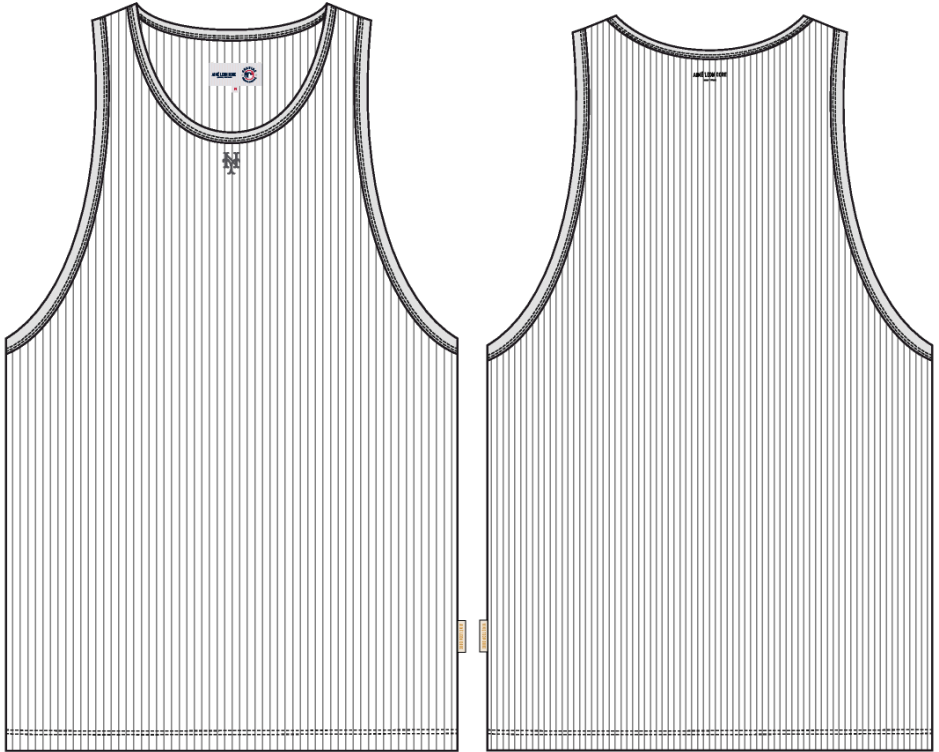
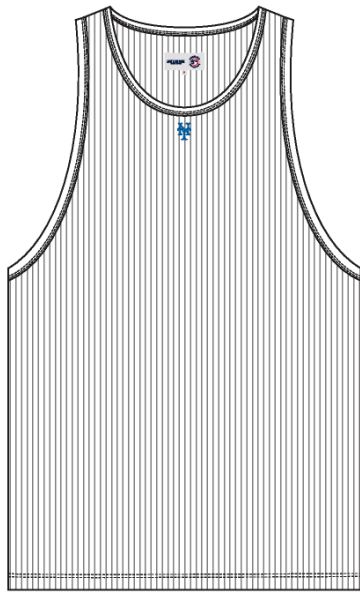


Mets Tank Top

Name	Mets Tank Top
Style No.	SS25CT035
Division	Mens
Category	Tees
Season	Spring/Summer
Year	2025
Size Scale	<div>M</div> -Sample size <div><div>XS</div><div>S</div><div>M</div><div>L</div><div>XL</div><div>XXL</div></div>
Style Status	Adopted
Factory	UN-AVAILABLE
Designer Name	Lonz
TD Name	Anastasiya
Created by/Author	11/15/2024 Anastasiya Zolotova anastasiya.zolotova@aimeleondore.com



1_B&W-1

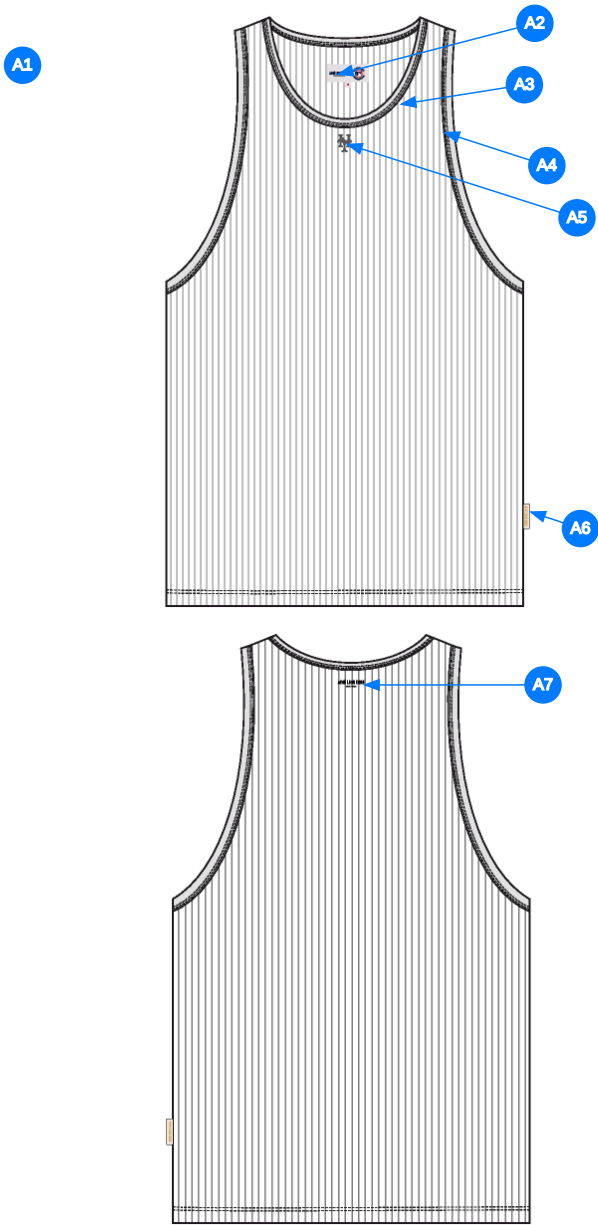


BRIGHT WHITE



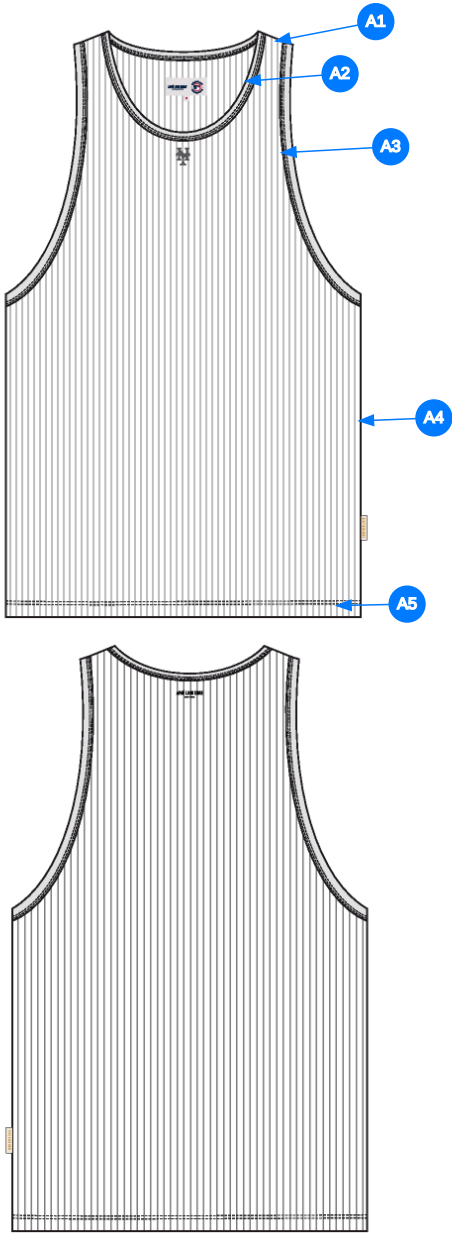
ECLIPSE

2_CLR-1



- Comments (7)
- A1 FIT: PACKAGED TANK TOP
 - A2 MLB GENUINE MERCHANDISE LABEL @ CB NECK
 - A3 JERSEY BINDING @ NECK
 - A4 JERSEY BINDING @ ARMHOLE
 - A5 ARTWORK @ CF - SEE FOLLOWING PAGES FOR ARTWORK DETAILS
 - A6 ALD WOVEN LABEL @ SIDE SEAM
 - A7 ARTWORK @ CB - SEE FOLLOWING PAGES FOR ARTWORK DETAILS

3_Construction Details-1



Comments (5)

- A1 CLEAN SEAM FINISH @ SHOULDER
- A2 1/8" DN TS @ NECK
- A3 1/8" DN TS @ ARMHOLE
- A4 CLEAN SEAM FINISH @ SIDE SEAMS
- A5 1/4" DN TS @ BOTTOM HEM - TURN BACK W/ COVERLOCK

4_Stitching Details-1

Sample Size: M

POINT OF MEASURE	HOW TO MEASURE	CRITICAL	TYPE	TOLERANCE	XS	S	M	L	XL	XXL
Front Body Length	HPS to bottom edge	true	Full	1/2 in	-7/8 in	-7/8 in	28 1/4 in	7/8 in	7/8 in	7/8 in
Back Body Length	CB neck seam to bottom edge	true	Full	1/2 in	-7/8 in	-7/8 in	25 7/8 in	7/8 in	7/8 in	7/8 in
Shoulder Slope	Shoulder point perpendicular to HPS	false	Full	1/4 in	0 in	0 in	1/2 in	0 in	0 in	0 in
Strap Width	Edge to Edge	true	Full	1/8 in	0 in	0 in	2 1/8 in	0 in	0 in	0 in
Front Neck Drop	HPS to Neck Top Edge	false	Full	1/8 in	-1/8 in	-1/8 in	6 in	1/8 in	1/8 in	1/8 in
Back Neck Drop	HPS to Neck Top Edge	false	Full	1/8 in	0 in	0 in	1 1/2 in	0 in	0 in	0 in
Back Neck Width	At HPS Edge to Edge	false	Full	1/4 in	-1/4 in	-1/4 in	6 1/4 in	1/4 in	1/4 in	1/4 in
Binding Width		false	Full	1/8 in	0 in	0 in	7/16 in	0 in	0 in	0 in
Across Shoulder	Edge to edge	false	Half	3/8 in	-1/4 in	-1/4 in	10 1/4 in	1/4 in	1/2 in	1/2 in
Across Front/Across Back Position from HPS		true	Full	0 in	-1/4 in	-1/4 in	7 in	1/4 in	1/4 in	1/4 in
Across Front Edge to Edge	Straight Down from HPS, Edge to Edge	true	Full	1/4 in	-1/4 in	-1/4 in	9 1/4 in	1/4 in	1/2 in	1/2 in
Across Back Edge to Edge	Straight Down from HPS, Edge to Edge	false	Full	1/4 in	-1/4 in	-1/4 in	9 1/4 in	1/4 in	1/2 in	1/2 in
Chest Width	1" Below armhole- edge to edge	true	Half	1/2 in	-1 in	-1 in	12 1/4 in	1 in	1 1/2 in	1 1/2 in
Bottom Opening Width- At Edge	At bottom edge	true	Half	1/2 in	-1 in	-1 in	12 1/4 in	1 in	1 1/2 in	1 1/2 in
Bottom Hem Height	Bottom edge to stitch line or trim seam	false	Full	1/8 in	0 in	0 in	7/8 in	0 in	0 in	0 in
Armhole Drop	Below HPS - To Top Edge	false	Full	1/4 in	-3/8 in	-3/8 in	11 1/4 in	3/8 in	1/2 in	1/2 in
CF Artwork Placement From Top Edge of Neck to Top Edge of Artwork		false	Full	1/8 in	-1/8 in	-1/8 in	1 5/8 in	1/8 in	1/8 in	1/8 in
CB Artwork Placement From Top Edge of Neck to Top Edge of Artwork	From CB neck seam to top Artwork	false	Full	1/8 in	0 in	0 in	1 in	0 in	0 in	0 in

Sample Size: M

POINT OF MEASURE	HOW TO MEASURE	CRITICAL	TYPE	TOLERANCE	XS	S	M	L	XL	XXL
Front Body Length	HPS to bottom edge	true	Full	1/2 in	26 1/2 in	27 3/8 in	28 1/4 in	29 1/8 in	30 in	30 7/8 in
Back Body Length	CB neck seam to bottom edge	true	Full	1/2 in	24 1/8 in	25 in	25 7/8 in	26 3/4 in	27 5/8 in	28 1/2 in
Shoulder Slope	Shoulder point perpendicular to HPS	false	Full	1/4 in	1/2 in	1/2 in	1/2 in	1/2 in	1/2 in	1/2 in
Strap Width	Edge to Edge	true	Full	1/8 in	2 1/8 in	2 1/8 in	2 1/8 in	2 1/8 in	2 1/8 in	2 1/8 in
Front Neck Drop	HPS to Neck Top Edge	false	Full	1/8 in	5 3/4 in	5 7/8 in	6 in	6 1/8 in	6 1/4 in	6 3/8 in
Back Neck Drop	HPS to Neck Top Edge	false	Full	1/8 in	1 1/2 in	1 1/2 in	1 1/2 in	1 1/2 in	1 1/2 in	1 1/2 in
Back Neck Width	At HPS Edge to Edge	false	Full	1/4 in	5 3/4 in	6 in	6 1/4 in	6 1/2 in	6 3/4 in	7 in
Binding Width		false	Full	1/8 in	7/16 in	7/16 in	7/16 in	7/16 in	7/16 in	7/16 in
Across Shoulder	Edge to edge	false	Half	3/8 in	9 3/4 in	10 in	10 1/4 in	10 1/2 in	11 in	11 1/2 in
Across Front/Across Back Position from HPS		true	Full	0 in	6 1/2 in	6 3/4 in	7 in	7 1/4 in	7 1/2 in	7 3/4 in
Across Front Edge to Edge	Straight Down from HPS, Edge to Edge	true	Full	1/4 in	8 3/4 in	9 in	9 1/4 in	9 1/2 in	10 in	10 1/2 in
Across Back Edge to Edge	Straight Down from HPS, Edge to Edge	false	Full	1/4 in	8 3/4 in	9 in	9 1/4 in	9 1/2 in	10 in	10 1/2 in
Chest Width	1" Below armhole- edge to edge	true	Half	1/2 in	10 1/4 in	11 1/4 in	12 1/4 in	13 1/4 in	14 3/4 in	16 1/4 in
Bottom Opening Width- At Edge	At bottom edge	true	Half	1/2 in	10 1/4 in	11 1/4 in	12 1/4 in	13 1/4 in	14 3/4 in	16 1/4 in
Bottom Hem Height	Bottom edge to stitch line or trim seam	false	Full	1/8 in	7/8 in	7/8 in	7/8 in	7/8 in	7/8 in	7/8 in
Armhole Drop	Below HPS - To Top Edge	false	Full	1/4 in	10 1/2 in	10 7/8 in	11 1/4 in	11 5/8 in	12 1/8 in	12 5/8 in
CF Artwork Placement From Top Edge of Neck to Top Edge of Artwork		false	Full	1/8 in	1 3/8 in	1 1/2 in	1 5/8 in	1 3/4 in	1 7/8 in	2 in
CB Artwork Placement From Top Edge of Neck to Top Edge of Artwork	From CB neck seam to top Artwork	false	Full	1/8 in	1 in	1 in	1 in	1 in	1 in	1 in

Measured Size: M

POINT OF MEASURE	HOW TO MEASURE	CRITICAL	TYPE	TOLERANCE	EXPECTED	PPS - RCVD	VARIANCE	ADJUST BY +/-	REVISED SPEC	MEASUREMENT NOTES
Front Body Length	HPS to bottom edge	true	Full	1/2 in	28 1/4 in	28 1/4 in	0 in	0 in	28 1/4 in	
Back Body Length	CB neck seam to bottom edge	true	Full	1/2 in	25 7/8 in	26 1/8 in	1/4 in	0 in	25 7/8 in	
Shoulder Slope	Shoulder point perpendicular to HPS	false	Full	1/4 in	1/2 in	1/2 in	0 in	0 in	1/2 in	
Strap Width	Edge to Edge	true	Full	1/8 in	2 1/8 in	2 1/8 in	0 in	0 in	2 1/8 in	
Front Neck Drop	HPS to Neck Top Edge	false	Full	1/8 in	6 1/4 in	6 in	-1/4 in	-1/4 in	6 in	Keep As Sample
Back Neck Drop	HPS to Neck Top Edge	false	Full	1/8 in	1 3/4 in	1 3/4 in	0 in	-1/4 in	1 1/2 in	Reduce
Back Neck Width	At HPS Edge to Edge	false	Full	1/4 in	6 1/4 in	6 1/4 in	0 in	0 in	6 1/4 in	
Binding Width		false	Full	1/8 in	7/16 in	7/16 in	0 in	0 in	7/16 in	
Across Shoulder	Edge to edge	false	Half	3/8 in	10 1/4 in	10 1/2 in	1/4 in	0 in	10 1/4 in	
Across Front/Across Back Position from HPS		true	Full	0 in	7 in	7 in	0 in	0 in	7 in	
Across Front Edge to Edge	Straight Down from HPS, Edge to Edge	true	Full	1/4 in	9 1/4 in	9 1/4 in	0 in	0 in	9 1/4 in	
Across Back Edge to Edge	Straight Down from HPS, Edge to Edge	false	Full	1/4 in	9 1/4 in	9 1/8 in	-1/8 in	0 in	9 1/4 in	
Chest Width	1" Below armhole- edge to edge	true	Half	1/2 in	12 1/4 in	12 1/4 in	0 in	0 in	12 1/4 in	
Bottom Opening Width- At Edge	At bottom edge	true	Half	1/2 in	12 1/4 in	12 1/4 in	0 in	0 in	12 1/4 in	
Bottom Hem Height	Bottom edge to stitch line or trim seam	false	Full	1/8 in	7/8 in	7/8 in	0 in	0 in	7/8 in	
Armhole Drop	Below HPS - To Top Edge	false	Full	1/4 in	11 1/4 in	11 1/4 in	0 in	0 in	11 1/4 in	
CF Artwork Placement From Top Edge of Neck to Top Edge of Artwork		false	Full	1/8 in	1 3/4 in	1 3/4 in	0 in	-1/8 in	1 5/8 in	Follow Reviserd
CB Artwork Placement From Top Edge of Neck to Top Edge of Artwork	From CB neck seam to top Artwork	false	Full	1/8 in	3/4 in	3/4 in	0 in	1/4 in	1 in	Move Down

PPS - Anastasiya Zolotova

CREATED ON NOV 15, 2024 7:00 PM
PPS: SIZE:M, CREATED AT: 11-05-2024

SS25CT035 Mets Tank Top

FITTING DATE: 11/12/24

MODEL/ATTENDEES: Jessica,Anthony, Cal,Lonz,Wes,Megan,Jeni,Anastasiya

STATUS: PPS Approved to TOP MẪU PPS ĐƯỢC APPROVED LÊN TOP

Fit Comments:

- 1. Keep front neck drop as sample.
- 2. Reduce back neck drop to 1 1/2".
- 3. Please follow revised measurement for CF artwork to be 1 5/8" from top edge to top edge of artwork.
- 4. Please follow revised measurement for CB artwork to be 1" from top edge to top edge of artwork.

FIT COMMENT

- 1. GIỮ HẠ CỔ TRƯỚC NHƯ MẪU
- 2. GIẢM HẠ CỔ SAU ĐÊN 1 1/2"
- 3. THEO THAY ĐỔI THÔNG SỐ ARTWORK THÂN TRƯỚC LÀ 1 5/8" TỪ ĐẦU CẠNH ĐẾN ĐẦU CẠNH ARTWORK
- 4. THEO THAY ĐỔI THÔNG SỐ ARTWORK THÂN SAU LÀ 1" TỪ ĐẦU CẠNH ĐẾN ĐẦU CẠNH ARTWORK



Screen Shot 2024-11-15 at 1.35.47 PM.jpg