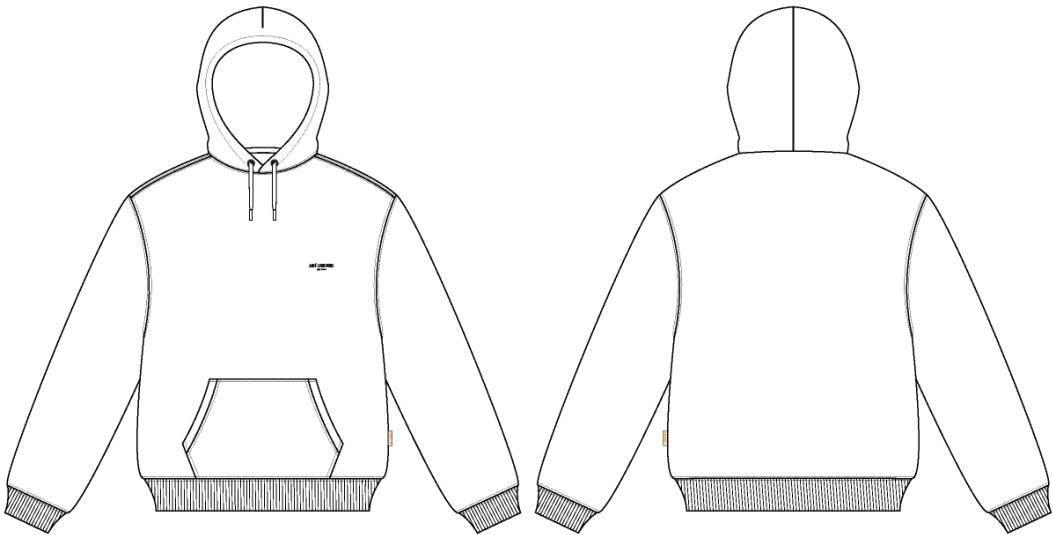


Seasonal Micro Din Hoodie

Name	Seasonal Micro Din Hoodie
Style No.	FW25CH012
Division	Mens
Category	Hoodies
Season	Fall/Winter
Year	2025
Size Scale	M -Sample size
	XS S M L XL XXL
Style Status	Adopted
Factory	UN-AVAILABLE
Designer Name	Wes
TD Name	Anastasiya
Created by/Author	2/19/2025
	Anastasiya Zolotova
	anastasiya.zolotova@aimeleondore.com



1_B&W-1



PINE GROVE



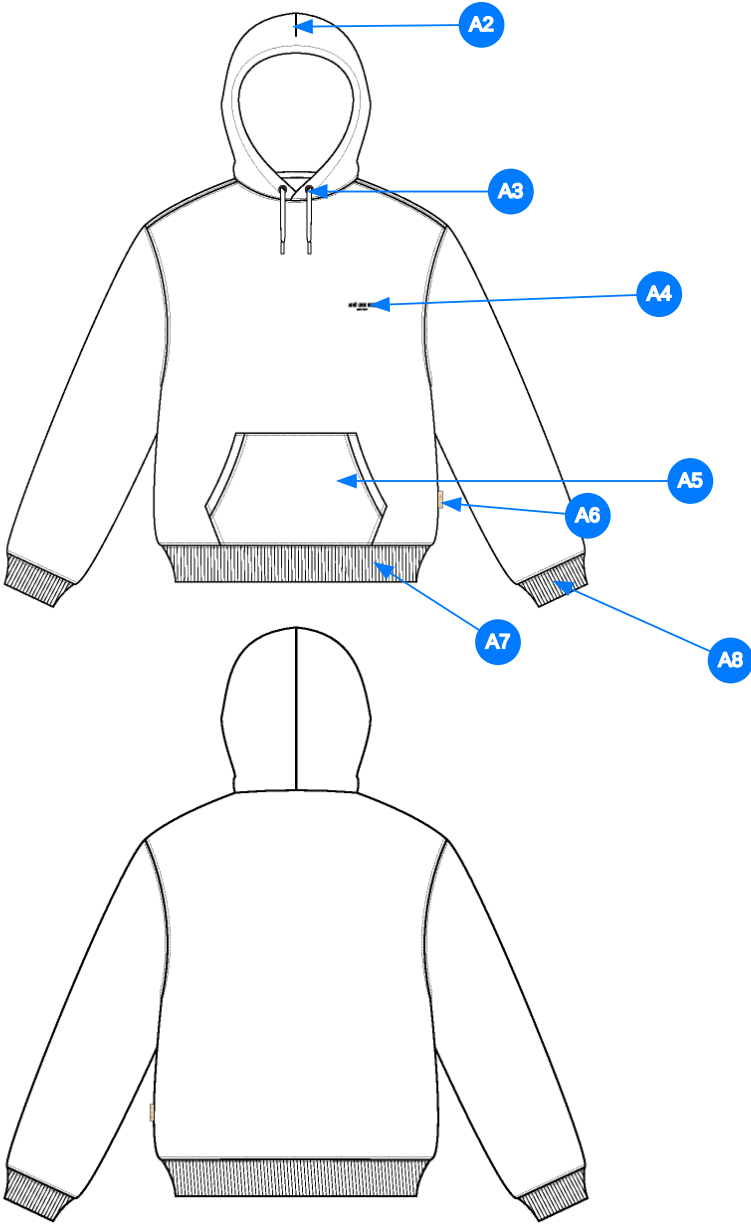
NAVY BLAZER



CHARCOAL

2_CLR-1

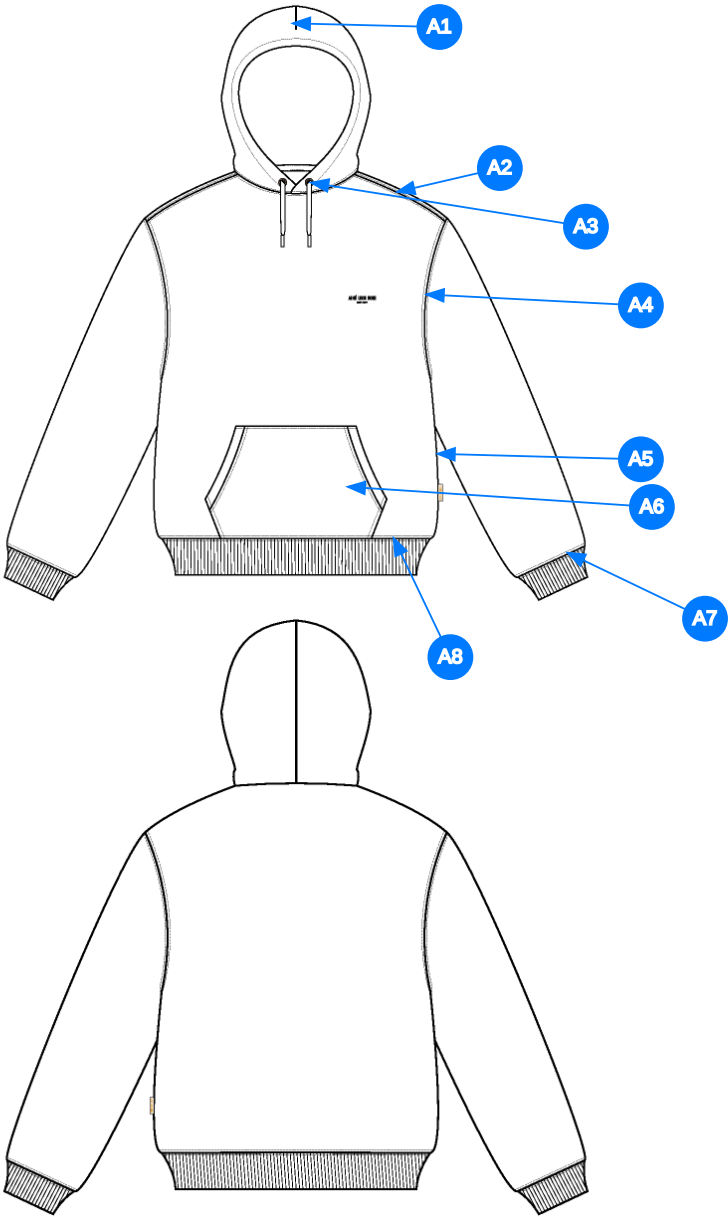
A1



Comments (8)

- A1 FIT: REGULAR FIT BLOCK
- A2 DART @ HOOD
- A3 THREAD EYELETS W/ DRAWCORD @ HOOD - FLAT BRAIDED DRAWCORDS
- A4 ARTWORK @ WL CHEST - SEE SEPARATE ARTWORK FILE FOR DETAILS
- A5 KANGAROO POCKET @ FRONT BODY
- A6 ALD WOVEN LABEL @ SIDE SEAM
- A7 2X2 RIB DOUBLED @ SLEEVE CUFFS
- A8 2X2 RIB DOUBLED @ SLEEVE CUFFS

3_Construction Details-1



Comments (8)

- A1 DART @ HOOD
- A2 STRADDLE STITCH @ SHOULDER SEAM
- A3 STRADDLE STITCH @ NECK
- A4 STRADDLE STITCH @ ARMHOLE
- A5 CLEAN SEAM FINISH @ SIDE SEAM
- A6 1/8" SN TS @ POCKET - APPLIES TO TOP AND BOTTOM EDGES - 1/4" DN TS @ OPENINGS
- A7 STRADDLE STITCH @ SLEEVE CUFF
- A8 STRADDLE STITCH @ BOTTOM HEM

4_Stitching Details-1

Sample Size: M

POINT OF MEASURE	HOW TO MEASURE	CRITICAL	TYPE	TOLERANCE	M
Front Body Length	HPS to bottom edge	true	Full	1/4 in	27 in
Back Body Length	CB neck seam to bottom edge	true	Full	1/4 in	26 1/4 in
Shoulder Seam Forward	HPS to seam	false	Full	1/8 in	1/2 in
Shoulder Slope	Shoulder point perpendicular to HPS	false	Full	1/4 in	2 1/2 in
Front Neck Drop	HPS to neck seam	false	Full	1/8 in	3 1/2 in
Back Neck Drop	HPS to neck seam	false	Full	1/8 in	3/4 in
Back Neck Width	Seam to seam at back neck, at HPS point	false	Full	1/4 in	9 in
Minimum Neck Stretch		true	Half	0 in	11 1/2 in
Across Shoulder Width- Seam to seam	Seam to Seam	false	Full	1/4 in	22 1/2 in
Across Front/Across Back Position from HPS		true	Full	0 in	7 in
Across Front	Down from HPS, Seam to seam	false	Half	1/4 in	20 1/2 in
Across Back	Down from HPS, Seam to Seam	false	Half	1/4 in	21 in
Chest Width	1" Below armhole- edge to edge	true	Half	1/4 in	22 1/2 in
Bottom Opening 2" Above Rib Knit Seam	At bottom edge	true	Half	1/4 in	20 in
Bottom Opening Width- At Seam	Straight with seam relaxed	true	Half	1/4 in	19 1/2 in
Bottom Opening Width- At Edge	At bottom edge	true	Half	1/4 in	17 1/2 in
Bottom Hem Height	Bottom edge to stitch line or trim seam	false	Full	1/8 in	2 1/2 in
Sleeve Length from CB Neck	3-point measure from CB Neck to shoulder point to sleeve edge	true	Full	1/2 in	35 in
Armhole Drop	Below HPS - measure perpendicular	false	Full	1/4 in	13 in
Bicep Width	1" below armhole- edge to edge	false	Half	1/4 in	10 1/4 in
Forearm Width	9" up from sleeve cuff edge	false	Half	1/4 in	7 1/2 in
Sleeve Opening Width 1" Above Rib Knit Seam	At edge	false	Half	1/4 in	5 1/4 in
Sleeve Opening Width- At Seam	Width at Seam	false	Half	1/4 in	4 3/4 in
Sleeve Opening Width- At Edge	At edge	false	Half	1/4 in	3 3/4 in
Sleeve Cuff Height	Cuff edge to seam	false	Full	1/8 in	2 1/2 in
Hood Height at CF	From neck seam to top edge	false	Half	3/8 in	15 in
Hood Height at HPS		false	Full	1/8 in	13 1/2 in
Hood Width 6" Below Top Edge	Straight from CF edge to CB seam- 6" down	false	Half	3/8 in	11 in
Exposed Drawcord Length		false	Full	1/2 in	10 in
Hood Tunnel Height		false	Full	1/8 in	1 in
Hood Overlap Width at CF Neck		false	Full	1/8 in	1 in
Drawcord Opening Placement up from Neck Seam		false	Full	1/8 in	1 1/2 in
Kangaroo Pocket Height At Center	Height at center	false	Full	1/4 in	8 1/2 in
Kangaroo Pocket Height at Sides		false	Full	1/8 in	3 in
Kangaroo Pocket Width at Top Edge	Width at top edge	false	Full	1/4 in	9 1/2 in
Kangaroo Pocket Width at Bottom	Width at Bottom Edge - Extended	false	Full	1/4 in	12 3/4 in
Kangaroo Pocket Opening		false	Full	1/8 in	6 1/4 in
Kangaroo Pocket Hem Height	Edge to stitch line	false	Full	1/8 in	3/4 in
WL Chest Artwork Placement from HPS to Top Edge		true	Full	1/8 in	8 in
WL Chest Artwork Placement Out from CF Line		false	Full	1/8 in	2 3/4 in
Loop Label Placement at Sideseam	Bottom edge to bottom of loop label, at the WL side seam	false	Full	1/8 in	7 in

Development Notes - Anastasiya Zolotova

CREATED ON FEB 10, 2025 8:45 PM

FW25CH012 Seasonal Micro Din Hoodie
Date: 2/10/25
Status: Direct to PPS
TD: Anastasiya

Fit: Please follow NOSCH002 Micro Din Logo Hoodie.