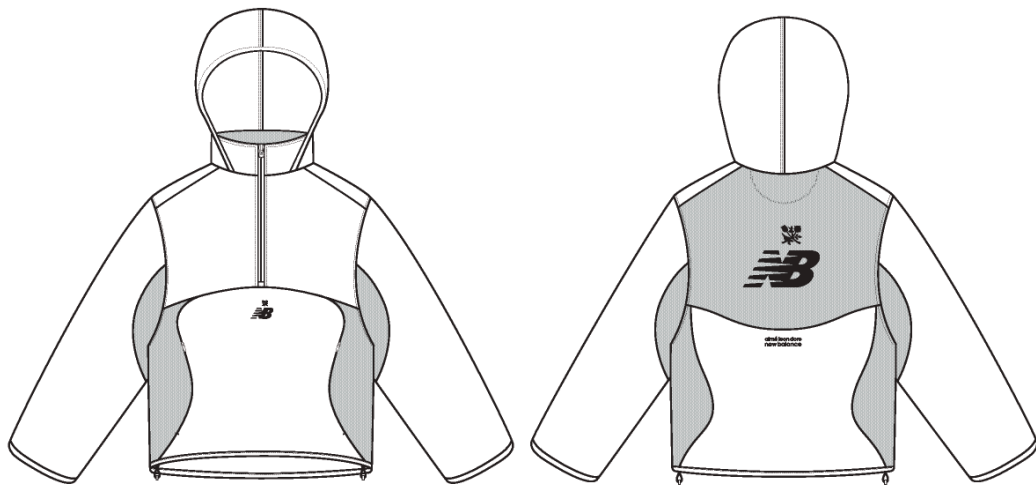


NB RC56 Nylon Pullover

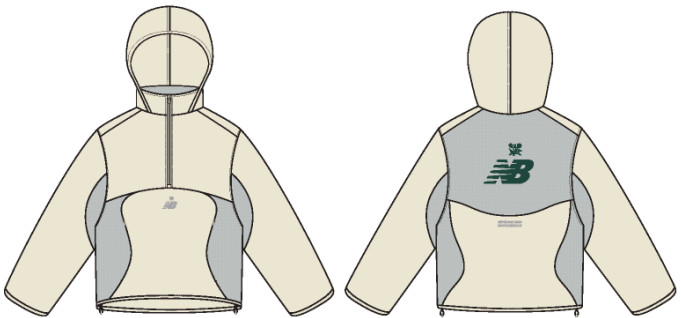
Name	NB RC56 Nylon Pullover
Style No.	NB25WJ000
Division	Mens
Category	Outerwear
Season	Spring/Summer
Year	2025
Size Scale	<div>M</div> -Sample size <div><div>XS</div><div>S</div><div>M</div><div>L</div><div>XL</div><div>XXL</div></div>
Style Status	Development
Factory	UN-AVAILABLE
Designer Name	Ben
Created by/Author	11/15/2024 Hyeyoung Cho hyeyoung@aimeleondore.com



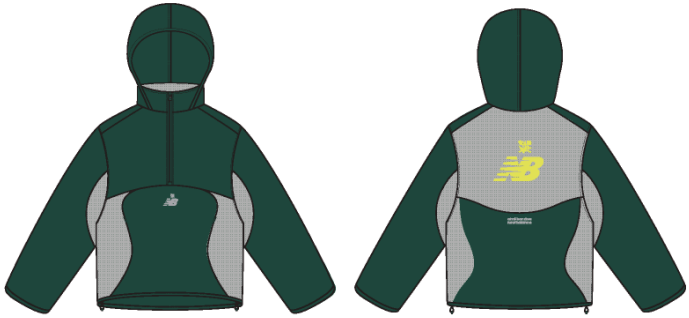
1\_B+W-1



JET BLACK

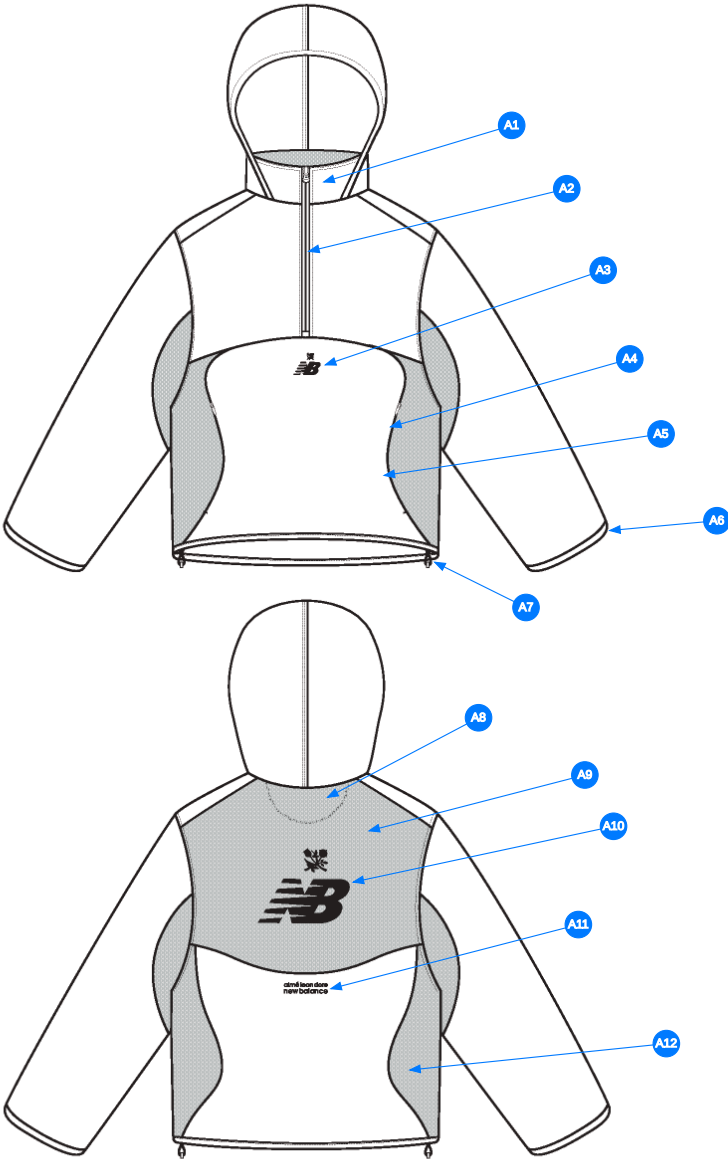


PRISTINE



PINE GROVE

2\_CLR-1



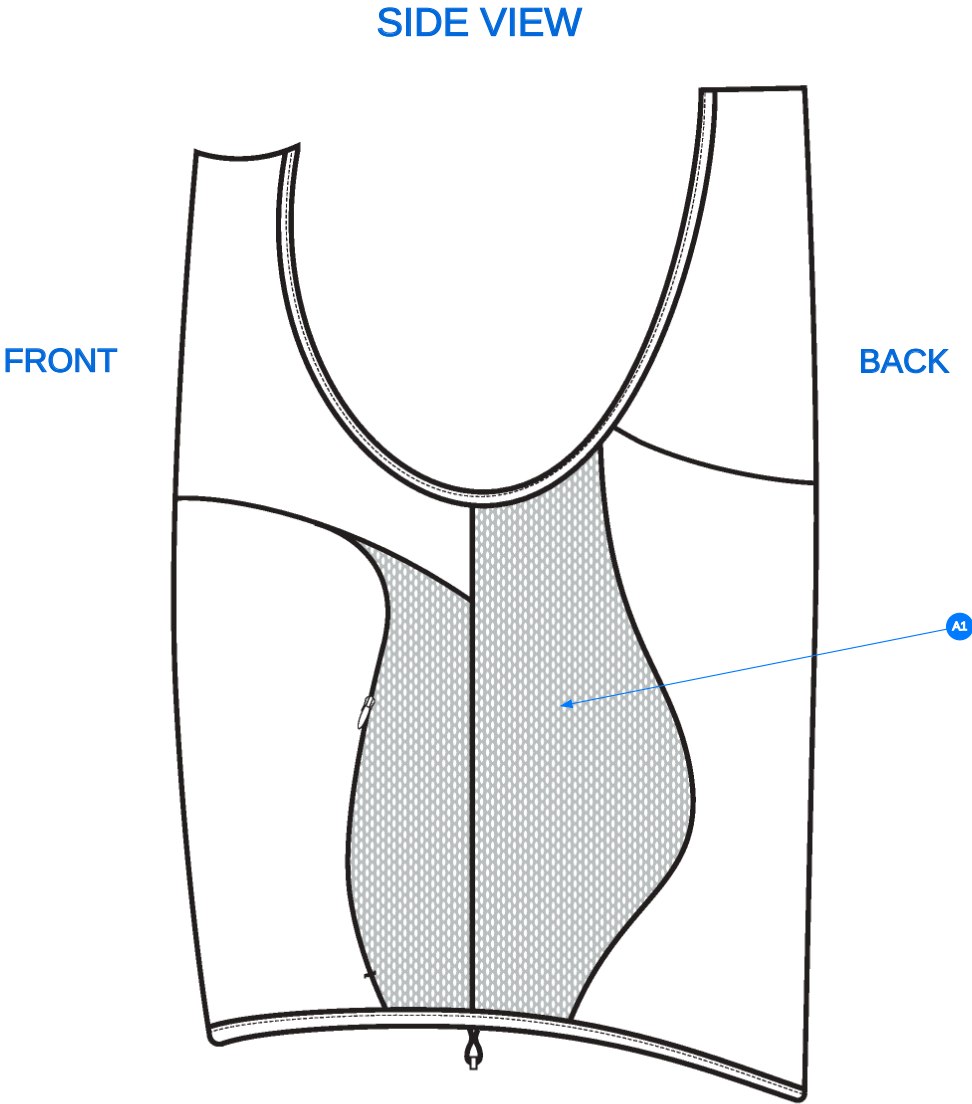
Comments (12)

- A1 PIECED ON COLLAR w/ STOWAWAY HOOD
- A2 HALF ZIP CLOSURE
- A3 PRINTED ARTWORK
- A4 SET IN MESH PANELS - MESH IS DOUBLED
- A5 ON SEAM HAND POCKETS
- A6 ELASTIC BINIDNG @ SLEEVE HEMS
- A7 BUNGEE CORD AND CORD LOCKS @ INTERIOR HEM - SEE FOLLOWING PAGES FOR CONSTRUCTION REFERENCE
- A8 HANGING HALF MOON @ BACK NECK
- A9 SET IN MESH PANEL @ BACK BODY - MESH IS DOUBLED
- A10 PRINTED ARTWORK
- A11 PRINTED ARTWORK
- A12 SET IN MESH PANELS - MESH IS DOUBLED

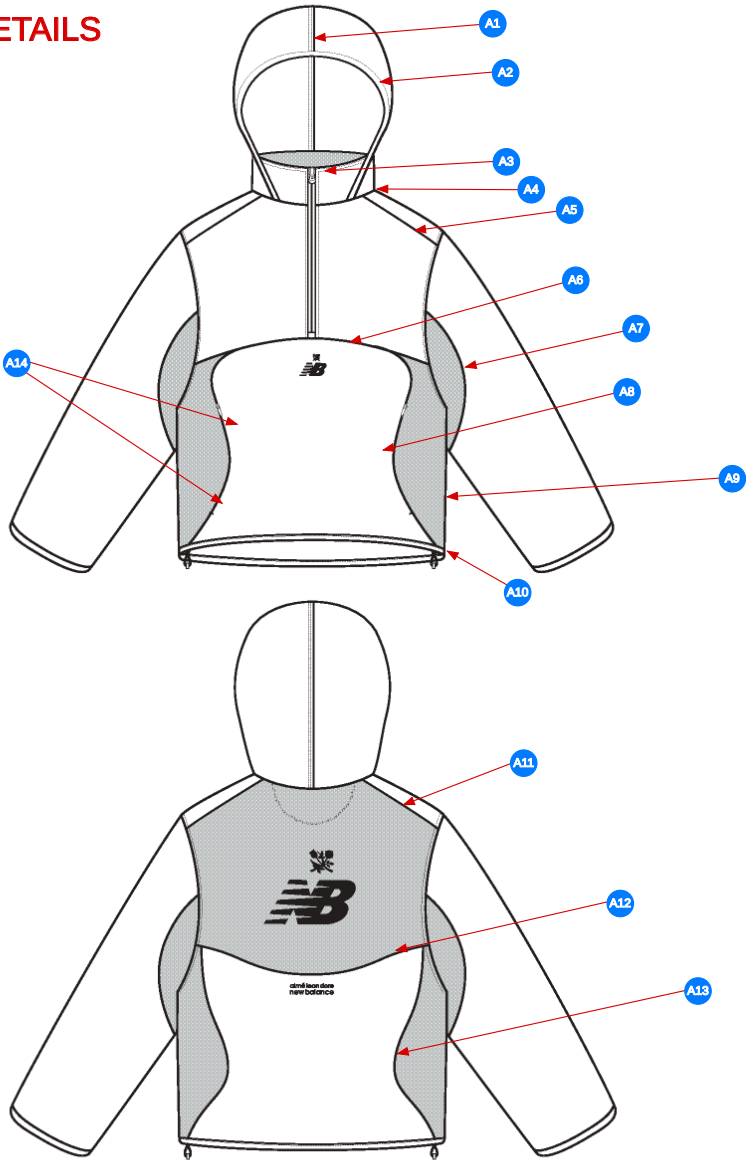
3\_CONSTRUCTION DETAILS-1

Comments (1)

A1 SET IN MESH PANEL - MESH IS DOUBLED



STITCHING DETAILS

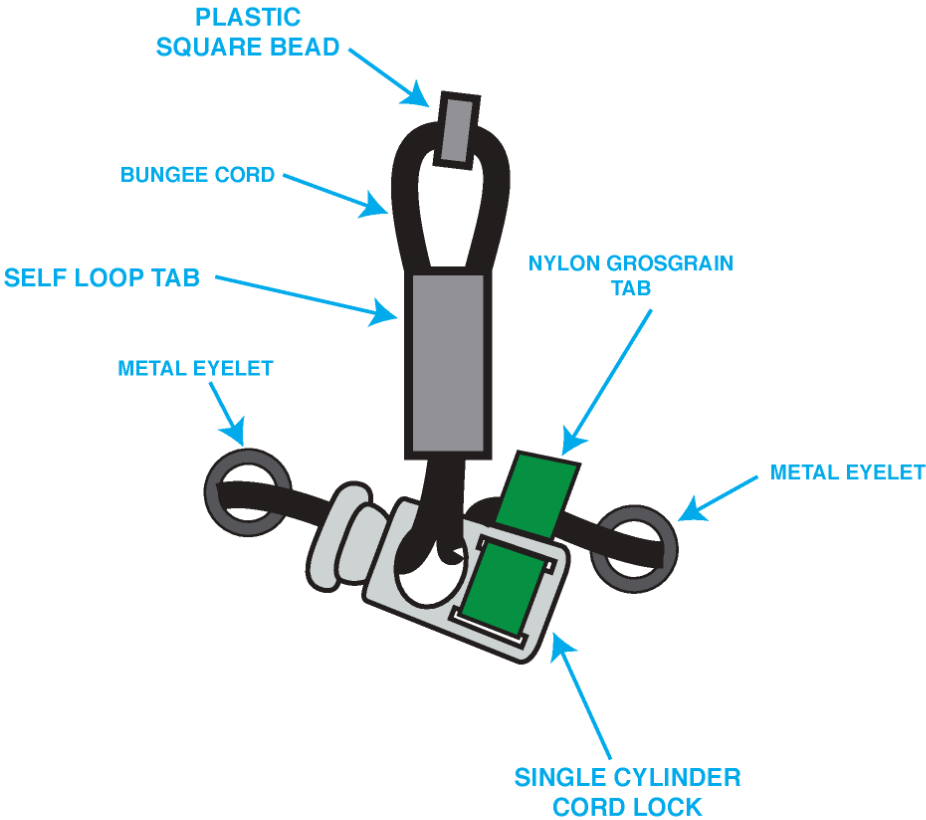


Comments (14)

- A1 1/4" DN TS @ HOOD
- A2 1/8" SN TS @ HOOD OPENING
- A3 1/4" DN TS @ TOP COLLAR EDGE
- A4 CLEAN SEAM FINISH @ NECK SEAM
- A5 CLEAN SEAM FINISH @ SHOULDER PANEL SEAM
- A6 CLEAN SEAM FINISH @ BODY SEAM
- A7 CLEAN SEAM FINISH @ ARM SEAM
- A8 CLEAN SEAM FINISH @ BODY PANEL SEAM
- A9 CLEAN SEAM FINISH @ SIDE SEAM
- A10 1/2" SN TS @ BOTTOM HEM
- A11 CLEAN SEAM FINISH @ SHOULDER PANEL SEAM
- A12 CLEAN SEAM FINISH @ BODY PANEL SEAM
- A13 CLEAN SEAM FINISH @ BODY PANEL SEAM
- A14 BARTACKS @ TOP AND BOTTOM OF ON SEAM HAND POCKET ENTRY

4\_STITCHING DETAILS-1

INTERIOR BUNGEE CONSTRUCTION



INTERIOR BUNGEE CORD CONSTRUCTION DETAILS-1

Measured Size: M

POINT OF MEASURE	HOW TO MEASURE	CRITICAL	TYPE	TOLERANCE	EXPECTED	1ST FIT - RCVD	VARIANCE	REVISED SPEC	MEASUREMENT NOTES
FRONT BODY LENGTH	FROM HPS TO BOTTOM EDGE	true	Full	1/2 in	27 in	27 1/4 in	1/4 in	27 in	BTS
BACK BODY LENGTH	FROM CB NECK SEAM TO BOTTOM EDGE	true	Full	1/2 in	27 1/2 in	27 3/4 in	1/4 in	27 1/2 in	BTS
CF ZIPPER LENGTH	FROM ZIPPER TIP TO TIP	true	Full	1/4 in	10 in	10 in	0 in	10 in	
FRONT NECK DROP	FROM HPS LEVEL STRAIGHT DOWN TO CF NECK SEAM	true	Full	1/8 in	4 1/4 in	4 1/2 in	1/4 in	4 1/4 in	RAISE BACK TO SPEC
BACK NECK DROP	FROM HPS LEVEL STRAIGHT DOWN TO CB NECK SEAM	true	Full	1/8 in	5/8 in	1/2 in	-1/8 in	5/8 in	
BACK NECK WIDTH	FROM SEAM TO SEAM AT BACK PANEL	true	Full	1/4 in	7 in	7 in	0 in	7 in	
SHOULDER SLOPE	FROM HPS LEVEL STRAIGHT DOWN TO TOP OF ARMHOLE SM	true	Full	1/8 in	2 1/4 in	2 1/4 in	0 in	2 1/4 in	
SHOULDER SEAM FORWARD	FROM HPS TO SHOUDLER SEAM AT NECK	false	Full	1/8 in	7/8 in	7/8 in	0 in	7/8 in	
ACROSS SHOULDER	FROM ARMHOLE SEAM TO SEAM AT BACK PANEL	true	Full	1/4 in	19 1/2 in	19 1/2 in	0 in	19 1/2 in	
ACROSS FRONT	FROM ARMHOLE SEAM TO SEAM, 7" BELOW HPS	true	Full	1/4 in	17 1/4 in	17 1/4 in	0 in	17 1/4 in	
ACROSS BACK	FROM ARMHOLE SEAM TO SEAM, 7" BELOW HPS	true	Full	1/4 in	18 1/2 in	18 1/2 in	0 in	18 1/2 in	
CHEST CIRCUMFERENCE	MEASURE 1" BELOW ARMHOLE	true	Full	1/2 in	48 in	48 in	0 in	48 in	
BOTTOM OPENING CIRCUMFERENCE	MEASURE AT BOTTOM HEM SEAM	true	Full	1/2 in	48 in	47 3/4 in	-1/4 in	47 in	REEUCE
ARMHOLE DROP	FROM HPS LEVEL STRAIGHT DOWN TO UNDERARM SEAM	true	Full	1/4 in	12 in	12 in	0 in	12 in	
BICEP CIRCUMFERENCE	MEASURE AT 1" BELOW ARMHOLE	true	Full	1/4 in	18 3/4 in	18 3/4 in	0 in	18 3/4 in	
FOREARM CIRCUMFERENCE	MEASURE AT 9" ABOVE SLEEVE HEM EDGE	true	Full	1/4 in	15 in	15 1/4 in	1/4 in	15 in	
SLEEVE OPENING CIRCUMFERENCE, STRETCHED	MEASURE AT SLEEVE EDGE	true	Full	1/4 in	12 1/2 in	12 1/2 in	0 in	12 in	
SLEEVE OPENING CIRCUMFERENCE, RELAXED		true	Full	1/4 in	9 1/2 in	9 1/2 in	0 in	9 in	
SLEEVE LENGTH	3PT MEAS. FROM CB NECK, ARMHOLE TO SLEEVE HEM EDGE	true	Full	1/2 in	35 1/2 in	35 1/4 in	-1/4 in	37 3/4 in	SHORTEN BY 1/2"
SLEEVE ELASTIC BINDING WIDTH		false	Full	1/8 in	1/4 in	3/8 in	1/8 in	1/4 in	
COLLAR HEIGHT AT CF/CB		false	Full	1/8 in	2 3/4 in	2 3/4 in	0 in	2 3/4 in	
COLLAR LENGTH ALONG OUTER EDGE		false	Full	1/4 in	19 3/4 in	19 3/4 in	0 in	19 3/4 in	
HOOD HEIGHT AT OPENING, MEASURED FROM ZIPPER OPENING		false	Full	1/4 in	13 3/4 in	13 3/4 in	0 in	14 1/4 in	INCREASE BY 1/2"
HOOD WIDTH 6" BELOW TOP EDGE		false	Half	1/4 in	10 1/4 in	10 in	-1/4 in	10 1/4 in	
FRONT HORIZONTAL CUT SEAM POSITION FROM HPS AT CF	MEASURE AT CF	false	Full	1/4 in	11 1/2 in	11 3/4 in	1/4 in	11 1/2 in	
FRONT ONSEAM POCKET POSITION ABOVE BOTTOM HEM EDGE	MEASURE ALONG SEAM	false	Full	1/4 in	3 1/2 in	3 1/2 in	0 in	3 1/2 in	
FRONT ONSEAM POCKET ZIPPER LENGTH		false	Full	1/4 in	6 1/4 in	6 1/4 in	0 in	6 1/4 in	
BACK CUT SEAM POSITION FROM CB NECK SEAM		false	Full	1/4 in	12 1/2 in	12 1/2 in	0 in	12 1/2 in	



FRONT ARTWORK POSITION BELOW FRONT CUT SEAM		false	Full	1/16 in	0 in	1 1/8 in	1 1/8 in	1/2 in	MOVE UP
BACK ARTWORK POSITION BELOW BACK CUT SEAM		false	Full	1/16 in	0 in	1 1/4 in	1 1/4 in	3/4 in	MOVE UP
BACK MESH ARTWORK POSITION ABOVE BACK CUT SEAM		false	Full	1/8 in	0 in	3 in	3 in	3 in	KEEP

## 1st Fit - Hyeyoung Cho

CREATED ON NOV 13, 2024 4:11 PM

1ST FIT: SIZE:M, CREATED AT: 11-12-2024

Date : 11/13/24

TD : Hyeyoung Cho

Status : Submit PPS

Fit :

1. Shorten front and back body length back to spec.
2. Front panel is pulling at below CF neck area.
  - a. Increase the front panel neck width matching to the back neck width. See sample marking and diagram.
  - b. Raise the front neck drop back to spec.
  - c. Adjust the collar neck seam length accordingly.
3. Shorten the sleeve length by 1/2"
4. Reduce the bottom opening to 47" by reducing evenly from all side seams.
5. Increase the hood height by 1/2" at opening to 0" at CB. See sample marking.
6. Bring all other measurements to requested spec.

Construction :

1. Remove the ALD-COO-XXX label from the side seam, and move to wearer's left side interior seam as indicated on the sample. Center the label at the pocket opening.

Design :

1. Back mesh artwork layout has been updated. See sample marking. PD will send the revised artwork.
2. Back artwork on mesh panel should be placed on the inner mesh panel, not on the top mesh panel.
3. Raise the front artwork position to 1/2" below the front cut seam.
4. Raise the back artwork position by 1/2".



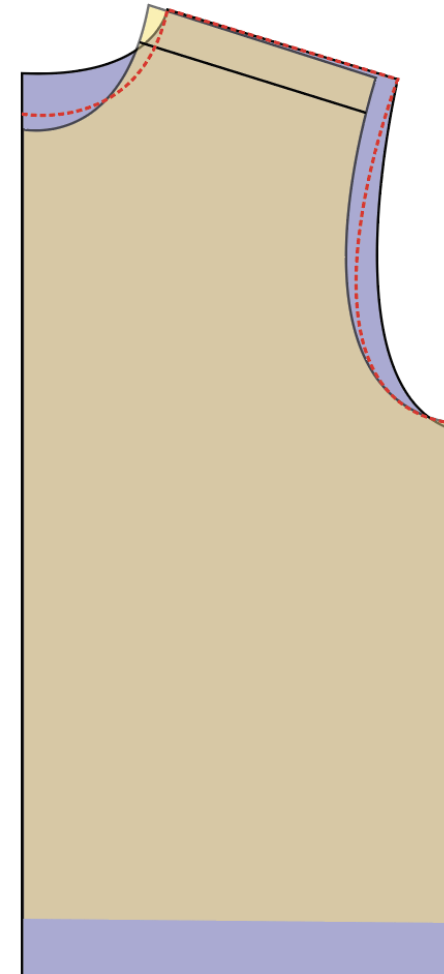
Screenshot 2024-11-13 at 10.10.38 AM.jpg

Front panel neck width is too narrow for the back neck width, creating pulling lines across neck area.

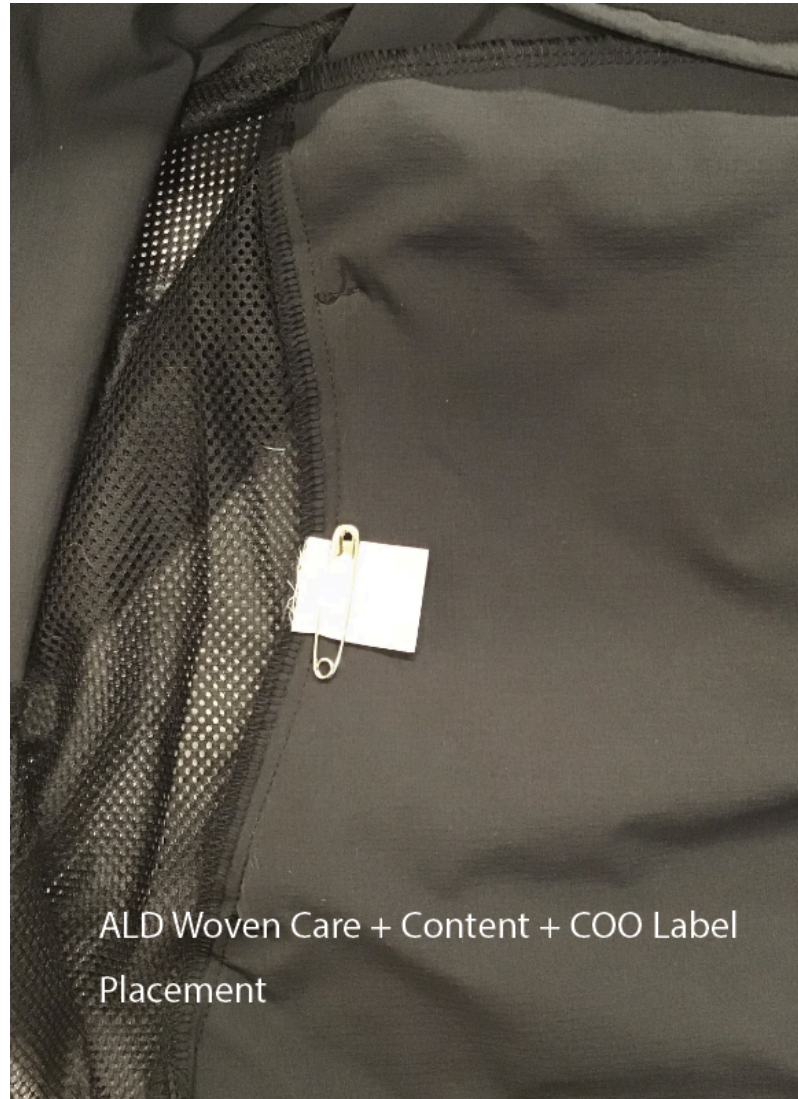
Front neck drop sits too low, pulling up the front body.

-Increase the front panel neck width : Please review pattern and increase the front neck width by about 1/4"~3/8".

-Raise the front neck drop by 1/4" back to spec.



Screenshot 2024-11-13 at 10.52.53 AM.jpg



ALD Woven Care + Content + COO Label  
Placement

Screenshot 2024-11-13 at 11.27.29 AM.jpg