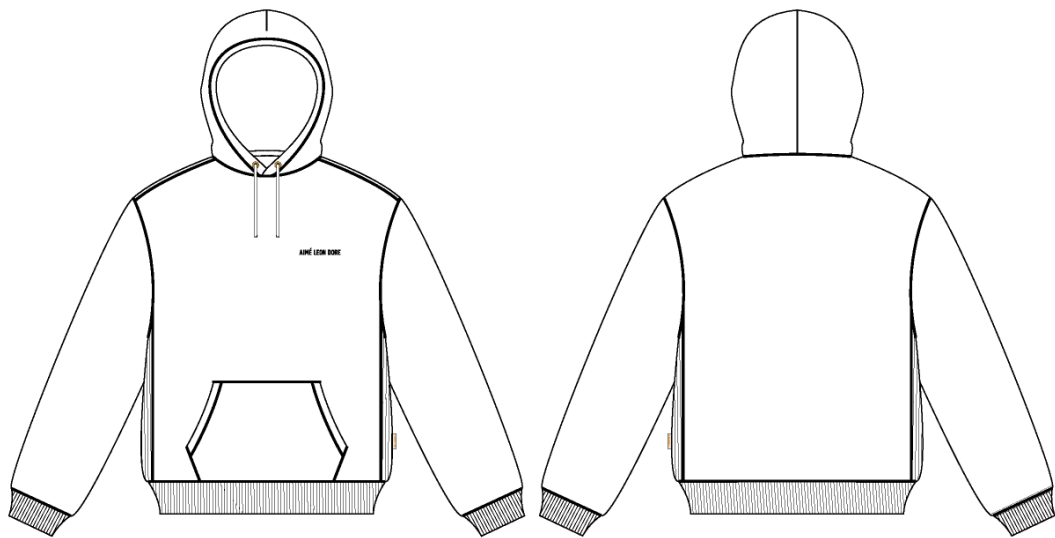


Tonal Logo Hoodie

Name	Tonal Logo Hoodie
Style No.	NOSCH003
Division	Mens
Category	Sweatshirts
Season	Spring/Summer
Year	2025
Size Scale	<div>M</div> -Sample size <div><div>XS</div><div>S</div><div>M</div><div>L</div><div>XL</div><div>XXL</div></div>
Style Status	Adopted
Factory	UN-AVAILABLE
Designer Name	Lonz
TD Name	Anastasiya
Created by/Author	9/27/2024 Anastasiya Zolotova anastasiya.zolotova@aimeleondore.com



1_B&W-1



JET BLACK

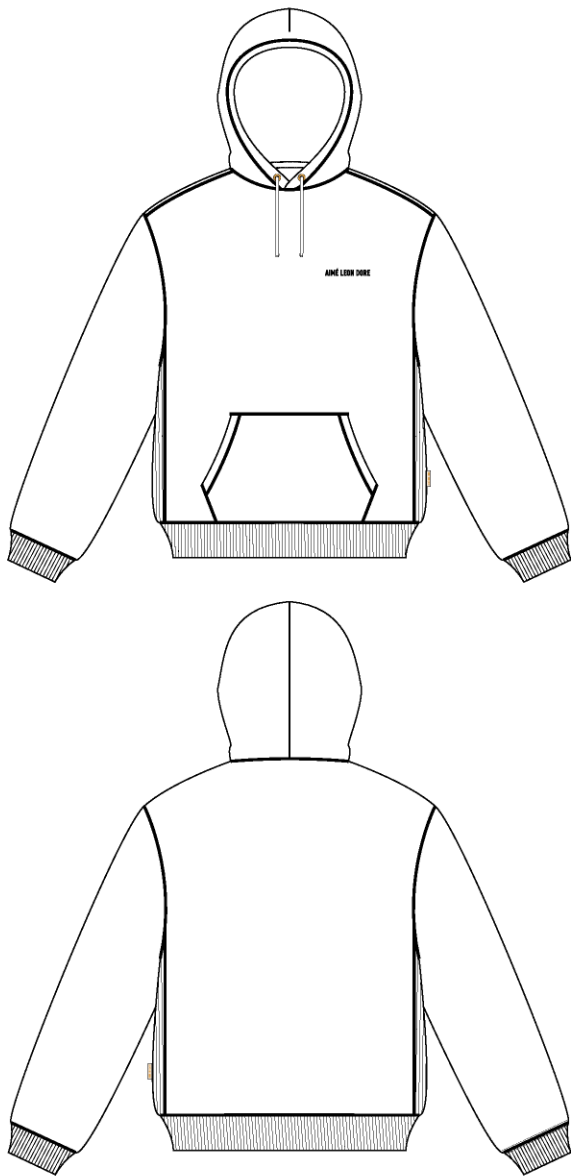


EVENING BLUE



OATMEAL

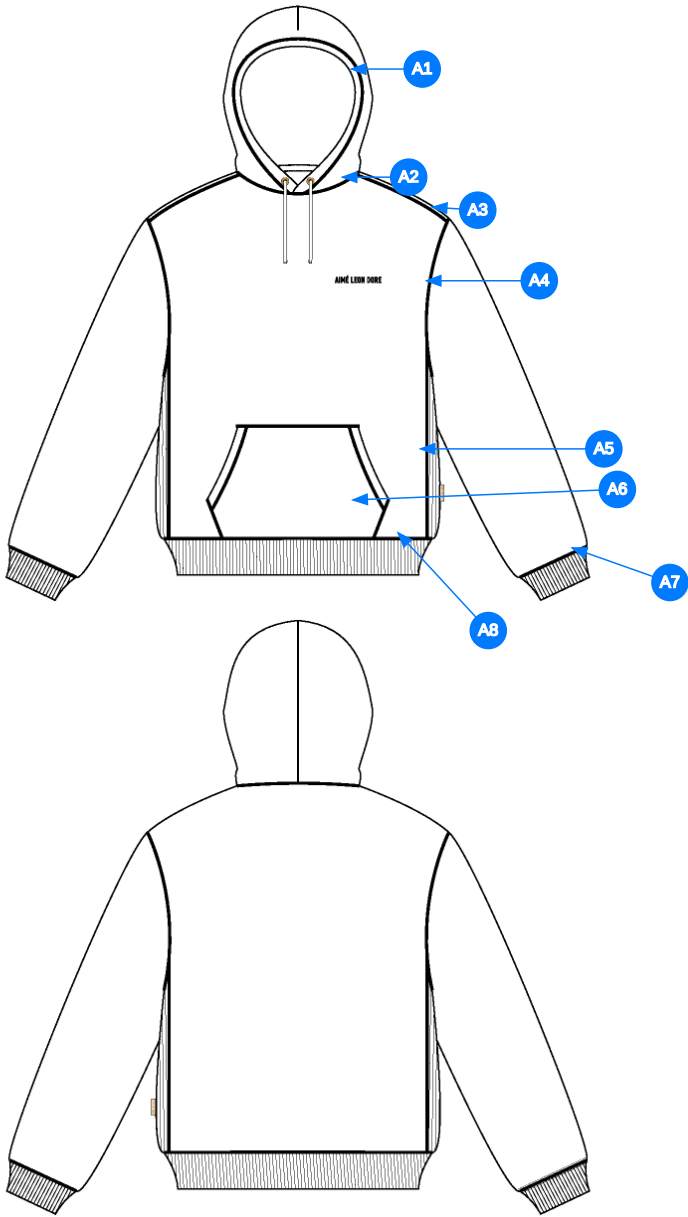
2_CLR-1



4_Stitching Details-1

Comments (9)

- A1 FIT: DROP SHOULDER
- A2 DART @ HOOD
- A3 ALD METAL EYELETS W/ DRAWCORD @ HOOD - FLAT
BRAIDED DRAWCORDS W/ TURNBACK
- A4 EMBROIDERED ARTWORK @ WL CHEST
- A5 RIB @ SIDE SEAM - RIB DOUBLED
- A6 KANGAROO POCKET @ FRONT BODY
- A7 ALD WOVEN LABEL @ SIDE SEAM
- A8 2X2 RIB DOUBLED @ SLEEVE CUFFS
- A9 2X2 RIB DOUBLED @ BOTTOM HEM



Comments (8)

- A1 COVERLOCK STITCH @ HOOD
- A2 COVERLOCK STITCH @ NECK
- A3 COVERLOCK STITCH @ SHOULDER
- A4 COVERLOCK STITCH @ ARMHOLE
- A5 COVERLOCK STITCH @ SET IN PANEL
- A6 COVERLOCK STITCH @ POCKET - APPLIES TO TOP & BOTTOM EDGES, AND OPENING
- A7 COVERLOCK STITCH @ SLEEVE CUFFS
- A8 COVERLOCK STITCH @ BOTTOM HEM

3_Construction Details-1

Measured Size: M

POINT OF MEASURE	HOW TO MEASURE	CRITICAL	TYPE	TOLERANCE	EXPECTED	1ST FIT - RCVD	VARIANCE	ADJUST BY +/-	REVISED SPEC	MEASUREMENT NOTES
Front Body Length	HPS to bottom edge	true	Full	1/4 in	27 in	27 in	0 in	0 in	27 in	
Back Body Length	CB neck seam to bottom edge	true	Full	1/4 in	26 1/4 in	26 1/2 in	1/4 in	0 in	26 1/4 in	
Shoulder Slope	Shoulder point perpendicular to HPS	false	Full	1/4 in	2 1/2 in	2 1/2 in	0 in	0 in	2 1/2 in	
Front Neck Drop	HPS to neck seam	false	Full	1/8 in	3 1/2 in	3 1/2 in	0 in	0 in	3 1/2 in	
Back Neck Drop	HPS to neck seam	false	Full	1/8 in	3/4 in	7/8 in	1/8 in	0 in	3/4 in	
Back Neck Width	Seam to seam at back neck, at HPS point	false	Full	1/4 in	9 in	9 in	0 in	0 in	9 in	
Minimum Neck Stretch		true	Half	0 in	11 1/2 in	11 1/2 in	0 in	0 in	11 1/2 in	
Across Shoulder Width- Seam to seam	Seam to Seam	false	Full	1/4 in	22 1/2 in	22 1/2 in	0 in	0 in	22 1/2 in	
Across Front	7" dwn from HPS, Seam to seam	false	Half	1/4 in	20 1/2 in	20 1/2 in	0 in	0 in	20 1/2 in	
Across Back	7" dwn from HPS, Seam to Seam	false	Half	1/4 in	21 in	21 in	0 in	0 in	21 in	
Chest Width	1" Below armhole- edge to edge	true	Half	1/4 in	22 1/2 in	23 in	1/2 in	0 in	22 1/2 in	Back to Spec
Bottom Opening 2" Above Rib Knit Seam	At bottom edge	true	Half	1/2 in	0 in	21 in	21 in	0 in	0 in	Back to Spec
Bottom Opening Width- At Seam	Straight with seam relaxed	true	Half	1/4 in	19 in	19 1/4 in	1/4 in	0 in	19 in	
Bottom Opening Width- At Edge	At bottom edge	true	Half	1/4 in	17 in	17 1/2 in	1/2 in	0 in	17 in	Back to Spec
Bottom Hem Height	Bottom edge to stitch line or trim seam	false	Full	1/8 in	2 1/2 in	2 5/8 in	1/8 in	0 in	2 1/2 in	
Side Panel Body Width - Total	Seam to Seam	true	Full	1/4 in	5 1/2 in	5 1/2 in	0 in	0 in	5 1/2 in	
Sleeve Length from CB Neck	3-point measure from CB Neck to shoulder point to sleeve edge	true	Full	1/2 in	35 in	35 1/4 in	1/4 in	0 in	35 in	
Armhole Drop	Below HPS - measure perpendicular	false	Full	1/4 in	13 in	13 1/4 in	1/4 in	0 in	13 in	
Bicep Width	1" below armhole- edge to edge	false	Half	1/4 in	10 1/4 in	10 1/4 in	0 in	0 in	10 1/4 in	
Forearm Width	9" up from sleeve cuff edge	false	Half	1/4 in	7 1/2 in	7 1/4 in	-1/4 in	0 in	7 1/2 in	
Sleeve Opening Width 1" Above Rib Knit Seam	At edge	false	Half	1/4 in	0 in	5 1/4 in	5 1/4 in	5 1/4 in	5 1/4 in	Keep As Sampel
Sleeve Opening Width- At Seam	Width at Seam	false	Half	1/4 in	4 3/4 in	4 5/8 in	-1/8 in	0 in	4 3/4 in	
Sleeve Opening Width- At Edge	At edge	false	Half	1/4 in	3 3/4 in	3 5/8 in	-1/8 in	0 in	3 3/4 in	
Sleeve Cuff Height	Cuff edge to seam	false	Full	1/8 in	2 1/2 in	2 1/2 in	0 in	0 in	2 1/2 in	
Hood Height at CF	From neck seam to top edge	false	Half	3/8 in	15 in	15 1/4 in	1/4 in	0 in	15 in	
Hood Height at HPS		false	Full	1/8 in	13 1/2 in	13 1/2 in	0 in	0 in	13 1/2 in	
Hood Width 6" Below Top Edge	Straight from CF edge to CB seam- 6" down	false	Half	3/8 in	10 3/4 in	10 3/4 in	0 in	0 in	10 3/4 in	
Exposed Drawcord Length		false	Full	1/2 in	10 in	10 in	0 in	0 in	10 in	
Hood Overlap Width at CF Neck		false	Full	1/8 in	1 in	3/4 in	-1/4 in	0 in	1 in	Back to Spec
Hood Tunnel Height		false	Full	1/8 in	1 in	1 in	0 in	0 in	1 in	
Drawcord Opening Placement up from Neck Seam		false	Full	1/8 in	1 1/2 in	1 1/2 in	0 in	0 in	1 1/2 in	
Kangaroo Pocket Height At Center	Height at center	false	Full	1/4 in	8 1/2 in	8 1/4 in	-1/4 in	0 in	8 1/2 in	
Kangaroo Pocket Height at Sides		false	Full	1/8 in	3 in	3 in	0 in	0 in	3 in	
Kangaroo Pocket Width at Top Edge	Width at top edge	false	Full	1/4 in	9 1/2 in	9 1/2 in	0 in	0 in	9 1/2 in	
Kangaroo Pocket Width at Bottom	Width at Bottom Edge	false	Full	1/4 in	13 in	13 in	0 in	0 in	13 in	

Pocket Hem Height	Height of pocket rib or trim	false	Full	1/8 in	3/4 in	3/4 in	0 in	0 in	3/4 in	
WL Chest Artwork Placement from HPS		true	Full	1/8 in	7 1/2 in	8 in	1/2 in	1/4 in	7 3/4 in	Follow Revised
WL Chest Artwork Placement from CF Line		false	Full	1/8 in	2 in	2 in	0 in	1/4 in	2 1/4 in	Follow Revised
Loop Label Placement at Sideseam	Bottom edge to bottom of loop label, at the WL side seam	false	Full	1/8 in	7 in	6 7/8 in	-1/8 in	0 in	7 in	

1st Fit - Anastasiya Zolotova

CREATED ON SEP 27, 2024 8:49 PM
1ST FIT: SIZE:M, CREATED AT: 09-23-2024

NOSCH003 Tonal Logo Hoodie
FITTING DATE: 9/24/24
MODEL/ATTENDEES: Anthony,Jessica,Lonz,Wes,Megan,Jeni,Anastasiya
STATUS: 1st Fit Approved to PPS

Trims:
Substitute Main Label
Substitute Drawcord
Substitute Drawcord Exit

- Fit Comments:**
- 1. Chest width came in +1/2", go back to spec.
 - 2. Bottom opening 2" above rib knit seam keep as sample at 21"
 - 3. Bottom opening at edge came in +1/2", go back to spec.
 - 4. Keep sleeve opening 2" above rib knit seam as sample at 5 1/4"
 - 5. Hood overlap came in -1/4", go back to spec.
 - 6. Follow revised artwork placement from HPS to be 7 3/4"
 - 7. Follow revised artwork placement from CF to be 2 1/4"
1. rộng ngực +1/2", điều chỉnh thông số trong dung sai
2. giữ thông số rộng lai 2" trên đường may rib như mẫu 21"
3. rộng lai tại mép +1/2", điều chỉnh thông số trong dung sai
4. giữ rộng lai tay 2" trên đường may rib như mẫu 21"
5. chôm nón -1/4", điều chỉnh thông số trong dung sai
6. thay đổi vị trí hình thêu từ ngực trái 7 3/4"
7. thay đổi định vị hình thêu từ giữa trước 2 1/4"



Screen Shot 2024-09-26 at 2.38.36 PM.jpg

NOSCH003												
Measured Size: M												
POINT OF MEASURE		HOW TO MEASURE		CRITICAL	TYPE	TOLERANCE	EXPECTED M	1ST FIT - RCV	VARIANCE	ADJUST BY +/-	REVISED SPEC	NOTE MEASUREMENT
Front Body Length	DÀI ÁO THÂN TRƯỚC	HPS to bottom edge	TỪ ĐỈNH VAI ĐẾN MÉP LẠI	true	Full	1/4 in	27 in	27 in	0 in	0 in	27 in	
Back Body Length	DÀI ÁO THÂN SAU	CB neck seam to bottom edge	TỪ GIỮA CỔ SAU ĐẾN MÉP LẠI	true	Full	1/4 in	26 1/4 in	26 1/2 in	1/4 in	0 in	26 1/4 in	
Shoulder Slope	XUÔI VAI	Shoulder point perpendicular to HPS	TỪ ĐIỂM VAI ĐẾN ĐỈNH VAI	false	Full	1/4 in	2 1/2 in	2 1/2 in	0 in	0 in	2 1/2 in	
Front Neck Drop	HẠ CỔ TRƯỚC	HPS to neck seam	TỪ ĐỈNH VAI ĐẾN ĐƯỜNG MAY CỔ	false	Full	1/8 in	3 1/2 in	3 1/2 in	0 in	0 in	3 1/2 in	
Back Neck Drop	HẠ CỔ SAU	HPS to neck seam	TỪ ĐỈNH VAI ĐẾN ĐƯỜNG MAY CỔ	false	Full	1/8 in	3/4 in	7/8 in	1/8 in	0 in	3/4 in	
Back Neck Width	RỘNG CỔ SAU	Seam to seam at back neck, at HPS point	TỪ ĐƯỜNG MAY ĐẾN ĐƯỜNG MAY TẠI CỔ SAU, ĐẾN ĐIỂM VAI	false	Full	1/4 in	9 in	9 in	0 in	0 in	9 in	
Minimum Neck Stretch	NGANG CỔ TỐI THIỂU			true	Half	0 in	11 1/2 in	11 1/2 in	0 in	0 in	11 1/2 in	
Across Shoulder Width- Seam to seam	NGANG VAI - ĐƯỜNG MAY ĐẾN ĐƯỜNG MAY	Seam to Seam	ĐƯỜNG MAY ĐẾN ĐƯỜNG MAY	false	Full	1/4 in	22 1/2 in	22 1/2 in	0 in	0 in	22 1/2 in	
Across Front	NGANG THÂN TRƯỚC	7" dwn from HPS, Seam to seam	HẠ 7" TỪ ĐỈNH VAI, TỪ ĐƯỜNG MAY ĐẾN ĐƯỜNG MAY	false	Half	1/4 in	20 1/2 in	20 1/2 in	0 in	0 in	20 1/2 in	
Across Back	NGANG THÂN SAU	7" dwn from HPS, Seam to Seam	HẠ 7" TỪ ĐỈNH VAI, TỪ ĐƯỜNG MAY ĐẾN ĐƯỜNG MAY	false	Half	1/4 in	21 in	21 in	0 in	0 in	21 in	
Chest Width	RỘNG NGỰC	1" Below armhole-edge to edge	DƯỚI NÁCH 1" - TỪ MÉP ĐẾN MÉP	true	Half	1/4 in	22 1/2 in	23 in	1/2 in	0 in	22 1/2 in	Back to Spec ĐIỀU CHỈNH THÔNG SỐ TRONG DUNG SAI
Bottom Opening 2" Above Rib Knit Seam	RỘNG LẠI ÁO 2" TRÊN ĐƯỜNG MAY RIB	At bottom edge	TẠI MÉP	true	Half	1/2 in	0 in	21 in	21 in	0 in	0 in	Back to Spec ĐIỀU CHỈNH THÔNG SỐ TRONG DUNG SAI
Bottom Opening Width- At Seam	RỘNG LẠI ÁO - TẠI ĐƯỜNG MAY	Straight with seam relaxed	ĐỂ ỀM ĐO THẲNG	true	Half	1/4 in	19 in	19 1/4 in	1/4 in	0 in	19 in	
Bottom Opening Width- At Edge	RỘNG LẠI ÁO - TẠI MÉP	At bottom edge	TẠI MÉP LẠI	true	Half	1/4 in	17 in	17 1/2 in	1/2 in	0 in	17 in	Back to Spec ĐIỀU CHỈNH THÔNG SỐ TRONG DUNG SAI
Bottom Hem Height	CAO LẠI ÁO	Bottom edge to stitch line or trim seam	TỪ MÉP ĐẾN ĐƯỜNG ĐIỀU	false	Full	1/8 in	2 1/2 in	2 5/8 in	1/8 in	0 in	2 1/2 in	
Side Panel Body Width - Total	RỘNG PHỐI SƯỜN	Seam to Seam	ĐƯỜNG MAY ĐẾN ĐƯỜNG MAY	true	Full	1/4 in	5 1/2 in	5 1/2 in	0 in	0 in	5 1/2 in	
Sleeve Length from CB Neck	DÀI TAY TỪ GIỮA CỔ SAU	3-point measure from CB Neck to shoulder point to sleeve edge	3 ĐIỂM - TỪ GIỮA CỔ SAU ĐẾN ĐIỂM VAI ĐẾN MÉP TAY	true	Full	1/2 in	35 in	35 1/4 in	1/4 in	0 in	35 in	
Armhole Drop	HẠ NÁCH	Below HPS - measure perpendicular	DƯỚI ĐỈNH VAI VUÔNG GÓC	false	Full	1/4 in	13 in	13 1/4 in	1/4 in	0 in	13 in	
Bicep Width	RỘNG BẮP TAY	1" below armhole-edge to edge	DƯỚI NÁCH 1" - TỪ MÉP ĐẾN MÉP	false	Half	1/4 in	10 1/4 in	10 1/4 in	0 in	0 in	10 1/4 in	

Forearm Width	RỘNG CẢNG TAY	9" up from sleeve cuff edge	TỪ MÉP LẠI TAY LÊN 9"	false	Half	1/4 in	7 1/2 in	7 1/4 in	-1/4 in	0 in	7 1/2 in	
Sleeve Opening Width 1" Above Rib Knit Seam	RỘNG CỬA TAY 1" TRÊN ĐƯỜNG MAY RIB	At edge	TẠI MÉP	false	Half	1/4 in	0 in	5 1/4 in	5 1/4 in	5 1/4 in	5 1/4 in	Keep As Sampil GIỮ NHƯ MẪU
Sleeve Opening Width- At Seam	RỘNG CỬA TAY TẠI ĐƯỜNG MAY	Width at Seam	RỘNG TẠI ĐƯỜNG MAY	false	Half	1/4 in	4 3/4 in	4 5/8 in	-1/8 in	0 in	4 3/4 in	
Sleeve Opening Width- At Edge	RỘNG CỬA TAY TẠI MÉP	At edge	TẠI MÉP	false	Half	1/4 in	3 3/4 in	3 5/8 in	-1/8 in	0 in	3 3/4 in	
Sleeve Cuff Height	TỔ BÀN LẠI TAY	Cuff edge to seam	TỪ MÉP ĐẾN ĐƯỜNG MAY	false	Full	1/8 in	2 1/2 in	2 1/2 in	0 in	0 in	2 1/2 in	
Hood Height at CF	CAO NÓN TẠI GIỮA TRƯỚC	From neck seam to top edge	TỪ ĐƯỜNG MAY CỔ ĐẾN MÉP TRÊN	false	Half	3/8 in	15 in	15 1/4 in	1/4 in	0 in	15 in	
Hood Height at HPS	CAO NÓN TẠI ĐỈNH VAI			false	Full	1/8 in	13 1/2 in	13 1/2 in	0 in	0 in	13 1/2 in	
Hood Width 6" Below Top Edge	RỘNG NÓN DƯỚI ĐỈNH 6"	Straight from CF edge to CB seam- 6" down	HA 6" TỪ MÉP GIỮA TRƯỚC NÓN ĐẾN ĐƯỜNG MAY GIỮA SAU	false	Half	3/8 in	10 3/4 in	10 3/4 in	0 in	0 in	10 3/4 in	
Exposed Drawcord Length	DÀI DÂY LƯƠN DƯ RA KHỎI MẮT CỎ			false	Full	1/2 in	10 in	10 in	0 in	0 in	10 in	
Hood Overlap Width at CF Neck	ĐỘ CHỖM MIỆNG NÓN			false	Full	1/8 in	1 in	3/4 in	-1/4 in	0 in	1 in	Back to Spec ĐIỀU CHỈNH THÔNG SỐ TRONG DUNG SAI
Hood Tunnel Height	CAO MIỆNG NÓN			false	Full	1/8 in	1 in	1 in	0 in	0 in	1 in	
Drawcord Opening Placement up from Neck	VỊ TRÍ MẮT CỎ TỪ ĐM CỔ			false	Full	1/8 in	1 1/2 in	1 1/2 in	0 in	0 in	1 1/2 in	
Kangaroo Pocket Height At Center	CAO TÚI KANGAROO TẠI GIỮA	Height at center	CAO TẠI GIỮA	false	Full	1/4 in	8 1/2 in	8 1/4 in	-1/4 in	0 in	8 1/2 in	
Kangaroo Pocket Height at Sides	CAO TÚI KANGAROO TẠI SƯỜN			false	Full	1/8 in	3 in	3 in	0 in	0 in	3 in	
Kangaroo Pocket Width at Top Edge	RỘNG TÚI KANGAROO TẠI MÉP TRÊN	Width at top edge	RỘNG TẠI CẠNH TRÊN	false	Full	1/4 in	9 1/2 in	9 1/2 in	0 in	0 in	9 1/2 in	
Kangaroo Pocket Width at Bottom	RỘNG TÚI KANGAROO TẠI LẠI	Width at Bottom Edge	RỘNG TẠI CẠNH DƯỚI	false	Full	1/4 in	13 in	13 in	0 in	0 in	13 in	
Pocket Hem Height	CAO MIỆNG TÚI	Height of pocket rib or trim	CAO CỦA MIỆNG TÚI	false	Full	1/8 in	3/4 in	3/4 in	0 in	0 in	3/4 in	
WL Chest Artwork Placement from HPS	ĐỊNH VỊ HÌNH THÊU TẠI NGỰC TRÁI TỪ ĐỈNH VAI			true	Full	1/8 in	7 1/2 in	8 in	1/2 in	1/4 in	7 3/4 in	Follow Revised THEO THÔNG SỐ MỚI
WL Chest Artwork Placement from CF Line	ĐỊNH VỊ HÌNH THÊU TẠI NGỰC TRÁI TỪ GIỮA TRƯỚC			false	Full	1/8 in	2 in	2 in	0 in	1/4 in	2 1/4 in	Follow Revised THEO THÔNG SỐ MỚI
Loop Label Placement at Side seam	VỊ TRÍ NHÃN SƯỜN NGOÀI	Bottom edge to bottom of loop label, at the WL side seam	TỪ MÉP LẠI ĐẾN MÉP DƯỚI NHÃN, TẠI SƯỜN TRÁI	false	Full	1/8 in	7 in	6 7/8 in	-1/8 in	0 in	7 in	