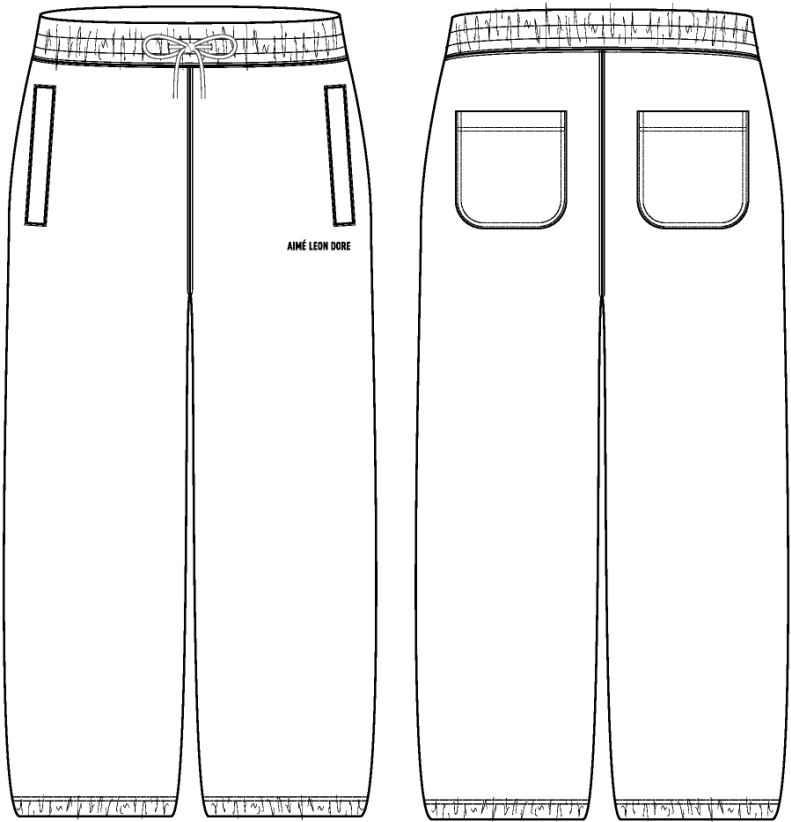


Name	Tonal Logo Sweatpant
Style No.	NOSCP003
Division	Mens
Category	Sweatpants
Season	Spring/Summer
Year	2025
Size Scale	<div>M -Sample size</div> <div><div>XS</div><div>S</div><div>M</div><div>L</div><div>XL</div><div>XXL</div></div>
Style Status	Adopted
Factory	UN-AVAILABLE
Designer Name	Lonz
TD Name	Anastasiya
Created by/Author	9/27/2024 Anastasiya Zolotova anastasiya.zolotova@aimeleondore.com

Tonal Logo Sweatpant



1\_B&W-1



JET BLACK

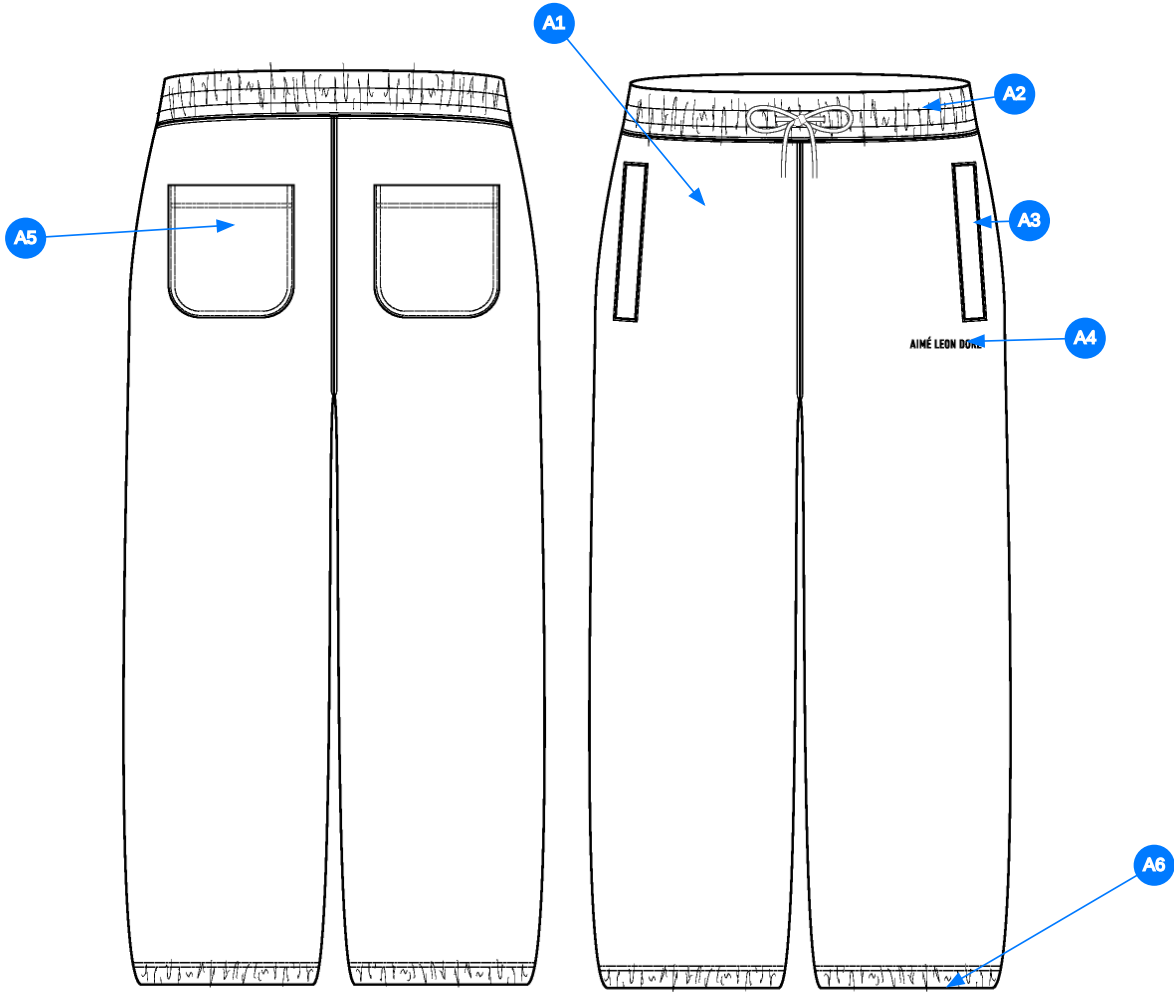
EVENING BLUE

OATMEAL

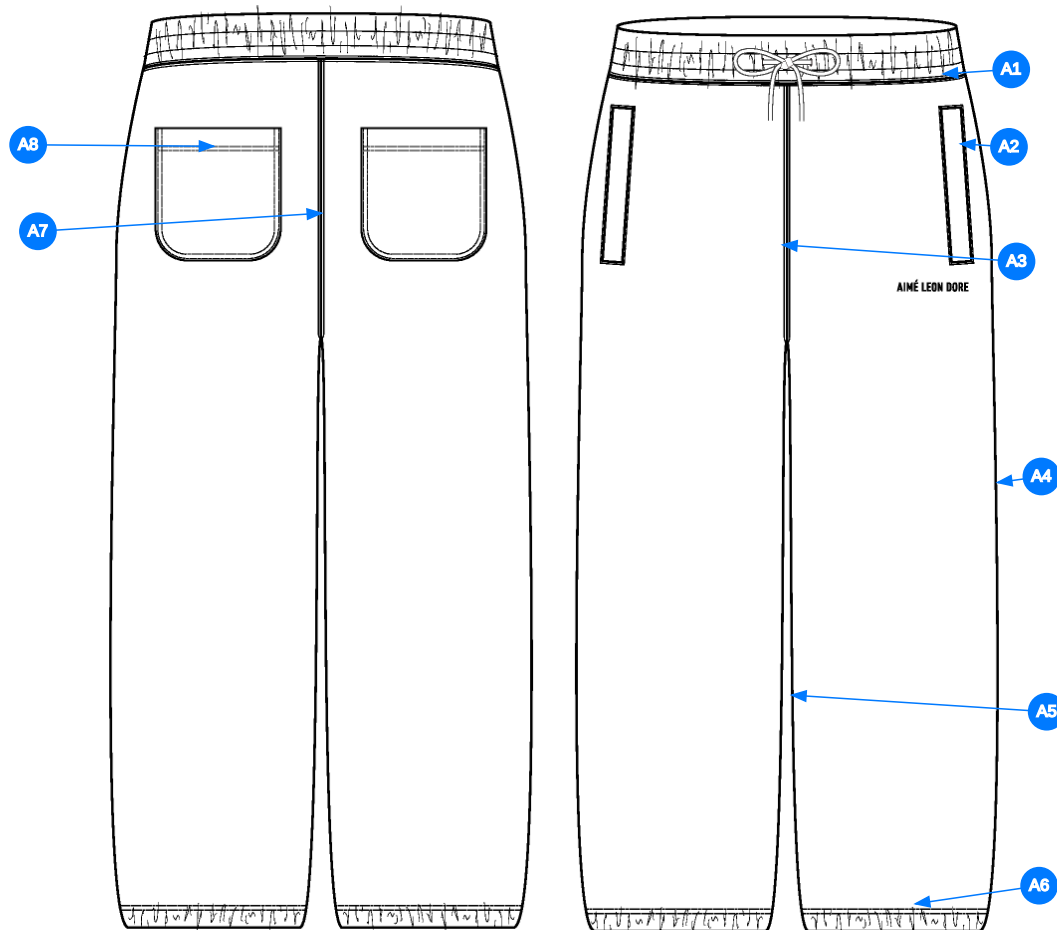
2\_CLR-1

Comments (6)

- A1 FIT: 997 SWEATPANT (NB24CP000)
- A2 PIECED ON WAISTBAND W/ DRAWCORDS - COTTON FLAT BRAIDED DRAWCORDS - DRAWCORD FINISHED W/ TURNBACK - THREAD EYELETS
- A3 WELT POCKETS @ FRONT BODY - USE COTTON JERSEY FOR KNUCKLE SIDE - USE SELF FABRIC FOR PALM SIDE
- A4 ARTWORK @ WL LEG - SEE SEPARATE FILE FOR ARTWORK DETAILS
- A5 SELF FABRIC PATCH POCKETS
- A6 ELASTICATED LEG OPENING



3\_Construction Details-1



Comments (8)

- A1** STRADDLE STITCH @ WAISTBAND - 1/4" DN TS @ DRAWCORD TUNNEL
- A2** 1/8" SN TS @ WELT POCKET - BAR TACKS @ TOP & BOTTOM EDGES
- A3** STRADDLE STITCH @ FRONT RISE
- A4** STRADDLE STITCH @ SIDE SEAM
- A5** STRADDLE STITCH @ INSEAM
- A6** 1/4" DN TS @ BOTTOM HEM
- A7** STRADDLE STITCH @ BACK RISE
- A8** 1/4" DN TS @ PATCH POCKETS

4\_Stitching Details-1

Measured Size: M

POINT OF MEASURE	HOW TO MEASURE	CRITICAL	TYPE	TOLERANCE	EXPECTED	1ST FIT - RCVD	VARIANCE	ADJUST BY +/-	REVISED SPEC	MEASUREMENT NOTES
Waistband Height	Waist seam to top edge	false	Full	1/8 in	2 in	2 in	0 in	0 in	2 in	
Waist Width Relaxed	Straight at top edge- garment relaxed	true	Half	1/2 in	15 3/8 in	15 1/2 in	1/8 in	0 in	15 3/8 in	
Waist Width Extended	Straight, with waist or elastic stretched	true	Half	1/2 in	21 in	21 in	0 in	0 in	21 in	
Distance Between Drawcord Exit		false	Full	1/8 in	1 1/2 in	1 1/2 in	0 in	0 in	1 1/2 in	
Exposed Drawcord Length		false	Full	1/2 in	10 in	9 in	-1 in	0 in	10 in	
Front Rise	Crotch seam to waistband top edge	true	Half	3/8 in	13 1/4 in	13 1/2 in	1/4 in	0 in	13 1/4 in	
Back Rise	Crotch seam to waistband top edge	true	Half	3/8 in	16 1/2 in	16 3/4 in	1/4 in	0 in	16 1/2 in	
Low Hip Position Below Waistband Top Edge		true	Full	0 in	8 in	8 in	0 in	0 in	8 in	
Low Hip Width	3-pt measurement taken 8" down from waistband top edge	true	Half	1/2 in	21 1/2 in	22 1/4 in	3/4 in	0 in	21 1/2 in	Back to Spec
Thigh Width	1" below crotch point	false	Half	3/8 in	13 1/4 in	13 1/2 in	1/4 in	0 in	13 1/4 in	
Knee Width	12" down from the crotch point	false	Half	3/8 in	11 1/2 in	11 1/2 in	0 in	0 in	11 1/2 in	
Calf Width	Measured 18" down from Crotch point	false	Half	1/4 in	10 3/4 in	10 1/2 in	-1/4 in	-1/2 in	10 1/4 in	Reduce
Leg Opening Width Relaxed		false	Half	1/4 in	6 1/2 in	6 1/2 in	0 in	0 in	6 1/2 in	
Leg Opening Width Extended	Straight at edge	false	Half	1/4 in	9 1/2 in	9 1/2 in	0 in	0 in	9 1/2 in	
Bottom Hem Height	Bottom edge to stitch line or trim seam	false	Full	1/8 in	1 in	1 in	0 in	0 in	1 in	
Inseam Length	Crotch point to leg opening, along seam	true	Full	1/2 in	29 1/2 in	28 1/2 in	-1 in	-1/2 in	29 in	Follow Revised
Front Pocket Welt Width		false	Full	1/8 in	5/8 in	5/8 in	0 in	0 in	5/8 in	
Welt Pocket Placement Below Waistband	Waistband seam to top of pocket	false	Full	1/4 in	3/4 in	3/4 in	0 in	0 in	3/4 in	
Welt Pocket Opening Length	Along opening edge	false	Full	1/4 in	6 1/4 in	6 in	-1/4 in	0 in	6 1/4 in	
Pocket Bag Height	Top edge to bottom edge of pocket bag inside	false	Full	1/8 in	11 1/2 in	11 in	-1/2 in	0 in	11 1/2 in	Back to Spec
Pocket Bag Width		false	Full	1/8 in	7 in	7 1/4 in	1/4 in	0 in	7 in	Back to Spec
Back Pocket Placement Below Waistband Seam	Waistband seam to top of pocket	false	Full	1/4 in	2 1/4 in	2 1/4 in	0 in	0 in	2 1/4 in	
Back Pocket Placement from CB Rise	Inside edge of pocket to CB rise seam	false	Full	1/4 in	2 1/4 in	2 1/4 in	0 in	0 in	2 1/4 in	
Back Pocket Hem Height	Edge to stitch line	false	Full	1/8 in	3/4 in	3/4 in	0 in	0 in	3/4 in	
Back Pocket Width	Width of pocket at widest	false	Full	1/4 in	5 3/4 in	5 3/4 in	0 in	0 in	5 3/4 in	
Back Pocket Height	Top edge to bottom edge	false	Full	1/4 in	6 1/4 in	6 in	-1/4 in	0 in	6 1/4 in	
WL Front Artwork Placement Below Pocket Edge		true	Full	1/8 in	3/4 in	7/8 in	1/8 in	0 in	3/4 in	
WL Front Artwork Forward From Outseam		true	Full	1/8 in	2 1/4 in	2 1/8 in	-1/8 in	0 in	2 1/4 in	

1st Fit - Anastasiya Zolotova

CREATED ON SEP 27, 2024 8:17 PM  
1ST FIT: SIZE:M, CREATED AT: 09-23-2024

NOSCP003 Tonal Logo Sweatpant  
**FITTING DATE:** 9/24/24  
**MODEL/ATTENDEES:** Anthony,Jessica,Lonz,Wes,Megan,Jeni,Anastasiya  
**STATUS:** 1st Fit Approved to PPS

**Trims:**  
Substitute main label  
Substitute Elastic  
Substitute Drawcord

- Fit Comments:**
- 1. Exposed drawcord length came in -1", go back to spec.
  - 2. Low hip came in +3/4", go back to spec.
  - 3. Reduce calf width to 10 1/4".
  - 4. Follow revised inseam length of 29".
  - 5. Pocket bag height came in -1/2", go back to spec.
  - 6. Pocket bag width came in +1/4", go back to spec.

**Construction/Workmanship:**

- 1. Back pocket seam allowance is too visible. Please trim interior seam allowance. See image.

- Fit comments**
- 1. dài dây luồn dư ra khỏi mắt cáo -1", điều chỉnh thông số trong dung sai
  - 2. hông +3/4", điều chỉnh thông số trong dung sai
  - 3. giảm rộng bắp chân 10 1/4"
  - 4. thay đổi sườn trong 29"
  - 5. cao lót túi -1/2", điều chỉnh thông số trong dung sai
  - 6. rộng lót túi +1/4", điều chỉnh thông số trong dung sai
- cấu trúc:**
- 1. đường vắt sổ túi sau quá lộ, vui lòng điều chỉnh đường vắt sổ bên trong, xem hình



Screen Shot 2024-09-27 at 4.04.54 PM.jpg





Screen Shot 2024-09-27 at 5.20.18 PM.jpg

<b>NOSCP003</b>												
<b>Measured Size: M</b>												
POINT OF MEASURE		HOW TO MEASURE		CRITICAL	TYPE	TOLERANCE	EXPECTED	1ST FIT - RCV	VARIANCE	ADJUST BY +/-	REVISED SPEC	NOTE MEASUREMENT
Waistband Height	TO BÀN LƯNG	Waist seam to top edge	TỪ ĐƯỜNG TRÁ LƯNG TỚI MÉP TRÊN LƯNG	false	Full	1/8 in	2 in	2 in	0 in	0 in	2 in	
Waist Width Relaxed	RỘNG LƯNG ĐO ẾM	Straight at top edge-garment relaxed	ĐO THẲNG TẠI MÉP TRÊN - ĐO ẾM	true	Half	1/2 in	15 3/8 in	15 1/2 in	1/8 in	0 in	15 3/8 in	
Waist Width Extended	RỘNG LƯNG ĐO CĂNG	Straight, with waist or elastic stretched	ĐO THẲNG- ĐO CĂNG	true	Half	1/2 in	21 in	21 in	0 in	0 in	21 in	
Distance Between Drawcord Exit	KHOẢNG CÁCH GIỮA 2 MẮT CÁO			false	Full	1/8 in	1 1/2 in	1 1/2 in	0 in	0 in	1 1/2 in	
Exposed Drawcord Length	DÀI DÂY LUỒN LỘ RA KHỎI MẮT CÁO			false	Full	1/2 in	10 in	9 in	-1 in	0 in	10 in	
Front Rise	ĐÁY TRƯỚC	Crotch seam to waistband top edge	TỪ ĐƯỜNG MAY ĐÁY TỚI MÉP LƯNG TRÊN	true	Half	3/8 in	13 1/4 in	13 1/2 in	1/4 in	0 in	13 1/4 in	
Back Rise	ĐÁY SAU	Crotch seam to waistband top edge	TỪ ĐƯỜNG MAY ĐÁY TỚI MÉP LƯNG TRÊN	true	Half	3/8 in	16 1/2 in	16 3/4 in	1/4 in	0 in	16 1/2 in	
Low Hip Position Below Waistband Top Edge	VỊ TRÍ HÔNG DƯỚI MÉP LƯNG TRÊN			true	Full	0 in	8 in	8 in	0 in	0 in	8 in	
Low Hip Width	RỘNG HÔNG	3-pt measurement taken 8" down from waistband top edge	ĐO 3 ĐIỂM - 8" DƯỚI MÉP LƯNG TRÊN	true	Half	1/2 in	21 1/2 in	22 1/4 in	3/4 in	0 in	21 1/2 in	Back to Spec ĐIỀU CHỈNH THÔNG SỐ TRONG DUNG SAI
Thigh Width	RỘNG ĐÙI	1" below crotch point	1" DƯỚI ĐÁY	false	Half	3/8 in	13 1/4 in	13 1/2 in	1/4 in	0 in	13 1/4 in	
Knee Width	RỘNG ÓNG QUẦN	12" down from the crotch point	12" DƯỚI ĐÁY	false	Half	3/8 in	11 1/2 in	11 1/2 in	0 in	0 in	11 1/2 in	
Calf Width	RỘNG BẮP CHÂN	Measured 18" down from Crotch point	18" DƯỚI ĐÁY	false	Half	1/4 in	10 3/4 in	10 1/2 in	-1/4 in	-1/2 in	10 1/4 in	Reduce GIẢM
Leg Opening Width Relaxed	CỬA QUẦN TẠI MÉP ĐO ẾM			false	Half	1/4 in	6 1/2 in	6 1/2 in	0 in	0 in	6 1/2 in	
Leg Opening Width Extended	CỬA QUẦN TẠI MÉP ĐO CĂNG	Straight at edge	ĐO THẲNG TẠI MÉP	false	Half	1/4 in	9 1/2 in	9 1/2 in	0 in	0 in	9 1/2 in	
Bottom Hem Height	TO BÀN LẠI	Bottom edge to stitch line or trim seam	TỪ MÉP ĐẾN ĐIỀU	false	Full	1/8 in	1 in	1 in	0 in	0 in	1 in	
Inseam Length	DÀI SƯỜN TRONG	Crotch point to leg opening, along seam	TỪ ĐÁY ĐẾN MÉP, DỌC THEO ĐƯỜNG MAY	true	Full	1/2 in	29 1/2 in	28 1/2 in	-1 in	-1/2 in	29 in	Follow Revised THAY ĐỔI THÔNG SỐ
Front Pocket Welt Width	RỘNG CƠI TÚI TRƯỚC			false	Full	1/8 in	5/8 in	5/8 in	0 in	0 in	5/8 in	
Welt Pocket Placement Below Waistband	VỊ TRÍ TÚI TRƯỚC DƯỚI LƯNG	Waistband seam to top of pocket	TỪ ĐƯỜNG MAY LƯNG TỚI ĐỈNH MÉP TÚI	false	Full	1/4 in	3/4 in	3/4 in	0 in	0 in	3/4 in	
Welt Pocket Opening Length	DÀI MIỆNG TÚI	Along opening edge	DỌC MÉP TÚI	false	Full	1/4 in	6 1/4 in	6 in	-1/4 in	0 in	6 1/4 in	

Pocket Bag Height	CAO BAO TÚI	Top edge to bottom edge of pocket bag inside	TỪ MIỆNG TÚI TỚI MÉP BAO TÚI BÊN TRONG	false	Full	1/8 in	11 1/2 in	11 in	-1/2 in	0 in	11 1/2 in	Back to Spec ĐIỀU CHỈNH THÔNG SỐ TRONG DUNG SAI
Pocket Bag Width	RỘNG BAO TÚI			false	Full	1/8 in	7 in	7 1/4 in	1/4 in	0 in	7 in	Back to Spec ĐIỀU CHỈNH THÔNG SỐ TRONG DUNG SAI
Back Pocket Placement Below Waistband Seam	VỊ TRÍ TÚI SAU DƯỚI ĐƯỜNG MAY LƯNG	Waistband seam to top of pocket	TỪ ĐƯỜNG MAY LƯNG TỚI ĐỈNH TÚI	false	Full	1/4 in	2 1/4 in	2 1/4 in	0 in	0 in	2 1/4 in	
Back Pocket Placement from CB Rise	VỊ TRÍ TÚI SAU TỪ GIỮA ĐÁY SAU	Inside edge of pocket to CB rise seam	MÉP TRONG CỦA TÚI TỚI ĐƯỜNG MAY ĐÁY GIỮA SAU	false	Full	1/4 in	2 1/4 in	2 1/4 in	0 in	0 in	2 1/4 in	
Back Pocket Hem Height	CAO MIỆNG TÚI THÂN SAU	Edge to stitch line	TỪ MÉP TỚI ĐƯỜNG ĐIỀU	false	Full	1/8 in	3/4 in	3/4 in	0 in	0 in	3/4 in	
Back Pocket Width	RỘNG TÚI THÂN SAU	Width of pocket at widest	RỘNG TÚI TẠI ĐIỂM RỘNG NHẤT	false	Full	1/4 in	5 3/4 in	5 3/4 in	0 in	0 in	5 3/4 in	
Back Pocket Height	CAO TÚI THÂN SAU	Top edge to bottom edge	TỪ MÉP TRÊN TỚI MÉP DƯỚI	false	Full	1/4 in	6 1/4 in	6 in	-1/4 in	0 in	6 1/4 in	
WL Front Artwork Placement Below Pocket Edge	VỊ TRÍ HÌNH THỂ QUẦN TRÁI DƯỚI MÉP TÚI			true	Full	1/8 in	3/4 in	7/8 in	1/8 in	0 in	3/4 in	
WL Front Artwork Forward From Outseam	VỊ TRÍ HÌNH THỂ QUẦN TRÁI TỪ SƯỜN NGOÀI VÀO			true	Full	1/8 in	2 1/4 in	2 1/8 in	-1/8 in	0 in	2 1/4 in	