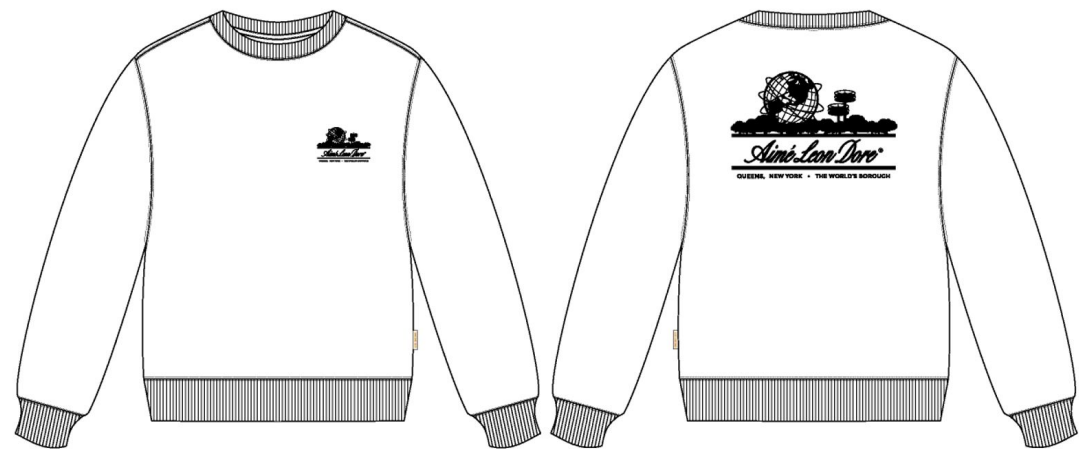


Unisphere Crewneck - UA

Name	Unisphere Crewneck - UA
Style No.	NOSCS001
Division	Mens
Category	Sweatshirts
Size Scale	<div>M</div> -Sample size <div><div>XS</div><div>S</div><div>M</div><div>L</div><div>XL</div><div>XXL</div></div>
Factory	UN-AVAILABLE
Designer Name	Lonz
TD Name	Anastasiya
Created by/Author	5/7/2024 Jeni Fitzgerald jeni.fitzgerald@aimeleondore.com



1_B&W-1



EVENING BLUE

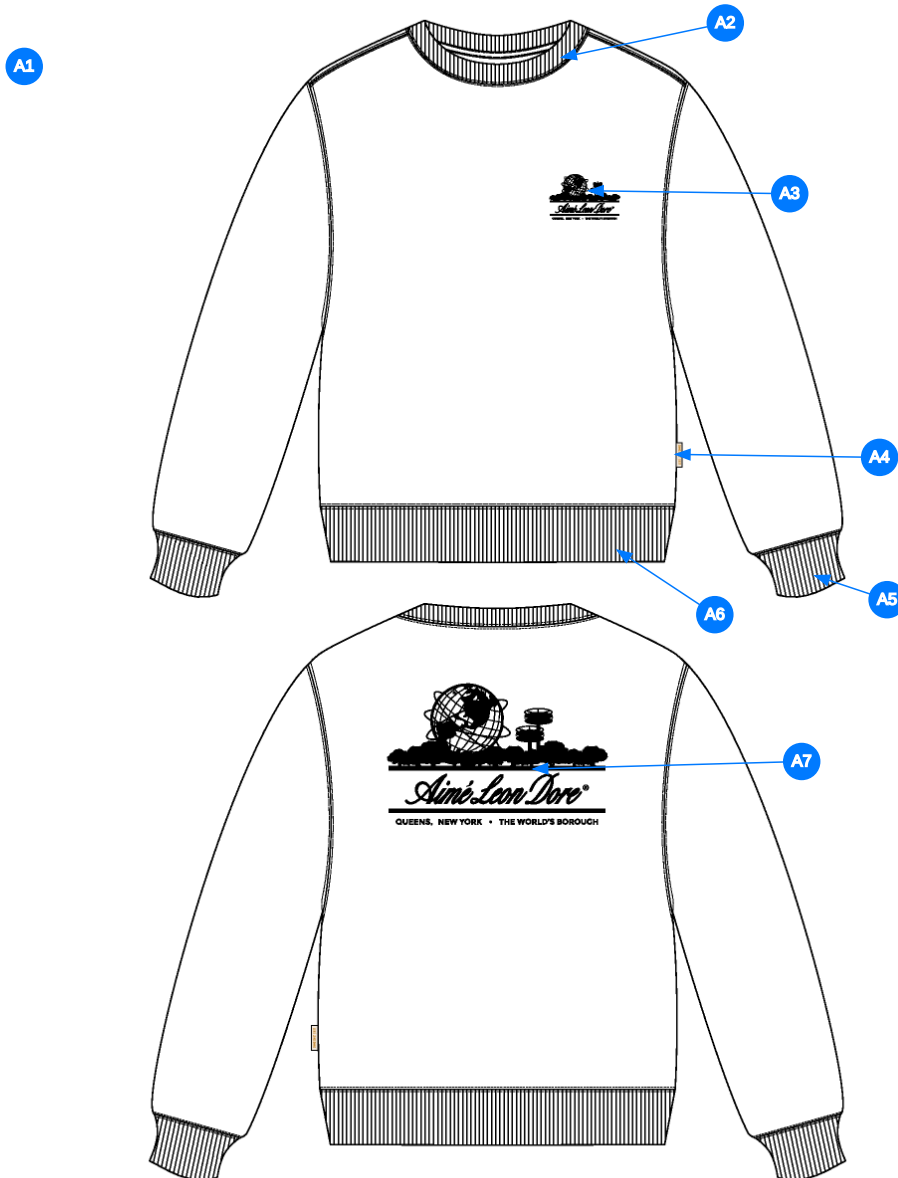


BOTANICAL
GARDEN



PRISTINE

2_CLR 9-1

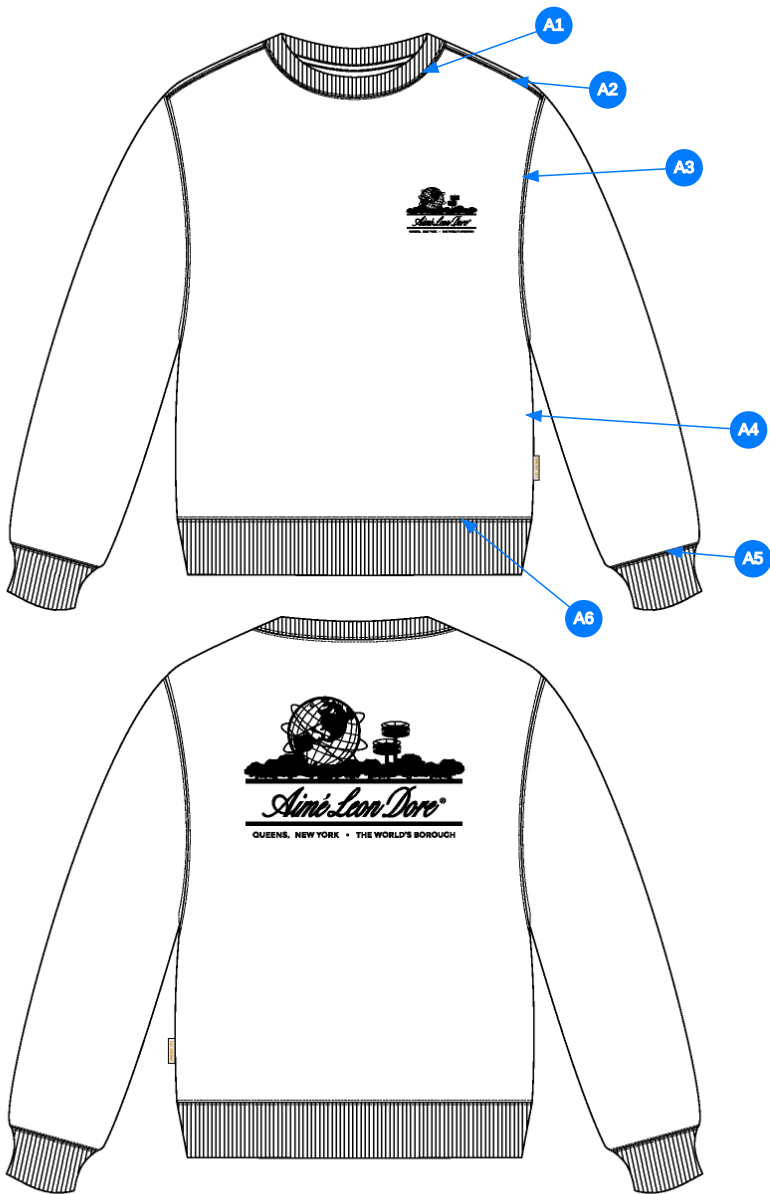


Comments (7)

- A1** FIT: SEASONAL UNISPHERE CREWNECK (FW23CS014)
- A2** 2X2 RIB DOUBLED @ COLLAR - HERRINGBONE TAPE ALONG NECK
- A3** ARTWORK @ WL CHEST - SEE FOLLOWING PAGES FOR ARTWORK DETAILS
- A4** ALD WOVEN LABEL @ SIDE SEAM
- A5** 2X2 RIB DOUBLED @ SLEEVE CUFF - HERRINGBONE TAPE ALONG NECK
- A6** 2X2 RIB DOUBLED @ BOTTOM HEM - HERRINGBONE TAPE ALONG NECK
- A7** ARTWORK @ CB

1. FIT: THAM KHẢO FW24CS014
2. RIB 2X2 GẤP ĐÔI TẠI CỔ - DÂY TAPE XƯƠNG CÁ DỌC CỔ
3. HÌNH IN TẠI NGỰC TRÁI - XEM CHI TIẾT TẠI FILE ARTWORK
4. NHÃN CỜ SƯỜN NGOÀI
5. RIB 2X2 GẤP ĐÔI TẠI LẠI TAY
- 6, NHÃN 2X2 GẤP ĐÔI TẠI LẠI ÁO
7. HÌNH IN GIỮA THÂN SAU

3_Construction Details-1



Comments (6)

- A1 STRADDLE STITCH @ NECK
- A2 STRADDLE STITCH @ SHOULDER
- A3 STRADDLE STITCH @ ARMHOLE
- A4 CLEAN SEAM FINISH @ SIDE SEAM
- A5 STRADDLE STITCH @ SLEEVE CUFF
- A6 STRADDLE STITCH @ BOTTOM HEM

- 1. ĐIỀU RẼ TẠI CỔ
- 2. ĐIỀU RẼ TẠI VAI
- 3. ĐIỀU RẼ TẠI NÁCH
- 4. MAY SẠCH TẠI ĐƯỜNG MAY SƯỜN
- 5. ĐIỀU RẼ TẠI LAI TAY
- 6. ĐIỀU RẼ TẠI LAI ÁO

4_Stitching Details-1

Sample Size: M

POINT OF MEASURE	CODE	HOW TO MEASURE	CRITICAL	TYPE	TOLERANCE	M
Front Body Length	S&K01	HPS to bottom edge	true	Full	1/2 in	27 in
Back Body Length	S&K02	CB neck seam to bottom edge	true	Full	1/2 in	25 3/4 in
Front Neck Drop	S&K04	HPS to neck seam	false	Full	1/8 in	3 3/4 in
Back Neck Drop	S&K05	HPS to neck seam	false	Full	1/8 in	1 1/4 in
Back Neck Width	S&K06	Seam to seam at back neck, at HPS point	false	Full	1/4 in	7 3/4 in
Shoulder Seam Forward	S&K07	HPS to seam	false	Full	1/8 in	1/2 in
Shoulder Slope	S&K08	Shoulder point perpendicular to HPS	false	Full	1/4 in	1 3/4 in
Across Shoulder	S&K09	Seam to seam	false	Half	3/8 in	18 1/4 in
Across Front	S&K010	7" dwn from HPS, Seam to seam	false	Half	3/8 in	17 1/4 in
Across Back	S&K011	7" dwn from HPS, Seam to Seam	false	Half	3/8 in	17 3/4 in
Chest Width	S&K012	1" Below armhole- edge to edge	true	Half	1/2 in	24 in
Bottom Opening Width- At Seam	S&K108	Straight with seam relaxed	true	Half	1/2 in	19 1/2 in
Bottom Opening Width- At Edge	S&K013	At bottom edge	true	Half	1/2 in	17 in
Bottom Trim Height	S&K101	Rib Height	true	Full	1/8 in	3 1/4 in
Sleeve Length from CB Neck	S&K032	3-point measure from CB Neck to shoulder point to sleeve edge	true	Full	1/2 in	34 1/2 in
Armhole Drop	S&K016	Below HPS - measure perpendicular	false	Full	1/4 in	11 1/4 in
Bicep Width	S&K017	1" below armhole- edge to edge	false	Half	1/4 in	8 3/4 in
Forearm Width	S&K033	9" up from sleeve cuff edge	false	Half	1/4 in	6 3/4 in
Sleeve Opening Width- At Seam	S&K034	Width at Seam	false	Half	1/4 in	4 3/4 in
Sleeve Opening Width- At Edge	S&K73	At edge	false	Half	1/4 in	3 3/4 in
Sleeve Cuff Height	S&K36	Cuff edge to seam	false	Full	1/8 in	3 1/4 in
Neck Trim Height	S&K020	Neck Seam to trim edge	false	Full	1/8 in	1 1/4 in
Front Logo Placement below CF Neckline	S&K21		false	Full	1/4 in	3 in
Front Logo Placement out from the CF Line	S&K022		false	Full	1/8 in	1 7/8 in
CB Logo Placement down from CB neck	S&K102	Space between cb neck and cb logo	true	Full	1/8 in	3 3/4 in
Loop Label Placement at Sideseam	S&K023	Bottom edge to bottom of loop label, at the WL side seam	false	Full	1/8 in	7 in






Development Notes - Emily Trock

CREATED ON APR 4, 2024 2:17 AM

NOSCS001 Unisphere Crewneck
Date: 5/7/24
Status: Requesting 1st Proto
TD: Anastasiya

Fit: Follow measurement page, construction page, design sketch, and reference sample to create 1st proto.

FIT: THAM KHẢO TRANG THÔNG SỐ, TRANG CẤU TRÚC, SKETCH VÀ MẪU THAM KHẢO ĐỂ LÀM MẪU PROTO

COMPONENT		QTY	1.  BOTANICAL GARDEN CODE: 19-5220 TCX
1	UA Loop Back Heavy Fleece CODE: C2300234 French Terry Placement: BODY Supplier: UNAVAILABLE Weight: 560gsm	1	-  Botanical Garden Custom Code: 19-5220 TCX Price: 0.00
2	UA 2x2 Terry Rib CODE: C2300246 Placement: COLLAR, CUFFS, HEM Supplier: UNAVAILABLE	4	-  Botanical Garden Custom Code: 19-5220 TCX Price: 0.00
3	HERRINGBONE TAPE CODE: TBD Placement: STRADDLED OVER BACK NECK SEAM F/ SH TO SH Supplier: Factory Sourced	1	-  Botanical Garden Custom Code: 19-5220 TCX SIZE: Undefined Price: 0.00
4	ARTWORK CODE: SCREENPRINT Placement: 3.5" WEARERS LEFT CHEST Notes: FOLLOW ARTWORK + POM Supplier: Factory Sourced		- ARTWORK Price: 0.00
5	ARTWORK CODE: SCREENPRINT Placement: 11.5" CENTER BACK Notes: FOLLOW ARTWORK + POM Supplier: Factory Sourced		- ARTWORK Price: 0.00
LABEL + TRIM PACKAGE			
6	ALD Woven Main Label W/ Size CODE: ALD-ML03 Placement: INTERIOR CENTER BACK NECK Supplier: Colonial Country of Origin: CHINA	1 Piece	- ALD Woven Main Label W/ Size Price: 0.079
7	ALD Woven Loop Label CODE: ALD-ML02 Placement: WEARERS LEFT SIDE SEAM (FOLLOW POM) Supplier: Colonial	1	-  Parmesan Base / Gold Text Price: 0.00
8	ALD Hangtag CODE: ALD-T06P Placement: WEARER'S LEFT ARMHOLE ABOVE SIDE SEAM Supplier: Colonial Country of Origin: CHINA	1 Piece	- ALD Hangtag Price: 0.22
9	ALD Branded Polybag - 15" X 18" (RECYCLED) CODE: ALD-PB02-R Supplier: Colonial Country of Origin: CHINA	1 Piece	- ALD Branded Polybag - 15" x 18" (RECYCLED) Price: 0.29
10	ALD Woven Care + Content + COO Label CODE: ALD-COO-XXX Placement: INTERIOR WEARER'S LEFT SIDE SEAM, 5" ABOVE BODY HEM Supplier: Colonial Country of Origin: CHINA	1 Piece	- ALD Woven Care + Content + COO Label Price: 0.058
11	UPC Sticker CODE: UPC Placement: POLY BAG; BACK SIDE, UPPER RIGHT HAND CORNER Supplier: Factory Sourced	1	- UPC Sticker Price: 0.00
		Components 11	Total 0.647

NOSCS001				Measurements				
Sample Size: M								
POINT OF MEASURE		CODE			CRITI CAL	TYPE	TOLERANCE	EXPECTED
Front Body Length	DÀI ÁO THÂN TRƯỚC	S&K01	HPS to bottom edge	TỪ ĐỈNH VAI ĐẾN MÉP LAI	true	Full	1/2 in	27 in
Back Body Length	DÀI ÁO THÂN SAU	S&K02	CB neck seam to bottom edge	GIỮA CỔ SAU ĐẾN MÉP LAI	true	Full	1/2 in	25 3/4 in
Front Neck Drop	HẠ CỔ TRƯỚC	S&K04	HPS to neck seam	ĐỈNH VAI ĐẾN ĐƯỜNG MAY	false	Full	1/8 in	3 3/4 in
Back Neck Drop	HẠ CỔ SAU	S&K05	HPS to neck seam	ĐỈNH VAI ĐẾN ĐƯỜNG MAY	false	Full	1/8 in	1 1/4 in
Back Neck Width	RỘNG CỔ SAU	S&K06	Seam to seam at back neck, at HPS point	TỪ ĐƯỜNG MAY ĐẾN ĐƯỜNG MAY TẠI CỔ SAU	false	Full	1/4 in	7 3/4 in
Shoulder Seam Forward	CHÒM VAI	S&K07	HPS to seam	TỪ ĐỈNH VAI ĐẾN ĐƯỜNG MAY CỔ	false	Full	1/8 in	1/2 in
Shoulder Slope	XUÔI VAI	S&K08	Shoulder point perpendicular to HPS	ĐO TỪ NGANG VAI ĐẾN ĐIỂM NGANG ĐẦU VAI	false	Full	1/4 in	1 3/4 in
Across Shoulder	NGANG VAI	S&K09	Seam to seam	ĐM ĐẾN ĐM	false	Half	3/8 in	18 1/4 in
Across Front	NGANG THÂN TRƯỚC	S&K010	7" dwn from HPS, Seam to seam	HẠ 7" TỪ CAO VAI, ĐO TỪ ĐƯỜNG MAY	false	Half	3/8 in	17 1/4 in
Across Back	NGANG THÂN SAU	S&K011	7" dwn from HPS, Seam to Seam	HẠ 7" TỪ CAO VAI, ĐO TỪ ĐƯỜNG MAY ĐẾN ĐƯỜNG MAY	false	Half	3/8 in	17 3/4 in
Chest Width	RỘNG NGỰC	S&K012	1" Below armhole- edge to edge	HẠ 1" DƯỚI NGÃ TỰ NÁCH, ĐO TỪ MÉP ĐẾN MÉP	true	Half	1/2 in	24 in
Bottom Opening Width- At Seam	NGANG LAI ÁO - TẠI ĐƯỜNG MAY	S&K108	Straight with seam relaxed	ĐO THẲNG THEO ĐƯỜNG MAY, ĐO ẼM	true	Half	1/2 in	19 1/2 in
Bottom Opening Width- At Edge	RỘNG LAI ÁO - TẠI MÉP	S&K013	At bottom edge	TẠI MÉP LAI	true	Half	1/2 in	17 in

Bottom Trim Height	TO BẮN LAI ÁO	S&K101	Rib Height	CAO BƠ	true	Full	1/8 in	3 1/4 in
Sleeve Length from CB Neck	DÀI TAY TỪ GIỮA CỔ SAU	S&K032	3-point measure from CB Neck to shoulder point to sleeve edge	ĐO 3 ĐIỂM TỪ GIỮA CỔ SAU ĐẾN ĐIỂM VAI ĐẾN MÉP TAY	true	Full	1/2 in	34 1/2 in
Armhole Drop	HẠ NÁCH	S&K016	Below HPS - measure perpendicular	HẠ TỪ CAO VAI ĐẾN ĐIỂM NẠNG NGẮ TỪ NÁCH	false	Full	1/4 in	11 1/4 in
Bicep Width	RỘNG BẮP TAY	S&K017	1" below armhole- edge to edge	HẠ 1" DƯỚI NGẮ TỪ NÁCH, ĐO TỪ MÉP ĐẾN MÉP	false	Half	1/4 in	8 3/4 in
Forearm Width	RỘNG CẰNG TAY	S&K033	9" up from sleeve cuff edge	9" TỪ MÉP LAI TAY	false	Half	1/4 in	6 3/4 in
Sleeve Opening Width- At Seam	RỘNG LAI ÁO - TẠI ĐƯỜNG MAY	S&K034	Width at Seam	RỘNG TẠI ĐƯỜNG MAY	false	Half	1/4 in	4 3/4 in
Sleeve Opening Width- At Edge	RỘNG LAI ÁO - TẠI MÉP	S&K73	At edge	TẠI MÉP LAI	false	Half	1/4 in	3 3/4 in
Sleeve Cuff Height	TO BẮN LAI TAY	S&K36	Cuff edge to seam	MÉP ĐẾN ĐƯỜNG MAY	false	Full	1/8 in	3 1/4 in
Neck Trim Height	TO BẮN BƠ CỔ	S&K020	Neck Seam to trim edge	MÉP ĐẾN ĐƯỜNG MAY CỔ	false	Full	1/8 in	1 1/4 in
Front Logo Placement below CF Neckline	ĐỊNH VỊ HÌNH IN NGỰC TRÁI DƯỚI VIỀN CỔ TRƯỚC	S&K21			false	Full	1/4 in	3 in
Front Logo Placement out from the CF Line	ĐỊNH VỊ HÌNH IN NGỰC TRÁI TỪ GIỮA TRƯỚC	S&K022			false	Full	1/8 in	1 7/8 in
CB Logo Placement down from CB neck	ĐỊNH VỊ HÌNH IN THÂN SAU DƯỚI GIỮA CỔ SAU	S&K102	Space between cb neck and cb logo		true	Full	1/8 in	3 3/4 in
Loop Label Placement at Sideseam	VỊ TRÍ NHÃN SƯỜN CÒ SƯỜN NGOÀI	S&K023	Bottom edge to bottom of loop label, at the WL side seam	MÉP LAI ĐẾN MÉP NHÃN, TẠI SƯỜN TRÁI NGOÀI NGƯỜI MẶC	false	Full	1/8 in	7 in