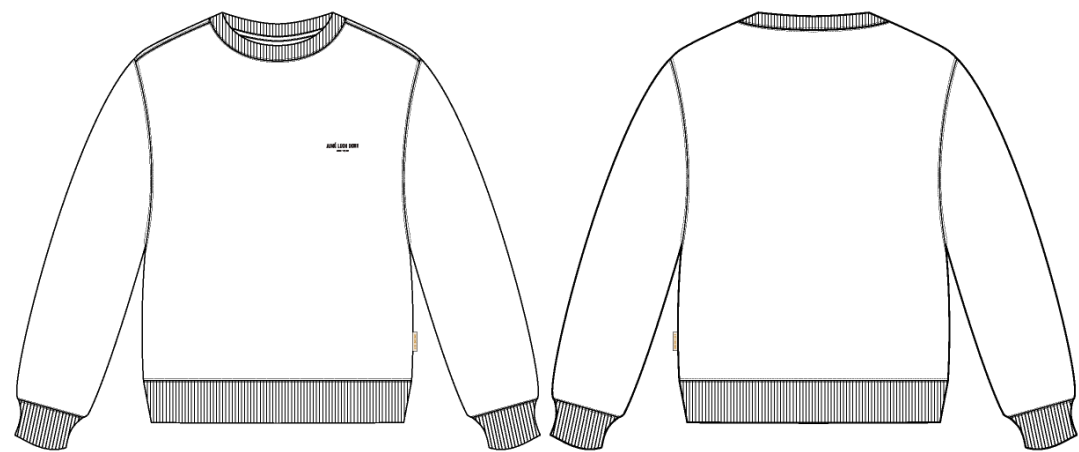


Micro Din Crewneck

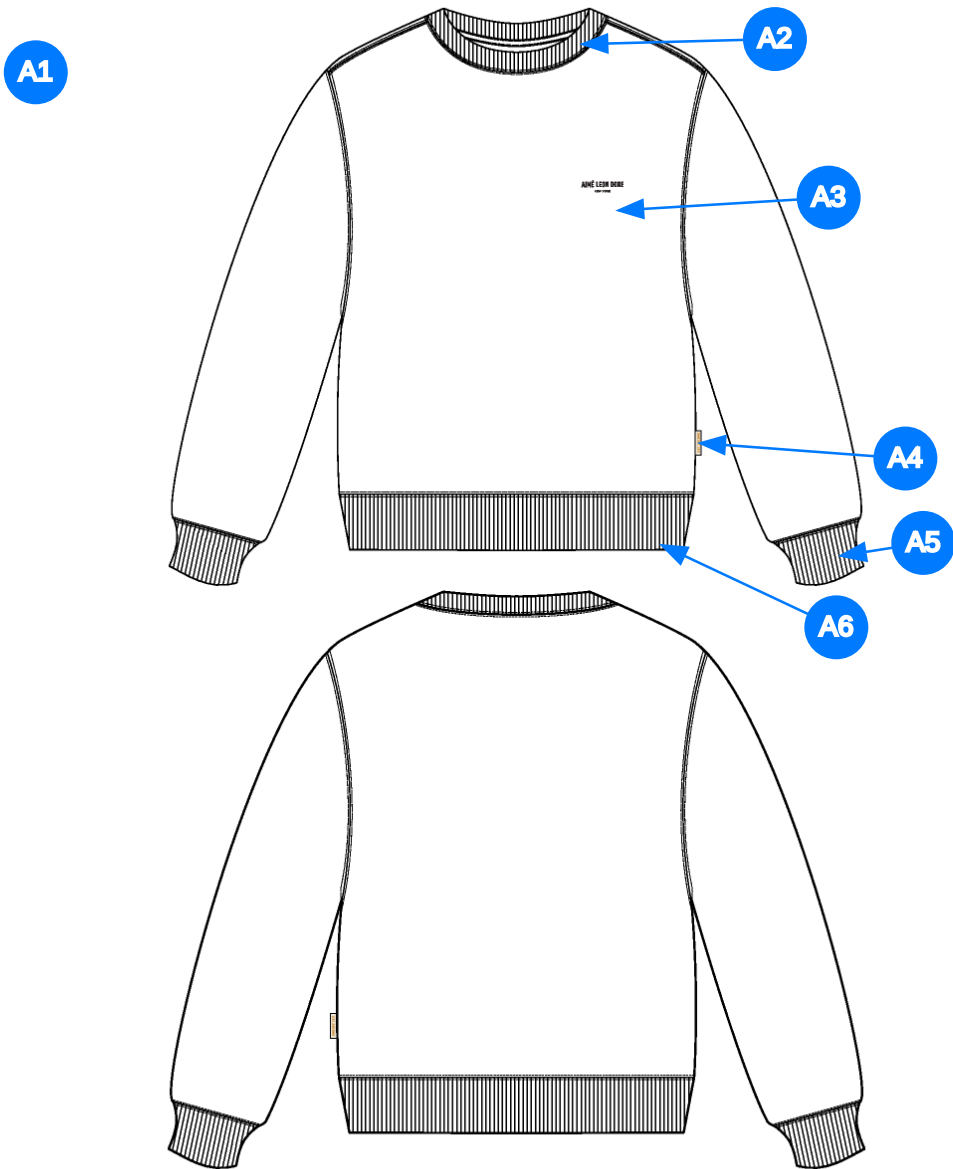
Name	Micro Din Crewneck
Style No.	NOSCS002
Division	Mens
Category	Sweatshirts
Season	Spring/Summer
Year	2025
Size Scale	<div>M</div> -Sample size <div><div>XS</div><div>S</div><div>M</div><div>L</div><div>XL</div><div>XXL</div></div>
Style Status	Adopted
Factory	UN-AVAILABLE
Designer Name	Lonz
TD Name	Anastasiya
Created by/Author	9/27/2024 Anastasiya Zolotova anastasiya.zolotova@aimeleondore.com



1\_B&W-1



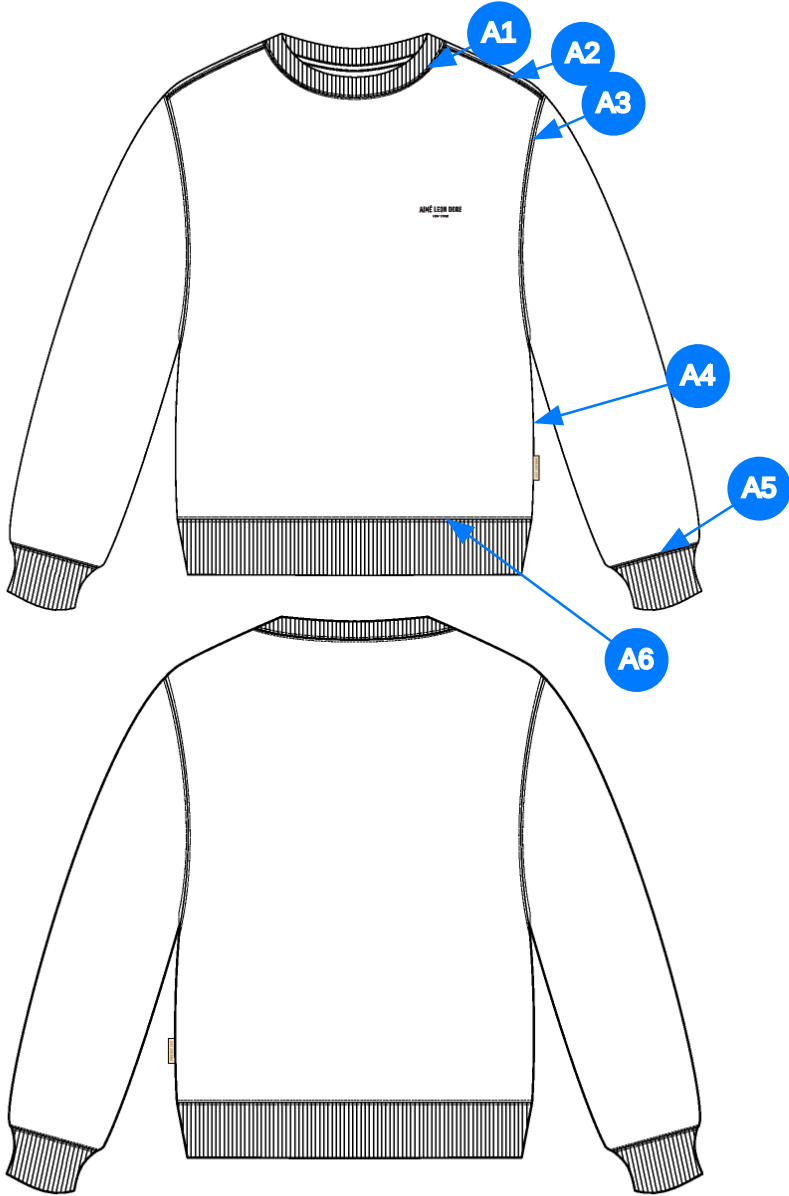
2\_CLR-1



Comments (6)

- A1 FIT: CREWNECK BLOCK
- A2 2X2 RIB DOUBLED @ COLLAR - HERRINGBONE TAPE ALONG NECK
- A3 ARTWORK @ WL CHEST - SEE SEPARATE ARTWORK FILE FOR DETAILS
- A4 ALD WOVEN LABEL @ SIDE SEAM
- A5 2X2 RIB DOUBLED @ SLEEVE CUFF - HERRINGBONE TAPE ALONG NECK
- A6 2X2 RIB DOUBLED @ BOTTOM HEM - HERRINGBONE TAPE ALONG NECK

3\_Construction Details-1



Comments (6)

- A1 STRADDLE STITCH @ NECK
- A2 STRADDLE STITCH @ SHOULDER
- A3 STRADDLE STITCH @ ARMHOLE
- A4 CLEAN SEAM FINISH @ SIDE SEAM
- A5 STRADDLE STITCH @ SLEEVE CUFF
- A6 STRADDLE STITCH @ BOTTOM HEM

4\_Stitching Details-1

Measured Size: M

POINT OF MEASURE	HOW TO MEASURE	CRITICAL	TYPE	TOLERANCE	EXPECTED	1ST FIT - RCVD	VARIANCE	ADJUST BY +/-	REVISED SPEC	MEASUREMENT NOTES
Front Body Length	HPS to bottom edge	true	Full	1/4 in	27 in	26 3/4 in	-1/4 in	0 in	27 in	
Back Body Length	CB neck seam to bottom edge	true	Full	1/4 in	25 3/4 in	25 3/4 in	0 in	0 in	25 3/4 in	
Shoulder Seam Forward	HPS to seam	false	Full	1/8 in	1/2 in	3/8 in	-1/8 in	0 in	1/2 in	
Shoulder Slope	Shoulder point perpendicular to HPS	false	Full	1/4 in	1 3/4 in	1 3/4 in	0 in	1/4 in	2 in	Increase
Front Neck Drop	HPS to neck seam	false	Full	1/8 in	4 in	4 in	0 in	0 in	4 in	
Back Neck Drop	HPS to neck seam	false	Full	1/8 in	1 1/4 in	1 1/4 in	0 in	0 in	1 1/4 in	
Back Neck Width	Seam to seam at back neck, at HPS point	false	Full	1/4 in	7 3/4 in	7 3/8 in	-3/8 in	0 in	7 3/4 in	Back to Spec
Neck Trim Height	Neck Seam to trim edge	false	Full	1/8 in	7/8 in	7/8 in	0 in	-1/16 in	13/16 in	Reduce
Minimum Neck Stretch		true	Half	0 in	11 1/2 in	0 in	0 in	0 in	11 1/2 in	
Across Shoulder	Seam to seam	false	Half	1/4 in	18 1/2 in	19 in	1/2 in	2 in	20 1/2 in	Increase
Across Front	7" dwn from HPS, Seam to seam	false	Half	1/4 in	17 1/4 in	17 1/4 in	0 in	1 3/4 in	19 in	Increase
Across Back	7" dwn from HPS, Seam to Seam	false	Half	1/4 in	17 3/4 in	17 3/4 in	0 in	1 3/4 in	19 1/2 in	Increase
Chest Width	1" Below armhole- edge to edge	true	Half	1/4 in	22 3/4 in	23 in	1/4 in	0 in	22 3/4 in	
Bottom Opening 2" Above Rib Knit Seam		true	Half	1/4 in	21 3/4 in	22 1/4 in	1/2 in	0 in	21 3/4 in	Back to Spec
Bottom Opening Width- At Seam	Straight with seam relaxed	true	Half	1/2 in	0 in	0 in	0 in	20 1/4 in	20 1/4 in	Keep As Sample
Bottom Opening Width- At Edge	At bottom edge	true	Half	1/4 in	17 in	17 in	0 in	0 in	17 in	
Bottom Hem Height	Bottom edge to stitch line or trim seam	false	Full	1/8 in	2 3/4 in	2 7/8 in	1/8 in	0 in	2 3/4 in	
Sleeve Length from CB Neck	3-point measure from CB Neck to shoulder point to sleeve edge	true	Full	1/2 in	35 in	34 1/2 in	-1/2 in	0 in	35 in	
Armhole Drop	Below HPS - measure perpendicular	false	Full	1/4 in	12 1/2 in	12 1/2 in	0 in	0 in	12 1/2 in	
Bicep Width	1" below armhole- edge to edge	false	Half	1/4 in	9 in	9 1/4 in	1/4 in	1/2 in	9 1/2 in	Increase
Forearm Width	9" up from sleeve cuff edge	false	Half	1/4 in	7 1/8 in	7 in	-1/8 in	1/8 in	7 1/4 in	Increase
Sleeve Opening Width 1" Above Rib Knit Seam		true	Half	1/4 in	5 3/8 in	5 1/4 in	-1/8 in	0 in	5 3/8 in	
Sleeve Opening Width- At Seam	Width at Seam	false	Half	1/4 in	0 in	0 in	0 in	4 3/4 in	4 3/4 in	Keep As Sample
Sleeve Opening Width- At Edge	At edge	false	Half	1/4 in	3 3/4 in	3 3/4 in	0 in	0 in	3 3/4 in	
Sleeve Cuff Height	Cuff edge to seam	false	Full	1/8 in	2 3/4 in	2 7/8 in	1/8 in	0 in	2 3/4 in	
WL Chest Artwork Placement from HPS to Top Edge		true	Full	1/8 in	7 in	6 3/4 in	-1/4 in	1 in	8 in	Follow Revised
WL Chest Artwork Placement Out from CF Line		false	Full	1/8 in	2 3/4 in	2 5/8 in	-1/8 in	0 in	2 3/4 in	
Loop Label Placement at Sideseam	Bottom edge to bottom of loop label, at the WL side seam	false	Full	1/8 in	7 in	6 3/4 in	-1/4 in	0 in	7 in	Back to Spec

1st Fit - Anastasiya Zolotova

CREATED ON SEP 27, 2024 8:52 PM  
1ST FIT: SIZE:M, CREATED AT: 09-23-2024

NOSCS002 Micro Din Crewneck  
**FITTING DATE:** 9/24/24  
**MODEL/ATTENDEES:** Anthony,Jessica,Lonz,Wes,Megan,Jeni,Anastasiya  
**STATUS:** 1st Fit Approved to PPS

**Trims:**  
Substitute Main Label

- Fit Comments:**  
**Align fit block changes with FB13 Crewneck Block**
- 1. Increase shoulder slope to 2"
  - 2. Reduce neck trim to 13/16"
  - 3. Neck width came in -3/8", go back to spec.
  - 4. Increase across shoulder 20 1/2"
  - 5. Increase across front 19"
  - 6. Increase across back 19 1/2"
  - 7. Bottom opening came in +1/2", go back to spec.
  - 8. Increase 9 1/2" on bicep
  - 9. Increase forearm to 7 1/4"
  - 10. Follow revised placement of WL chest artwork from HPS of 8".

- Fit comments:**  
điều chỉnh theo FB13 crewneck block
- 1. giảm xuôi vai 2"
  - 2. giảm to bản cổ 13/16"
  - 3. rộng cổ -3/8", điều chỉnh thông số trong dung sai
  - 4. tăng ngang vai 20 1/2"
  - 5. tăng ngang thân trước 19"
  - 6. tăng ngang thân sau 19 1/2"
  - 7. lại áo +1/2", điều chỉnh thông số trong dung sai
  - 8. tăng ngang bắp tay 9 1/2"
  - 9. tăng cẳng tay 7 1/4"
  - 10. thay đổi định vị hình in ngực trái từ đỉnh vai 8"





Screen Shot 2024-09-27 at 4.01.15 PM.jpg



NOSCS002				Size Specifications - Graded Measurements									
Sample Size: M		HOW TO MEASURE		CRITICAL	TYPE	TOLERANCE	M	PROTO - RCVD	VARIANCE	ADJUST BY +/-	REVISED	MEASUREMENT NOTES	
Front Body Length	DÀI ÁO THÂN TRƯỚC	HPS to bottom edge	TỪ ĐỈNH VAI ĐẾN MÉP LẠI	true	Full	1/4 in	27 in	26 3/4 in	-1/4 in	0 in	27 in		
Back Body Length	DÀI ÁO THÂN SAU	CB neck seam to bottom edge	GIỮA CỔ SAU ĐẾN MÉP LẠI	true	Full	1/4 in	25 3/4 in	25 3/4 in	0 in	0 in	25 3/4 in		
Shoulder Seam Forward	CHỖM VAI	HPS to seam	ĐỈNH VAI ĐẾN ĐƯỜNG MAY	false	Full	1/8 in	1/2 in	3/8 in	-1/8 in	0 in	1/2 in		
Shoulder Slope	XUÔI VAI	Shoulder point perpendicular to HPS	ĐO TỪ NGANG VAI ĐẾN ĐIỂM NGANG ĐẦU VAI	false	Full	1/4 in	1 3/4 in	1 3/4 in	0 in	1/4 in	2 in	Increase TĂNG	
Front Neck Drop	HẠ CỔ TRƯỚC	HPS to neck seam	TỪ ĐỈNH VAI ĐẾN ĐƯỜNG MAY CỔ	false	Full	1/8 in	4 in	4 in	0 in	0 in	4 in		
Back Neck Drop	HẠ CỔ SAU	HPS to neck seam	TỪ ĐỈNH VAI ĐẾN ĐƯỜNG MAY CỔ	false	Full	1/8 in	1 1/4 in	1 1/4 in	0 in	0 in	1 1/4 in		
Back Neck Width	NGANG CỔ SAU	Seam to seam at back neck, at HPS point	TỪ ĐƯỜNG MAY ĐẾN ĐƯỜNG MAY TẠI CỔ SAU	false	Full	1/4 in	7 3/4 in	7 3/8 in	-3/8 in	0 in	7 3/4 in	Back to Spec ĐIỀU CHỈNH THÔNG SỐ TRONG DUNG SAI	
Neck Trim Height	TO BÁN BÒ CỔ	Neck Seam to trim edge	TỪ ĐƯỜNG TRÁ CỔ ĐẾN MÉP BÒ	false	Full	1/8 in	7/8 in	7/8 in	0 in	-1/16 in	13/16 in	Reduce GIẢM	
Minimum Neck Stretch	RỘNG CỔ ĐO CĂNG TỐI THIỂU			true	Half	0 in	11 1/2 in	0 in	0 in	0 in	11 1/2 in		
Across Shoulder	NGANG VAI	Seam to seam	TỪ ĐƯỜNG MAY ĐẾN ĐƯỜNG MAY	false	Half	1/4 in	18 1/2 in	19 in	1/2 in	2 in	20 1/2 in	Increase TĂNG	
Across Front	NGANG NGỰC	7" dwn from HPS, Seam to seam	HẠ 7" TỪ CAO VAI, ĐO TỪ ĐƯỜNG MAY ĐẾN ĐƯỜNG MAY	false	Half	1/4 in	17 1/4 in	17 1/4 in	0 in	1 3/4 in	19 in	Increase TĂNG	
Across Back	NGANG LƯNG	7" dwn from HPS, Seam to Seam	HẠ 7" TỪ CAO VAI, ĐO TỪ ĐƯỜNG MAY ĐẾN ĐƯỜNG MAY	false	Half	1/4 in	17 3/4 in	17 3/4 in	0 in	1 3/4 in	19 1/2 in	Increase TĂNG	
Chest Width	RỘNG NGỰC	1" Below armhole- edge to edge	HẠ 1" DƯỚI NGÃ TỪ NÁCH, ĐO TỪ MÉP ĐẾN MÉP	true	Half	1/4 in	22 3/4 in	23 in	1/4 in	0 in	22 3/4 in		
Bottom Opening 2" Above Rib Knit Seam	NGANG LẠI ÁO - 2" TRÊN ĐƯỜNG MAY RIB			true	Half	1/4 in	21 3/4 in	22 1/4 in	1/2 in	0 in	21 3/4 in	Back to Spec ĐIỀU CHỈNH THÔNG SỐ TRONG DUNG SAI	
Bottom Opening Width- At Seam	LẠI ÁO - TẠI ĐƯỜNG MAY	Straight with seam relaxed	ĐO THẲNG VỚI ĐƯỜNG MAY ĐỂ ẸM	true	Half	1/2 in	0 in	0 in	0 in	20 1/4 in	20 1/4 in	Keep As Sample GIỮ NHƯ MẪU	
Bottom Opening Width- At Edge	LẠI ÁO - TẠI MÉP	At bottom edge	TẠI MÉP LẠI	true	Half	1/4 in	17 in	17 in	0 in	0 in	17 in		
Bottom Hem Height	TO BÁN LẠI ÁO	Bottom edge to stitch line or trim seam	TỪ MÉP ĐẾN ĐƯỜNG ĐIỀU	false	Full	1/8 in	2 3/4 in	2 7/8 in	1/8 in	0 in	2 3/4 in		
Sleeve Length from CB Neck	DÀI TAY TỪ GIỮA CỔ SAU	3-point measure from CB Neck to shoulder point to sleeve	ĐO 3 ĐIỂM TỪ GIỮA CỔ SAU ĐẾN ĐIỂM VAI ĐẾN	true	Full	1/2 in	35 in	34 1/2 in	-1/2 in	0 in	35 in		
Armhole Drop	HẠ NÁCH	Below HPS - measure perpendicular	HẠ TỪ CAO VAI ĐẾN ĐIỂM NGANG NGÃ TỪ NÁCH	false	Full	1/4 in	12 1/2 in	12 1/2 in	0 in	0 in	12 1/2 in		

Bicep Width	NGANG BẮP TAY	1" below armhole- edge to edge	HẠ 1" DƯỚI NGÃ TƯ NÁCH, ĐO TỪ MÉP ĐẾN MÉP	false	Half	1/4 in	9 in	9 1/4 in	1/4 in	1/2 in	9 1/2 in	Increase TĂNG
Forearm Width	CĂNG TAY	9" up from sleeve cuff edge	9" TỪ MÉP LẠI TAY	false	Half	1/4 in	7 1/8 in	7 in	-1/8 in	1/8 in	7 1/4 in	Increase TĂNG
Sleeve Opening Width 1" Above Rib Knit Seam	CỬA TAY :1" LÊN TỪ ĐƯỜNG MAY RIB			true	Half	1/4 in	5 3/8 in	5 1/4 in	-1/8 in	0 in	5 3/8 in	
Sleeve Opening Width- At Seam	CỬA TAY - TẠI ĐƯỜNG MAY	Width at Seam	RỘNG TẠI ĐƯỜNG MAY	false	Half	1/4 in	0 in	0 in	0 in	4 3/4 in	4 3/4 in	Keep As Sample GIỮ NHƯ MẪU
Sleeve Opening Width- At Edge	CỬA TAY - TẠI MÉP	At edge	TẠI MÉP LẠI	false	Half	1/4 in	3 3/4 in	3 3/4 in	0 in	0 in	3 3/4 in	
Sleeve Cuff Height	TỜ BÀN LẠI TAY	Cuff edge to seam	MÉP LẠI ĐẾN ĐƯỜNG MAY	false	Full	1/8 in	2 3/4 in	2 7/8 in	1/8 in	0 in	2 3/4 in	
WL Chest Artwork Placement from HPS to Top Edge	ĐỊNH VỊ HÌNH IN NGỰC TRÁI TỪ ĐỈNH VAI ĐẾN ĐỈNH HÌNH IN			true	Full	1/8 in	7 in	6 3/4 in	-1/4 in	1 in	8 in	Follow Revised THAY ĐỔI
WL Chest Artwork Placement Out from CF Line	ĐỊNH VỊ HÌNH IN NGỰC TRÁI TỪ GIỮA TRƯỚC			false	Full	1/8 in	2 3/4 in	2 5/8 in	-1/8 in	0 in	2 3/4 in	
Loop Label Placement at Sideseam	VỊ TRÍ NHÃN SƯỜN	Bottom edge to bottom of loop label, at the WL side seam	MÉP LẠI ĐẾN MÉP LOGO, TẠI SƯỜN TRÁI BÊN NGOÀI	false	Full	1/8 in	7 in	6 3/4 in	-1/4 in	0 in	7 in	Back to Spec ĐIỀU CHỈNH THÔNG SỐ TRONG DUNG SAI