

Name	Din Logo Hoodie - UA
Style No.	SS22CH008
Division	Mens
Category	Sweatshirts
Season	Spring/Summer
Year	2022
Size Scale	M -Sample size
	<div>XS S M L XL XXL</div>
Style Status	Development
Factory	UN-AVAILABLE
Created by/Author	5/7/2024 Jeni Fitzgerald jeni.fitzgerald@aimeleondore.com

Din Logo Hoodie - UA



1_B+W



JET BLACK
- RIB: DTM
- DRAWCORDS: DTM
- EYELETS: ANTIQUE BRASS



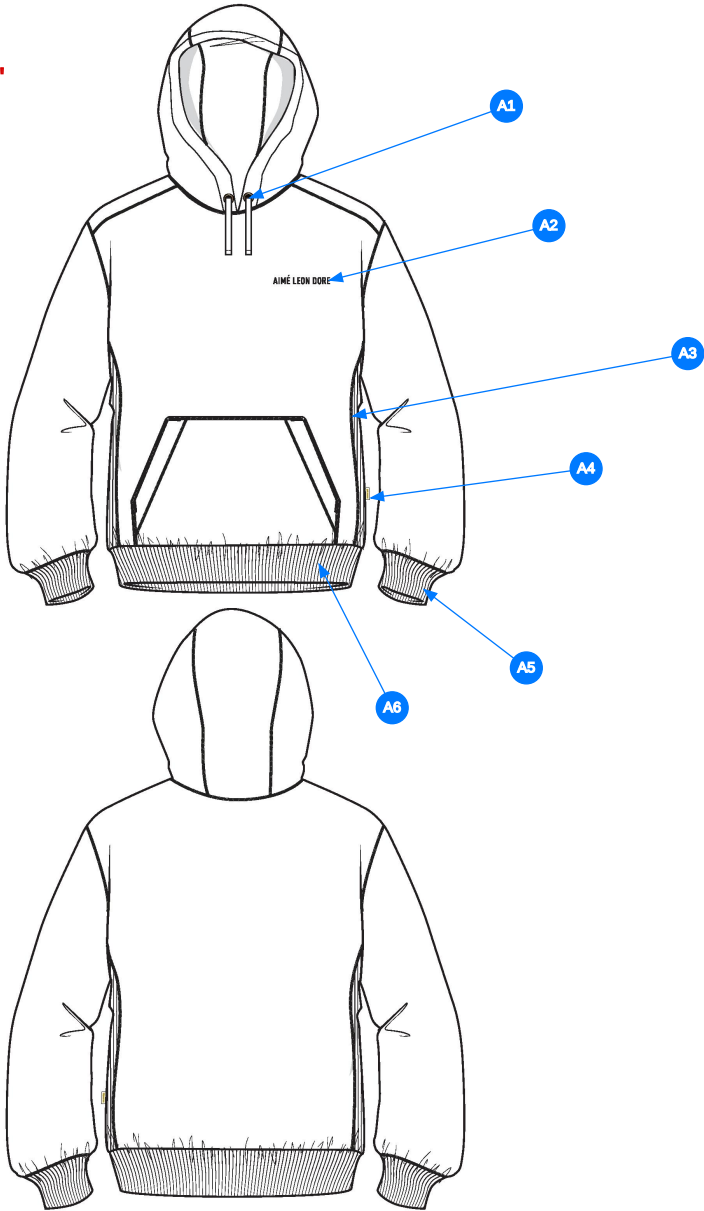
EVENING BLUE
- RIB: DTM
- DRAWCORDS: DTM
- EYELETS: ANTIQUE BRASS



OATMEAL
- RIB: DTM
- DRAWCORDS: DTM
- EYELETS: ANTIQUE BRASS

2_CLR

SAME CONSTRUCTION AS
FW21 '20oz Terry Logo Hoodie'



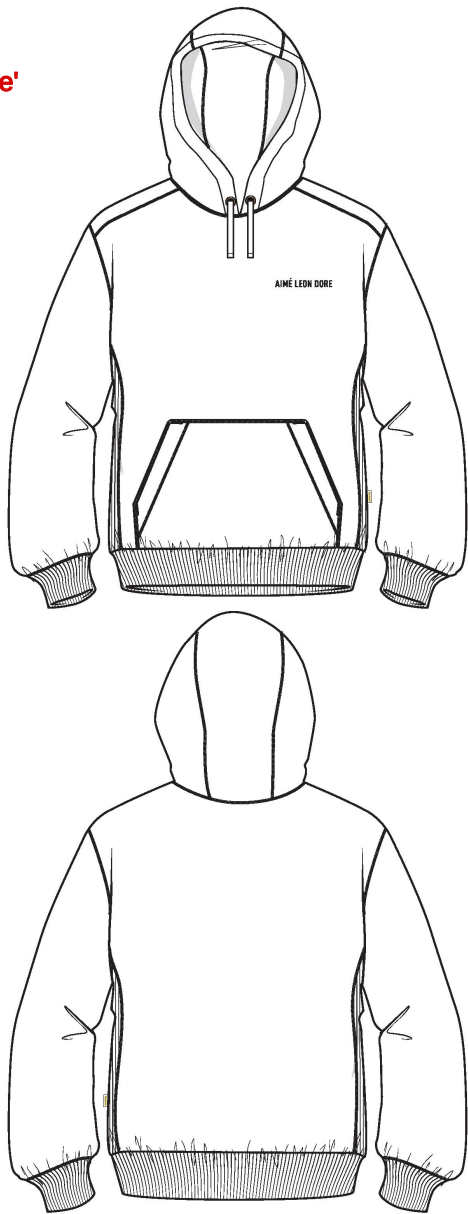
3_CONSTRUCTION DETAILS

Comments (6)

- A1 SAME DRAWCORDS AND METAL EYELETS AS SS21 "20oz Terry Logo Hoodie"
- A2 EMBROIDERED ARTWORK - SEE FOLLOWING PAGES FOR DETAILS - SEE SEPARATE FILE FOR ACTUAL SIZE ARTWORK
- A3 2X2 RIB @ SIDE PANELS - RIB DOUBLED
- A4 ALD WOVEN LOOP LABEL @ SIDE SEAM
- A5 2X2 RIB DOUBLED @ SLEEVE CUFFS
- A6 2X2 RIB DOUBLED @ BOTTOM HEM

- 1. DÂY LUỒN COTTON DẸP, MẮT CÁO METAL TẠI NÓN.
- 2. HÌNH THÊU TẠI NGỰC TRÁI - XEM CHI TIẾT TẠI FILE ARTWORK RIÊNG CHO KÍCH THƯỚC HÌNH THÊU
- 3. RIB 2X2 TẠI PHỐI SƯỜN - 2 LỚP
- 4. RIB 2X2 GẤP ĐÔI TẠI LAI TAY
- 5. RIB 2X2 GẤP ĐÔI TẠI LAI ÁO

SAME STITCHING AS
FW21 '20oz Terry Logo Hoodie'



4_STITCHING DETAILS

ARTWORK STRIKE-OFF REQUEST
- NEED TO SEE S/O ON ALL COLORWAYS
- ARTWORK IS A DIRECT EMBROIDERY

ARTWORK NOT SHOWN TO ACTUAL SIZE

AIMÉ LEON DORE



AIMÉ LEON DORE ISACORD 40 - #0021

AIMÉ LEON DORE ISACORD 40 - #3355

AIMÉ LEON DORE ISACORD 40 - #0874

5_ARTWORK DETAILS

Sample Size: M

POINT OF MEASURE	CODE	HOW TO MEASURE	CRITICAL	TYPE	TOLERANCE	M
Front Body Length	S&K01	HPS to bottom edge	true	Full	1/2 in	27 in
Back Body Length	S&K02	CB neck seam to bottom edge	true	Full	1/2 in	26 1/4 in
Front Neck Drop	S&K04	HPS to neck seam	false	Full	1/8 in	2 3/4 in
Back Neck Drop	S&K05	HPS to neck seam	false	Full	1/8 in	3/4 in
Back Neck Width	S&K06	Seam to seam at back neck, at HPS point	false	Full	1/4 in	9 1/4 in
Shoulder Seam Forward	S&K07	HPS to seam	false	Full	1/8 in	1/2 in
Shoulder Slope	S&K08	Shoulder point perpendicular to HPS	false	Full	1/4 in	1 3/4 in
Across Shoulder	S&K09	Seam to seam	false	Half	3/8 in	19 in
Across Front	S&K010	7" dwn from HPS, Seam to seam	false	Half	3/8 in	17 3/4 in
Across Back	S&K011	7" dwn from HPS, Seam to Seam	false	Half	3/8 in	18 in
Chest Width	S&K012	1" Below armhole- edge to edge	true	Half	1/2 in	24 in
Bottom Opening Width- At Seam	S&K108	Straight with seam relaxed	true	Half	1/2 in	19 1/2 in
Bottom Opening Width- At Edge	S&K013	At bottom edge	true	Half	1/2 in	17 in
Bottom Trim Height	S&K83	Bottom edge to top of trim	false	Full	1/8 in	3 1/4 in
Sleeve Length from CB Neck	S&K032	3-point measure from CB Neck to shoulder point to sleeve edge	true	Full	1/2 in	35 in
Armhole Drop	S&K016	Below HPS - measure perpendicular	false	Full	1/4 in	11 in
Bicep Width	S&K017	1" below armhole- edge to edge	false	Half	1/4 in	8 3/4 in
Forearm Width	S&K033	9" up from sleeve cuff edge	false	Half	1/4 in	6 1/2 in
Sleeve Opening Width- At Seam	S&K034	Width at Seam	false	Half	1/4 in	5 in
Sleeve Opening Width- At Edge	S&K73	At edge	false	Half	1/4 in	4 in
Sleeve Cuff Height	S&K36	Cuff edge to seam	false	Full	1/8 in	3 1/4 in
Hood Height at CF	S&K40	From neck seam to top edge	false	Half	3/8 in	15 3/4 in
Hood Width 6" Below Top Edge	S&K41	Straight from CF edge to CB seam- 6" down	false	Half	3/8 in	10 3/4 in
Kangaroo Pocket Height At Center	S&K44	Height at center	false	Full	1/4 in	8 1/2 in
Kangaroo Pocket Width at Top Edge	S&K45	Width at top edge	false	Full	1/4 in	9 3/4 in
Kangaroo Pocket Width at Bottom	S&K46	Width at Bottom Edge	false	Full	1/4 in	13 in
Front Logo Placement below CF Neckline	S&K21		false	Full	1/4 in	4 1/2 in
Front Logo Placement out from the CF Line	S&K022		false	Full	1/8 in	2 1/4 in
Loop Label Placement at Sideseam	S&K023	Bottom edge to bottom of loop label, at the WL side seam	false	Full	1/8 in	7 in

Development Notes - Anastasiya Zolotova

CREATED ON MAY 7, 2024 12:25 AM

SS22CH008 Din Logo Hoodie
Date: 5/7/24
Status: Requesting 1st Proto
TD: Anastasiya

Fit: Follow measurement page, construction page, design sketch, and reference sample to create 1st proto.

FIT: THAM KHẢO TRANG THÔNG SỐ, TRANG CẤU TRÚC VÀ MẪU THAM KHẢO ĐỂ LÀM MẪU PROTO

COMPONENT		QTY	1. ● JET BLACK CODE: 19-0303 TCX
1	UA Loop Back Heavy Fleece CODE: C2300234 French Terry Placement: BODY / PATCH POCKET Supplier: UNAVAILABLE Weight: 560gsm		- ● Jet Black Custom Code: 19-0303 TCX Price: 0.00
2	IN DEV CODE: TBD Placement: CUFFS, HEM, DOUBLE AT SIDE PANELS SIDE BODY Notes: 2X2 RIB DOUBLED AT SIDE PANELS		- IN DEV Price: 0.00
3	Full Logo'd(Debossed) Metal Grommet CODE: NT-21867a Placement: DRAWCORD EXIT Supplier: Nice Trim	2	- ○ ANTIQUE BRASS Custom Code: NT-128 SIZE: 15L Price: 0.00
4	SS24-CFDW CODE: UA Cotton Flat Drawcord Placement: DRAWCORD TUNNEL @ HOOD Supplier: UNAVAILABLE		- ● Jet Black Custom Code: 19-0303 TCX Price: 0.00
5	HERRINGBONE TAPE CODE: TBD Placement: STRADDLED OVER BACK NECK SEAM F/ SH TO SH Supplier: Factory Sourced	1	- ● Jet Black Custom Code: 19-0303 TCX SIZE: 3/8" Price: 0.00
6	ARTWORK CODE: EMBROIDERY Placement: WEARERS LEFT CHEST (FOLLOW POM) Notes: 4" DIN LOGO Supplier: Factory Sourced	1	- ARTWORK Price: 0.00
7	Isacord Thread CODE: ISACORD Notes: 4" DIN LOGO		- ○ 0021 Custom Code: JET BLACK 19-0303 TCX Price: 0.00
LABEL + TRIM PACKAGE			
8	ALD Woven Main Label W/ Size CODE: ALD-ML03 Placement: INTERIOR CENTER BACK NECK, 3/4" BELOW SEAM, TACK FOUR CORNERS AT 45 DEGREE ANGLE Supplier: Colonial Country of Origin: CHINA	1 Piece	- ALD Woven Main Label W/ Size Price: 0.079
9	DIN Side Seam Label CODE: AI-DSSM-R1 Placement: WEARERS LEFT SIDE SEAM (FOLLOW POM) Supplier: Original Brand	1	- ○ Parmesan Base / Gold Text Price: 0.00
10	ALD Hangtag CODE: ALD-T06P Placement: WEARER'S LEFT ARMHOLE ABOVE SIDE SEAM Supplier: Colonial Country of Origin: CHINA	1 Piece	- ALD Hangtag Price: 0.22
11	ALD Branded Polybag - 15" X 18" (RECYCLED) CODE: ALD-PB02-R Supplier: Colonial Country of Origin: CHINA	1 Piece	- ALD Branded Polybag - 15" x 18" (RECYCLED) Price: 0.29
12	ALD Woven Care + Content + COO Label CODE: ALD-COO-XXX Placement: INTERIOR WEARER'S LEFT SIDE SEAM, 5" ABOVE BODY HEM Supplier: Colonial Country of Origin: CHINA	1 Piece	- ALD Woven Care + Content + COO Label Price: 0.058

COMPONENT		QTY	1. ● JET BLACK CODE: 19-0303 TCX
13	UPC Sticker CODE: UPC Placement: POLY BAG; BACK SIDE, UPPER RIGHT HAND CORNER Supplier: Factory Sourced	1	- UPC Sticker Price: 0.00
Components		13	Total 0.647

SS22CH008		THÔNG SỐ						
Sample Size: M POINT OF MEASURE		CODE	HOW TO MEASURE		CRITICAL	TYPE	TOLERANCE	EXPECTED
Front Body Length	DÀI ÁO THÂN TRƯỚC	S&K01	HPS to bottom edge	TỪ ĐỈNH VAI ĐẾN MÉP LẠI	true	Full	1/2 in	27 in
Back Body Length	DÀI ÁO THÂN SAU	S&K02	CB neck seam to bottom edge	TỪ GIỮA CỔ SAU ĐẾN MÉP LẠI	true	Full	1/2 in	26 1/4 in
Front Neck Drop	HẠ CỔ TRƯỚC	S&K04	HPS to neck seam	TỪ ĐỈNH VAI ĐẾN ĐƯỜNG MAY CỔ	false	Full	1/8 in	2 3/4 in
Back Neck Drop	HẠ CỔ SAU	S&K05	HPS to neck seam	TỪ ĐỈNH VAI ĐẾN ĐƯỜNG MAY CỔ	false	Full	1/8 in	3/4 in
Back Neck Width	RỘNG CỔ SAU	S&K06	Seam to seam at back neck, at HPS point	TỪ ĐƯỜNG MAY ĐẾN ĐƯỜNG MAY TẠI CỔ SAU, ĐẾN ĐIỂM VAI	false	Full	1/4 in	9 1/4 in
Shoulder Seam Forward	CHÒM VAI	S&K07	HPS to seam	ĐỈNH VAI ĐẾN ĐƯỜNG MAY	false	Full	1/8 in	1/2 in
Shoulder Slope	XUÔI VAI	S&K08	Shoulder point perpendicular to HPS	XUÔI VAI ĐO TỪ NGANG VAI ĐẾN ĐIỂM NGANG ĐỈNH VAI	false	Full	1/4 in	1 3/4 in
Across Shoulder	NGANG VAI	S&K09	Seam to seam	ĐM ĐẾN ĐM	false	Half	3/8 in	19 in
Across Front	NGANG THÂN TRƯỚC	S&K010	7" dwn from HPS, Seam to seam	HẠ 7" TỪ ĐỈNH VAI, TỪ ĐƯỜNG MAY ĐẾN ĐƯỜNG MAY	false	Half	3/8 in	17 3/4 in
Across Back	NGANG THÂN SAU	S&K011	7" dwn from HPS, Seam to Seam	HẠ 7" TỪ ĐỈNH VAI, TỪ ĐƯỜNG MAY ĐẾN ĐƯỜNG MAY	false	Half	3/8 in	18 in
Chest Width	RỘNG NGỰC	S&K012	1" Below armhole- edge to edge	DƯỚI NÁCH 1" - TỪ MÉP ĐẾN MÉP	true	Half	1/2 in	24 in
Bottom Opening Width- At Seam	RỘNG LẠI ÁO - TẠI ĐƯỜNG MAY	S&K108	Straight with seam relaxed	ĐO THẲNG ĐƯỜNG MAY, ĐO ẸM	true	Half	1/2 in	19 1/2 in
Bottom Opening Width- At Edge	RỘNG LẠI ÁO - TẠI MÉP	S&K013	At bottom edge	TẠI MÉP	true	Half	1/2 in	17 in
Bottom Trim Height	TO BÀN LẠI ÁO	S&K83	Bottom edge to top of trim	MÉP ĐẾN ĐƯỜNG ĐIỀU	false	Full	1/8 in	3 1/4 in
Sleeve Length from CB Neck	DÀI TAY TỪ GIỮA CỔ SAU	S&K032	3-point measure from CB Neck to shoulder point to sleeve edge	3 ĐIỂM - TỪ GIỮA CỔ SAU ĐẾN ĐIỂM VAI ĐẾN MÉP TAY	true	Full	1/2 in	35 in
Armhole Drop	HẠ NÁCH	S&K016	Below HPS - measure perpendicular	DƯỚI ĐỈNH VAI - VUÔNG GÓC	false	Full	1/4 in	11 in
Bicep Width	RỘNG BÁP TAY	S&K017	1" below armhole- edge to edge	DƯỚI NÁCH 1" - TỪ MÉP ĐẾN MÉP	false	Half	1/4 in	8 3/4 in

Forearm Width	RỘNG CĂNG TAY	S&K033	9" up from sleeve cuff edge	TỪ MÉP LAI TAY LÊN 9"	false	Half	1/4 in	6 1/2 in
Sleeve Opening Width- At Seam	RỘNG LAI TAY - TẠI ĐƯỜNG MAY	S&K034	Width at Seam	RỘNG TẠI ĐƯỜNG MAY	false	Half	1/4 in	5 in
Sleeve Opening Width- At Edge	RỘNG LAI ÁO - TẠI MÉP	S&K73	At edge	TẠI MÉP	false	Half	1/4 in	4 in
Sleeve Cuff Height	TO BÀN LAI TAY	S&K36	Cuff edge to seam	MÉP ĐẾN ĐƯỜNG MAY	false	Full	1/8 in	3 1/4 in
Hood Height at CF	CAO NÓN TẠI GIỮA TRƯỚC	S&K40	From neck seam to top edge	MÉP ĐẾN ĐƯỜNG MAY CỔ	false	Half	3/8 in	15 3/4 in
Hood Width 6" Below Top Edge	RỘNG NÓN DƯỚI MÉP 6"	S&K41	Straight from CF edge to CB seam- 6" down	HẠ 6" TỪ MÉP GIỮA TRƯỚC NÓN ĐẾN ĐƯỜNG MAY GIỮA SAU	false	Half	3/8 in	10 3/4 in
Kangaroo Pocket Height At Center	CAO TÚI KANGAROO TẠI GIỮA TRƯỚC	S&K44	Height at center	CAO TẠI GIỮA	false	Full	1/4 in	8 1/2 in
Kangaroo Pocket Width at Top Edge	RỘNG TÚI KANGAROO TẠI MÉP TRÊN	S&K45	Width at top edge	RỘNG TẠI CẠNH TRÊN	false	Full	1/4 in	9 3/4 in
Kangaroo Pocket Width at Bottom	RỘNG TÚI KANGAROO TẠI MÉP DƯỚI	S&K46	Width at Bottom Edge	RỘNG TẠI CẠNH DƯỚI	false	Full	1/4 in	13 in
Front Logo Placement below CF Neckline	ĐỊNH VỊ HÌNH THÊU NGỰC TRÁI DƯỚI VIỀN CỔ TRƯỚC	S&K21			false	Full	1/4 in	4 1/2 in
Front Logo Placement out from the CF Line	ĐỊNH VỊ HÌNH THÊU NGỰC TRÁI TỪ GIỮA TRƯỚC	S&K022			false	Full	1/8 in	2 1/4 in
Loop Label Placement at Sideseam	VỊ TRÍ NHÃN SƯỜN NGOÀI	S&K023	Bottom edge to bottom of loop label, at the WL side seam	NHÃN SƯỜN: MAY SƯỜN TRÁI NGƯỜI MẶC - TỪ MÉP LAI ĐẾN CẠNH DƯỚI NHÃN	false	Full	1/8 in	7 in