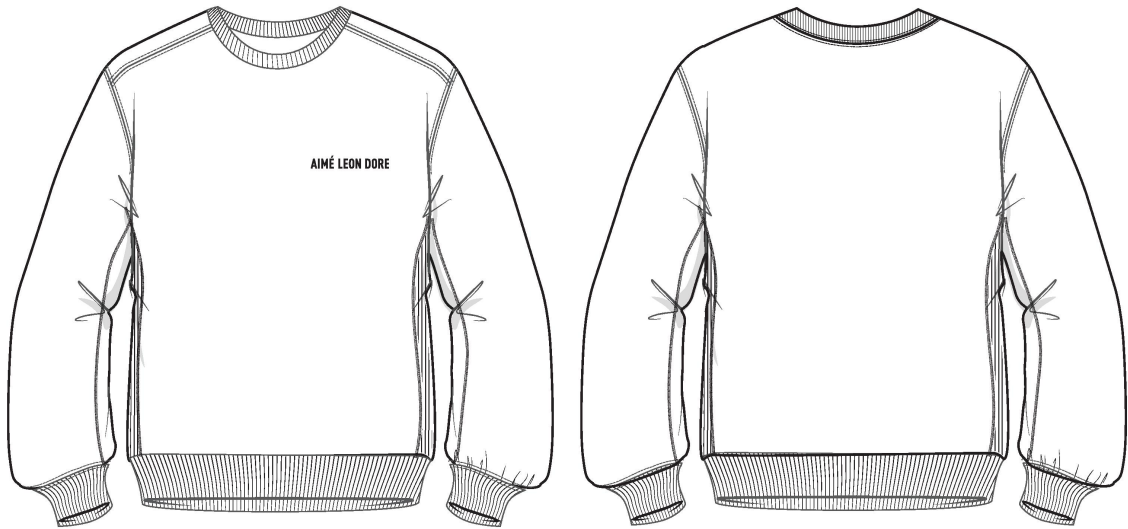


Name	DIN Logo Crewneck - UA
Style No.	SS22CS013
Division	Mens
Category	Sweatshirts
Season	SS22
Year	2022
Size Scale	<div>M</div> -Sample size
	<div>XS</div> <div>S</div> <div>M</div> <div>L</div> <div>XL</div> <div>XXL</div>
Style Status	Development
Factory	UN-AVAILABLE
Created by/Author	5/7/2024 Jeni Fitzgerald jeni.fitzgerald@aimeleondore.com

DIN Logo Crewneck - UA



1_B+W



JET BLACK
- RIB: DTM



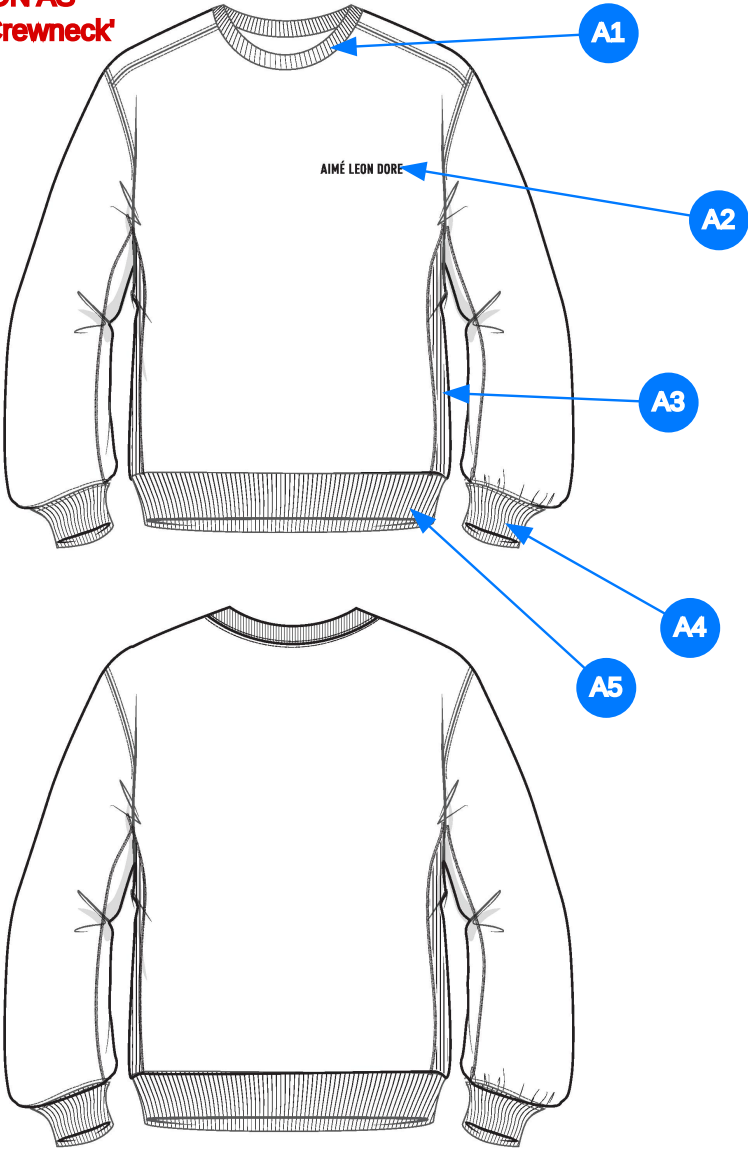
EVENING BLUE
- RIB: DTM



OATMEAL
- RIB: DTM

2_CLR

**SAME CONSTRUCTION AS
FW21 '20oz Terry Logo Crewneck'**



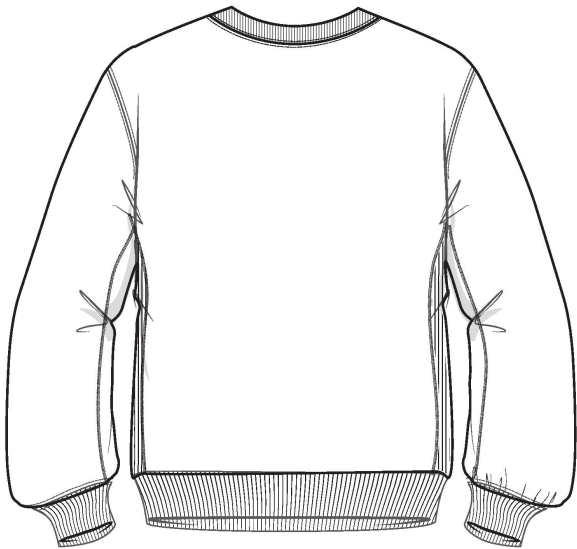
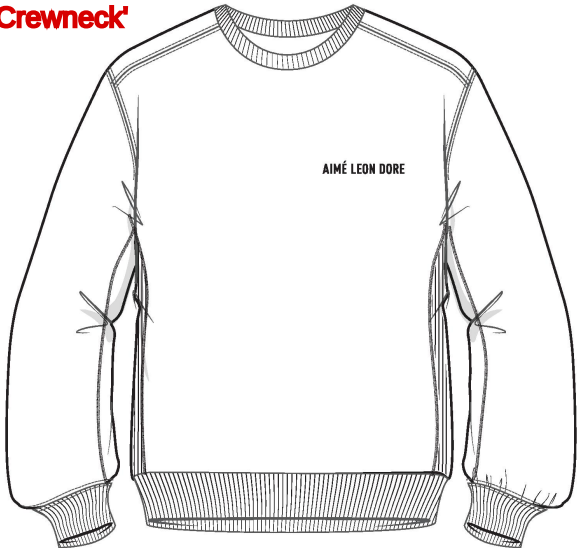
Comments (5)

- A1** DOUBLED 2x2 RIB TRIM
- A2** EMBROIDERED ARTWORK - SEE FOLLOWING PAGES FOR DETAILS - SEE SEPARATE FILE FOR ACTUAL SIZE ARTWORK - SEE SPEC PAGE FOR PLACEMENT
- A3** SIDE RIB PANEL
- A4** DOUBLED 2x1 RIB SLEEVE CUFF
- A5** DOUBLED 2x1 RIB WAISTBAND

- 1. RIB 1X1 GẤP ĐÔI TẠI CỔ
- 2. HÌNH THÊU TẠI NGỰC TRÁI - XEM FILE ARTWORK RIÊNG CHO KÍCH THƯỚC - XEM TRANG THÔNG SỐ CHO VỊ TRÍ HÌNH THÊU
- 3. PHỐI SƯỜN BẰNG VẢI RIB
- 4. RIB 2X1 GẤP ĐÔI TẠI LẠI TAY
- 5. RIB 2X1 GẤP ĐÔI TẠI LẠI ÁO

3_CONSTRUCTION DETAILS

**SAME STITCHING AS
FW21 '20oz Terry Logo Crewneck'**



4_STITCHING DETAILS

ARTWORK STRIKE-OFF REQUEST
- NEED TO SEE S/O ON ALL COLORWAYS
- ARTWORK IS A DIRECT EMBROIDERY

ARTWORK NOT SHOWN TO ACTUAL SIZE

AIMÉ LEON DORE



AIMÉ LEON DORE ISACORD 40 - #0021

AIMÉ LEON DORE ISACORD 40 - #3355

AIMÉ LEON DORE ISACORD 40 - #0874

5_ARTWORK DETAILS

Sample Size: M

POINT OF MEASURE	CODE	HOW TO MEASURE	CRITICAL	TYPE	TOLERANCE	M
Front Body Length	S&K01	HPS to bottom edge	true	Full	1/2 in	27 in
Back Body Length	S&K02	CB neck seam to bottom edge	true	Full	1/2 in	25 3/4 in
Front Neck Drop	S&K04	HPS to neck seam	false	Full	1/8 in	3 3/4 in
Back Neck Drop	S&K05	HPS to neck seam	false	Full	1/8 in	1 1/4 in
Back Neck Width	S&K06	Seam to seam at back neck, at HPS point	false	Full	1/4 in	7 3/4 in
Shoulder Seam Forward	S&K07	HPS to seam	false	Full	1/8 in	1/2 in
Shoulder Slope	S&K08	Shoulder point perpendicular to HPS	false	Full	1/4 in	1 3/4 in
Across Shoulder	S&K09	Seam to seam	false	Half	3/8 in	18 1/4 in
Across Front	S&K010	7" dwn from HPS, Seam to seam	false	Half	3/8 in	17 1/4 in
Across Back	S&K011	7" dwn from HPS, Seam to Seam	false	Half	3/8 in	17 3/4 in
Chest Width	S&K012	1" Below armhole- edge to edge	true	Half	1/2 in	24 in
Bottom Opening Width- At Seam	S&K108	Straight with seam relaxed	true	Half	1/2 in	19 1/2 in
Bottom Opening Width- At Edge	S&K013	At bottom edge	true	Half	1/2 in	17 in
Bottom Hem Height	S&K014	Bottom edge to stitch line or trim seam	false	Full	1/8 in	3 1/4 in
Sleeve Length from CB Neck	S&K032	3-point measure from CB Neck to shoulder point to sleeve edge	true	Full	1/2 in	35 in
Armhole Drop	S&K016	Below HPS - measure perpendicular	false	Full	1/4 in	11 1/4 in
Bicep Width	S&K017	1" below armhole- edge to edge	false	Half	1/4 in	8 3/4 in
Forearm Width	S&K033	9" up from sleeve cuff edge	false	Half	1/4 in	6 3/4 in
Sleeve Opening Width- At Seam	S&K034	Width at Seam	false	Half	1/4 in	4 3/4 in
Sleeve Opening Width- At Edge	S&K73	At edge	false	Half	1/4 in	3 3/4 in
Sleeve Cuff Height	S&K36	Cuff edge to seam	false	Full	1/8 in	3 1/4 in
Neck Trim Height	S&K020	Neck Seam to trim edge	false	Full	1/8 in	1 1/8 in
Front Logo Placement below CF Neckline	S&K21		false	Full	1/4 in	3 3/4 in
Front Logo Placement out from the CF Line	S&K022		false	Full	1/8 in	2 1/8 in
Side Rib Panel Width	S&K113	Width of rib panel	false	Full	1/4 in	3 in
Loop Label Placement at Sideseam	S&K023	Bottom edge to bottom of loop label, at the WL side seam	false	Full	1/8 in	7 in

Development Notes - Anastasiya Zolotova

CREATED ON MAY 7, 2024 12:23 AM

SS22CS013 Din Logo Crewneck




Date: 5/7/24

Status: Requesting 1st Proto

TD: Anastasiya

Fit: Follow measurement page, construction page, design sketch, and reference sample to create 1st proto.

FIT: THAM KHẢO TRANG THÔNG SỐ, TRANG CẤU TRÚC VÀ MẪU THAM KHẢO ĐỂ LÀM MẪU PROTO

COMPONENT		QTY	1.  NAVY BLAZER CODE: 19-3923 TCX
1	UA Loop Back Heavy Fleece CODE: C2300234 French Terry Placement: BODY Supplier: UNAVAILABLE Weight: 560gsm		-  Jet Black Custom Code: 19-0303 TCX Price: 0.00
2	IN DEV CODE: TBD Placement: CUFFS, HEM, DOUBLE AT SIDE PANELS SIDE BODY Notes: 2X2 RIB DOUBLED AT SIDE PANELS		- IN DEV Price: 0.00
3	HERRINGBONE TAPE CODE: TBD Placement: STRADDLED OVER BACK NECK SEAM F/ SH TO SH Supplier: Factory Sourced	1	-  Jet Black Custom Code: 19-0303 TCX SIZE: 3/8" Price: 0.00
4	ARTWORK CODE: EMBROIDERY Placement: WEARERS LEFT CHEST Notes: 4" DIN LOGO Supplier: Factory Sourced		- ARTWORK Price: 0.00
5	Isacord Thread CODE: ISACORD Notes: 4" DIN LOGO		Not used
LABEL + TRIM PACKAGE			
6	ALD Woven Main Label W/ Size CODE: ALD-ML03 Placement: INTERIOR CENTER BACK NECK, 3/4" BELOW SEAM, TACK FOUR CORNERS AT 45 DEGREE ANGLE Supplier: Colonial Country of Origin: CHINA	1 Piece	Not used
7	DIN Side Seam Label CODE: AI-DSSM-R1 Placement: WEARERS LEFT SIDE SEAM (FOLLOW POM) Supplier: Original Brand	1	Not used
8	ALD Hangtag CODE: ALD-T06P Placement: WEARER'S LEFT ARMHOLE ABOVE SIDE SEAM Supplier: Colonial Country of Origin: CHINA	1 Piece	Not used
9	ALD Branded Polybag - 15" X 18" (RECYCLED) CODE: ALD-PB02-R Supplier: Colonial Country of Origin: CHINA	1 Piece	Not used
10	ALD Woven Care + Content + COO Label CODE: ALD-COO-XXX Placement: INTERIOR WEARER'S LEFT SIDE SEAM, 5" ABOVE BODY HEM Supplier: Colonial Country of Origin: CHINA	1 Piece	Not used
11	UPC Sticker CODE: UPC Placement: POLY BAG; BACK SIDE, UPPER RIGHT HAND CORNER Supplier: Factory Sourced	1	Not used
Components 11			Total 0.00

SS22CS013				Measurements				
Sample Size: M								
POINT OF MEASURE		CODE			CRITICAL	TYPE	TOLERANCE	EXPECTED
Front Body Length	DÀI ÁO THÂN TRƯỚC	S&K01	HPS to bottom edge	TỪ ĐỈNH VAI ĐẾN MÉP LAI	true	Full	1/2 in	27 in
Back Body Length	DÀI ÁO THÂN SAU	S&K02	CB neck seam to bottom edge	GIỮA CỔ SAU ĐẾN MÉP LAI	true	Full	1/2 in	25 3/4 in
Front Neck Drop	HẠ CỔ TRƯỚC	S&K04	HPS to neck seam	ĐỈNH VAI ĐẾN ĐƯỜNG MAY	false	Full	1/8 in	3 3/4 in
Back Neck Drop	HẠ CỔ SAU	S&K05	HPS to neck seam	ĐỈNH VAI ĐẾN ĐƯỜNG MAY	false	Full	1/8 in	1 1/4 in
Back Neck Width	RỘNG CỔ SAU	S&K06	Seam to seam at back neck, at HPS point	TỪ ĐƯỜNG MAY ĐẾN ĐƯỜNG MAY TẠI CỔ SAU	false	Full	1/4 in	7 3/4 in
Shoulder Seam Forward	CHÒM VAI	S&K07	HPS to seam	TỪ ĐỈNH VAI ĐẾN ĐƯỜNG MAY CỔ	false	Full	1/8 in	1/2 in
Shoulder Slope	XUÔI VAI	S&K08	Shoulder point perpendicular to HPS	ĐO TỪ NGANG VAI ĐẾN ĐIỂM NGANG ĐẦU VAI	false	Full	1/4 in	1 3/4 in
Across Shoulder	NGANG VAI	S&K09	Seam to seam	ĐM ĐẾN ĐM	false	Half	3/8 in	18 1/4 in
Across Front	NGANG THÂN TRƯỚC	S&K010	7" dwn from HPS, Seam to seam	HẠ 7" TỪ CAO VAI, ĐO TỪ ĐƯỜNG MAY	false	Half	3/8 in	17 1/4 in
Across Back	NGANG THÂN SAU	S&K011	7" dwn from HPS, Seam to Seam	HẠ 7" TỪ CAO VAI, ĐO TỪ ĐƯỜNG MAY ĐẾN ĐƯỜNG MAY	false	Half	3/8 in	17 3/4 in
Chest Width	RỘNG NGỰC	S&K012	1" Below armhole- edge to edge	HẠ 1" DƯỚI NGÃ TƯ NÁCH, ĐO TỪ MÉP ĐẾN MÉP	true	Half	1/2 in	24 in
Bottom Opening Width- At Seam	NGANG LAI ÁO - TẠI ĐƯỜNG MAY	S&K108	Straight with seam relaxed	ĐO THẲNG THEO ĐƯỜNG MAY, ĐO ẸM	true	Half	1/2 in	19 1/2 in
Bottom Opening Width- At Edge	RỘNG LAI ÁO - TẠI MÉP	S&K013	At bottom edge	TẠI MÉP LAI	true	Half	1/2 in	17 in
Bottom Hem Height	TO BẦN LAI ÁO	S&K014	Bottom edge to stitch line or trim seam	CAO BƠ	false	Full	1/8 in	3 1/4 in

Sleeve Length from CB Neck	DÀI TAY TỪ GIỮA CỔ SAU	S&K032	3-point measure from CB Neck to shoulder point to sleeve edge	ĐO 3 ĐIỂM TỪ GIỮA CỔ SAU ĐẾN ĐIỂM VAI ĐẾN MÉP TAY	true	Full	1/2 in	35 in
Armhole Drop	HẠ NÁCH	S&K016	Below HPS - measure perpendicular	HẠ TỪ CAO VAI ĐẾN ĐIỂM NAGNG NGẮT TỰ NÁCH	false	Full	1/4 in	11 1/4 in
Bicep Width	RỘNG BẮP TAY	S&K017	1" below armhole- edge to edge	HẠ 1" DƯỚI NGẮT TỰ NÁCH, ĐO TỪ MÉP ĐẾN MÉP	false	Half	1/4 in	8 3/4 in
Forearm Width	RỘNG CẢNG TAY	S&K033	9" up from sleeve cuff edge	9" TỪ MÉP LẠI TAY	false	Half	1/4 in	6 3/4 in
Sleeve Opening Width- At Seam	RỘNG LẠI ÁO - TẠI ĐƯỜNG MAY	S&K034	Width at Seam	RỘNG TẠI ĐƯỜNG MAY	false	Half	1/4 in	4 3/4 in
Sleeve Opening Width- At Edge	RỘNG LẠI ÁO - TẠI MÉP	S&K73	At edge	TẠI MÉP LẠI	false	Half	1/4 in	3 3/4 in
Sleeve Cuff Height	TO BẮN LẠI TAY	S&K36	Cuff edge to seam	MÉP ĐẾN ĐƯỜNG MAY	false	Full	1/8 in	3 1/4 in
Neck Trim Height	TO BẮN BƠ CỔ	S&K020	Neck Seam to trim edge	MÉP ĐẾN ĐƯỜNG MAY CỔ	false	Full	1/8 in	1 1/8 in
Front Logo Placement below CF Neckline	ĐỊNH VỊ HÌNH THÊU NGƯỢC TRÁI DƯỚI VIỀN CỔ TRƯỚC	S&K21			false	Full	1/4 in	3 3/4 in
Front Logo Placement out from the CF Line	ĐỊNH VỊ HÌNH THÊU NGƯỢC TRÁI TỪ GIỮA TRƯỚC	S&K022			false	Full	1/8 in	2 1/8 in
Side Rib Panel Width	RỘNG PHỐI RIB	S&K113	Width of rib panel	RỘNG CỦA MIẾNG PHỐI RIB	false	Full	1/4 in	3 in
Loop Label Placement at Sideseam	VỊ TRÍ NHẮN SƯỜN CỜ SƯỜN NGOÀI	S&K023	Bottom edge to bottom of loop label, at the WL side seam	MÉP LẠI ĐẾN MÉP NHẮN, TẠI SƯỜN TRÁI NGOÀI NGƯỜI MẶC	false	Full	1/8 in	7 in