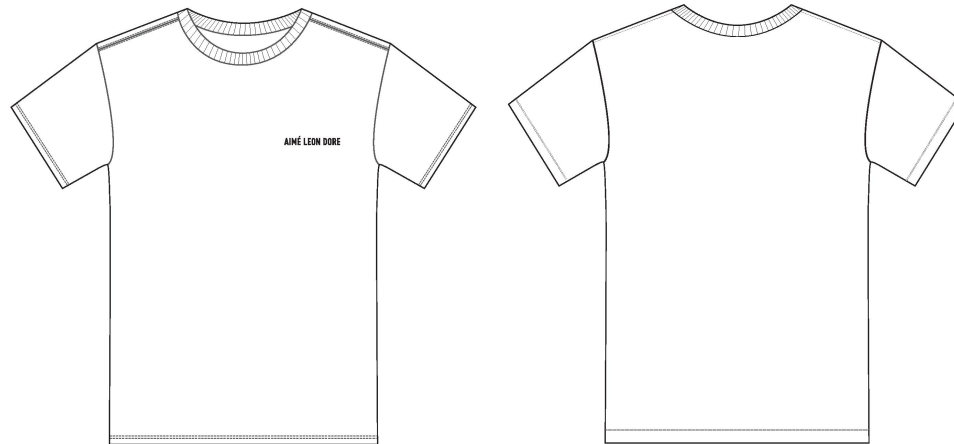


DIN Logo Tee - UA

Name	DIN Logo Tee - UA
Style No.	SS22CT016
Division	Mens
Category	Tees
Season	SS22
Year	2022
Size Scale	<div>M</div> -Sample size <div><div>XS</div><div>S</div><div>M</div><div>L</div><div>XL</div><div>XXL</div></div>
Style Status	Development
Factory	UN-AVAILABLE
Created by/Author	5/7/2024 Jeni Fitzgerald jeni.fitzgerald@aimeleondore.com



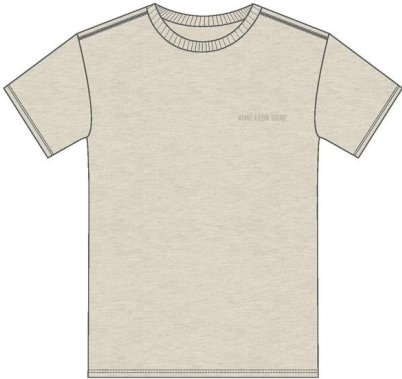
1\_B+W



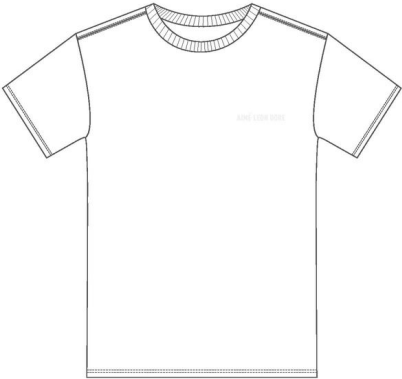
JET BLACK  
- 1x1 RIB: DTM



EVENING BLUE  
- 1x1 RIB: DTM



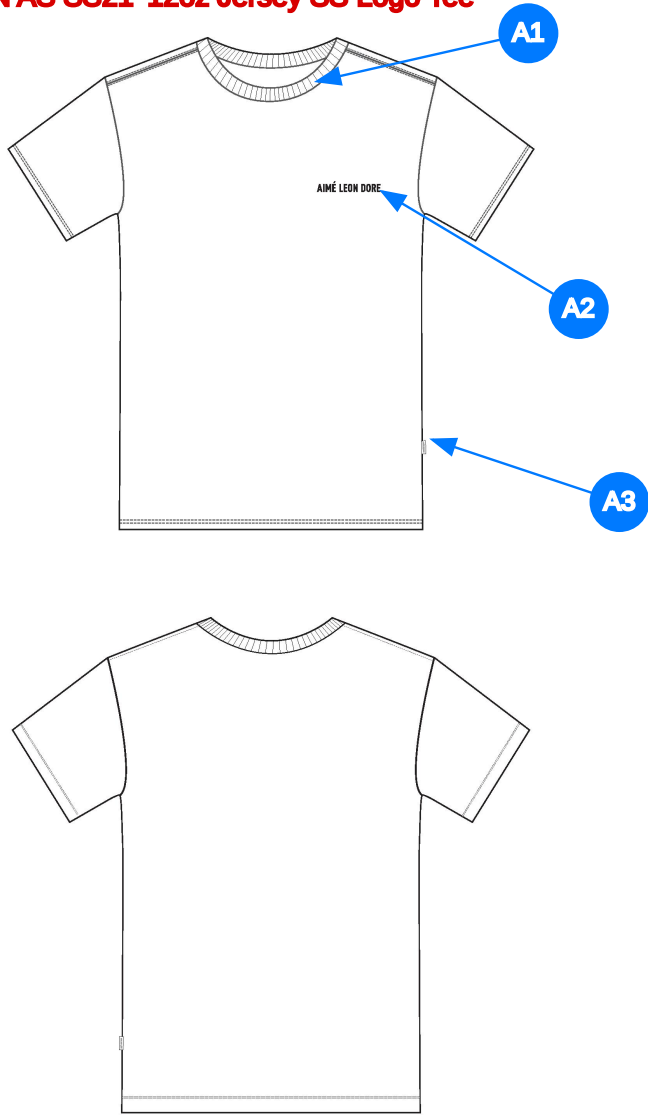
OATMEAL  
- 1x1 RIB: DTM



WHITE  
- 1x1 RIB: DTM

2\_CLRai

SAME CONSTRUCTION AS SS21 '12oz Jersey SS Logo Tee'



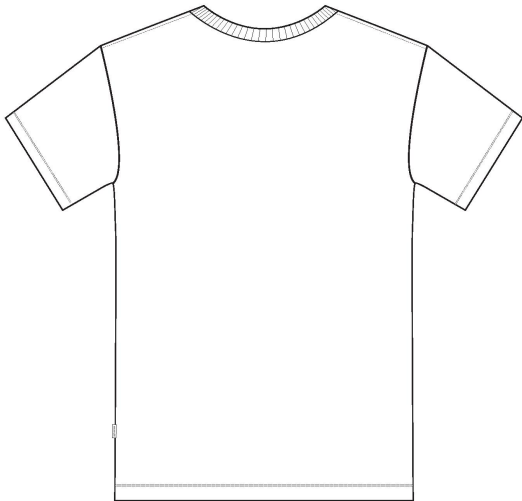
Comments (3)

- A1 SAME DOUBLED 1x1 RIB COLLAR AS "12oz Jersey SS Logo Tee"
- A2 EMBROIDERED ARTWORK - SEE FOLLOWING PAGES FOR DETAILS - SEE SEPARATE FILE FOR ACTUAL SIZE ARTWORK
- A3 ALD LOGO WOVEN LABEL AT SIDE SEAM

- 1. RIB 1X1 GẤP ĐÔI TẠI CỔ
- 2. THÊU TẠI NGỰC TRÁI - XEM FILE ARTWORK RIÊNG CHO KÍCH THƯỚC HÌNH THÊU
- 3. NHÃN CỜ SƯỜN NGOÀI

3\_Construction Details

**SAME STITCHING AS SS21 '12oz Jersey SS Logo Tee'**



4\_Stitching Details

ARTWORK STRIKE-OFF REQUEST  
- NEED TO SEE S/O ON ALL COLORWAYS  
- ARTWORK IS A DIRECT EMBROIDERY

\*ARTWORK NOT SHOWN TO ACTUAL SIZE\*



5\_ARTWORK DETAILS

Sample Size: M

POINT OF MEASURE	CODE	HOW TO MEASURE	CRITICAL	TYPE	TOLERANCE	M
Front Body Length	S&K01	HPS to bottom edge	true	Full	1/2 in	28 1/2 in
Back Body Length	S&K02	CB neck seam to bottom edge	true	Full	1/2 in	27 3/4 in
Front Neck Drop	S&K04	HPS to neck seam	false	Full	1/8 in	3 3/4 in
Back Neck Drop	S&K05	HPS to neck seam	false	Full	1/8 in	3/4 in
Back Neck Width	S&K06	Seam to seam at back neck, at HPS point	false	Full	1/4 in	7 1/2 in
Shoulder Seam Forward	S&K07	HPS to seam	false	Full	1/8 in	1/2 in
Shoulder Slope	S&K08	Shoulder point perpendicular to HPS	false	Full	1/4 in	2 in
Across Shoulder	S&K09	Seam to seam	false	Half	3/8 in	18 in
Across Front	S&K010	7" dwn from HPS, Seam to seam	false	Half	3/8 in	16 1/2 in
Across Back	S&K011	7" dwn from HPS, Seam to Seam	false	Half	3/8 in	16 3/4 in
Chest Width	S&K012	1" Below armhole- edge to edge	true	Half	1/2 in	21 in
Bottom Opening Width- At Edge	S&K013	At bottom edge	true	Half	1/2 in	21 in
Bottom Hem Height	S&K014	Bottom edge to stitch line or trim seam	false	Full	1/8 in	3/4 in
Short Sleeve Length	S&K015	Armhole seam to Sleeve edge	true	Full	1/4 in	9 1/2 in
Armhole Drop	S&K016	Below HPS - measure perpendicular	false	Full	1/4 in	11 1/4 in
Bicep Width	S&K017	1" below armhole- edge to edge	false	Half	1/4 in	8 in
Sleeve Opening Width- At Edge	S&K73	At edge	false	Half	1/4 in	7 1/4 in
Armhole Trim Height	S&K019	Edge to seam- trim width	false	Full	1/8 in	3/4 in
Neck Trim Height	S&K020	Neck Seam to trim edge	false	Full	1/8 in	1 in
Front Logo Placement below CF Neckline	S&K21		false	Full	1/4 in	4 in
Front Logo Placement out from the CF Line	S&K022		false	Full	1/8 in	1 5/8 in
Loop Label Placement at Sideseam	S&K023	Bottom edge to bottom of loop label, at the WL side seam	false	Full	1/8 in	7 in

Development Notes - Anastasiya Zolotova


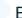
CREATED ON MAY 7, 2024 12:16 AM

SS22CT016 Din Logo tee  
Date: 5/7/24  
Status: Requesting 1st Proto  
TD: Anastasiya

Fit: Follow measurement page, construction page, design sketch, and reference sample to create 1st proto.

**FIT: THAM KHẢO THÔNG SỐ, TRANG CẤU TRÚC, SKETCH VÀ MẪU THAM KHẢO ĐỂ LÀM MẪU PROTO**



COMPONENT		QTY	1.  BRIGHT WHITE CODE: 11-0601 TCX
1	<b>TT-SJ30SX2-W120</b> CODE: UA CORE JERSEY Placement: BODY / BACK NECK F/ AH TO AH Supplier: UNAVAILABLE Weight: 245 GSM		-  Bright White Custom Code: 11-0601 TCX  Price: 0.00
2	<b>TT-RIB20SX2</b> CODE: UA CORE 1x1 RIB Placement: COLLAR Supplier: UNAVAILABLE		-  Bright White Custom Code: 11-0601 TCX  Price: 0.00
3	<b>ARTWORK</b> CODE: EMBROIDERY Placement: WEARERS LEFT CHEST Notes: 3" DIN LOGO (FOLLOW ARTWORK MATCHING ISACORD THREAD, PLS ADVISE IF THERE IS A DIFFERENT EMBROIDERY BOOK WE SHOULD REFERENCE HERE) Supplier: Factory Sourced	1	- ARTWORK  Price: 0.00
LABEL + TRIM PACKAGE			
4	<b>ALD Woven Main Label W/ Size</b> CODE: ALD-ML03 Placement: INTERIOR CENTER BACK NECK, 3/4" BELOW SEAM, TACK FOUR CORNERS AT 45 DEGREE ANGLE Supplier: Colonial Country of Origin: CHINA	1 Piece	- ALD Woven Main Label W/ Size  Price: 0.079
5	<b>DIN Side Seam Label</b> CODE: AI-DSSM-R1 Placement: WEARERS LEFT SIDE SEAM (FOLLOW POM) Supplier: Original Brand	1	Not used
6	<b>ALD Hangtag</b> CODE: ALD-T06P Placement: WEARER'S LEFT ARMHOLE ABOVE SIDE SEAM Supplier: Colonial Country of Origin: CHINA	1 Piece	- ALD Hangtag  Price: 0.22
7	<b>ALD Branded Polybag - 12" X 15" (RECYLCED)</b> CODE: ALD-PB01-R Supplier: Colonial Country of Origin: CHINA	1 Piece	- ALD Branded Polybag - 12" x 15" (RECYLCED)  Price: 0.21
8	<b>ALD Woven Care + Content + COO Label</b> CODE: ALD-COO-XXX Placement: INTERIOR WEARER'S LEFT SIDE SEAM, 5" ABOVE BODY HEM Supplier: Colonial Country of Origin: CHINA	1 Piece	- ALD Woven Care + Content + COO Label  Price: 0.058
9	<b>UPC Sticker</b> CODE: UPC Placement: POLY BAG; BACK SIDE, UPPER RIGHT HAND CORNER Supplier: Factory Sourced	1	- UPC Sticker  Price: 0.00
Components 9			Total 0.567

SS22CT016			Size Specifications - Graded Measurements					
Sample Size: M								
POINT OF MEASURE		CODE	HOW TO MEASURE		CRITICAL	TYPE	TOLERANCE	M
Front Body Length	DÀI ÁO THÂN TRƯỚC	S&K01	HPS to bottom edge	DÀI ÁO THÂN TRƯỚC TỪ ĐỈNH VAI ĐẾN MÉP LẠI	true	Full	1/2 in	28 1/2 in
Back Body Length	DÀI ÁO THÂN SAU	S&K02	CB neck seam to bottom edge	DÀI ÁO THÂN SAU GIỮA CỔ SAU ĐẾN MÉP LẠI	true	Full	1/2 in	27 3/4 in
Front Neck Drop	HẠ CỔ TRƯỚC	S&K04	HPS to neck seam	HẠ CỔ TRƯỚC TỪ ĐỈNH VAI ĐẾN ĐƯỜNG MAY CỔ	false	Full	1/8 in	3 3/4 in
Back Neck Drop	HẠ CỔ SAU	S&K05	HPS to neck seam	HẠ CỔ SAU TỪ ĐỈNH VAI ĐẾN ĐƯỜNG MAY CỔ	false	Full	1/8 in	3/4 in
Back Neck Width	RỘNG CỔ SAU	S&K06	Seam to seam at back neck, at HPS point	RỘNG CỔ SAU TỪ ĐƯỜNG MAY TỚI ĐƯỜNG MAY, ĐO TẠI ĐỈNH VAI.	false	Full	1/4 in	7 1/2 in
Shoulder Seam Forward	CHÒM VAI	S&K07	HPS to seam	ĐỈNH VAI ĐẾN ĐƯỜNG MAY	false	Full	1/8 in	1/2 in
Shoulder Slope	XUÔI VAI	S&K08	Shoulder point perpendicular to HPS	XUÔI VAI ĐO TỪ NGANG VAI ĐẾN ĐIỂM NGANG ĐỈNH VAI	false	Full	1/4 in	2 in
Across Shoulder	NGANG VAI	S&K09	Seam to seam	ĐM ĐẾN ĐM	false	Half	3/8 in	18 in
Across Front	NGANG NGỰC	S&K010	7" dwn from HPS, Seam to seam	NGANG TRƯỚC : ĐO TỪ HẠ 7" TỪ CAO VAI, ĐO TỪ ĐƯỜNG MAY ĐẾN ĐƯỜNG MAY	false	Half	3/8 in	16 1/2 in
Across Back	NGANG LƯNG	S&K011	7" dwn from HPS, Seam to Seam	NGANG SAU ĐO TỪ HẠ 7" TỪ CAO VAI, ĐO TỪ ĐƯỜNG MAY ĐẾN ĐƯỜNG MAY	false	Half	3/8 in	16 3/4 in
Chest Width	RỘNG NGỰC	S&K012	1" Below armhole- edge to edge	RỘNG NGỰC ĐO TỪ: HẠ 1" DƯỚI NGÃ TƯ NÁCH, ĐO TỪ MÉP ĐẾN MÉP	true	Half	1/2 in	21 in
Bottom Opening Width- At Edge	RỘNG LẠI ÁO TẠI MÉP	S&K013	At bottom edge	NGANG LẠI TẠI MÉP LẠI	true	Half	1/2 in	21 in
Bottom Hem Height	TO BẦN LẠI ÁO	S&K014	Bottom edge to stitch line or trim seam	TO BẦN LẠI TỪ MÉP ĐẾN ĐƯỜNG ĐIỀU	false	Full	1/8 in	3/4 in
Short Sleeve Length	DÀI TAY TRONG	S&K015	Armhole seam to Sleeve edge	ĐƯỜNG MAY NÁCH ĐẾN MÉP LẠI TAY	true	Full	1/4 in	9 1/2 in
Armhole Drop	HẠ NÁCH	S&K016	Below HPS - measure perpendicular	HẠ NÁCH: HẠ TỪ ĐỈNH VAI ĐẾN ĐIỂM NGANG NGÃ TƯ NÁCH	false	Full	1/4 in	11 1/4 in

Bicep Width	RỘNG BẮP TAY	S&K017	1" below armhole- edge to edge	BẮP TAY :HẠ 1" DƯỚI NGÃ TƯ NÁCH, ĐO TỪ MÉP ĐẾN MÉP	false	Half	1/4 in	8 in
Sleeve Opening Width- At Edge	RỘNG LẠI TAY - TẠI MÉP	S&K73	At edge	TẠI MÉP	false	Half	1/4 in	7 1/4 in
Armhole Trim Height	CAO NÁCH	S&K019	Edge to seam- trim width	MÉP ĐẾN ĐƯỜNG MAY	false	Full	1/8 in	3/4 in
Neck Trim Height	TO BÀN BƠ CỔ	S&K020	Neck Seam to trim edge	ĐƯỜNG MAY CỔ ĐẾN MÉP	false	Full	1/8 in	1 in
Front Logo Placement below CF Neckline	ĐỊNH VỊ HÌNH THÊU NGỰC TRÁI DƯỚI VIỀN CỔ TRƯỚC	S&K21			false	Full	1/4 in	4 in
Front Logo Placement out from the CF Line	ĐỊNH VỊ HÌNH IN NGỰC TRÁI TỪ GIỮA TRƯỚC	S&K022			false	Full	1/8 in	1 5/8 in
Loop Label Placement at Sideseam	VỊ TRÍ NHÃN CỜ TẠI ĐƯỜNG MAY SƯỜN	S&K023	Bottom edge to bottom of loop label, at the WL side seam	NHÃN SƯỜN: MAY SƯỜN TRÁI NGƯỜI MẶC - TỪ MÉP LẠI ĐẾN CẠNH DƯỚI NHÃN SƯỜN	false	Full	1/8 in	7 in