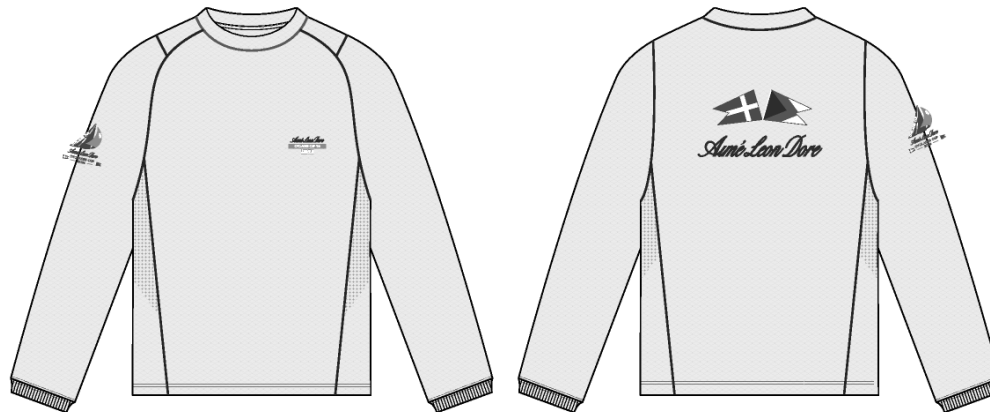
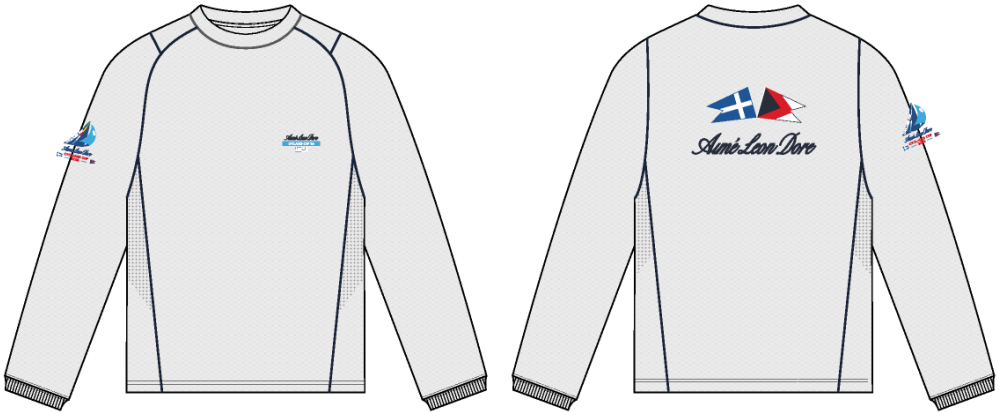


LS Racing Tee

Name	LS Racing Tee
Style No.	SS26CT113
Division	Mens
Category	Tees
Season	Spring/Summer
Year	2026
Size Scale	<div>M</div> -Sample size <div><div>XS</div><div>S</div><div>M</div><div>L</div><div>XL</div><div>XXL</div></div>
Style Status	Adopted
Factory	UN-AVAILABLE
Created by/Author	11/12/2025 Jeni Fitzgerald jeni.fitzgerald@aimeleondore.com



1\_B+W-1

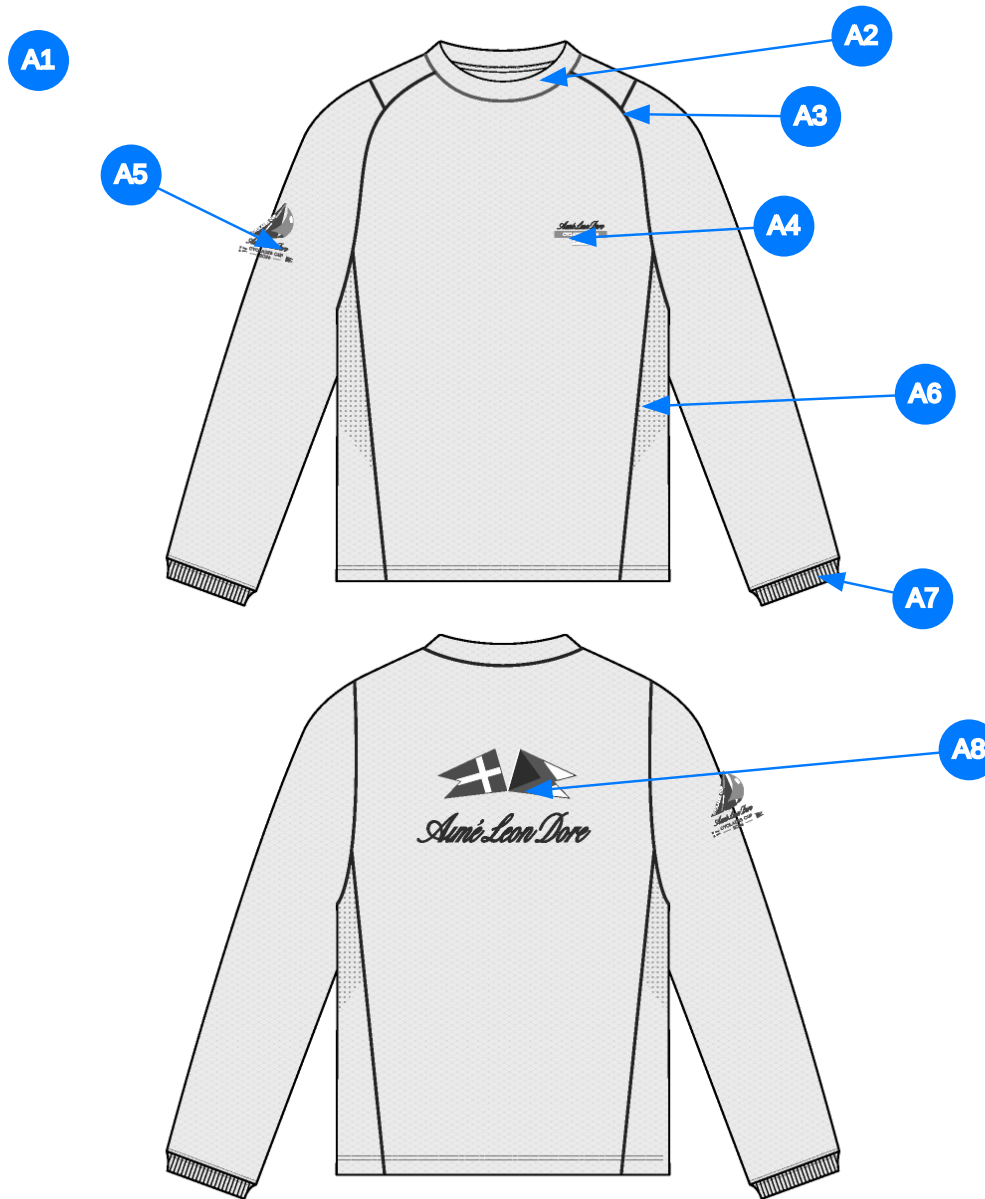


WISPY CLOUDS: 11-3900 TCX



MARITIME BLUE: 19-3831 TCX

2\_CLR-1

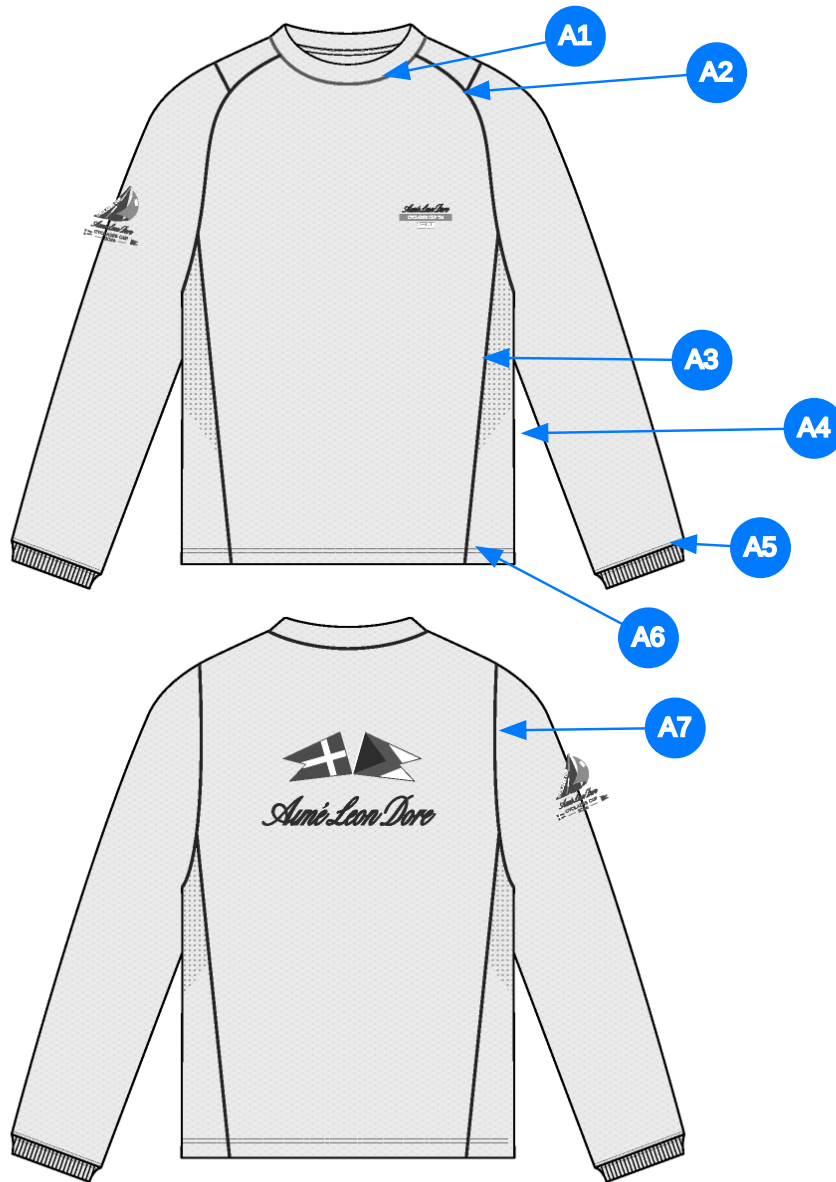


Comments (8)

- A1** FIT: LS Sonny Practice Tee FW24CT039
- A2** SELF FABRIC DOUBLED @ NECK TRIM
- A3** HALF RAGLAN/HALF SET IN CONSTRUCTION
- A4** PRINTED ARTWORK @ WL CHEST - SEE SEPARATE FILES FOR ARTWORK
- A5** PRINTED ARTWORK @ WR SLEEVE - SEE SEPARATE FILES FOR ARTWORK
- A6** SIDE PANEL - LASER PERFERATION
- A7** 1x1 POLY RIBBED CUFF @ SLEEVE
- A8** PRINTED ARTWORK @ CB - SEE SEPARATE FILES FOR ARTWORK

1. fit: tham khảo FW24CT039
2. vải chính 2 lớp tại cổ
3. cấu trúc raglan như sketch
4. hình in tại ngực trái
5. hình in tại tay phải
6. laser cut tại phối sườn
7. rib 1x1 tại lai tay
8. hình in tại thân sau

3\_CONSTRUCTION DETAILS-1



Comments (7)

- A1** FLATLOCK STITCH @ NECK
- A2** FLATLOCK STITCHING @ ARMHOLE
- A3** FLATLOCK STITCHING @ SIDE PANEL
- A4** NO SIDE SEEM
- A5** 1/4" DN TS @ SLEEVE CUFFS
- A6** 1/4" DN TS @ BOTTOM HEM
- A7** FLATLOCK STITCHING @ BACK ARMHOLE

1. đánh bông tại cổ
2. đánh bông tại nách
3. đánh bông tại phối sườn
4. không có đường may sườn
5. điều 2 kim 1/4" tại lai tay
6. điều 2 kim tại lai áo
7. đánh bông tại nách sau

3\_STITCHING DETAILS-1

Sample Size: M

POINT OF MEASURE	CODE	HOW TO MEASURE	CRITICAL	TYPE	TOLERANCE	M
Front Body Length	S&K01	HPS to bottom edge	true	Full	1/2 in	27 in
Back Body Length	S&K02	CB neck seam to bottom edge	true	Full	1/2 in	26 1/4 in
Shoulder Slope	S&K037	Measured at Back Shoulder Seam	false	Full	1/8 in	1 3/4 in
Front Neck Drop	S&K04	HPS to neck seam	false	Full	1/8 in	3 in
Back Neck Drop	S&K05	HPS to neck seam	false	Full	1/8 in	3/4 in
Back Neck Width	S&K06	Seam to seam at back neck, at HPS point	false	Full	1/4 in	7 1/2 in
Front Raglan Seam Placement at Neck	S&K038	From HPS Straight Down to Center of Flatlock Stitch	false	Full	1/8 in	2 in
Minimum Neck Stretch	S&K199		true	Half	0 in	11 1/2 in
Neck Trim Height	S&K020	Center of Flatlock to Top Edge of Neck Trim	false	Full	1/8 in	1 1/4 in
Across Front/Across Back Position from HPS	eos7YR		true	Full	0 in	7 in
Across Front	S&K010	Straight Down from HPS, To Flatlock Stitching Center	false	Half	3/8 in	12 3/4 in
Across Back	S&K011	Straight Down from HPS, To Flatlock Stitching Center	false	Half	3/8 in	13 7/8 in
Chest Width	S&K012	1" Below armhole- edge to edge	true	Half	1/4 in	21 in
Bottom Opening Width- At Edge	S&K013	At bottom edge	true	Half	1/4 in	21 in
Bottom Hem Height	S&K014	Bottom edge to stitch line or trim seam	false	Full	1/8 in	3/4 in
Armhole Drop	S&K016	Below HPS - measure perpendicular	false	Full	1/4 in	11 3/8 in
Bicep Width	S&K017	1" below armhole- edge to edge	false	Half	1/4 in	8 in
Forearm Width	S&K033	9" up from sleeve cuff edge	false	Half	1/4 in	6 1/4 in
Sleeve Opening Width- At Seam	S&K034	Width at Seam	false	Half	1/4 in	4 3/8 in
Sleeve Opening Width- At Edge	S&K73	At edge	false	Half	1/4 in	3 7/8 in
Cuff Height	S&K036	Cuff edge to seam	false	Full	1/8 in	1 1/2 in
Sleeve Length from CB Neck	S&K032	3-point measure from CB Neck to shoulder point to sleeve edge	true	Full	1/2 in	34 in
Collar Height at CB	S&K025	Neck seam to collar edge at CB	false	Full	1/8 in	1 1/8 in
WL Chest Artwork Placement from HPS to Top Edge	S&K103		true	Full	1/8 in	7 1/4 in
WL Chest Artwork Placement Out from CF Line	S&K252		false	Full	1/8 in	2 in
CB Artwork Placement below CB Neck Seam	S&K109	From CB Neck Seam to Top Edge of Artwork	false	Full	1/8 in	4 in
WR Sleeve Artwork from Seam	8864yF		false	Full	1/8 in	6 in
WR Sleeve Artwork Centered on Sleeve	eVUjJS		false	Full	1/8 in	0 in

## Development Notes - Sarah Tota

CREATED ON NOV 7, 2025 8:24 PM

### **SS26CT113 LS Racing Tee**

Date: 11/7/24

Status: Requesting 1st proto

TD: Sarah

Fit: Follow reference fit of below with the following changes

- Increasing chest, bottom opening, upper sleeve, armhole drop, bicep and forearm
- Adding side panels
- Adding rib cuff

\*Sending reference sample

fit: tham khảo mẫu khách gửi với thay đổi bên dưới:

- tăng ngực, lai áo, tay áo trên, hạ nách, bắp tay và khuỷu tay
- thêm phối sườn
- thêm rib tay





Screen Shot 2025-11-12 at 4.53.34 PM.jpg



COMPONENT		QTY	1.  PROTO
FABRIC			
1	<b>HMSY2906 INTERLOCK</b> CODE: HMSY2906 Placement: BODY, SLEEVES, DOUBLED AT NECK TRIM Supplier: UNAVAILABLE Weight: 200 GSM Country of Origin: VIETNAM		-  Undefined Price: 0.00
2	<b>HMSY2906 INTERLOCK</b> CODE: HMSY2906 Placement: SIDE PANELS Notes: FOLLOW ARTWORK FILE FOR LASER PERFORATION Supplier: UNAVAILABLE Weight: 200 GSM Country of Origin: VIETNAM		-  Undefined Price: 0.00
3	<b>IN DEV</b> CODE: TBD Placement: SLEEVE CUFF TRIM Notes: 1X1 RIB TO MATCH BODY FABRIC, PLS ADVISE ARTICLE #		- IN DEV Price: 0.00
4	<b>2-24162A001-S0016</b> CODE: UA Poly Neck Tape Placement: @ BACK NECK Supplier: UNAVAILABLE		-  Undefined Price: 0.00
5	<b>ARTWORK</b> CODE: AS CORRESPONDING FILE Placement: WL CHEST Notes: FOLLOW ARTWORK FILE AND POM Supplier: Factory Sourced		- ARTWORK Price: 0.00
6	<b>ARTWORK</b> CODE: AS CORRESPONDING FILE Placement: CB BODY Notes: FOLLOW ARTWORK FILE AND POM Supplier: Factory Sourced		- ARTWORK Price: 0.00
7	<b>ARTWORK</b> CODE: AS CORRESPONDING FILE Placement: WR SLEEVE Notes: FOLLOW ARTWORK FILE AND POM Supplier: Factory Sourced		- ARTWORK Price: 0.00
8	<b>ARTWORK</b> CODE: AS CORRESPONDING FILE Placement: SIDE PANELS Notes: LASER PERFORATION, FOLLOW ARTWORK FILE AND POM Supplier: Factory Sourced		- ARTWORK Price: 0.00
LABEL AND TRIM PACKAGE			
9	<b>ALD Woven Main Label W/ Size</b> CODE: ALD-ML03 Placement: INTERIOR CENTER BACK NECK Supplier: Colonial Country of Origin: CHINA	1 Piece	- ALD Woven Main Label W/ Size Price: 0.079
10	<b>ALD Hangtag</b> CODE: ALD-T06P Placement: WEARER'S LEFT ARMHOLE ABOVE SIDE SEAM Supplier: Colonial Country of Origin: CHINA	1 Piece	- ALD Hangtag Price: 0.22
11	<b>ALD Branded Poly Bag - 12" X 15" (RECYLCED)</b> CODE: ALD-PB01-R Supplier: Colonial Country of Origin: CHINA	1 Piece	- ALD Branded Poly bag - 12" x 15" (RECYLCED) Price: 0.21
12	<b>ALD Woven Care + Content + COO Label</b> CODE: ALD-COO-XXX Placement: INTERIOR WEARER'S LEFT SIDE SEAM, 5" ABOVE BODY HEM Supplier: Colonial Country of Origin: CHINA	1 Piece	- ALD Woven Care + Content + COO Label Price: 0.058
13	<b>UPC Sticker</b> CODE: UPC Placement: POLY BAG; BACK SIDE, UPPER RIGHT HAND CORNER Supplier: Factory Sourced	1	- UPC Sticker Price: 0.00

COMPONENT

QTY

1. PROTO

Components 13

Total 0.567